

Supplementary Data

The synthesis, characterisation and cytotoxicity of bisintercalating (2,2':6',2''-terpyridine)platinum(II) complexes

Benjamin. W. J. Harper^{ab} and Janice R. Aldrich-Wright^{ab*}

a) Nanoscale Organisation and Dynamics Group

School of Science and Health

University of Western Sydney

Locked Bag 1797

Penrith South DC, 2751, NSW

Australia

b) School of Medicine,

University of Western Sydney

Locked Bag 1797,

Penrith South DC, 2751, NSW,

Australia

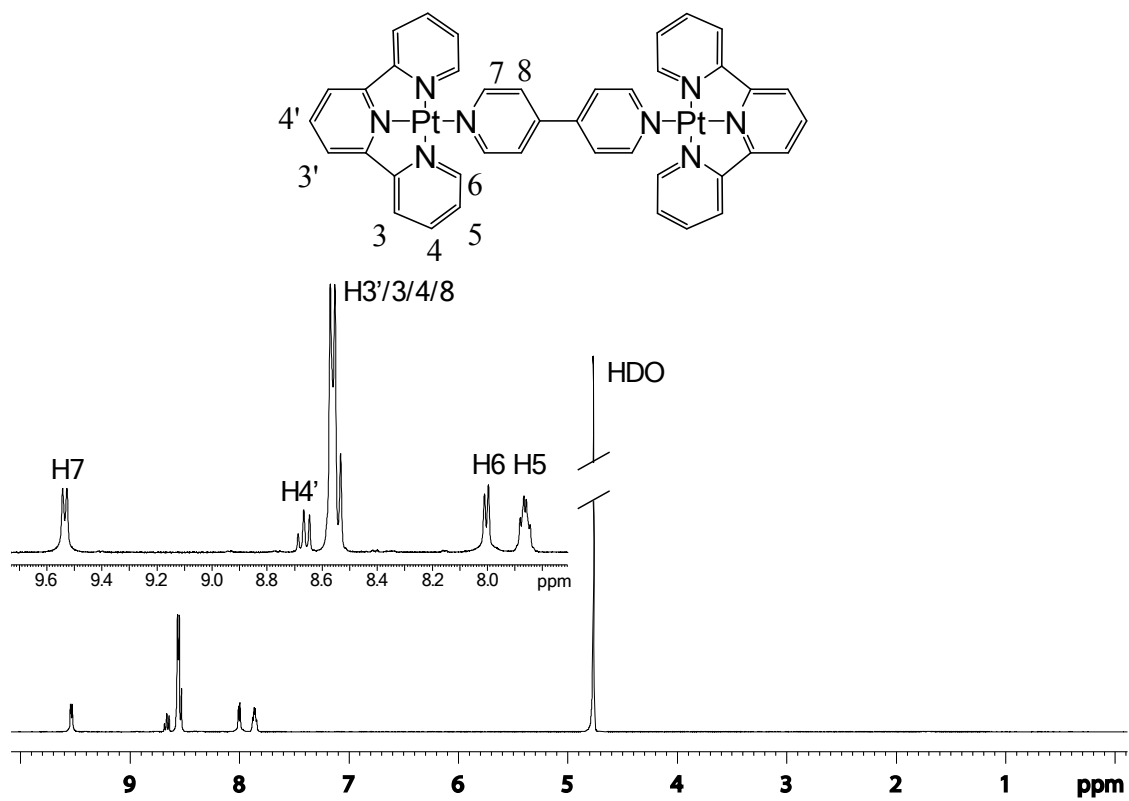


Figure S-50: The chemical structure, numbering and ^1H spectrum of **1** in $d_2\text{-D}_2\text{O}$. Inset: The expansion of the aromatic region between 7.8 and 9.6 ppm.

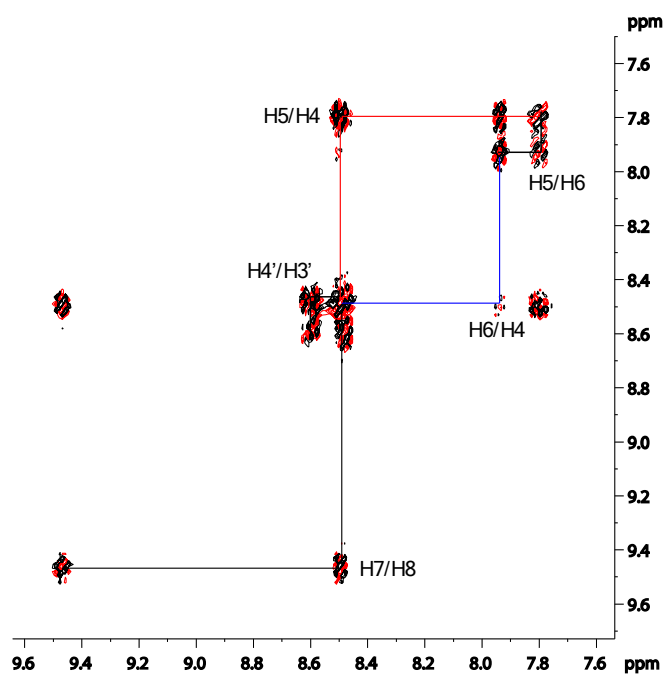


Figure S-51: The COSY spectrum of **1** in d_2 -D₂O with lines of connectivity highlighting cross correlations.

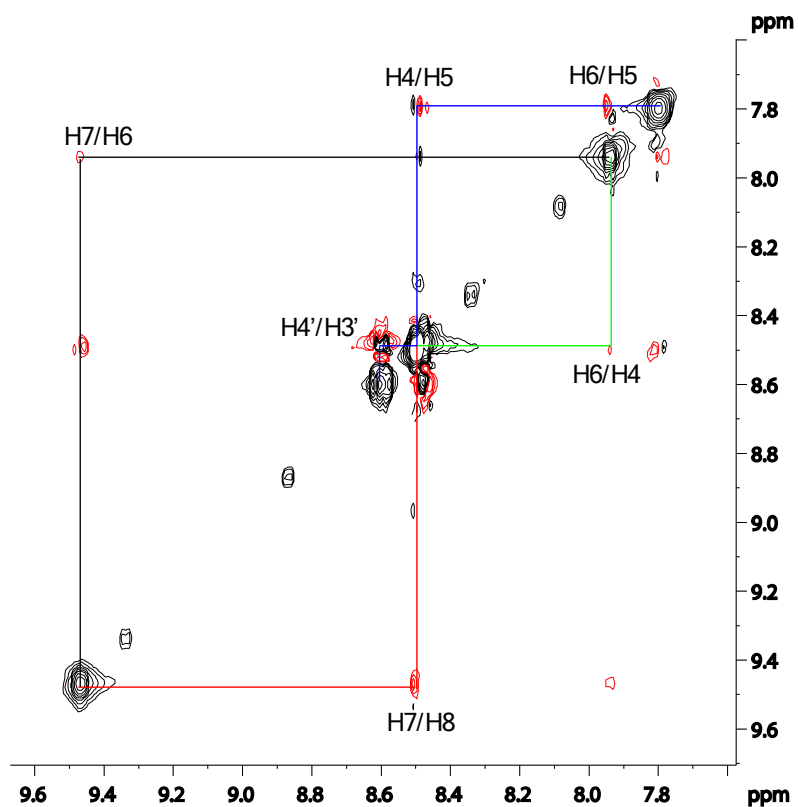


Figure S-52: The NOESY spectrum of **1** in d_2 -D₂O with lines of connectivity highlighting cross correlations.

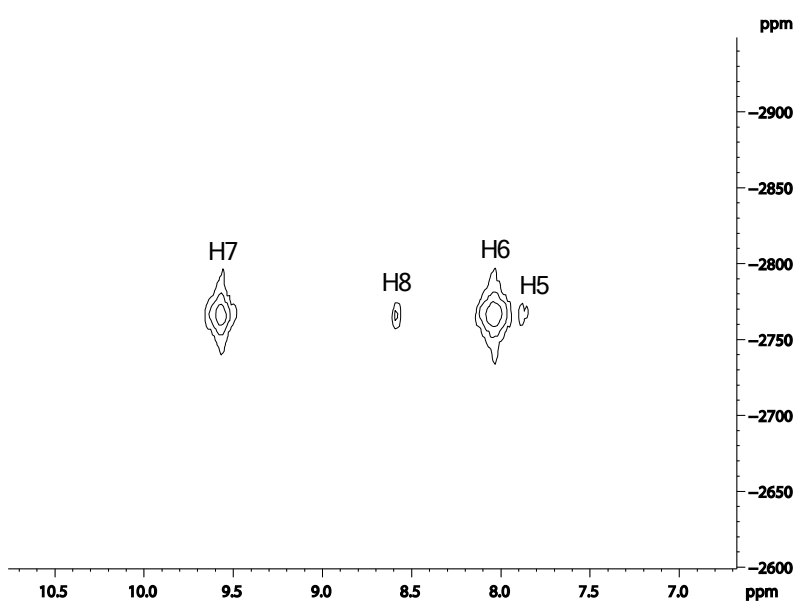


Figure S-53: The ¹H-¹⁹⁵Pt HMQC spectrum of **1** in d_2 -D₂O.

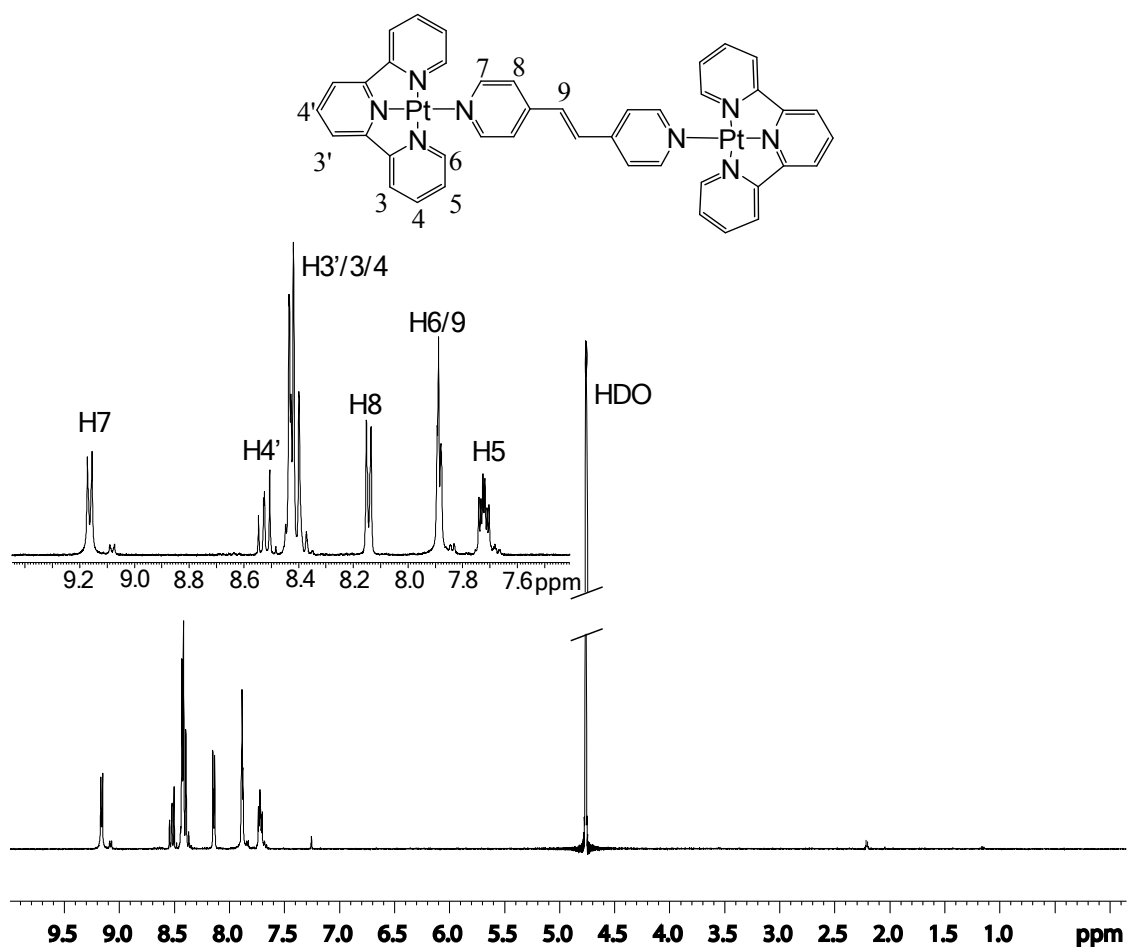


Figure S-54: The chemical structure, numbering and ^1H spectrum of **2** in $d_2\text{-D}_2\text{O}$. Inset: The expansion of the aromatic region between 7.6 and 9.2 ppm.

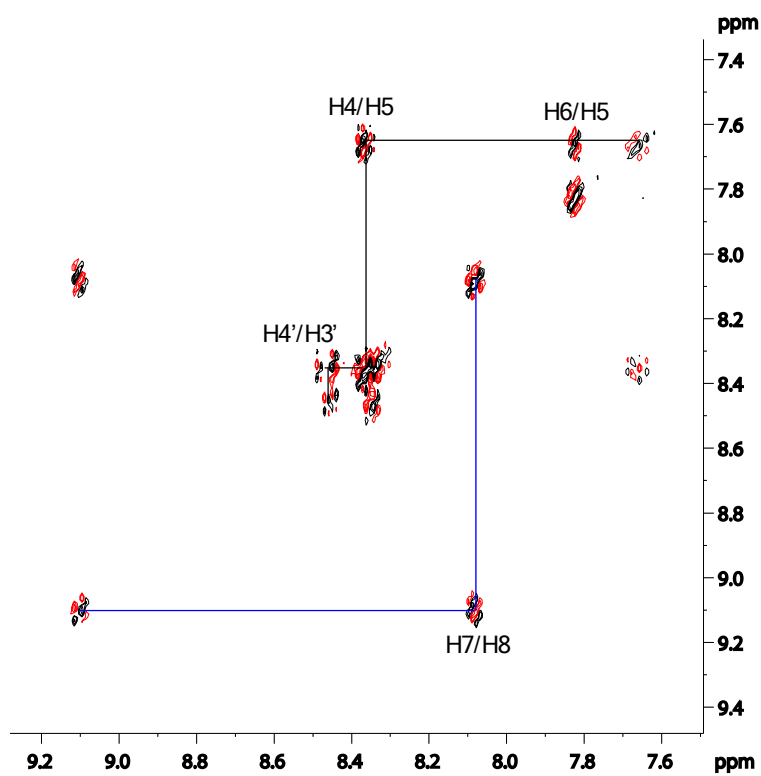


Figure S-55: The COSY spectrum of **2** in d_2 -D₂O with lines of connectivity highlighting cross correlations.

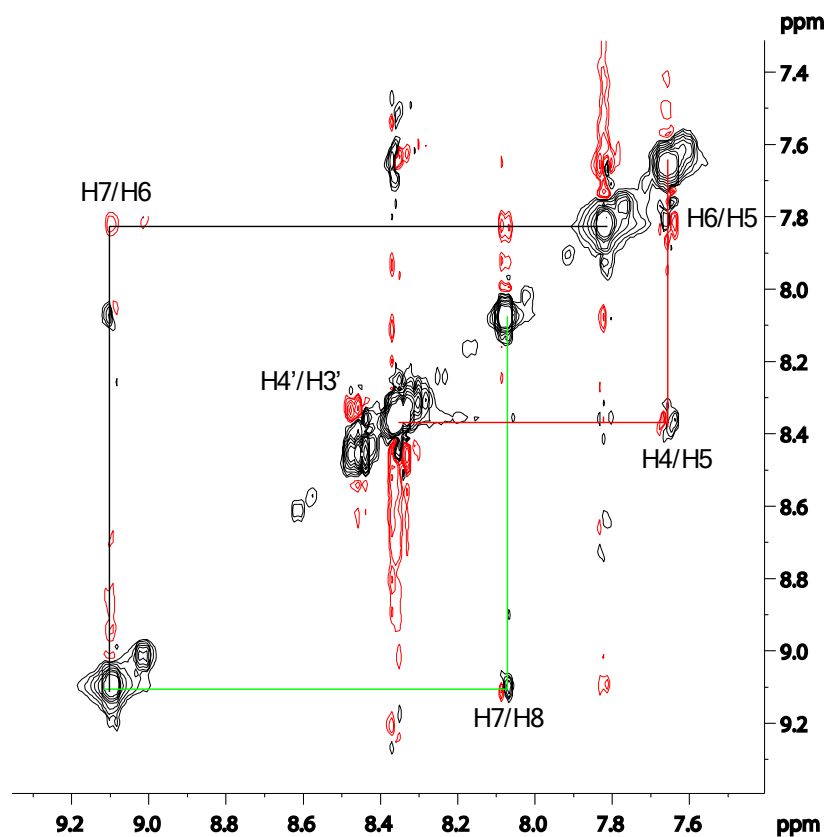


Figure S-56: The NOESY spectrum of **2** in d_2 -D₂O with lines of connectivity highlighting cross correlations.

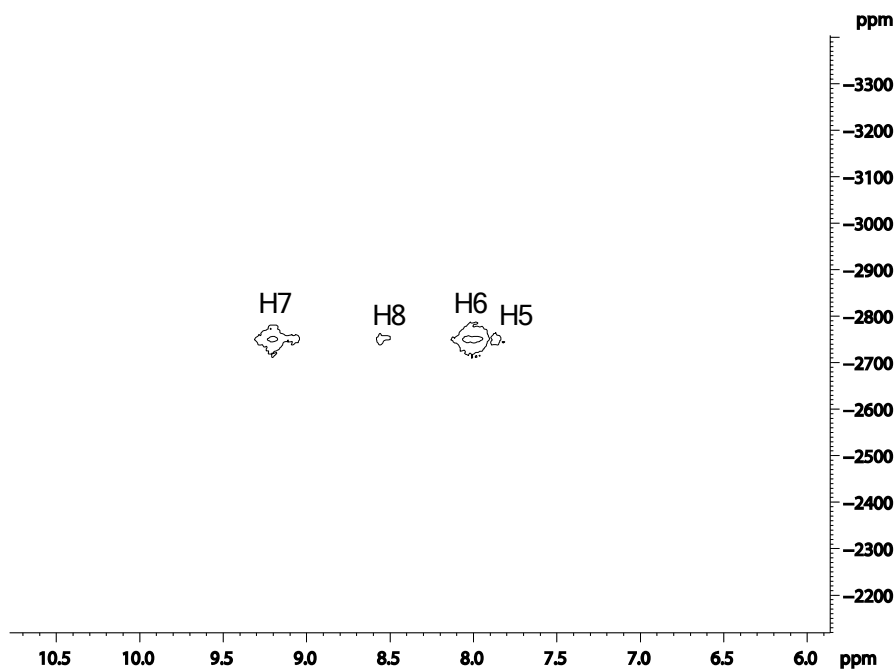


Figure S-57: The ^1H - ^{195}Pt HMQC spectrum of **2** in d_2 -D₂O.

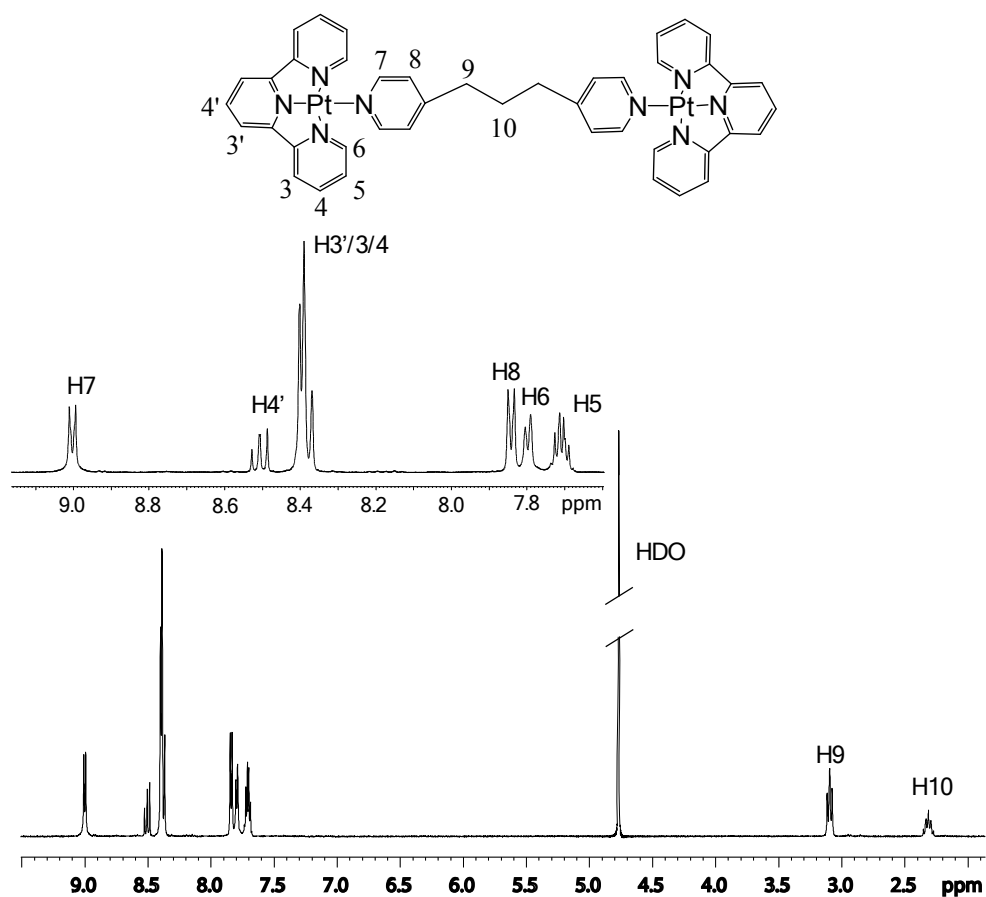


Figure S-58: The chemical structure, numbering and ^1H spectrum of **3** in $d_2\text{-D}_2\text{O}$. Inset: The expansion of the aromatic region between 7.7 and 9.0 ppm.

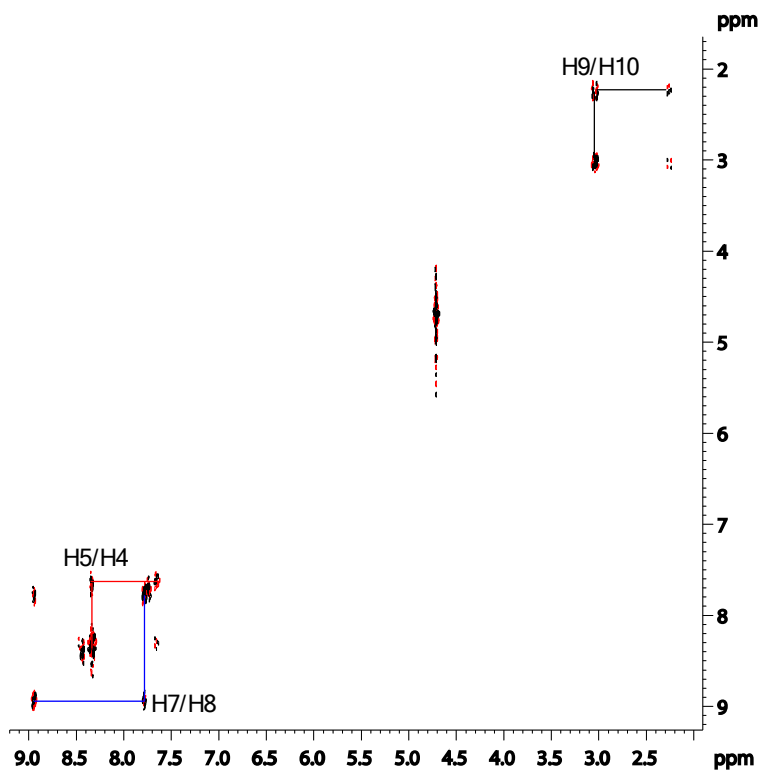


Figure S-59: The COSY spectrum of $[\{\text{Pt}(\text{terpy})\}_2(\text{TMED})](\text{OTf})_4$ in $d_2\text{-D}_2\text{O}$ with lines of connectivity highlighting cross correlations.

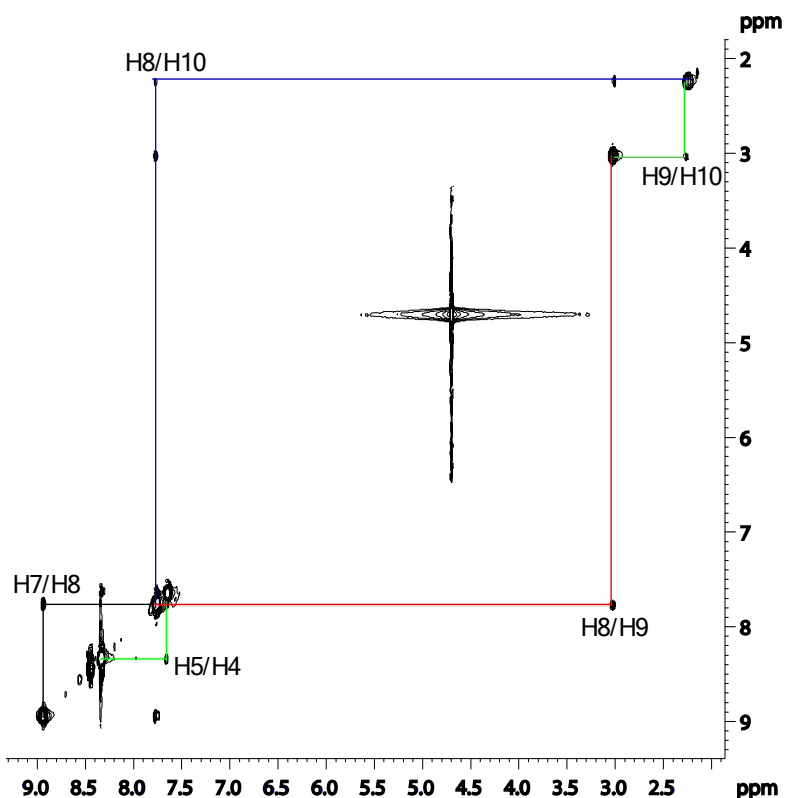


Figure S-11: The NOESY spectrum of **3** in $d_2\text{-D}_2\text{O}$ with lines of connectivity highlighting cross correlations.

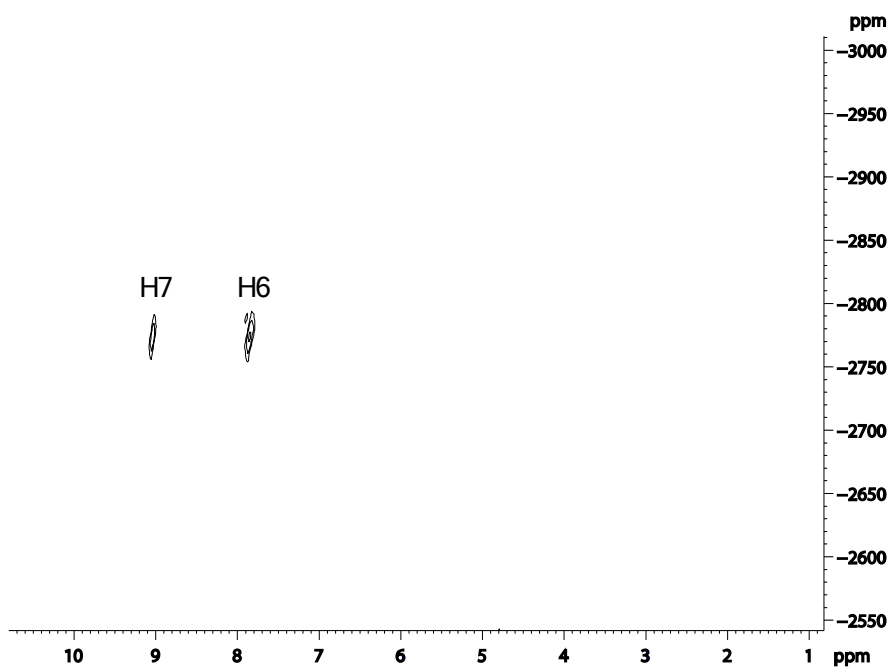


Figure S-12: The $^1\text{H}\text{-}^{195}\text{Pt}$ HMQC spectrum of **3** in $d_2\text{-D}_2\text{O}$.

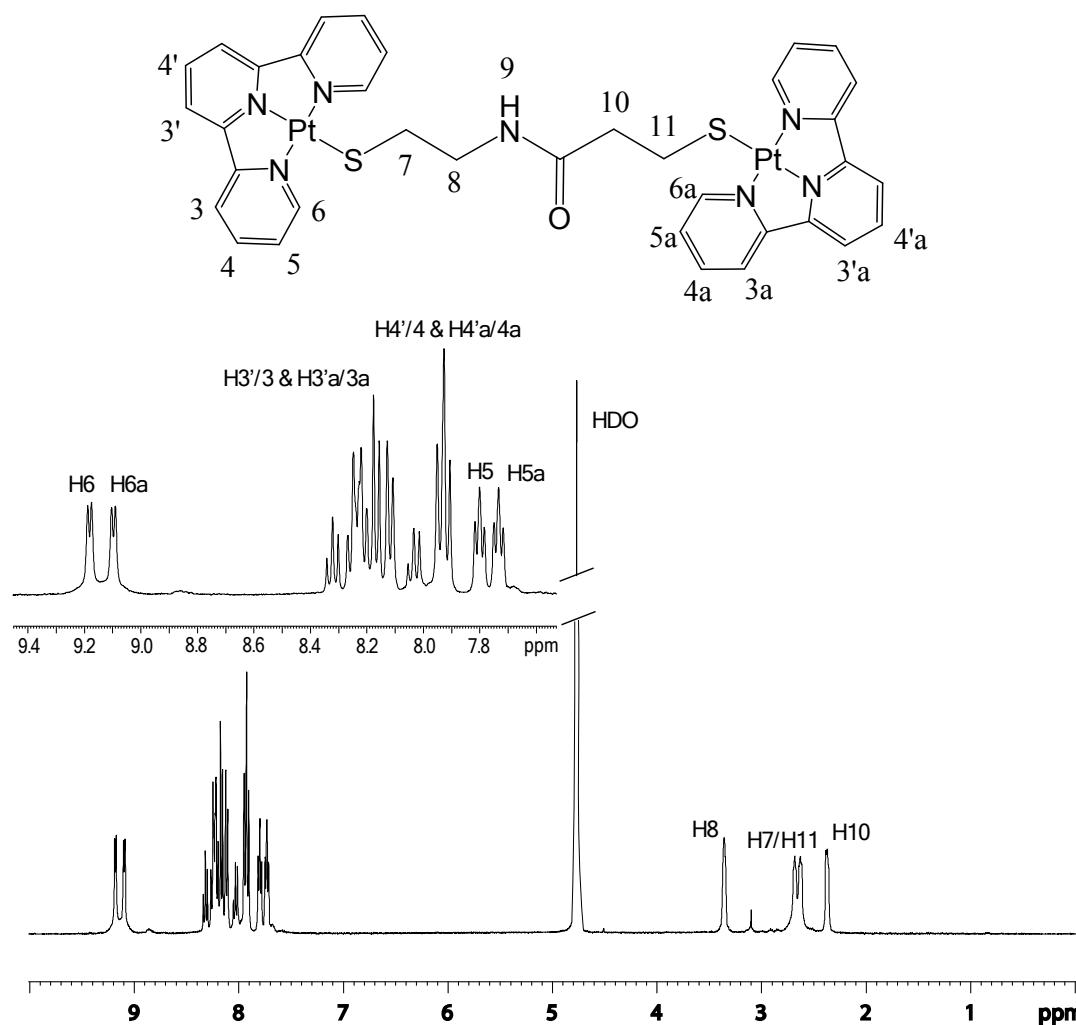


Figure S-1: The chemical structure, numbering ^1H spectrum of **4** in $d_2\text{-D}_2\text{O}$. Inset: The expansion of the aromatic region between 7.6 and 9.4 ppm.

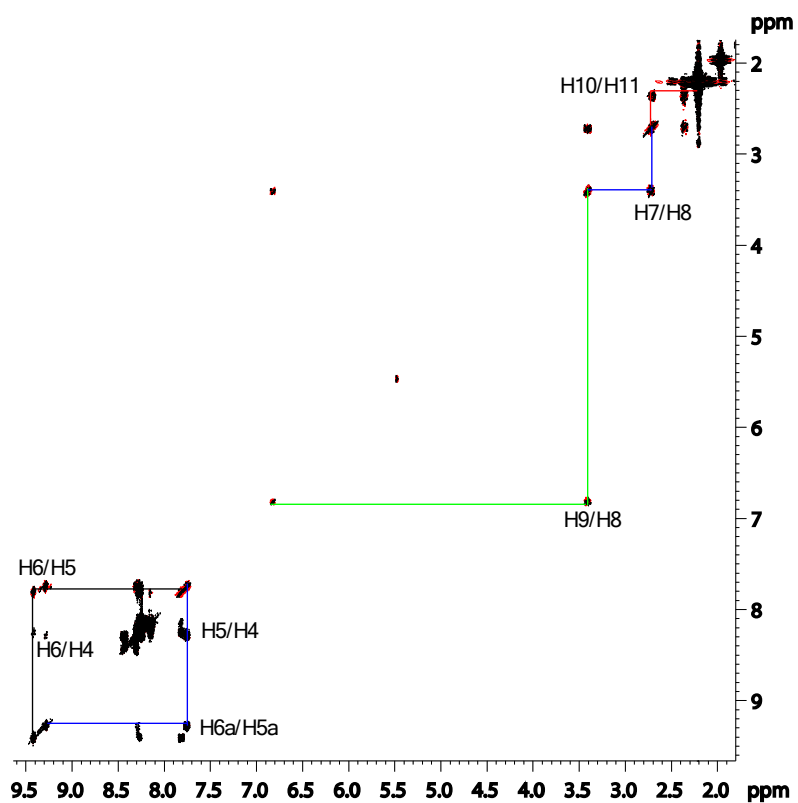


Figure S-2: The COSY spectrum of **4** in d_6 -DMSO with lines of connectivity highlighting cross correlations.

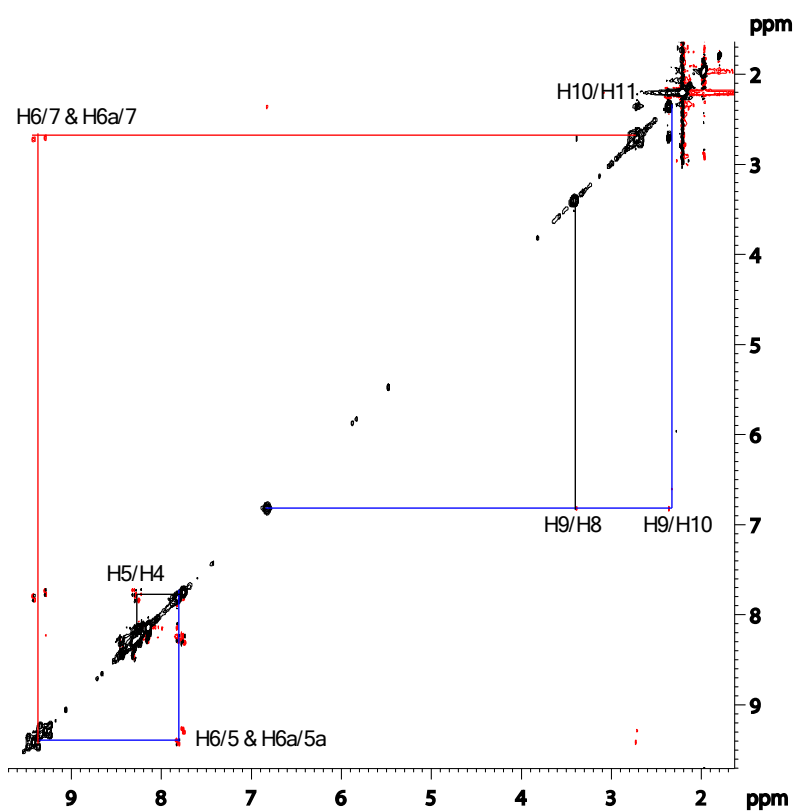


Figure S-3: The ROESY spectrum of **4** in d_6 -DMSO with lines of connectivity highlighting cross correlations.

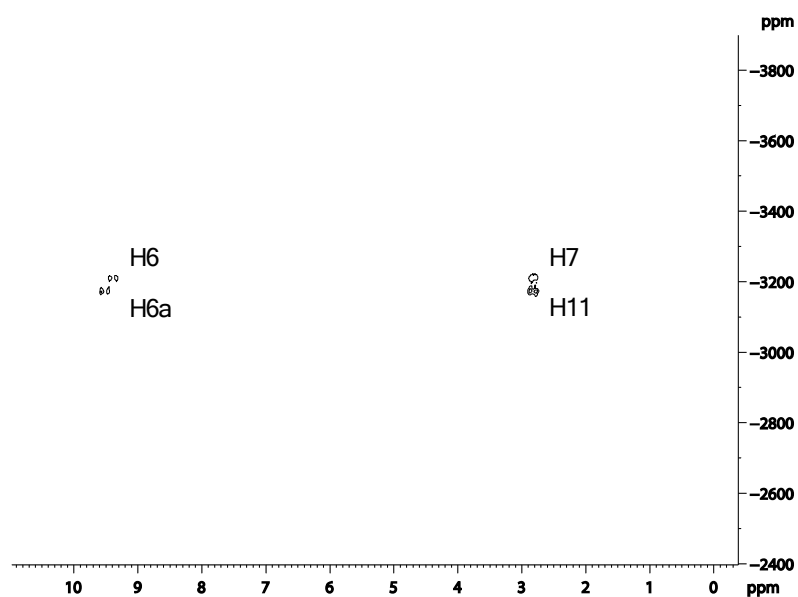


Figure S-4: The ^1H - ^{195}Pt HMQC spectrum of **4** in d_6 -DMSO.

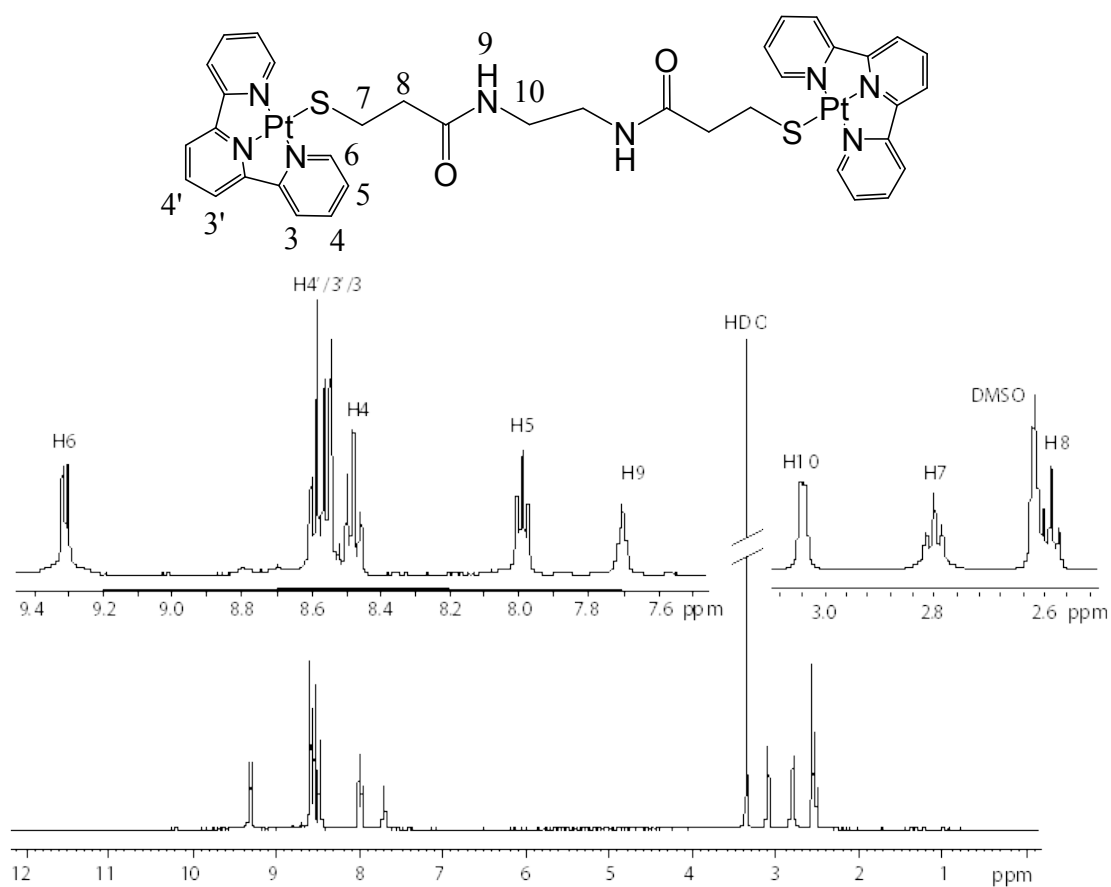


Figure S-9: The chemical structure, numbering and ^1H spectrum of **5** in d_6 -DMSO. Inset: The expansion of the aromatic region between 7.6 and 9.4 ppm and aliphatic region between 2.6 and 3.1 ppm.

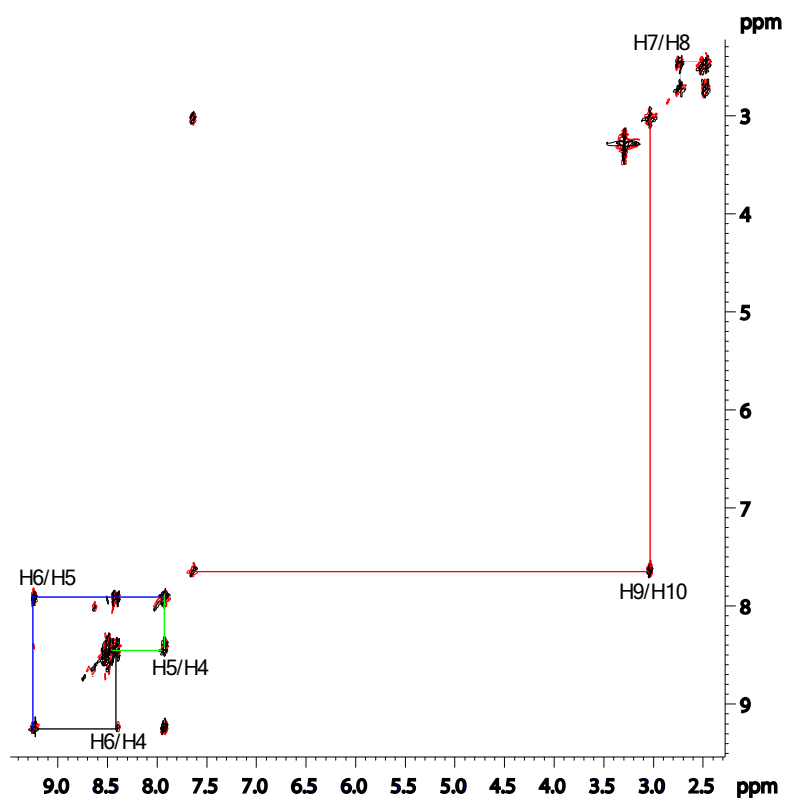


Figure S-10: The COSY spectrum of **5** in d_6 -DMSO with lines of connectivity highlighting cross correlations.

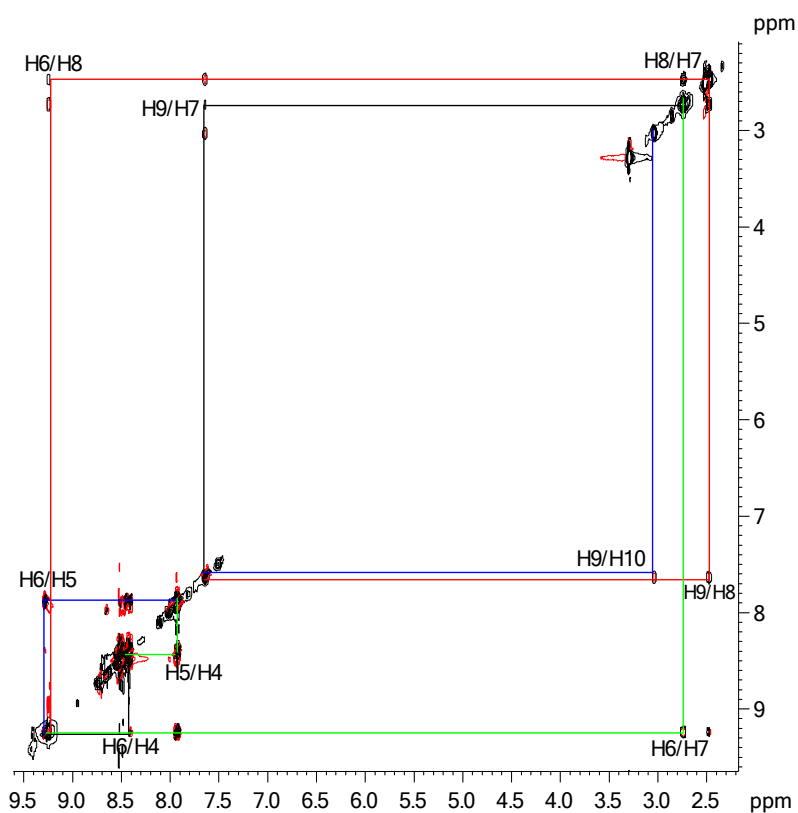


Figure S-11: The ROESY spectrum of **5** in d_6 -DMSO with lines of connectivity highlighting cross correlations.

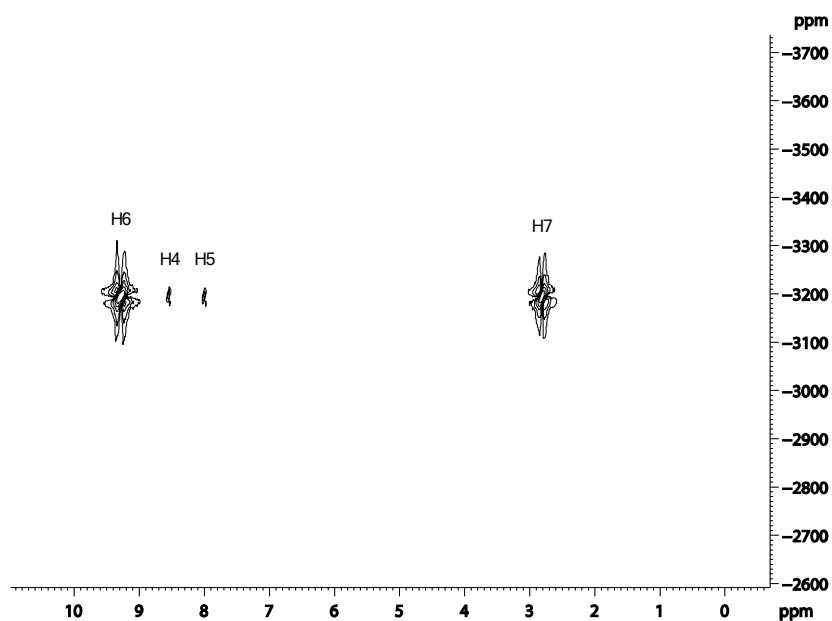


Figure S-12: The ^1H - ^{195}Pt HMQC spectrum of **5** in d_6 -DMSO.

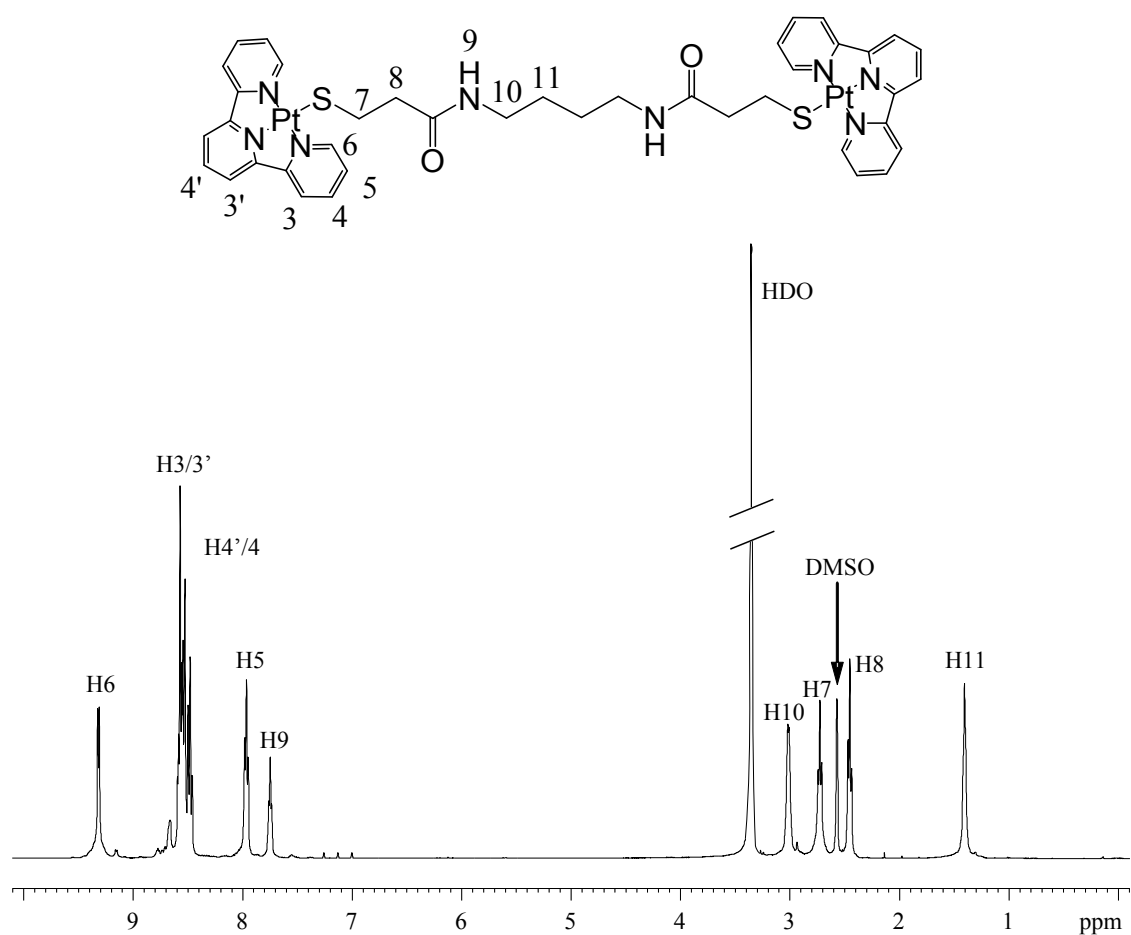


Figure S-13: The chemical structure, numbering and ^1H spectrum of **6** in d_6 -DMSO.

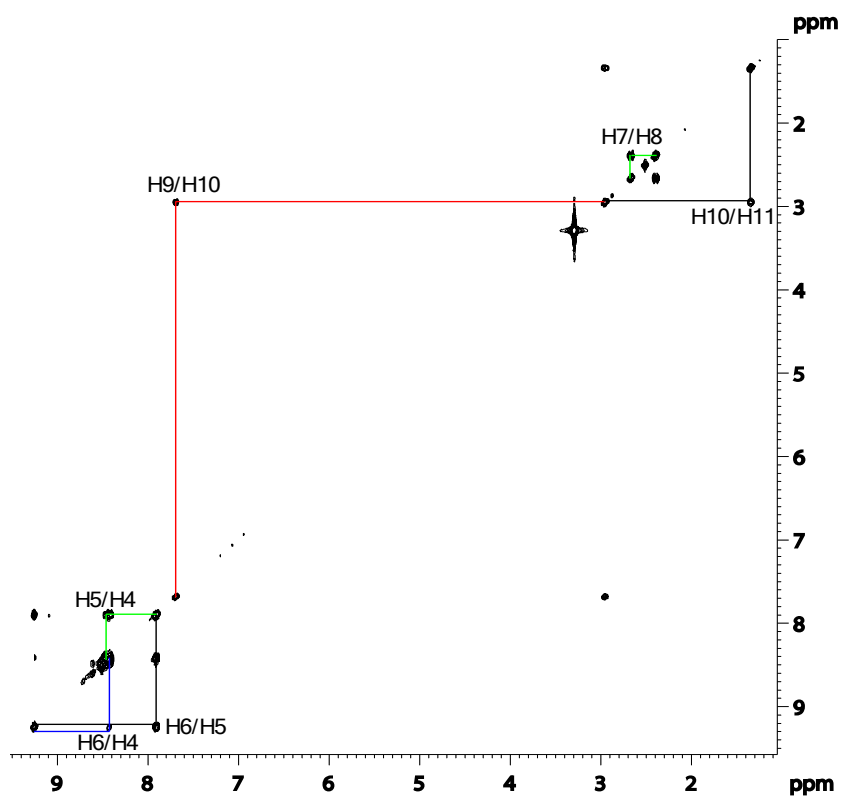


Figure S-14: The COSY spectrum of **6** in d_6 -DMSO with lines of connectivity highlighting cross correlations.

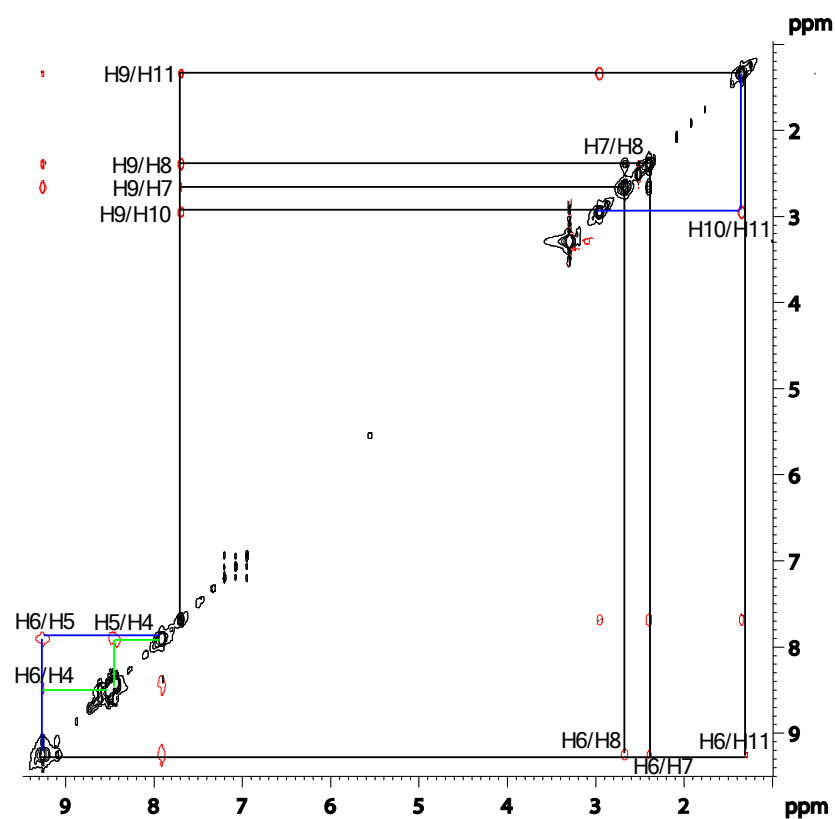


Figure S-15: The ROESY spectrum of **6** in d_6 -DMSO with lines of connectivity highlighting cross correlations.

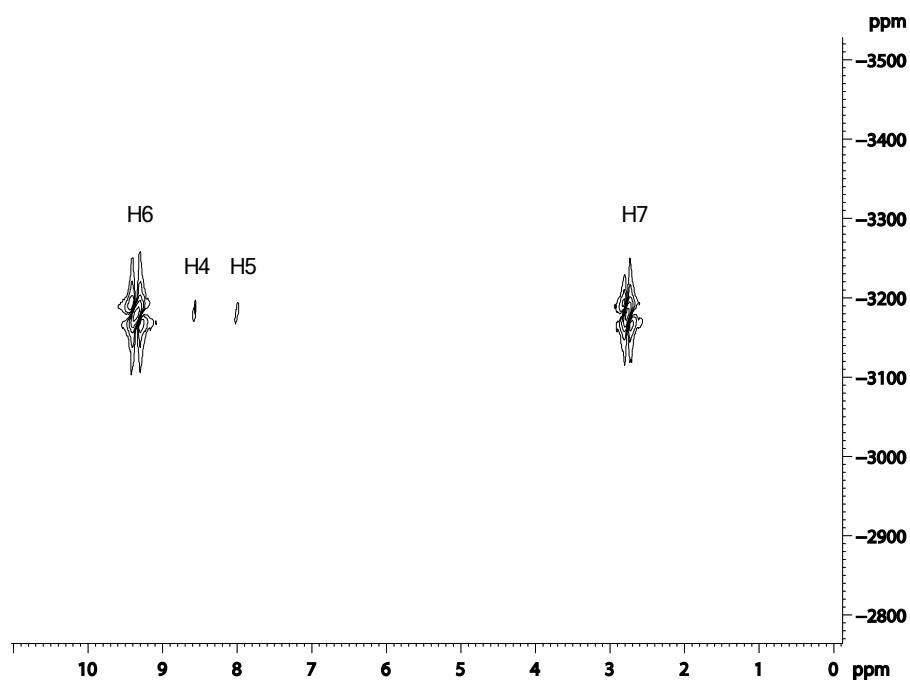


Figure S-16: The ^1H - ^{195}Pt spectrum of **6** in d_6 -DMSO.

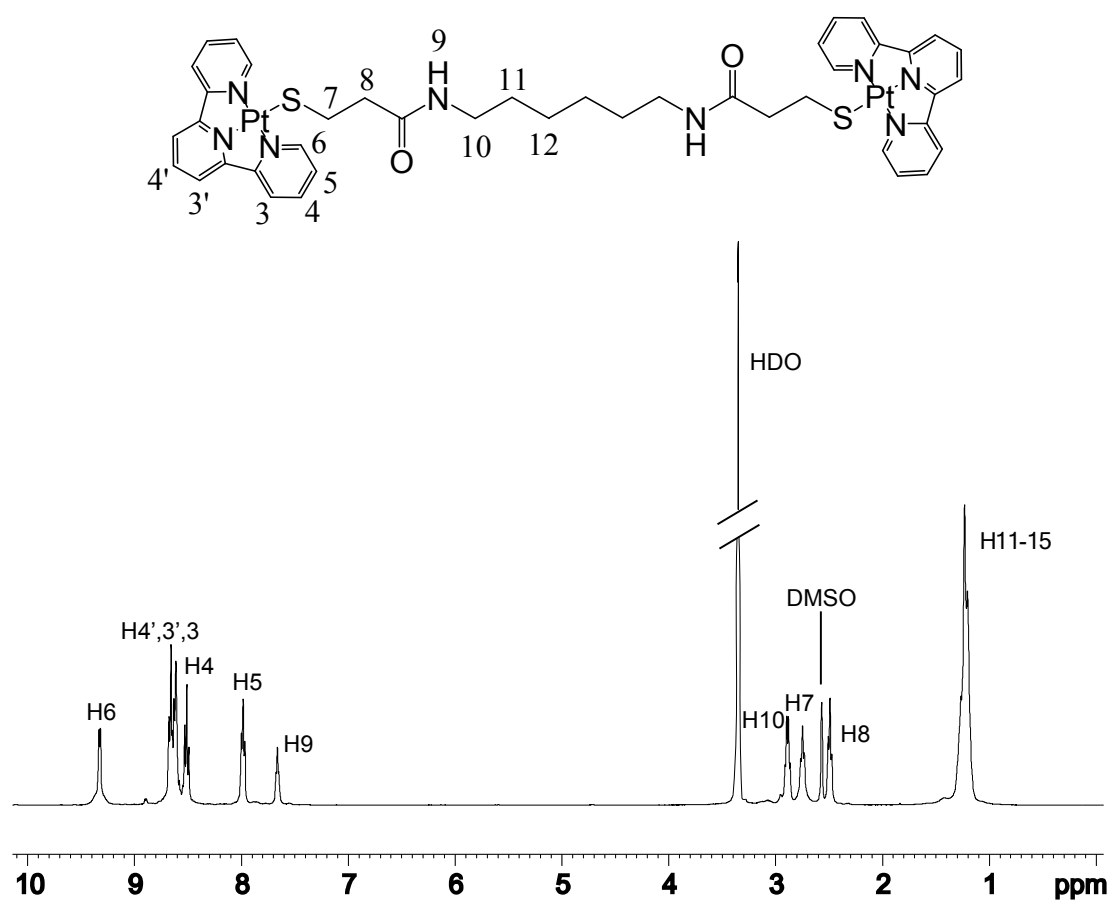


Figure S-17: The chemical structure, numbering and ^1H spectrum of **7** in d_6 -DMSO.

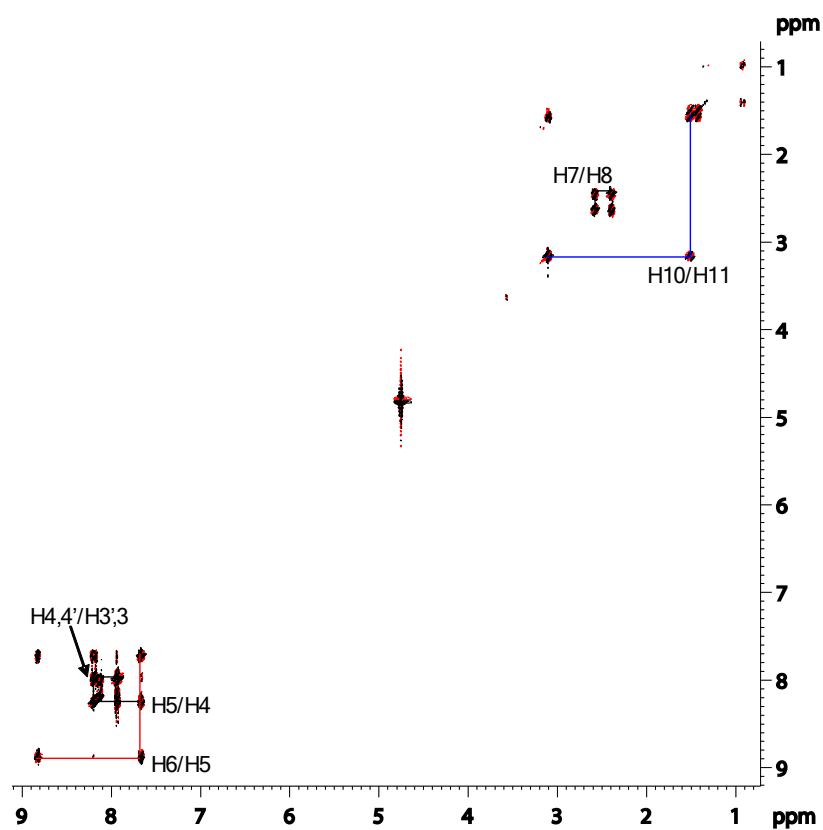


Figure S-18: The COSY spectrum of 7 in d_6 -DMSO with lines of connectivity highlighting cross correlations.

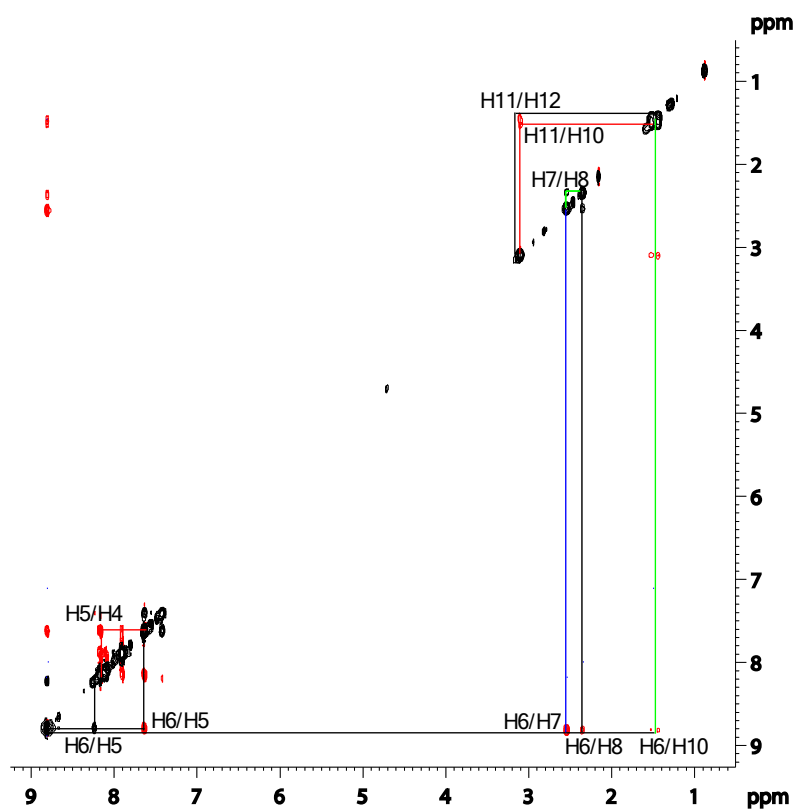


Figure S-19: The ROESY spectrum of 7 in d_6 -DMSO with lines of connectivity highlighting cross correlations.

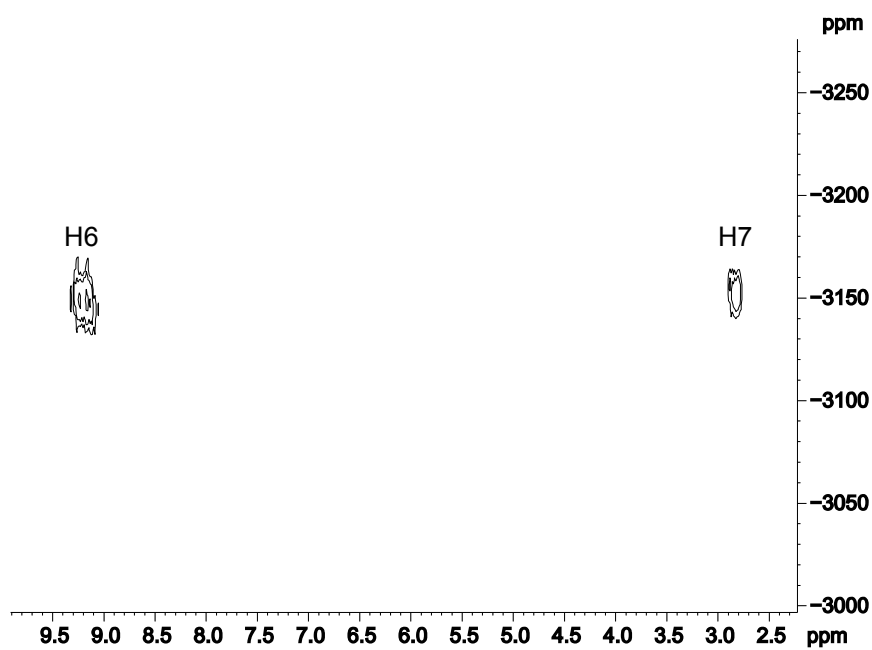


Figure S-20: The ^1H - ^{195}Pt HMQC spectrum of **7** in d_6 -DMSO.

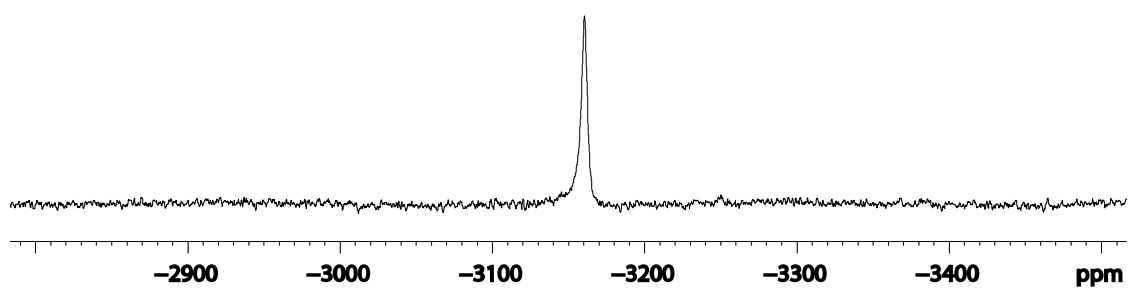


Figure S-21: The ^{195}Pt spectrum of **7** in d_6 -DMSO.

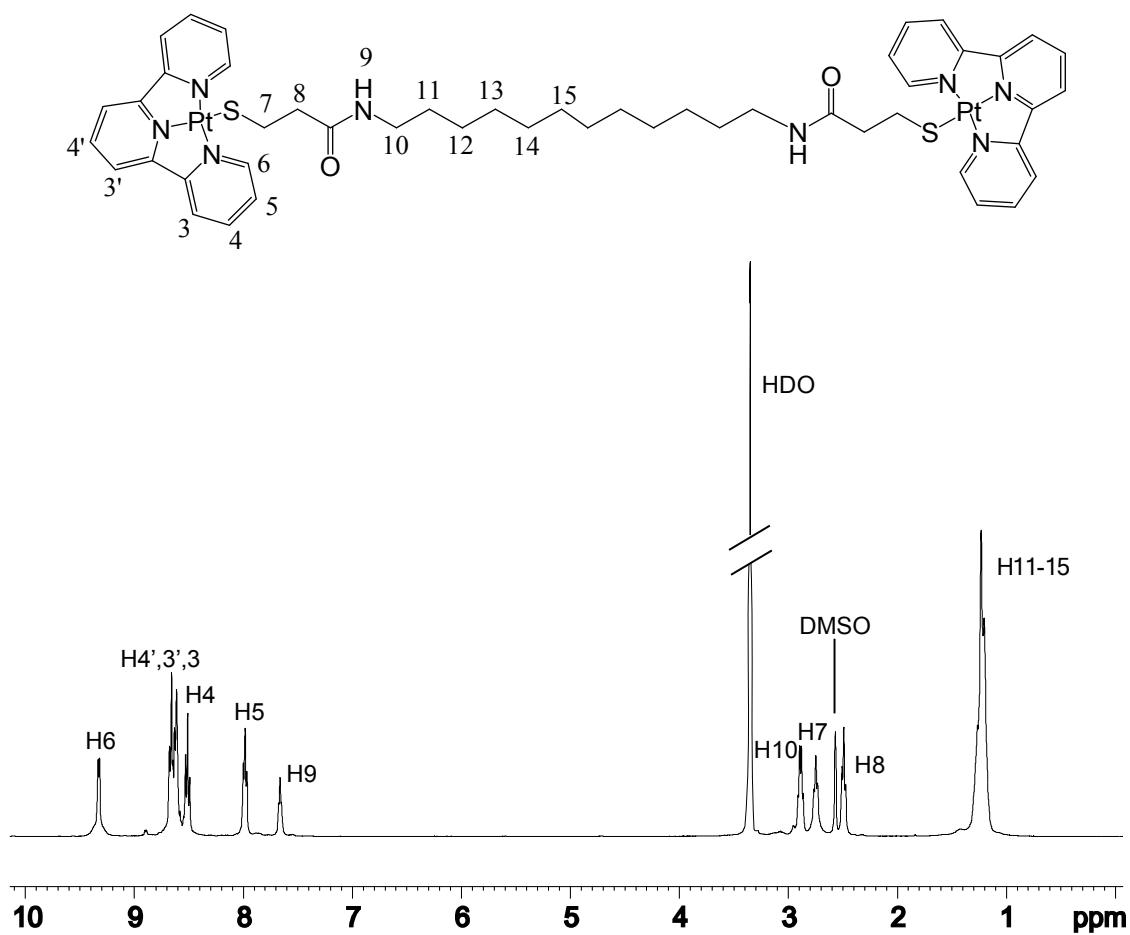


Figure S-22: The chemical structure, numbering and ^1H spectrum of **8** in d_6 -DMSO.

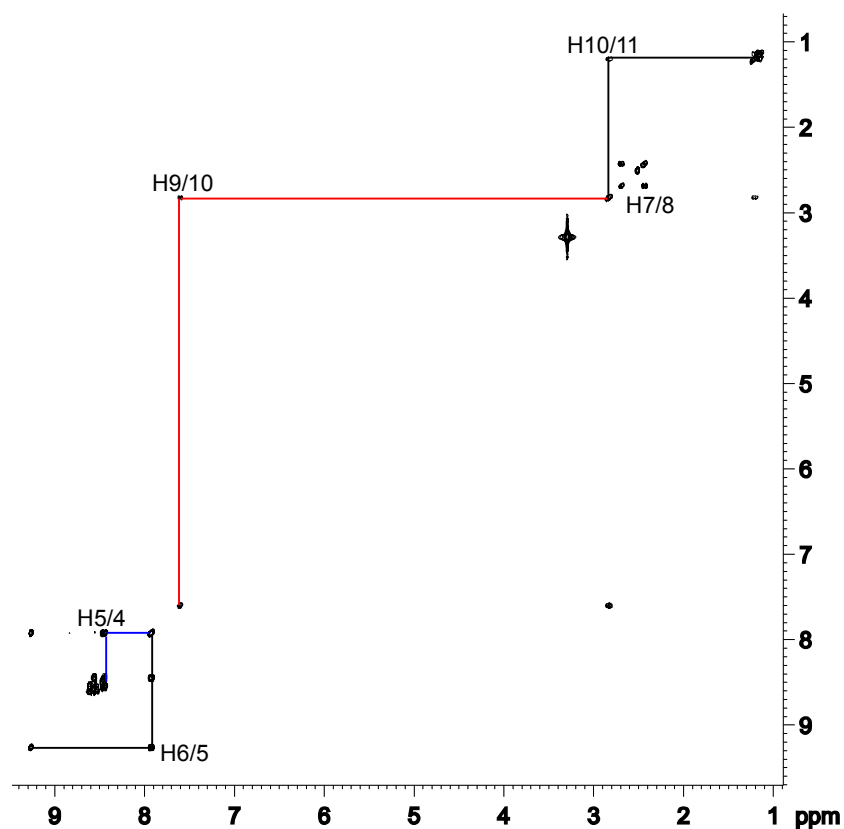


Figure S-23: The COSY spectrum of **8** in d_6 -DMSO with lines of connectivity highlighting cross correlations.

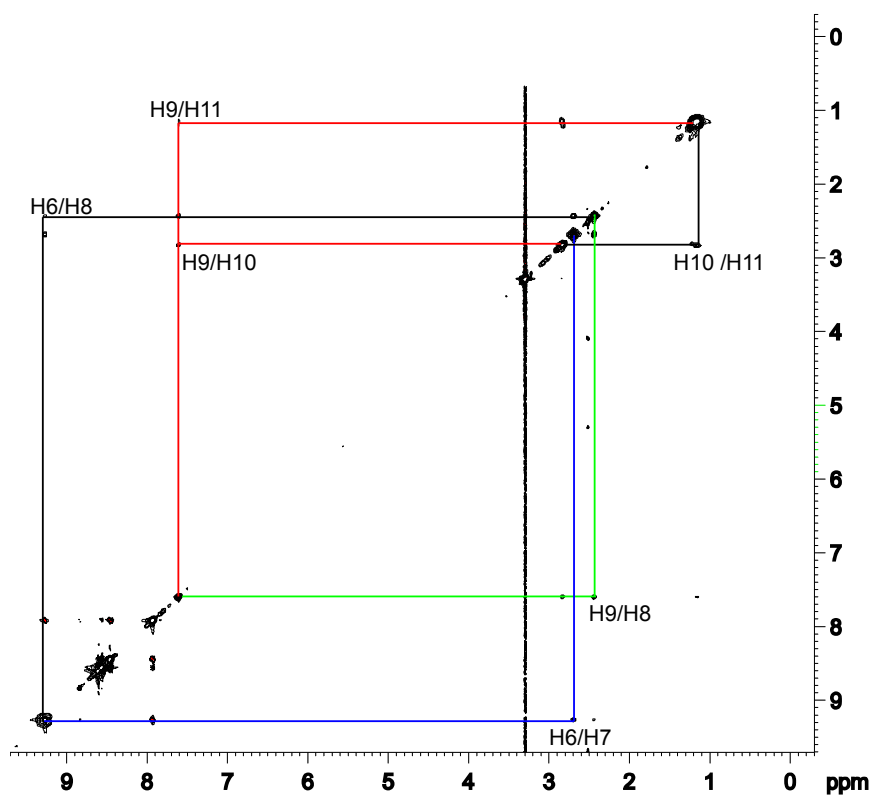


Figure S-24: The ROESY spectrum of **8** in d_6 -DMSO with lines of connectivity highlighting cross correlations.

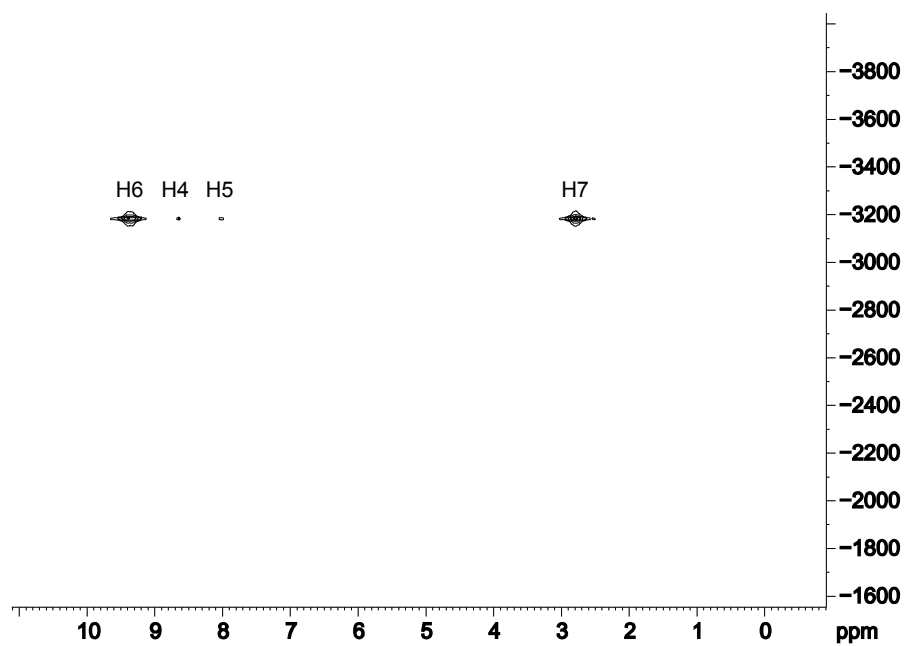


Figure S-25: The ^1H - ^{195}Pt HMQC spectrum of **8** in *d*₆-DMSO.

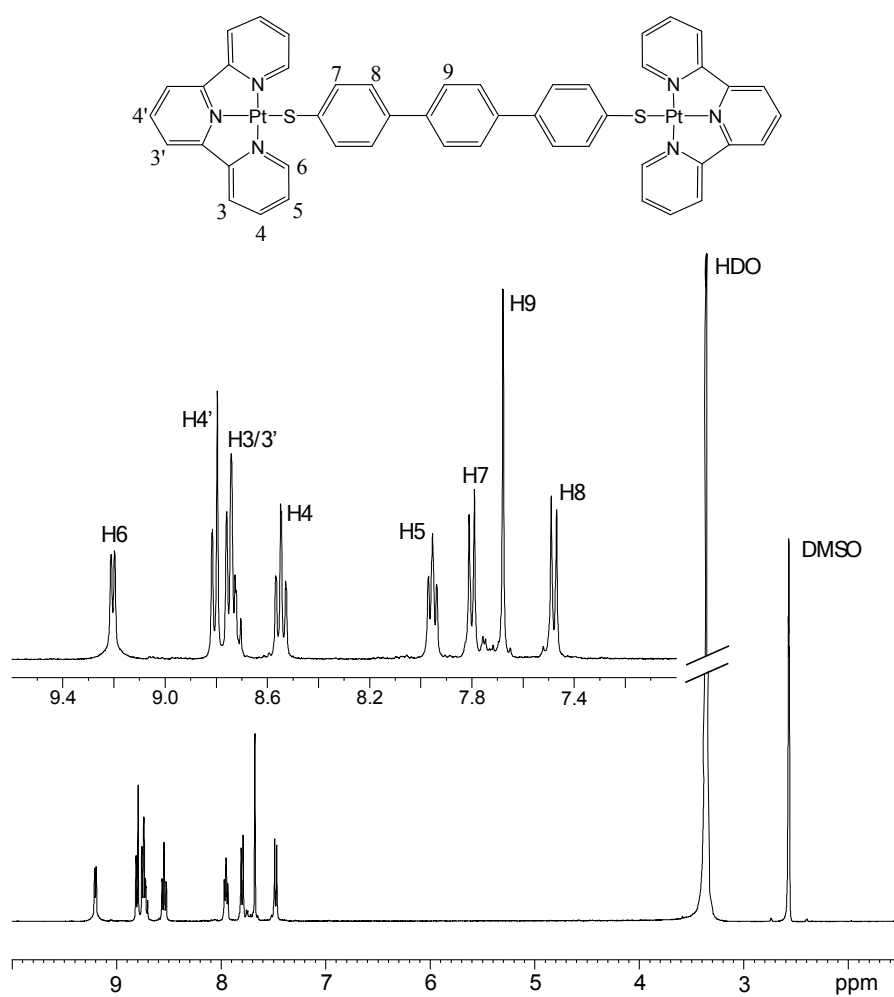


Figure S-46: The ^1H spectrum of **9** in d_6 -DMSO. Inset: The expansion of the aromatic region between 7.4 and 9.4 ppm.

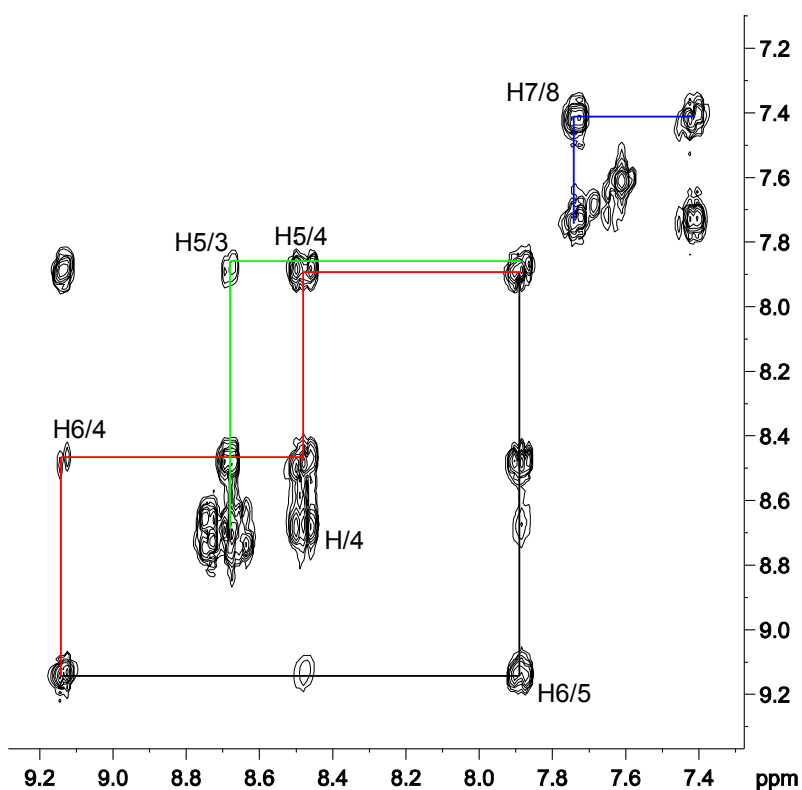


Figure S-47: The COSY spectrum of **9** in d_6 -DMSO with lines of connectivity highlighting cross correlations.

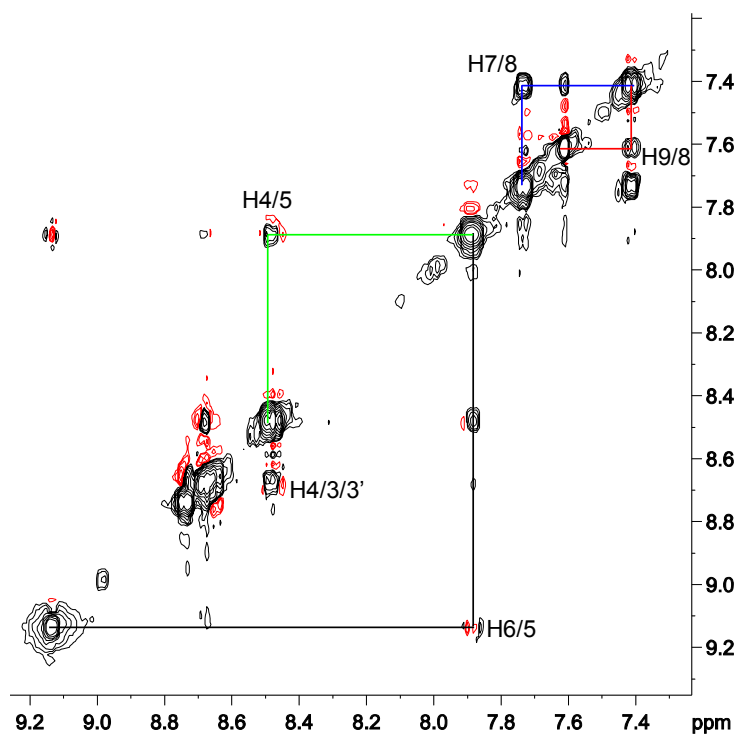


Figure S-48: The NOESY spectrum of **9** in d_6 -DMSO with lines of connectivity highlighting cross correlations.

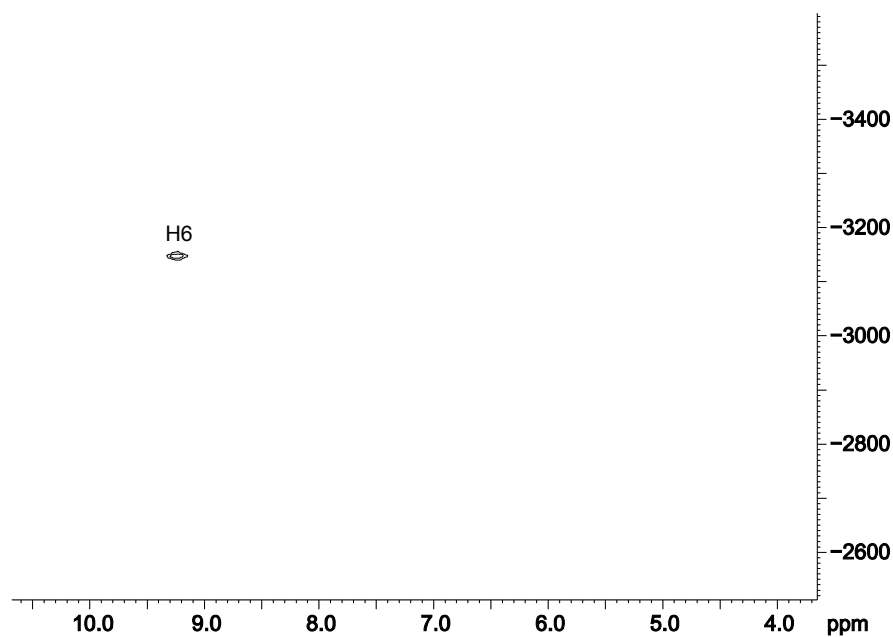


Figure S-49: The ^1H - ^{195}Pt HMQC spectrum of **9** in d_6 -DMSO.

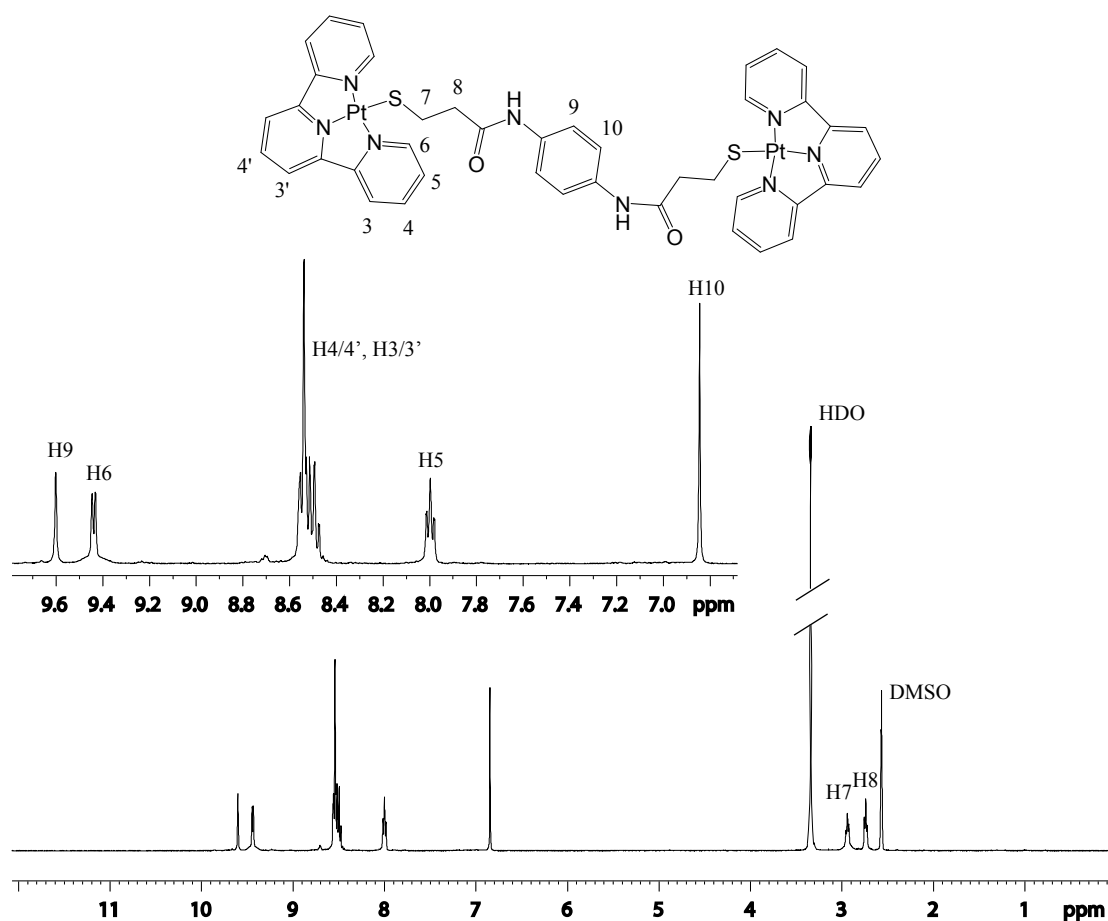


Figure S-26: The chemical structure, numbering and ^1H spectrum of **10** in d_6 -DMSO. Inset: The expansion of the aromatic region between 6.8 and 9.6 ppm.

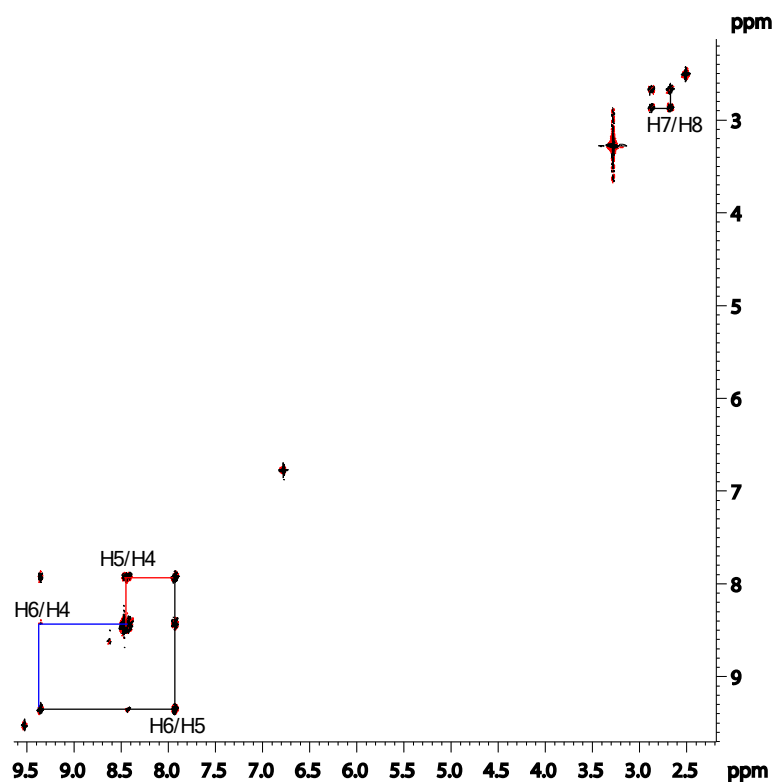


Figure S-27: The COSY spectrum of **10** in d_6 -DMSO with lines of connectivity highlighting cross correlations.

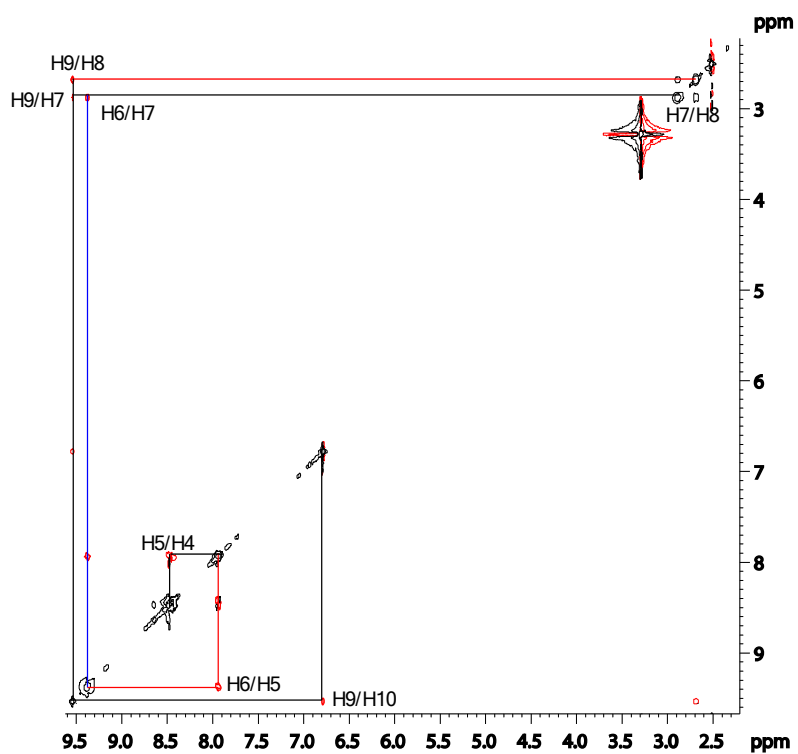


Figure S-28: The ROESY spectrum of **10** in d_6 -DMSO with lines of connectivity highlighting cross correlations.

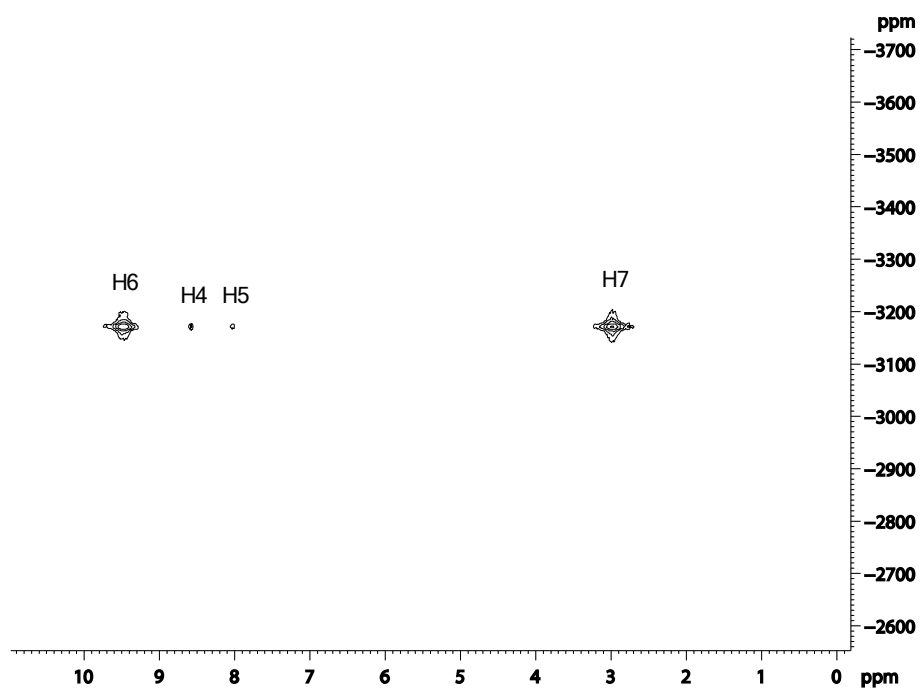


Figure S-29: The ^1H - ^{195}Pt HMQC spectrum of **10** in d_6 -DMSO.

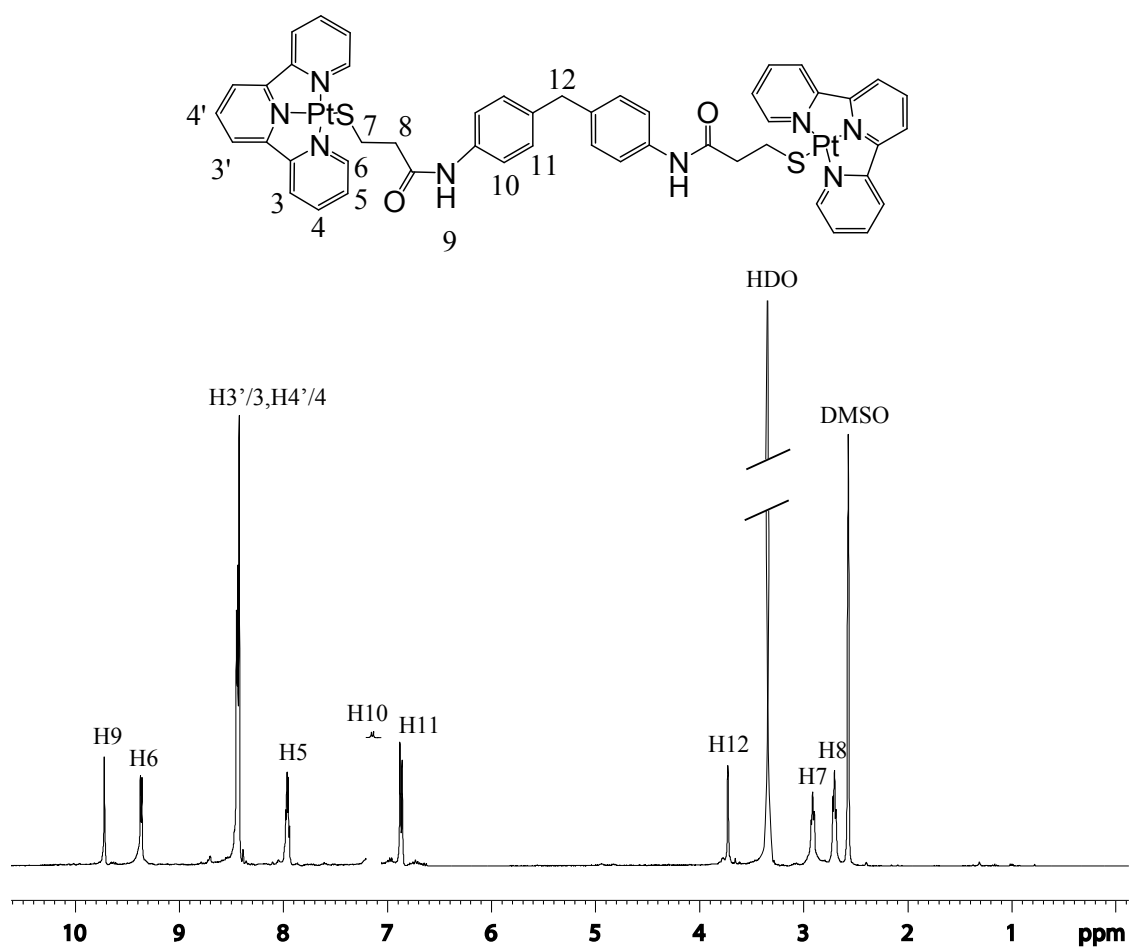


Figure S-30: The chemical structure, numbering and ^1H spectrum of **11** in d_6 -DMSO.

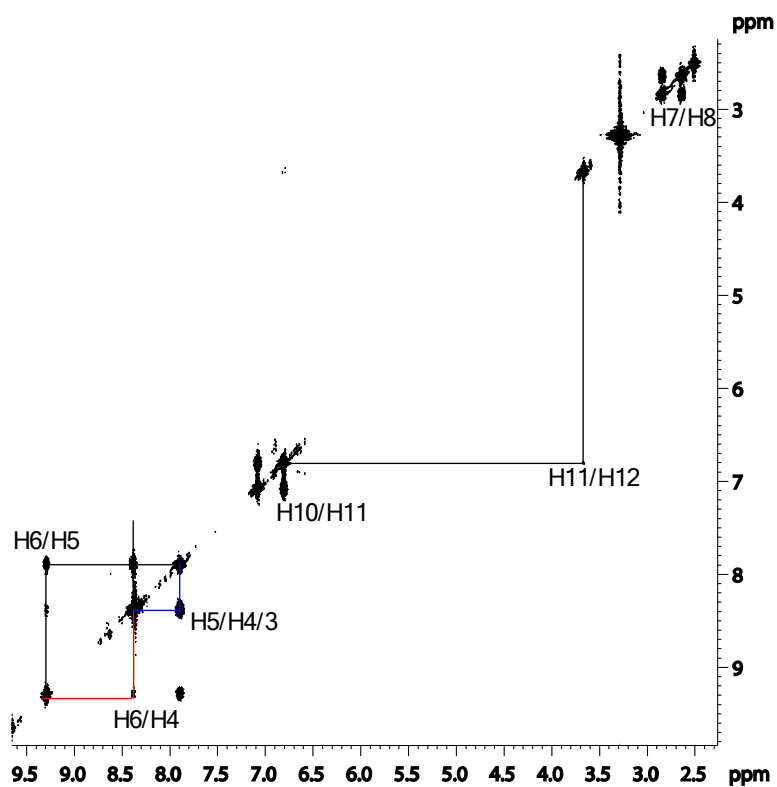


Figure S-31: The COSY spectrum of **11** in d_6 -DMSO with lines of connectivity highlighting cross correlations.

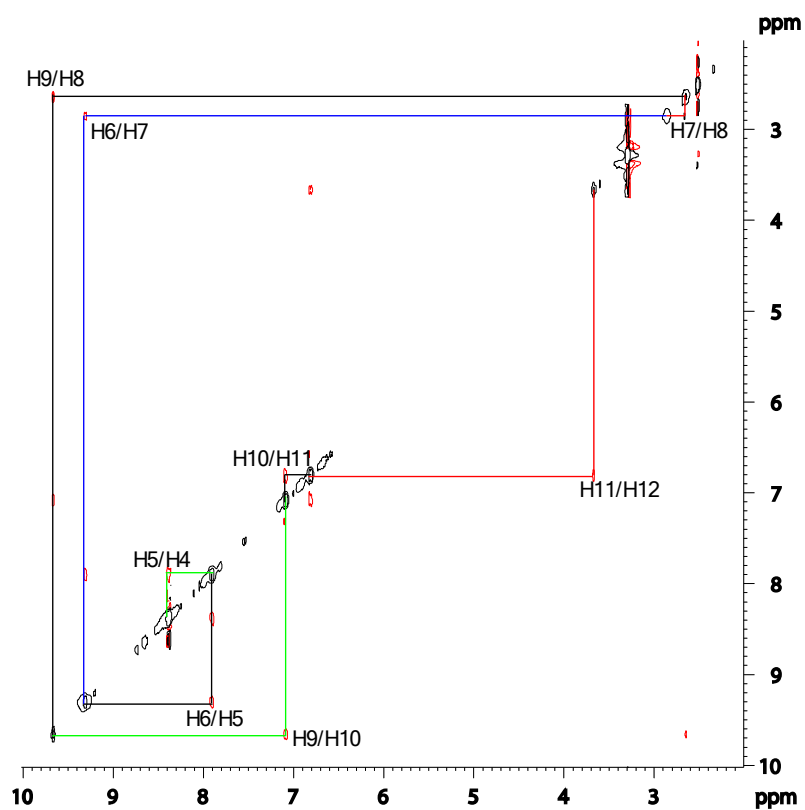


Figure S-32: The ROESY spectrum of **11** in d_6 -DMSO with lines of connectivity highlighting cross correlations.

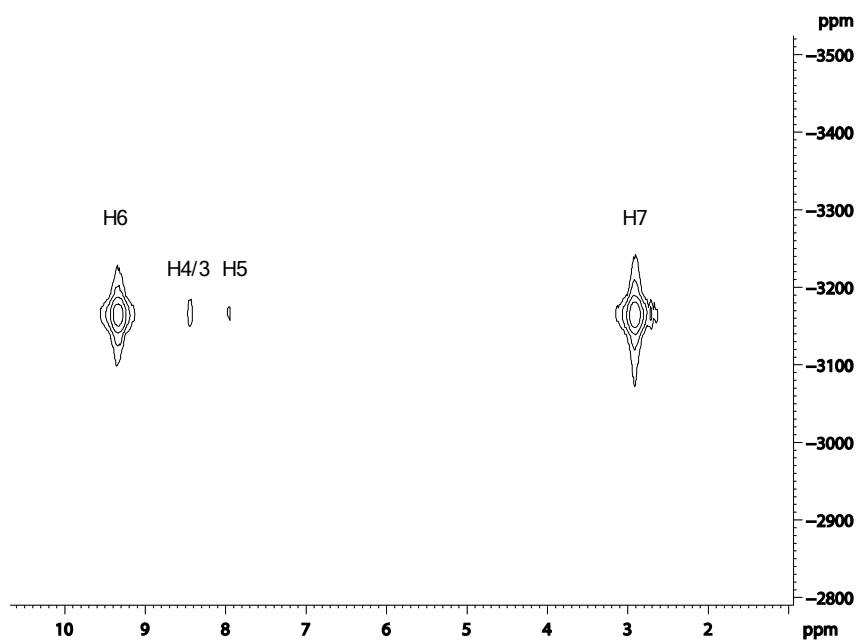


Figure S-33: The ^1H - ^{195}Pt HMQC spectrum of **11** in d_6 -DMSO.

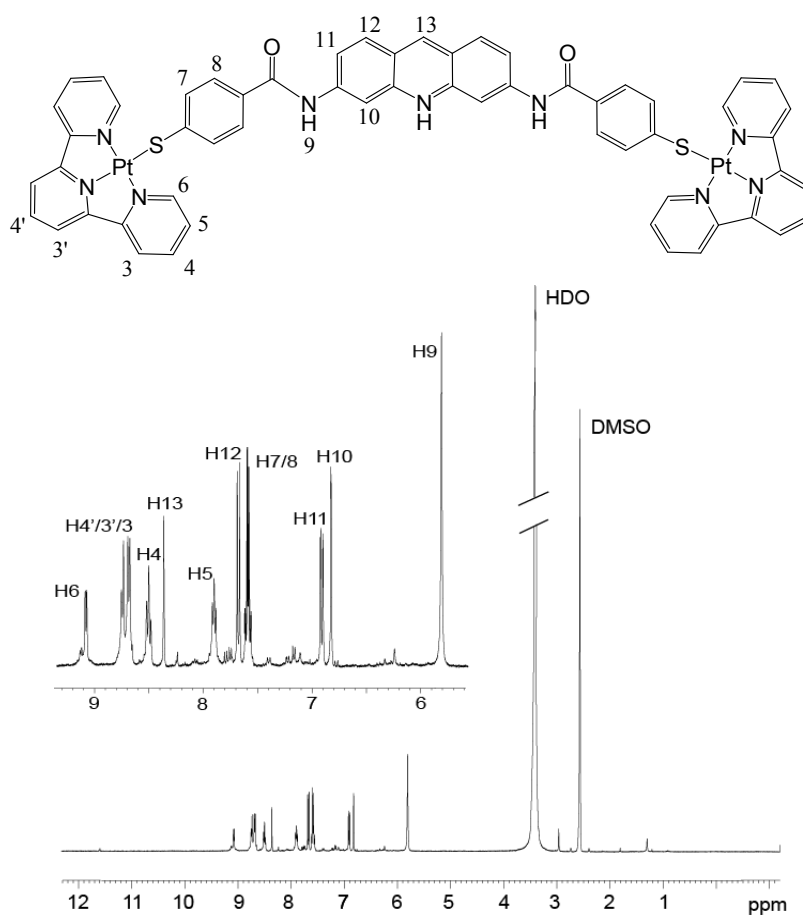


Figure S-5: The chemical structure, numbering and ^1H spectrum of **12** in d_6 -DMSO. Inset: The expansion of the aromatic region between 6.5 and 10.5 ppm.

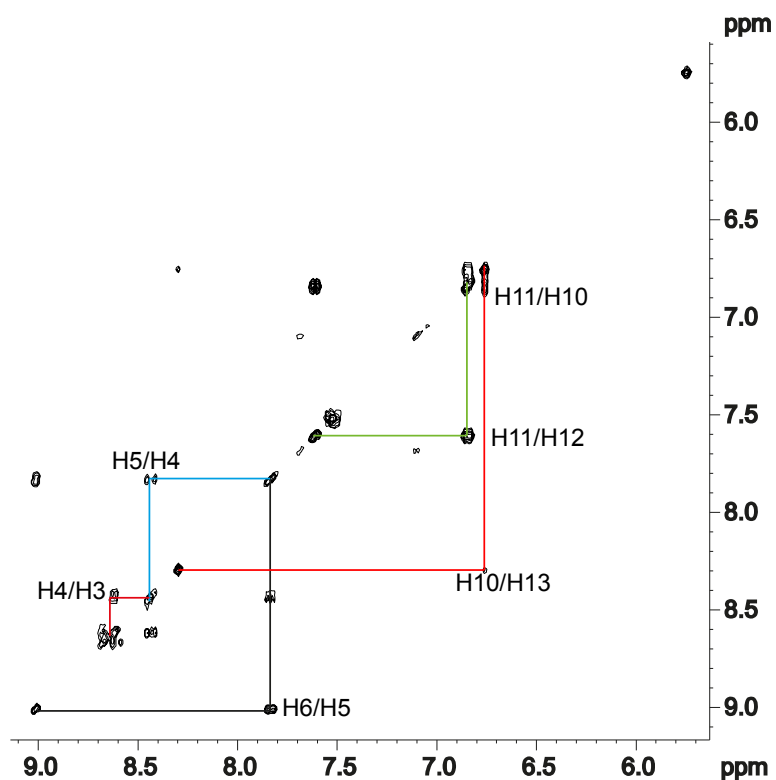


Figure S-6: The COSY expansion spectrum of **12** in d_6 -DMSO with lines of connectivity highlighting cross correlations.

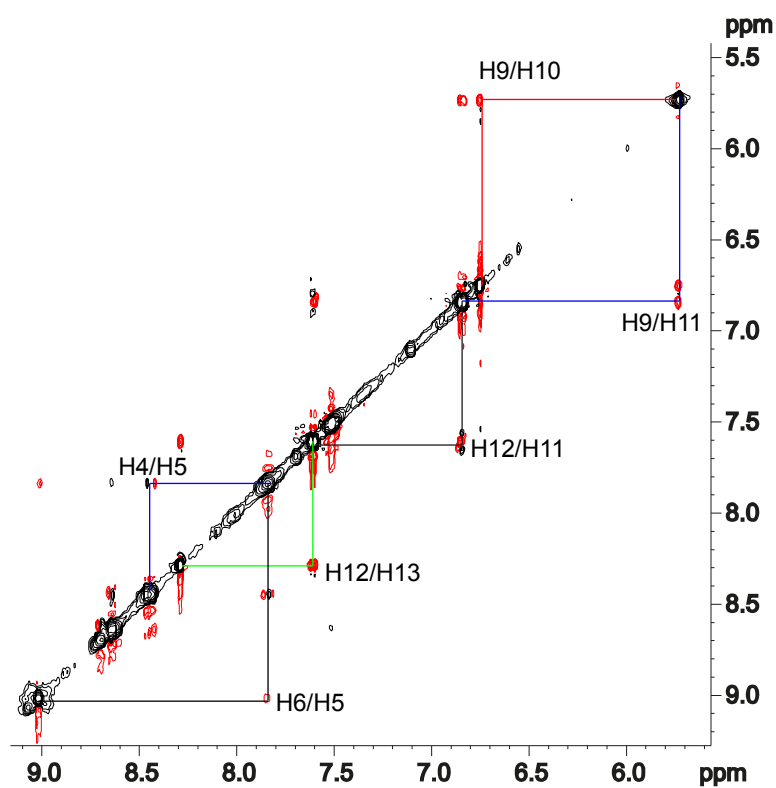


Figure S-7: The NOESY expansion spectrum of **12** in d_6 -DMSO with lines of connectivity highlighting cross correlations.

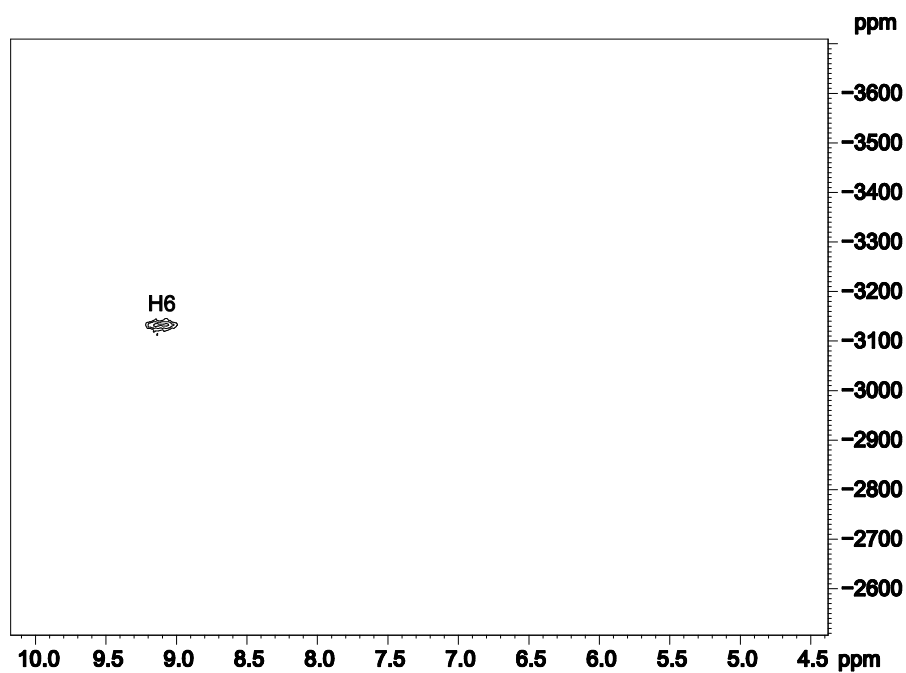


Figure S-8: The ^1H - ^{195}Pt HMQC spectrum of **12** in d_6 -DMSO.

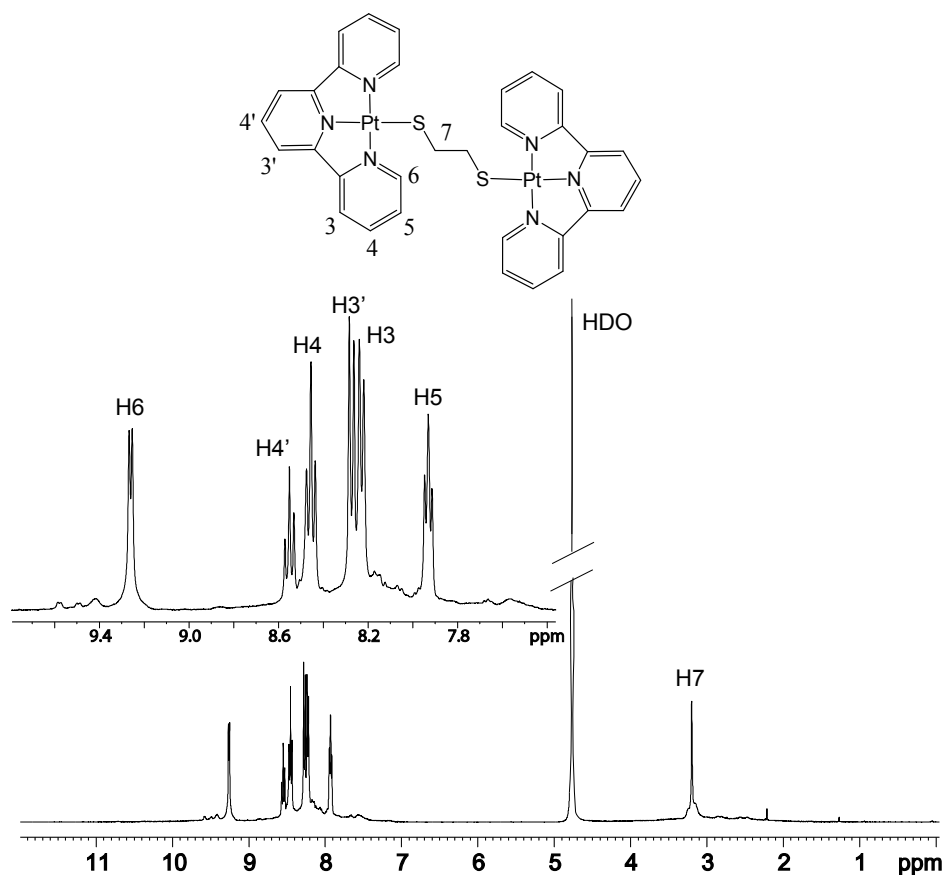


Figure S-34: The chemical structure, numbering and ^1H spectrum of **13** in D_2O . Inset: The expansion of the aromatic region between 7.8 and 9.4 ppm.

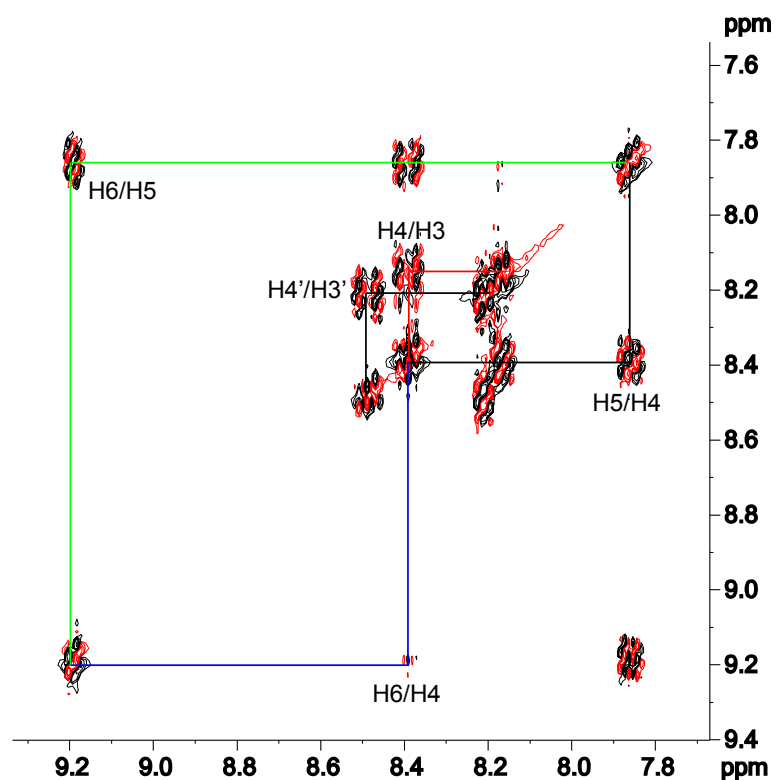


Figure S-35: The expanded COSY spectrum of **13** in D₂O with lines of connectivity highlighting cross correlations.

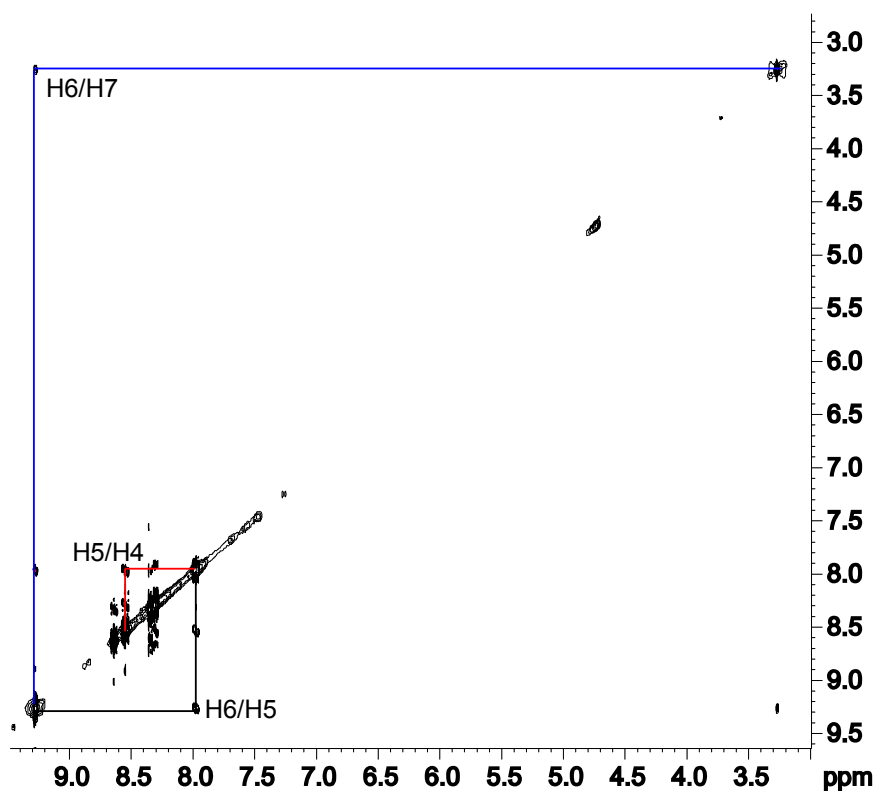


Figure S-36: The ROESY spectrum of **13** in D₂O with lines of connectivity highlighting cross correlations.

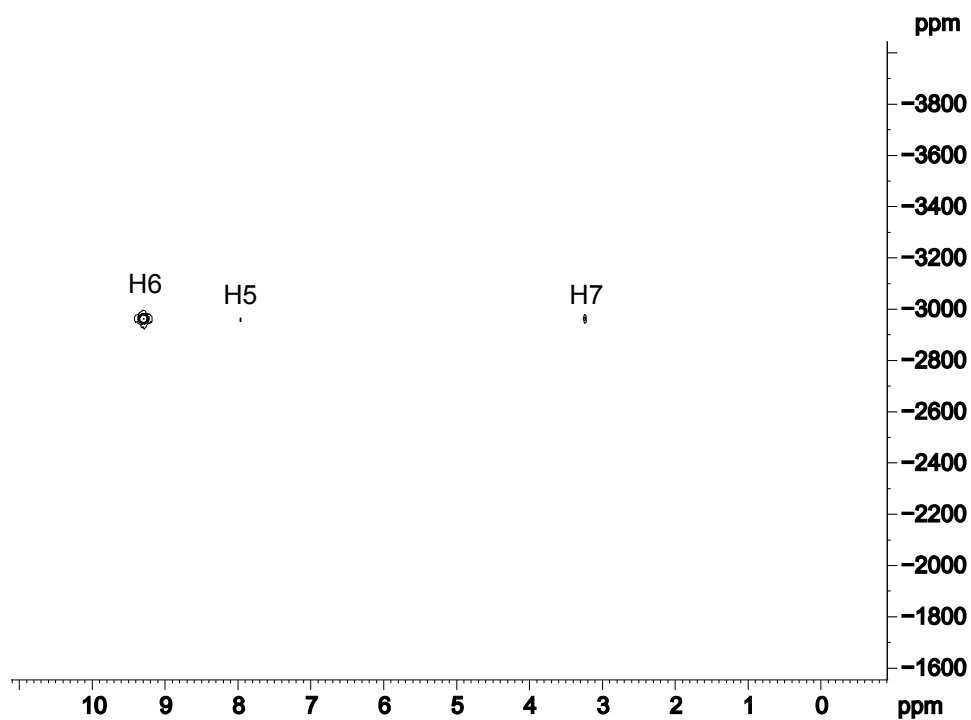


Figure S-37: The ^1H - ^{195}Pt spectrum of **13** in d_6 -DMSO.

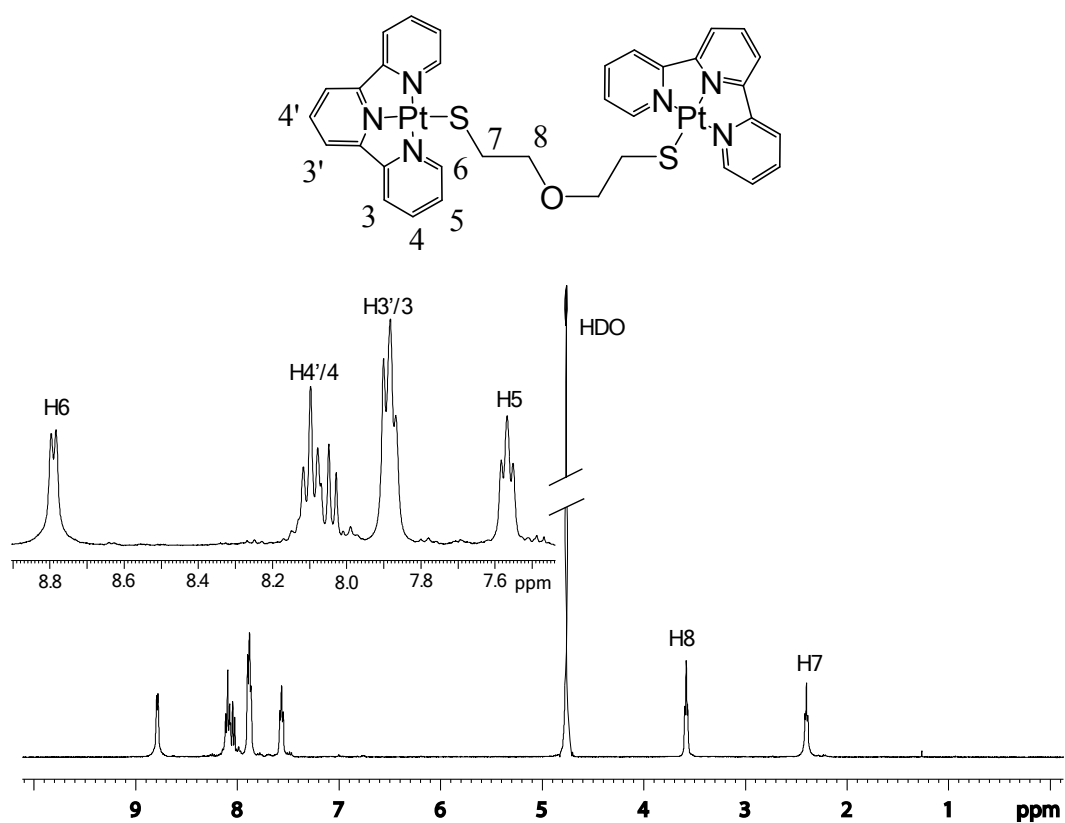


Figure S-38: The chemical structure, numbering and ^1H spectrum of **14** in d_6 -DMSO. Inset: The expansion of the aromatic region between 7.5 and 8.8 ppm.

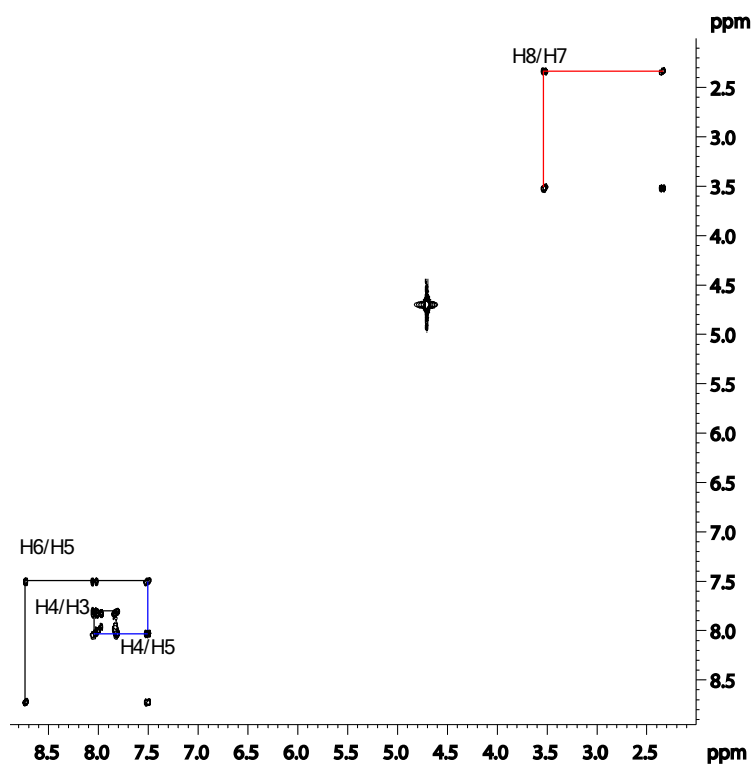


Figure S-39: The COSY spectrum of **14** in d_6 -DMSO with lines of connectivity highlighting cross correlations.

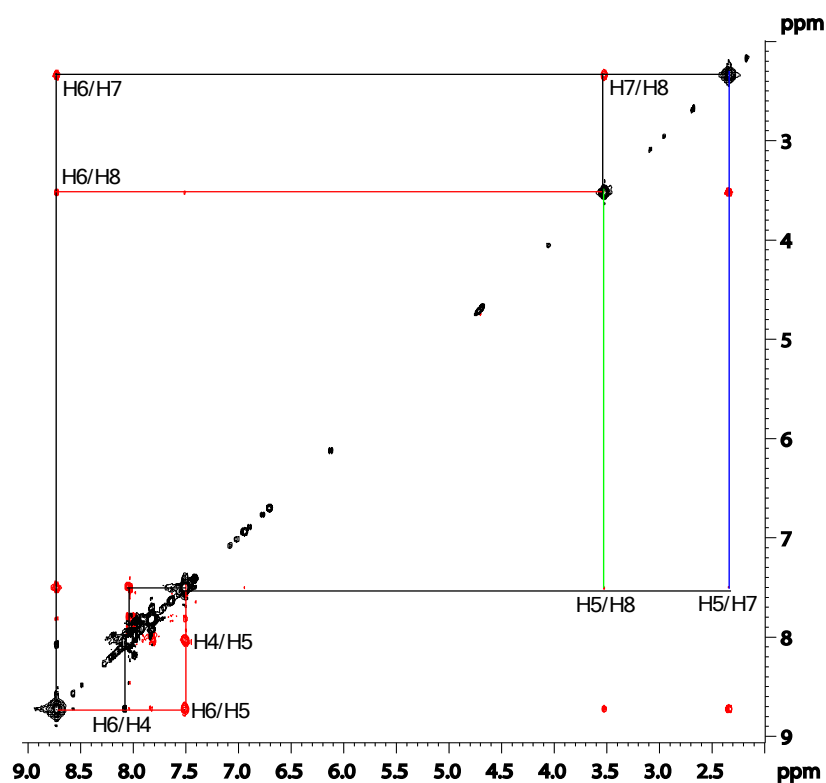


Figure S-40: The ROESY spectrum of **14** in d_6 -DMSO with lines of connectivity highlighting cross correlations.

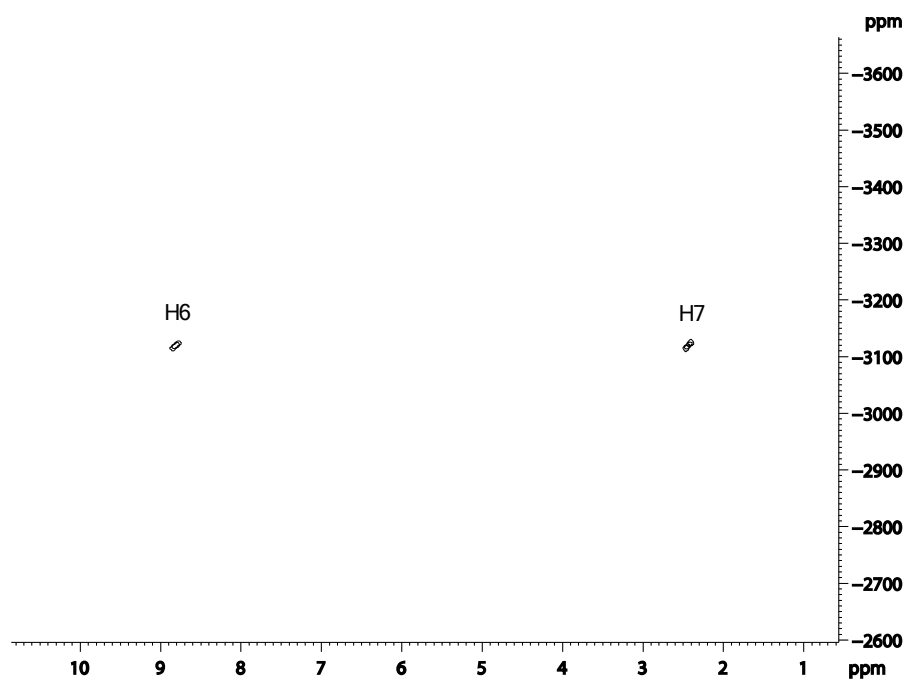


Figure S-41: The ^1H - ^{195}Pt HMQC spectrum of **14** in d_6 -DMSO.

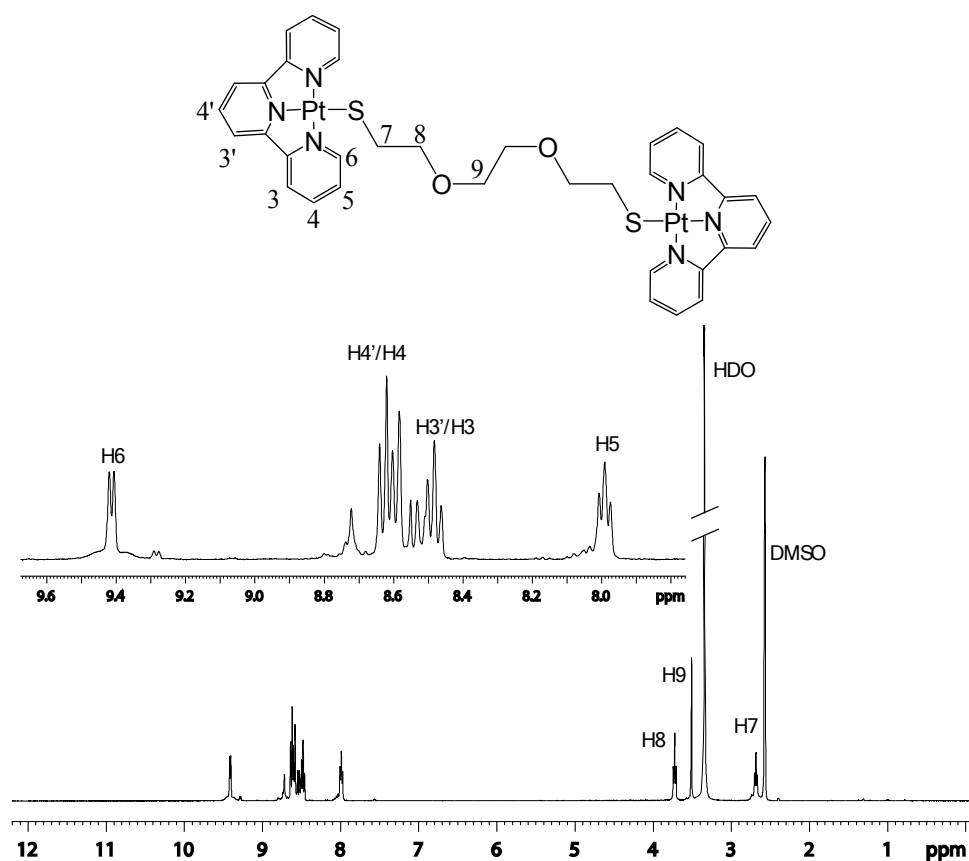


Figure S-42: The chemical structure, numbering and ^1H spectrum of **15** in d_6 -DMSO. Inset: The expansion of the aromatic region between 8.0 and 9.5 ppm.

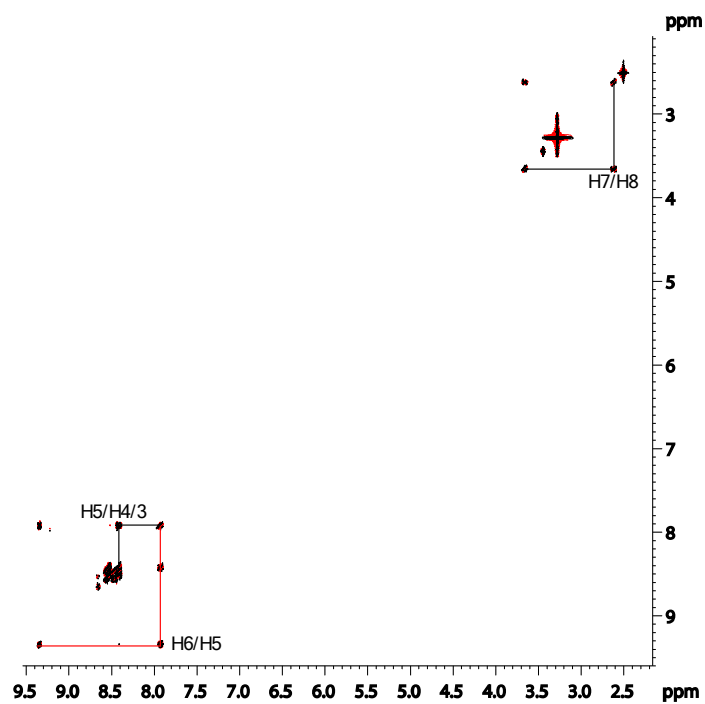


Figure S-43: The COSY spectrum of **15** in d_6 -DMSO with lines of connectivity highlighting cross correlations.

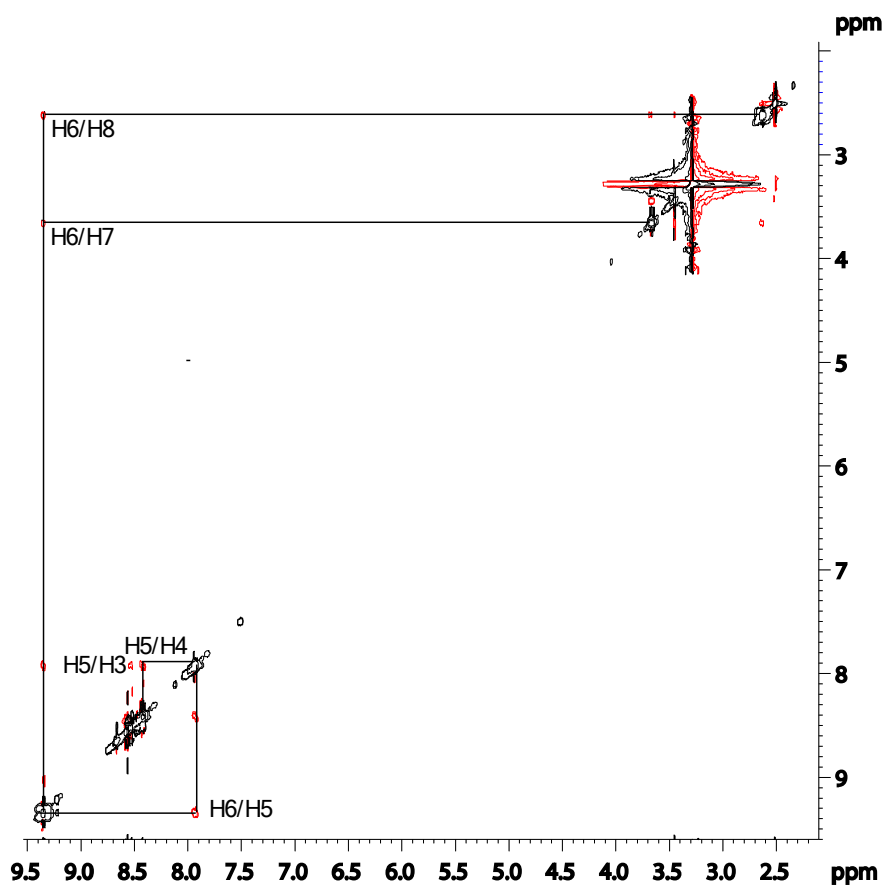


Figure S-44: The ROESY spectrum of **15** in d_6 -DMSO with lines of connectivity highlighting cross correlations.

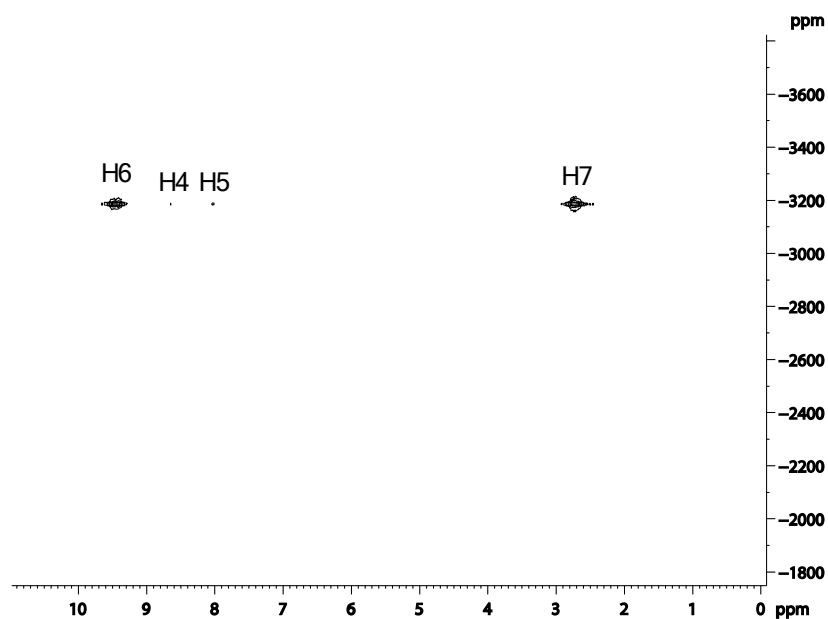


Figure S-45: The ^1H - ^{195}Pt HMQC spectrum of **15** in d_6 -DMSO.

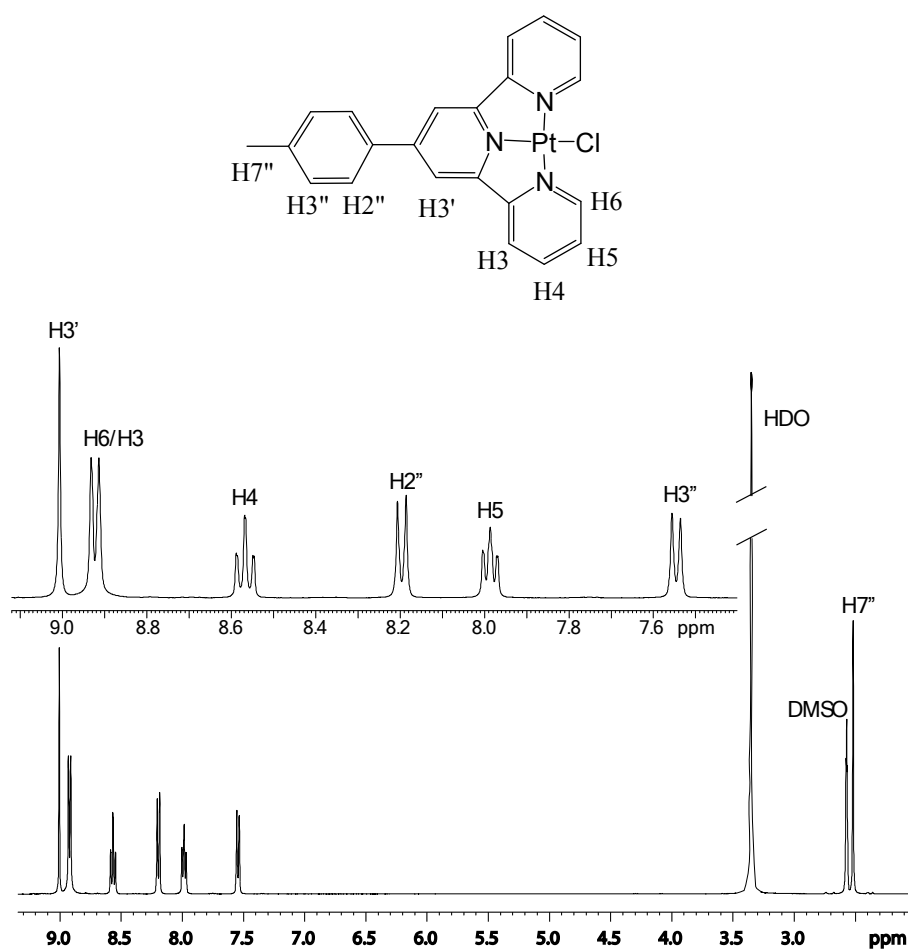


Figure S-62: The chemical structure, numbering and ^1H spectrum of $[\text{Pt}(4'\text{MPterpy})\text{Cl}]\text{Cl}$ in d_6 -DMSO. Inset: The expansion of the aromatic region between 7.5 and 9.0 ppm.

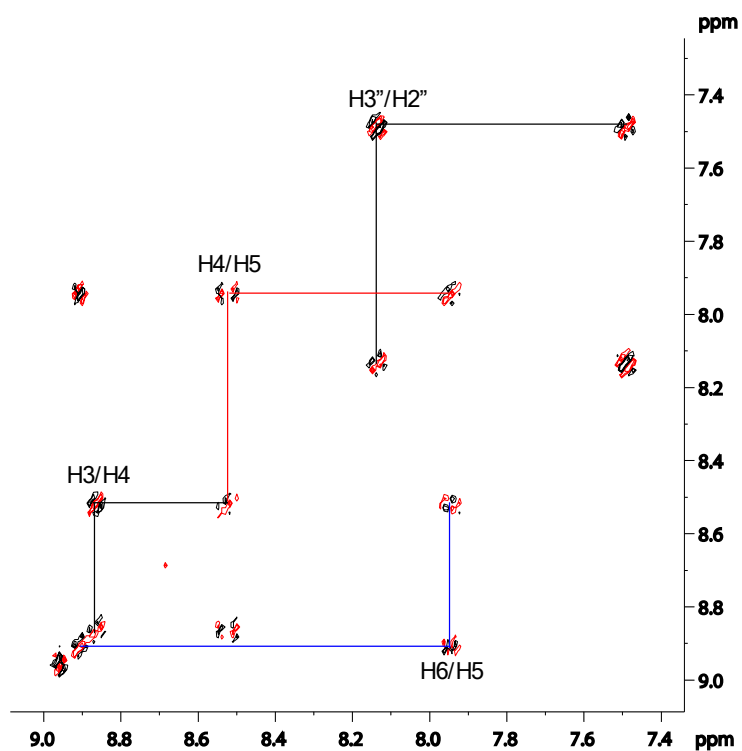


Figure S-63: The COSY spectrum of [Pt(4'MPterpy)Cl]Cl in d_6 -DMSO with lines of connectivity highlighting cross correlations.

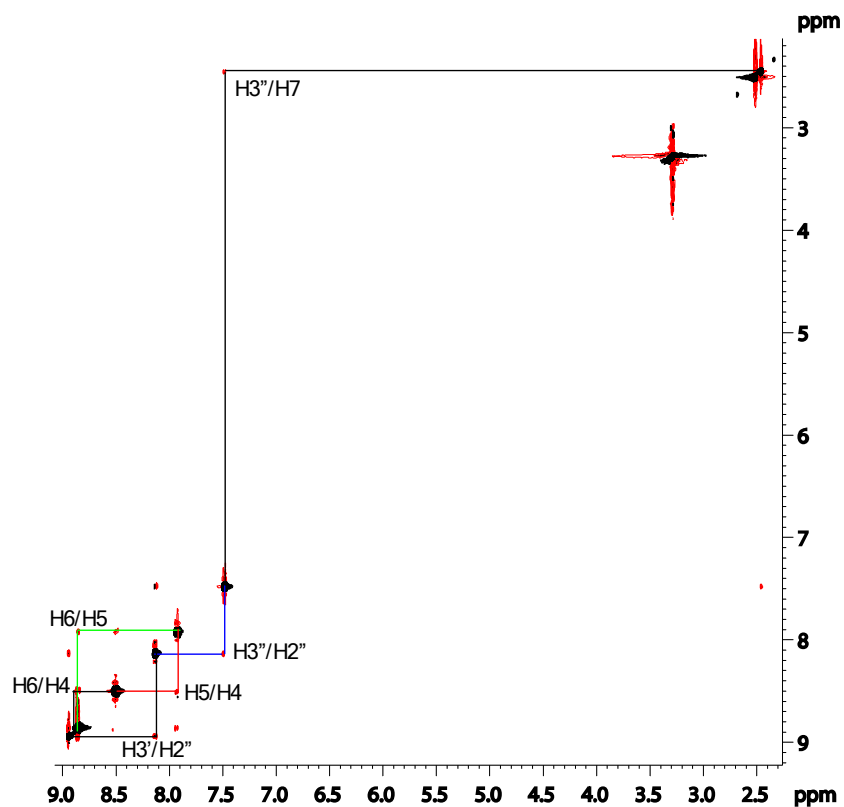


Figure S-64: The NOESY spectrum of [Pt(4'MPterpy)Cl]Cl in d_6 -DMSO with lines of connectivity highlighting cross correlations.

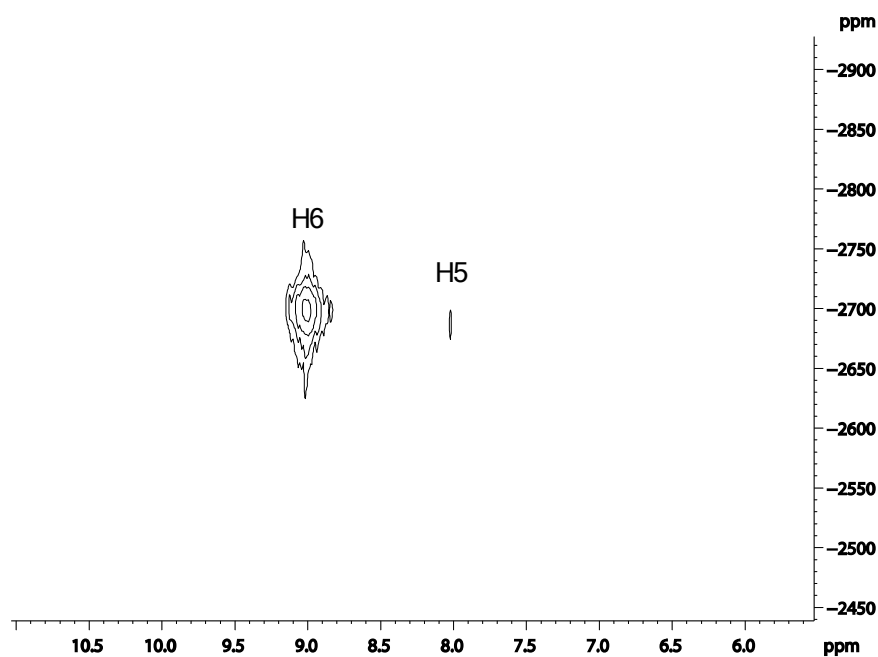


Figure S-65: The ^1H - ^{195}Pt HMQC spectrum of $[\text{Pt}(4'\text{MPterpy})\text{Cl}]\text{Cl}$ in d_6 -DMSO.

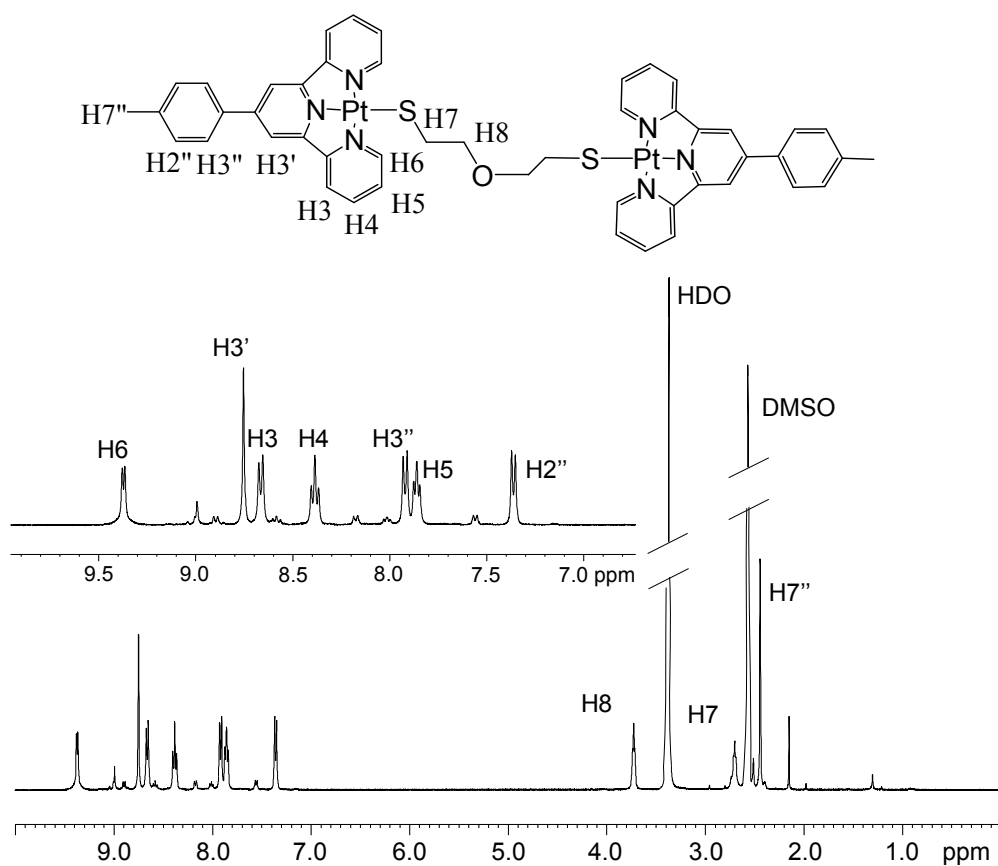


Figure S-66: The chemical structure, numbering and ^1H spectrum of **16** in d_6 -DMSO. Inset: The expansion of the aromatic region between 7.0 and 9.5 ppm.

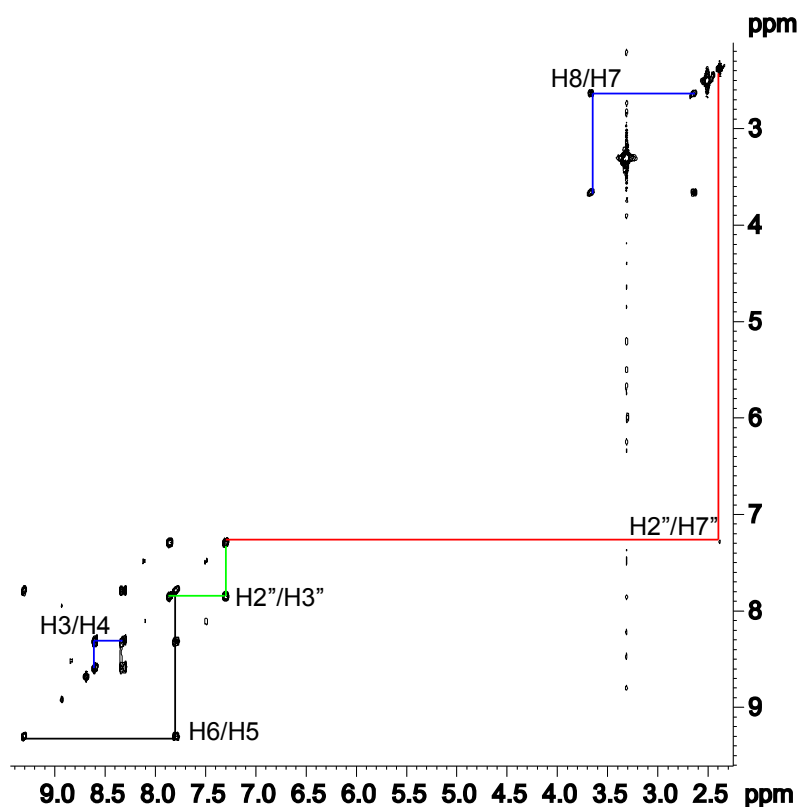


Figure S-67: The COSY spectrum of **16** in d_6 -DMSO with lines of connectivity highlighting cross correlations.

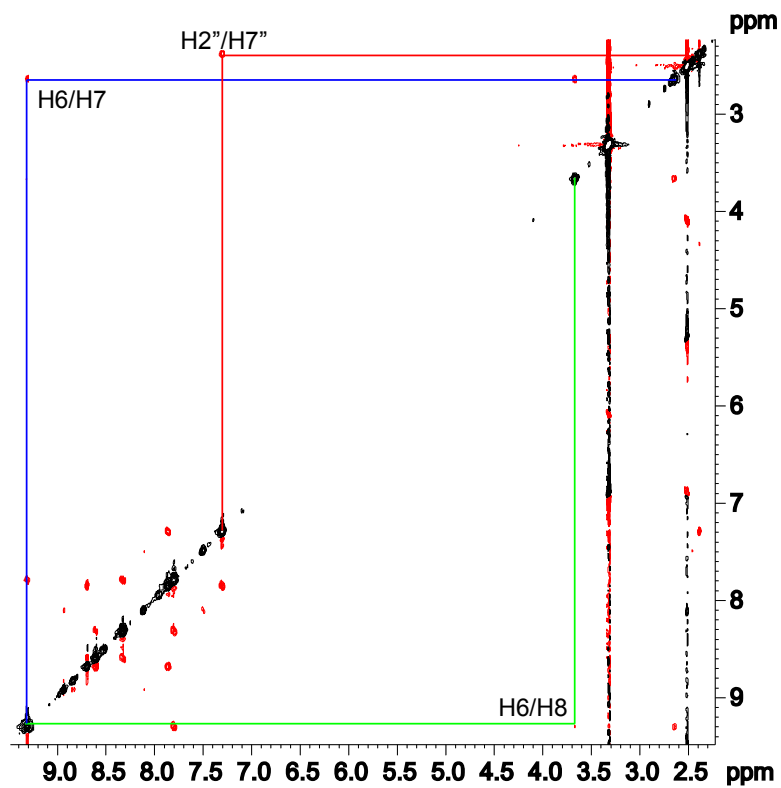


Figure S-68: The ROESY spectrum of **16** in d_6 -DMSO with lines of connectivity highlighting cross correlations.

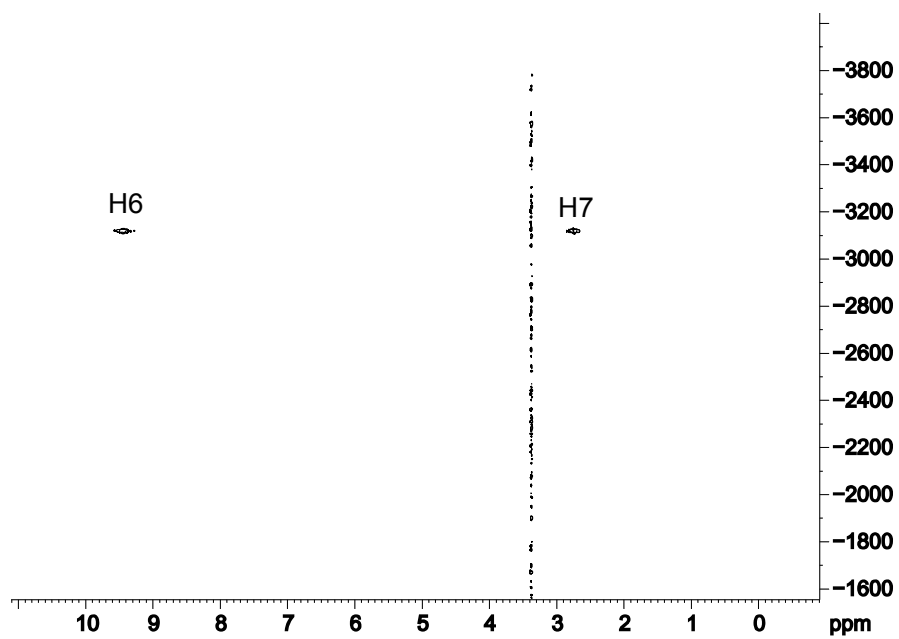


Figure S-69: ^1H - ^{195}Pt HMQC spectrum of **16** in d_6 -DMSO.