

Supporting Information

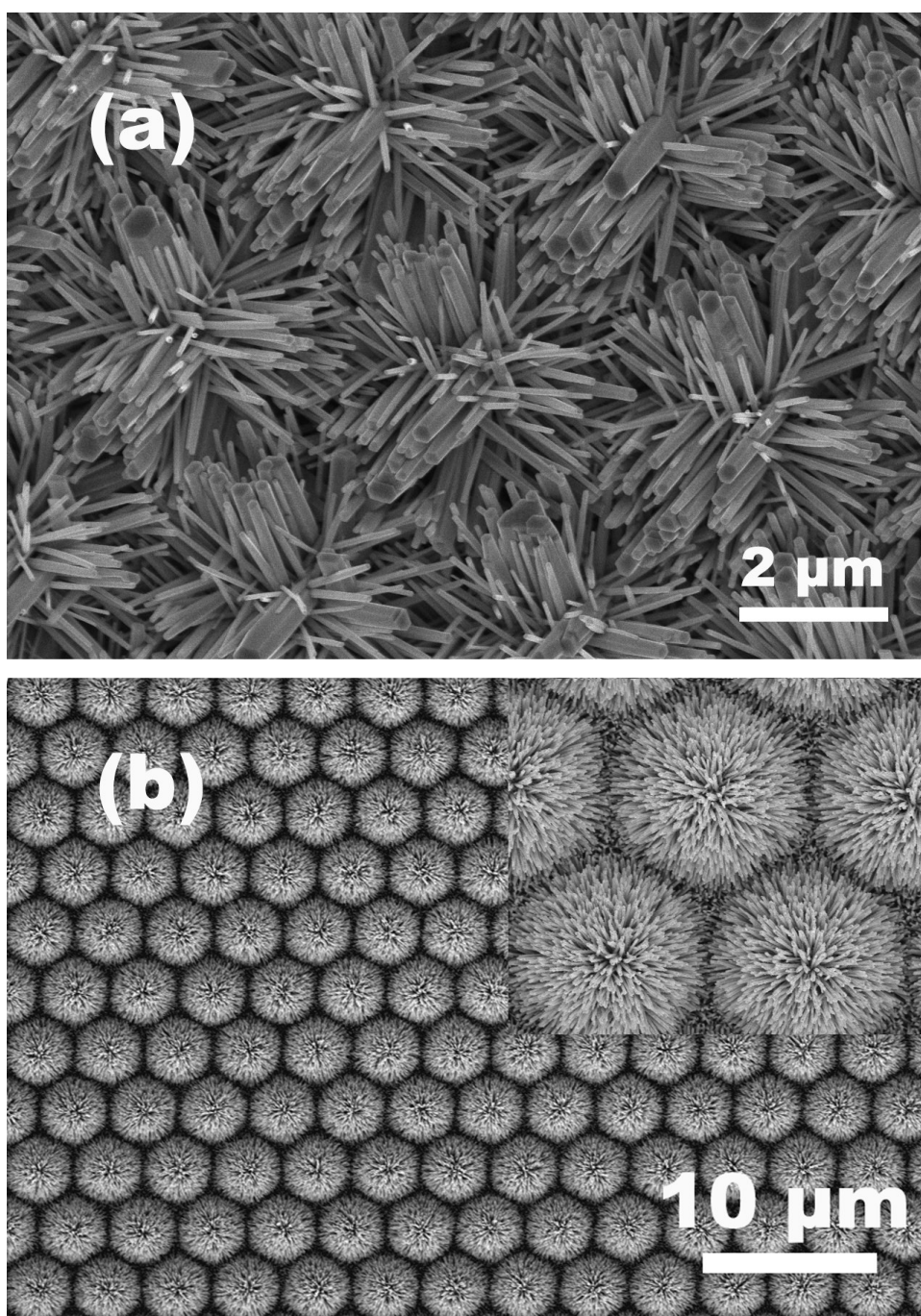


Figure S1 SEM images of ZnO nanoflower arrays, (a) using a ZnO seed layer directly deposited on the patterned sapphire substrate by magnetron sputtering, (b) using a ZnO seed layer deposited by magnetron sputtering after SiO₂ layer was deposited.

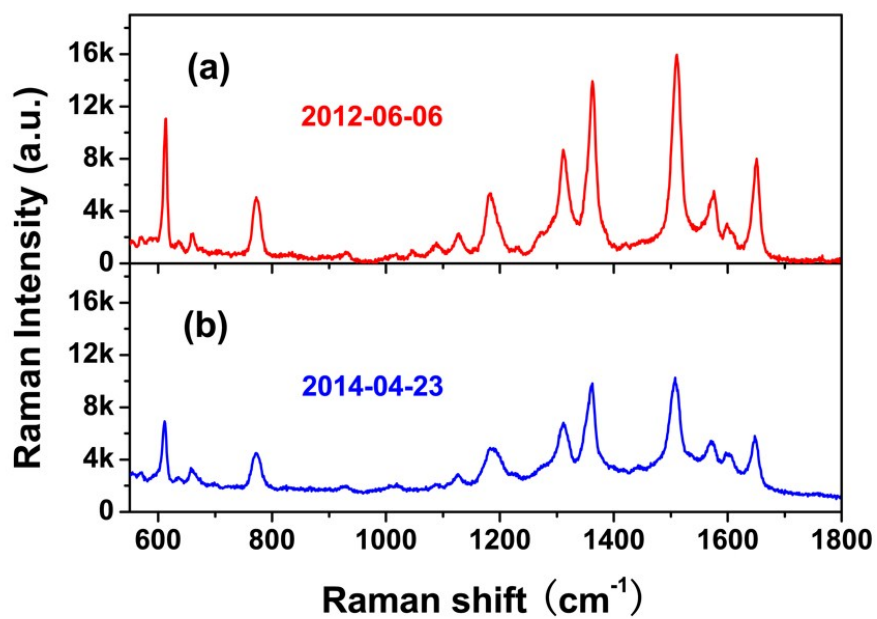


Figure S2 Raman spectra of 10^{-6} M R6G using the SERS substrates (a) as-prepared in 2012-06-16 (b) aged for ~ 2 years in 2014-04-23;