

Supporting Information for

Long-Term, High-Rate Lithium Storage Capabilities of TiO₂ Nanostructured Electrodes Using 3D Self-Supported Indium Tin Oxide Conducting Nanowire Arrays

**Kyung-Soo Park,^a Jin-Gu Kang,^a Young-Jin Choi,^a Sungjun Lee,^b Dong-Wan
Kim^{*c}, and Jae-Gwan Park^{*a}**

^aNano-Materials Center, Korea Institute of Science and Technology, Seoul 136-791, Korea

^bDivision of Physical Metrology, Korea Research Institute of Standards and Science, Daejeon 305-600,
Korea

^cDepartment of Materials Science and Engineering, Ajou University, Suwon 443-749, Korea

[*] To whom correspondence should be addressed. E-mail: dwkim@ajou.ac.kr and jgpark@kist.re.kr

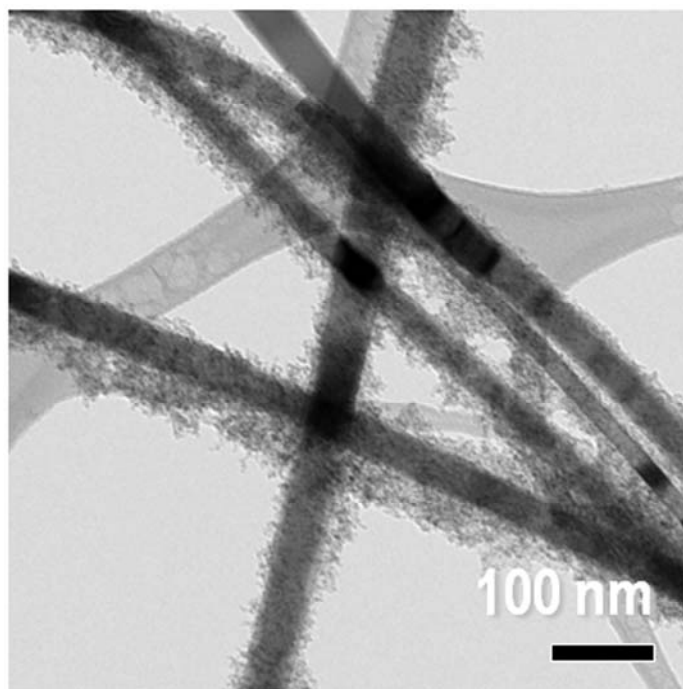


Figure S1. Typical TEM image of ITO/TiO₂ hybrid nanowires.

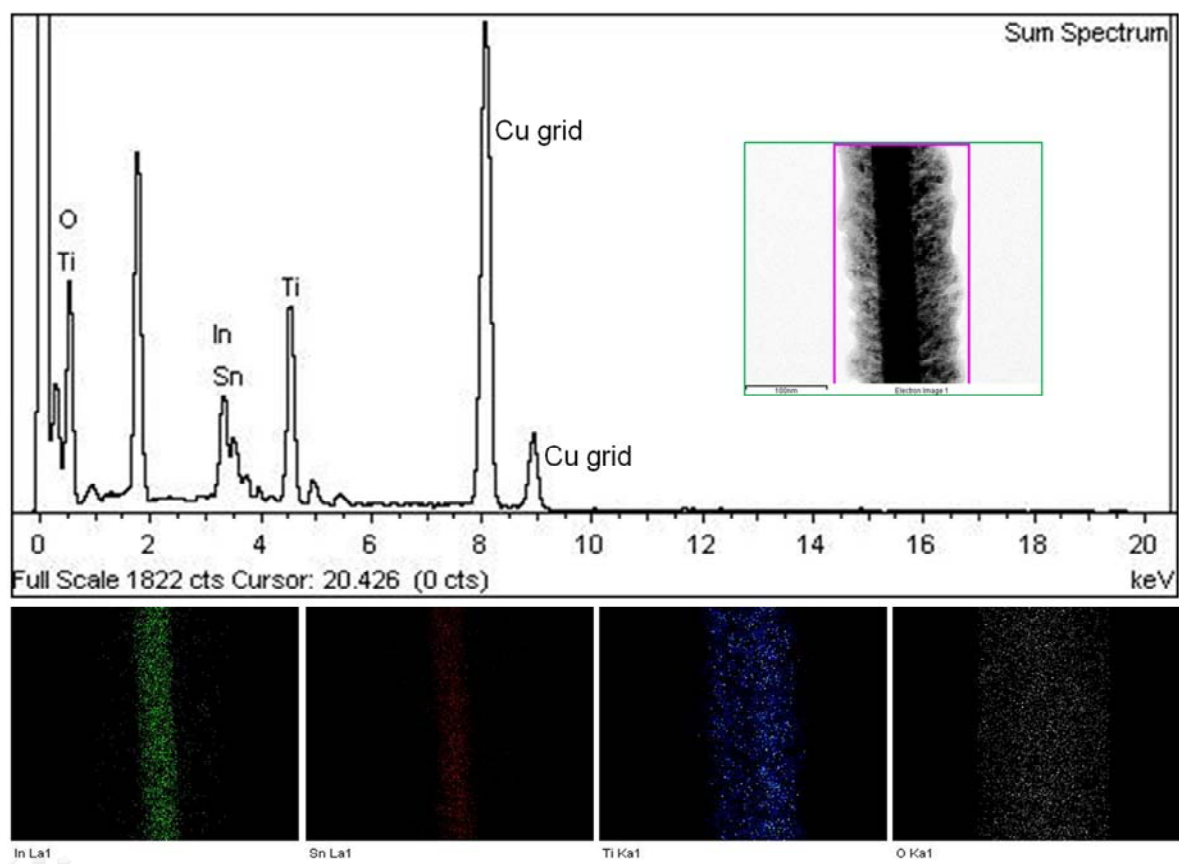


Figure S2. EDS elemental mapping results of an individual ITO/TiO₂ nanowire, marked by a red square region in the inset.

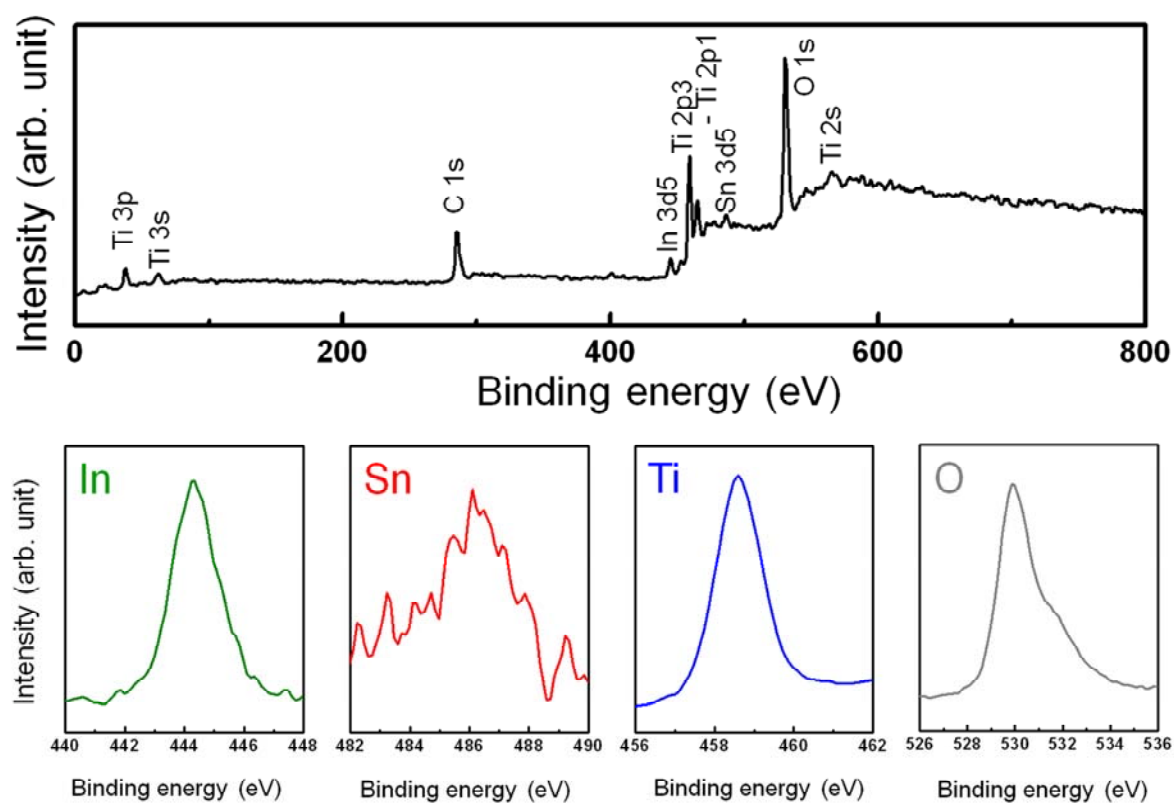


Figure S3. Wide and narrow scan XPS spectra for a bundle of the ITO/TiO₂ hybrid nanowires.

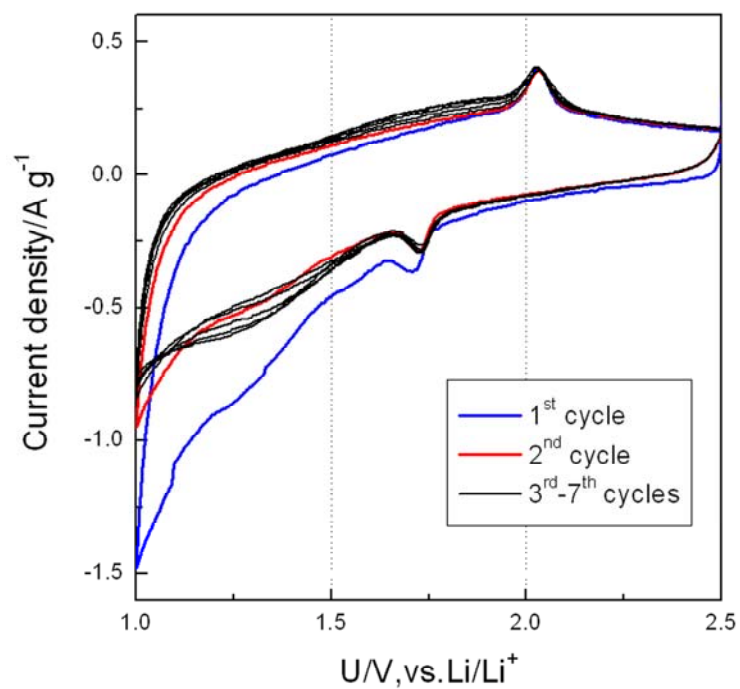


Figure S4. Typical cyclic voltammetry of the ITO/TiO₂ hybrid nanostructured electrode at a scanning rate of 0.2 mV s⁻¹.

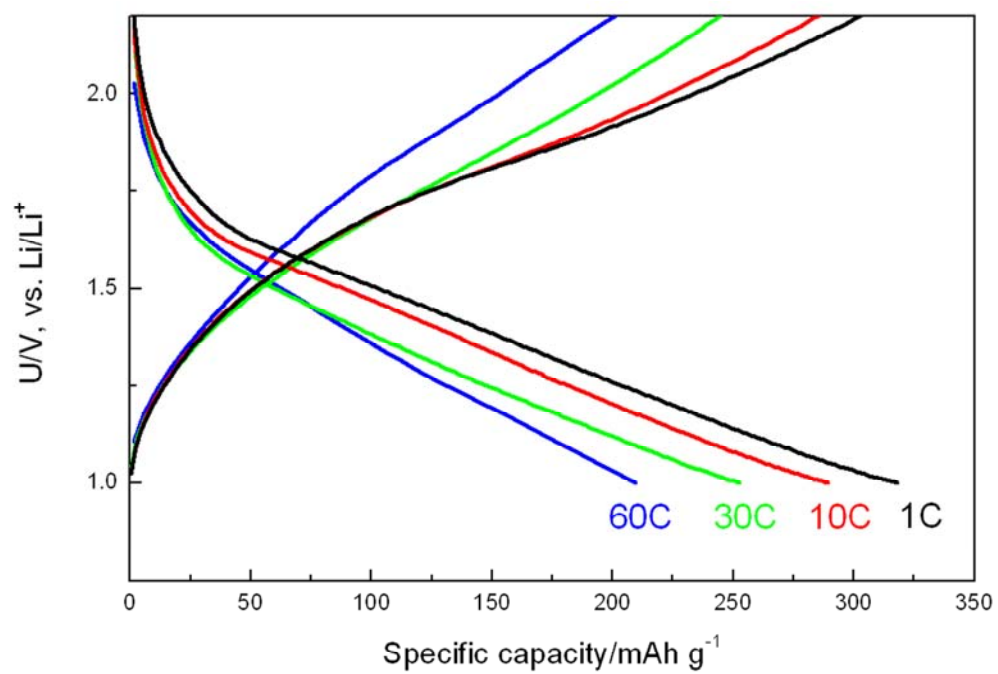


Figure S5. Charging-discharging curves of an ITO/TiO₂ hybrid nanostructured electrode at different C rates.

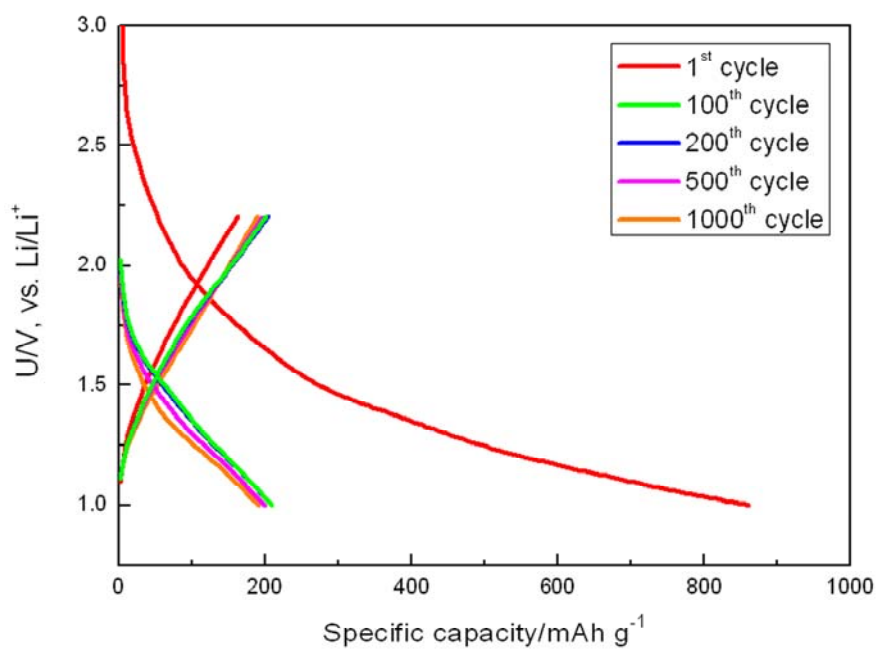


Figure S6. Charging-discharging curves of an ITO/TiO₂ hybrid nanostructured electrode.

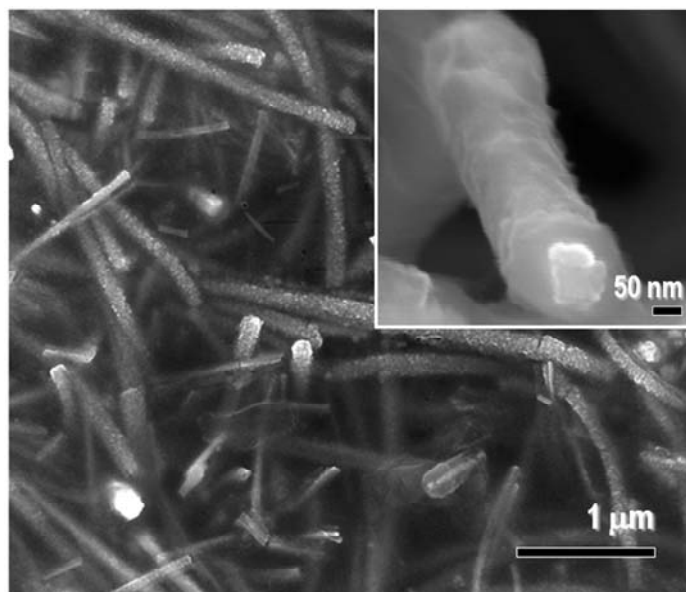


Figure S7. SEM image of a fully lithiated ITO/TiO₂ hybrid nanostructured electrode (taken after 400 cycles). The Inset shows the FE-SEM image of a fully lithiated individual nanowire.