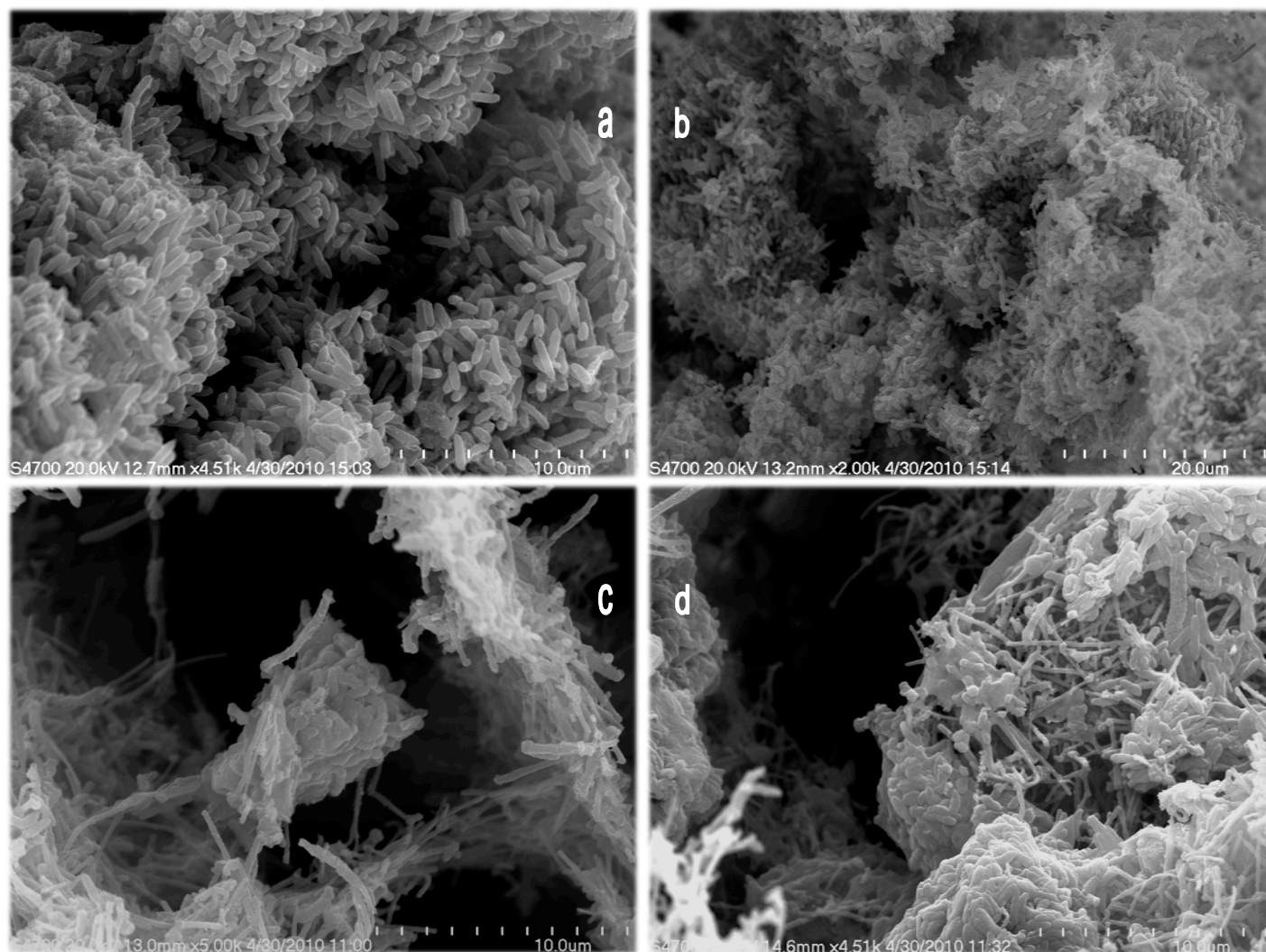


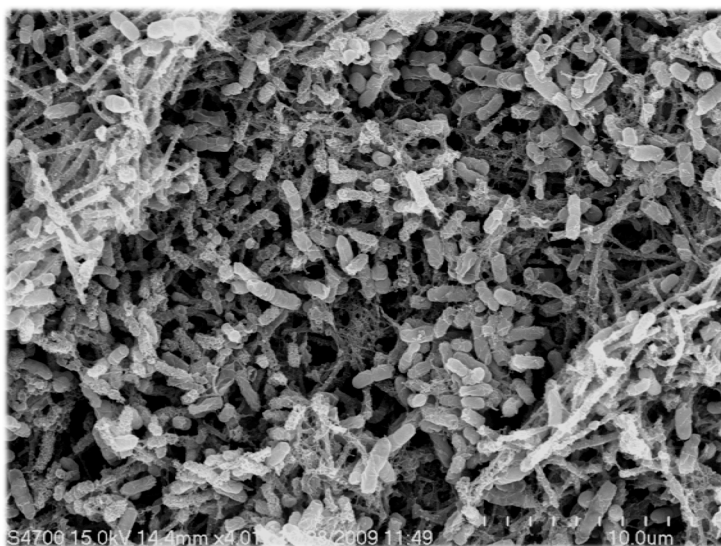
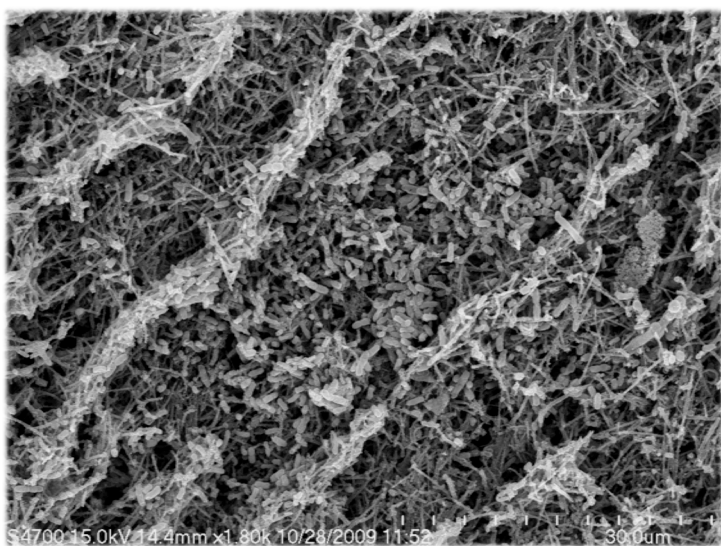
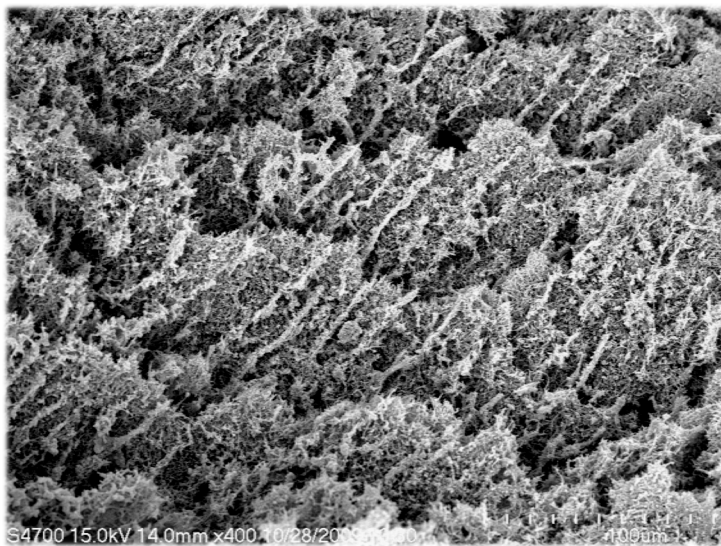
## “Three-Dimensional Microchanelled Electrodes In Flow-Through Configuration For Bioanode Formation And Current Generation.”

Krishna Katuri<sup>b</sup>, M. Luisa Ferrer<sup>\*a</sup>, María C. Gutiérrez<sup>a</sup>, Ricardo Jiménez<sup>a</sup>, Francisco del Monte<sup>a</sup>  
and Dónal Leech<sup>b\*</sup>

### Supplementary Information



**Figure S1:** SEM images of *Gs* biofilms induced to grow for ~100 h in batch mode operation at 0 V vs Ag/AgCl applied potential on (a) graphite rod, (b) MWCNT/CHI coated graphite rod (2D electrode), and (c & d) inside the 3D MWCNT/CHI scaffold channels.



**Figure S2:** SEM images of the longitudinal section of *Gs* biofilm induced to grow in a 3D scaffold, pre-filled with *Gs*, at 0 V vs. Ag/AgCl, operated under flow of culture medium (10 mM acetate) for ~320 hrs.