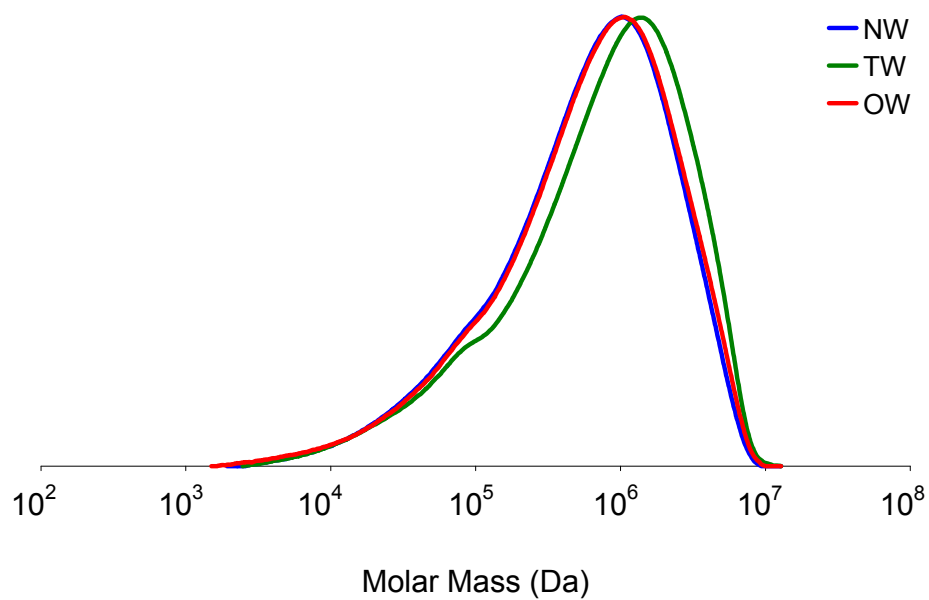


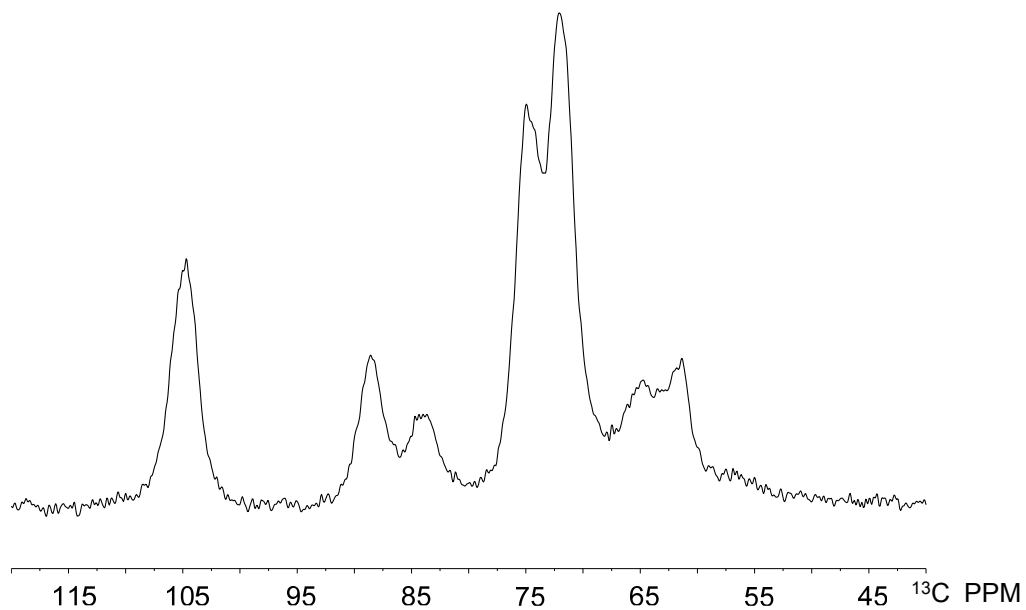
1
2



3
4
5
6
7

Fig. Supplementary 1. GPC chromatographs of NaOH isolated α -cellulose from *Populus tremula x alba* (PTA) samples grown under bending or normal (erect) conditions.

8



9

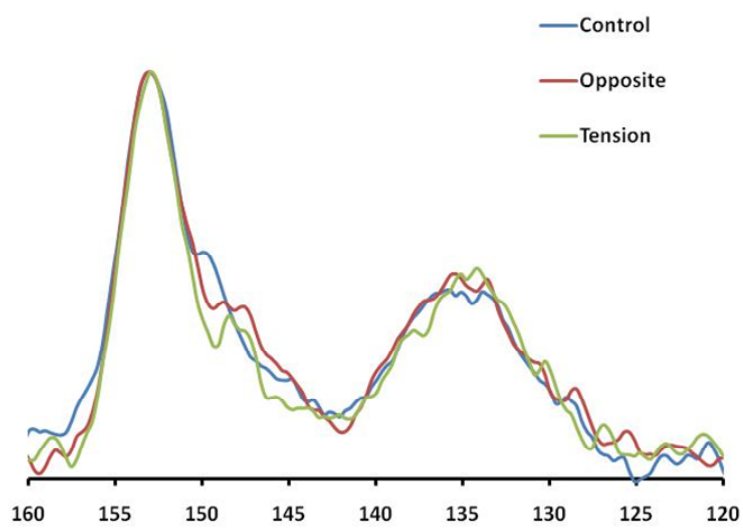
10

11

12

Fig. Supplementary 2. ^{13}C CP/MAS spectra isolated cellulose from *Populus tremula x alba* (PTA) samples grown under bending conditions.

13



14

15 **Fig. Supplementary 3.** ¹³C CP/MAS spectra of *Populus tremula x alba* (PTA) samples
16 grown under bending or normal (erect) conditions in the aromatic carbon region.

17

18

19