

Supporting Figures:

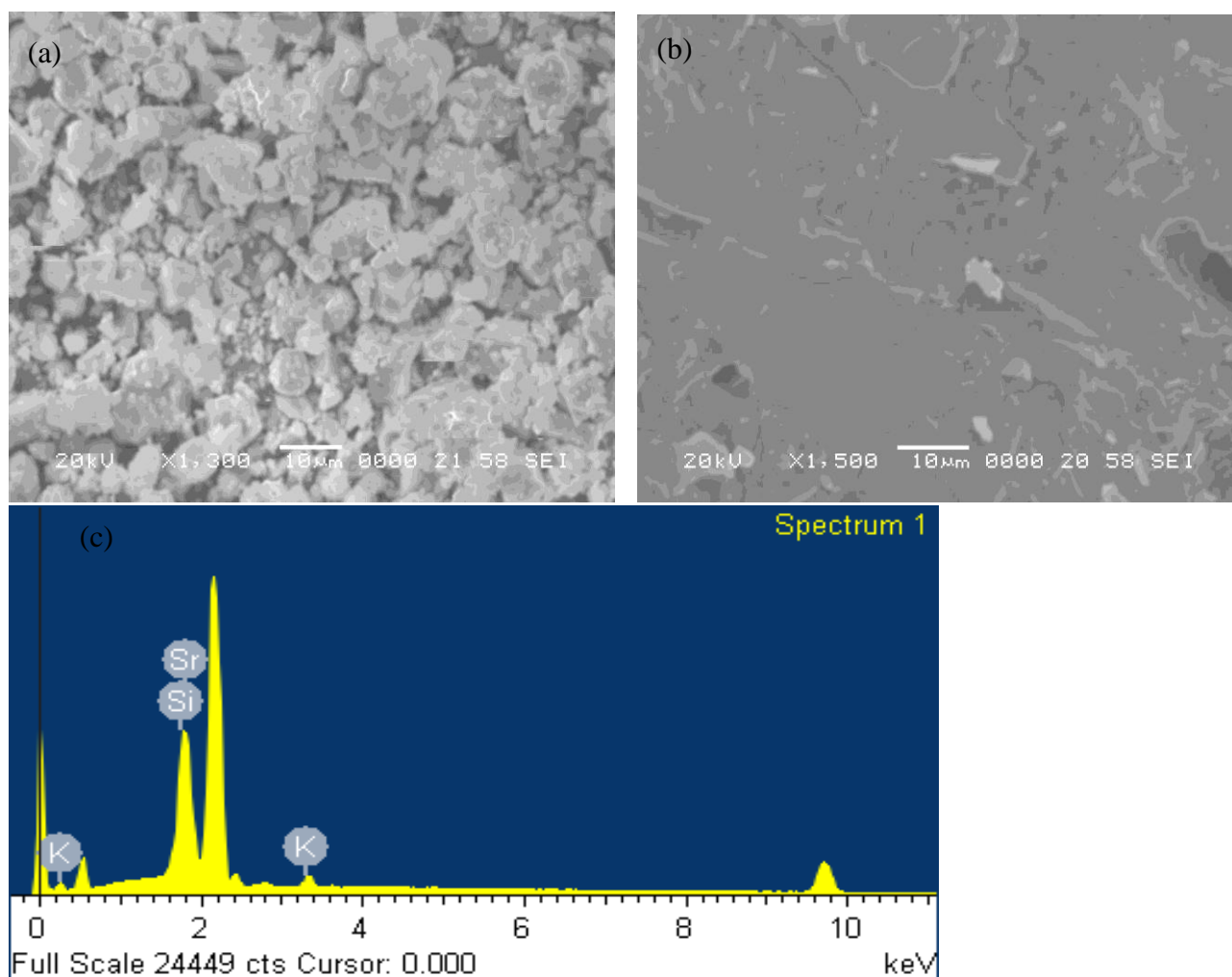


Figure S1. SEM image of  $\text{Sr}_{0.8}\text{K}_{0.2}\text{SiO}_{2.9}$  (a) powder, (b) pellet and (c) EDX image of the pellet.

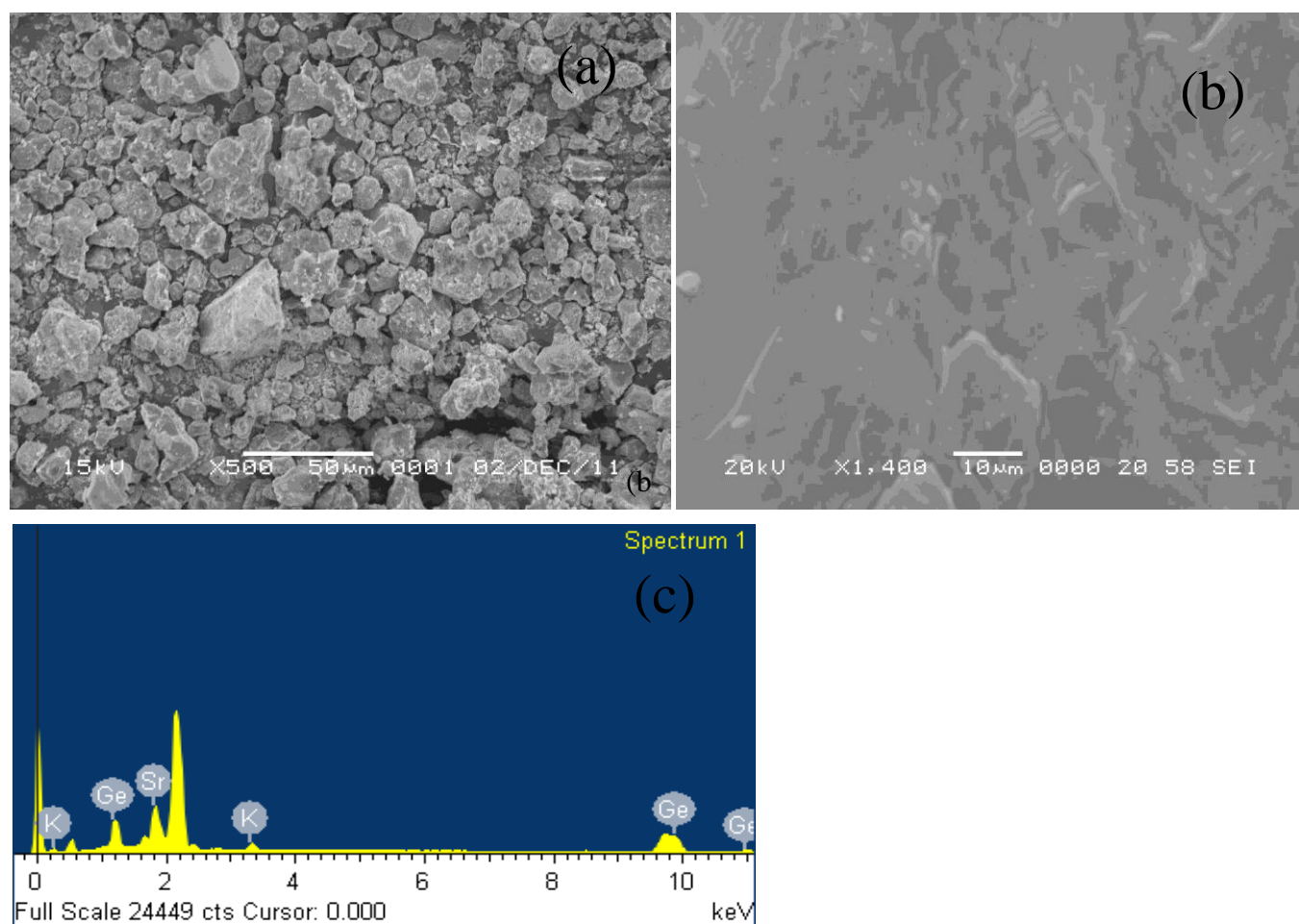


Figure S2. SEM image of  $\text{Sr}_{0.85}\text{K}_{0.15}\text{GeO}_{2.925}$  (a) powder, (b) pellet and (c) EDX image of the pellet.