

SUPPORTING INFORMATION

Li-S batteries: simple approaches for superior performances

Rezan Demir-Cakan,^{a,b} Mathieu Morcrette,^{a,b} Gangulibabu^{a,c}, Aurélie Guéguen^{d,b}, Rémi Dedryvère^{d,b},
and Jean-Marie Tarascon^{*,a,b}

^aLRCS, University of Picardie Jules Verne, 33 Rue Saint-Leu, 80039, Amiens, France

^bALISTORE-ERI, 80039, 33 Rue Saint-Leu, 80039, Amiens, France

^cCSIR- Central Electrochemical Research Institute, Karaikudi, 630 006, India

^dIPREM-ECP (UMR 5254 CNRS), University of Pau, France

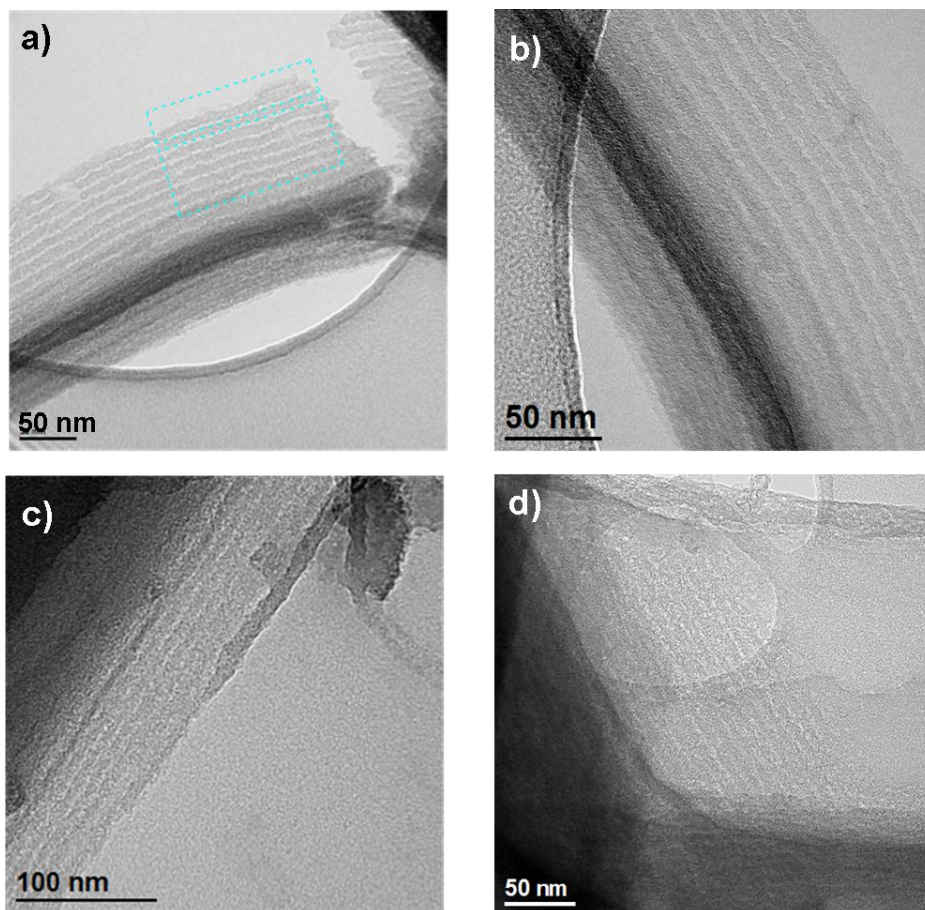


Fig. S1: TEM images of a, b) the pristine C/S composite c,d) the C/S composite after 20th cycle showing that rods are not well defined any longer upon cycling