

## Sorption of Phthalate Acid Esters on Black Carbon from Different Sources

Xinghui Xia<sup>\*</sup>    Zhineng Dai    Ju Zhang

School of Environment, Beijing Normal University /State Key  
Laboratory of Water Environment Simulation, Beijing, 100875, China

This supplementary material has three pages, and there are two figures.

---

<sup>\*</sup> Corresponding author. Tel.: +86 10 58805314; fax: +86 10 58805314.  
E-mail address: [xiakh@bnu.edu.cn](mailto:xiakh@bnu.edu.cn) (X. Xia).

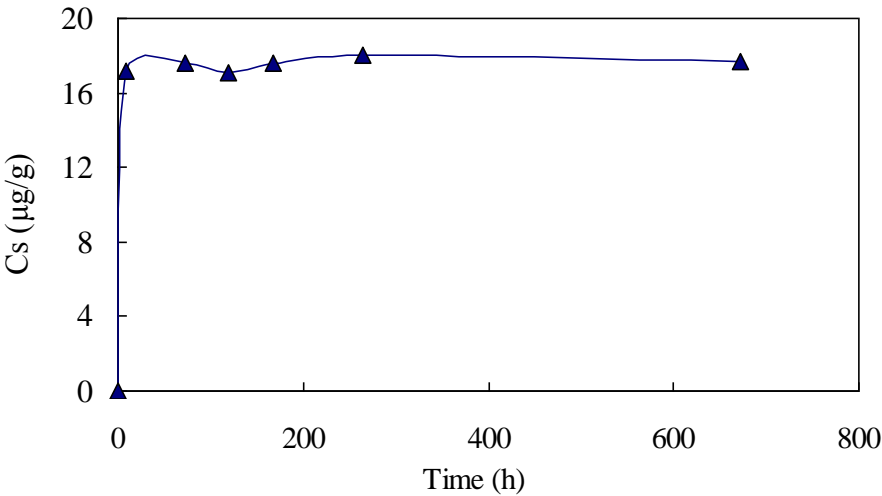
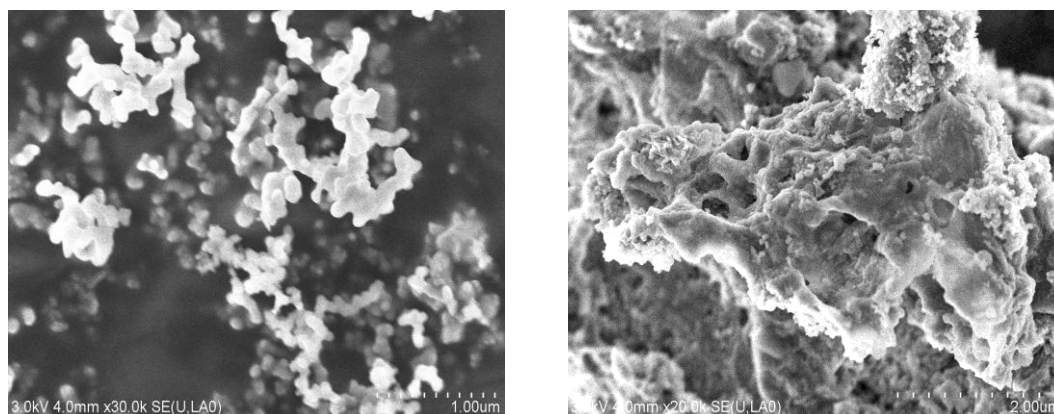
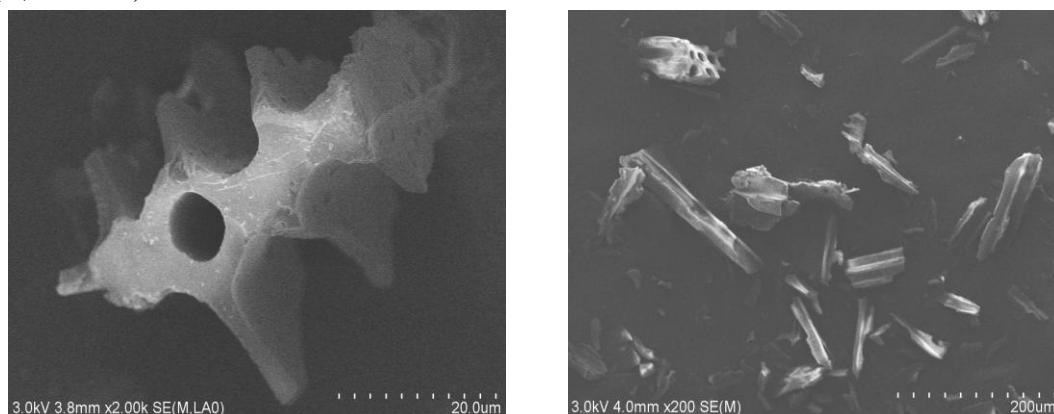


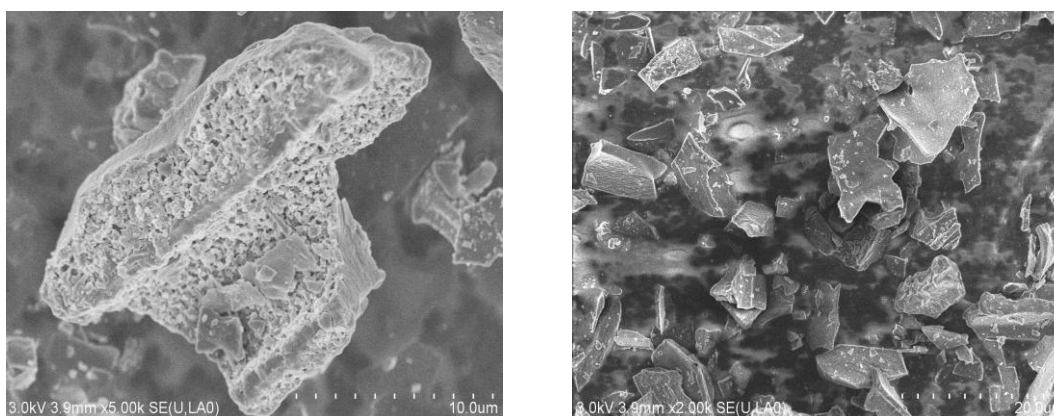
Figure S1 Sorption kinetics curve of DEHP on WHG-BC



(A, Soot-ash)



(B, Char-wood)



(C, Char-stalk)

Figure S2. The physical structure of Soot-ash, Char-wood and Char-stalk under the scanning electron microscope.