

## Supplemental Materials

# Characterization of ambient black carbon and wood burning particles in two urban areas

Yungang Wang<sup>1</sup>, Philip K. Hopke<sup>1,\*</sup>, Oliver V. Rattigan<sup>2</sup>, Yifang Zhu<sup>3</sup>

<sup>1</sup> Center for Air Resource Engineering and Science, Clarkson University, Potsdam, NY 13699-5708, USA

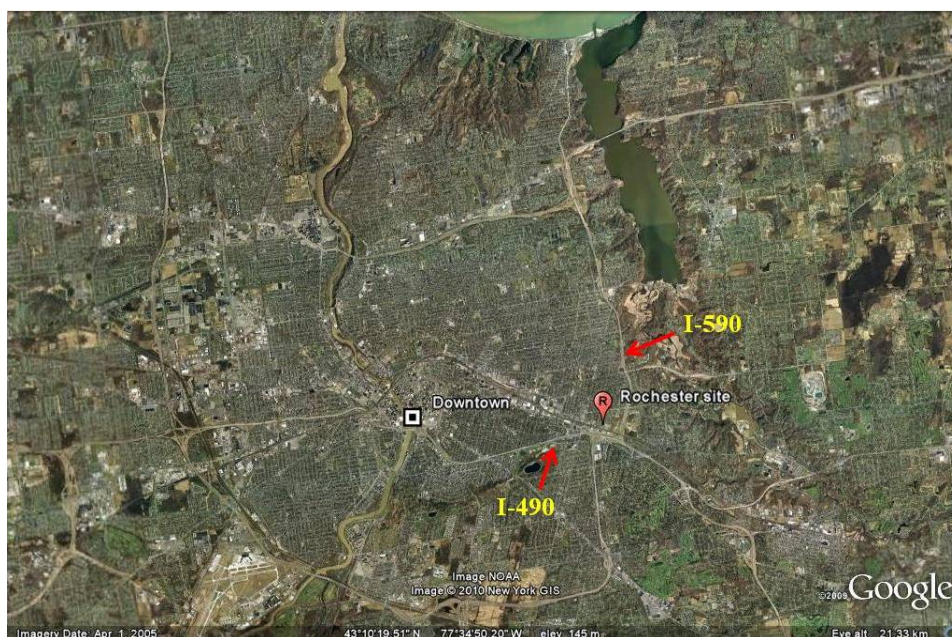
<sup>2</sup> Division of Air Resources, NYS Department of Environmental Conservation, Albany, NY 12233, USA

<sup>3</sup> Department of Environmental Health Sciences, University of California Los Angeles, Los Angeles, CA 90095, USA

\* Corresponding author: Philip K. Hopke

Email: hopkepk@clarkson.edu; Phone: 315-268-3861; Fax: 315-268-4410.

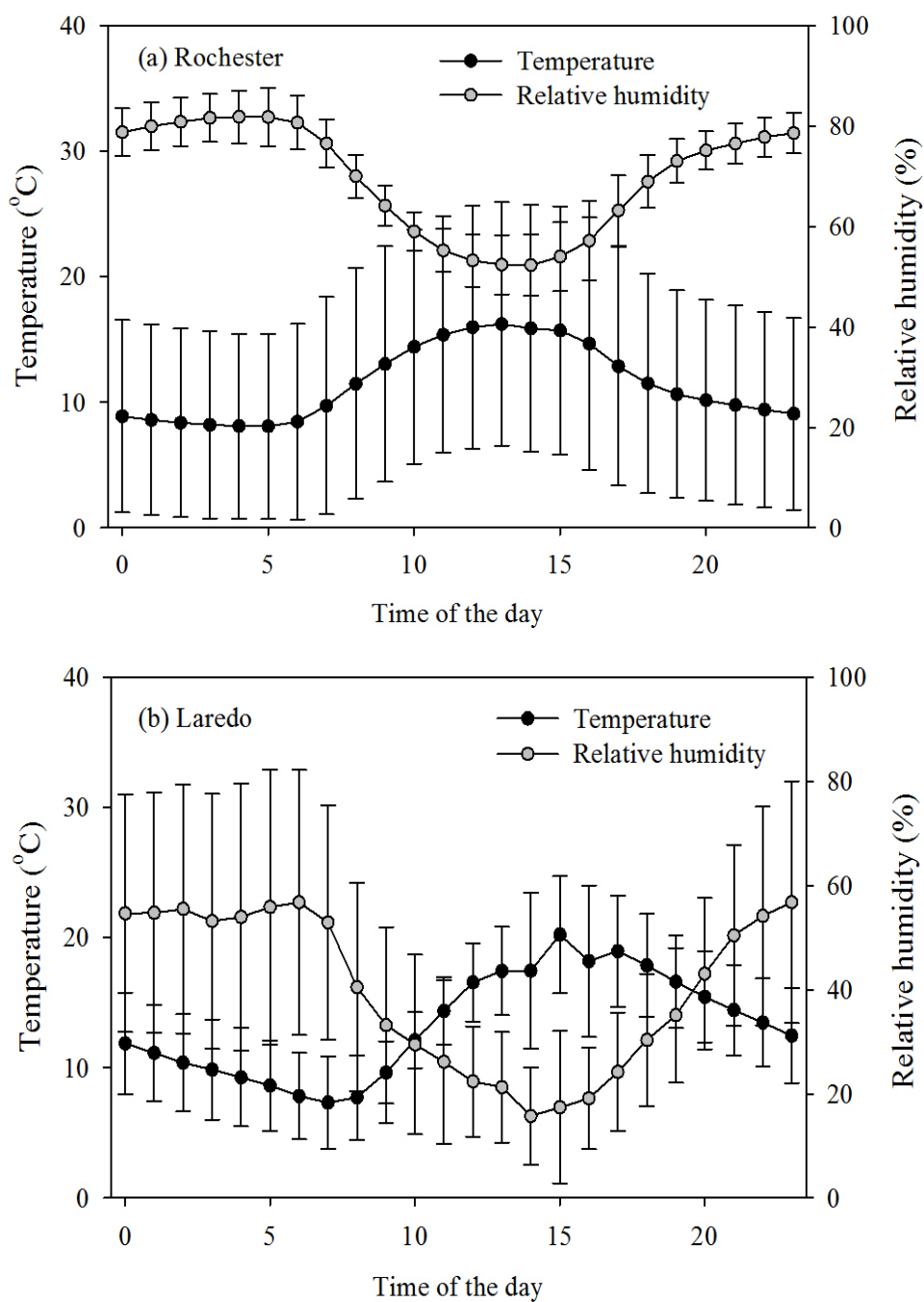
(a) Rochester, NY



(b) Laredo, TX

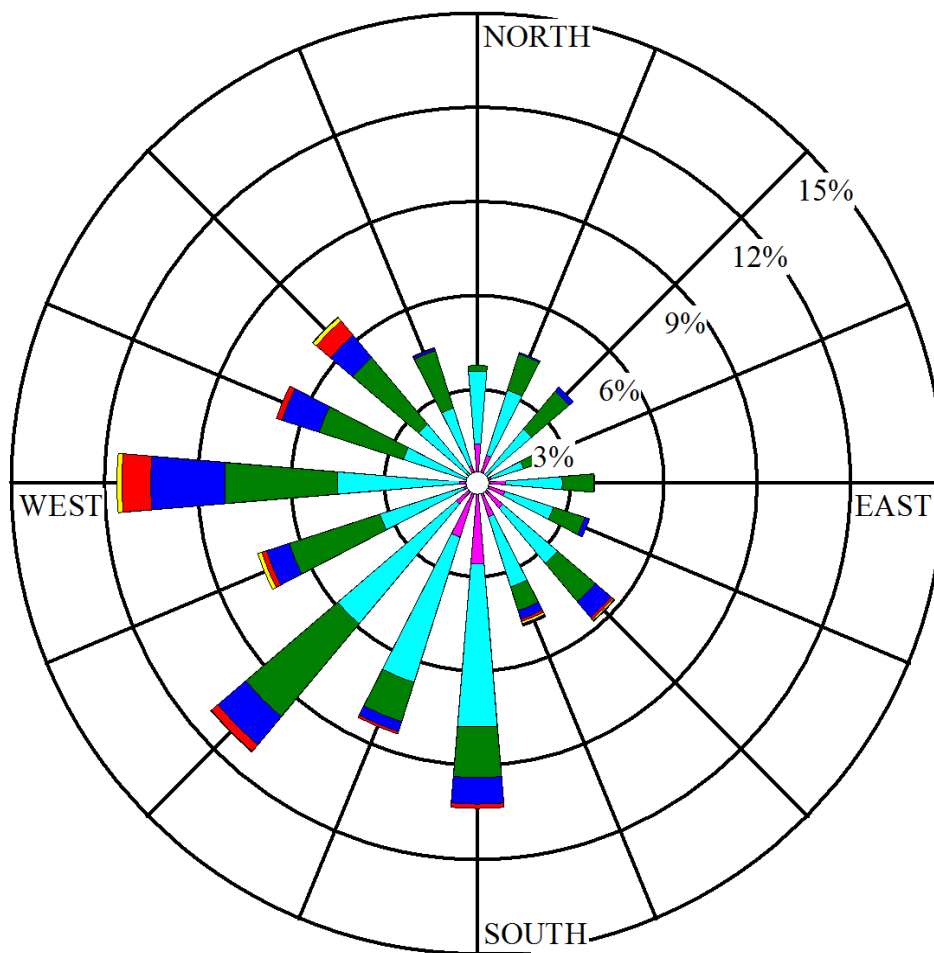


**Fig. S1.** Locations of the sampling sites and major roadways in (a) Rochester, NY and (b) Laredo, TX. The yellow line indicates the U.S.-Mexico border.



**Fig. S2.** Diurnal variations of ambient temperature and relative humidity in (a) Rochester and (b) Laredo during the measurement periods. The bars represent one standard deviation.

(a) Rochester



(b) Laredo

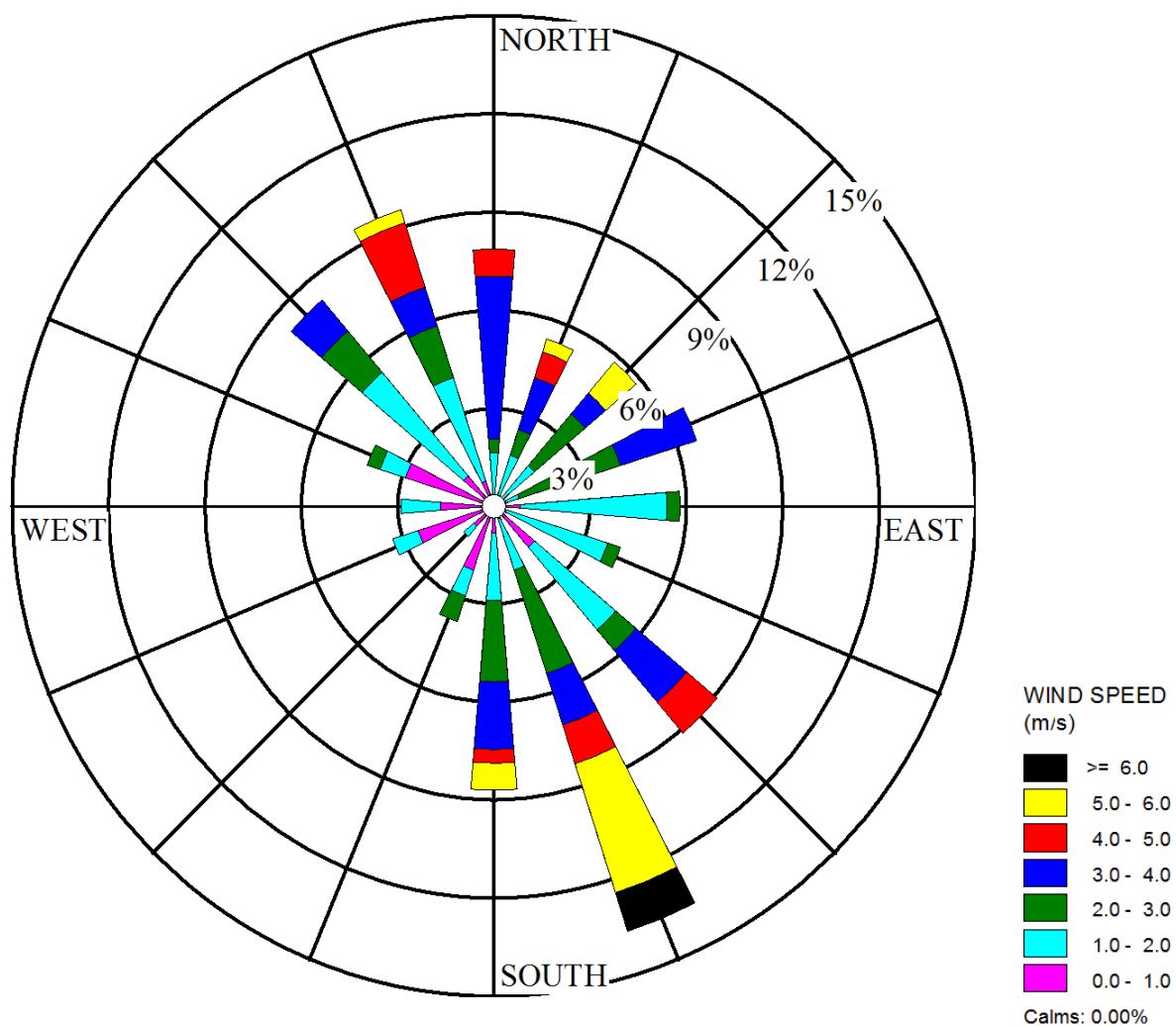


Fig. S3. Wind rose plots for (a) Rochester and (b) Laredo sites.