

Electronic supplementary information

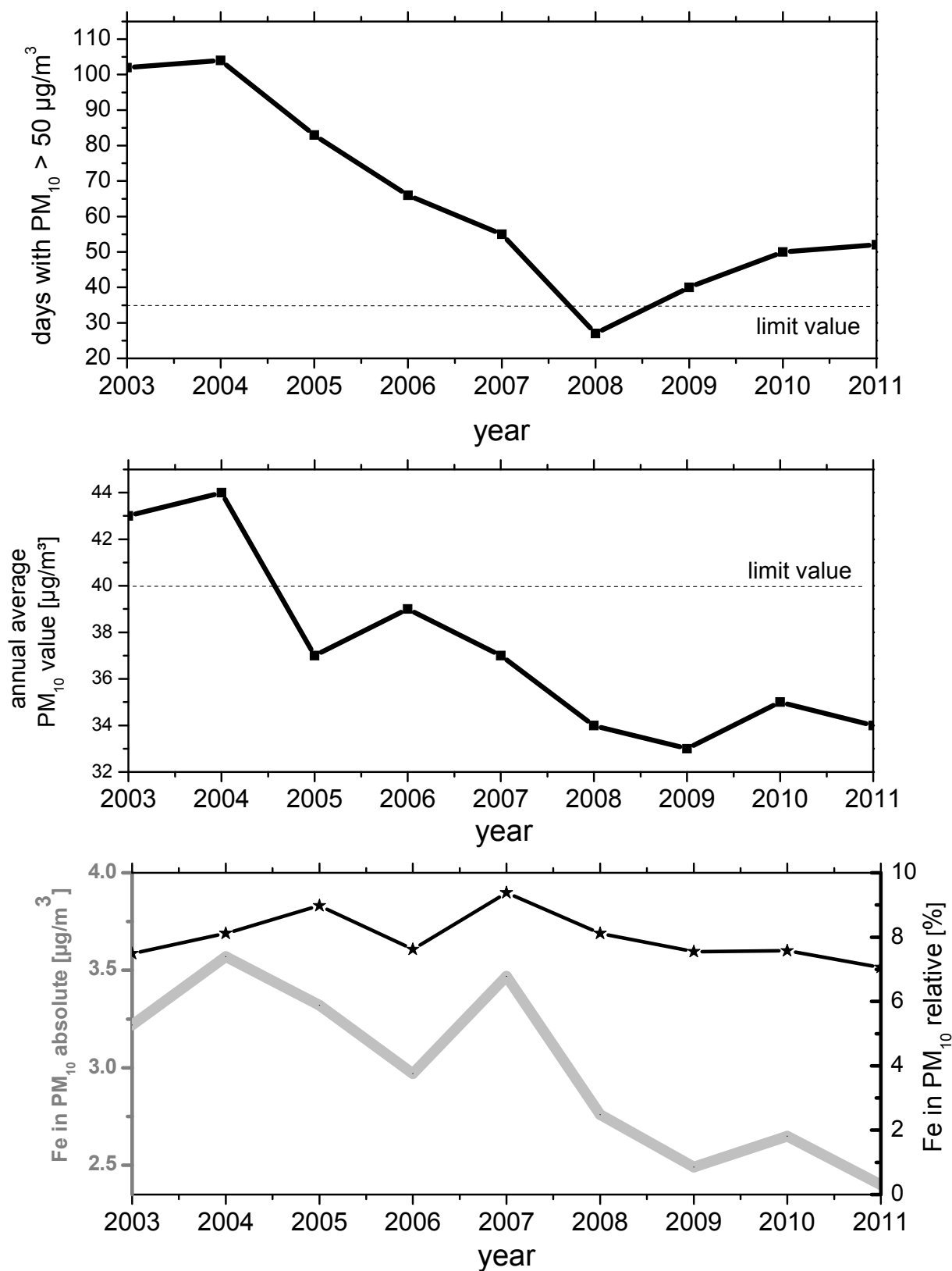


Figure S1: Annual number of PM_{10} exceeding days (top), annual mean values of PM_{10} (middle), and annual absolute and relative iron abundance within PM_{10} (bottom) at the

monitoring station DUM2 in Duisburg-Marxloh (Landesamt für Natur, Umwelt und Verbraucherschutz Nordrhein-Westfalen, Essen, Germany; data available at: http://www.lanuv.nrw.de/luft/immissionen/ber_trend/kenn.htm).