

Fig. S1. XRD patterns of tubercles from pipes T1, T2, T3 and T4. Mineral phase 1 represents goethite (α -FeOOH), 2 represents magnetite (Fe_3O_4), and 3 represents calcite (CaCO_3).

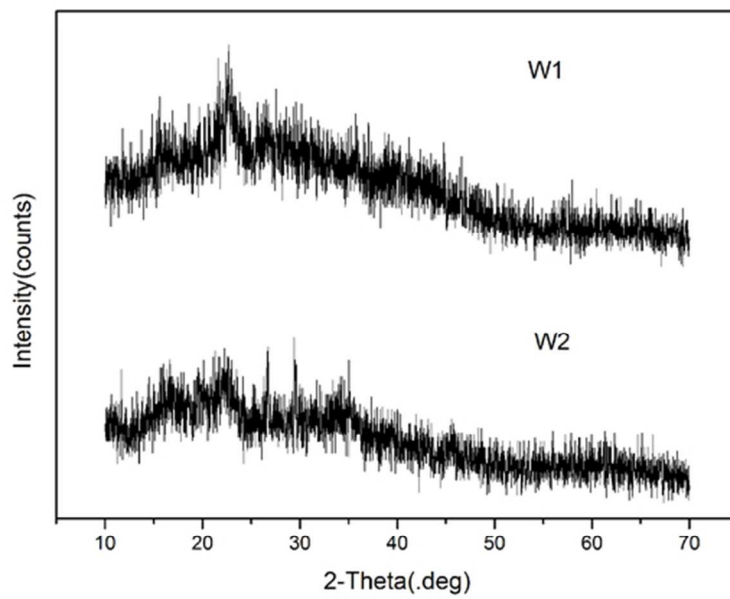


Fig. S2 XRD patterns of particulates from stagnant tap-water samples.

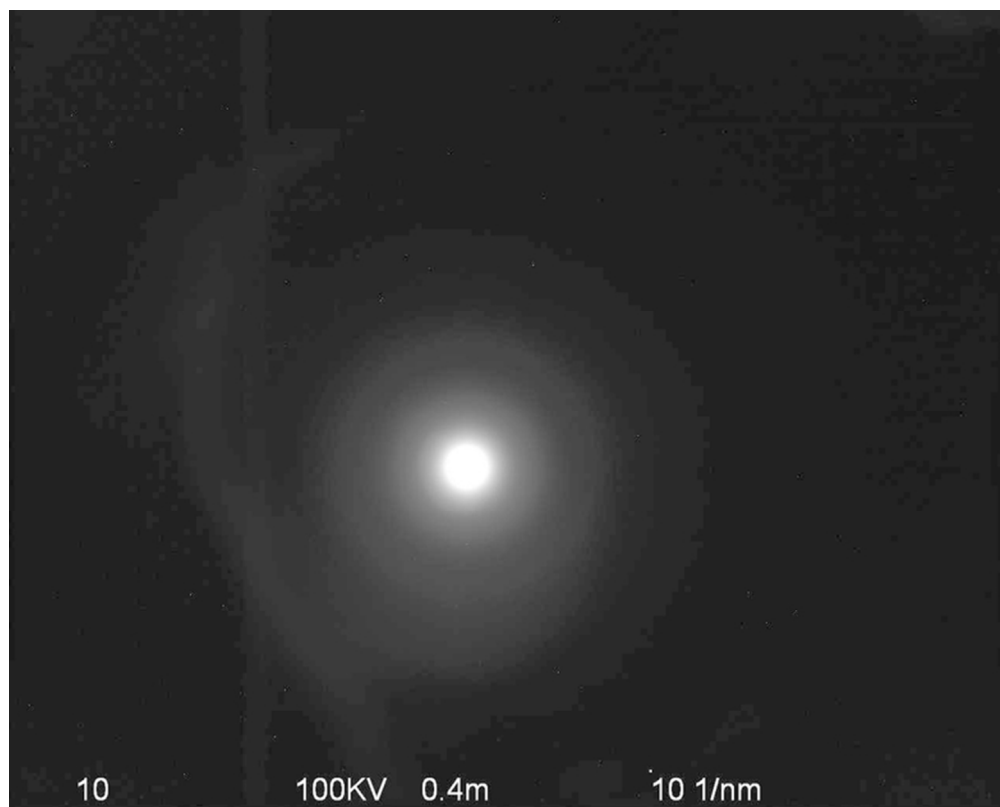


Fig. S3 SAED pattern of particulates from stagnant tap water sample W1.