

Supporting Information

S-Table 1 Regular water quality parameters

S-Figure 1 Map of sampling locations of drinking water in China

S-Figure 2 Molecular weight distributions by high performance size-exclusion chromatography (HPSEC). (A-a) Yellow river in northwest of China, (A-b) Yellow river in north of China; (B-a) Pearl river in southwest of China, (B-b) Pearl river in south of China; (C-a) Yangtze river in southwest of China, (C-b) Yangtze river in central China and (C-c) Yangtze river in east of China; (D-a) Coastal areas in South China, (D-b) Coastal areas in east of China and (D-c) Coastal areas in north of China

S-Figure 3 Illustration of peak fitting a HPSEC AMW distribution profile

S-Figure 4 Correlation of FA with DOC in source water

S-Figure 5 Correlation of UV_{254} with different Mw fractions: (a) source water and (b) treated water

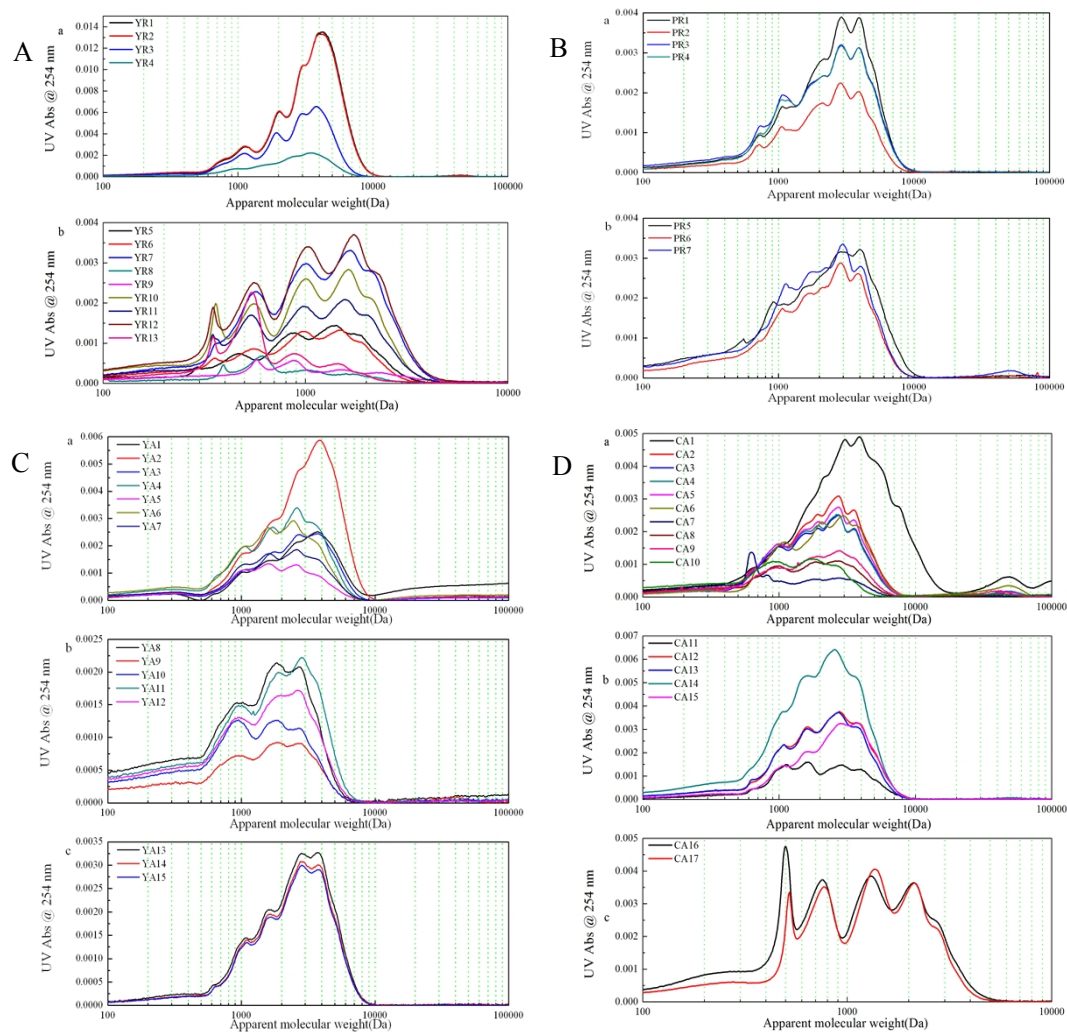
S-Table 1 Regular water quality parameters

sample	turbidity (NUT)	pH	Water source	type of sedimentation tank	coagulant
YR1	115	7.98	water supply reservoirs	horizontal flow	PAFC
YR2	131	8.03	water supply reservoirs	horizontal flow	PAFC+PPF
YR3	308	8.10	river	horizontal flow	HCA,PAC,PAF C
YR4	0.780	7.78	Underground water	horizontal flow	PAC
YR5	1.950	7.54	Underground water	horizontal flow	PAC
YR6	8.380	7.45	Underground water	horizontal flow	PAC
YR7	2.910	8.05	River	horizontal flow	PAC
YR8	1.060	7.84	Underground water	horizontal flow	PAC
YR9	0.607	7.78	Underground water	horizontal flow	PAC
YR10	1.550	8.17	Surface water	inclined-plate	PAC
YR11	2.560	8.12	Surface water	horizontal flow	PAC
YR12	2.450	8.20	Surface water	horizontal flow	PAFC
YR13	1.030	7.47	Underground water	horizontal flow	PAC
YA1	31.90	7.93	Surface water	horizontal flow	PAC
YA2	935.0	7.97	River	horizontal flow	PAC
YA3	629.0	8.07	river	inclined-tube	PAC
YA4	3.690	7.88	water supply reservoirs	horizontal flow	PAC
YA5	0.597	8.05	Underground water	inclined-tube	PAC
YA6	6.830	7.92	water supply reservoirs	horizontal flow	PAC
YA7	1.740	8.09	water supply reservoirs	inclined-tube	PAC
YA8	5.280	7.63	water supply reservoirs	inclined-plate	PAC
YA9	3.080	7.35	water supply reservoirs	horizontal flow	PAC
YA10	34.10	7.68	River	horizontal flow	PAC
YA11	37.00	8.07	River	horizontal flow	PAFC
YA12	214.0	7.91	river	horizontal flow	PAC
YA13	60.30	8.23	River	horizontal flow	PAC
YA14	148.0	7.84	River	horizontal flow	PAC
YA15	47.60	7.88	river	horizontal flow	PAC
PR1	5.09	7.79	water supply reservoirs	horizontal flow	PAFC
PR2	2.76	8.01	water supply reservoirs	Flotation	PAC
PR3	92	7.61	Surface water	horizontal flow	PAC
PR4	113	7.88	Surface water	horizontal flow	PAC
PR5	10.5	7.47	Surface water	horizontal flow	PAC
PR6	10.8	7.48	Surface water	horizontal flow	PAC
PR7	35.3	6.90	Surface water	horizontal flow	PAC
CA1	55.8	7.00	Surface water	horizontal flow	PAC
CA2	7.29	6.80	Surface water	Flotation	PAC
CA3	12.7	6.71	Surface water	horizontal flow	PAC
CA4	11.3	6.39	Surface water	horizontal flow	PAC
CA5	16.3	6.63	Surface water	horizontal flow	PAC

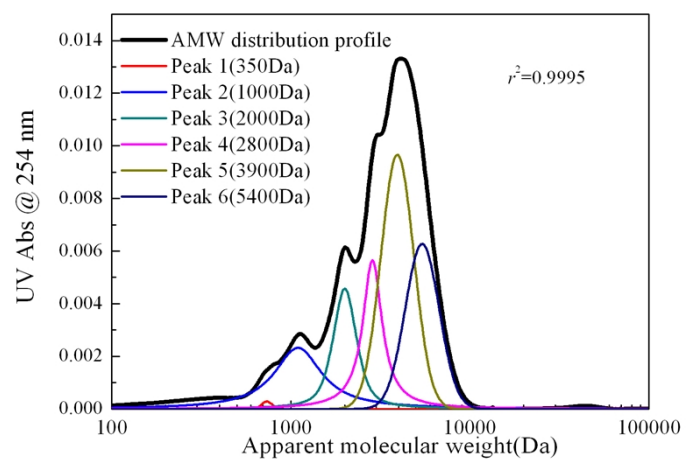
CA6	12.5	6.59	Surface water	horizontal flow	PAC
CA7	1.970	7.82	Surface water	horizontal flow	PAFC
CA8	7.160	7.22	Surface water	horizontal flow	PAFC
CA9	11.10	7.12	water supply reservoirs	horizontal flow	PAC
CA10	49.20	7.02	Surface water	horizontal flow	PAC
CA11	1.970	7.31	water supply reservoirs	horizontal flow	PAC
CA12	20.80	7.62	river	horizontal flow	PAC
CA13	33.20	7.86	river	horizontal flow	PAC
CA14	55.20	7.82	River	horizontal flow	PAC
CA15	3.690	8.00	Surface water	horizontal flow	PAC
CA16	3.230	8.02	Surface water	horizontal flow	PAC
CA17	9.870	7.92	Surface water	horizontal flow	PAC



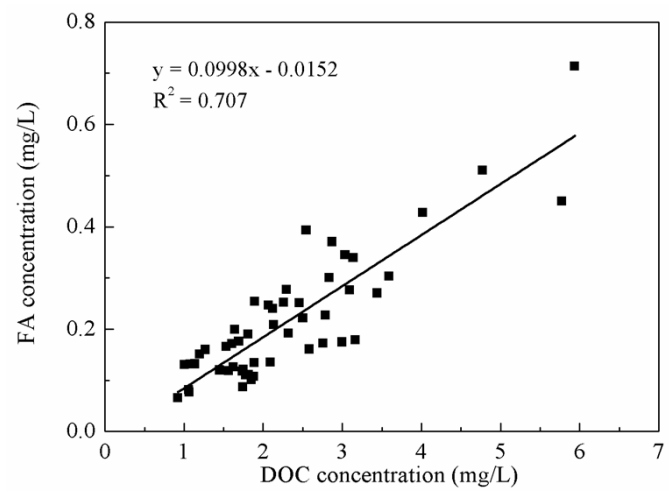
S-Figure 1 Map of sampling locations of drinking water in China



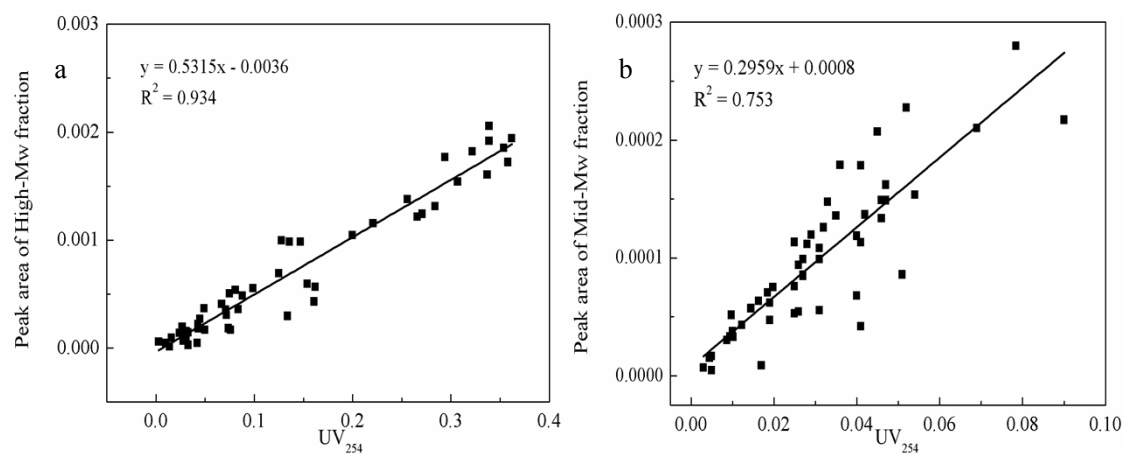
S-Figure 2 Molecular weight distributions by high performance size-exclusion chromatography (HPSEC). (A-a) Yellow river in northwest of China, (A-b) Yellow river in north of China; (B-a) Pearl river in southwest of China, (B-b) Pearl river in south of China; (C-a) Yangtze river in southwest of China, (C-b) Yangtze river in central China and (C-c) Yangtze river in east of China; (D-a) Coastal areas in South China, (D-b) Coastal areas in east of China and (D-c) Coastal areas in north of China



S-Figure 3 Illustration of peak fitting a HPSEC AMW distribution profile.



S-Figure 4 Correlation of FA with DOC in source water



S-Figure 5 Correlation of UV₂₅₄ with different Mw fractions: (a) source water and (b) treated water