

## Supplementary Information for

### Molecular signature of organic nitrogen in septic-impacted groundwater

William A. Arnold<sup>†,‡,\*</sup>, Krista Longnecker<sup>§</sup>, Kevin D. Kroeger<sup>||</sup>, Elizabeth B. Kujawinski<sup>§</sup>

<sup>†</sup>Department of Civil, Environmental, and Geo- Engineering, University of Minnesota, 500 Pillsbury Dr. SE, Minneapolis, MN 55455, USA

<sup>‡</sup>Institute on the Environment, University of Minnesota, 1954 Buford Avenue, Saint Paul, MN 55108, USA

<sup>§</sup>Department of Marine Chemistry and Geochemistry, Woods Hole Oceanographic Institution, 360 Woods Hole Rd., Woods Hole, MA 02543, USA

<sup>||</sup>U.S. Geological Survey Woods Hole Coastal & Marine Science Center, 384 Woods Hole Road, Woods Hole, MA 02543 USA

\*Author to whom correspondence should be addressed.

Phone: 612-625-8582; Fax: 612-626-7750; email: arnol032@umn.edu

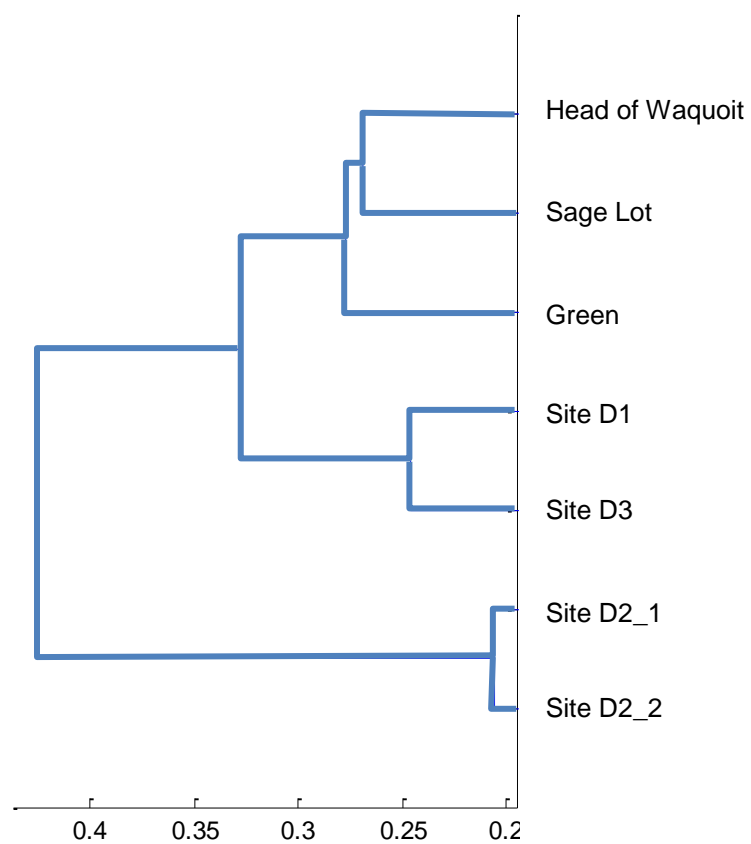
*Environmental Science: Processes & Impacts*

*Dendrogram from Cluster Analysis (Figure S1)*

p. S2

*Van Krevelen diagrams (Figures S2-S7)*

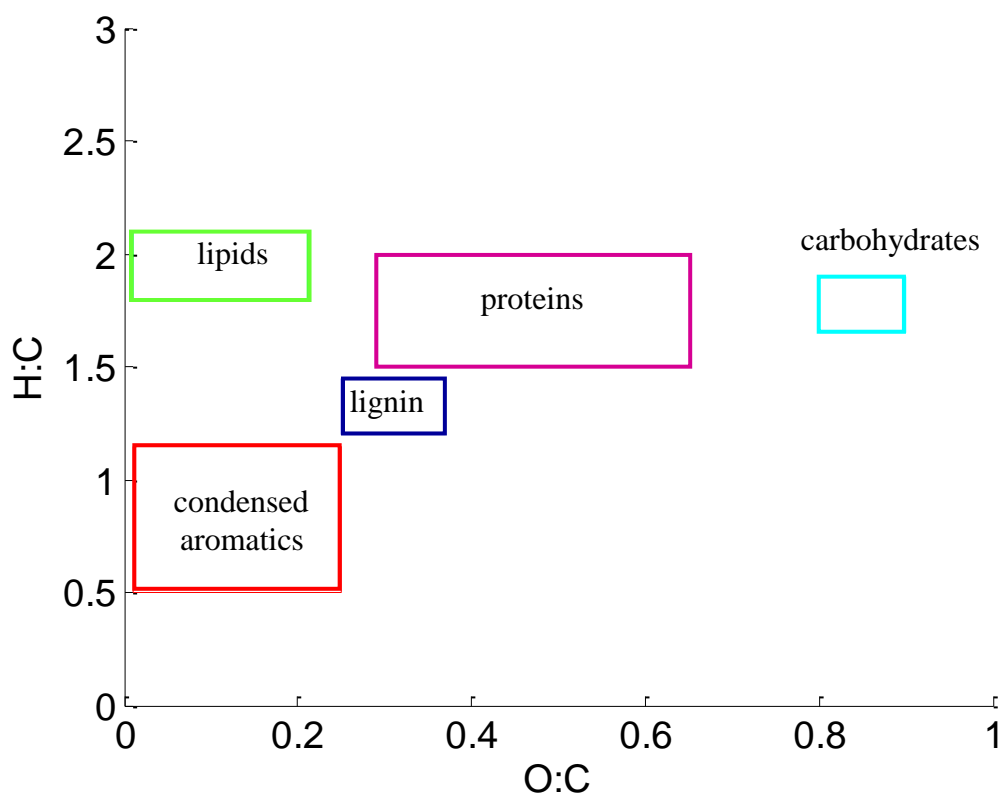
p. S3

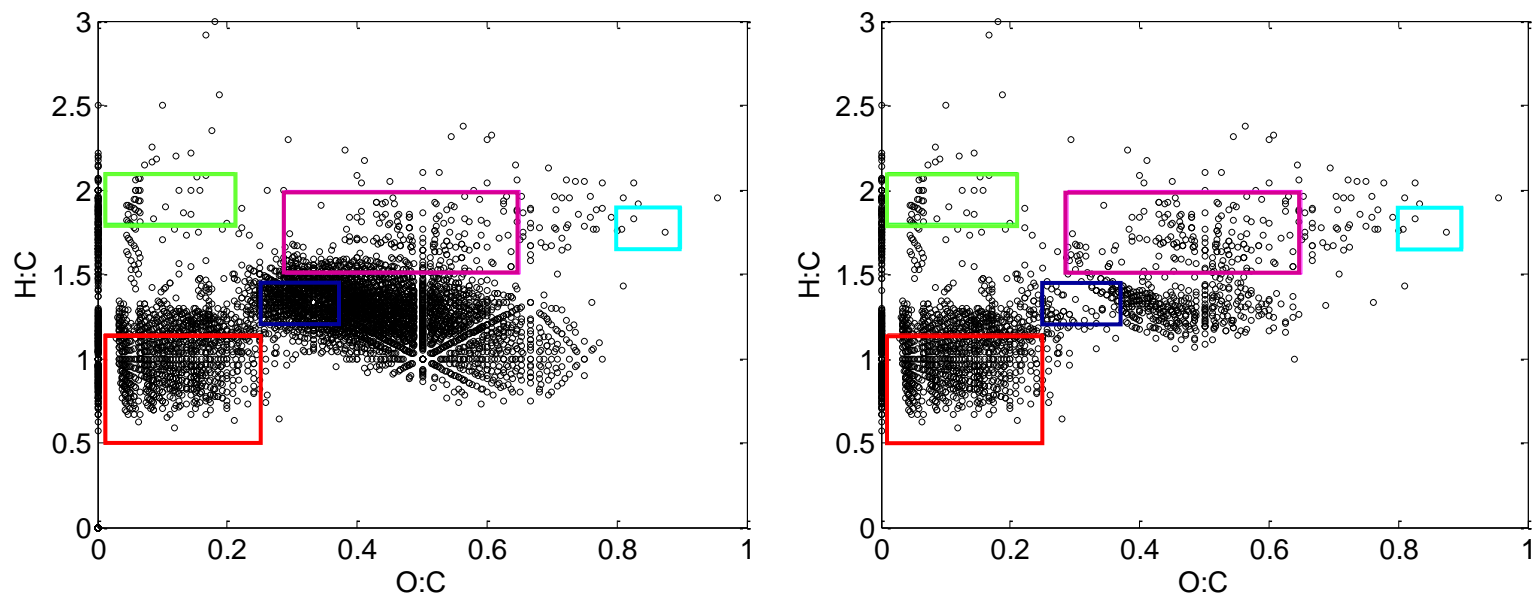


**Figure S1.** Dendrogram derived from cluster analysis determined from the FTICR-MS data from the six samples. The sample for Site D2 was analyzed twice, and the close association of the replicates indicates limited instrument variability.

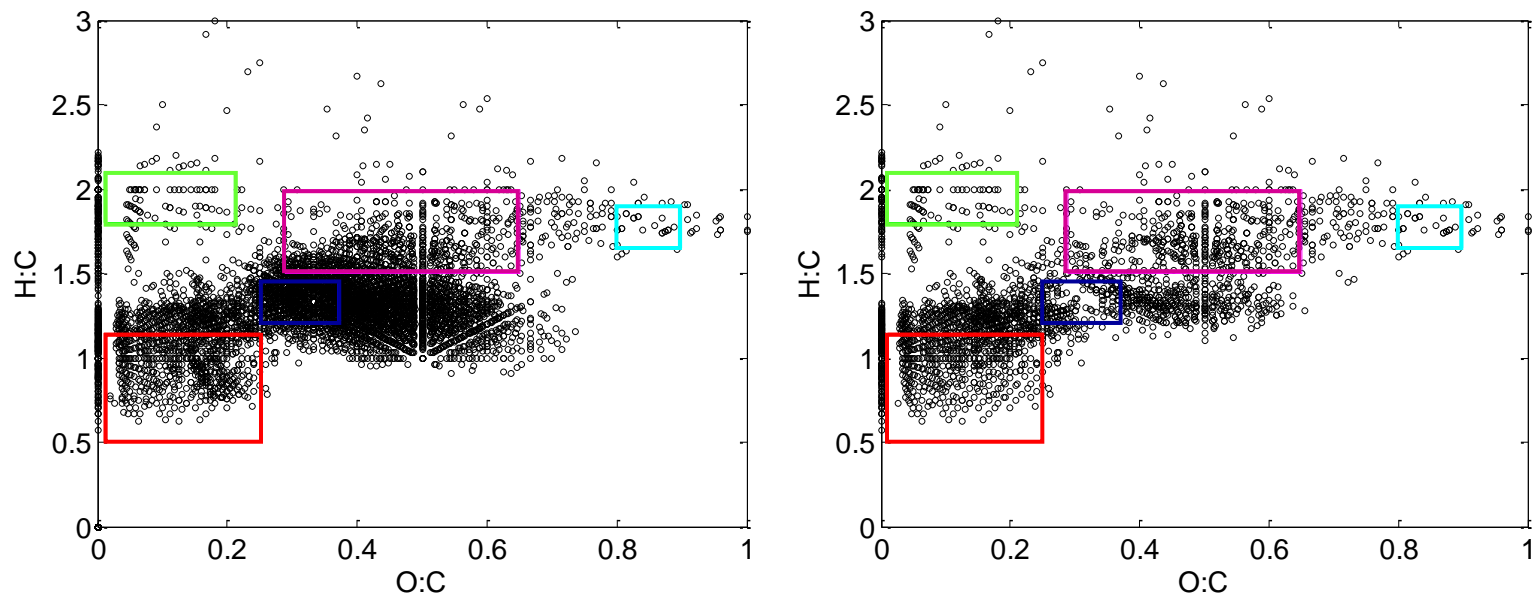
### *Van Krevelen diagrams*

In the following van Krevelen diagrams, the left hand plot contains all of the identified features for which formulas were assigned. The plot on the right hand side contains only N-containing features. The rectangles indicate regions associated with condensed hydrocarbons (red), lignin (dark blue), lipids (green), proteins (pink), and carbohydrates (light blue), as shown below.

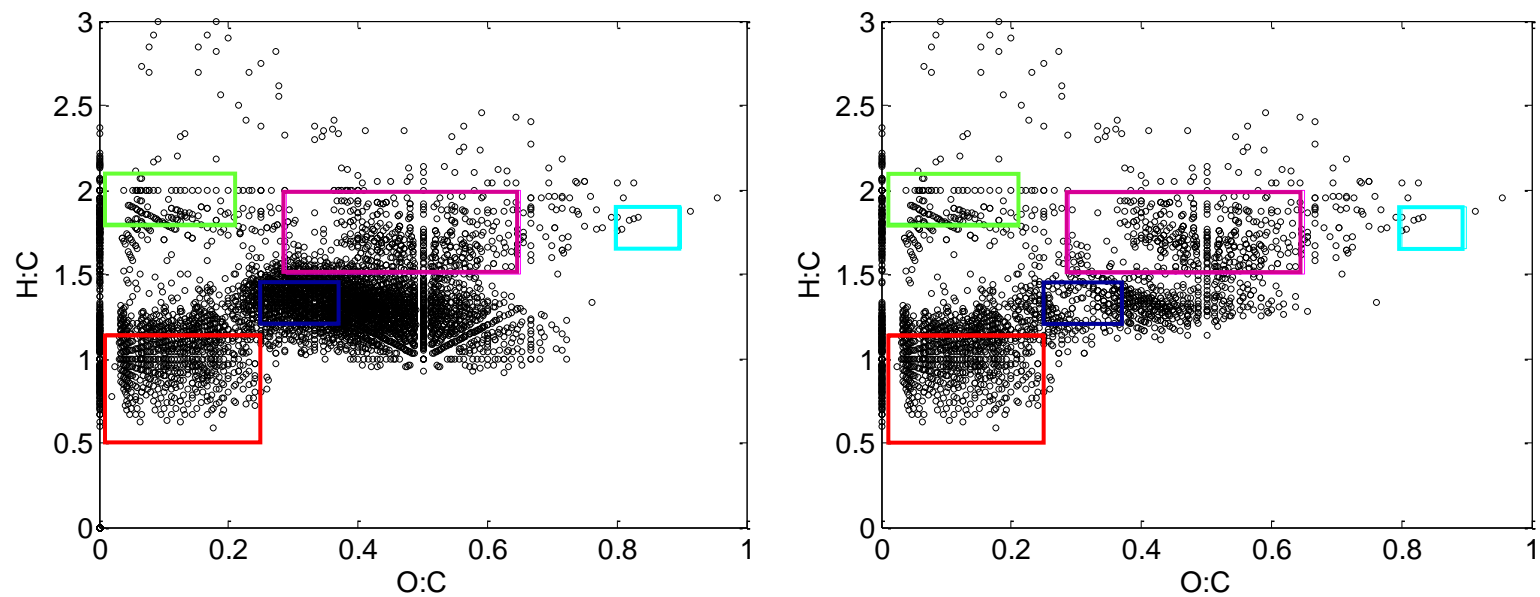




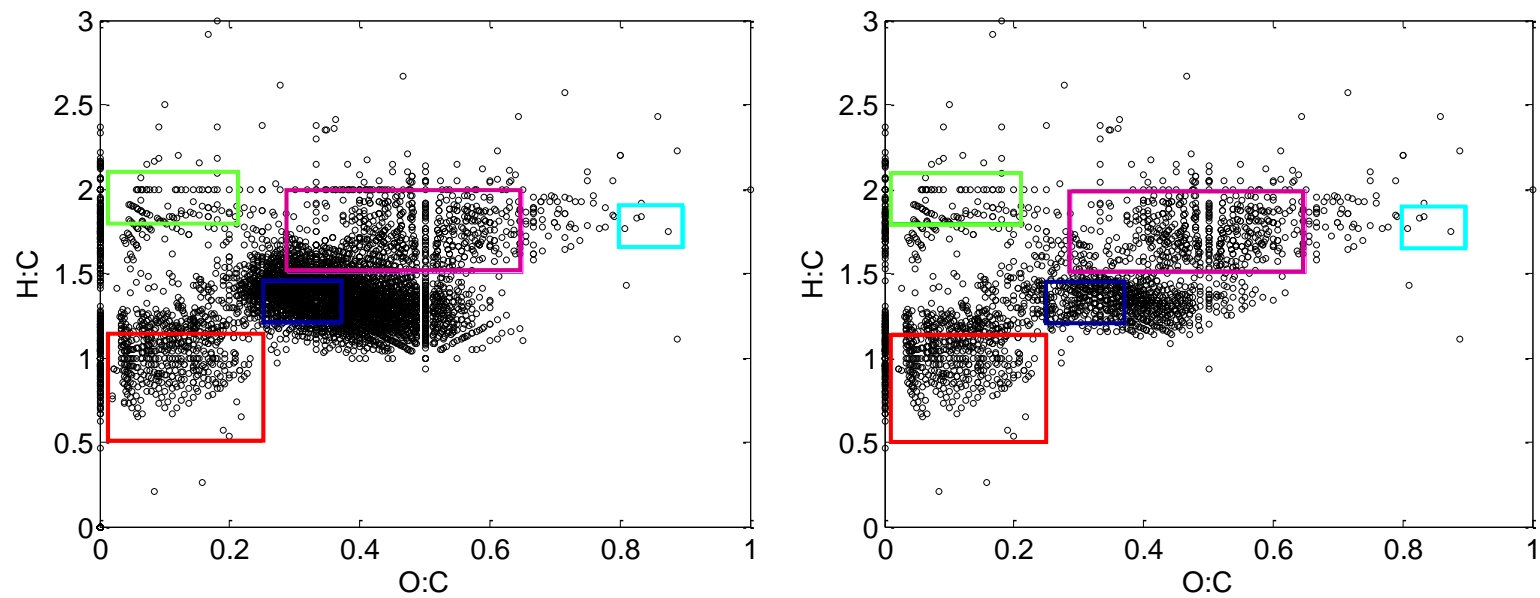
**Figure S2.** Van Krevelen diagrams for the Waquoit ground water samples.



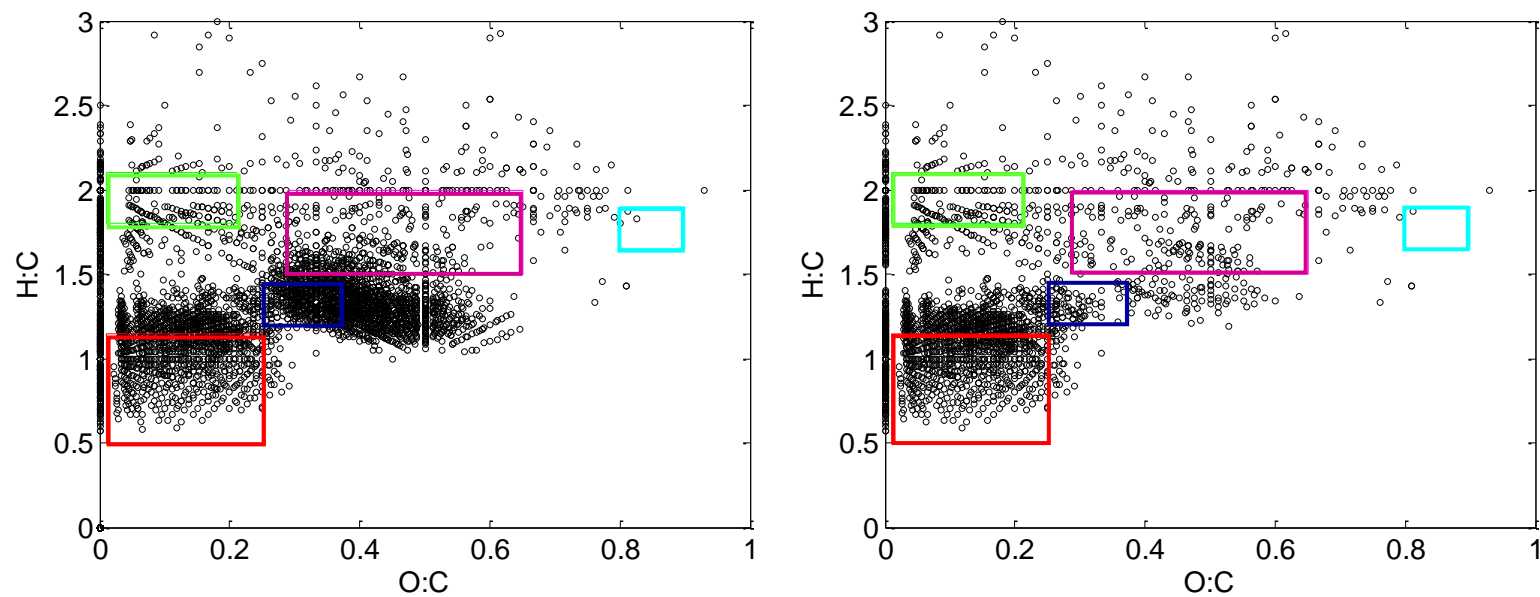
**Figure S3.** Van Krevelen diagrams for the Sage Lot ground water samples.



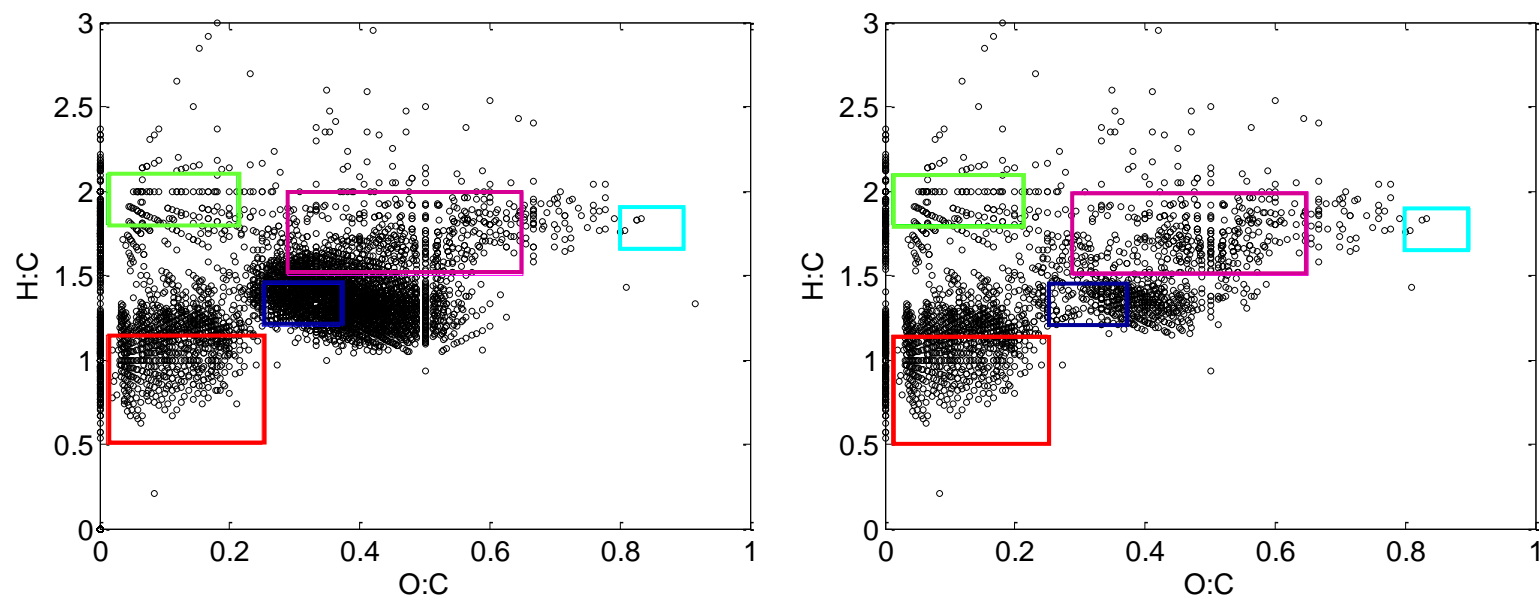
**Figure S4.** Van Krevelen diagrams for the Green Pond ground water samples.



**Figure S5.** Van Krevelen diagrams for the Site D1 ground water samples.



**Figure S6.** Van Krevelen diagrams for the Site D2 ground water samples.



**Figure S7.** Van Krevelen diagrams for the Site D3 ground water samples.