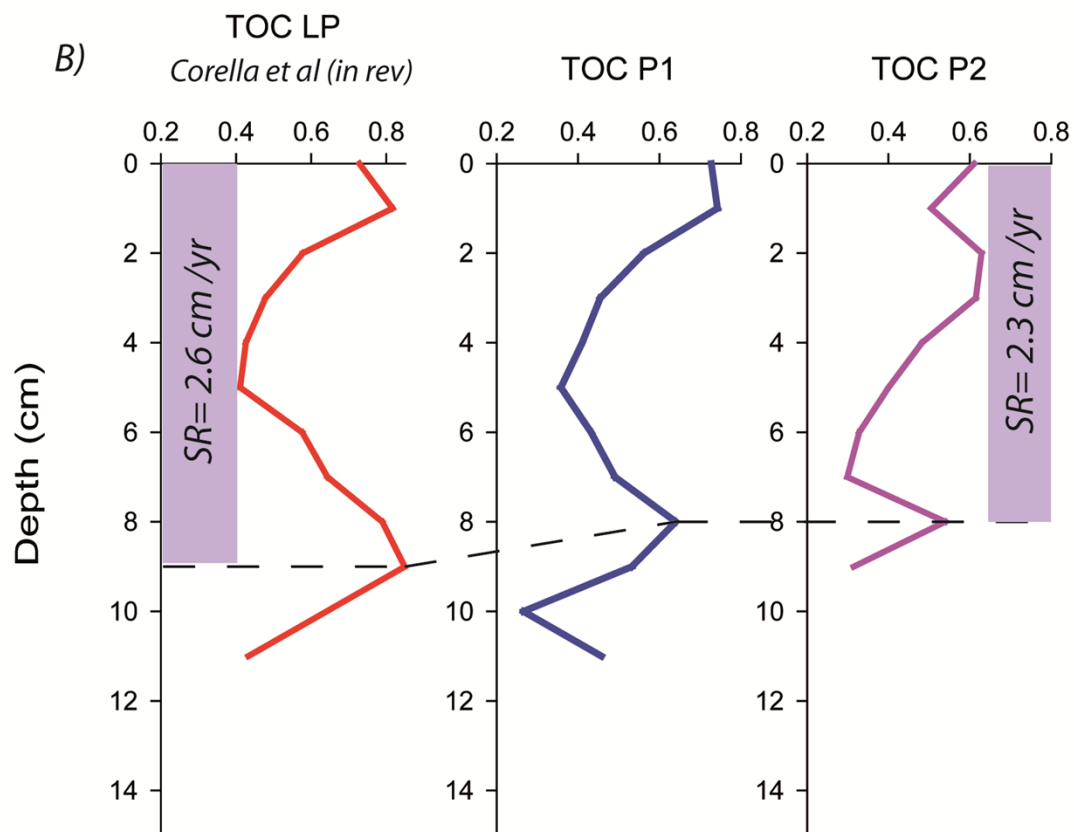
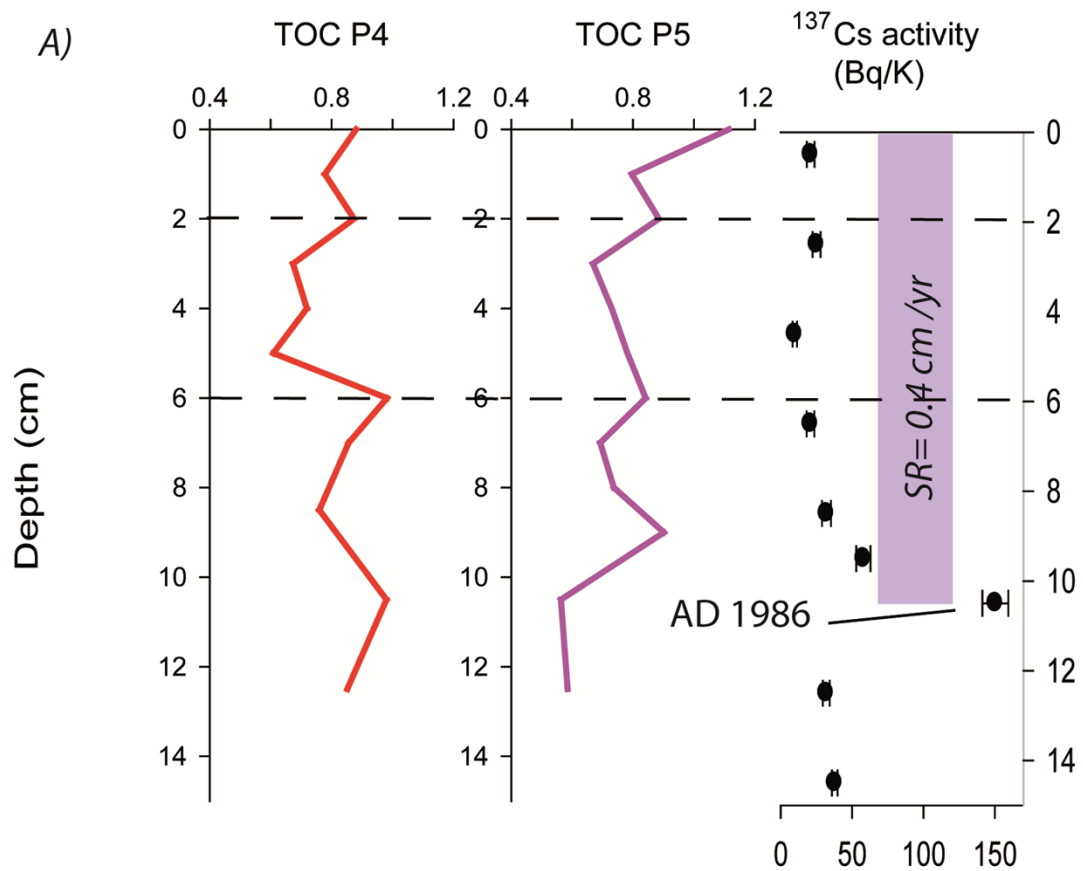


**Fig 1.** Location of Lake Geneva in Switzerland. Red square indicates the study area. High-resolution multibeam bathymetric map from 2008 (swiss coordinates - number of swiss grid are given in meters) modified from Sastre et al. (2010). Data courtesy of Institut F.-A. Forel, University of Geneva. Core locations of the cores from this study and core LP used for sedimentation rates estimation for cores #1 and #2.



**Fig 2.** Correlation between cores #4 and #5 with  $^{137}\text{Cs}$  activity profile from #5 (A) and cores #1, #2 and core LP which was also dated by  $^{137}\text{Cs}$  (B, c.f. Corella et al 2014).

## References

- Corella JP, Arantegui A, Loizeau JL, DelSontro T, Dantec N, Stark N, Anselmetti FS, Girardclos S (2013) Sediment dynamics in the subaquatic channel of the Rhone delta (Lake Geneva, France/Switzerland). *Aquatic Sciences*:1-15. doi:10.1007/s00027-013-0309-4
- Sastre V, Loizeau JL, Greinert J, Naudts L, Arpagaus P, Anselmetti F, Wildi W (2010) Morphology and recent history of the Rhone River Delta in Lake Geneva (Switzerland). *Swiss Journal of Geosciences* 103 (1):33-42. doi:10.1007/s00015-010-0006-4