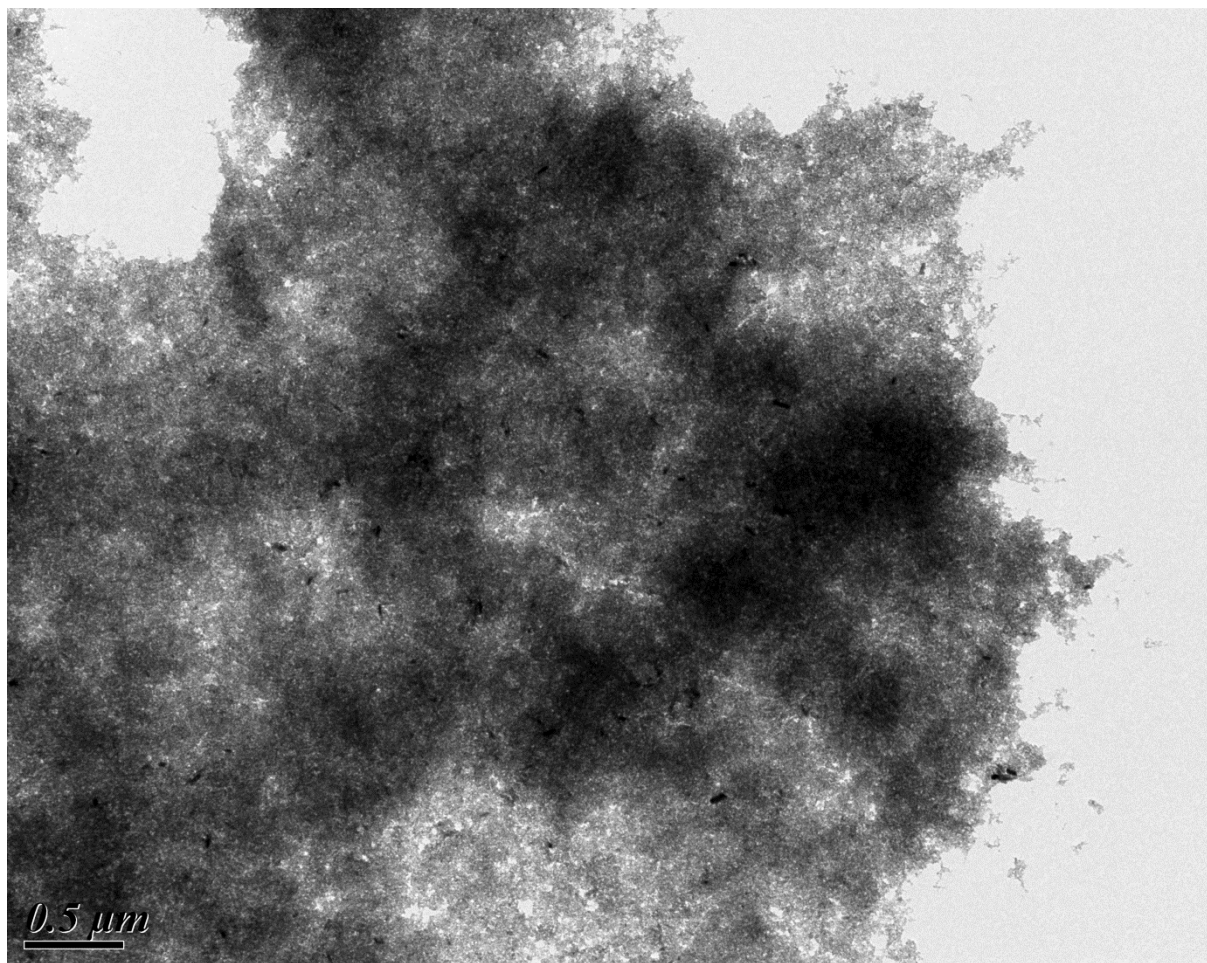
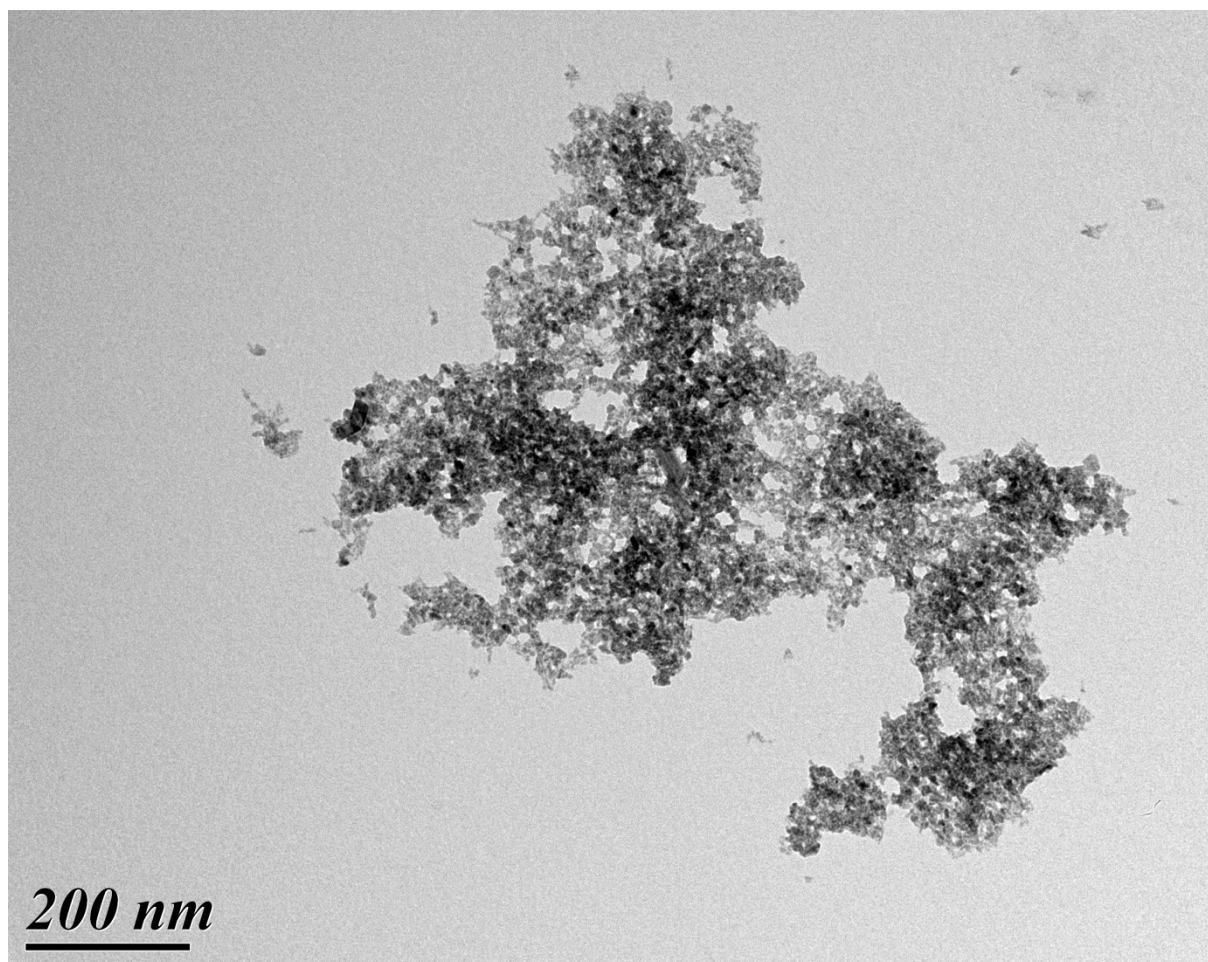


S1 - Transmission Electron Microscopy image of dispersed TiO₂ NPs at pH 4.5 and 500,000× magnification. Isolated and small aggregates are observed. [TiO₂] = 100 mg/L.

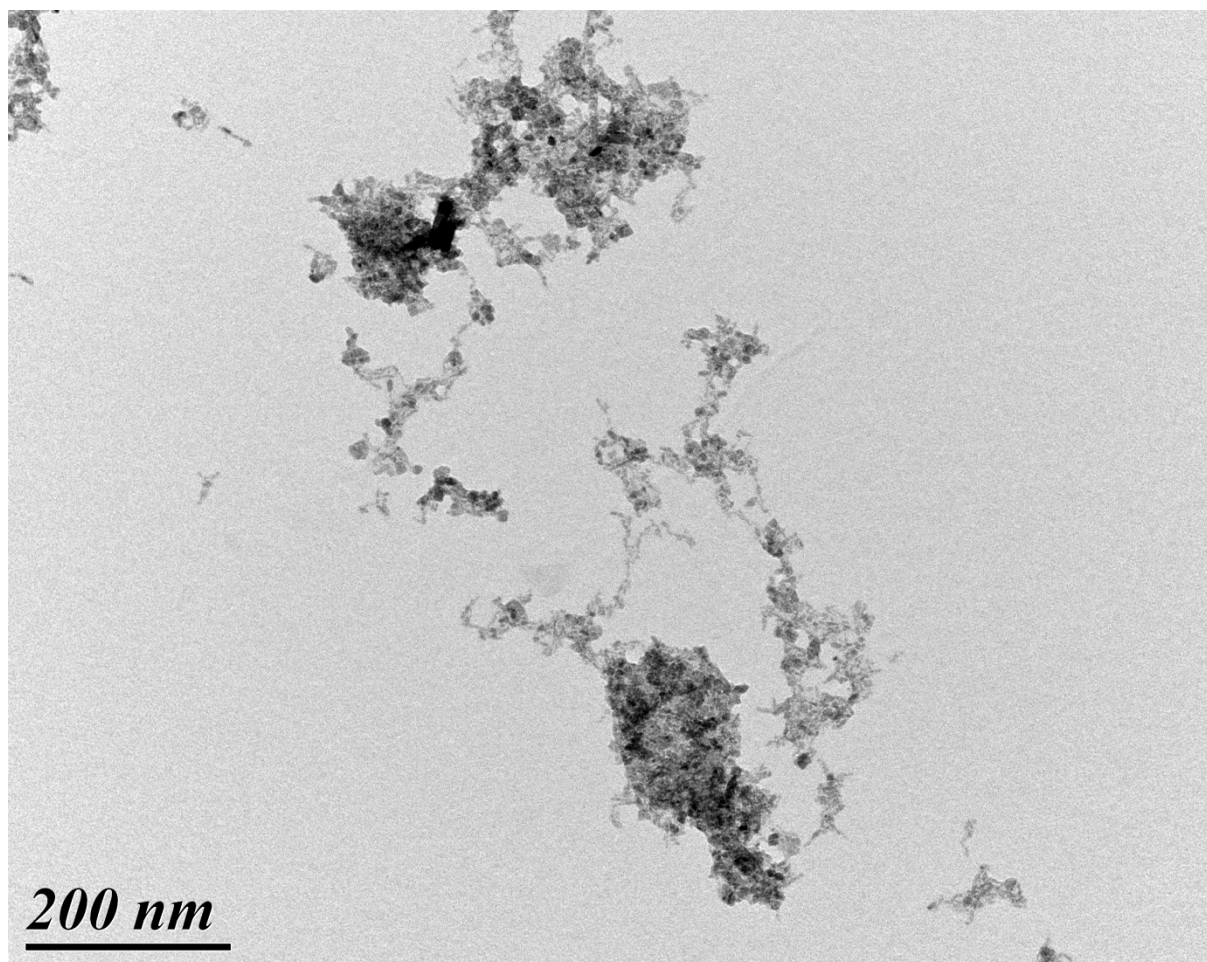


S2 - TEM image of TiO_2 aggregates at $\text{pH} = 6.2 = \text{pH}_{\text{PZC}, \text{TiO}_2}$ and $30,000\times$ magnification.

Large agglomerates are observed. $[\text{TiO}_2] = 100 \text{ mg/L}$.



S3 - TEM image of TiO_2 NPs aggregate fragments at pH 6.2 in the presence of alginate at 120,000 \times magnification. The presence of alginate resulted in the fragmentation of agglomerates. $[\text{TiO}_2] = 100 \text{ mg/L}$; $[\text{Alginate}] = 6 \text{ mg/L}$.



S4 - TEM image of TiO_2 NPs aggregate fragments at $\text{pH} = 6.2$ in the presence of SRHA at $100,000\times$ magnification. The presence of SRHA lead to the fragmentation of agglomerates. $[\text{TiO}_2] = 100 \text{ mg/L}$; $[\text{SRHA}] = 10 \text{ mg/L}$.