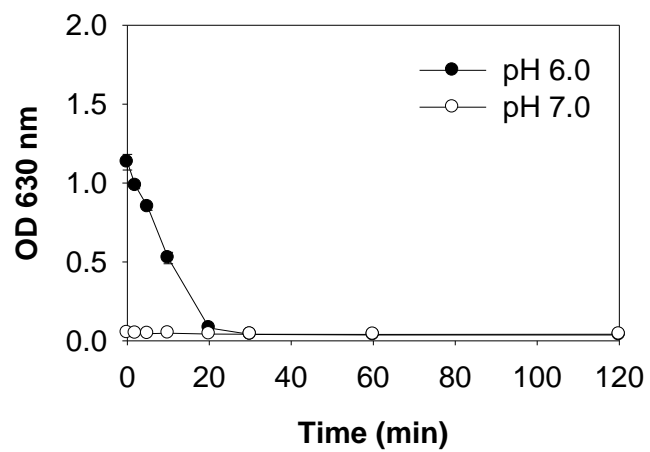
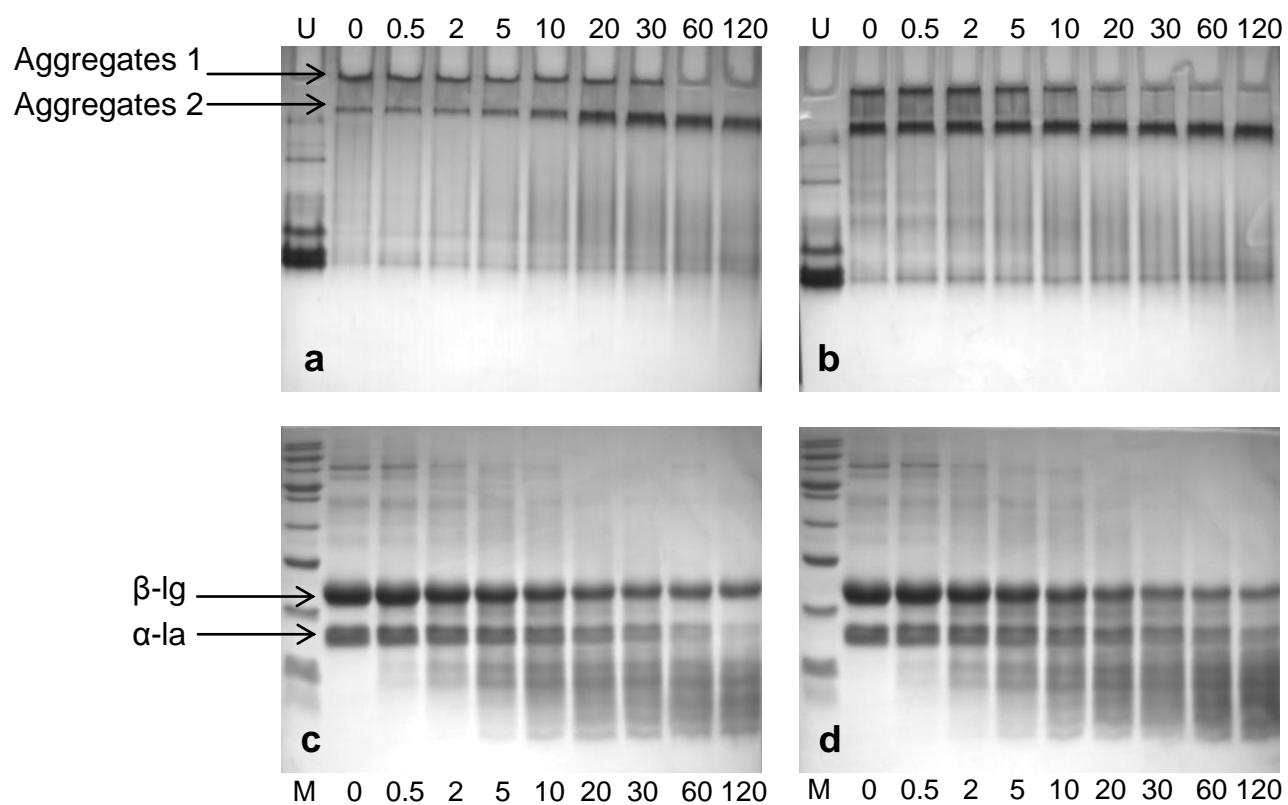
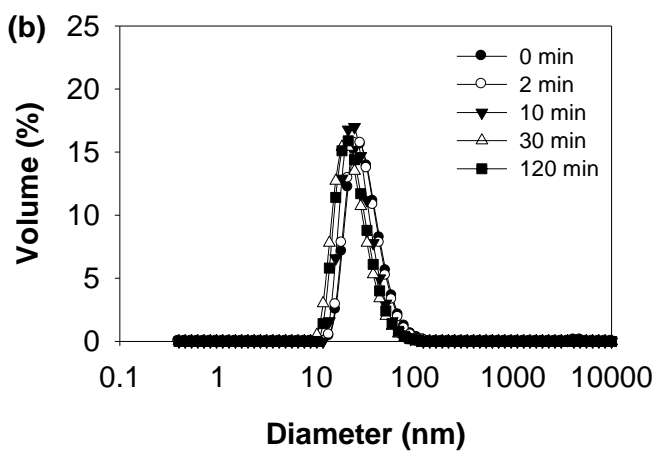
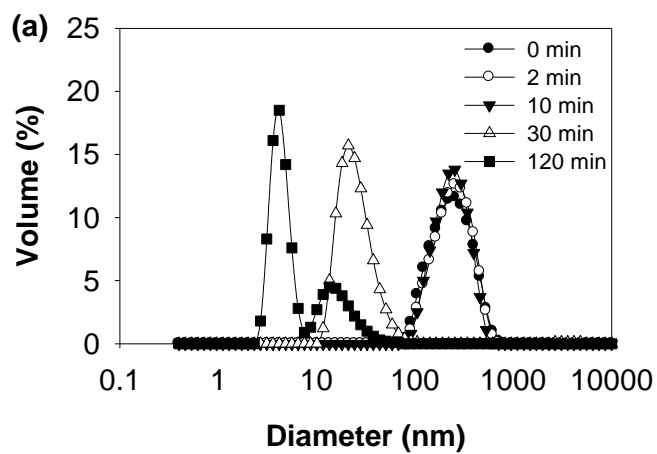


**Figure S1.** Turbidity changes of WPI and SGF mixture during digestion.





**Figure S2.** Native-PAGE (a and b) and SDS-PAGE (c and d) profiles of *in vitro* digestion of WPI and different pH: (a and c) pH 6.0; (b and d) pH 7.0. Lane 1,  $\beta$ -lg for native-PAGE and maker for SDS-PAGE; lane 2, preheated WPI; lane 3–10, samples digested for 0.5, 2, 5, 10, 20, 30, 60, and 120 min, respectively.



**Figure S3.** Particle size distributions of heated WPI at selected times during *in vitro* gastric digestion: (a) pH 6.0; (b) pH 7.0.