

Supporting Information

Methods and procedures

MS Scan ESI

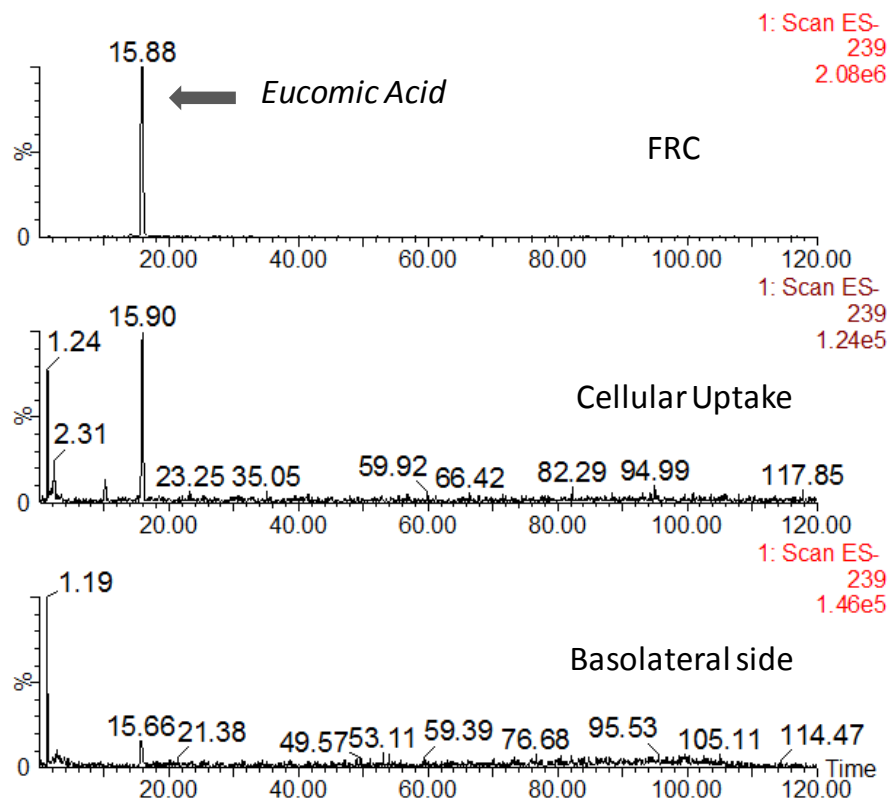


Figure S1 - Chromatograms from the analysis of FRC, solutions of cellular uptake and transepithelial transport (basolateral side) at m/z 239 (Eucomic acid).

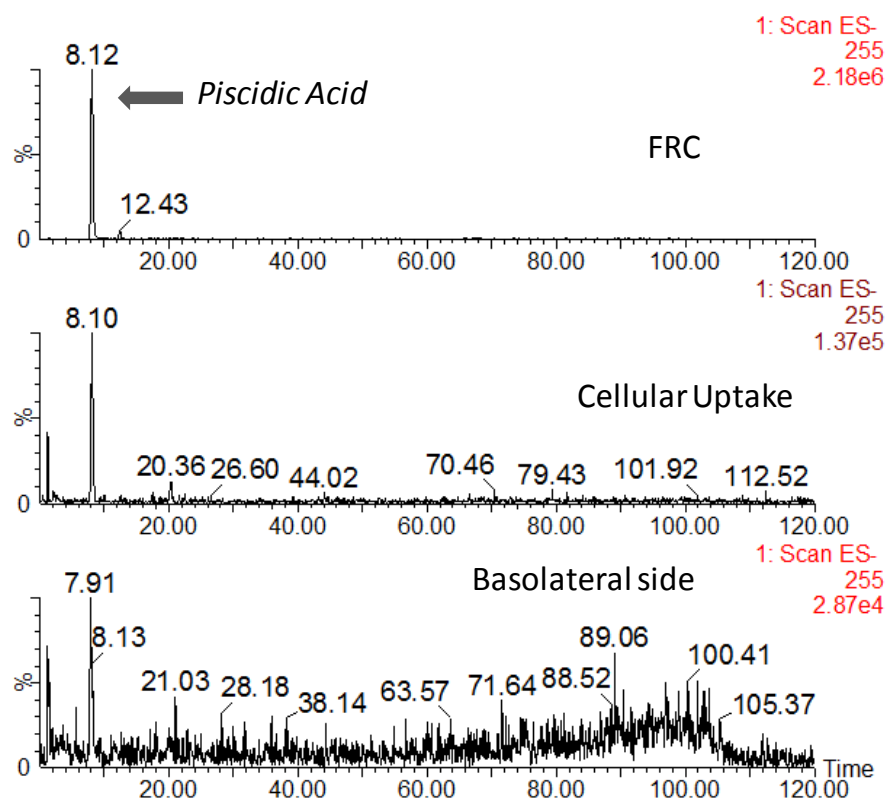


Figure S2 - Chromatograms from the analysis of FRC, solutions of cellular uptake and transepithelial transport (basolateral side) at m/z 255 (Piscidic acid).

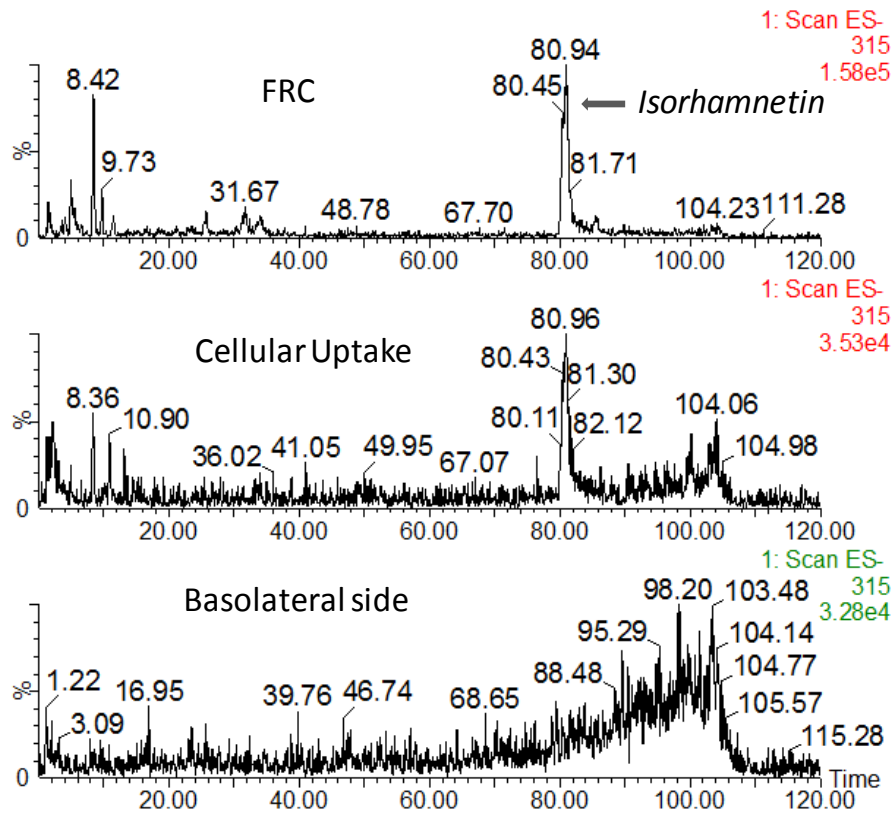


Figure S3 - Chromatograms from the analysis of FRC, solutions of cellular uptake and transepithelial transport (basolateral side) at m/z 315 (Isorhamnetin).