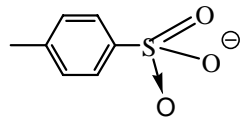


Supplementary information

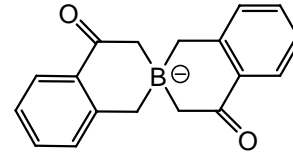
Molecular structures of the anions of ILs evaluated in this work (corresponding to Table 1)

| Group I | | Group II | | Group III | |
|---------------------------------------|---------------------|--------------------------------|---------------------|-------------------------------------|---------------------|
| Anion types | Molecular structure | Anion types | Molecular structure | Anion types | Molecular structure |
| acetate | | ethylsulfate | | bis(trifluoromethyl)imide | |
| decanoate | | octylsulfate | | bis(trifluoromethylsulfonyl)methane | |
| bis(2,4,4-trimethylpentyl)phosphinate | | butylsulfate | | clo4 | |
| cl | Cl^\ominus | methylsulfate | | tetracyanoborate | |
| Dihydricphosphate | | dicyanamide | | bisoxalatoborate | |
| dimethylphosphate | | Bisbiphenyldiolatoborate | | BF4 | |
| Br | Br^\ominus | bispentafluoroethylphosphinate | | tf2N | |

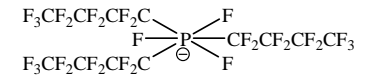
toluene-4-sulfonate



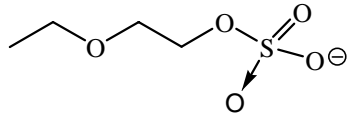
bissalicylatoborate



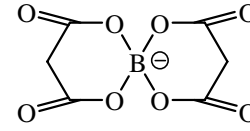
tris(nonafluorobutyl)trifluorophosphate



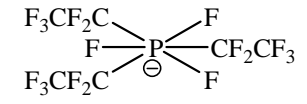
ethoxyethylsulfate



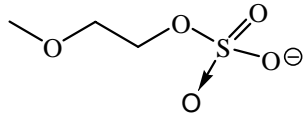
bismalonatoborate



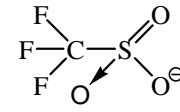
tris(pentafluoroethyl)trifluorophosphate



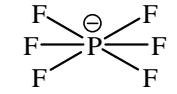
methoxyethylsulfate



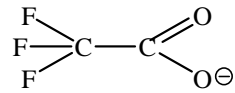
trifluoromethane-sulfonate



PF6



trifluoroacetate



nitrate

