

Supporting Informations

It is “2-imino-4-thiazolidinones” and not thiohydantoins as the reaction product of 1,3-disubstituted thioureas and chloroacetylchloride

Ramesh Yella,^a Harisadhan Ghosh,^a and Bhisma K. Patel^{*a}

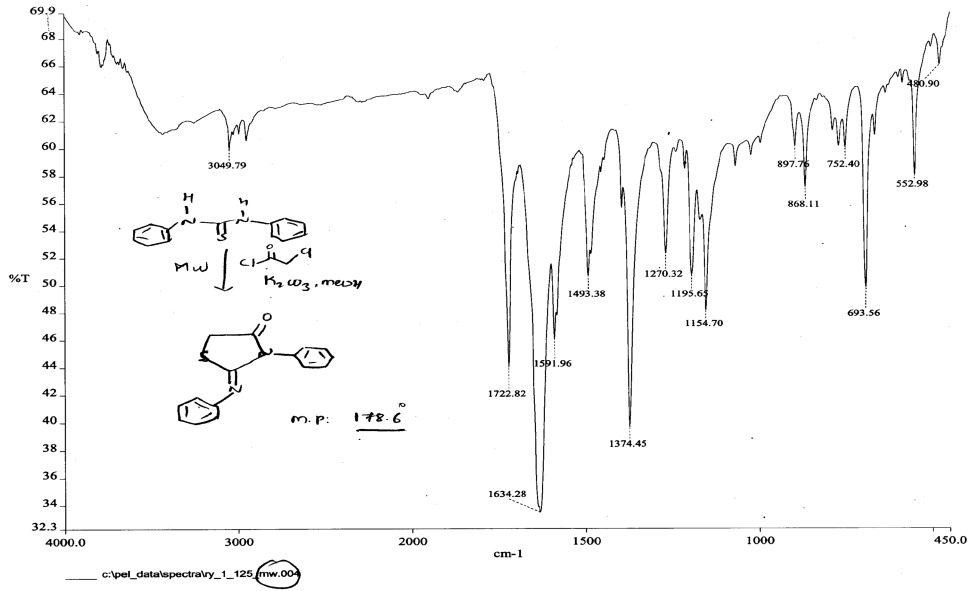
^a *Department of Chemistry, Indian Institute of Technology Guwahati, Guwahati -781 039, Assam, India.*

E-mail: patel@iitg.ernet.in.

List of Contents

1. IR Spectra of 1a	S3
2. ¹ H NMR of 1a	S4
3. ¹³ C NMR of 1a	S5
4. MS of 1a	S6
5. COSY of 1a	S6
6. HETCOR of 1a	S8
7. IR Spectra of 2a	S9
8. ¹ H NMR of 2a	S10
9. ¹³ C NMR of 2a	S11
10. HRMS of 2a	S12
11. IR Spectra of 3a	S13
12. ¹ H NMR of 3a	S14
13. ¹³ C NMR of 3a	S15
14. MS of 3a	S16
15. IR Spectra of 4a	S17
16. ¹ H NMR of 4a	S18
17. ¹³ C NMR of 4a	S19
18. MS of 4a	S20
19. IR Spectra of 5a	S21
20. ¹ H NMR of 5a	S21
21. H NMR of 5a (expanded)	S23
22. ¹³ C NMR of 5a	S24
23. MS of 5a	S25

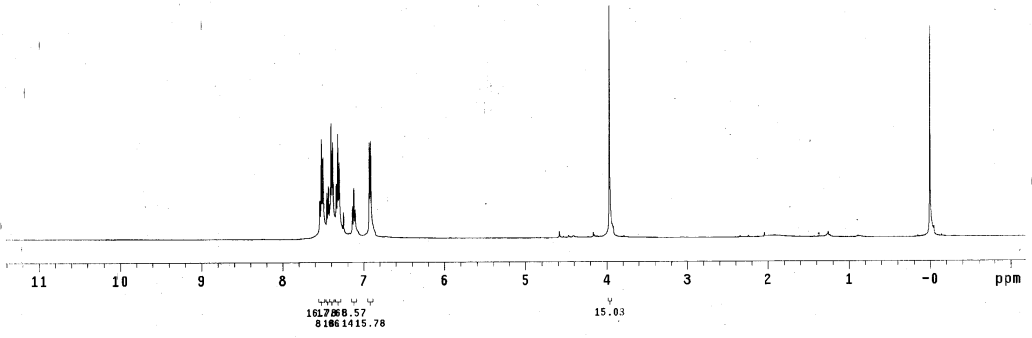
24. IR Spectra of 6a	S26
25. ¹ H NMR of 6a	S27
26. ¹³ C NMR of 6a	S28
27. MS of 6a	S29
28. IR Spectra of 7a	S30
29. ¹ H NMR of 7a	S31
30. ¹³ C NMR of 7a	S32
31. MS of 7a	S33
32. IR Spectra of 8a	S34
33. ¹ H NMR of 8a	S35
34. ¹³ C NMR of 8a	S36
35. IR Spectra of 9a	S37
36. ¹ H NMR of 9a	S38
37. ¹³ C NMR of 9a	S39
38. IR Spectra of 10a	S40
39. ¹ H NMR of 10a	S41
40. ¹³ C NMR of 10a	S42
41. MS of 10a	S43
42. IR Spectra of 11a	S44
43. ¹ H NMR of 11a	S45
44. ¹³ C NMR of 11a	S46
45. MS of 11a	S47
46. IR Spectra of 12a	S48
47. ¹ H NMR of 12a	S49
48. ¹³ C NMR of 12a	S50
49. MS of 12a	S51

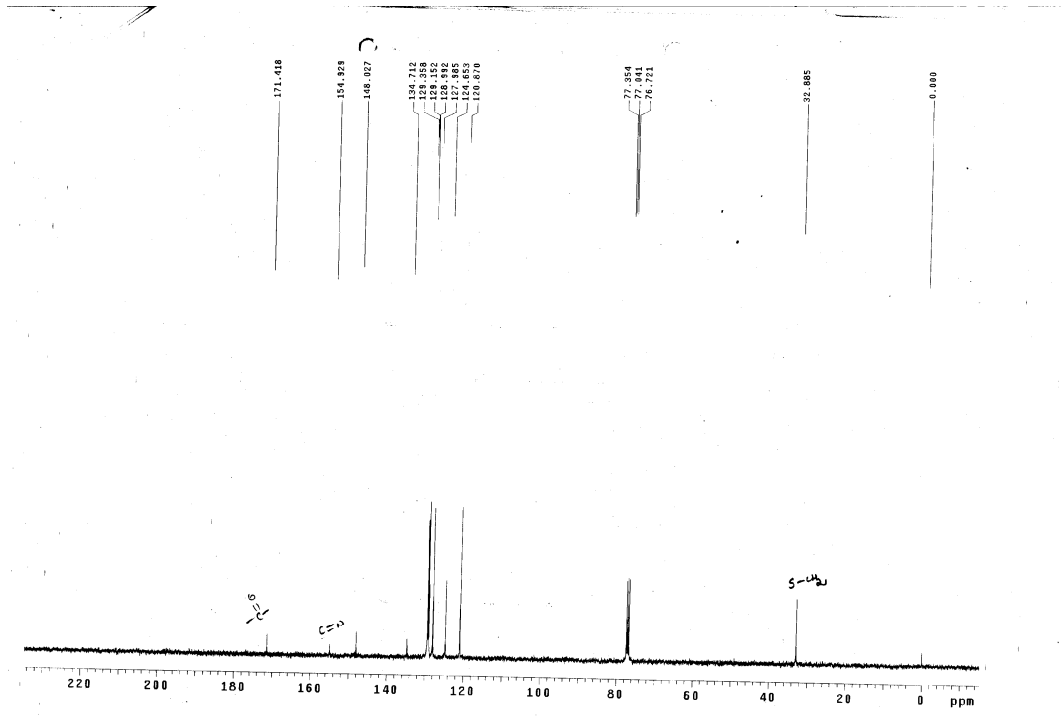


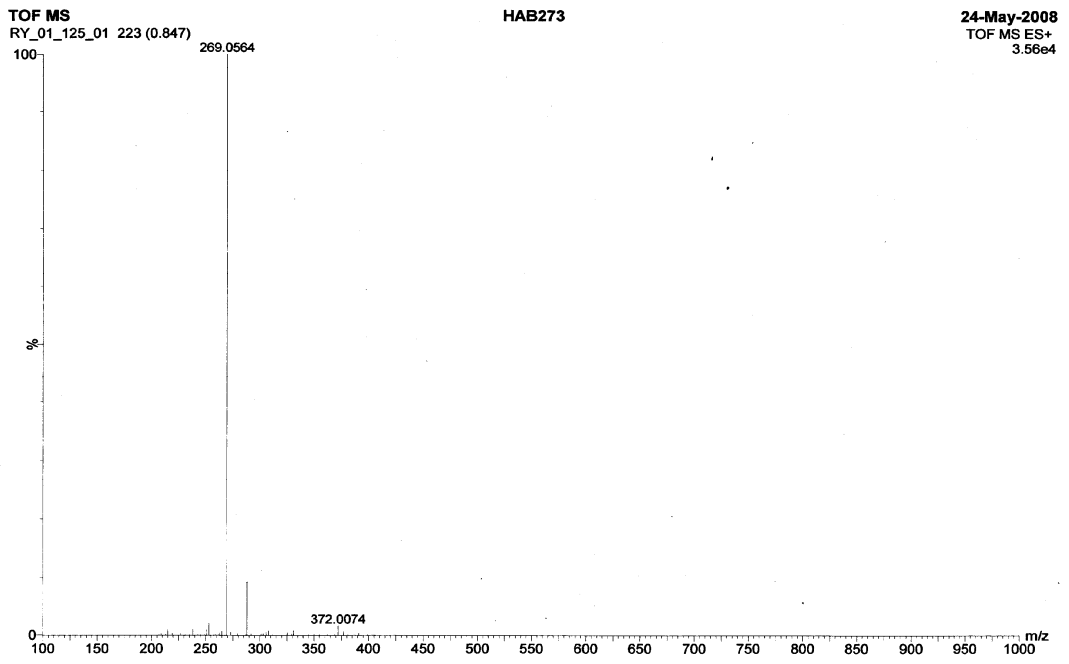
RV_1125

exp1 std1h

```
SAMPLE DEC. & VT
date Apr 24 2008 dfrq 399.853
solvent CDC13 dn H1
file exp dpr 30
ACQUISITION dof 0
effq 399.853 dm nnn
in H1 dm c
at 1.883 dmf PROCESSING 200
np 23936
sv 6005.0 wtf file
fb not used proc ft
bs 4 fn not used
tpwr 57
pw 7.0 wsr
p1 1.000 wexp
tot 0 wbs
nt 32 wnt
ct 32
elock n
gain not used
FLAGS n
ll n
ln n
dp DISPLAY y
sp -471.4
wp 5042.6
vs 53
sc 0
wc 250
hznm 20.17
fs 996.94
ffl 369.8
rff 0
ln 8
ths 100.000
nm cdc ph
```



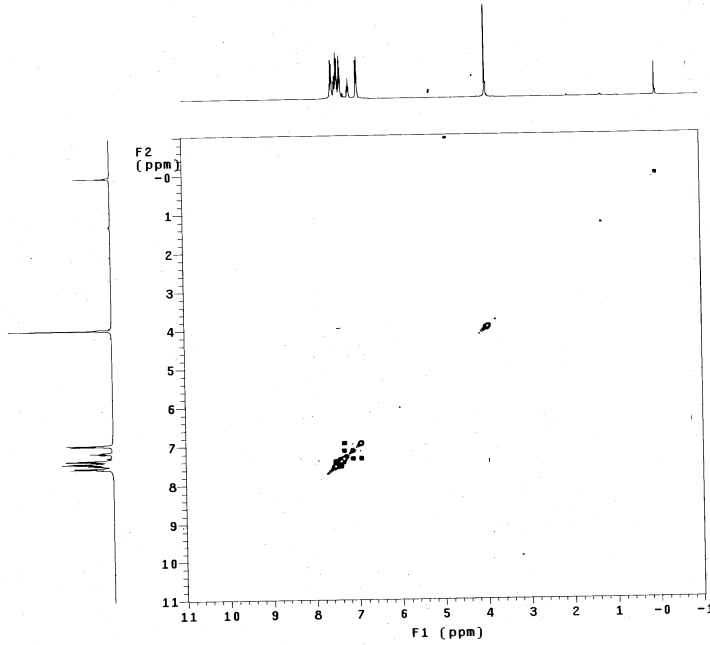




Archive directory: /export/home/patel/vnmrsws/data
Sample directory: patel_25May2008
F11b: COSY

Pulse Sequence: COSY
Solvent: CDCl3
Ambient Temperature
Mercury-400BB "litg400cif"

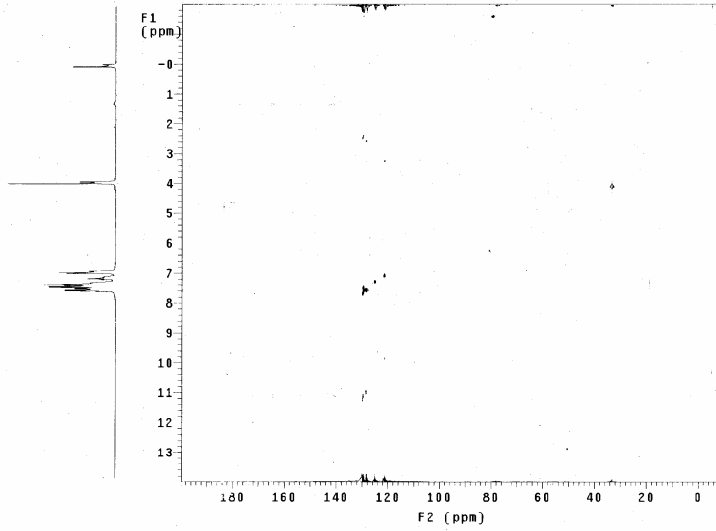
Relax. delay 1.000 sec
Acq. time 0.213 sec
Width 4897.7 Hz
SD Width 4897.7 Hz
2 repetitions
128 increments
OBSERV1 H1 399.8509678 MHz
DATA PROCESSING
Sg. sine bell 0.107 sec
F1 DATA PROCESSING
Sg. sine bell 0.027 sec
F1 size 2048 x 2048
Total time 6 min. 59 sec

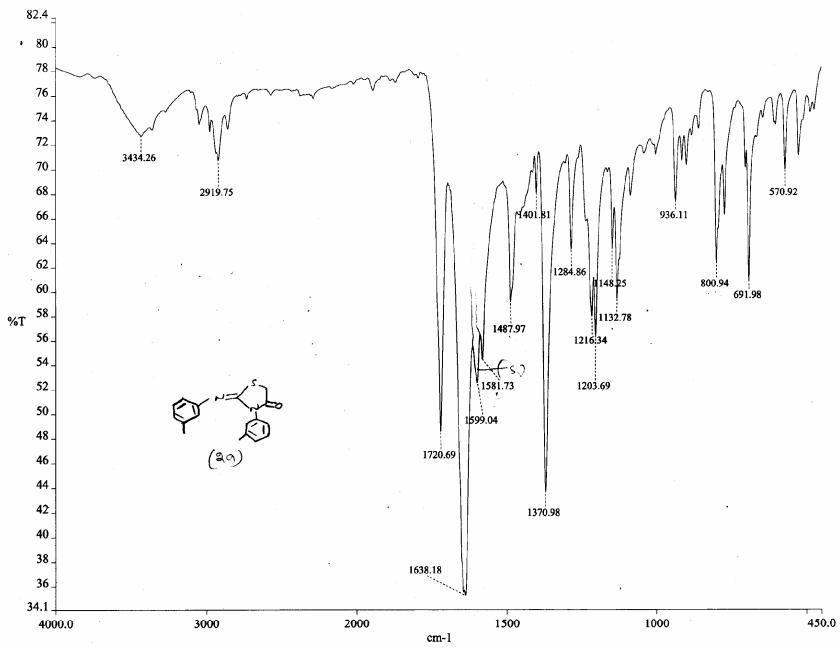


Archive directory: /export/home/patel/vmrsys/data
Sample directory: patel_25May2008-02:49:36
File: HETCOR

Pulse Sequence: HETCOR
Solvent: CDCl3
Ambient temperature
Mercury-40005 "litg400ctf"

Relax. delay 1.000 sec
Acq. time 0.049 sec
Width 21008.4 Hz
SD Width 6288.8 Hz
S4 repetitions
2 x S12 increments
OBSERVE C13, 100.5425807 MHz
DECUPLE H1, 399.8533625 MHz
Power 42 dB
On during acquisition
off during delay
WALTZ-16 modulated
DATA PROCESSING
Gauss apodization 0.022 sec
F1 DATA PROCESSING
Gauss apodization 0.074 sec
F1 size 2048 x 4096
Total time 20 hr, 50 min, 14 sec





c:\pel_data\spectra\rameshry_1_173_3 methyl.sp - 3, methyl symm

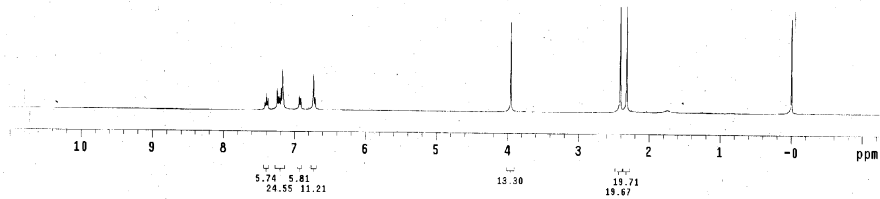
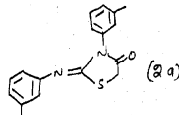
RY_173
exp1 s2pul

SAMPLE		SPECIAL	
date	Jun 10 2008	temp	not used
solvent	CDCl3	gbin	not used
file	/export/home/~ spin	dot	not used
patel/Patel_Ry_1_	hst	0.008	
72.116	ppm	15.700	
ACQUISITION		atfa	20.000

ACQUISITION		FLAGS	
sv	6388.8		
at	1.888	f1	n
np	25528	in	n
fo	not used	dp	y
bs	4	hs	nm
at	1.600		
nt	32	lb	0.10
ct	32	fn	65536

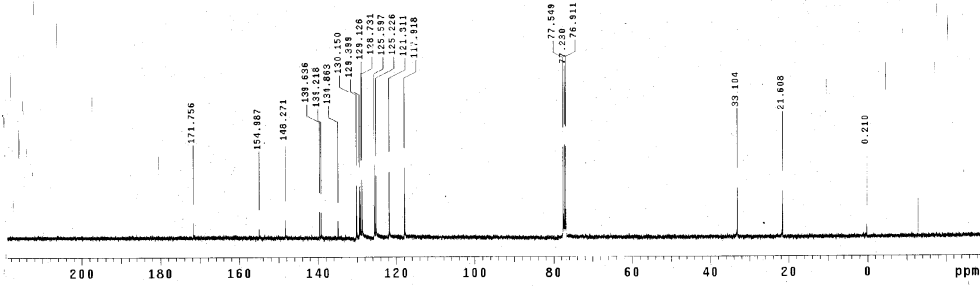
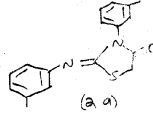
TRANSMITTER		DISPLAY	
tn	H1	sp	-514.4
sfrq	399.853	wp	4928.4
tof	362.8	rfl	783.3
tpwr	57	rfd	0
pw	9.850	cp	129.1
deco		tp	-98.4

DECOUPLER		PLOT	
dn	C13		
dof	0	wc	250
dm	nmh	sc	0
dma	C	vs	25
dprf	50	th	6
dnt	15900	nm	cdc ph



RV_1_173_13C
ekpl std13c

```
SAMPLE          DEC. & VT
date Jun 23 2008 dfrq 399.853
solvent CDCl3  sn W1
fil exp dpwr 42
ACQUISITION    exp dpwr 0
sfrq 100.552  dm  yyy
tn C13  dm  8900
et 1.158  dmf
np 58868  PROCESSING
sw 25000.0  lb 1.00
ds 43000  proc
spwr 64  wfrile ft
pw 8.7  in  not used
qt 0  wefr
sor 0  wekp
ns 10000  wds
ct 10000  wnt
alock n
gain not used
FLAGS
fl n
in n
dp y
DISPLAY
sp 24778.8
wg 24899.2
vs 24
sc 0
wc 250
hzmm 100.00
ls 500.00
rf1 10745.2
rf2 7754.3
th 2
ns 100.000
nm no ph
```

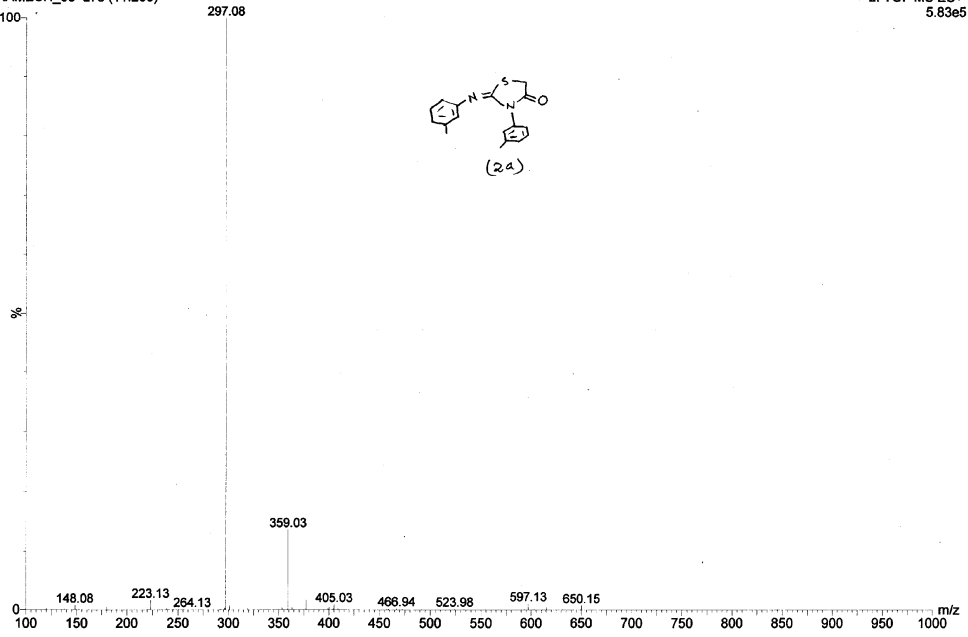


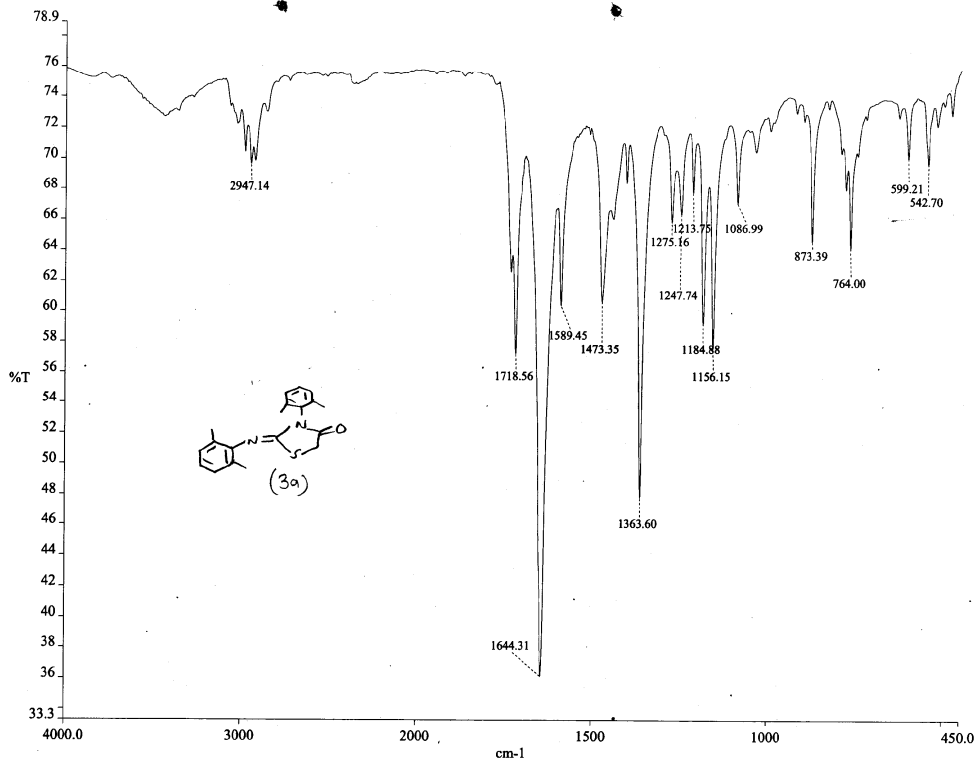
-S12-

TOF MS
RAMESH_03 273 (11.263)

HAB273

16-Jun-2008
2: TOF MS ES+
5.83e5

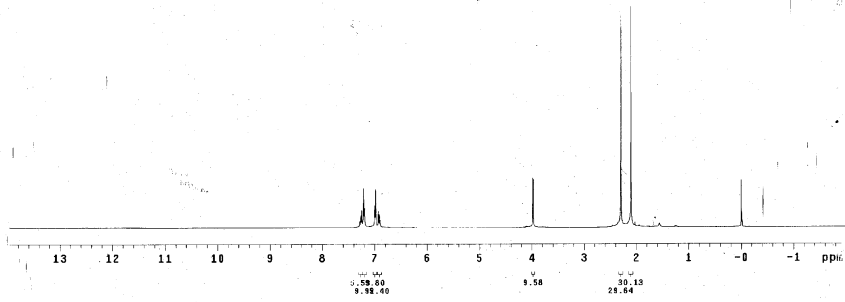
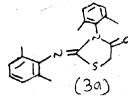




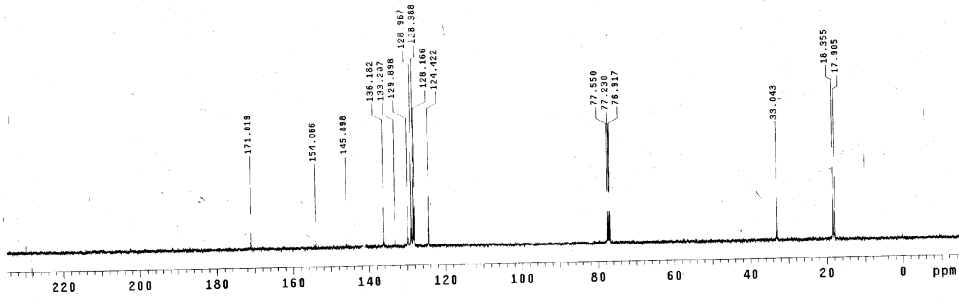
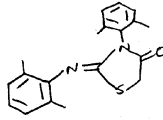
c:\pel_data\spectra\ameshly_1_171_2,6 dimethyl symm.sp - 2,6 dimethyl symm

RY_1_171
exp1 s2pu1

SAMPLE		SPECIAL	
date	Jun 6 2006	temp	not used
solvent	CDCl3	gain	not used
file	exp	spin	not used
ACQUISITION		hst	0.000
sv	6558.6	wid	13.700
at	1.988	atfa	20.000
ap	25528	FLDS	n
pb	not used	l1	n
ss	0	in	0
sl	1.000	op	y
st	32	hs	nm
ci	TRANSMITTER	32	lb
tr	398.853	fn	65536
tof	382.8	sp	-886.9
tpw	57	wp	6283.5
pw	0.850	rfl	887.3
de	DECOUPLER	0	rfp
dn	C13	rp	133.9
dof	0	tp	-36.3
dm	nm	uc	250
dmp	50	sc	0
dof	15900	vc	66
dm		th	20
dm		cdc	ph

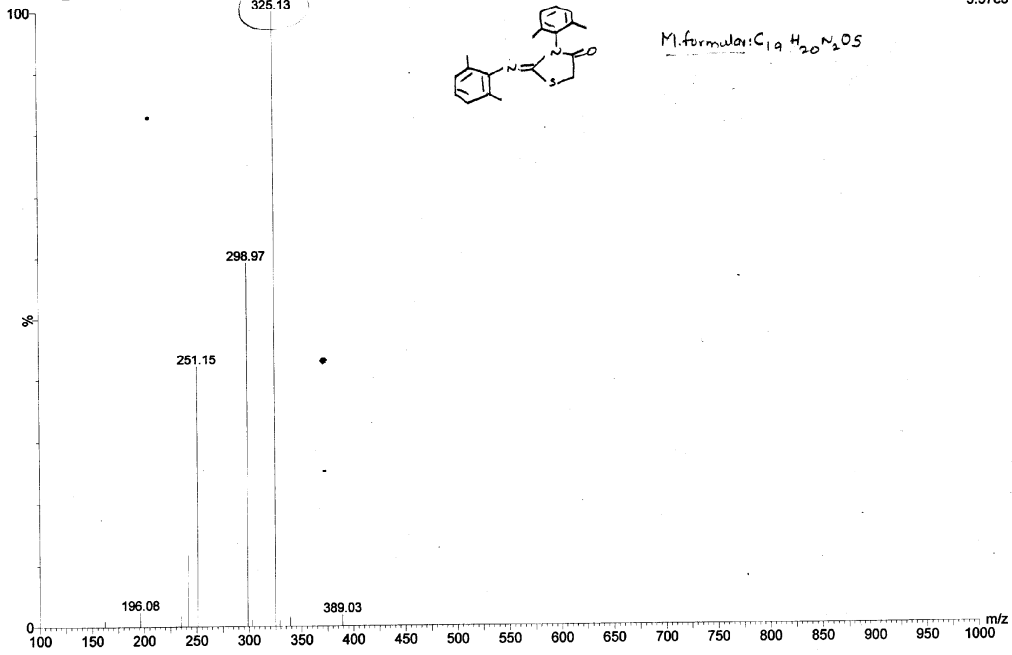


```
RY_1_171_13C
omp1 c2pu1
SAMPLE
date Jun 7 2008 temp not used
solvent CDC13 gain not used
file exp spin not used
ACQUISITION exp 0.008
sw 25125.6 pw90 20.000
et 1.189 d1FA 35.000
rb 00270 f1 FLAGS n
fs 13000 f2 n
bs 16 f3 n
dl 1.800 dp v
rl 2000 hc PROCESSING mn
ct 592 1b 2.00
tn C13 fn 65536
sTn 100.354 DISPLAY
tof 1536.3 sp -1511.5
tpwr 61 wp 25124.8
pw 9.300 rf1 9277.2
DECOUPLER rf2 7754.8
dn H1 fp -42.5
dof 0 fp PLOT -349.0
dm v wc 250
dpr 42 cc 0
dhf 8900 vs 26
nm no ph 2
```

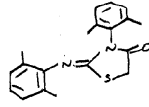


TOF MS

RAMESH_2,6_dimethyl 243 (10.018)

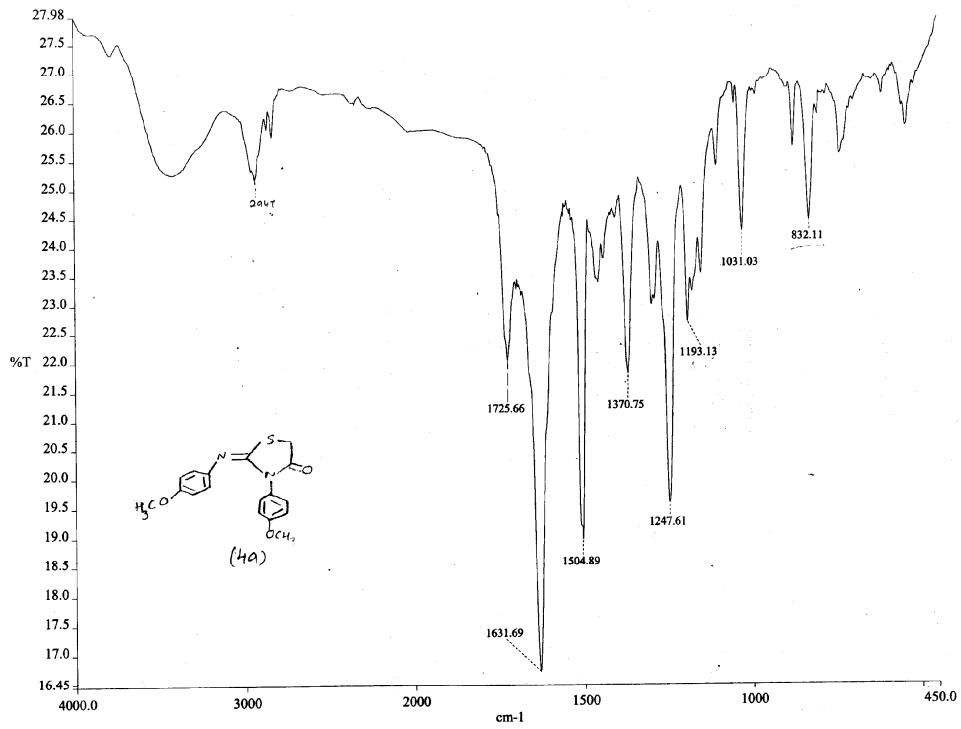


HAB273



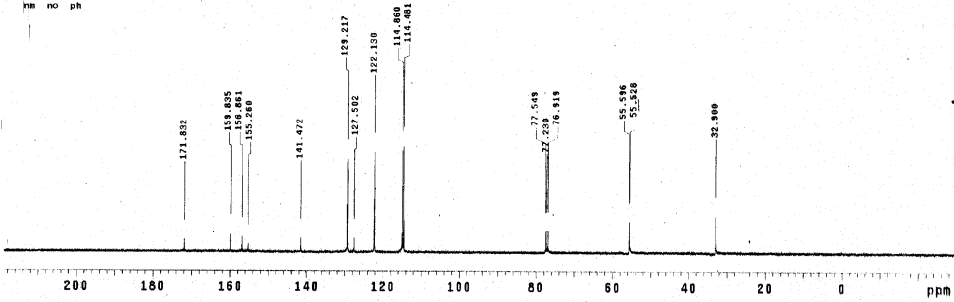
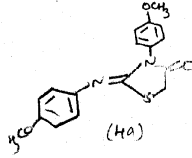
M. formula: C₁₉H₂₀N₂O

16-Jun-2008
2: TOF MS ES+
3.57e3



c:\pel_data\spectra\rameshry_1_165.sp

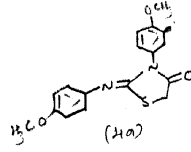
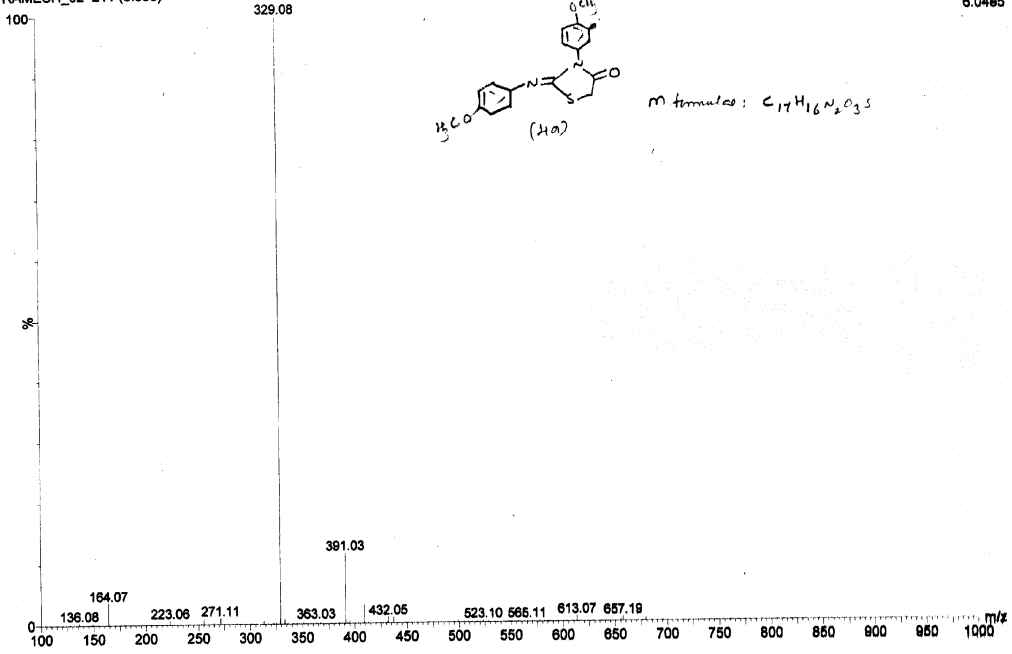

```
RV_1_185_13C
expt1 std13c
SAMPLE DEC. & VT
date May 30 2000 dfrq 399.693
solvent CDCl3 de HI
fil ACQUISITION exp gpwr 42
sfra 100.552 da dot 0
tn C13 dm yyy 0
st 1.198 dmf 8900
np 50868 PROCESSING
sw 25000.0 lb 1.00
fb 13800 wtflls ft
bs 32 proc
tpwr 61 fn not used
pw 8.7
d1 0 werr
tof 0 wexp
nt 3000 wbs
ct 3000 wnt
atck n
gain not used
FLAGS
fl n
in n
ds y
DISPLAY
sp 2300.4
wp 24999.2
vs 27
sc 0
wc 250
Hzmm 100.00
is 500.00
rft 18752.1
rfp 7784.3
tn 2
ins 100.000
nm no ph
```



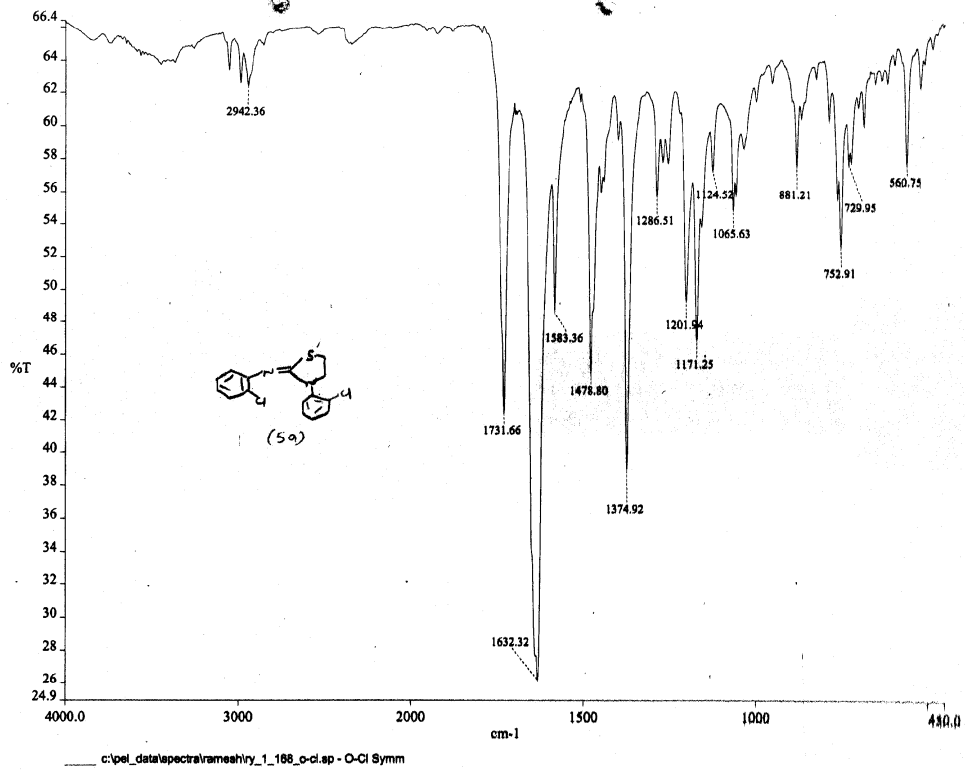
TOF MS
RAMESH_02 211 (8.699)

HAB273

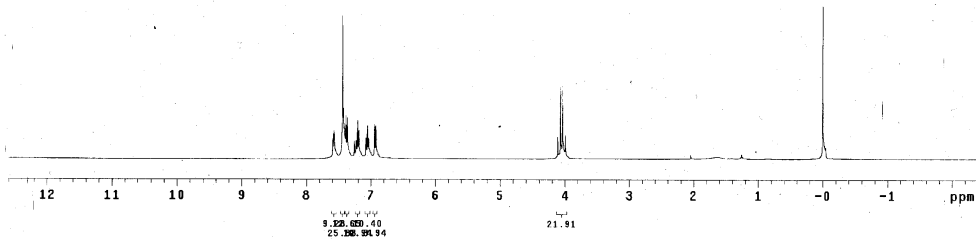
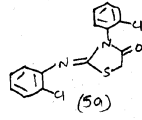
16-Jun-2008
2: TOF MS ES+
6.04e5

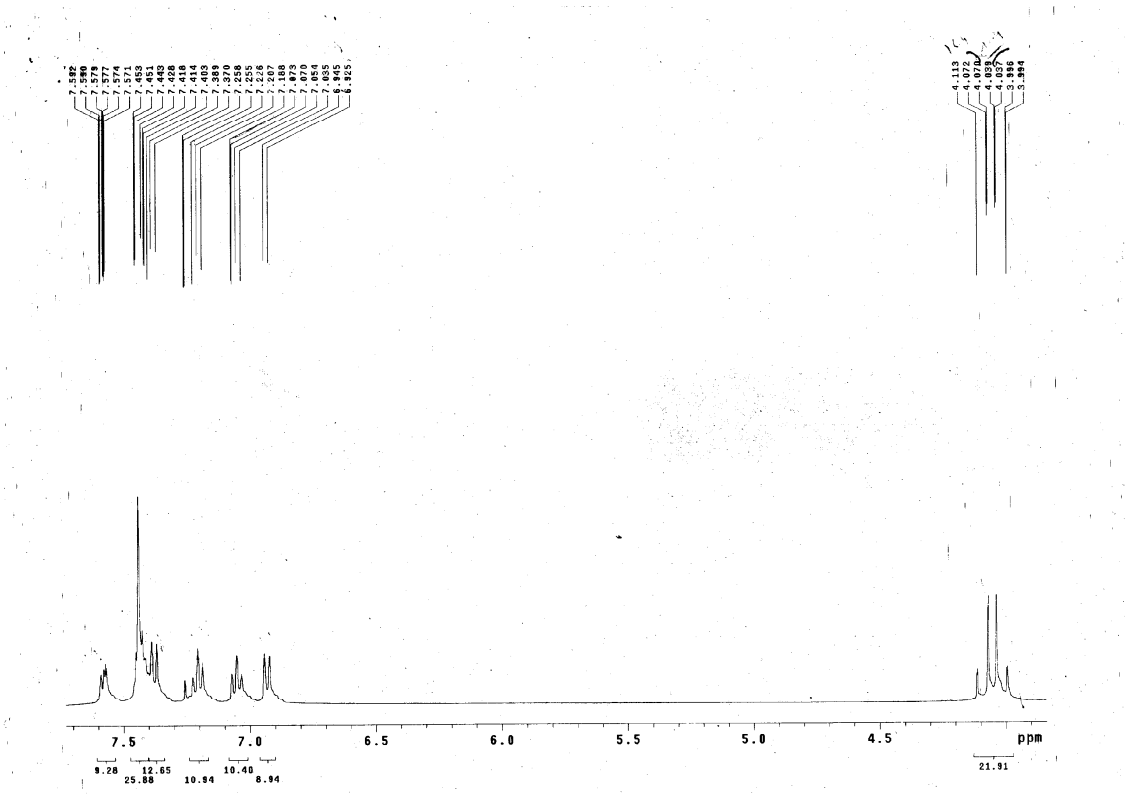


m formula: C₁₇H₁₆N₂O₃S



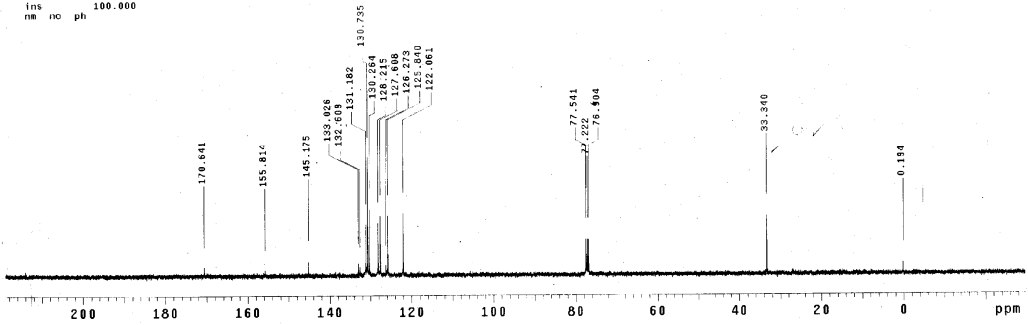
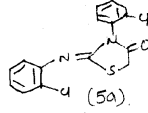
```
RY_1_168
expl stdin
SAMPLE
date Jun 4 2008 dfrq DEC. & VT 399.853
solvent CDCl3 dn H1
file ACQUISITION exp dpwr 30
sfrq 399.853 dm nnn
in 31 dem C
at 1.993 daf PROCESSING 200
np 22936
sw 6006.0 wtfile
fb not used proc ft
bk 4 fn not used
tpr 57
pw 7.0 werr
d1 1.000 wexp
sof 0 wds
nt 32 wnt
cl 32
clock n
gain not used
ll FLASK n
in n
dp DISPLAY y
sp -866.3
wp 8005.6
vc 38
sc 0
wc 250
hzma 24.02
ls 1280.19
rfi 988.7
rfp 0
sh 20
ins 100.000
nm cdc ph
```





RY_1_168_13C
expl std13c

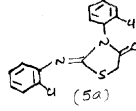
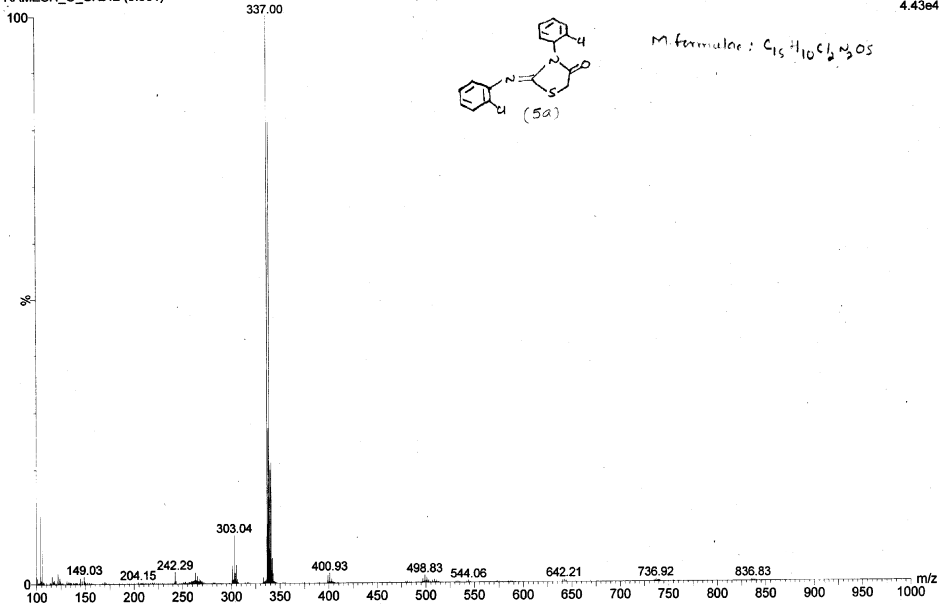
```
SAMPLE DEC. & VI  
date Jun 4 2008 dfrq 399.853  
solvent CDC13 dn 42  
file ACQUISITION exp dpr 0  
sfrq 100.552 dm yyy  
in C13 dmm w  
at 1.199 dmf 8900  
np 53908 PROCESSING  
sw 25000.0 lb 1.00  
fb 13800 wfile  
bs 16 proc ft  
tpwr 8.7 fn not used  
pv 0  
di 0 werr  
lof 0 wexp  
nt 3000 wbs  
ct 3000 wnt  
atock n  
gain not used  
FLAGS n  
il n  
in n  
op y  
DISPLAY  
sp -2361.1  
w0 24999.2  
vs 29  
sc 0  
wc 250  
h2mm 180.00  
ls 500.00  
rfi 10746.8  
rfp 7764.9  
th 1  
ins no ph 100.000
```



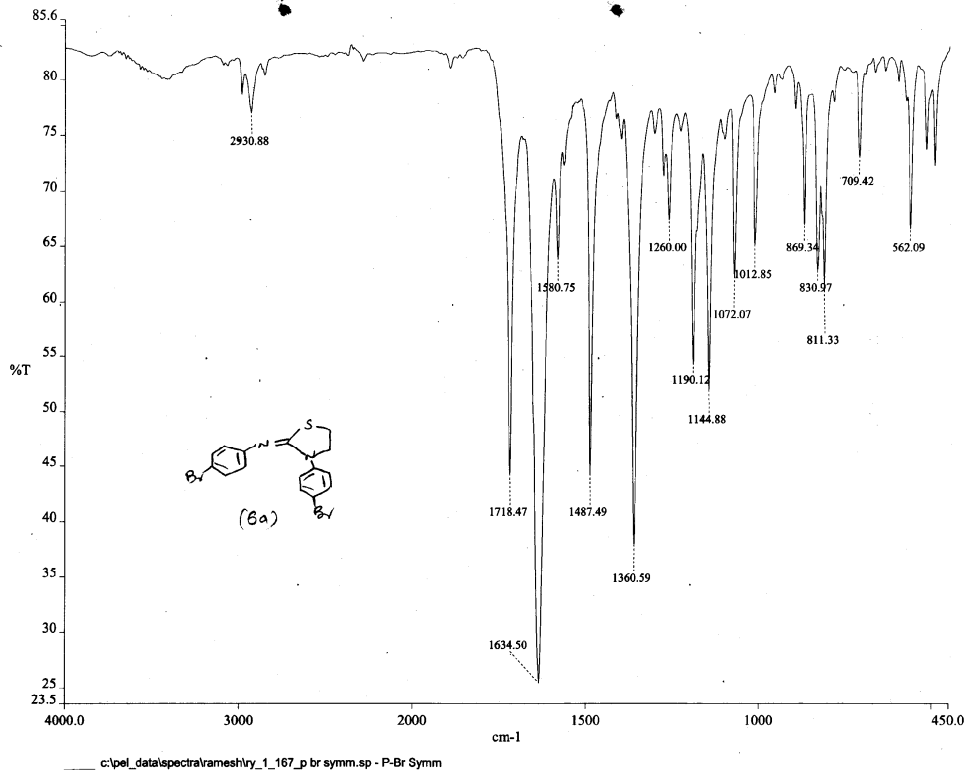
TOF MS
RAMESH_O_Cl-242 (9.981)

HAB273

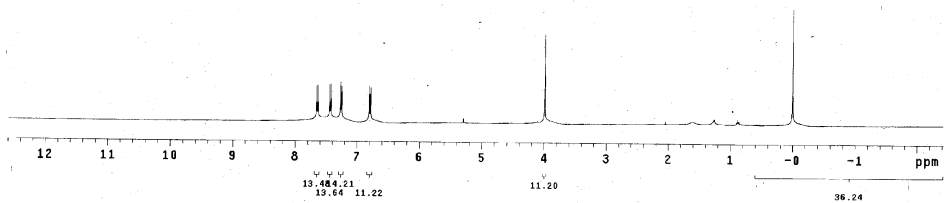
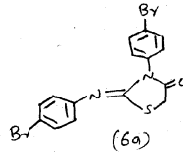
16-Jun-2008
2: TOF MS ES+
4.43e4



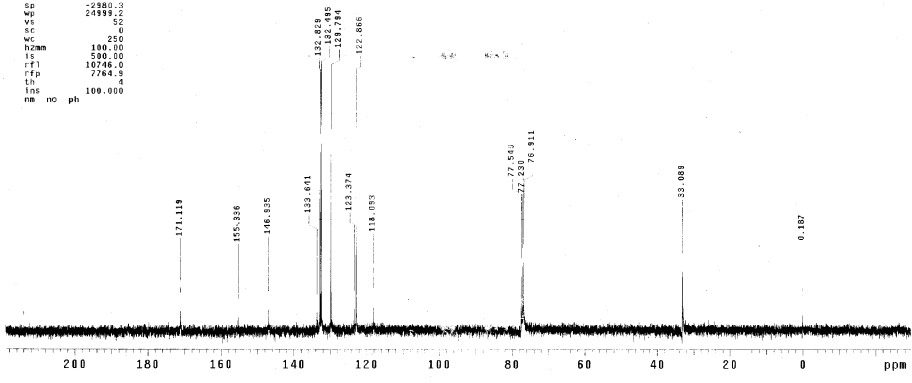
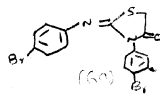
M. formulae: $C_{15}H_{10}Cl_2N_2OS$



RY_1167
:expl 'std01n
SAMPLE DEC. & VT
date Jun 3 2008 dfrq 399.853
solvent CDCl3 dm H1
file ACQUISITION exp dpwr 30
in H1 dm 0
sfra 399.853 dm min
at 1.953 dmf 200
np 2398 PROCESSING
sw 6008.0 wftlb
fb not used proc ft
bc 4 fr not used
spwr 57
pr 7.0 verr
gi 1.000 wexp
scr 0 wds
nt 32 wnt
ct 32
alock n
gain not used
ii FLAGS n
in n
dp DISPLAY y
sp -967.8
wp 6005.6
vs 31
sc 0
wc 250
hzmm 24.02
ls 561.22
rfi 968.1
rfp 0
th 22
inc 100.000
nm cdc ph



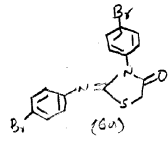
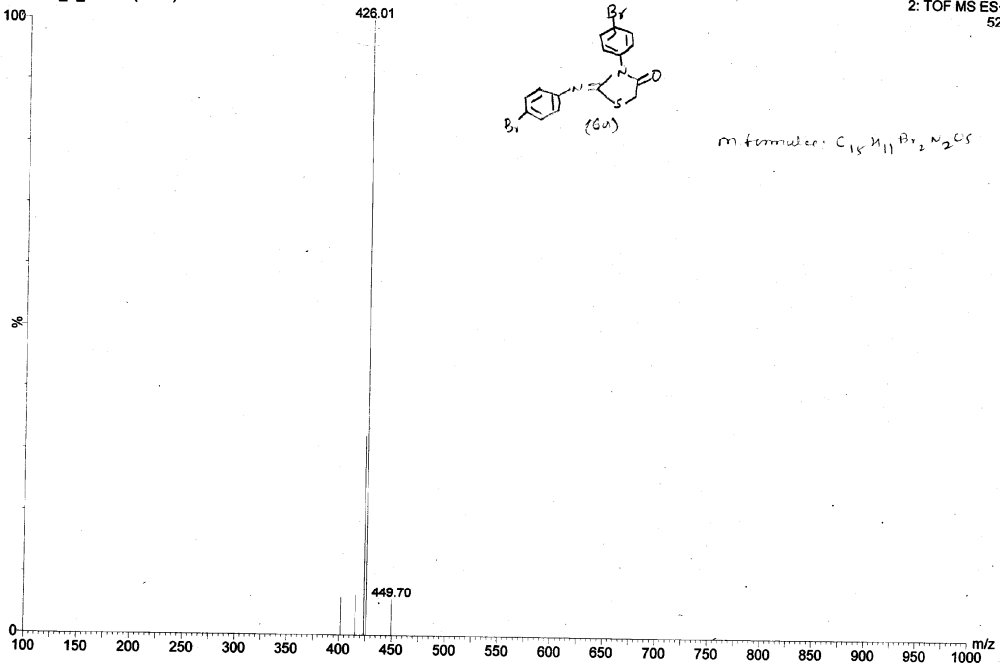
```
RY_1_167_13C
exp1 std13c
SAMPLE          DEC. & VI
date            Jun 3 2008  dfrq 399.853
solvent         CDCl3      dm  H1
file            CDC13      dm  40
ACQUISITION    exp  dpr  40
exp1            exp  dof  0
frrq           100.552  dm  yyy
in             C13      dm  w
at             1.189   dm  9900
np             53805   dm  PROCESSING
sw             25000.0 lb  1.00
fd             13800   att110
hs             16     proc  ft
lpar           61     fm  not used
pw             6.7
qt             0     wexp
lor            0     wexp
ct             2000   wds
alock          n     wnt
delin         not used
FLAGS
f1            n
in            n
dp            9
DISPLAY
sp            2380.2
wp            2499.2
vs            50
sc            0
wc            250
hzam         100.00
fs           380.00
rf           10746.0
rfp          7764.5
lh            4
ins          100.000
ms no ph
```



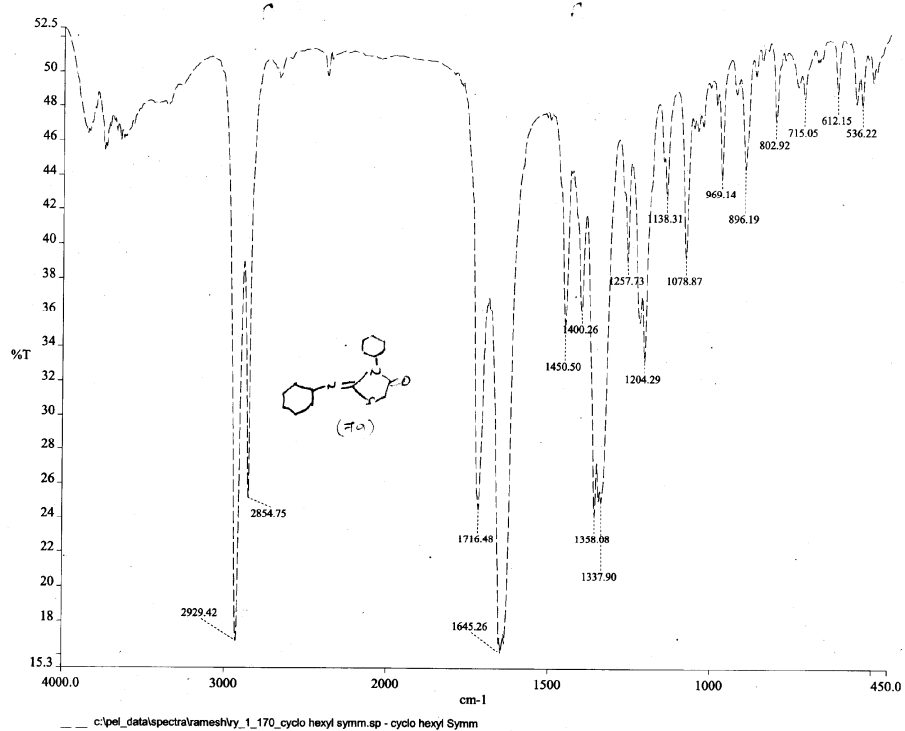
TOF MS
RAMESH_P_Br 180 (7.417)

HAB273

16-Jun-2008
2: TOF MS ES+
523



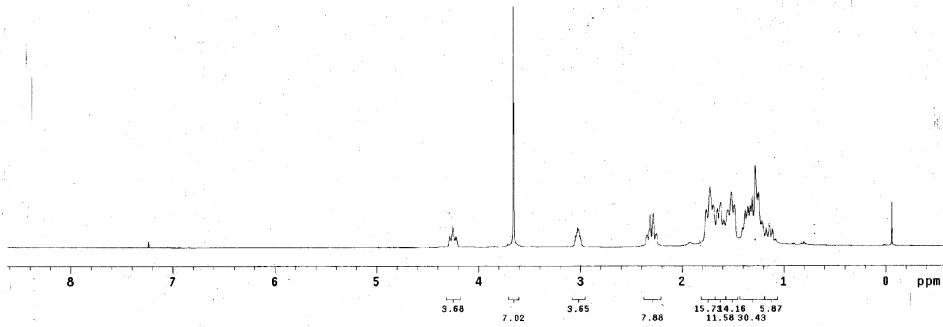
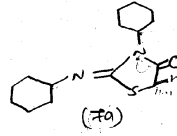
m formula: C₁₈H₁₁Br₂N₂S



RV_L170
exp1 s2pu1

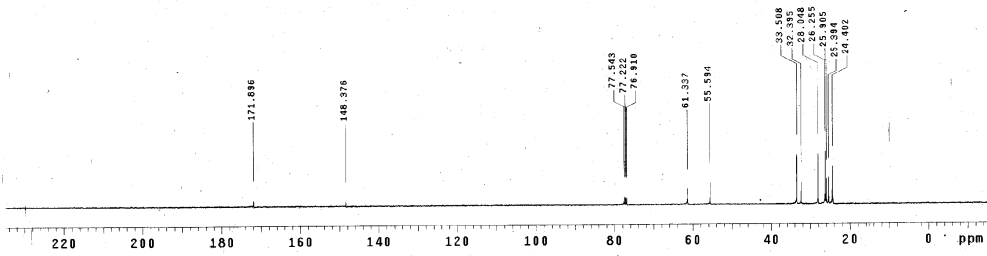
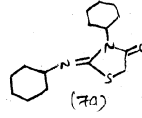
SAMPLE		SPECIAL	
date	Jan 7 2000	temp	not used
solvent	CDCl3	gain	not used
file		spin	not used
ACQUISITION		exp	1
sv	6388.8	pv90	19.700
sk	1.888	alpha	20.000
sp	25528	FLAGS	
fb	not used	fl	n
bs	4	in	n
d1	1.000	dp	y
nt	32	ns	m
ct			
TRANSMITTER		PROCESSING	
tn	M1	fb	8.10
sfrq	389.853	fn	65536
lof	382.8	sp	-239.3
tpwr	1.52	wp	3681.8
pw	9.856	rfl	3688.0
DECOUPLER		rff	2894.3
dn	C13	fp	123.4
dof	0	fp	-98.8
dm	mm	PLOT	
dwm	c	wc	250
dper	50	sc	0
dprf	15800	vs	64
		tn	20
		rm	cdc ph

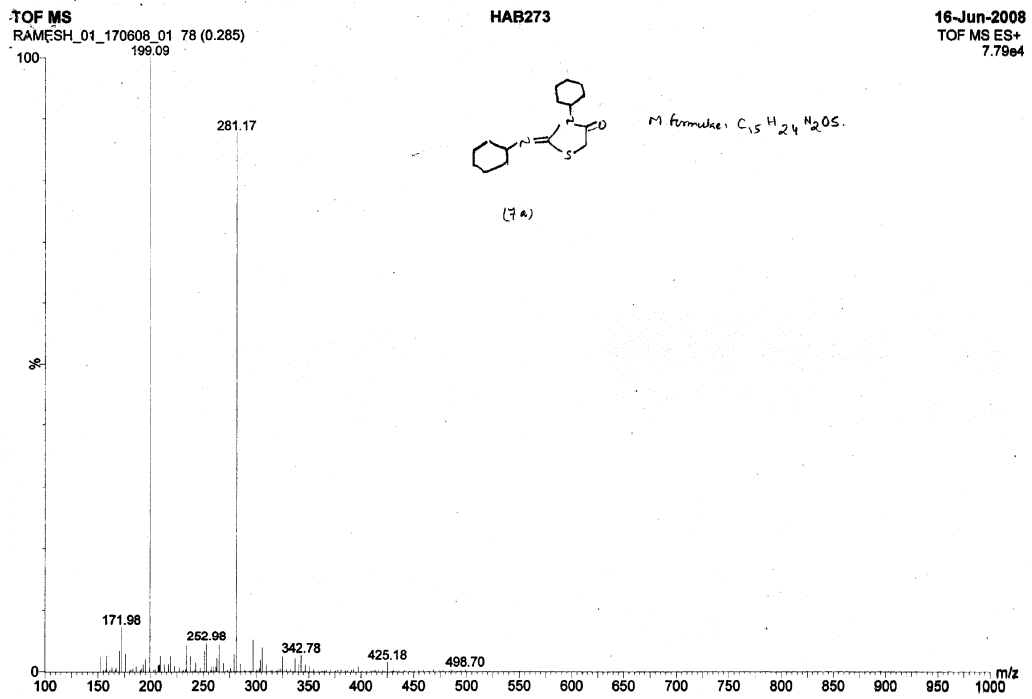
SR

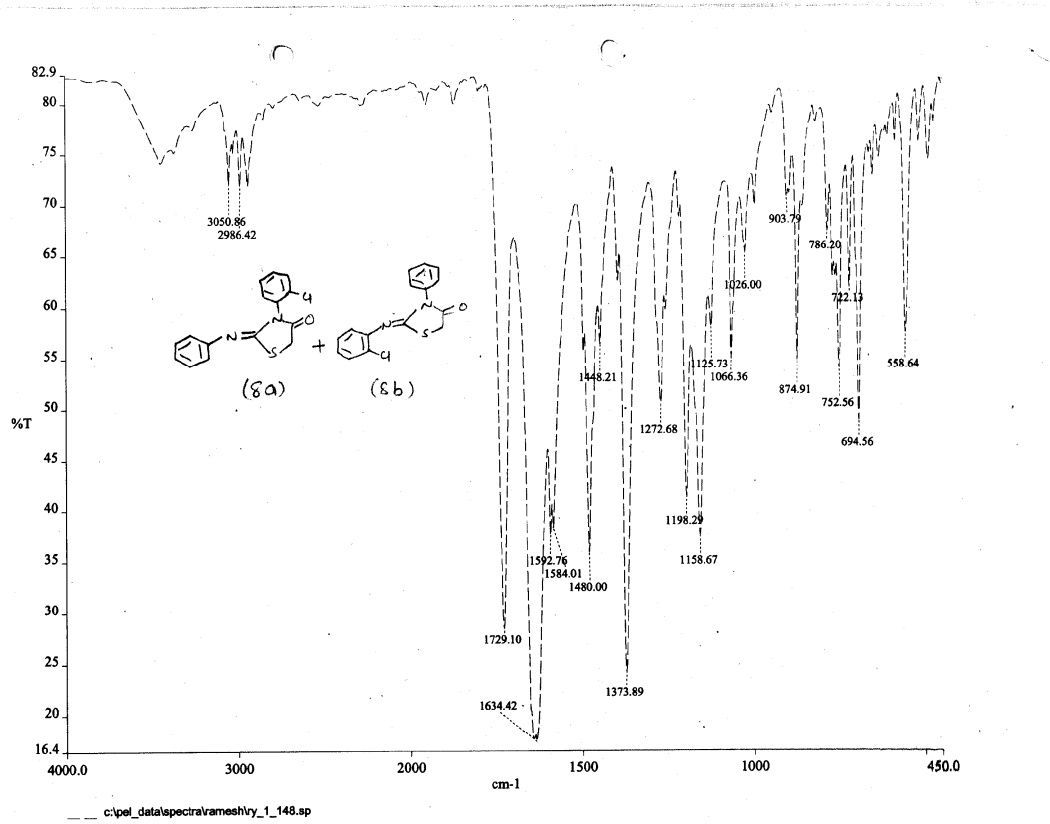


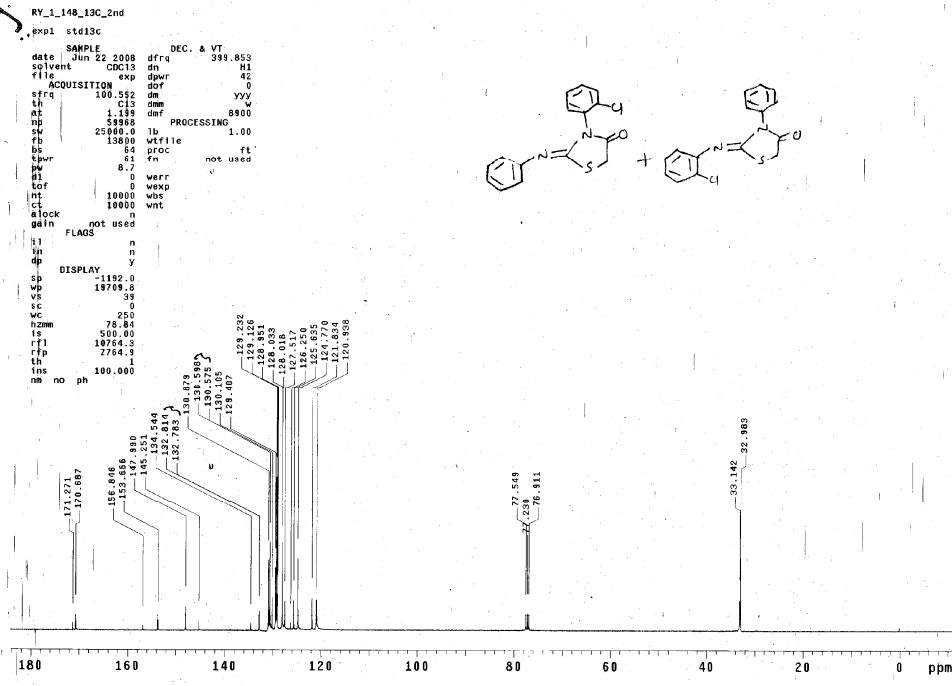
ky_1_170_13C
exp1 s2pu1

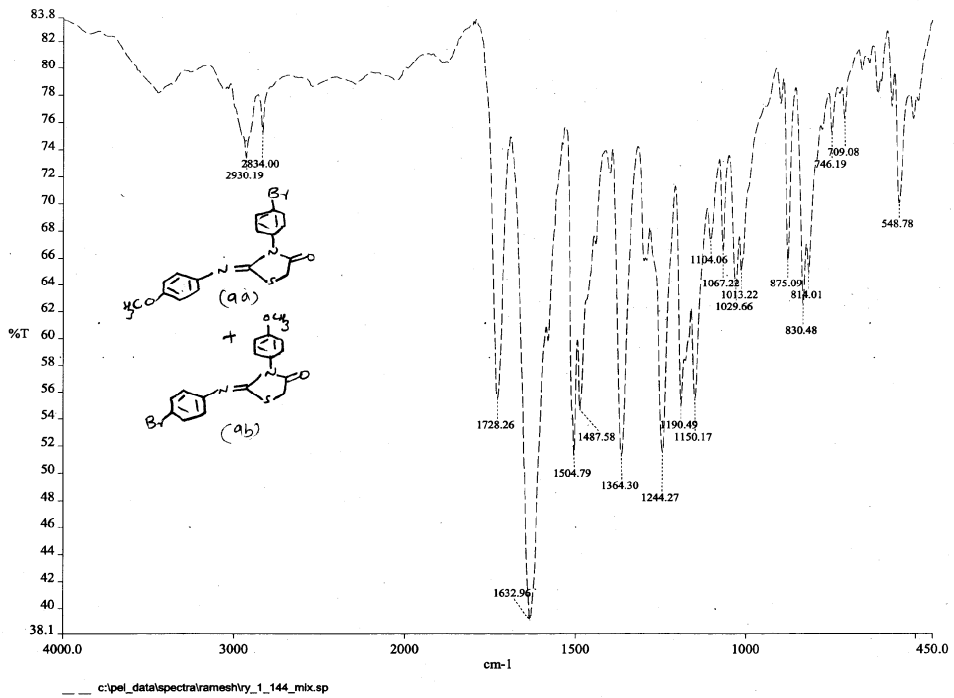
SAMPLE		SPECTAL	
date	Jun 7 2008	temp	not used
solvent	CDCl3	gain	not used
file		spin	not used
ACQUISITION	exp	hist	0.008
sw	25125.6	pu90	18.600
at	1.198	dtfa	26.000
np	60270	FLAGS	
fb	13600	fl	n
bs	16	in	n
dl	1.000	dp	y
nt	2000	hs	nm
ct	240	PROCESSING	
th		tb	2.00
tn	C13	fn	65536
sfrq	100.624	DISPLA	
torf	1536.3	sp	-1512.3
tpwr	61	wp	25124.9
pw	9.390	rfl	3276.0
DECOUPLER	H1	rfd	7264.9
dn	0	rp	-54.9
dor	0	lp	-271.4
dm	yyv	PLOT	
scm	w	wc	250
dpwr	42	sc	0
dof	8800	vs	13
th		th	1
nm	no	ph	



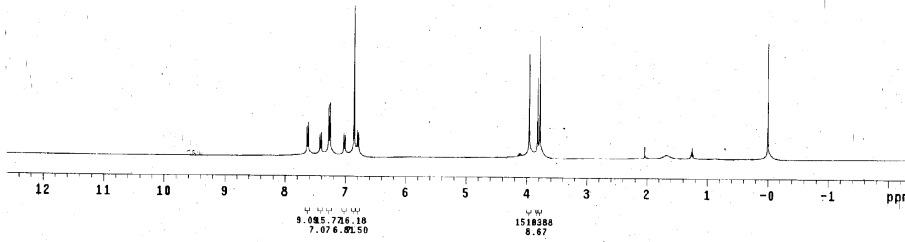
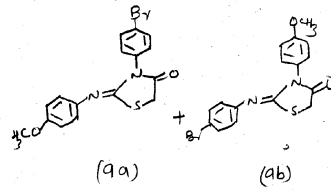








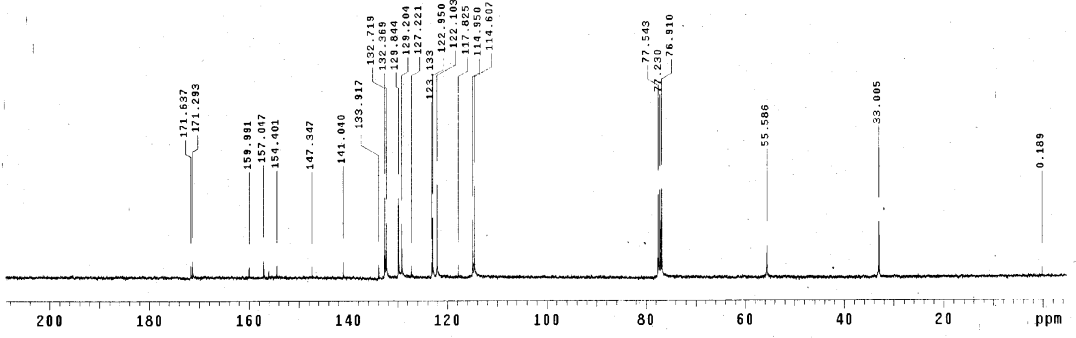
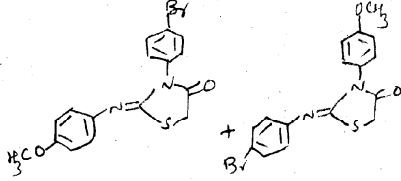
```
RY_1144_mix
exp1 ,stdih
SAMPLE          DEC. & VT
date            Jun  9 2008  dfrq      319.023
solvent         CDCl3    dn          H1
file            exp      dpwr        30
ACQUISITION    exp      dof         0
sfrq           399.653  de          nmh
kn             1.983    dm         200
ns             23936    df         200
np             6096.0   wfile        ft
sq             not used proc        not used
sb             4
tpwr           57
pw             7.0      werr
sl             1.000    wexp
tof            0        wbs
ms             32      wnt
ct             32
elock          n
gain           not used
f1             -n
f2             n
f3             y
DISPLAY
sp             -300.1
wp             6005.6
vc             39
sc             0
wc             250
hznm          24.02
f1             1130.00
f2             360.5
rfp            20
th             100.000
nm             cdc ph
```

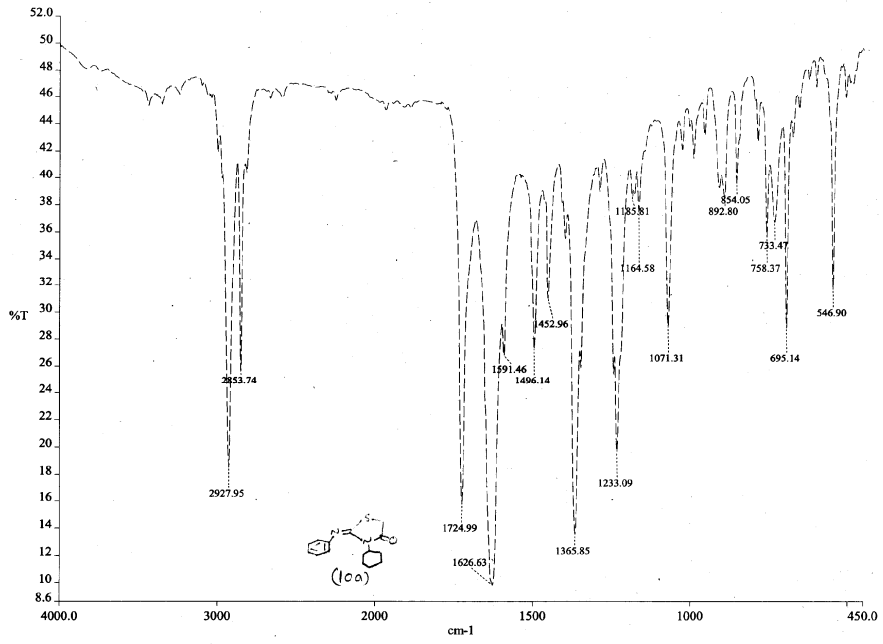


Ry-144-mix-13c

exp1 s2pu1

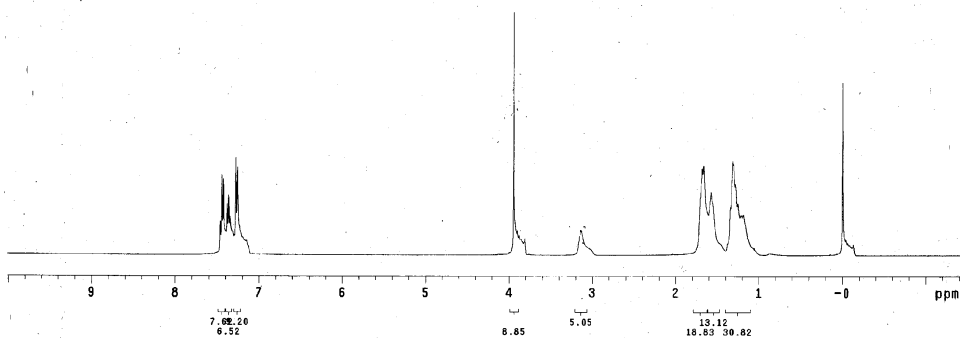
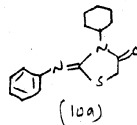
SAMPLE		SPECIAL	
date	Jun 4 2008	temp	not used
solvent	CDCl3	ggin	not used
file		spin	not used
ACQUISITION		hst	0.008
sw	25125.6	pw90	18.600
et	1.189	alpha	20.000
np	60270	FLAGS	
fb	13800	fl	n
bs	10	in	n
d1	1.000	dp	y
nt	6000	hs	nn
ct	6000	PROCESSING	
IRANSMTTLER	id	2.00	
tn	C13	fn	65536
strq	100.554	DISPLAY	
tor	1598.3	sp	-486.3
tpwr	61	wp	21492.7
pw	9.300	rfl	9274.9
DECOUPLER		rfp	7784.9
dn	H1	rp	-37.7
dof	0	lp	-397.2
da	yy	W	
dmm	yy	wc	250
dpwr	42	sc	0
def	0300	vs	13
		th	2
		nm	no ph



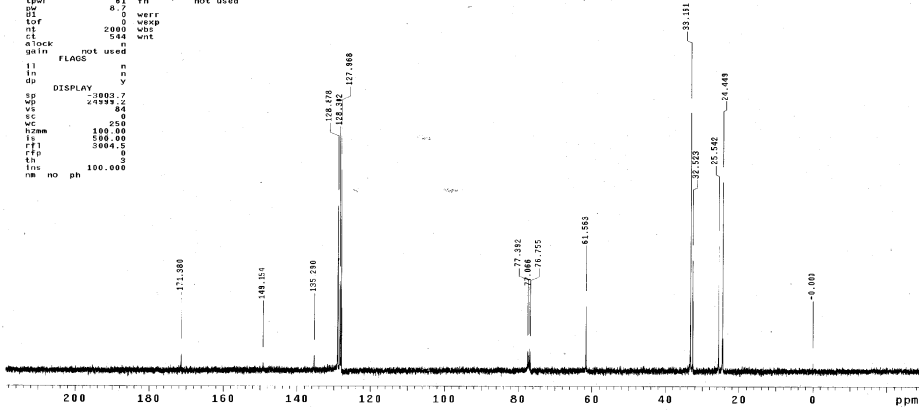
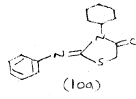


c:\pel_data\spectra\ameshry_1_137.sp - TZ


```
RY_1137
exp1 stdih
SAMPLE
date May 19 2008 dfrq DEC. A VT 389.853
solvent CDC13 dn M1
file exp dpar 30
ACQUISITION dof 0
sfreq 389.853 dm rnm
tn H1 dm
at 1.389 dmf 200
np 2356 PROCESSING
sw 6008.0 wtfile ft
fb not used proc ft
bb 4 fn not used
lpwr 57
de 7.0 werr
H1 1.000 wexp
top 0 wbs
nt 32 wnt
ct 32
a lock n
gain not used
FLAG n
il n
in n
sp Y
DISPLAY
sb -582.1
wp 4984.8
ve 60
se 0
wf 250
hzam 18.34
fs 1901.11
rfi 988.8
rfg 0
ths 5
nm cdc ph
```



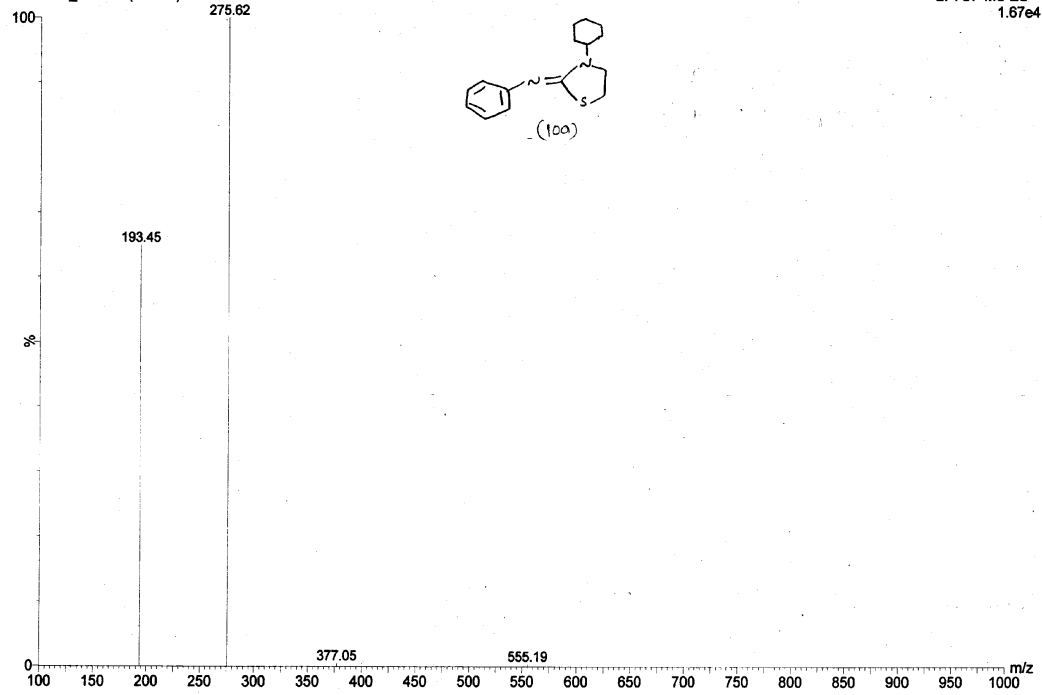
```
RV_L_137_130
expl st133c
SAMPLE
date May 20 2008      dfrs      see asc
solvent CDC13      dn      H1
file      180.552      dprv      45
ACQUISITION exp      dof      99
sfrs      1.130      dm      0
ln      1.013      dmm      8900
ql      2880      dnf      PROCESSING
sp      25000.0      lb      1.00
fb      13800      wffile
ls      32      proc      ft
tprc      81      fd      not used
dy      0
dl      0      wevr
tof      0      wekp
nt      2800      wsc
clock      544      wnt
goin      not used
ii      n
dp      y
DISPLAY
sp      3003.7
wp      2433.2
vs      0.4
s      0
wc      250
norm      100.00
ls      500.00
rfi      3004.5
rff      0
th      2
ins no ph 100.000
```

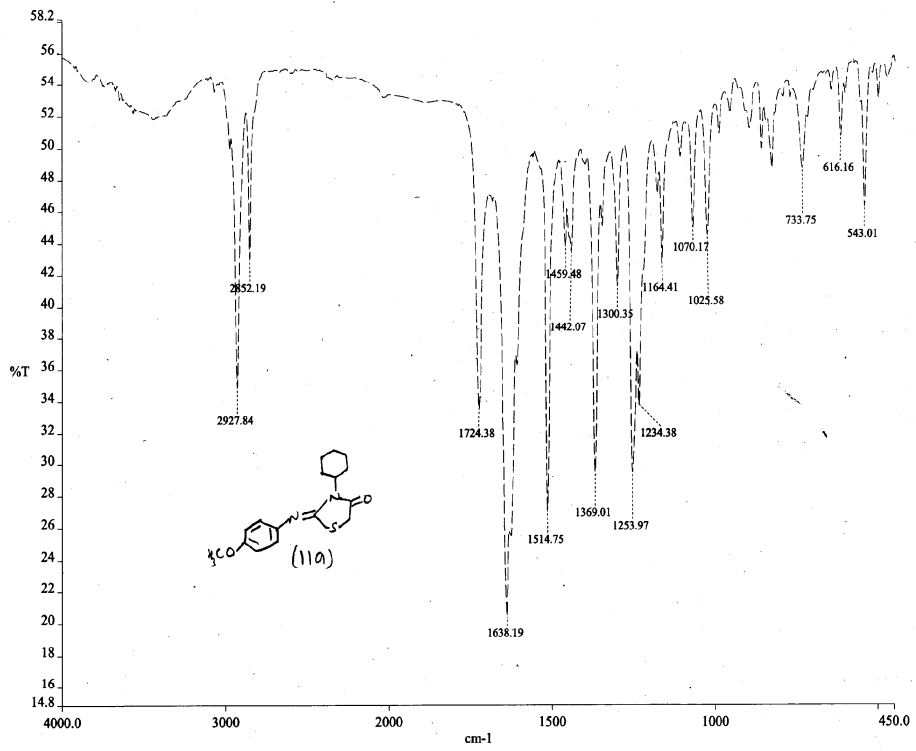


TOF MS
RAMESH_07 275 (11.442)

HAB273

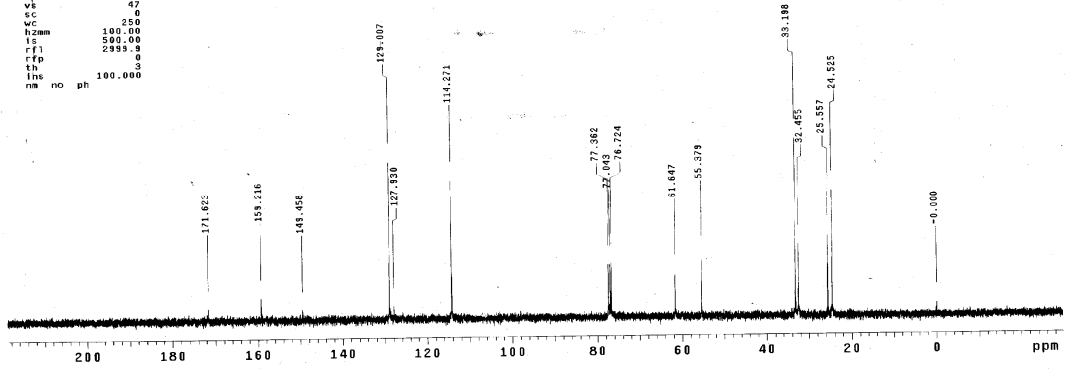
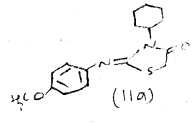
19-Jun-2008
2: TOF MS ES+
1.67e4





c:\pel_data\spectra\amesh\ry_1_141.sp - TZ

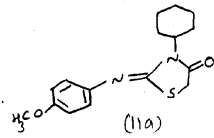
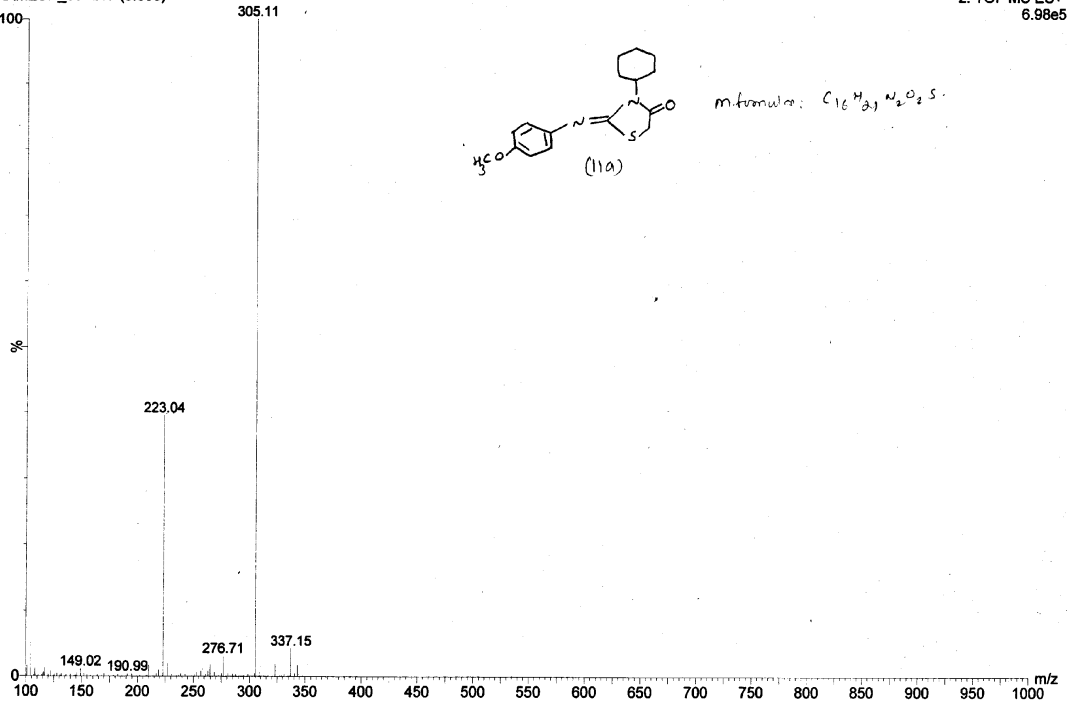

```
RV_1_141_13C
exptl std13c
SAMPLE
date May 20 2008 dfrq 399.853
solvent CDCl3 dn H1
file exp dpr 52
ACQUISITION dof 0
dfrq 100.552 ds yyy
tn C13 dnm w
at 1.139 dmf 8800
np 59968 PROCESSING 1.00
sw 25000.0 lb
fb 1380.0 wfile
bs 32 proc not used
tpr 6.1 tn
dvr 8.7 werr
d1 0
tof 0 wexp
nt 2000 wds
ct 980 wnt
alock n
gain not used
FLAGS
it n
in n
dp n
SP DISPLAY y
sp 2999.1
wp 2999.2
ve 47
sc 0
wc 250
hzmm 100.00
is 500.00
rf1 2999.8
rff 0
tn 5
ins 100.000
nm no ph
```



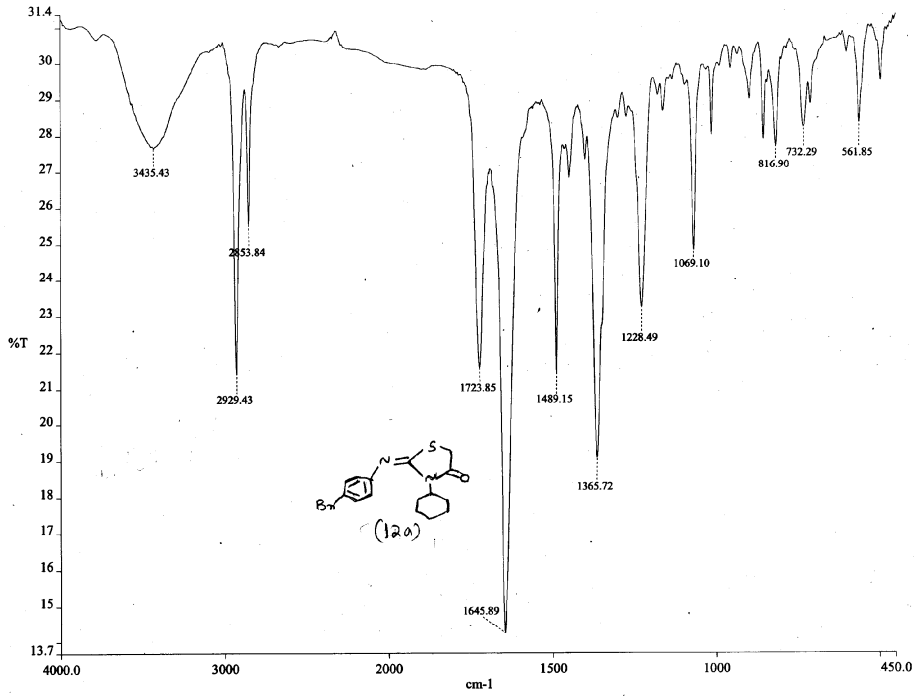
TOF_MS
RAMESH_08 217 (9.039)

HAB273

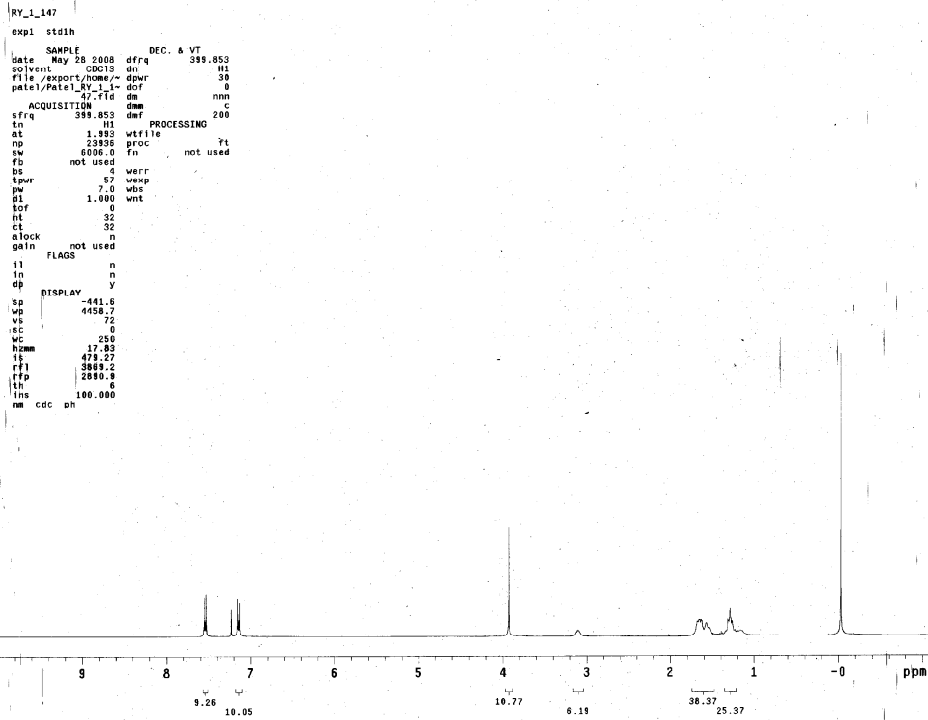
19-Jun-2008
2: TOF MS ES+
6.98e5



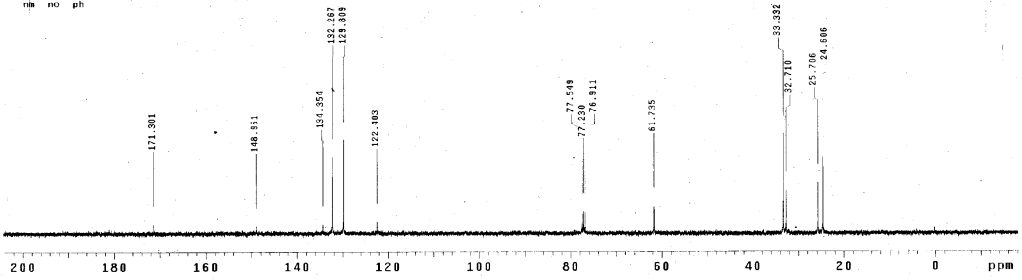
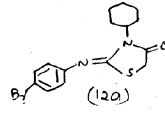
molecular: $C_{16}H_{21}N_2O_2S$



c:\pel_data\spectra\rameshry_1_147.sp



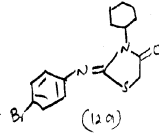

```
RV_1_147_19C
expl stat3c
SAMPLE DEC. & VT
date May 30 2008 dfrq 399.853
solvent CDCl3 dn 42
file ACQUISITION 819 dpr 0
tn 1.133 ds yyv
et C13 dnm 890
np 59888 in PROCESSING 1.00
sw 25000.0 lb
fb 13800 wffile ft
ds 16 utoc
tpwr 81 fn not used
pw 8.7
cl 0 werr
rt 3000 wexp
ci 1040 wnt
elock n
gain not used
FLAG n
in n
dp Y
DISPLAY
sp 1826.8
ws 22370.3
vs 28
sc 0
wc 250
h2m 89.48
ls 500.00
rfi 10746.3
fip 7764.3
th 2
ins 100.000
nm no ph
```



TOF MS
RAMESH_10 357 (14.861)

HAB273

19-Jun-2008
2: TOF MS ES+
1.40e6



molecular: $C_{15}H_{17}BrN_2O_2$

