

Electronic Supplementary Information:

Table 1: Gaschromatographical method to determine sulphur compounds in diesel oils

Device:	Varian CP 3800 / PFPD	Column:	CP-Sil 8 CB
Detector:	PFPD	Length:	25 m
Split:	variabel (20 - 60)	Inner Diameter:	0,32 mm
Carrier Gas:	H ₂	Film Thickness:	0,52 µm
Injector:	200 °C		

Temperature Program:

1 min 50 °C isotherm, ramp 10 K/min to 220 °C, 5 min 220 °C isotherm

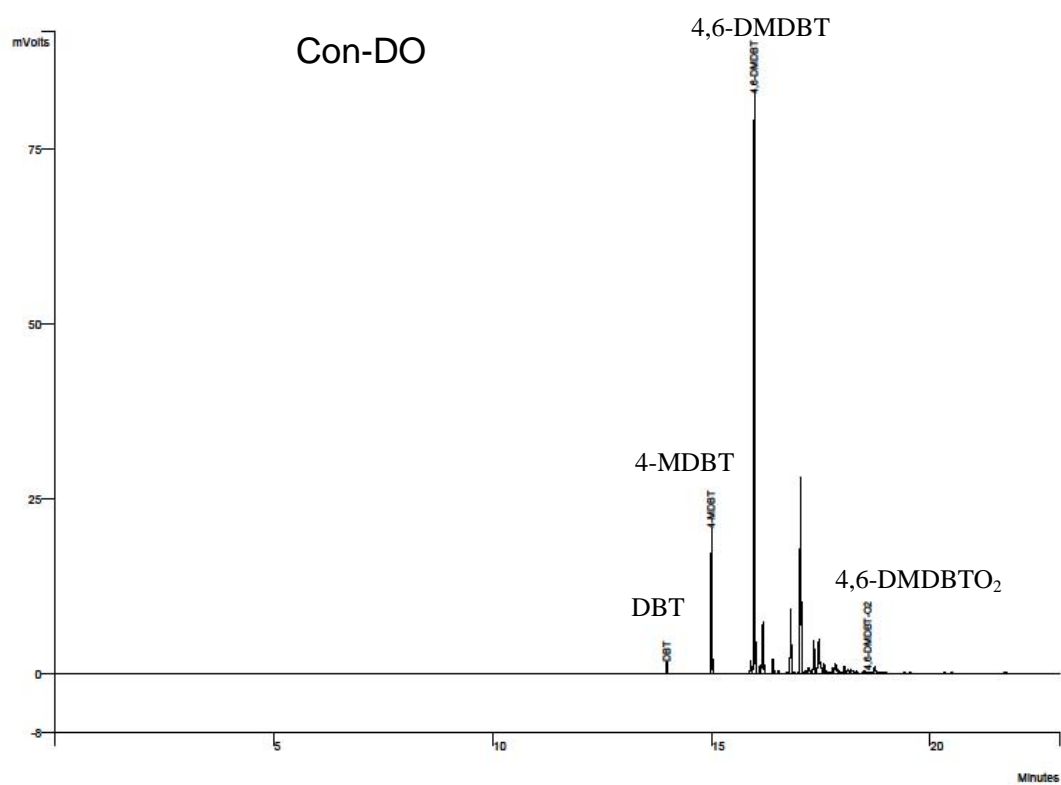


Fig. 1: Gaschromatogramm of Con-DO

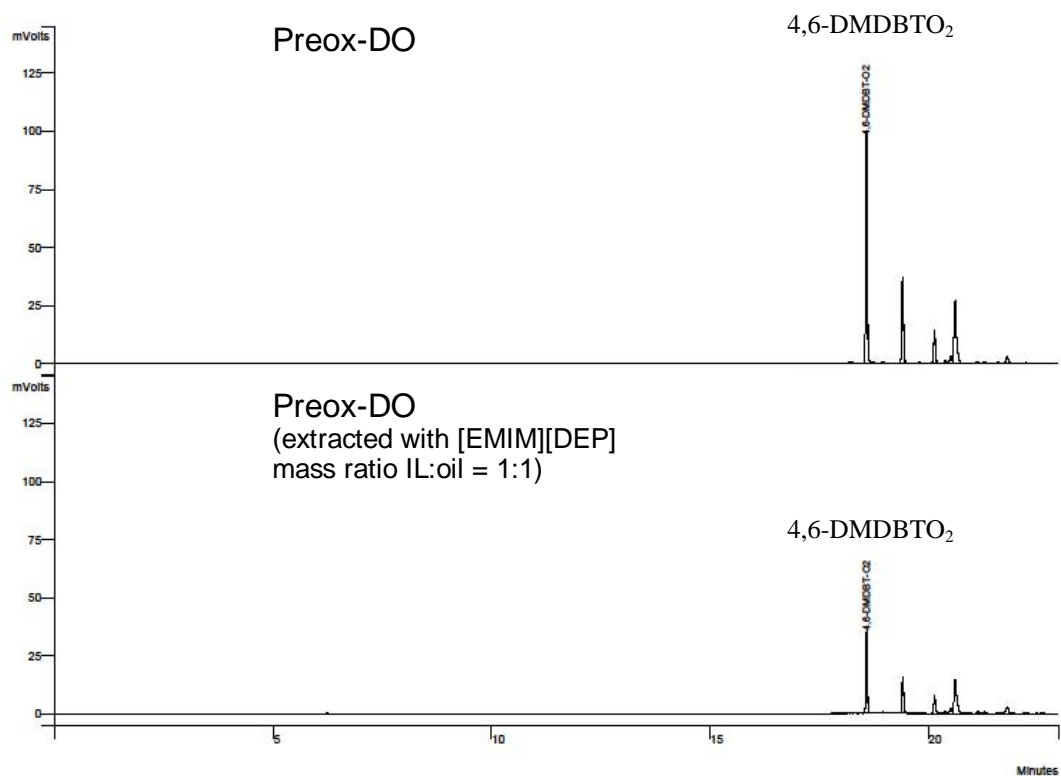


Fig. 2: Gaschromatogramm of Preox-DO and Preox-DO, extracted with [EMIM][DEP] (conditions: mass ratio IL:oil = 1:1, 25°C, 15 min)