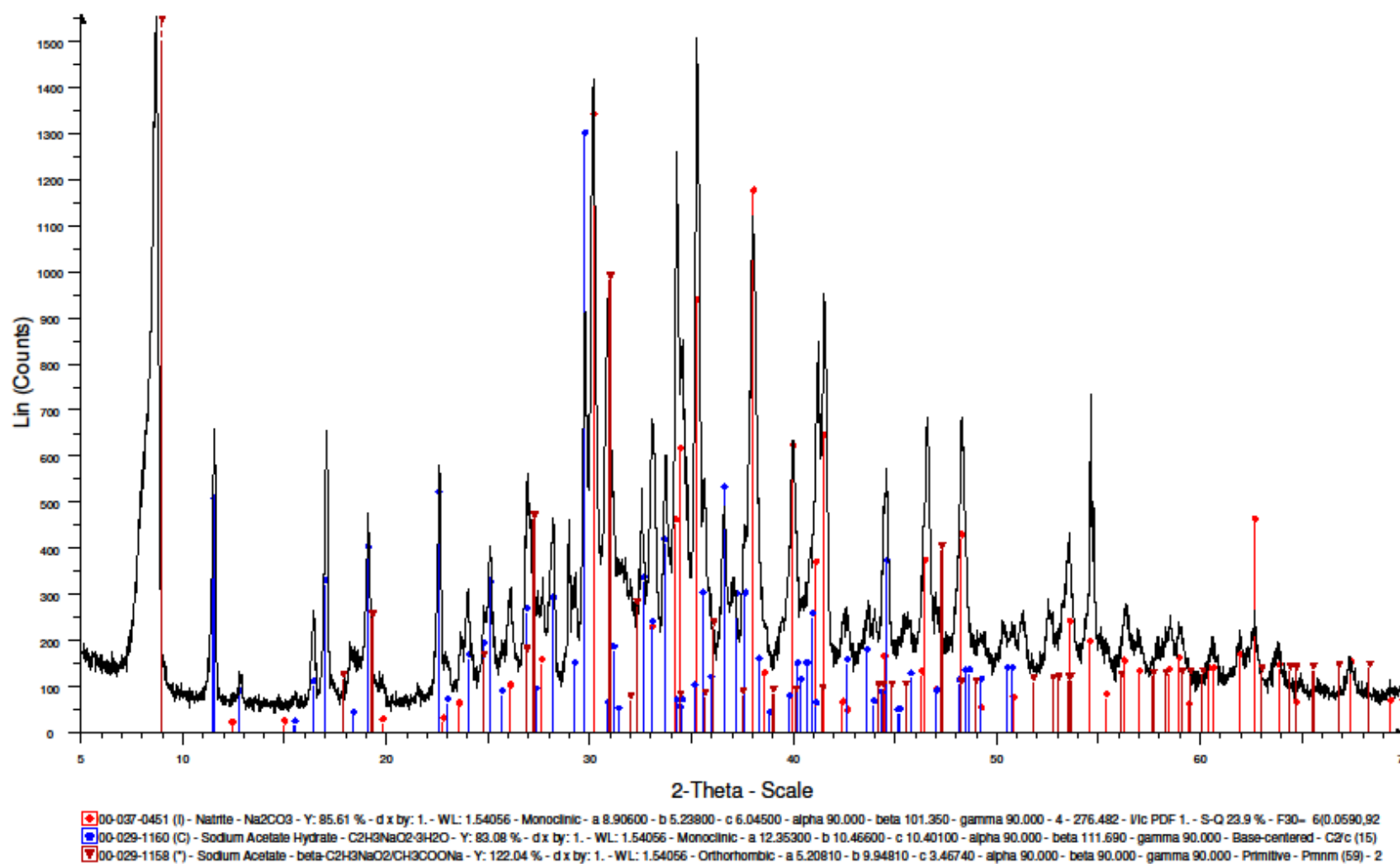


XRD SCAN OF DRIED AQUEOUS PHASE RESIDUE FROM COAL SHOWING THE PRESENCE OF SODIUM CARBONATE, SODIUM ACETATE AND SODIUM CHLORIDE



XRD SCAN OF DRIED AQUEOUS PHASE RESIDUE FROM LIGNIN SHOWING THE PRESENCE OF SODIUM CARBONATE AND SODIUM ACETATE