

Electronic Supporting Information

Cellulase Immobilized Mesoporous Silica Nanocatalysts for Efficient Cellulose-to-Glucose Conversion

Renee Han-Yi Chang, Jen Jang and Kevin C.-W. Wu*

Department of Chemical Engineering, National Taiwan University, No. 1, Sec. 4,

Roosevelt Road, Taipei, 10617 Taiwan

Tel: +886-2-33663064; E-mail: kevinwu@ntu.edu.tw

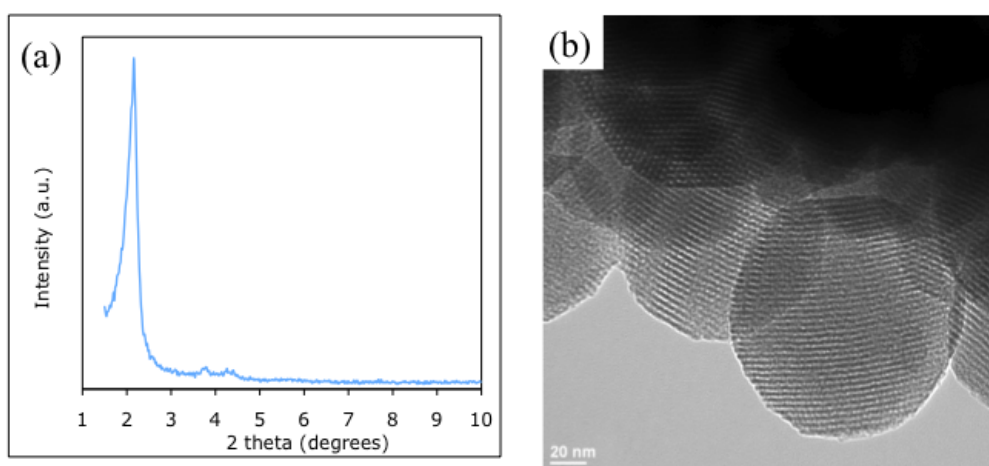


Fig. S1. (a) A low-angle XRD pattern and (b) a TEM image of SPMSN indicate that SPMSN exhibited highly ordered mesostructure.

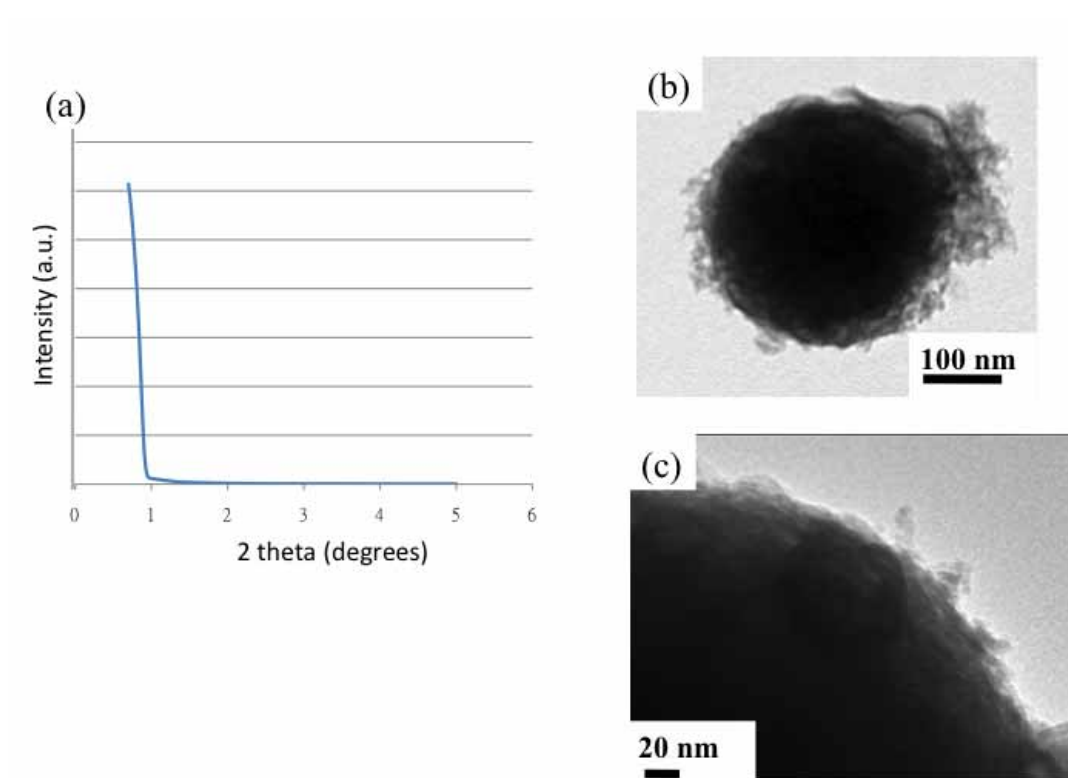


Fig. S2. (a) A low-angle XRD pattern of LPMSN indicate that LPMSN did not exhibit an ordered mesostructure. (b and c) TEM images of LPMSN indicated that the particle size of LPMSN was too large to see the porous structure.