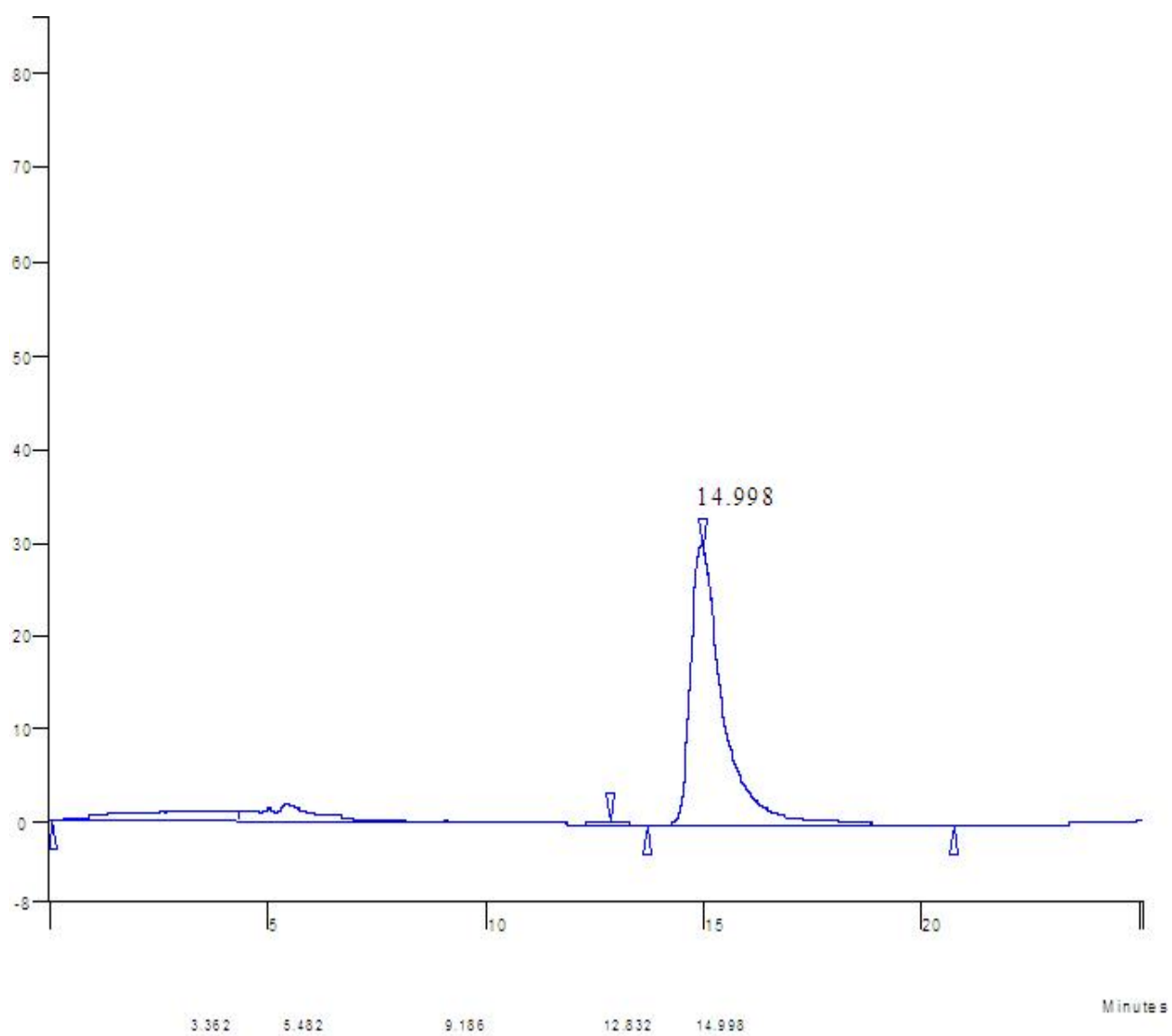
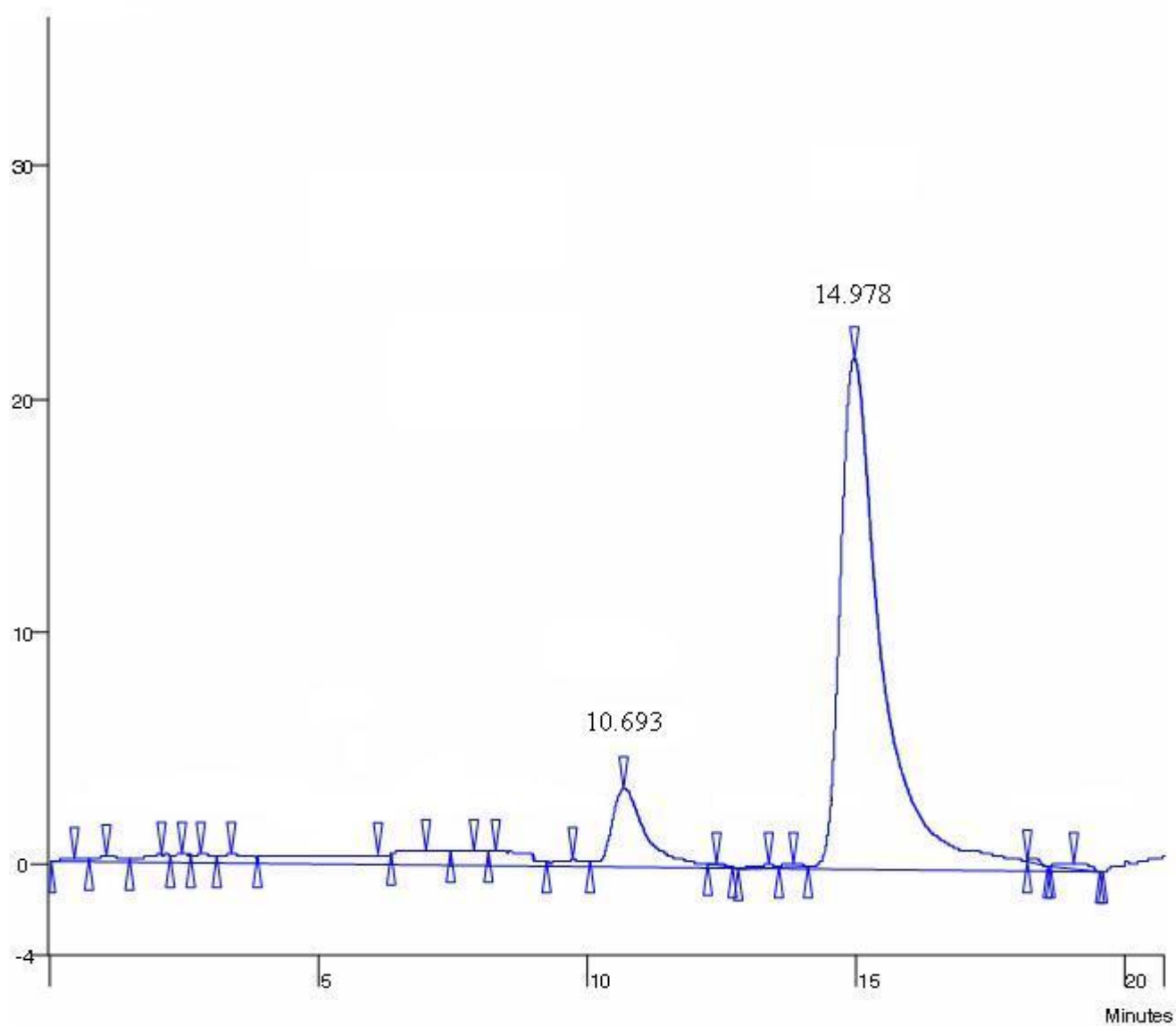


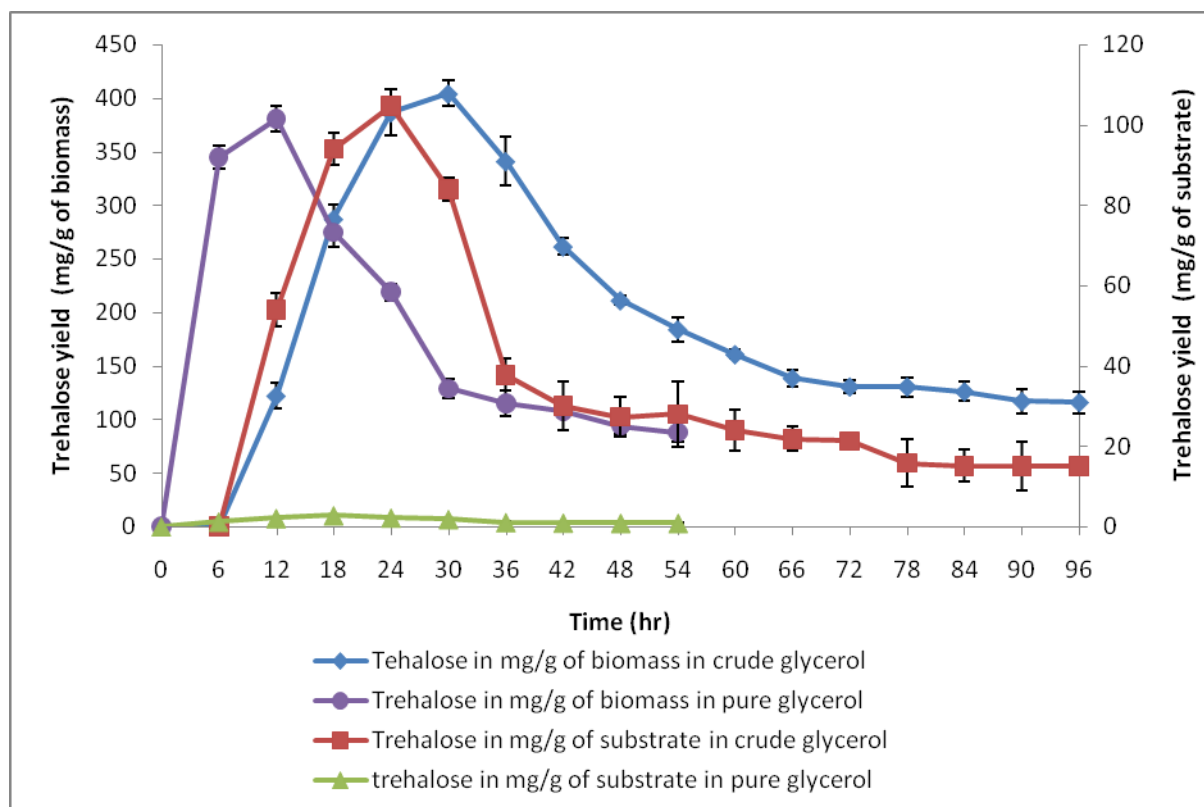
Supplementary Fig 1a: HPLC peak of standard sample of lactic acid.



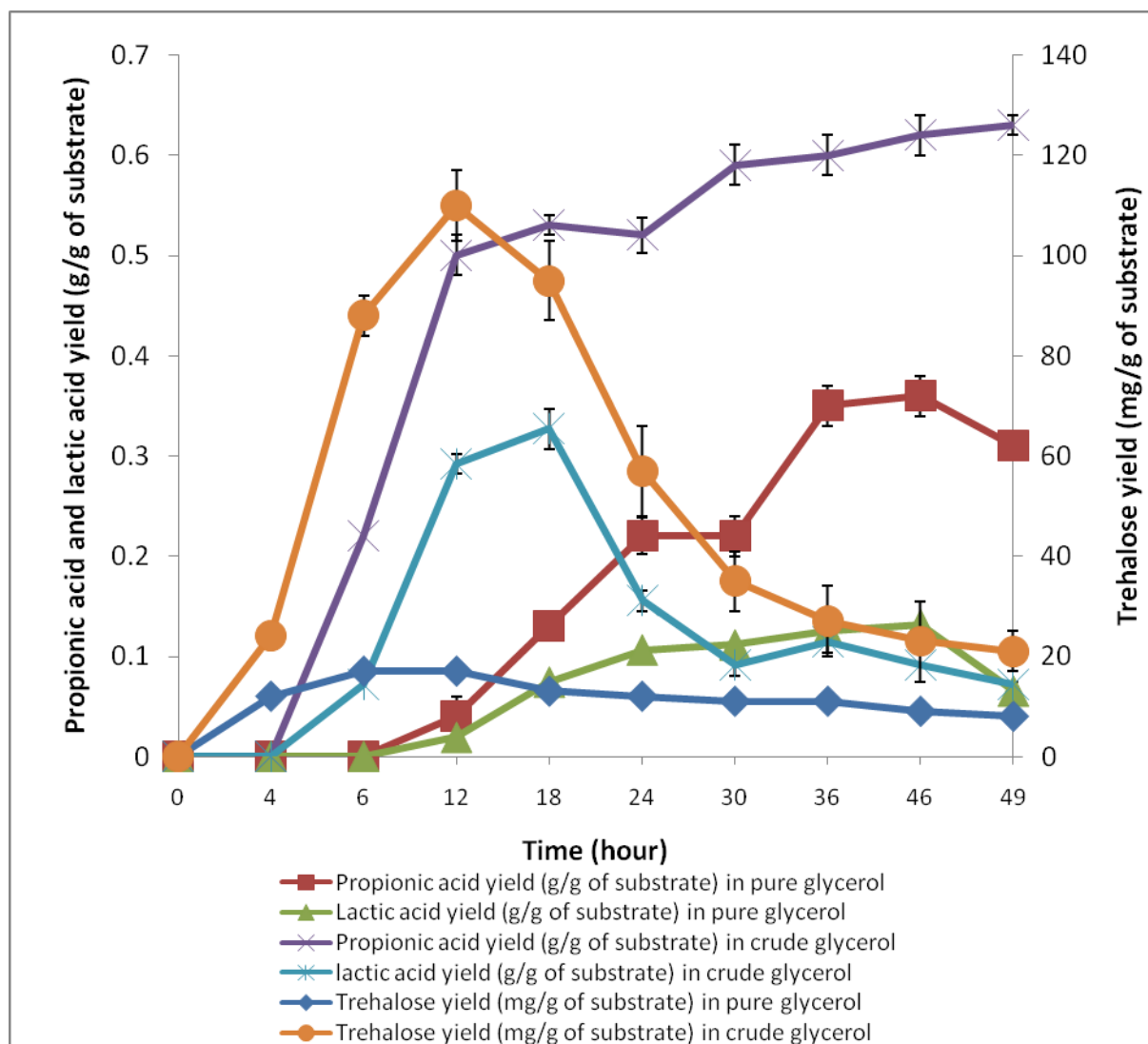
Supplementary Fig 1b: HPLC peak of standard sample of propionic acid



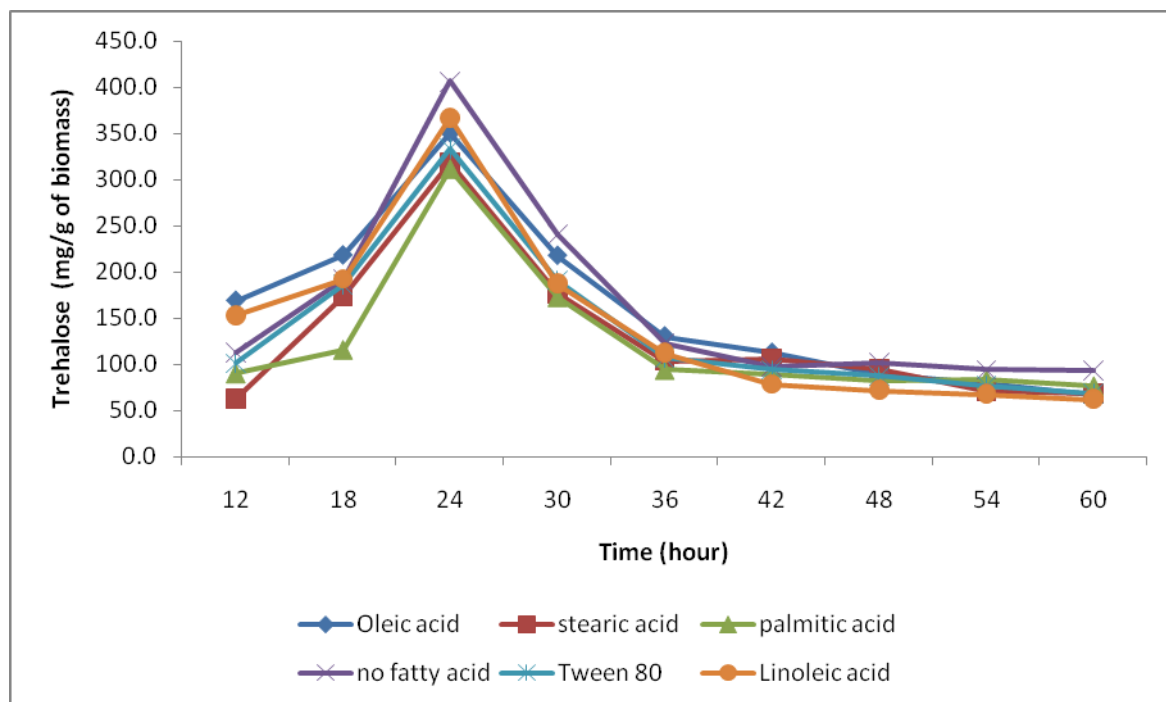
Supplementary Fig 1c: HPLC peak of fermentation broth containing propionic acid and lactic acid.



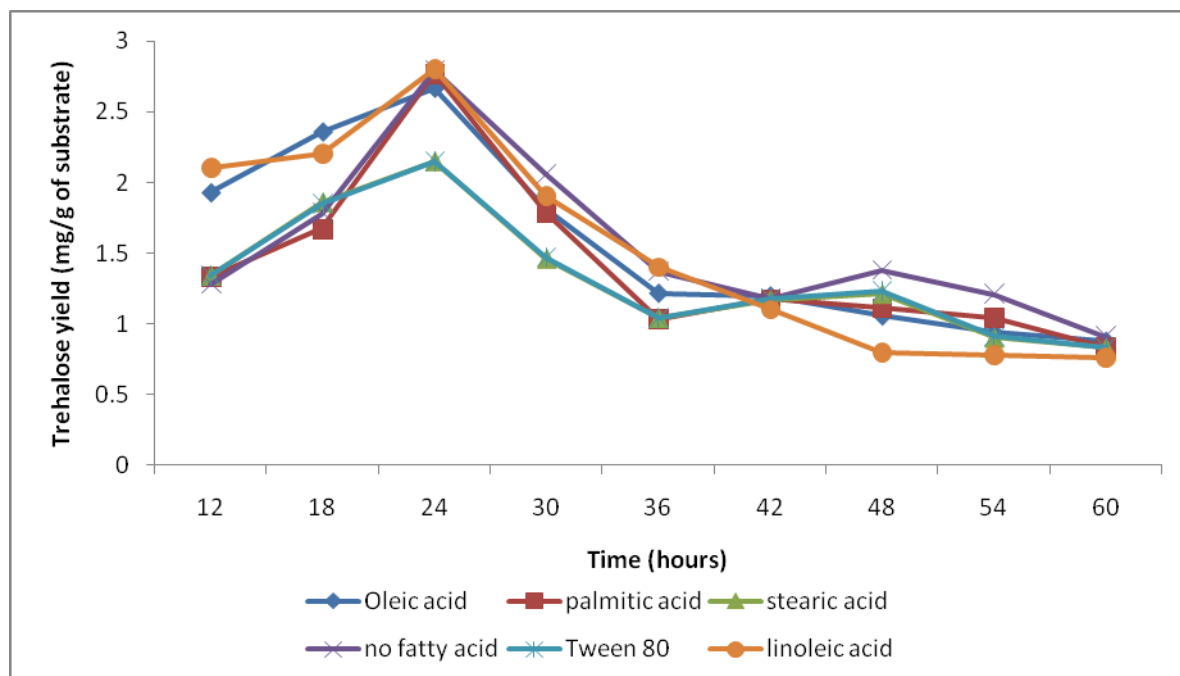
Supplementary Fig 2: Comparison of trehalose yields with respect to biomass and substrate consumed with crude and pure glycerol media in static flask conditions



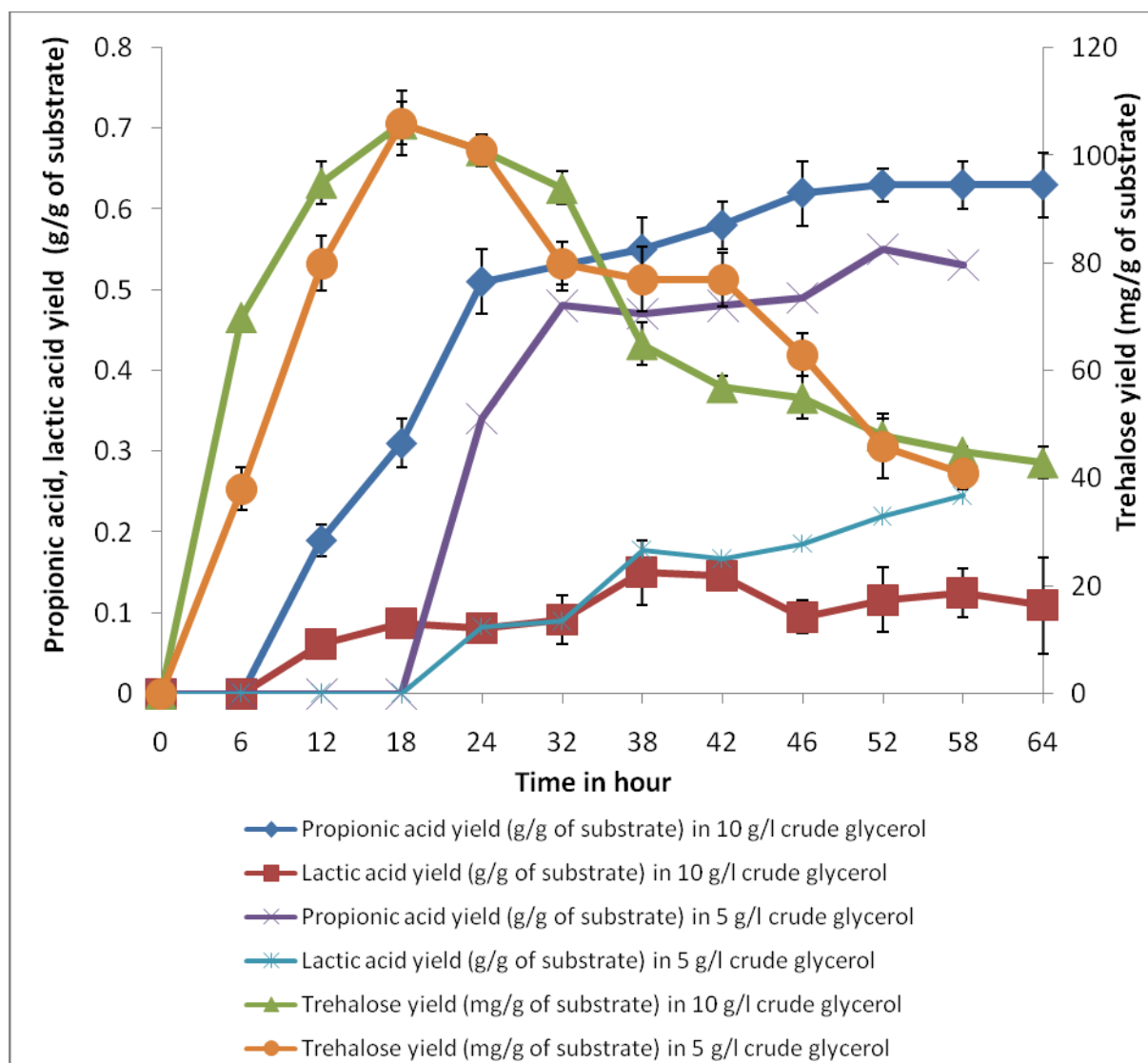
Supplementary Fig 3: Comparison of yields of trehalose, propionic acid and lactic acid with pure and crude glycerol media (20 g/l) in batch reactor.



Supplementary Fig 4a: Effects of various fatty acids on trehalose yield with respect to biomass



Supplementary Fig 4b: Effects of various fatty acids on trehalose yield with respect to substrate consumed



Supplementary Fig 5: Comparison of yields of trehalose, propionic acid and lactic acid with 10 and 5 g/l of crude glycerol media.