

## Supplementary Information

### Kinetic analysis of 4-isopropylphenol hydrogenation over activated carbon-supported rhodium catalysts in supercritical carbon dioxide solvent

Norihito Hiyoshi, Osamu Sato, Aritomo Yamaguchi, Chandrashekhar V. Rode and Masayuki Shirai\*

Research Center for Compact Chemical System, National Institute of Advanced Industrial Science and Technology (AIST), 4-2-1 Nigatake, Miyagino, Sendai, 983-8551, Japan

#### TEM image

Figure S1 shows a TEM image of the Rh/C catalyst. The average size of rhodium particles was 3.4 nm, which was determined using the following equation,

$$d_{\text{TEM}} = \frac{\sum(n_i d_i^3)}{\sum(n_i d_i^2)}.$$

Here,  $n_i$  and  $d_i$  denotes number and diameter of rhodium particles, respectively.

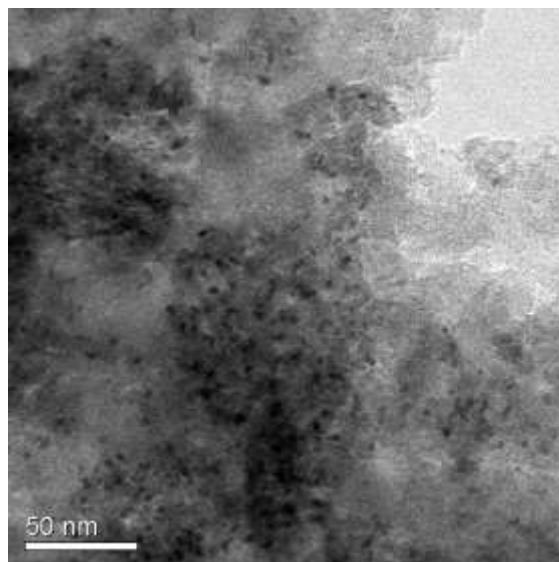


Figure S1. TEM image of Rh/C