

Supplementary material

Table of contents:

Figure S1. Pore size distributions of carbon supports

Figure S2. XPS profiles of carbon supports (from reference 22)

Figure S3. Deconvolution of C(1s) peak of carbon supports (from reference 22)

Figure S4. HRTEM images of catalysts Pd(TPP)/MB-H₂O₂ (a) and Pd(TOP)/MB-H₂O₂ (b) (adapted from reference 22)

Figure S5. HRTEM images and histograms of catalysts Pd(TPP)/MB-1500 (a) and Pd(TOP)/MB-1500 (b) (adapted from reference 2)

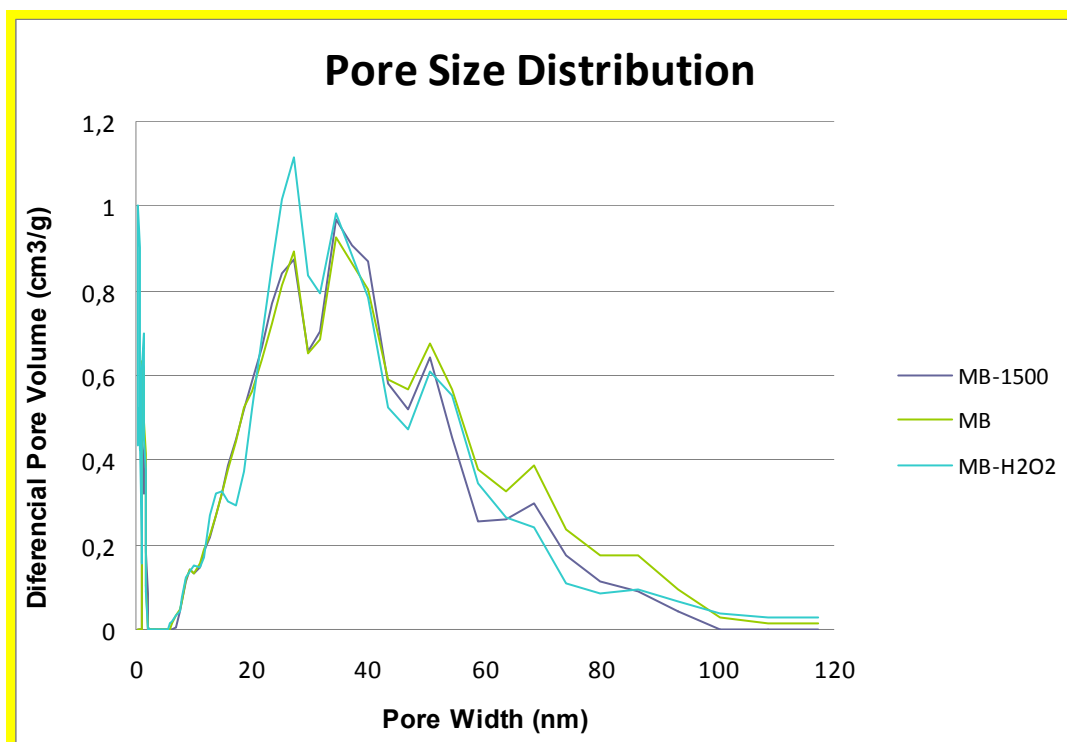


Figure S1. Pore size distributions of MB, MB-1500 and MB-H₂O₂ carbons.

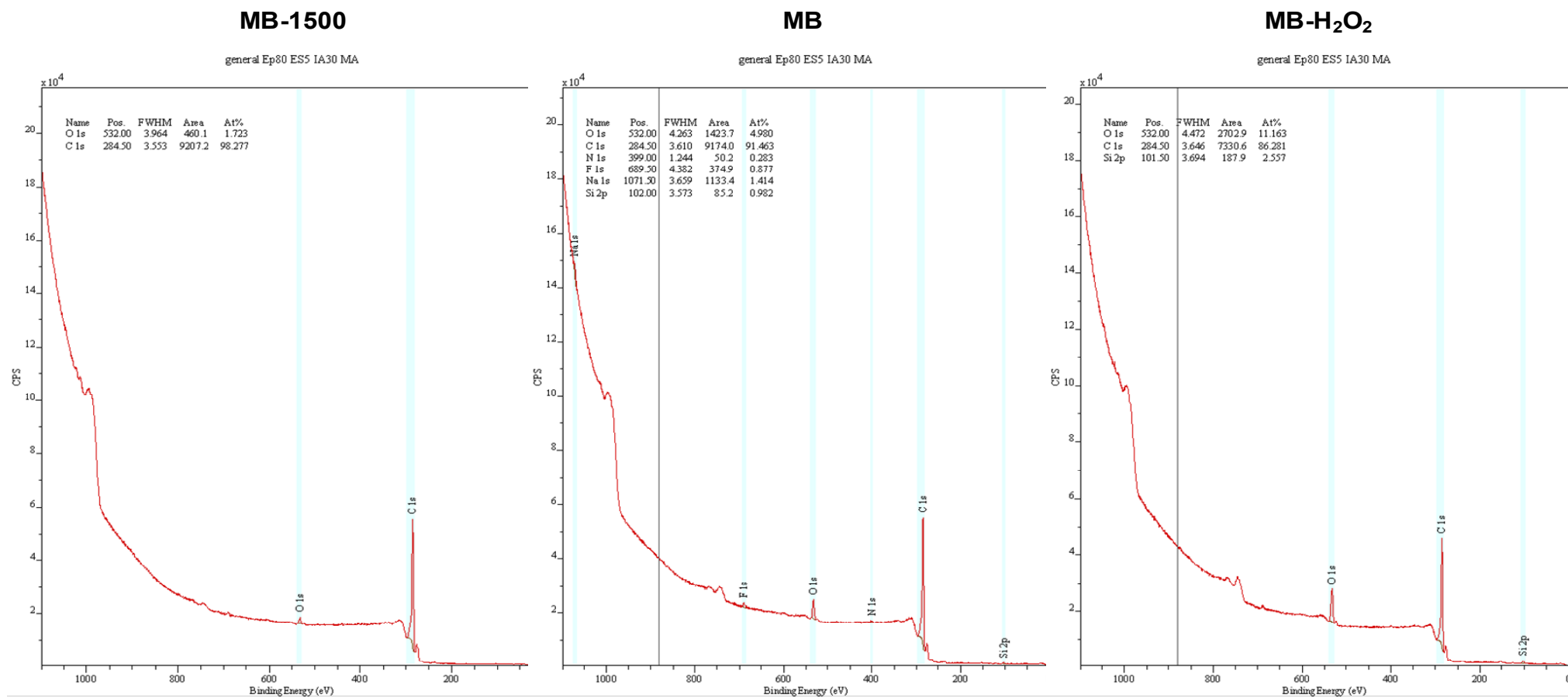


Figure S2. XPS profiles of MB, MB-1500 and MB-H₂O₂ carbons (from reference 22).

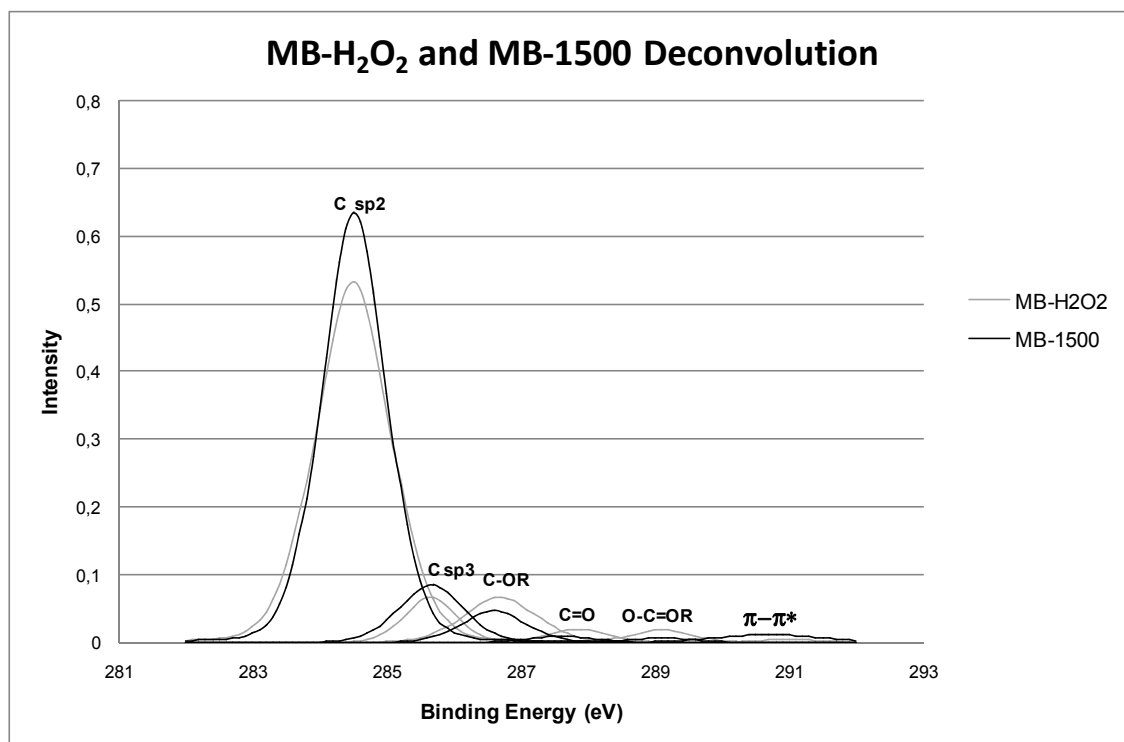


Figure S3. Deconvolution of C(1s) peak of the XPS profiles of MB-1500 and MB-H₂O₂ carbons (from reference 22).

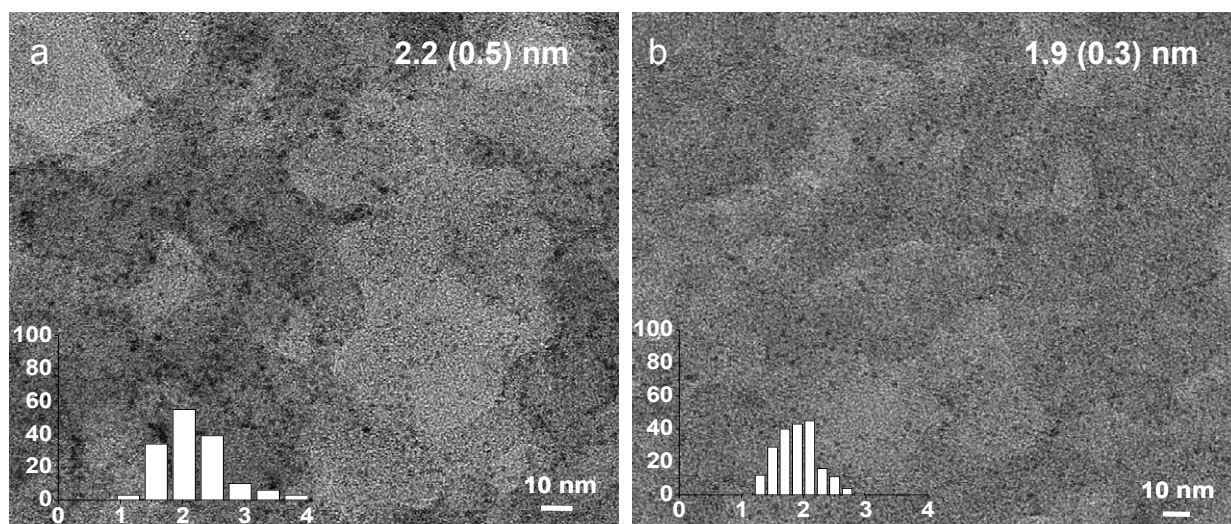


Figure S4. HRTEM images and histograms of catalysts Pd(TPP)/MB-H₂O₂ (a) and Pd(TOP)/MB-H₂O₂ (b) (adapted from reference 22).

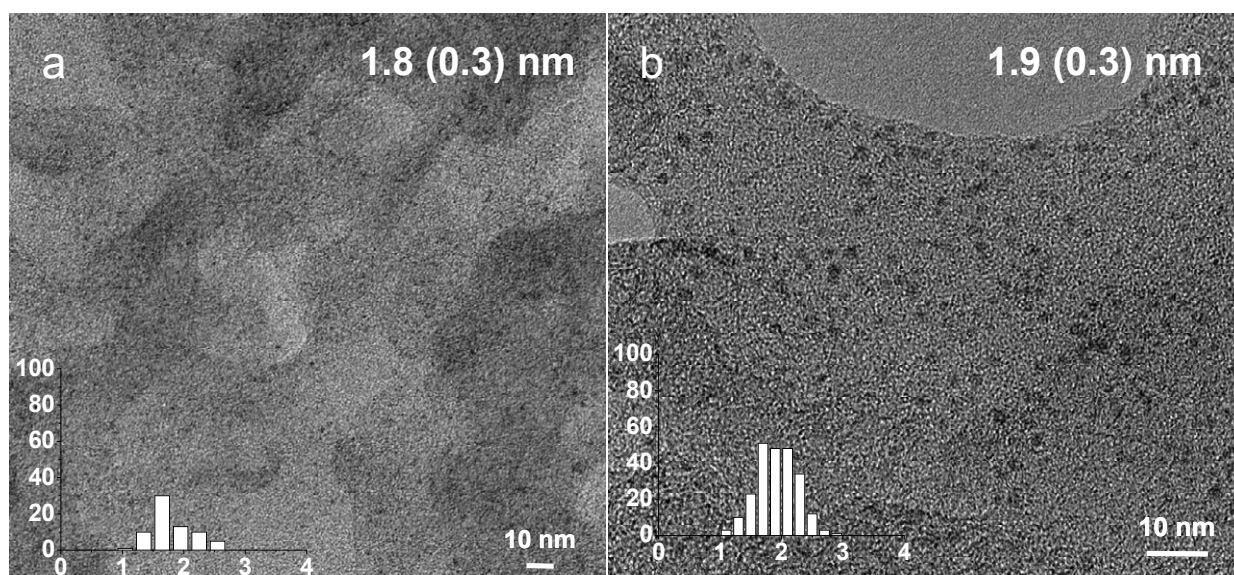


Figure S5. HRTEM images and histograms of catalysts Pd(TPP)/MB-1500 (a) and Pd(TOP)/MB-1500 (b) (adapted from reference 22).