

Electronic Supplementary Information

Figure a: AFM image of obtained cellulose nanocrystals (CNCs)

The AFM image of CNCs was obtained by a Nanoscope Dimension 3100 SPM, with a Nanoscope IIIa controller. Images were collected in tapping mode in air, with a phosphorus doped silicon tip with a nominal frequency of 150 kHz.

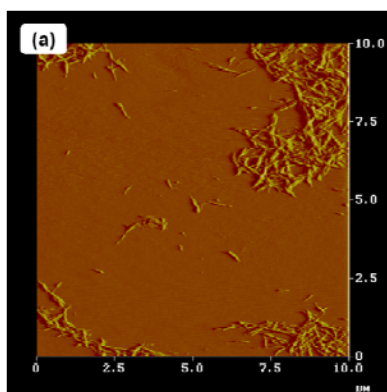


Figure b: Birefringence

Shear-induced birefringence of a 1% (w/w) CNC suspension viewed between crossed polars.

