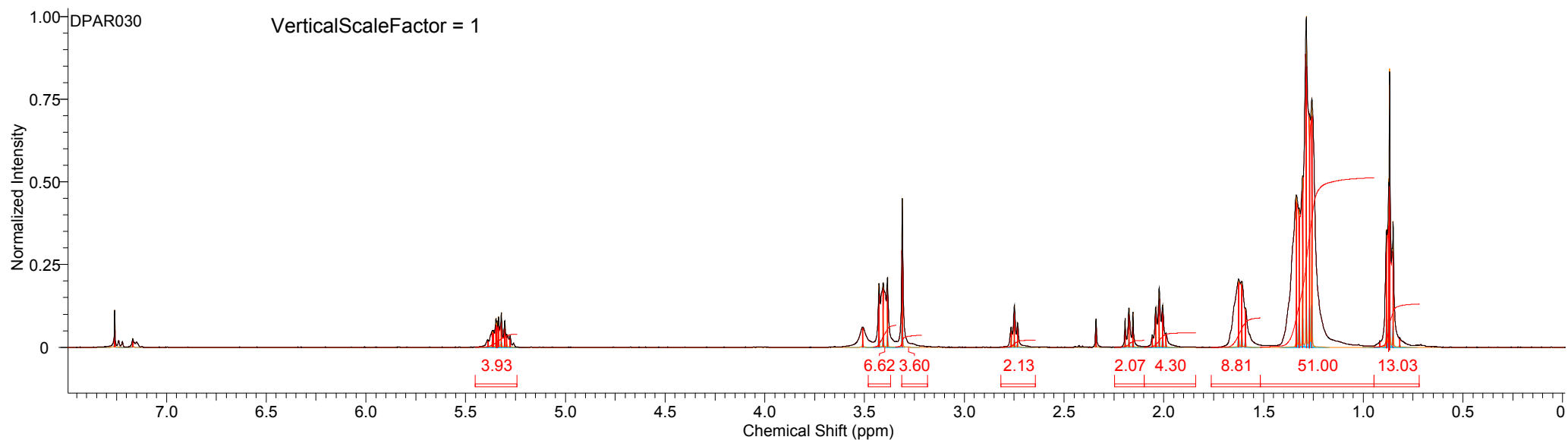
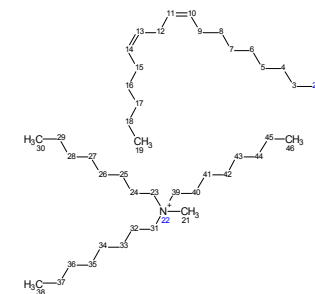


This report was created by ACD/NMR Processor Academic Edition. For more information go to www.acdlabs.com/nmrproc/

1/18/2012 1:30:45 PM

Formula C ₄₃ H ₈₅ NO ₂	FW 648.1405 (279.4381+368.7024)
--	--

Acquisition Time (sec) 1.9980	Comment Std Proton parameters	Date Jan 16 2012	Date Stamp Jan 16 2012
File Name \\wetsus04\users\...dpar\Project\NMR\DPAR030.fid\fid	Frequency (MHz) 400.16	Nucleus 1H	Number of Transients 16
Original Points Count 12791	Points Count 16384	Pulse Sequence s2pul	Receiver Gain 12.00
Spectrum Offset (Hz) 2400.9629	Spectrum Type STANDARD	Sweep Width (Hz) 6402.05	Temperature (degree C) 25.000
Solvent CHLOROFORM-d			



This report was created by ACD/NMR Processor Academic Edition. For more information go to www.acdlabs.com/nmrproc/

No.	(ppm)	(Hz)	*(ppm)	*(Hz)	Height	*Height	*FWHH	*Area	*LF	*Function	No.	Atom	Exp. Shift (ppm)
1	0.82	326.9	0.82	326.93	0.0284	0.0284	0.70	1234593.75	0.50	Gauss+Lorentz	1	38	0.87
2	0.85	340.2	0.85	340.22	0.3801	0.3801	0.70	16538923.0	0.50	Gauss+Lorentz	2	30	0.87
3	0.87	347.3	0.87	347.25	0.8343	0.8343	0.70	36323504.0	0.50	Gauss+Lorentz	3	46	0.87
4	0.87	349.2	0.87	349.20	0.4957	0.4957	0.70	21587290.0	0.50	Gauss+Lorentz	4	19	0.87
5	0.88	353.5	0.88	353.50	0.3538	0.3538	0.70	15413098.0	0.50	Gauss+Lorentz	5	37	1.29
6	0.92	366.8	0.92	366.79	0.0200	0.0200	0.70	875111.25	0.50	Gauss+Lorentz	6	35	1.29
7	1.26	503.2	1.26	503.17	0.7518	0.7518	0.70	32731550.0	0.50	Gauss+Lorentz	7	36	1.29
8	1.27	507.9	1.27	507.86	0.7040	0.7040	0.70	30667178.0	0.50	Gauss+Lorentz	8	34	1.29
9	1.29	514.5	1.29	514.50	1.0000	1.0000	0.70	43606176.0	0.50	Gauss+Lorentz	9	33	1.29
10	1.30	521.5	1.30	521.54	0.5175	0.5175	0.70	22590406.0	0.50	Gauss+Lorentz	10	29	1.29
11	1.32	528.6	1.32	528.57	0.4211	0.4211	0.70	18407952.0	0.50	Gauss+Lorentz	11	28	1.29
12	1.33	534.0	1.33	534.04	0.4600	0.4600	0.70	20126612.0	0.50	Gauss+Lorentz	12	27	1.29
13	1.59	636.4	1.59	636.42	0.1187	0.1187	0.70	5167063.00	0.50	Gauss+Lorentz	13	26	1.29
14	1.61	643.8	1.61	643.85	0.1999	0.1999	0.70	8696673.00	0.50	Gauss+Lorentz	14	25	1.29
15	1.62	650.1	1.62	650.10	0.2061	0.2061	0.70	8963280.00	0.50	Gauss+Lorentz	15	43	1.29
16	1.99	795.9	1.99	795.86	0.0430	0.0430	0.70	1871412.13	0.50	Gauss+Lorentz	16	42	1.29
17	2.01	802.5	2.01	802.50	0.1273	0.1273	0.70	5539554.50	0.50	Gauss+Lorentz	17	45	1.29
18	2.02	809.5	2.02	809.54	0.1800	0.1800	0.70	7829333.00	0.50	Gauss+Lorentz	18	44	1.29
19	2.04	816.6	2.04	816.57	0.1217	0.1217	0.70	5293112.00	0.50	Gauss+Lorentz	19	41	1.29
20	2.06	823.2	2.06	823.21	0.0377	0.0377	0.70	1639476.75	0.50	Gauss+Lorentz	20	5	1.29
21	2.15	862.3	2.15	862.29	0.1063	0.1063	0.70	4653591.00	0.50	Gauss+Lorentz	21	6	1.29
22	2.17	870.1	2.17	870.11	0.1188	0.1188	0.70	5209242.00	0.50	Gauss+Lorentz	22	7	1.29
23	2.19	877.9	2.19	877.92	0.0873	0.0873	0.70	3831050.50	0.50	Gauss+Lorentz	23	8	1.29
24	2.34	936.5	2.34	936.54	0.0853	0.0853	0.70	3723558.00	0.50	Gauss+Lorentz	24	18	1.29
25	2.73	1093.6	2.73	1093.63	0.0750	0.0750	0.70	3272518.50	0.50	Gauss+Lorentz	25	17	1.29
26	2.75	1100.3	2.75	1100.27	0.1266	0.1266	0.70	5521235.50	0.50	Gauss+Lorentz	26	16	1.29
27	2.77	1106.5	2.77	1106.52	0.0611	0.0611	0.70	2663481.75	0.50	Gauss+Lorentz	27	32	1.62
28	3.31	1325.0	3.31	1324.97	0.4498	0.4498	0.70	19633960.0	0.50	Gauss+Lorentz	28	24	1.62
29	3.39	1354.7	3.39	1354.67	0.2110	0.2110	0.70	9253262.00	0.50	Gauss+Lorentz	29	40	1.62
30	3.41	1363.3	3.41	1363.26	0.1951	0.1951	0.70	8558798.00	0.50	Gauss+Lorentz	30	4	1.62
31	3.43	1371.9	3.43	1371.86	0.1930	0.1930	0.70	8451698.00	0.50	Gauss+Lorentz	31	9	2.02
32	3.51	1404.3	3.51	1404.29	0.0618	0.0618	0.70	2703457.50	0.50	Gauss+Lorentz	32	15	2.02
33	5.28	2112.0	5.28	2111.99	0.0348	0.0348	0.70	1515067.63	0.50	Gauss+Lorentz	33	3	2.17
34	5.29	2118.6	5.29	2118.63	0.0397	0.0397	0.70	1731765.50	0.50	Gauss+Lorentz	34	12	2.75
35	5.30	2122.5	5.30	2122.54	0.0797	0.0797	0.70	3482056.50	0.50	Gauss+Lorentz	35	21	3.31
36	5.32	2129.6	5.32	2129.57	0.1051	0.1051	0.70	4595945.00	0.50	Gauss+Lorentz	36	23	3.41
37	5.34	2135.0	5.34	2135.04	0.0923	0.0923	0.70	4037641.50	0.50	Gauss+Lorentz	37	39	3.41
38	5.34	2138.2	5.34	2138.17	0.0781	0.0781	0.70	3419218.25	0.50	Gauss+Lorentz	38	31	3.41
39	5.35	2140.1	5.35	2140.12	0.0867	0.0867	0.70	3798361.75	0.50	Gauss+Lorentz	39	10	5.34
40	5.36	2145.6	5.36	2145.59	0.0504	0.0504	0.70	2211435.50	0.50	Gauss+Lorentz	40	11	5.34
41	5.37	2147.5	5.37	2147.55	0.0511	0.0511	0.70	2238452.50	0.50	Gauss+Lorentz	41	13	5.34
42	5.39	2156.1	5.39	2156.14	0.0223	0.0223	0.70	975037.88	0.50	Gauss+Lorentz	42	14	5.34
43	7.17	2868.5	7.17	2868.52	0.0256	0.0256	0.70	1121951.63	0.50	Gauss+Lorentz			
44	7.26	2905.3	7.26	2905.26	0.1122	0.1122	0.70	4901268.00	0.50	Gauss+Lorentz			