

Supporting information for the paper:

Catalytic cleavage of lignin β -O-4 link mimics using copper on alumina and magnesia-alumina.

Zea Strassberger, Albert H. Alberts, Manuel J. Louwerse, Stefania Tanase* and Gadi Rothenberg*

Van 't Hoff Institute for Molecular Sciences, University of Amsterdam; Science Park 904, 1098, XH, Amsterdam, The Netherlands. Fax: (+)31 (0) 20 525 5604

E-mail: s.grecea@uva.nl, g.rothenberg@uva.nl

<http://www.science.uva.nl/hims/hcsc>

1. NMR spectra of 2-phenoxy-1-phenylethanone **1** and 2-phenoxy-1-phenylethanol **2**

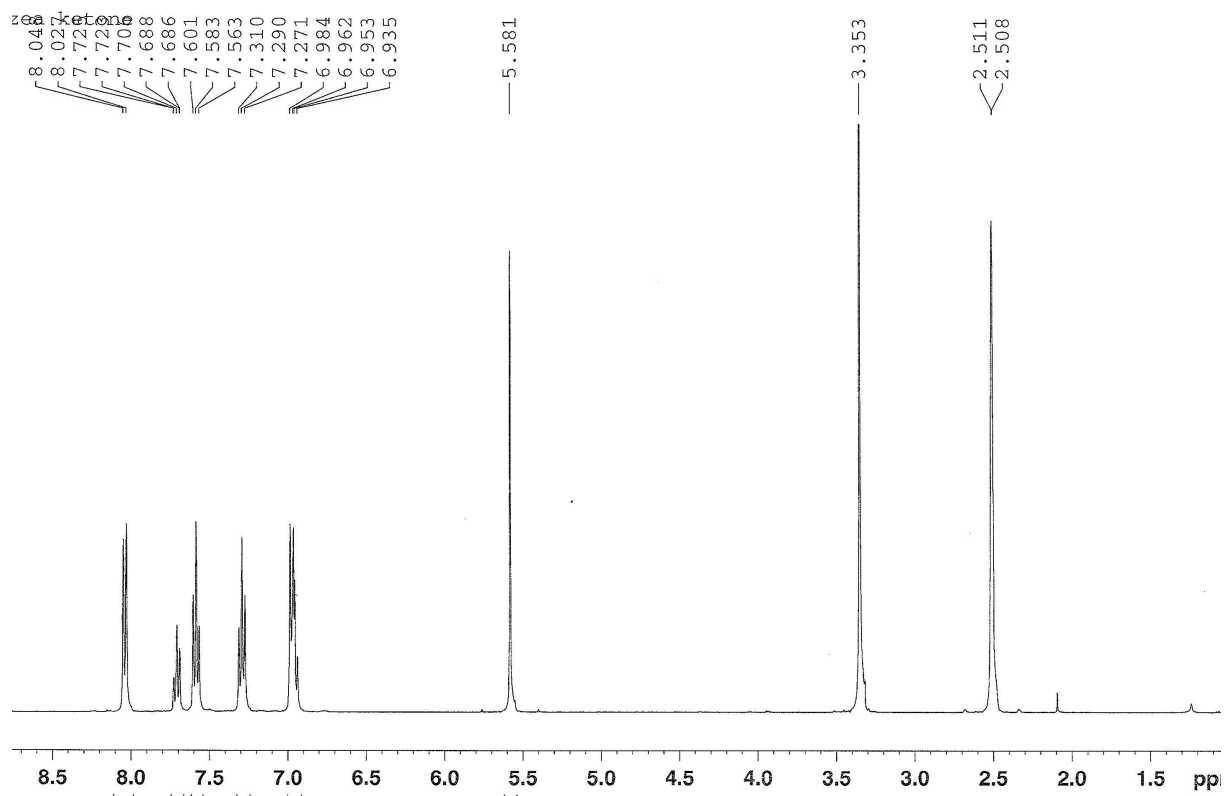


Figure S1: NMR for 2-phenoxy-1-phenylethanone **1**

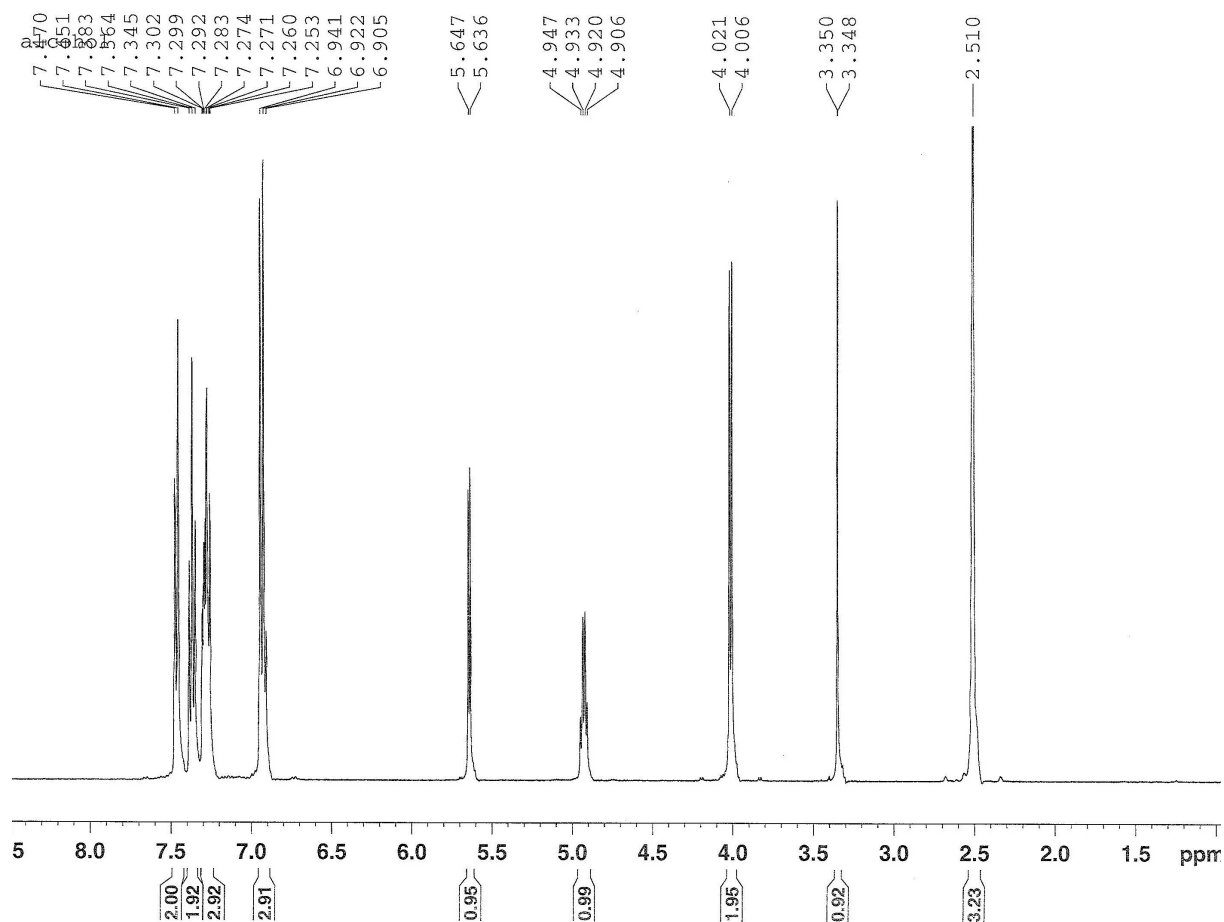


Figure S2: NMR for 2-phenoxy-1-phenylethanol 2

2. Surface area measurements (BET method)

Name	Active species	Support	Surface area [m ² /g]	Pore volume [cm ³ /g]
Al ₂ O ₃	-	Al ₂ O ₃	193	0.46
MgO-Al ₂ O ₃	-	MgO-Al ₂ O ₃	175	0.45
Cu/MgO-Al ₂ O ₃	10%Cu	MgO-Al ₂ O ₃	166	0.26
Cu/Al ₂ O ₃	10% Cu	Al ₂ O ₃	140	0.35