

Supporting information

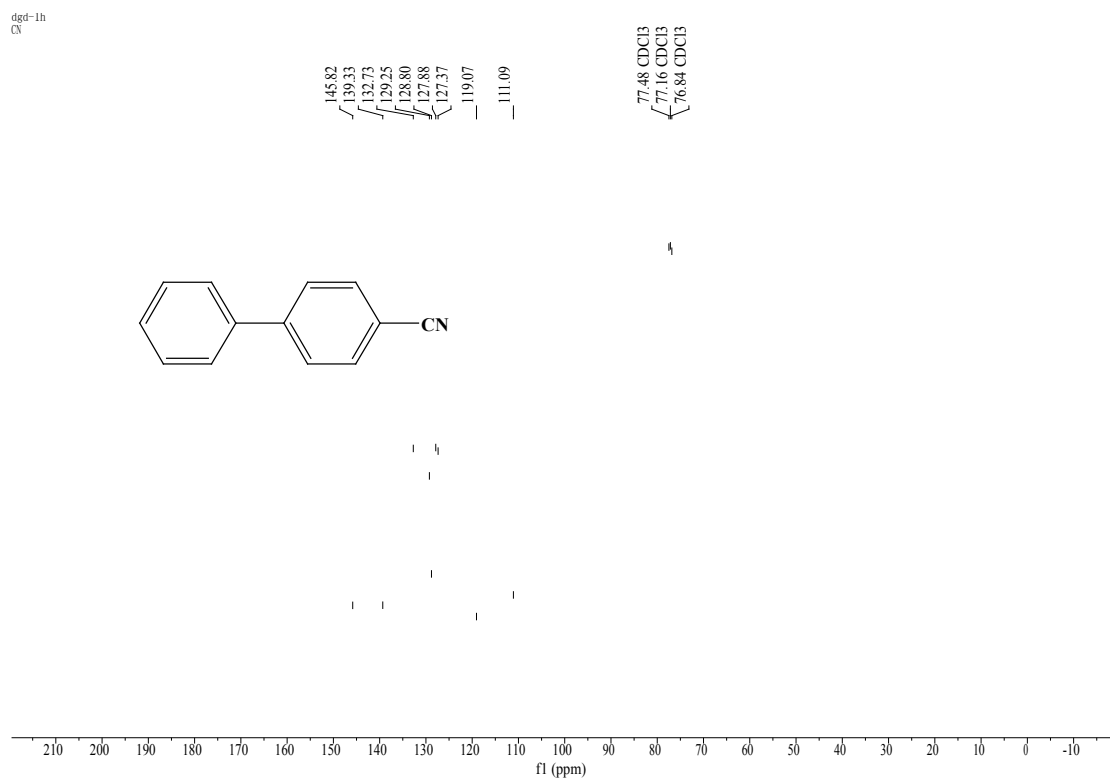
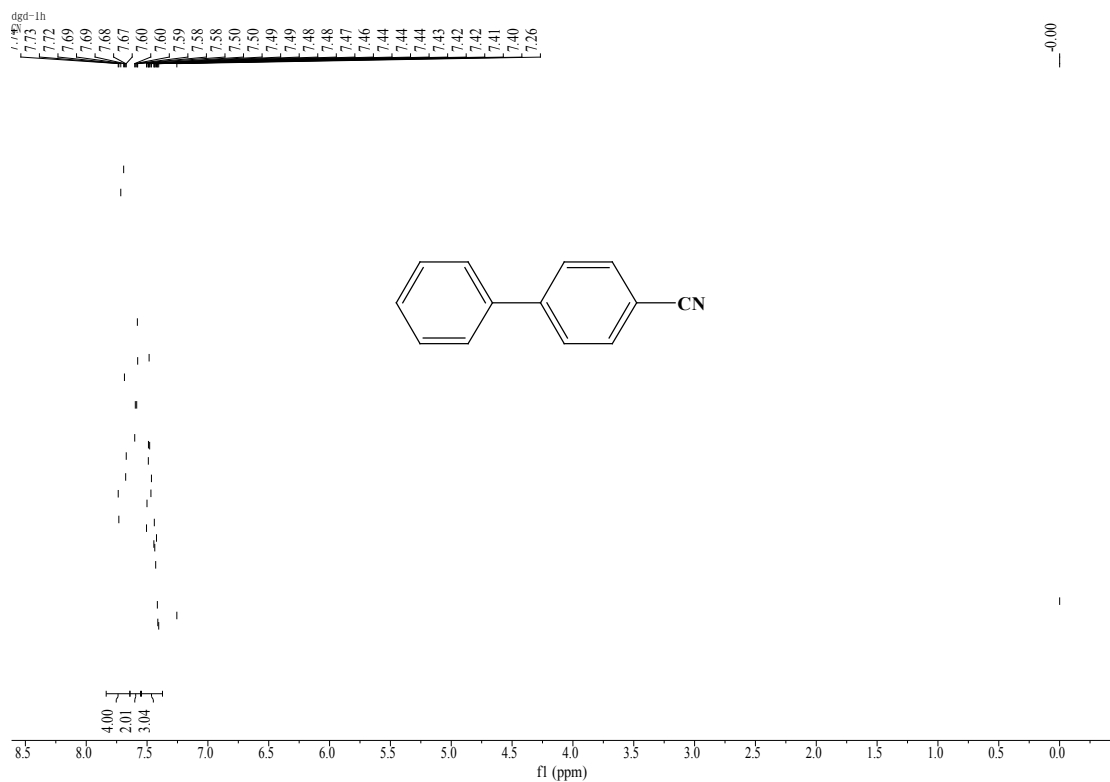
An Efficient Palladium Catalyst on Bentonite for Suzuki-Miyaura Reaction at Room Temperature

Guodong Ding, Weitao Wang, Tao Jiang*, Buxing Han*

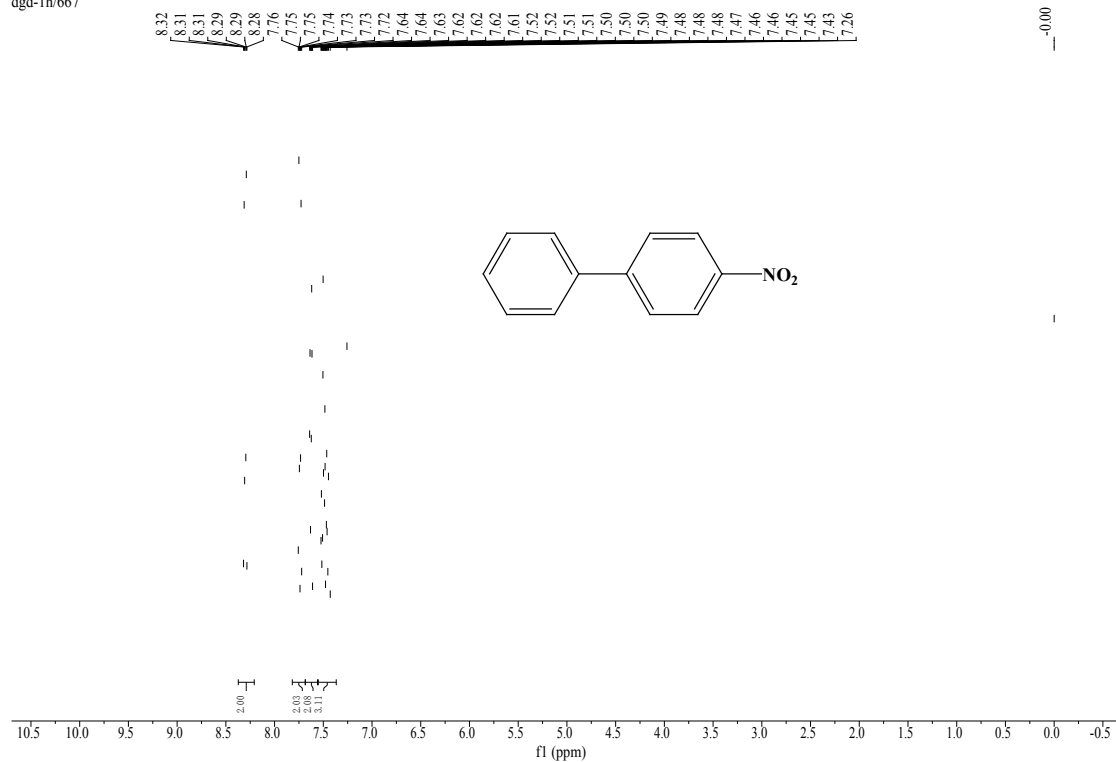
Beijing National Laboratory for Molecular Sciences (BNLMS), Centre for Molecular Science, Institute of Chemistry, Chinese Academy of Sciences, Beijing 100190, China

Tel./fax: +86 10 62562821. E-mail addresses: Jiangt@iccas.ac.cn (Tao Jiang); Hanbx@iccas.ac.cn (Buxing Han).

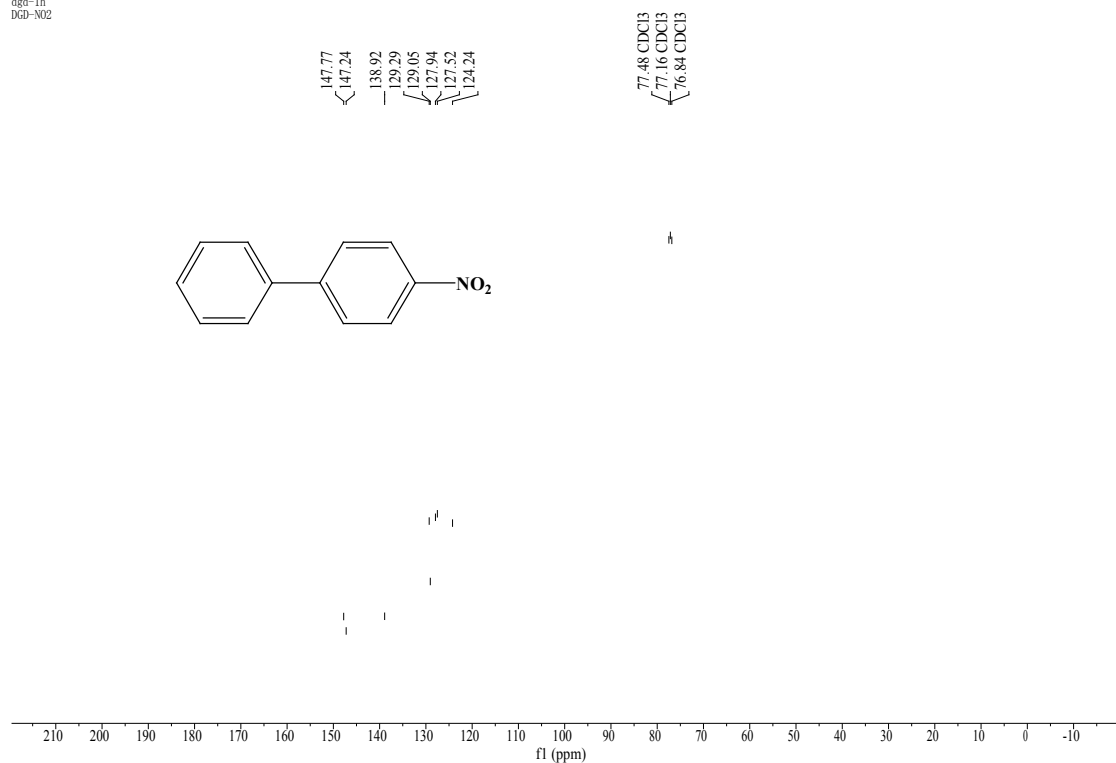
The ^1H NMR and ^{13}C NMR spectra were recorded on a Bruker Avance III 400 HD spectrometer in CDCl_3 with TMS as an internal standard. Chemical shifts for protons are referenced to tetramethylsilane (TMS, ^1H NMR: 0.00 ppm), Chemical shifts for carbons are referenced to the residual solvent peaks (CDCl_3 , ^{13}C NMR: 77.16 ppm).

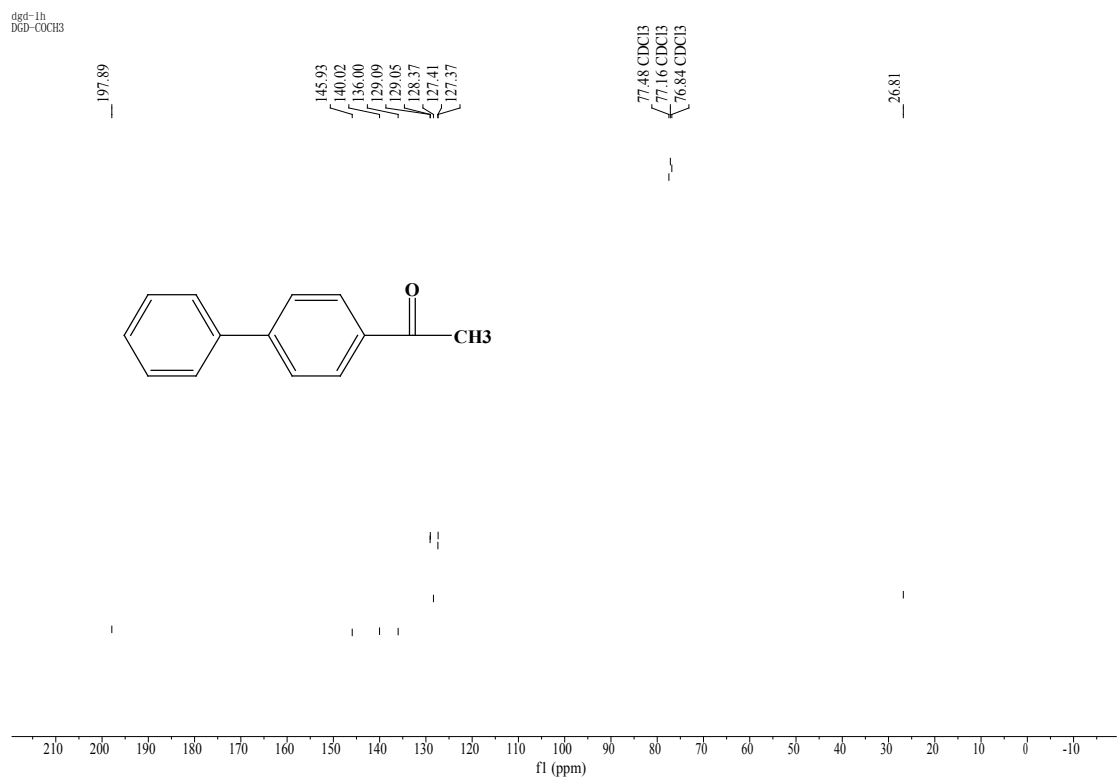
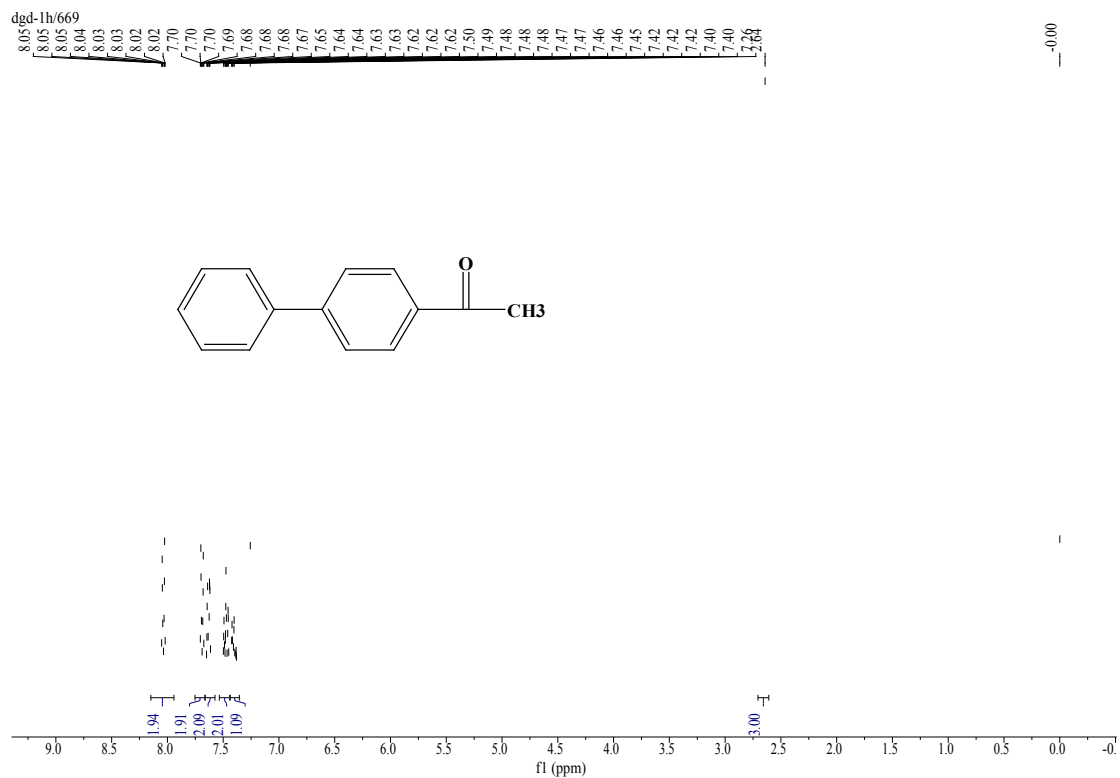


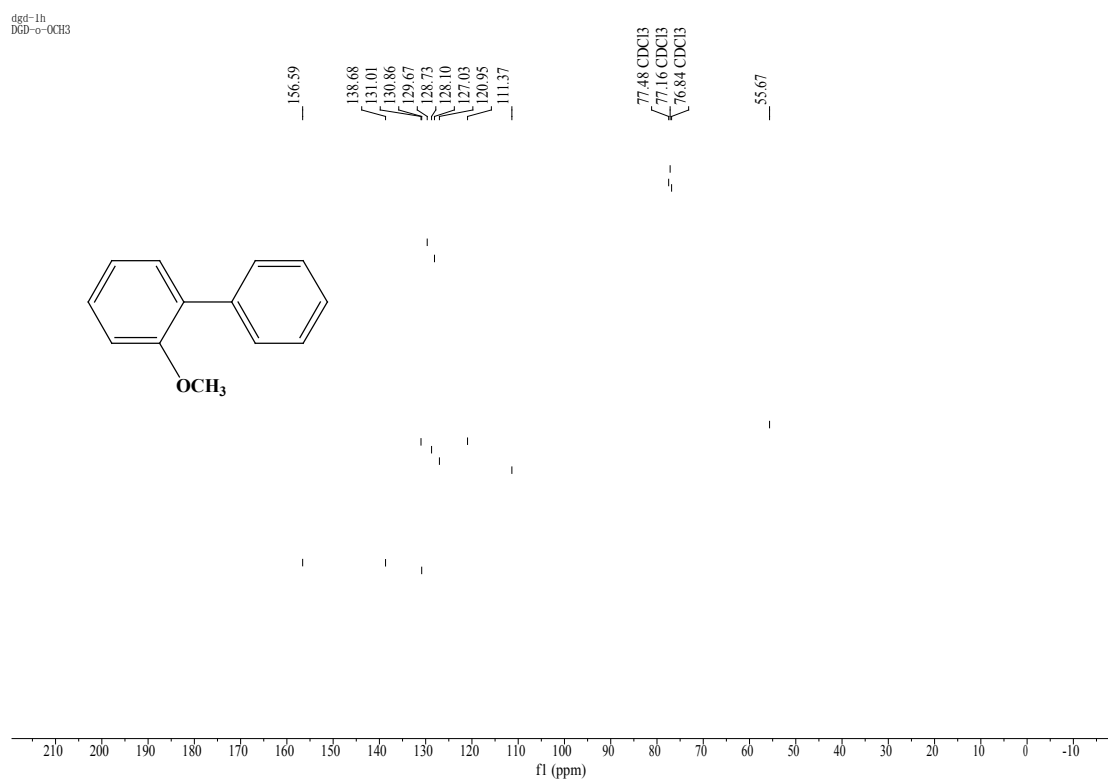
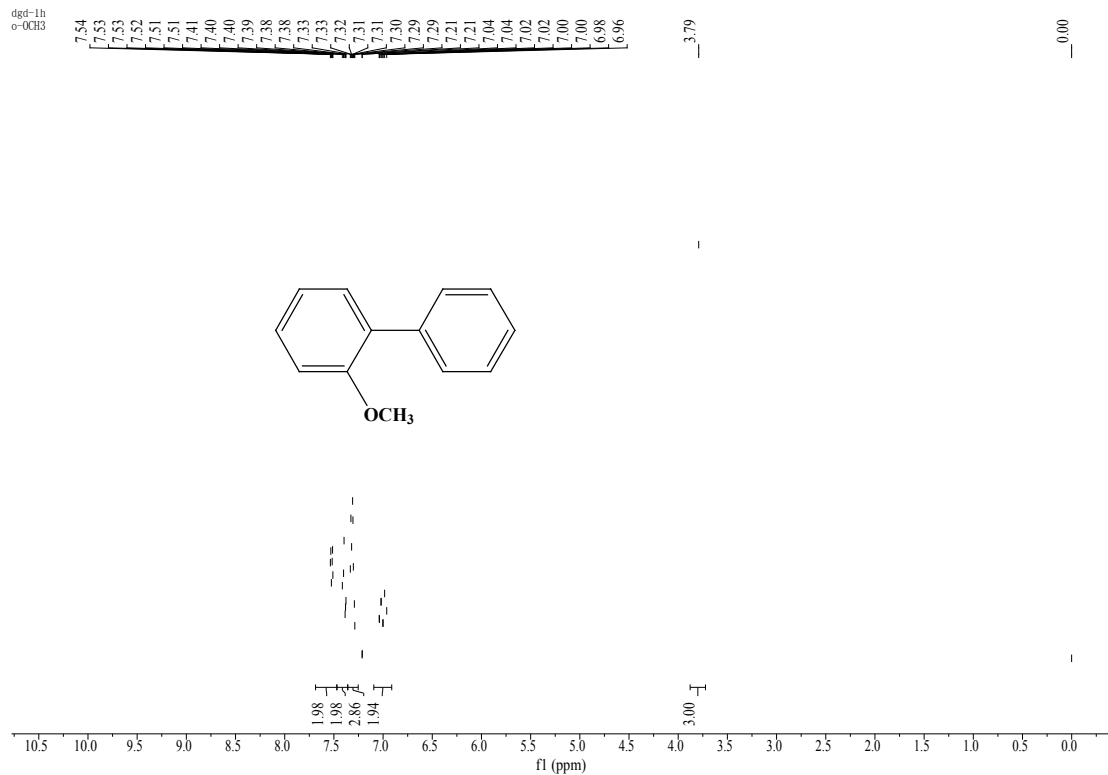
dgd-1h/667

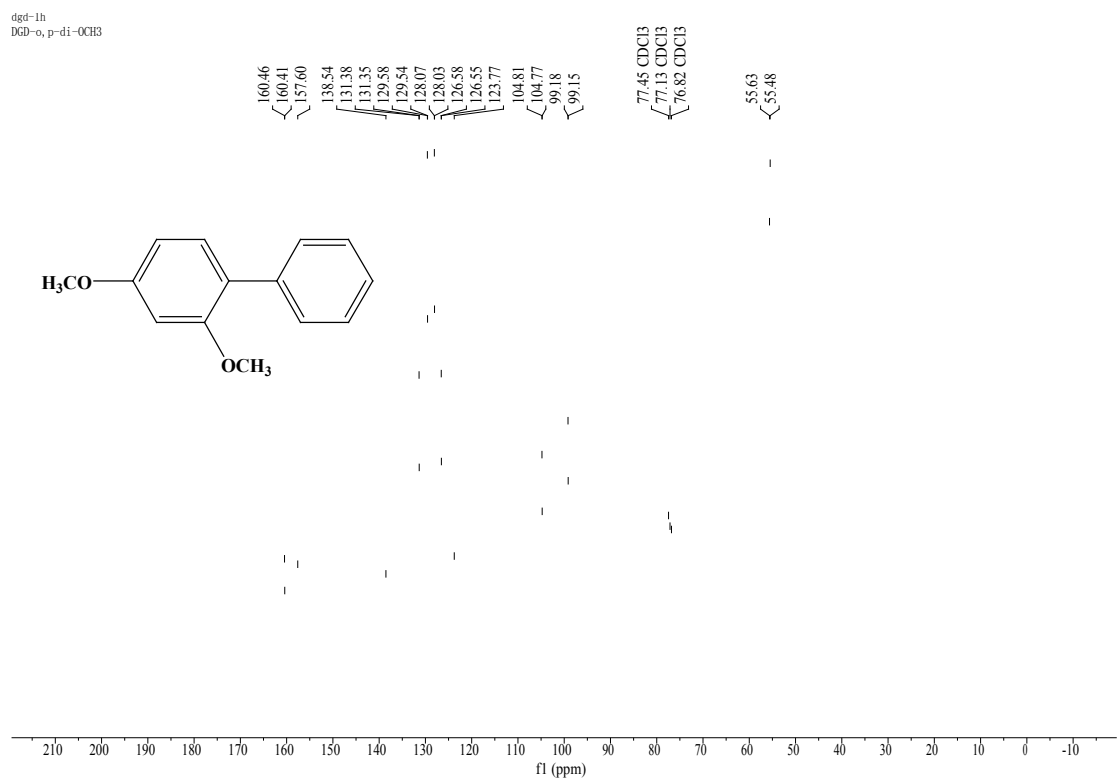
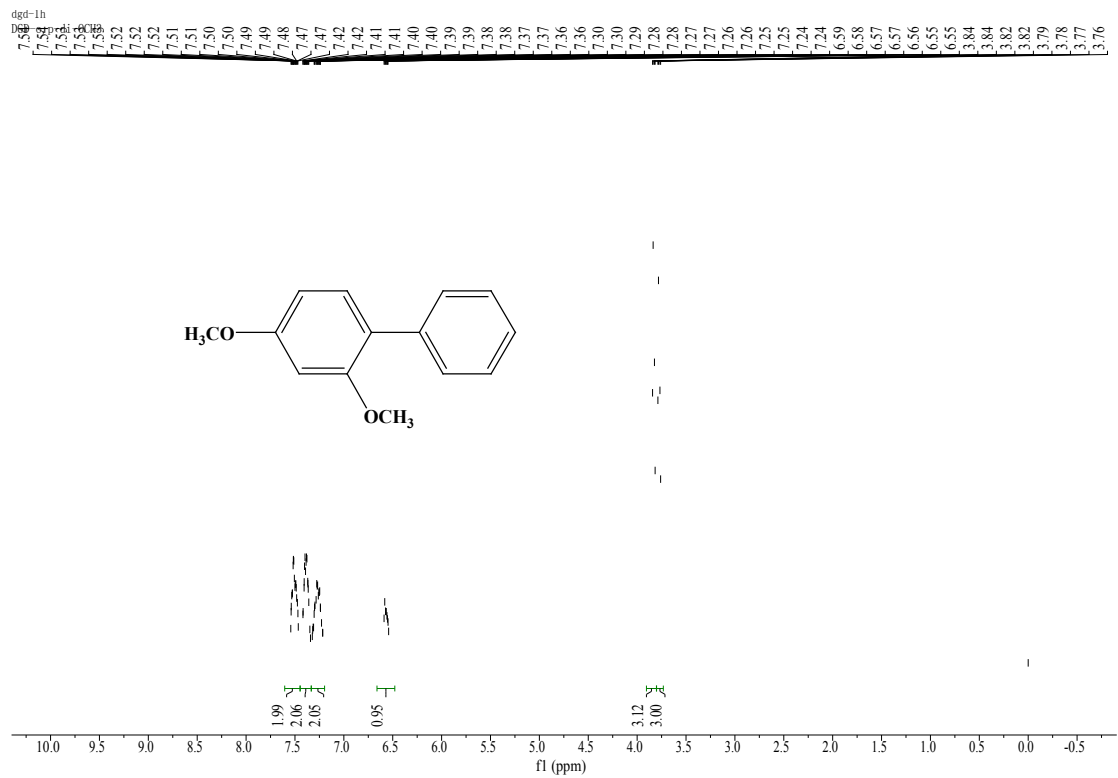


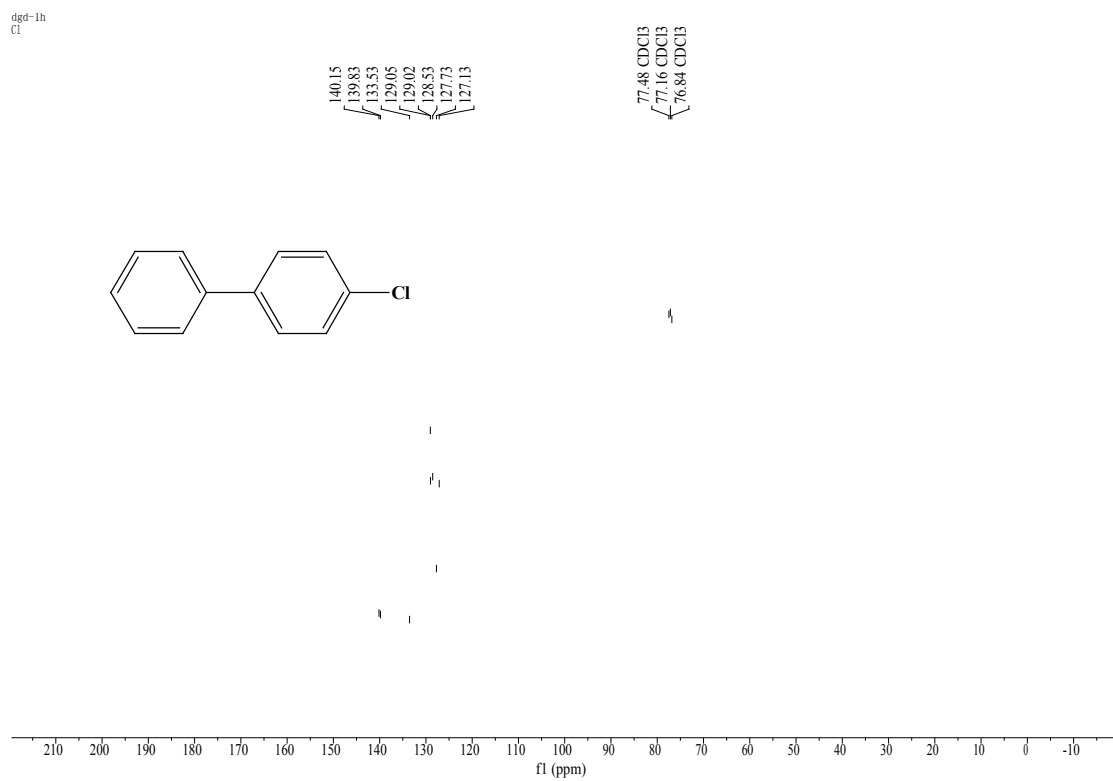
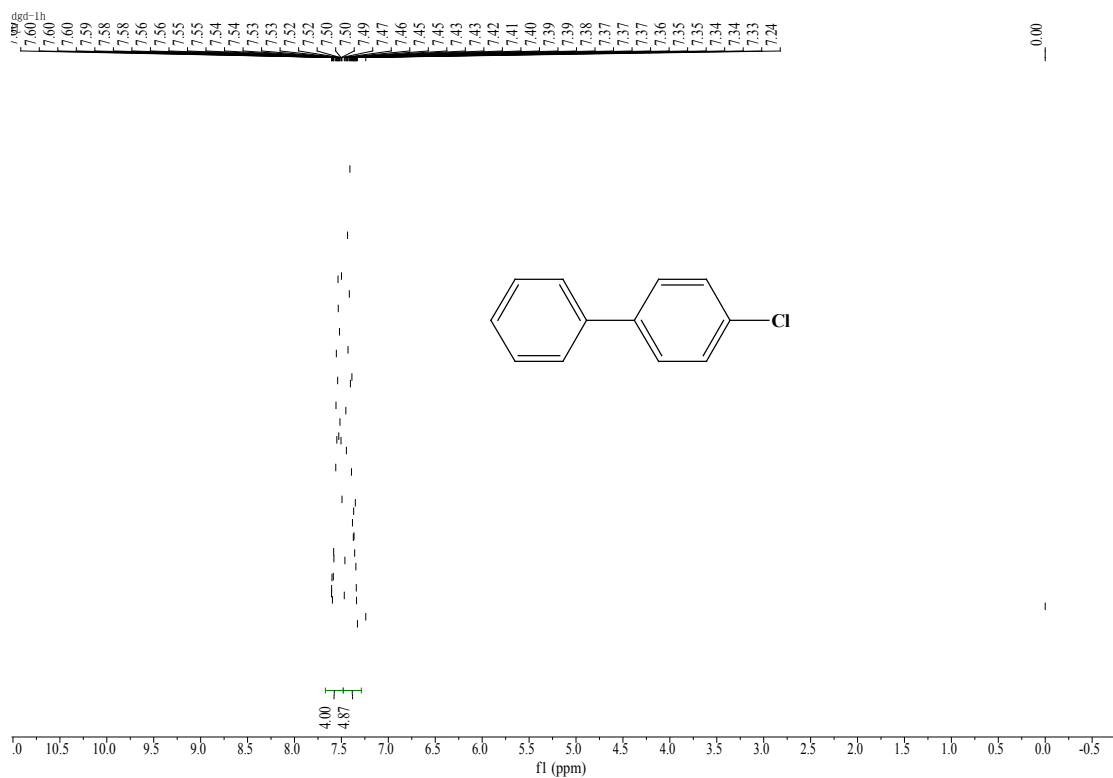
dgd-1h
DCD-N02









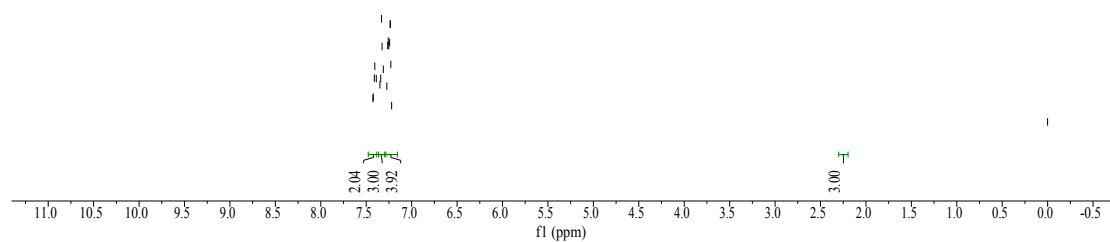
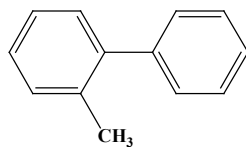


dgd-1h
DGD-o-CH3

7.43
7.42
7.41
7.41
7.39
7.35
7.34
7.33
7.33
7.31
7.27
7.26
7.26
7.25
7.24
7.24
7.23
7.23
7.22

2.27

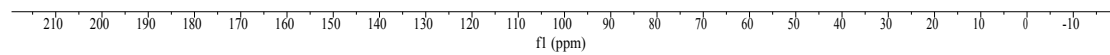
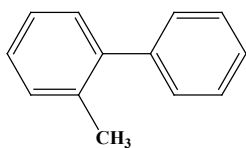
0.00

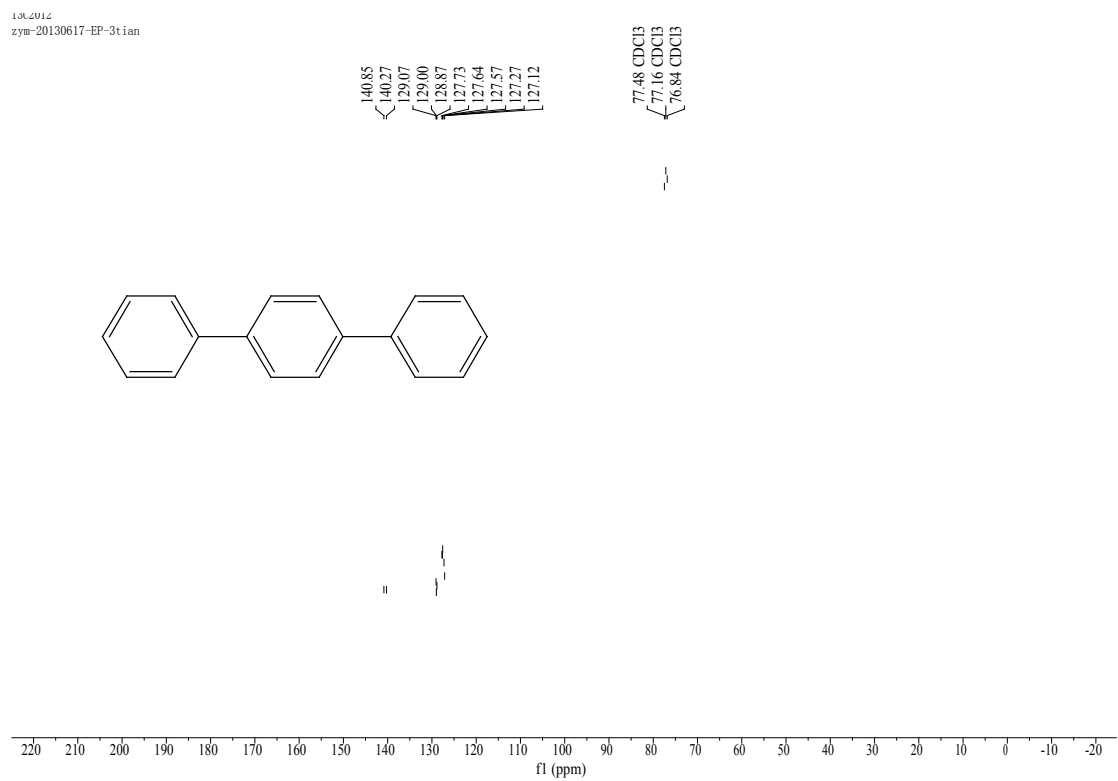
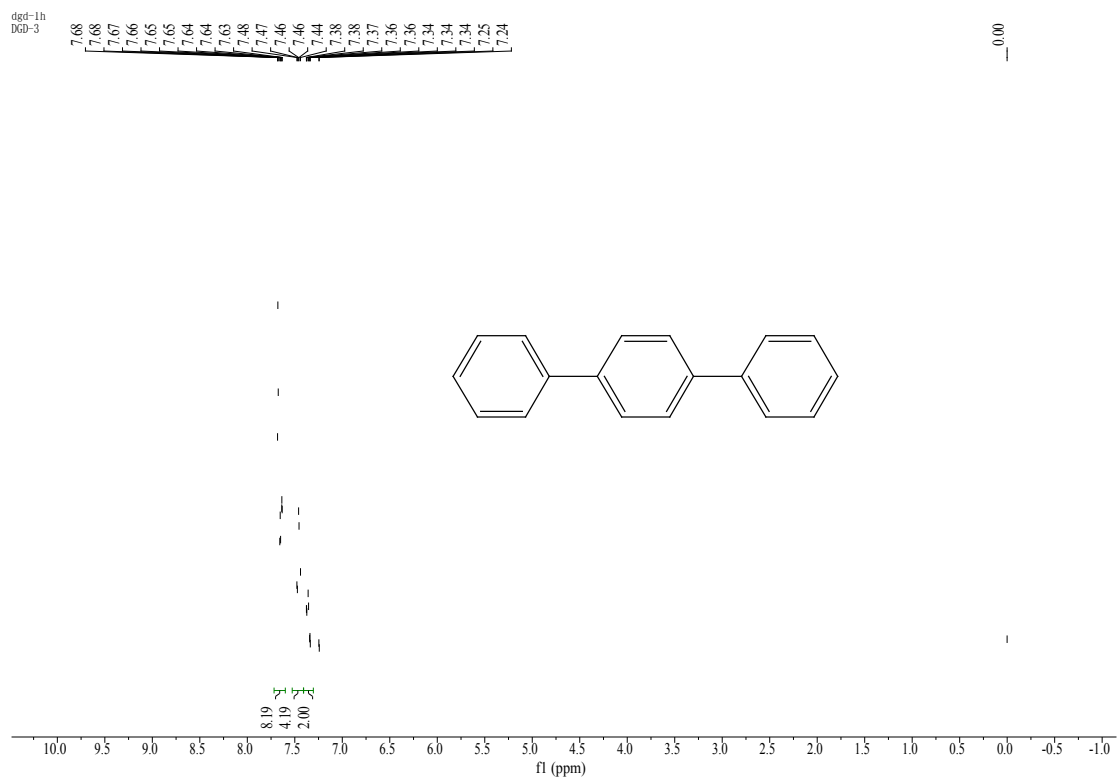


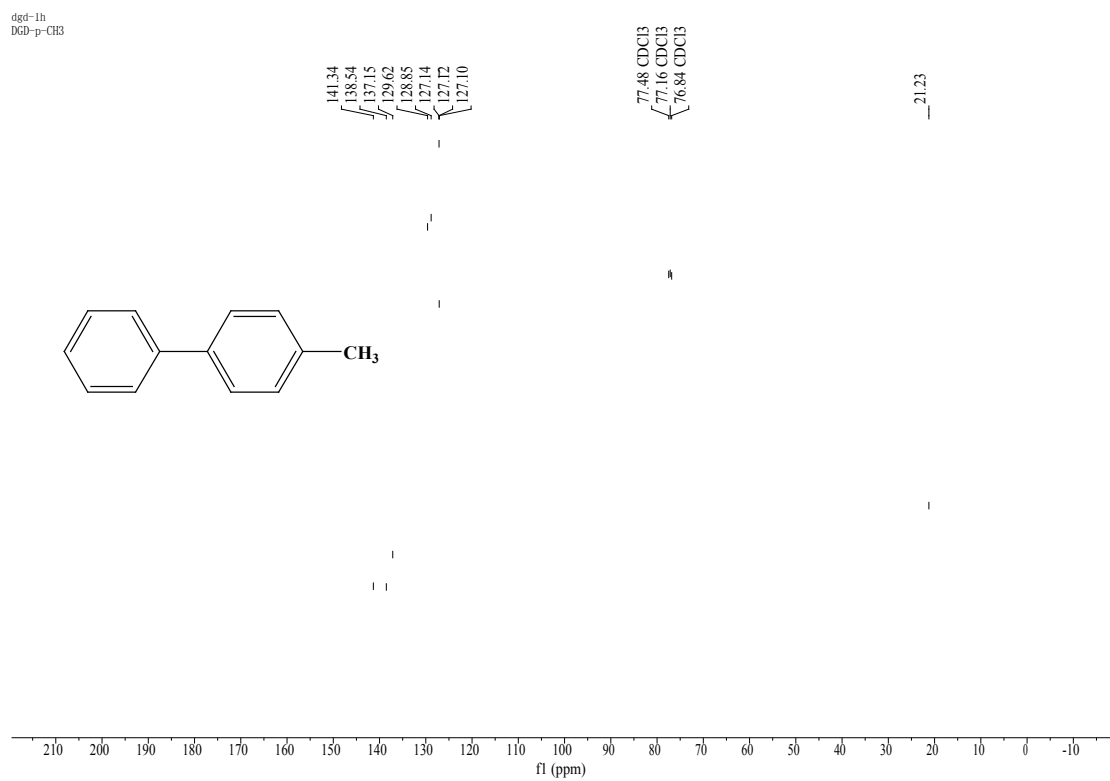
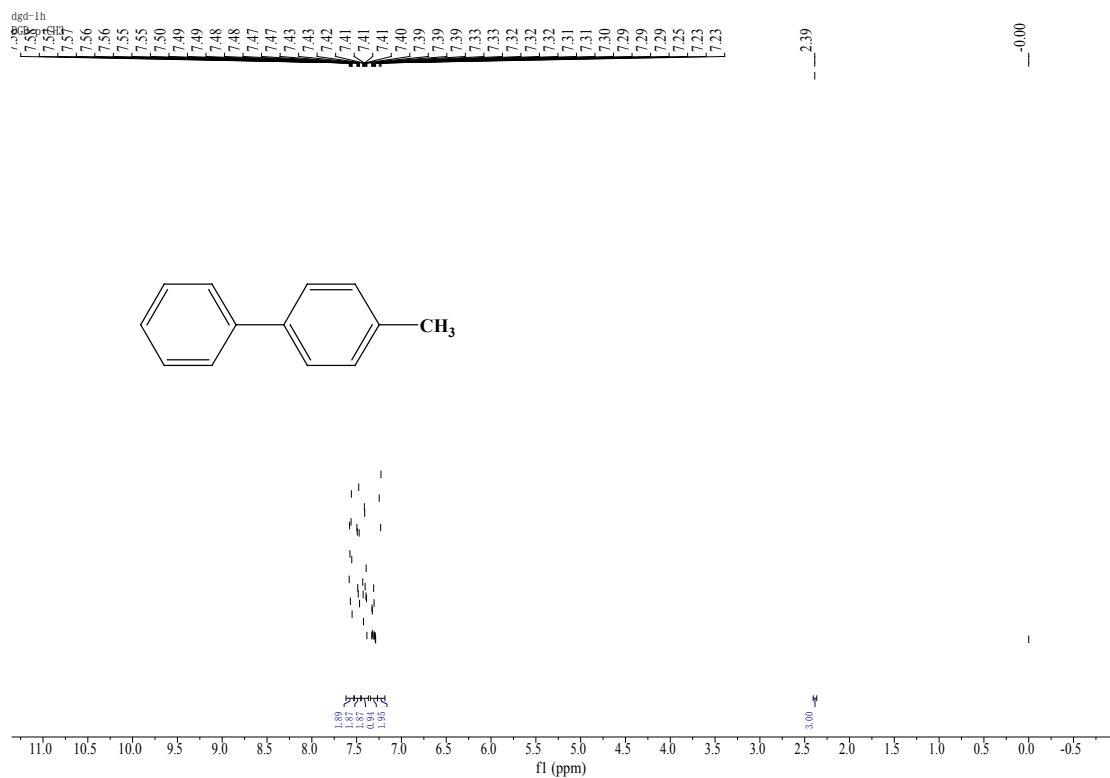
dgd-1h
DGD-o-CH3

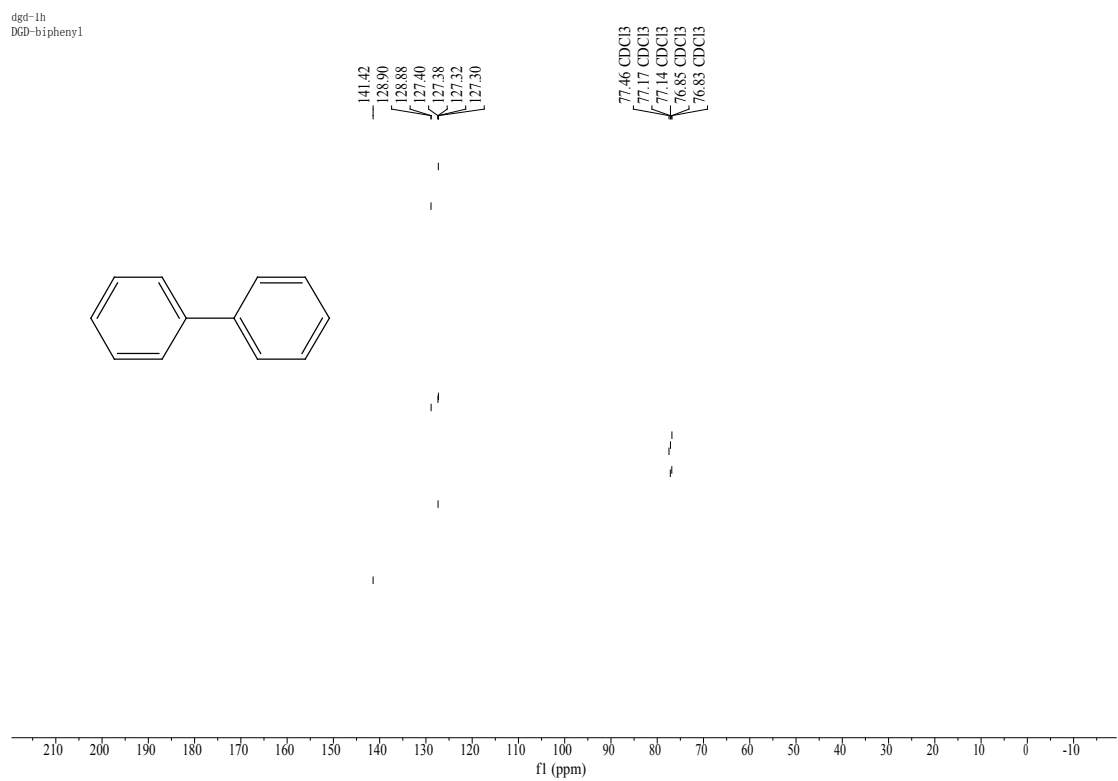
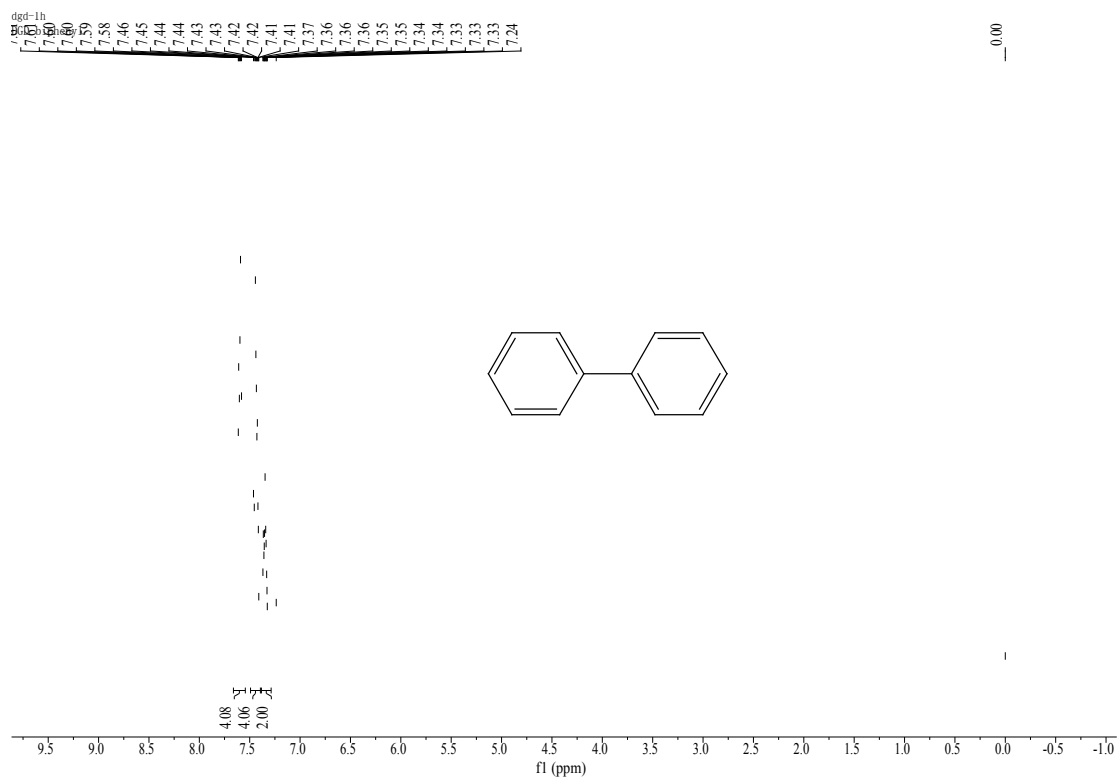
142.11
142.08
135.48
130.44
129.93
129.33
128.19
127.38
126.89
125.89

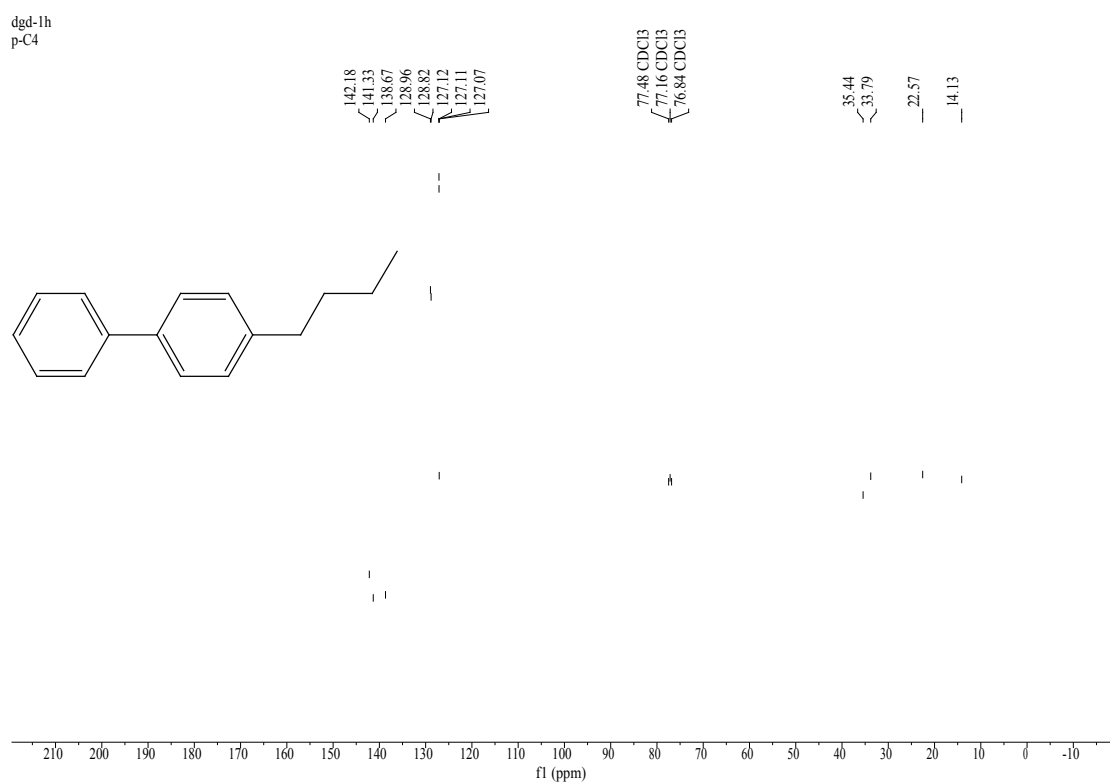
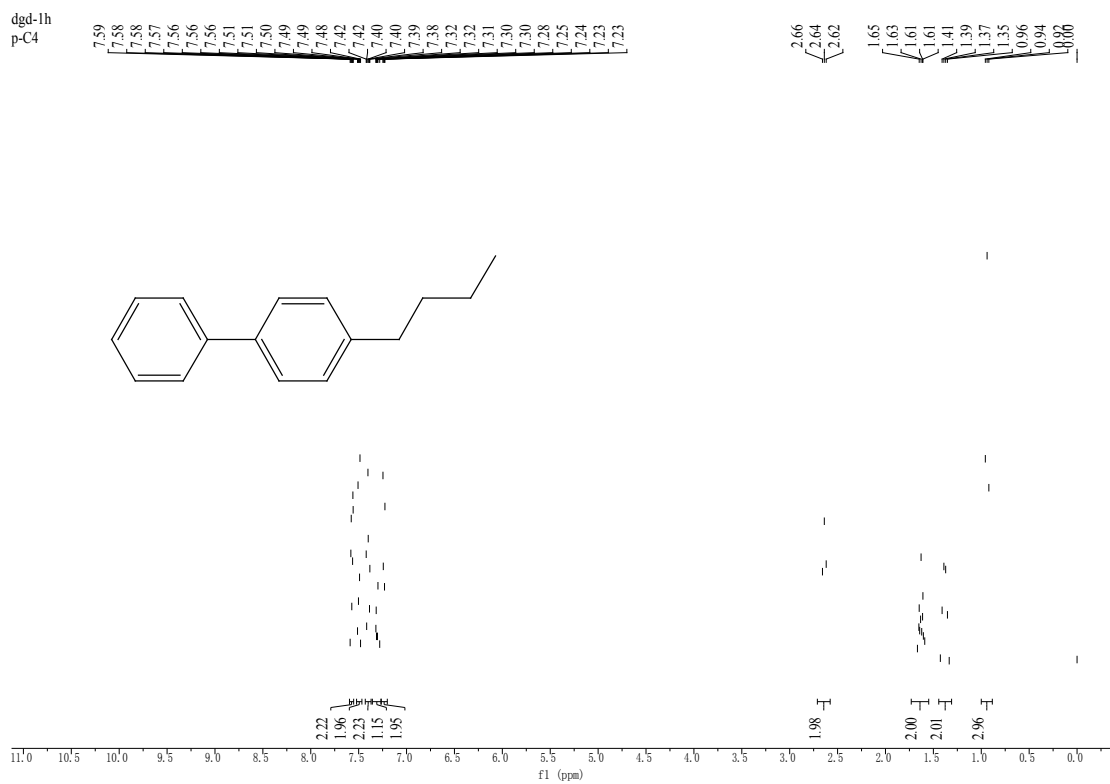
20.61



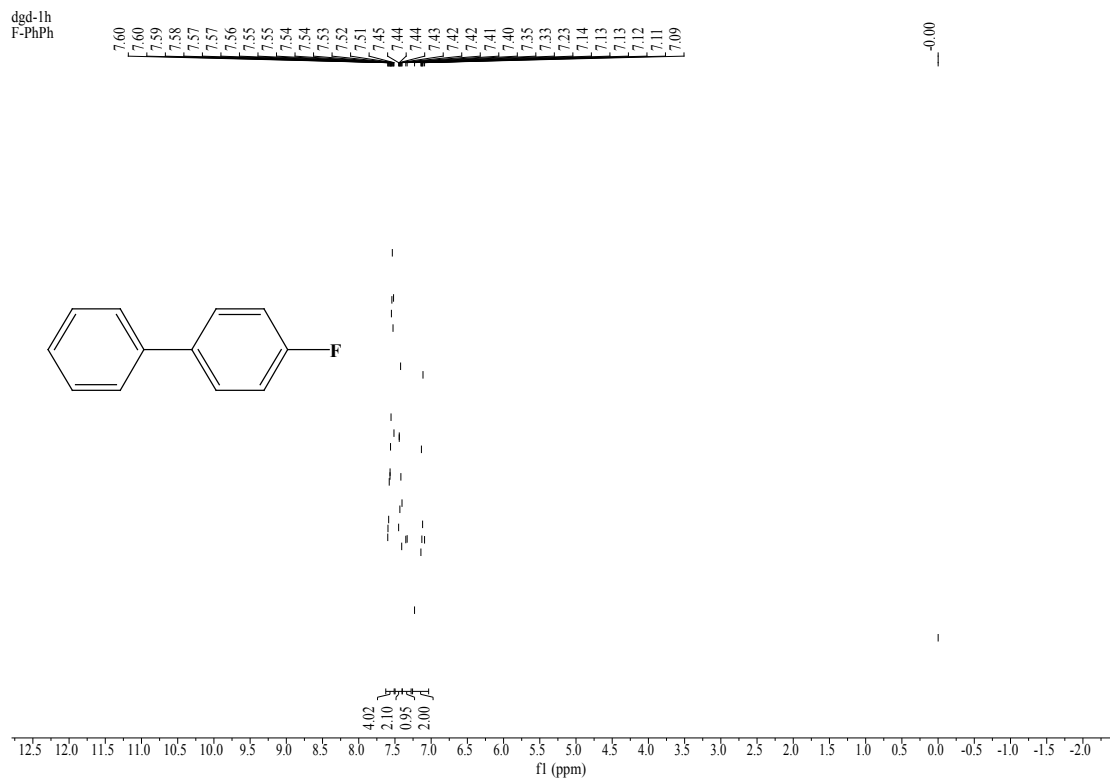








dgd-1h
F-PhPh



¹³C
F-phph

