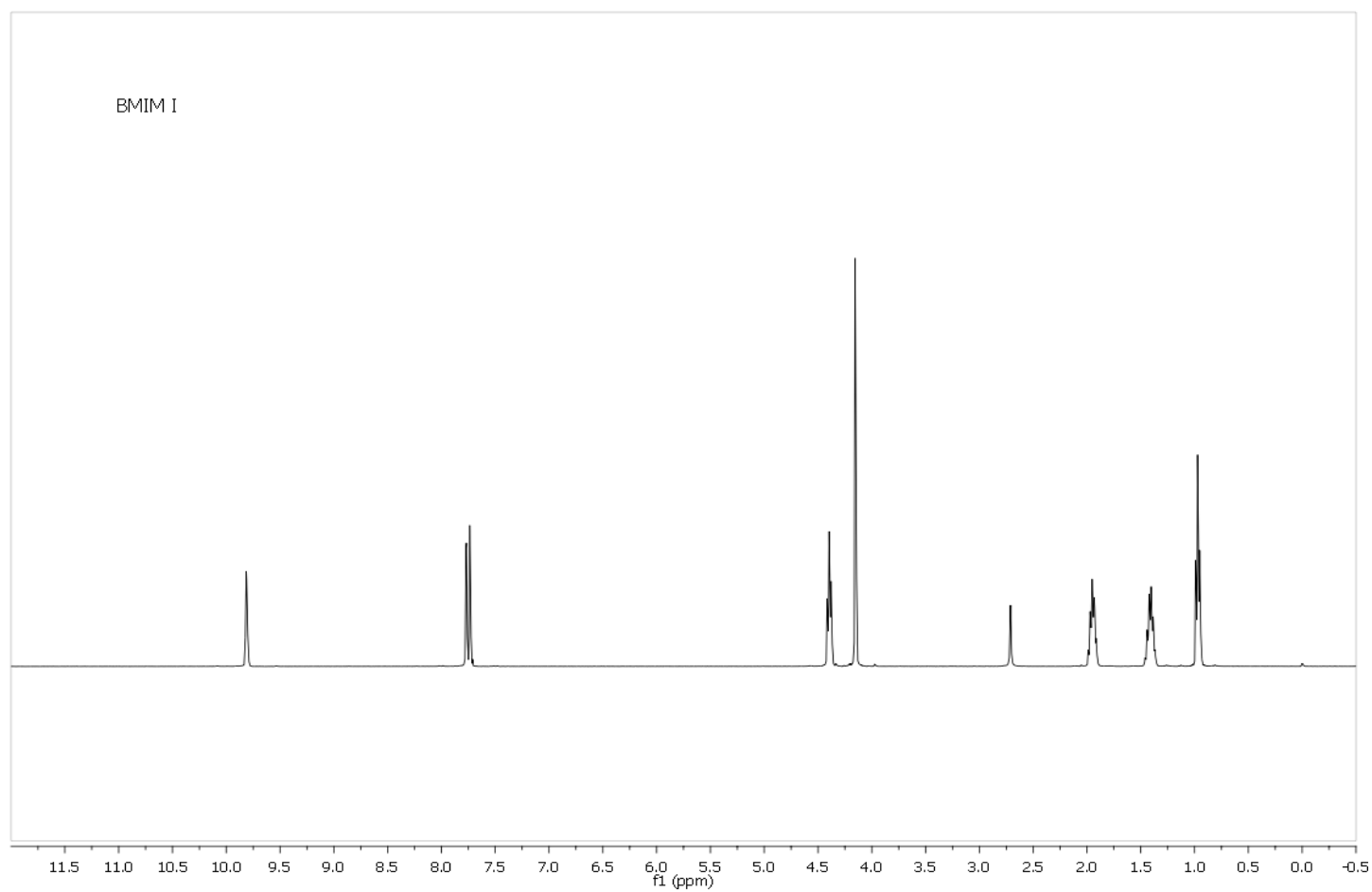
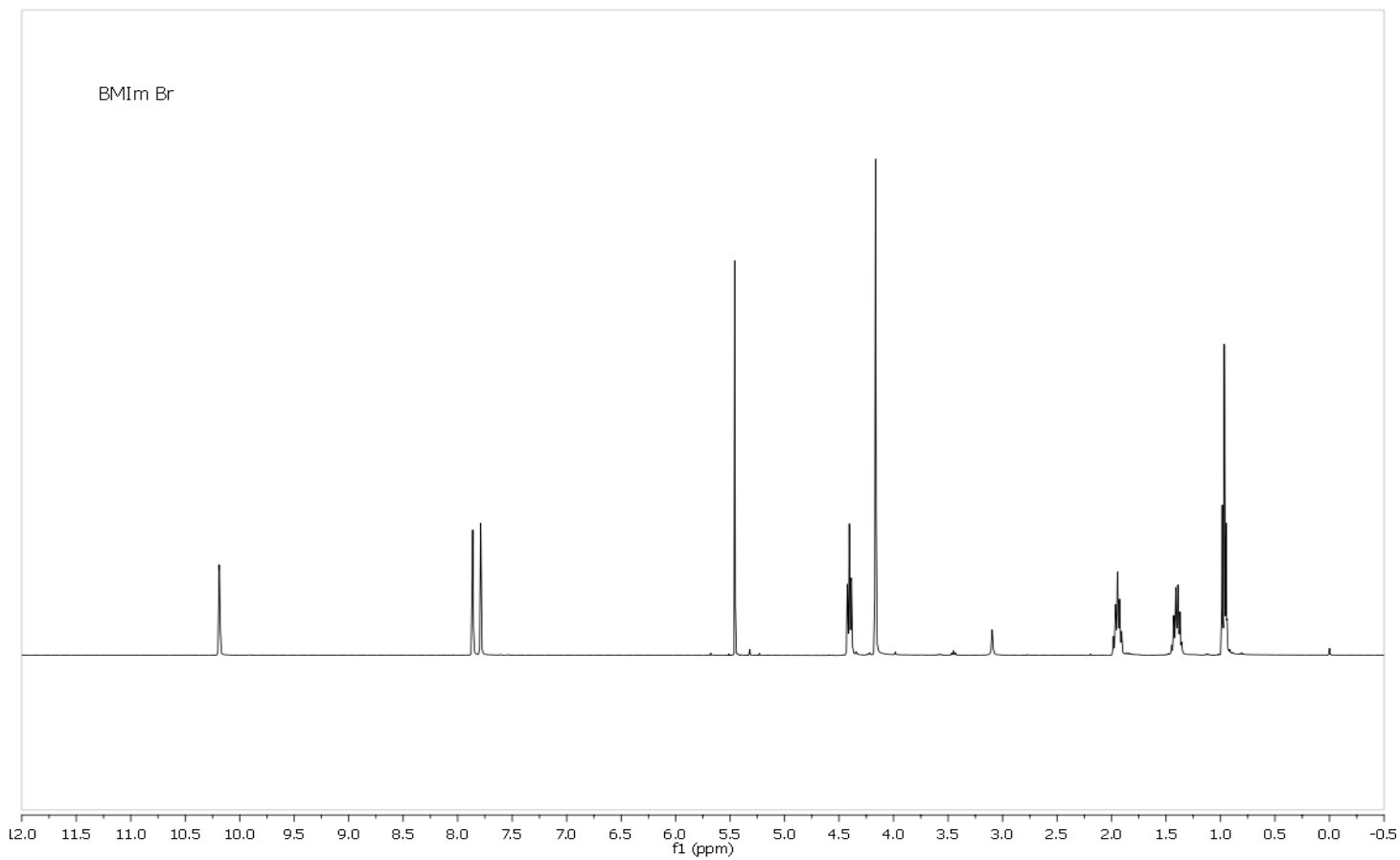


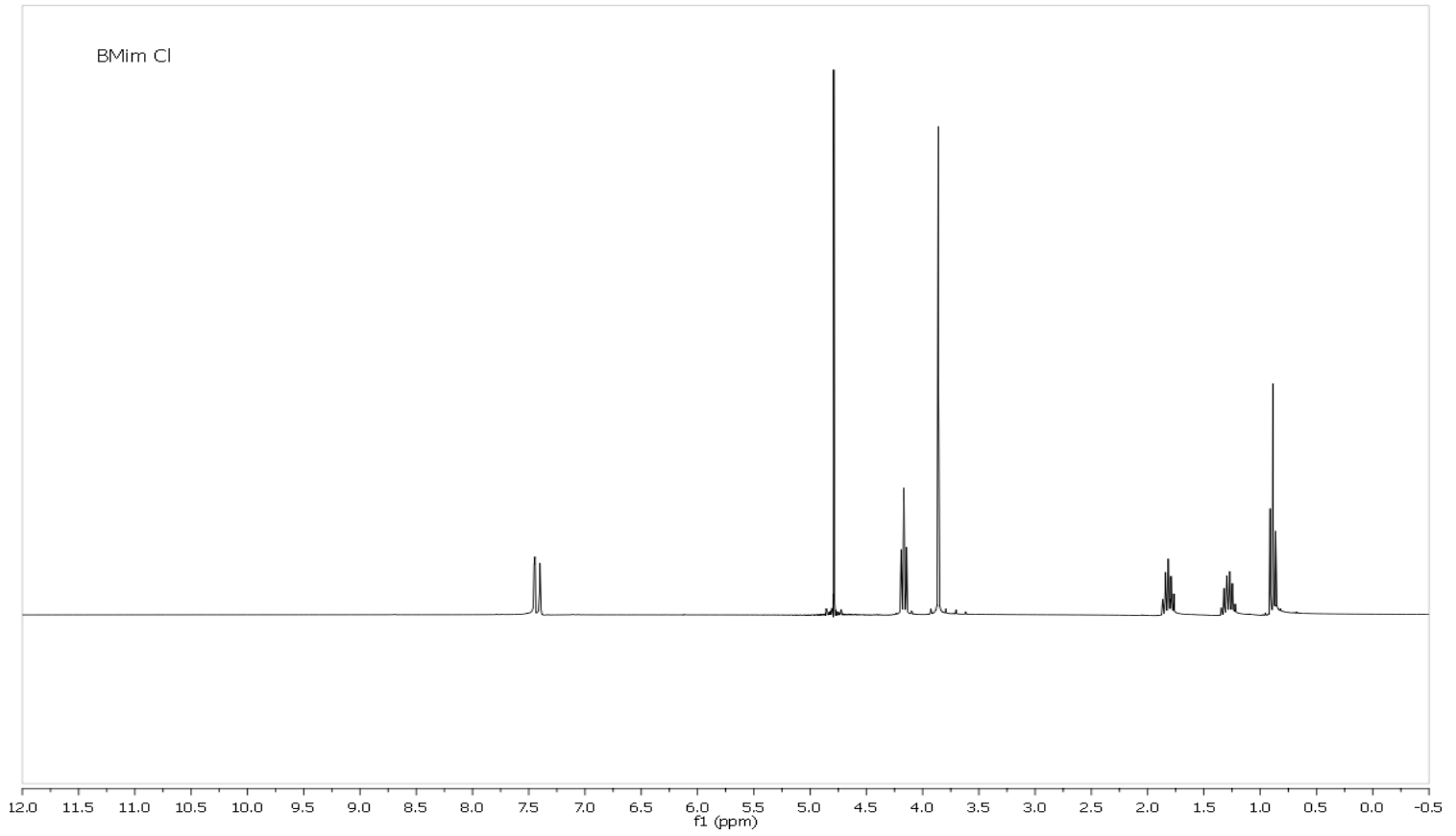
Insights on recyclable catalytic system composed of task-specific ionic liquids for the chemical fixation of carbon dioxide

Anne-Lise Girard,^{a*} Nathalia Simon,^a Marcileia Zanatta,^a Sandro Marmitt,^a Paulo Gonçalves^a and Jairton Dupont^{a*}

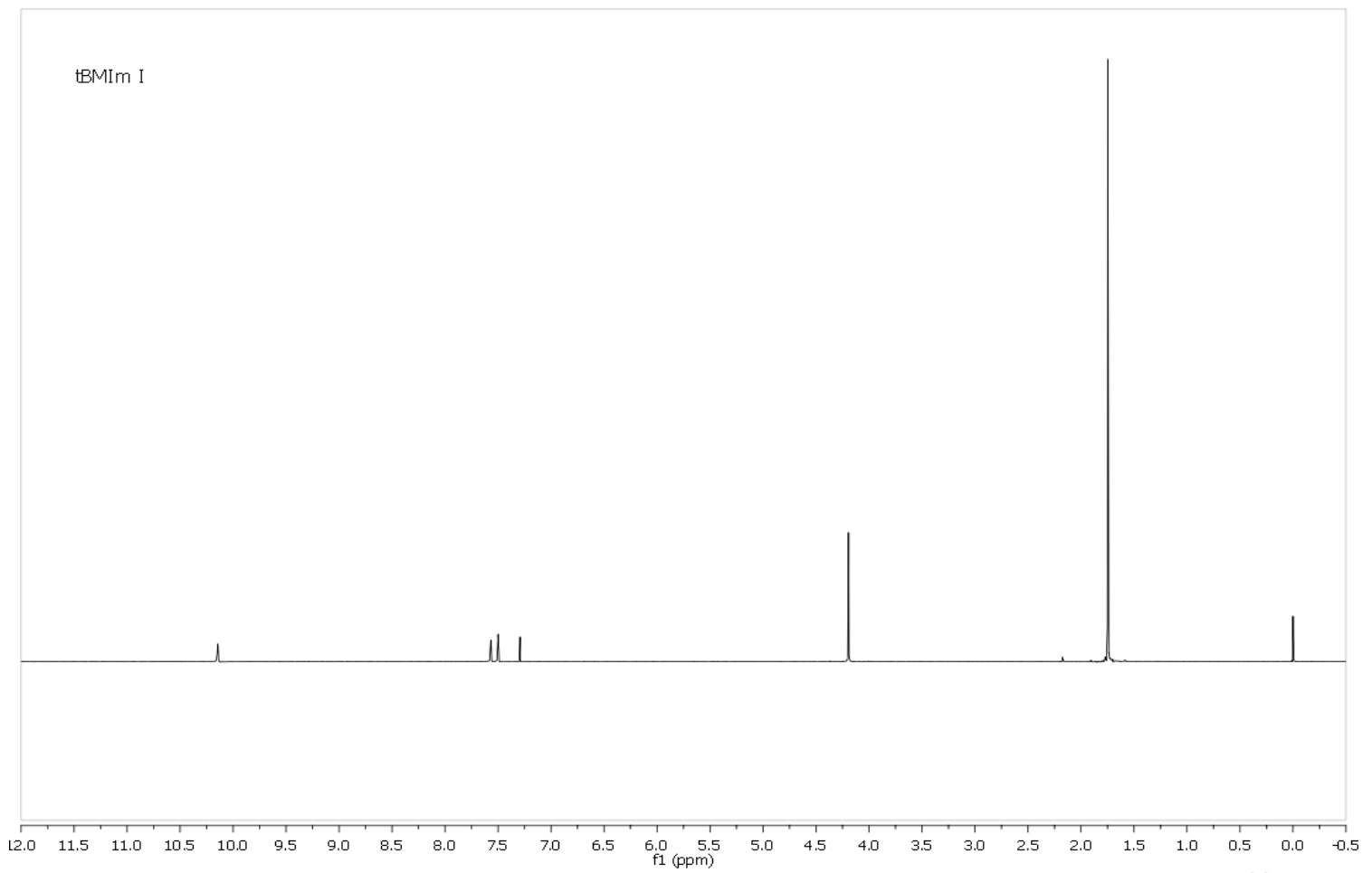
- S2 ¹H Spectra of **BMIm Br** and **BMIm I**
- S3 ¹H Spectra of **BMIm Cl** and **tBMIm I**
- S4 ¹H and ¹³C Spectra of **BMMIm Br**
- S5 ¹H and ¹³C Spectra of **HO-EMIm Br**
- S6 ¹H and ¹³C Spectra of **BMMBtr Br**
- S7 ¹H and ¹³C Spectra of **BMMIm AlCl₄**
- S8 ¹H Spectra of **BMMIm N₃** and **BMMIm HCO₃**
- S9 ¹H and ¹³C Spectra of **BMMIm OH**
- S10 ¹H Spectra of **BMIm OAc** and **BMIm malonate**
- S11 ¹H and ¹³C Spectra of **BMIm EMOAc**
- S12 ¹H and ¹³C Spectra of **BMIm HCO₃**
- S13 ¹H Spectra of **BMIm pro** and **BMIm benzo**
- S14 ¹H and ¹³C Spectra of **BMIm o-CF₃benzo**
- S15 ¹H Spectra of **NaSO₃(CH₂)₂Im(CH₂)₂SO₃** and **MIm(CH₂)₂SO₃**
- S16 ¹H Spectra of **MIm(CH₂)₃SO₃** and styrene carbonate
- S17 ¹H Spectra of cyclohexene carbonate and optimized geometry of **Complex 1**
- S18 Optimized geometries of **TS 1** and **Int. 1**
- S19 Optimized geometries of **Int. 2** and **TS 2**
- S20 Optimized geometries of **Int. 3** and **TS 3**
- S21 Optimized geometry of **Complex 2**



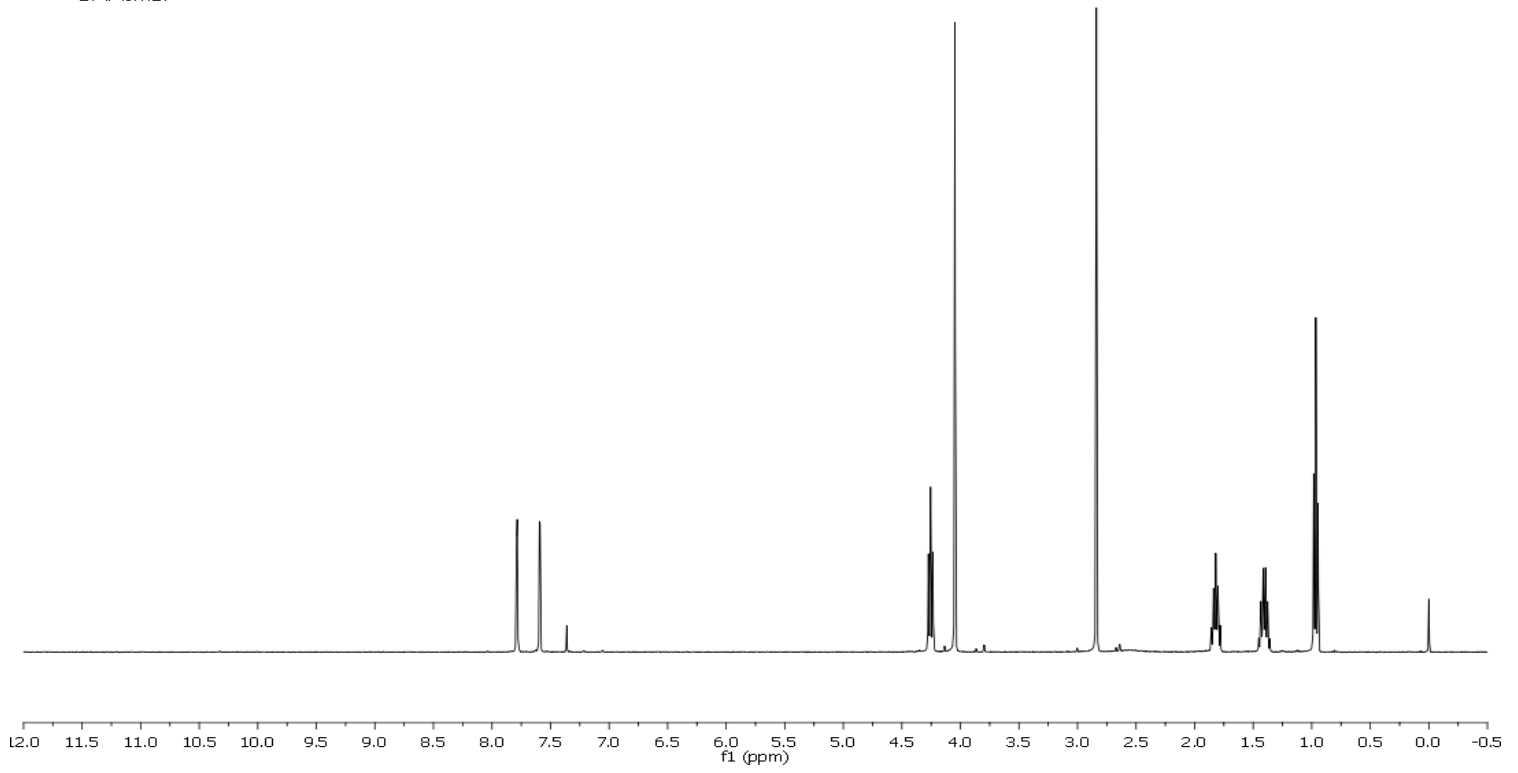
BMim Cl



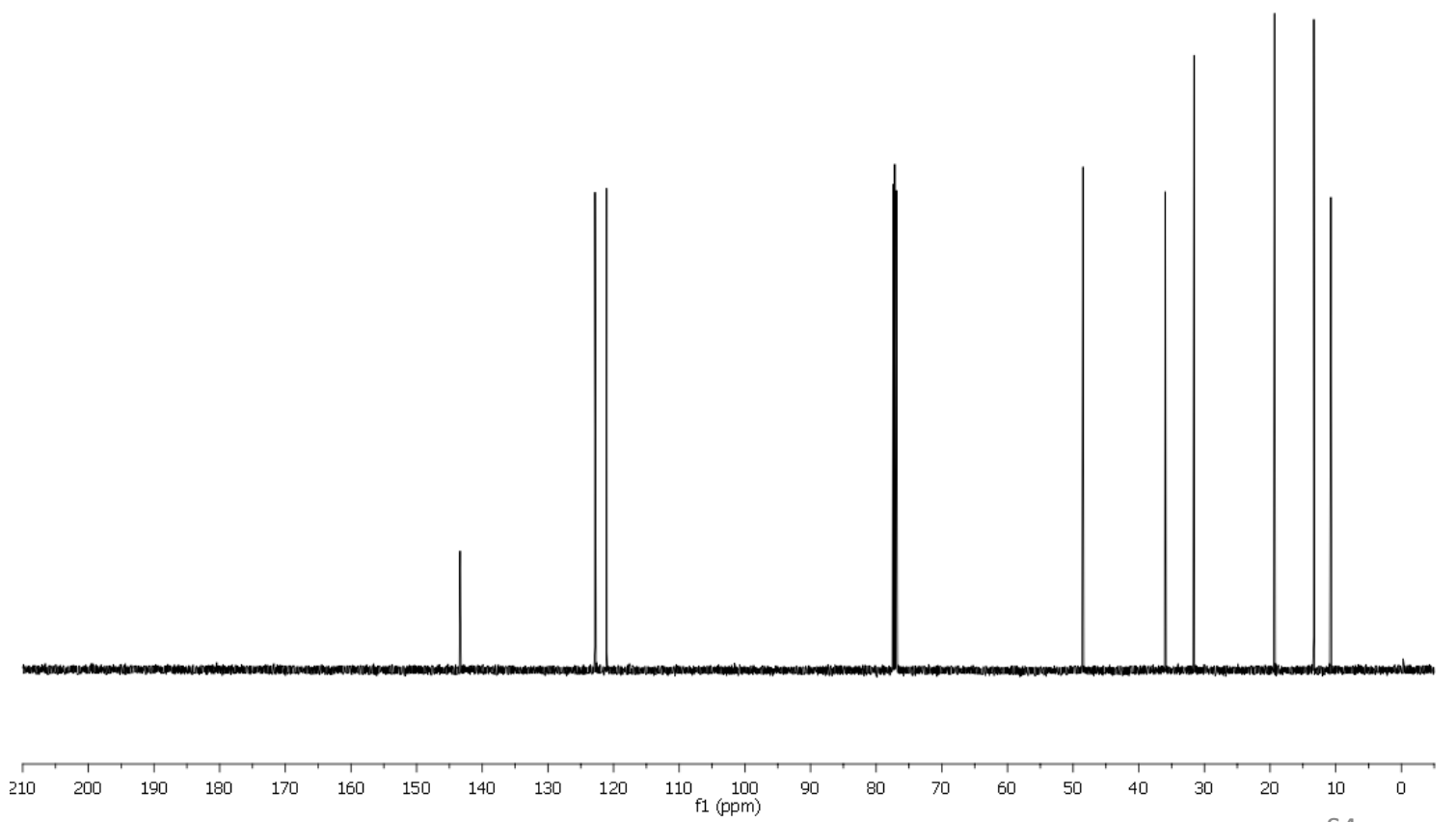
tBMIm I



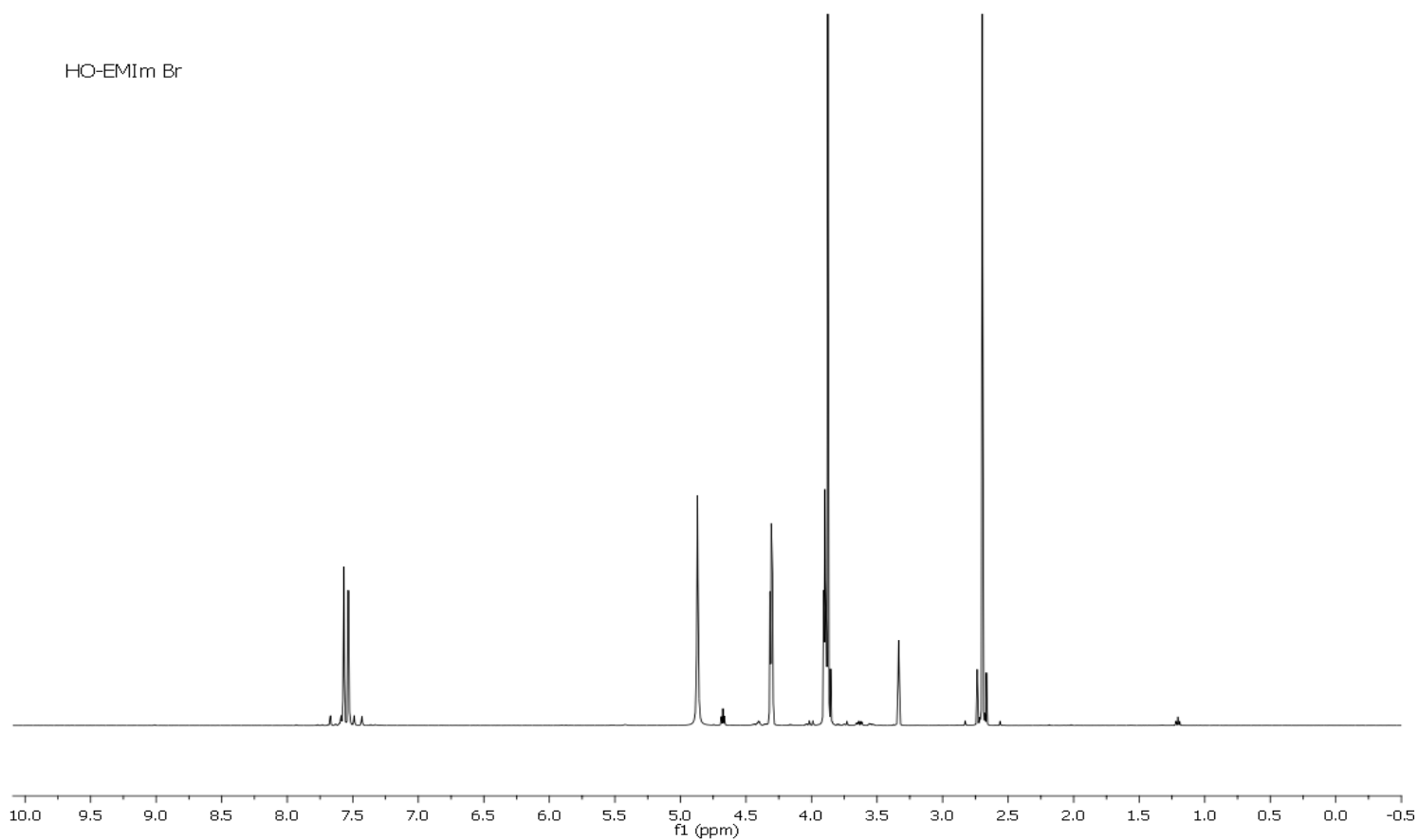
BMMImBr



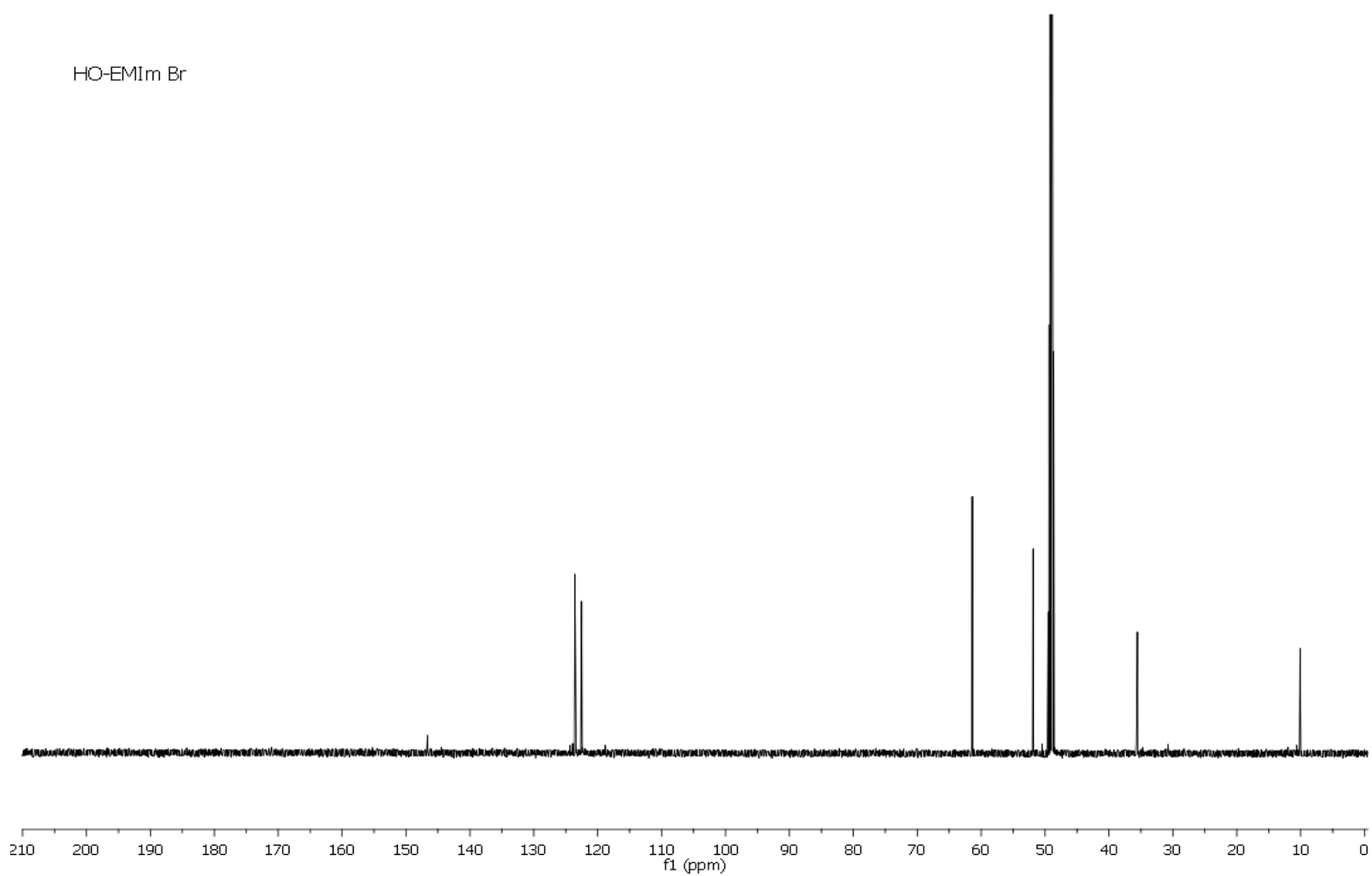
BMMImBr



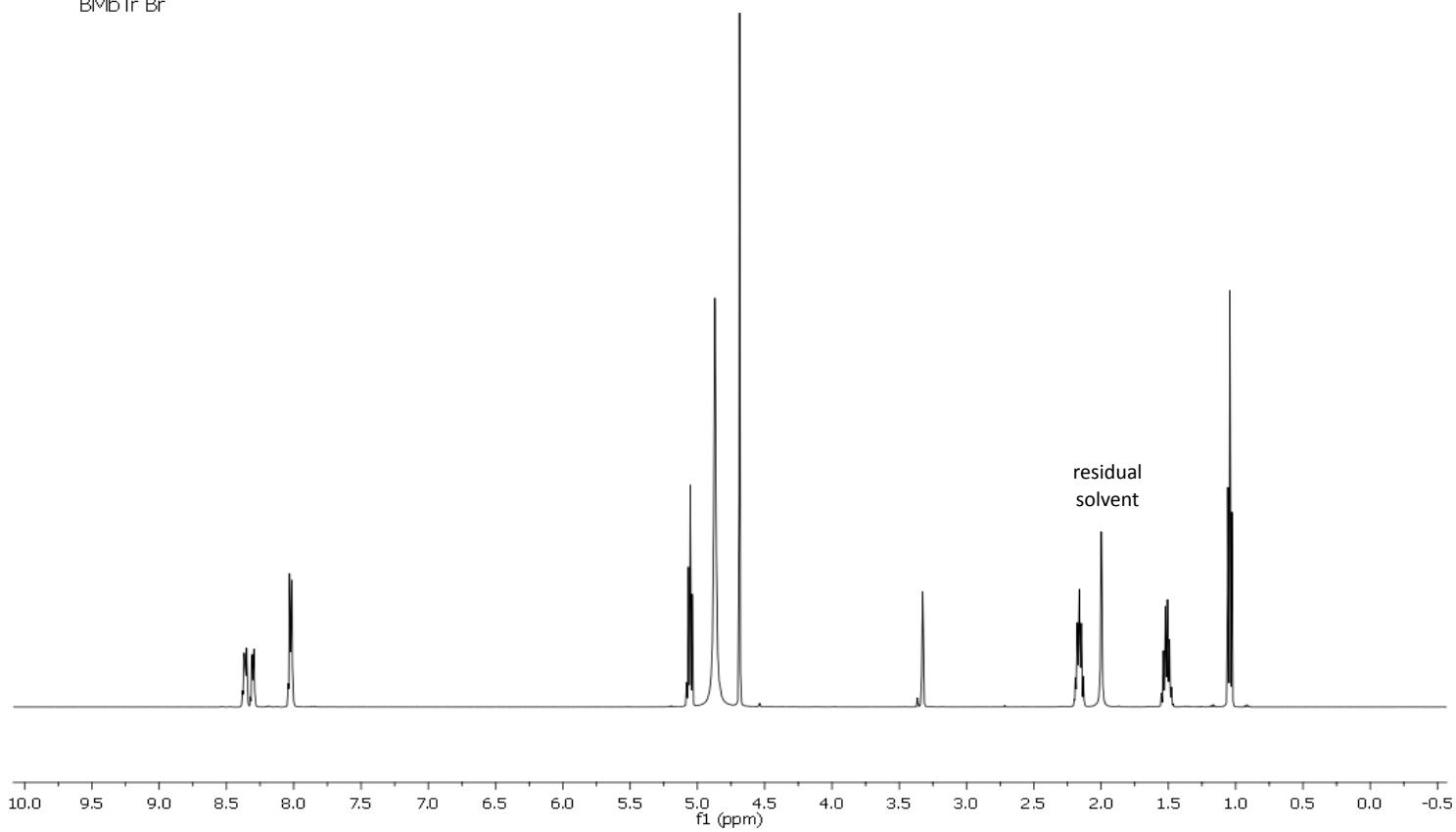
HO-EMIm Br



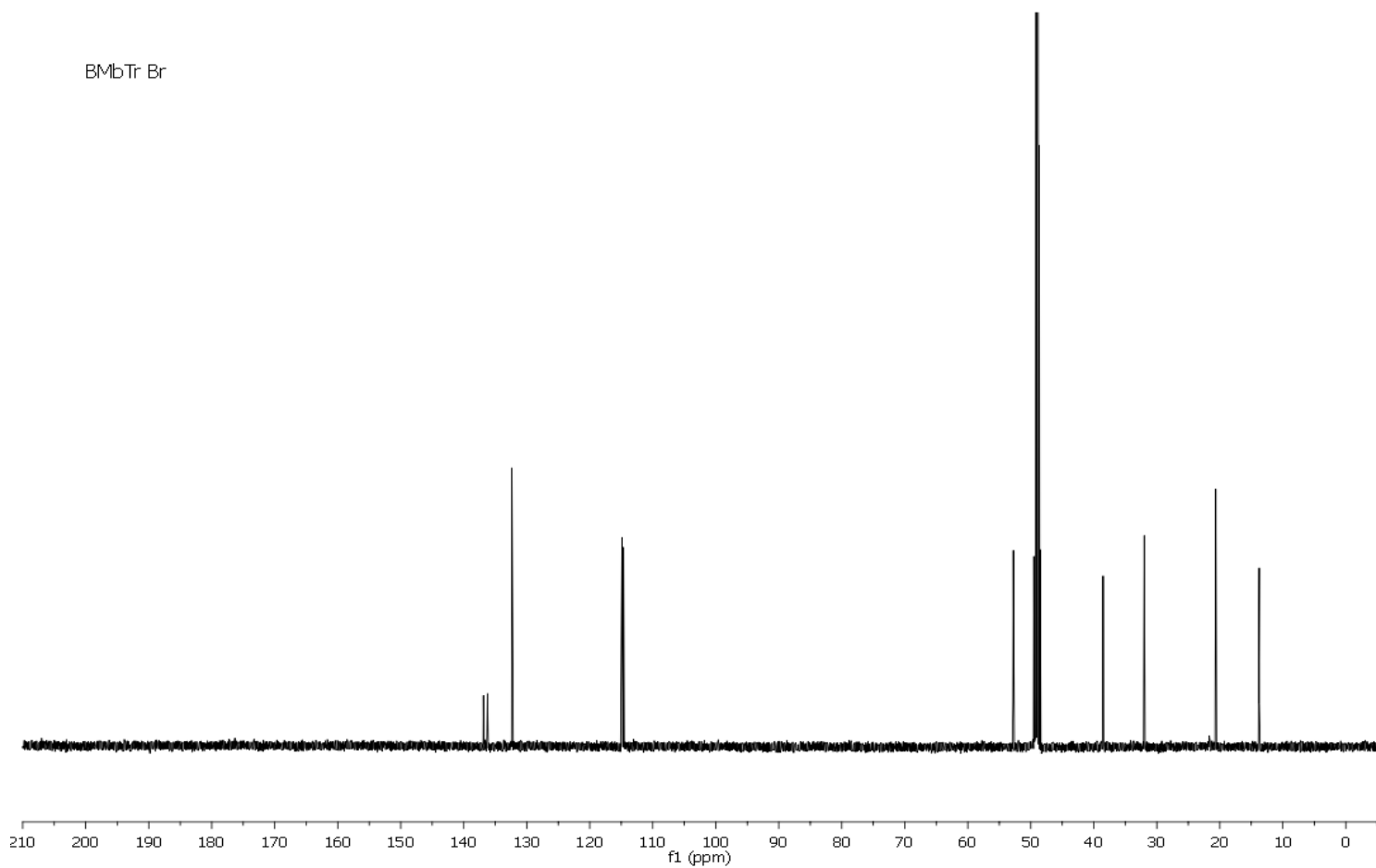
HO-EMIm Br



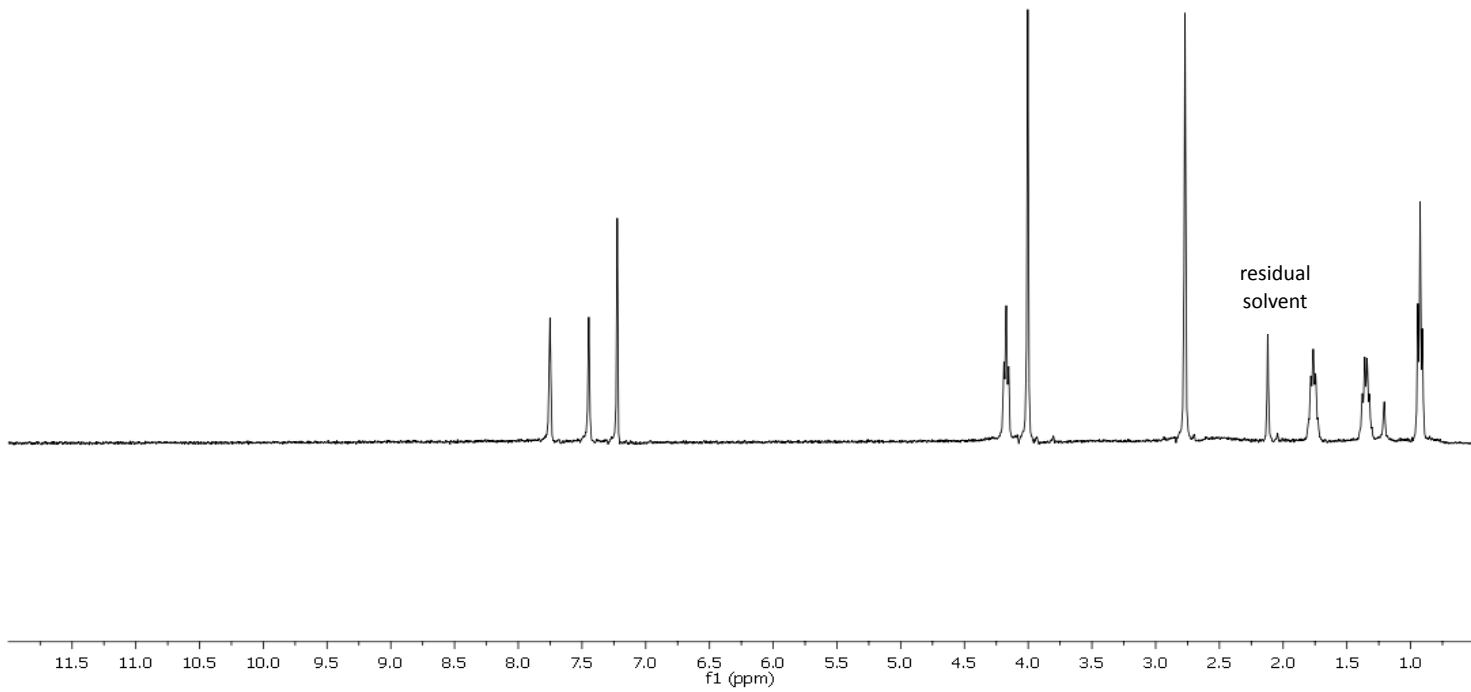
BMbTr Br



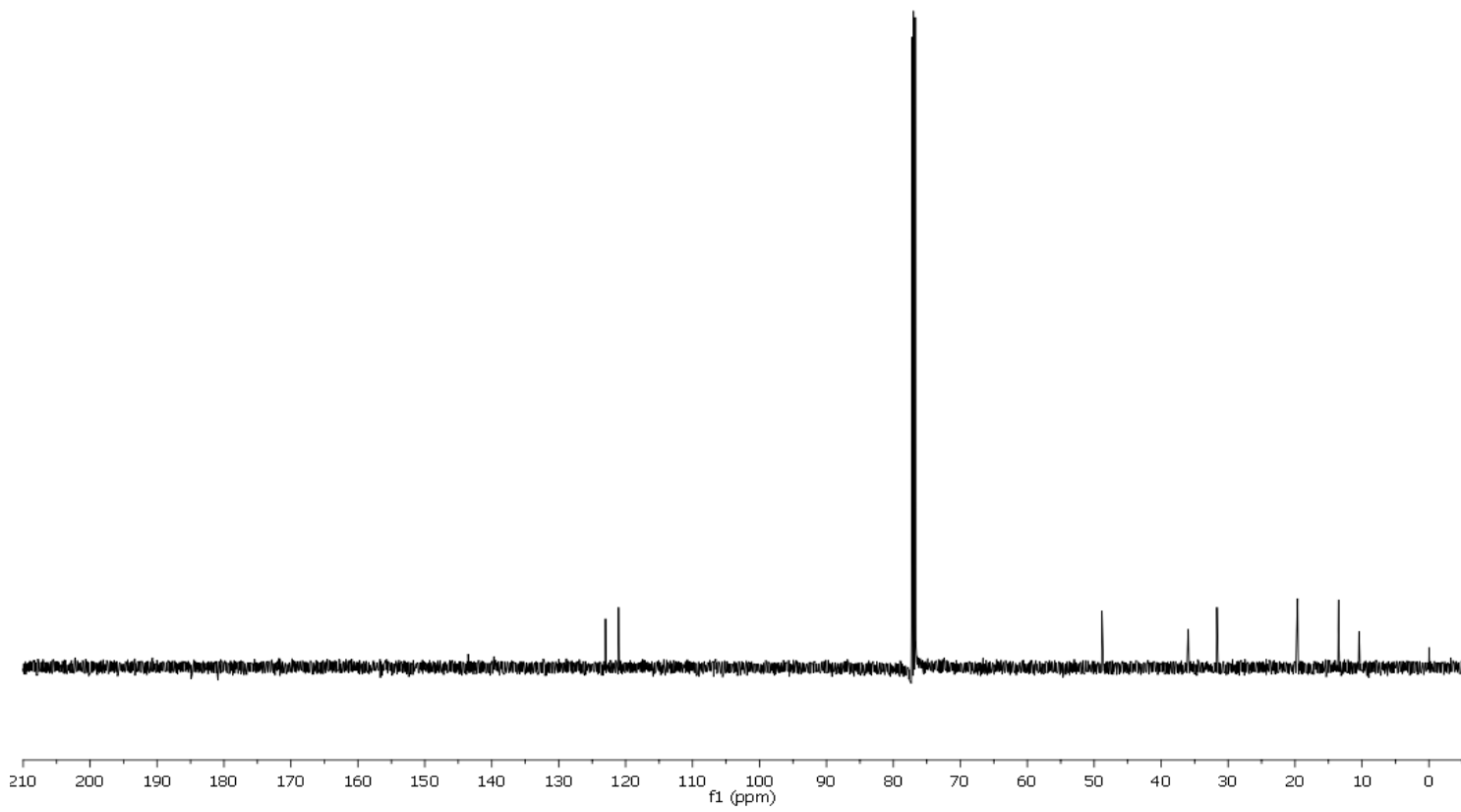
BMbTr Br



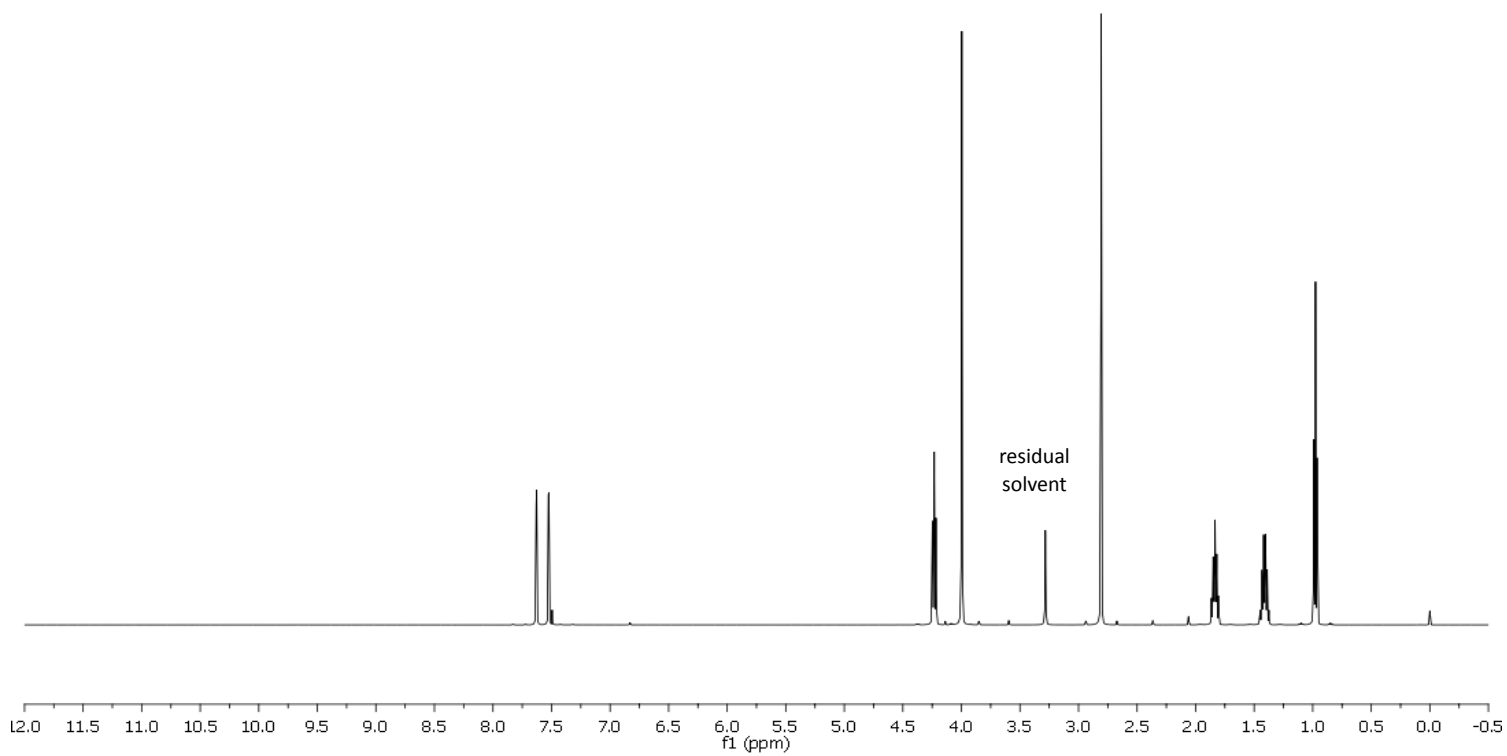
BMMIm AlCl4



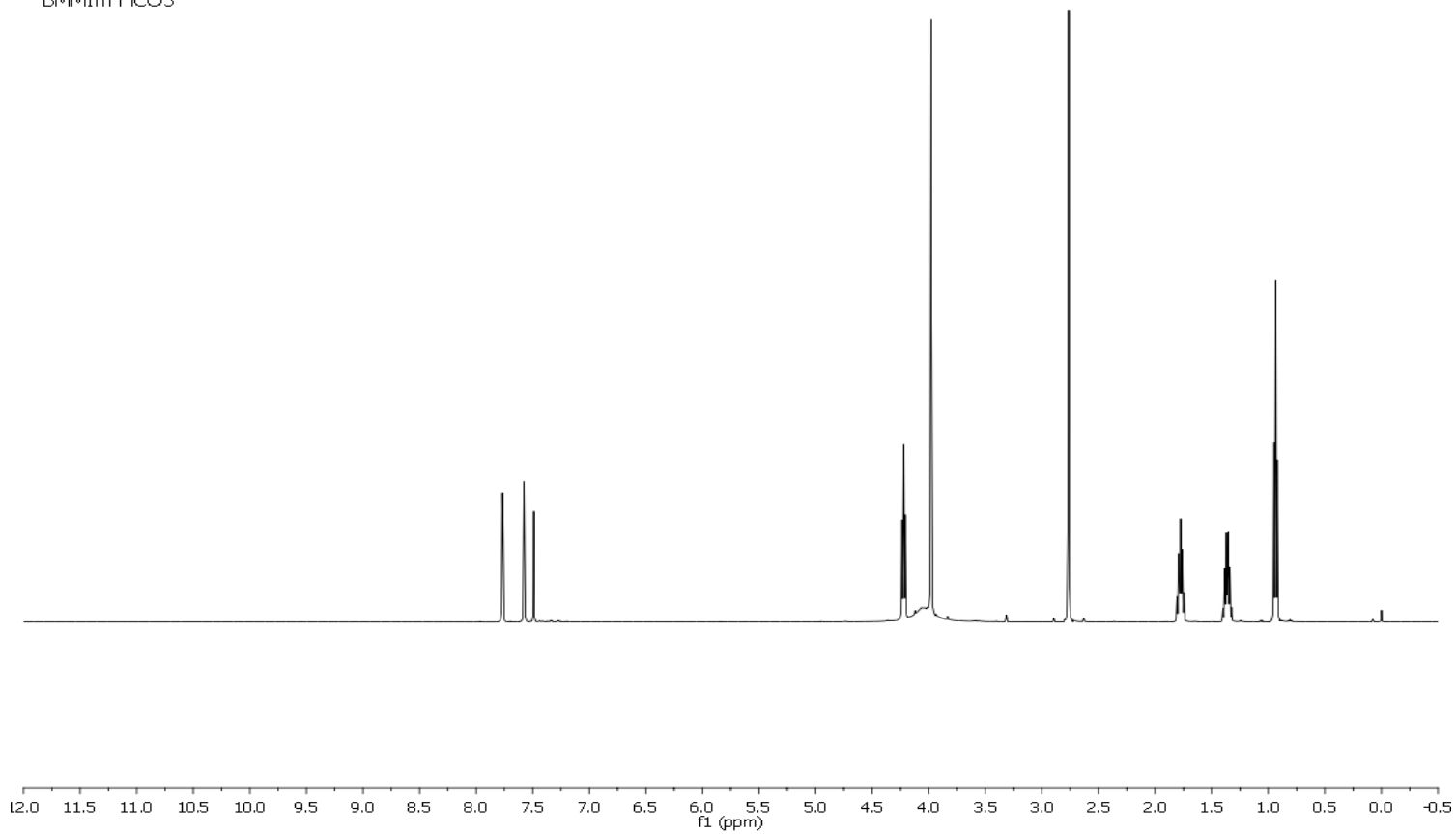
BMMIm AlCl4



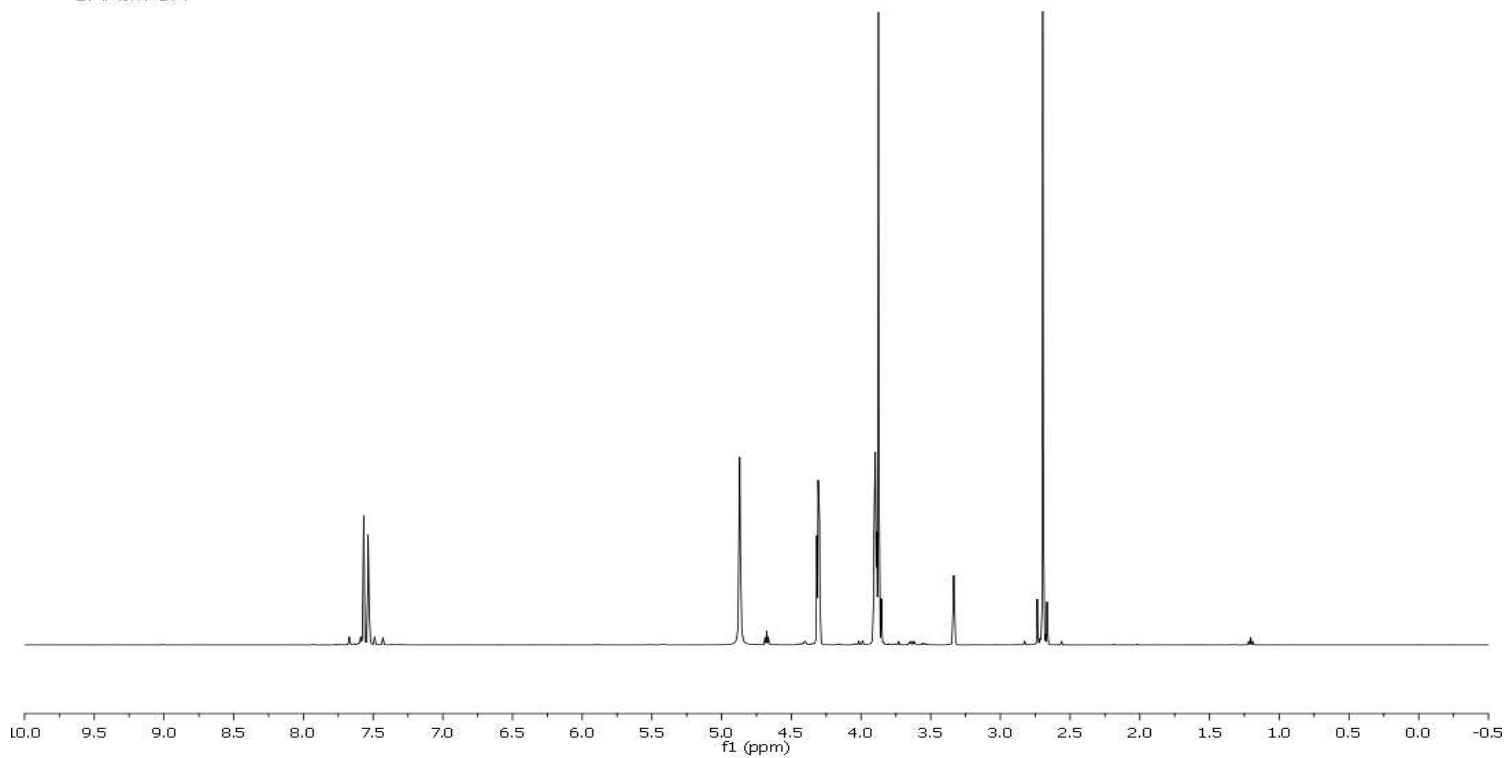
BMIm N3



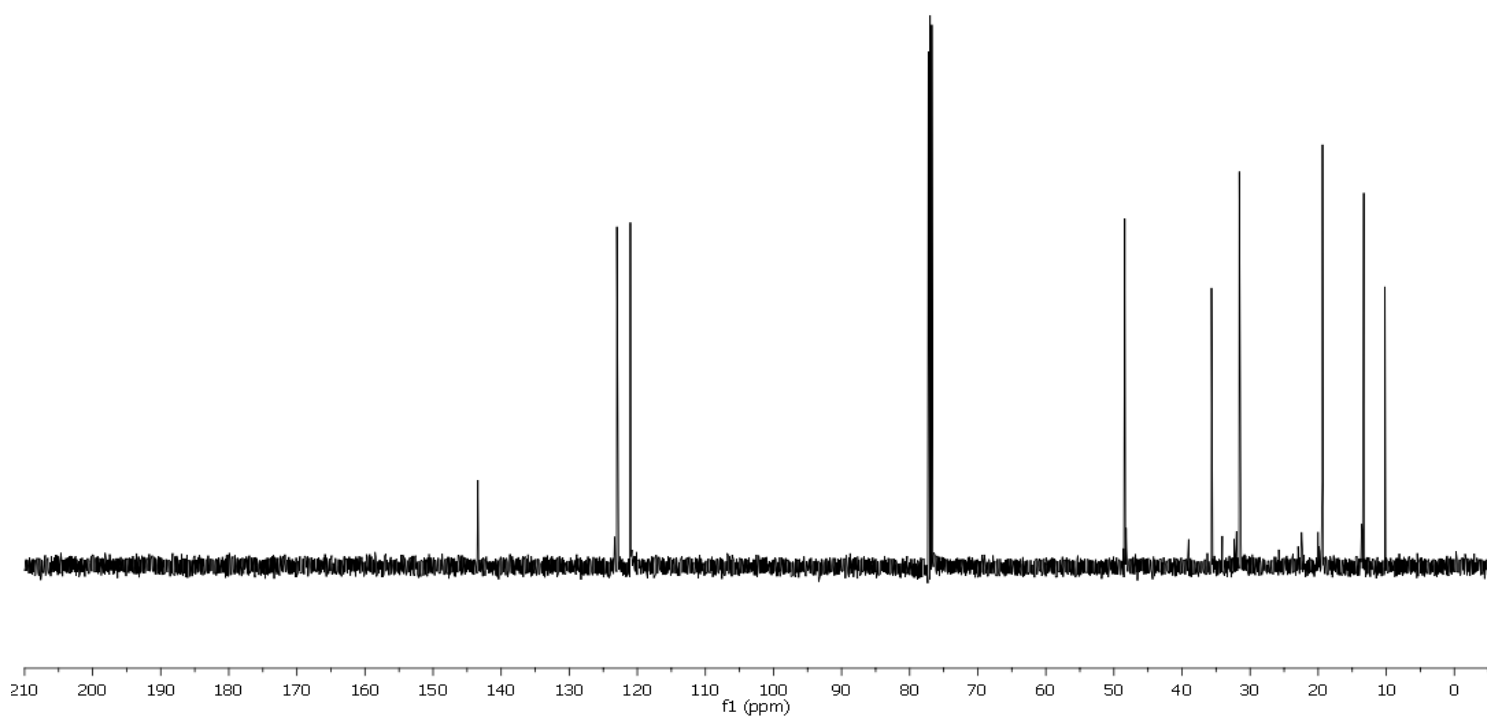
BMIm HCO₃

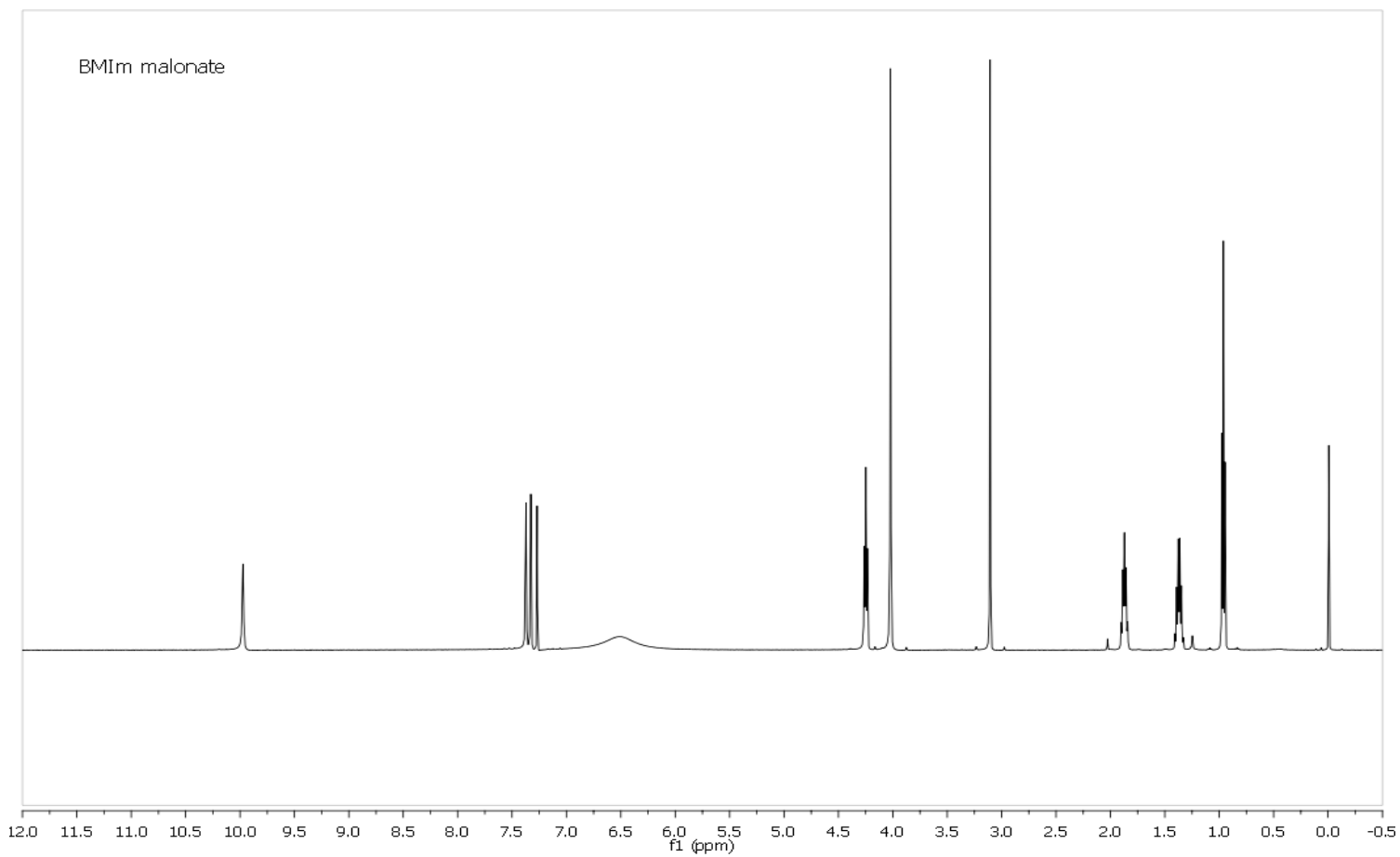
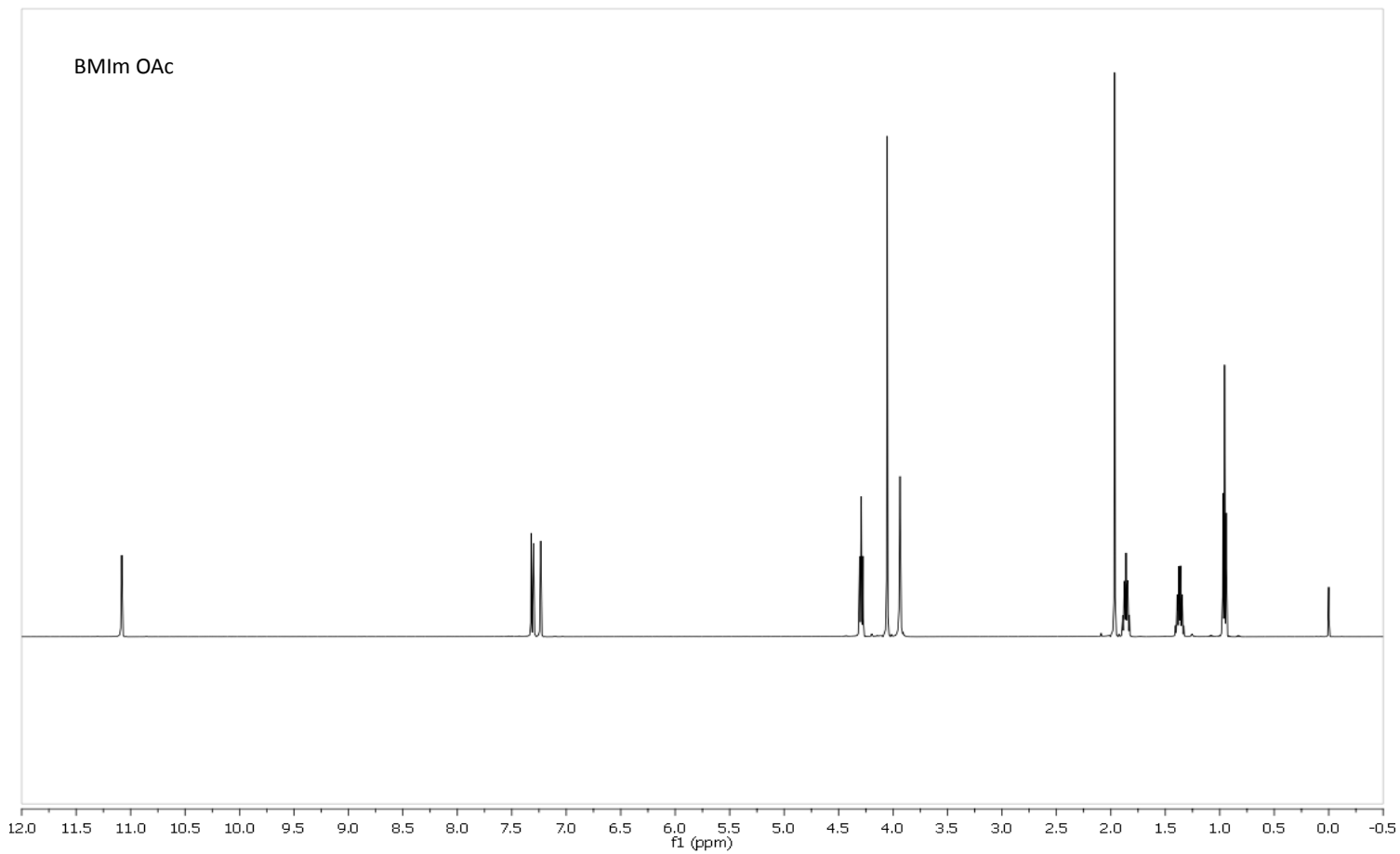


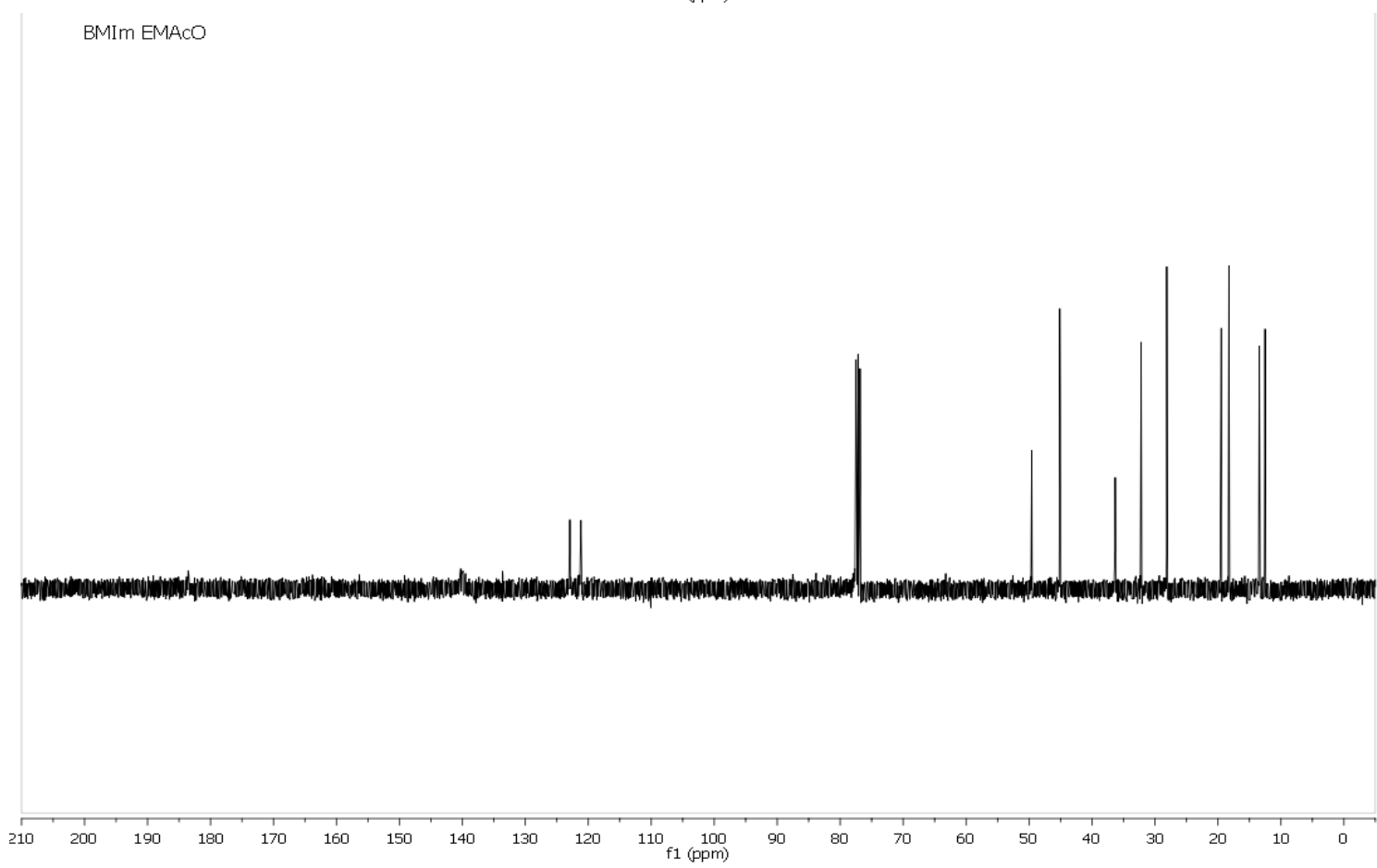
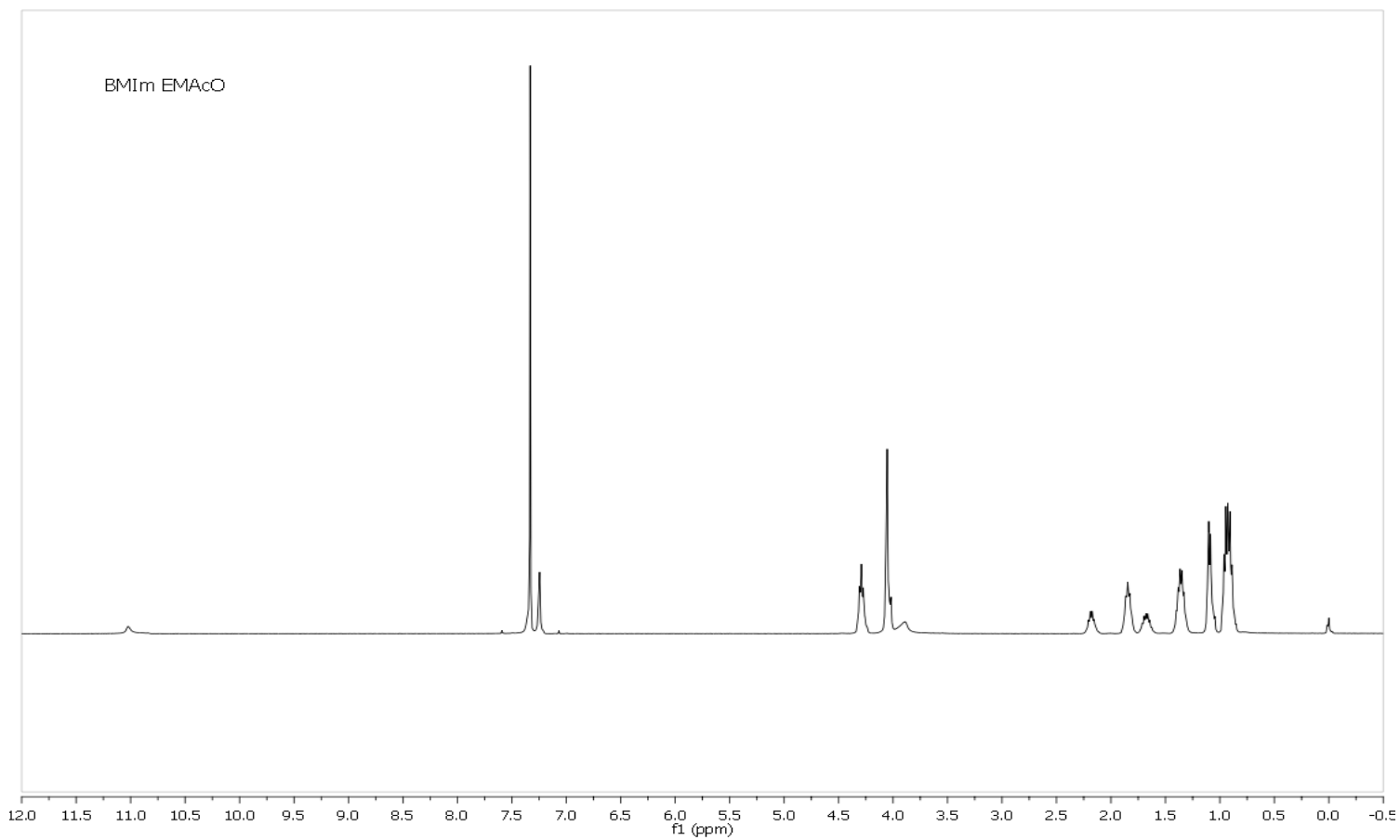
BMMIm OH



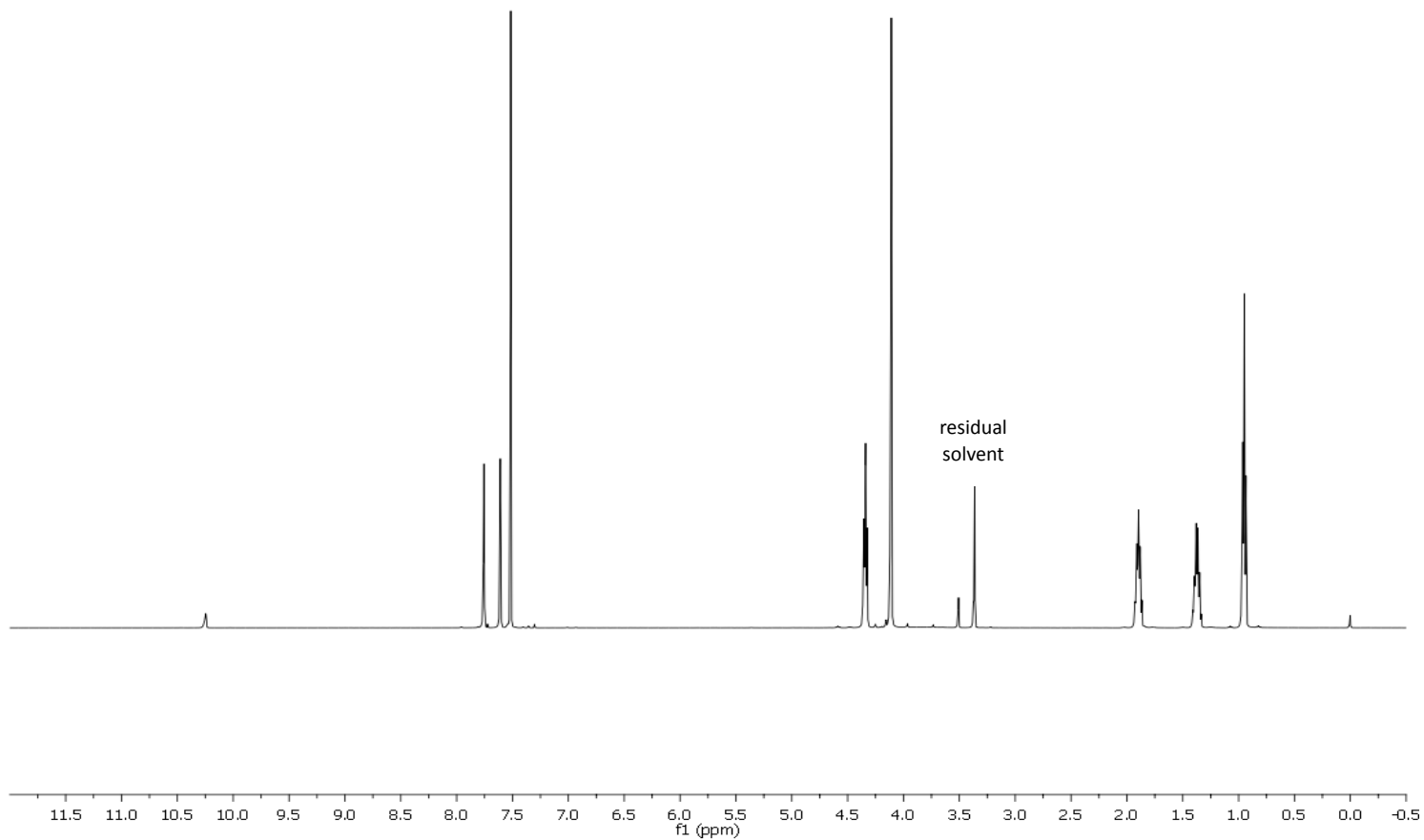
BMMIm OH



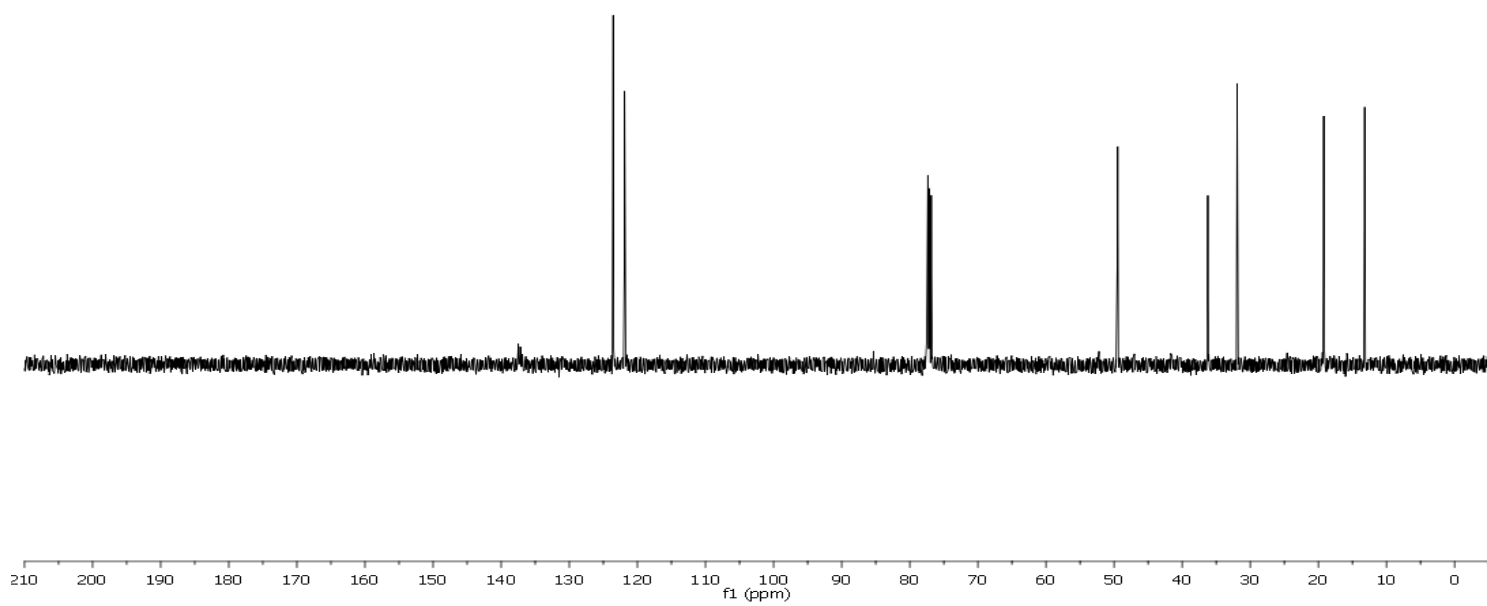


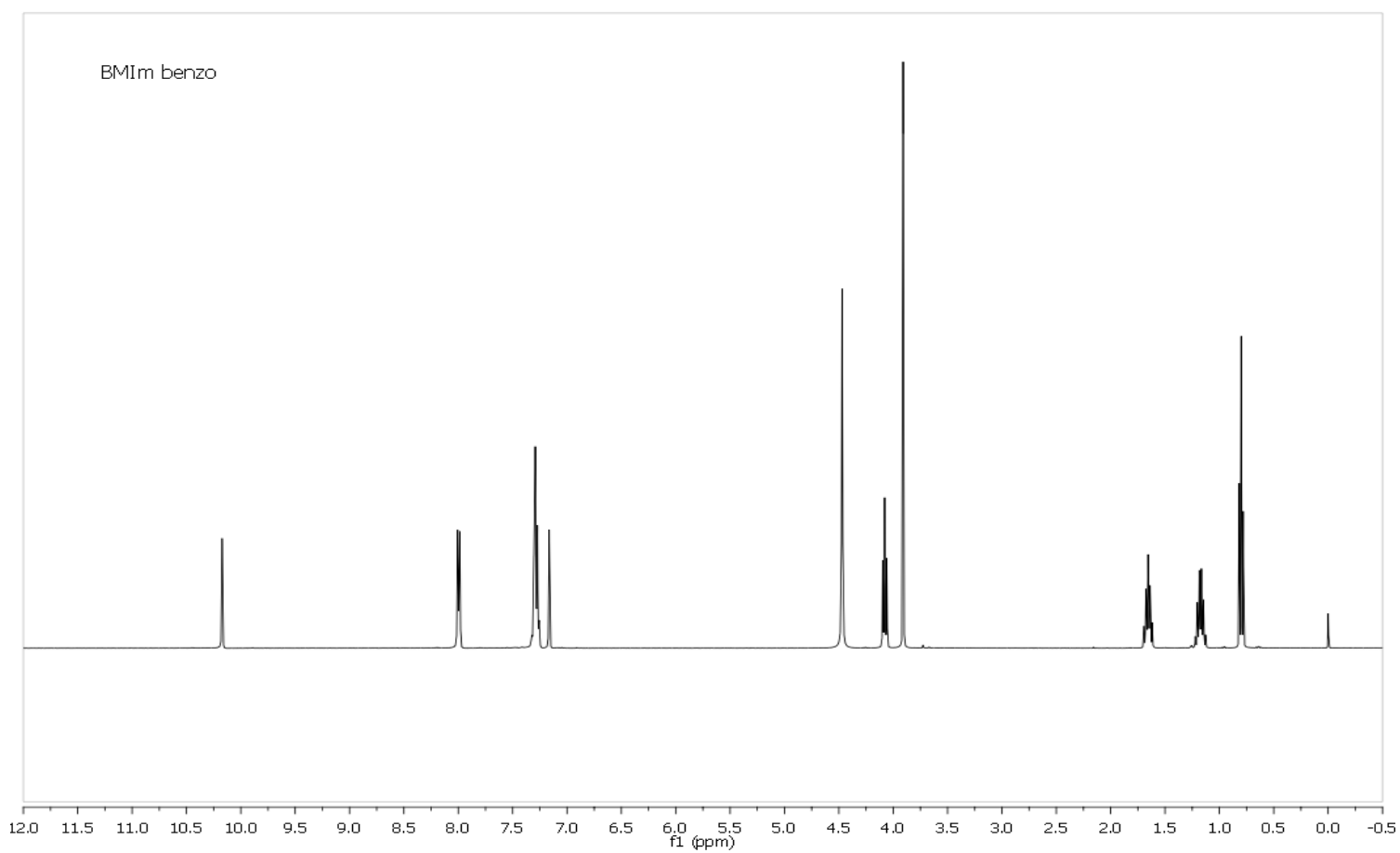
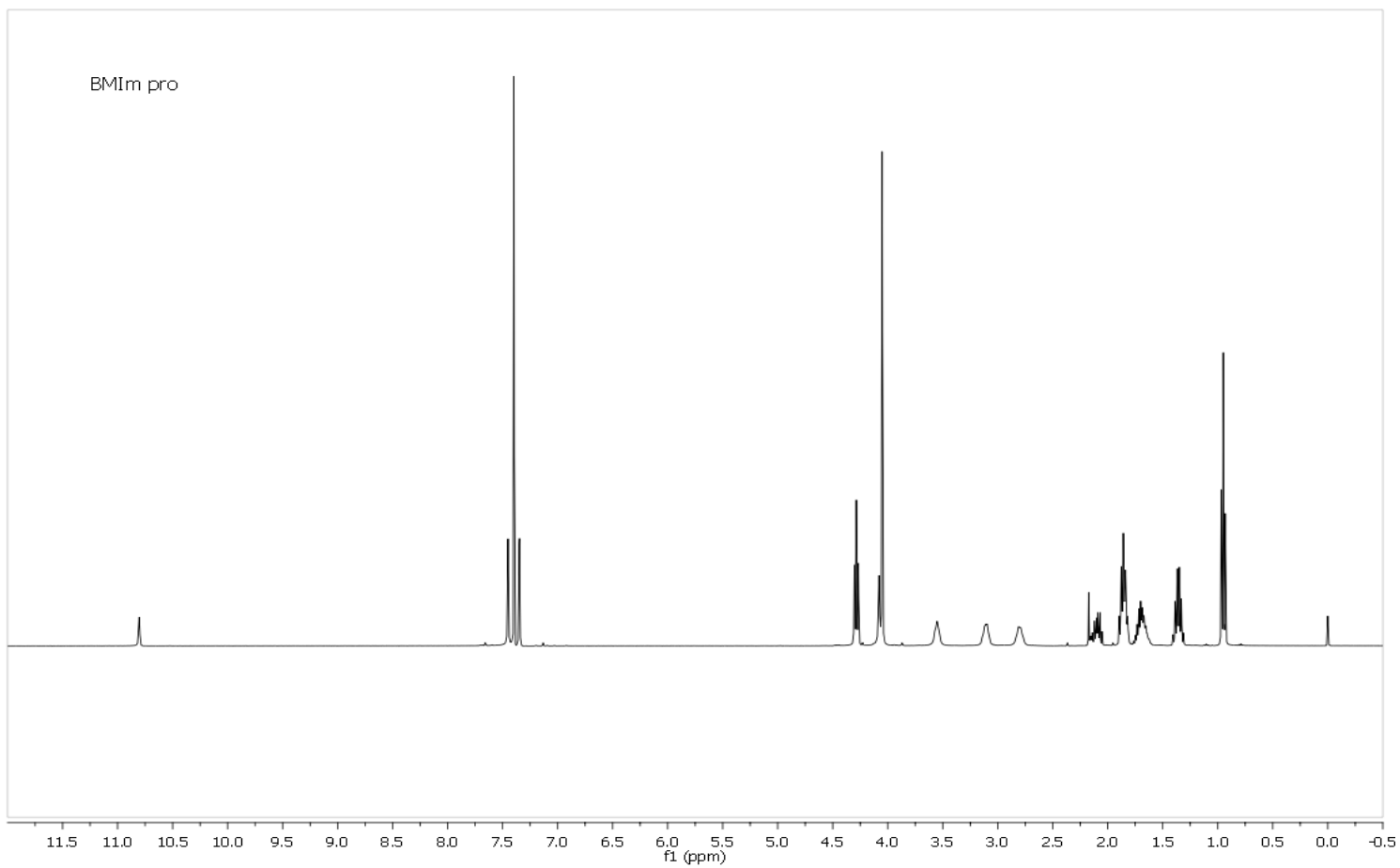


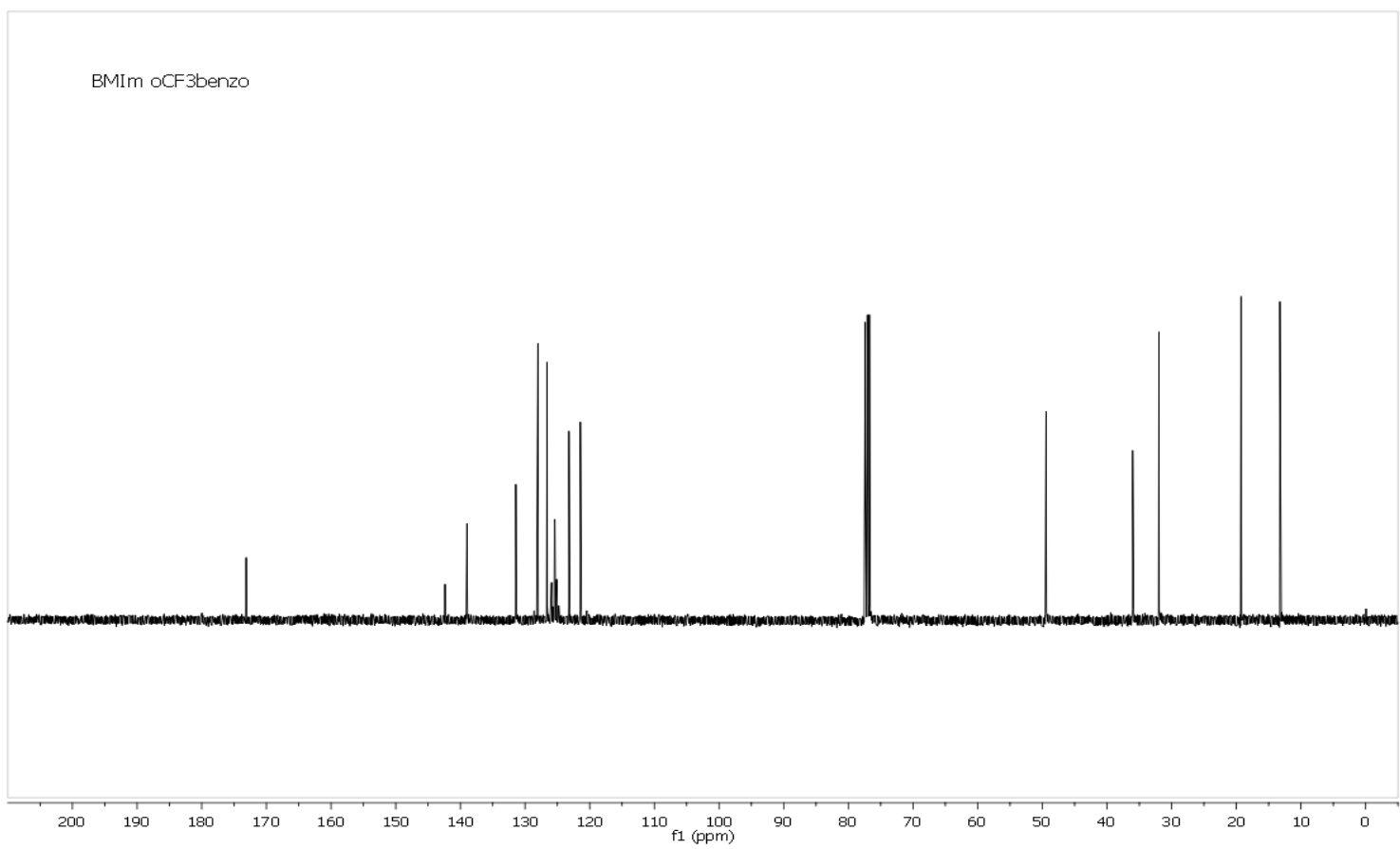
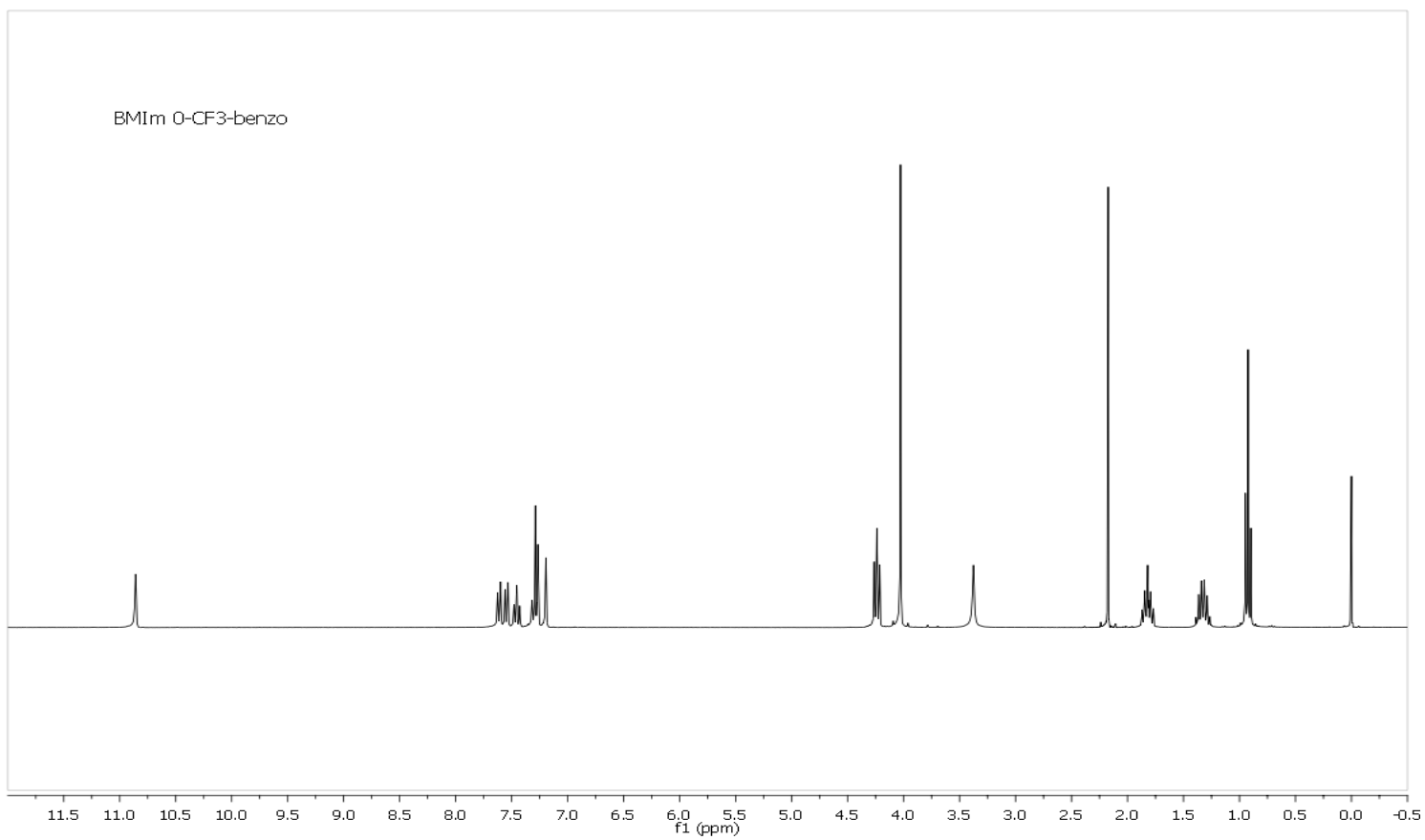
BMIIm HCO3

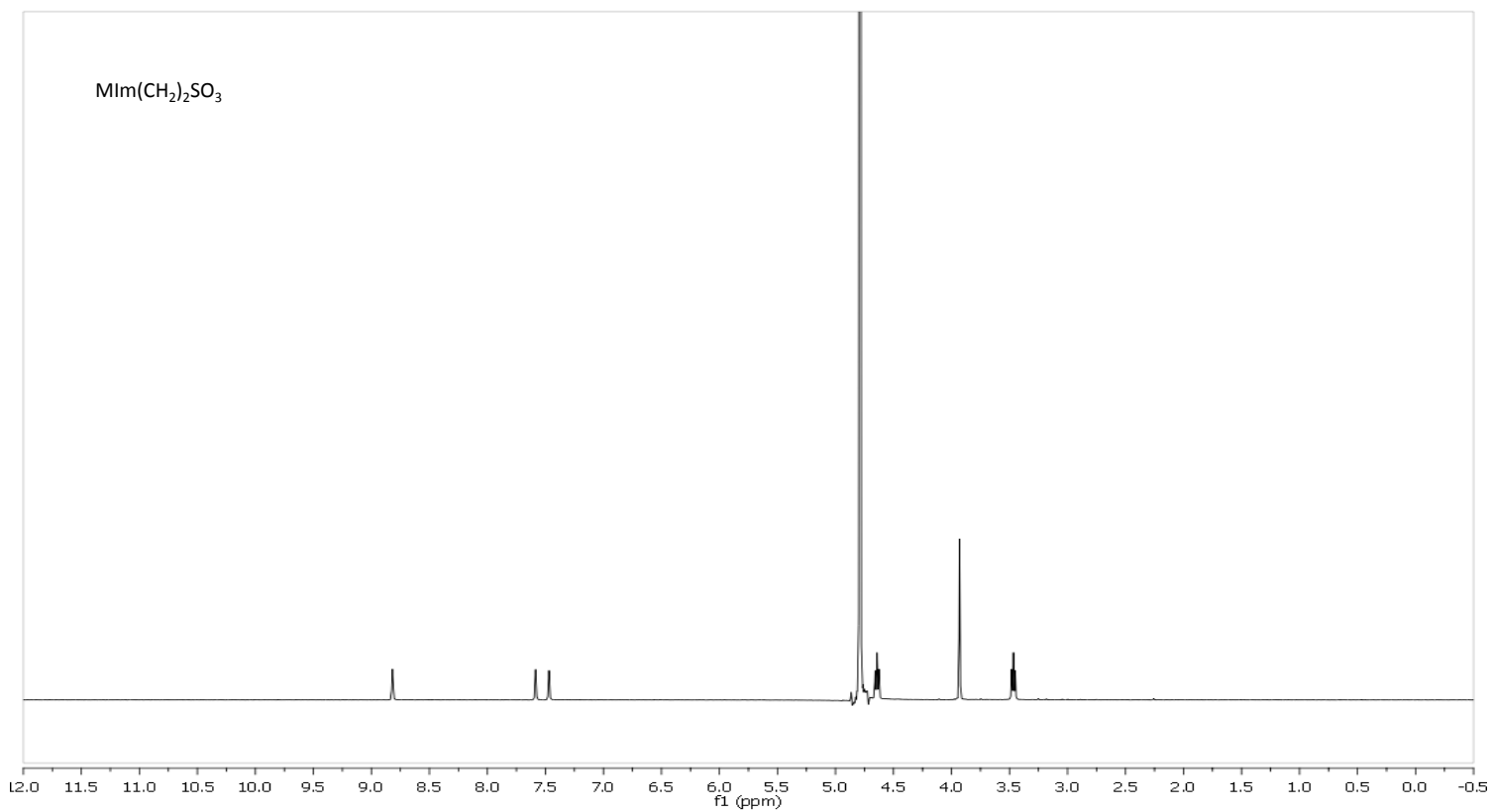
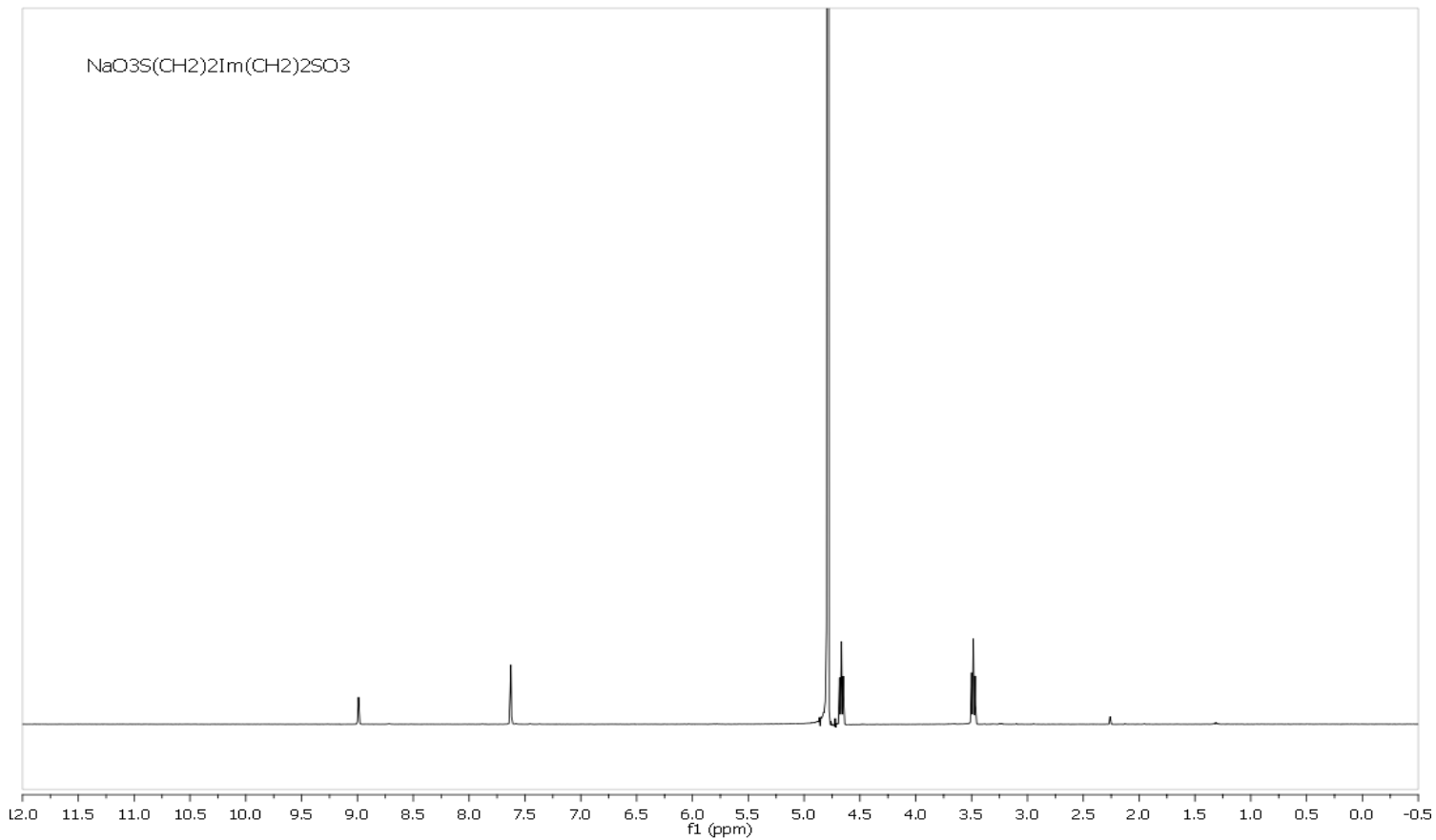


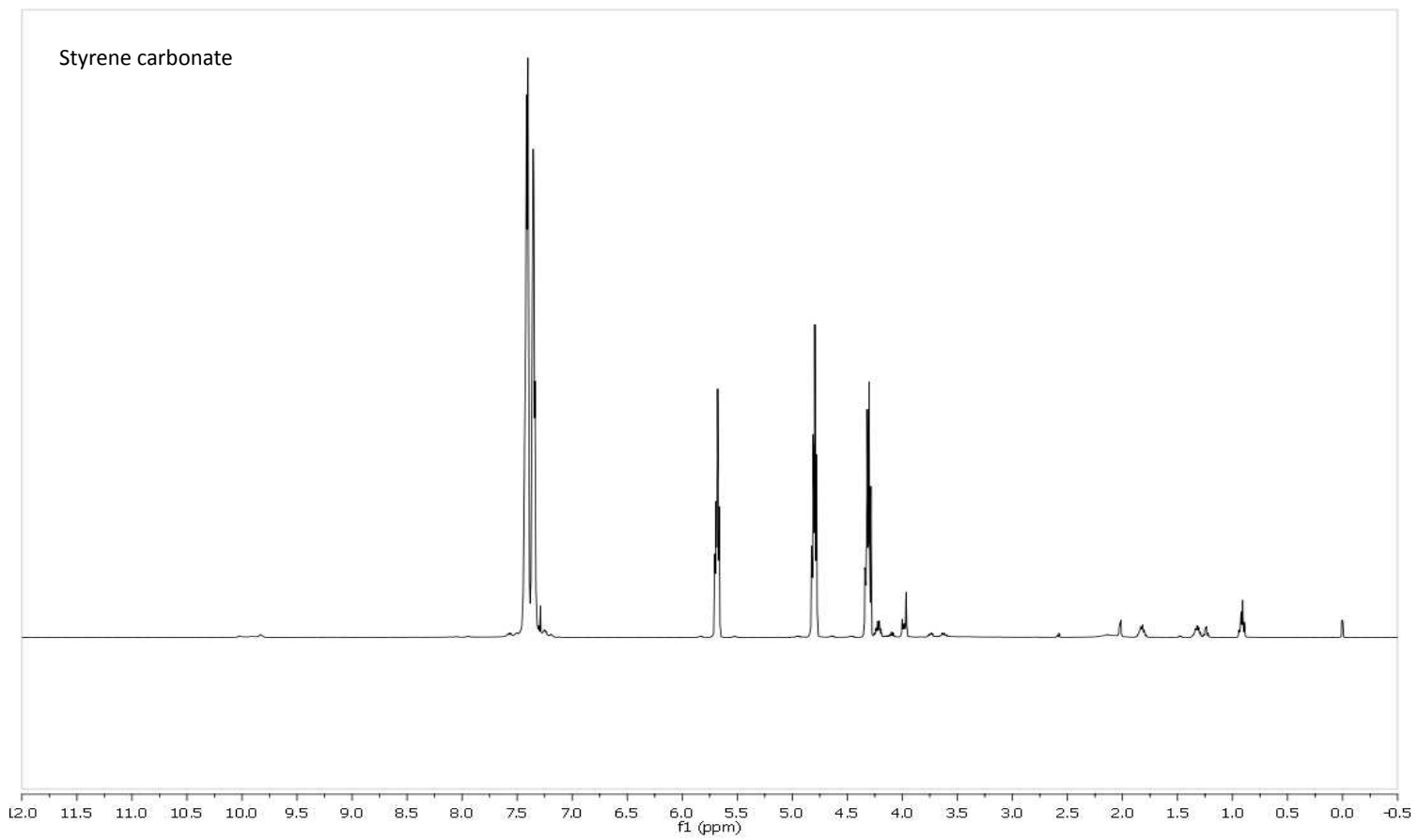
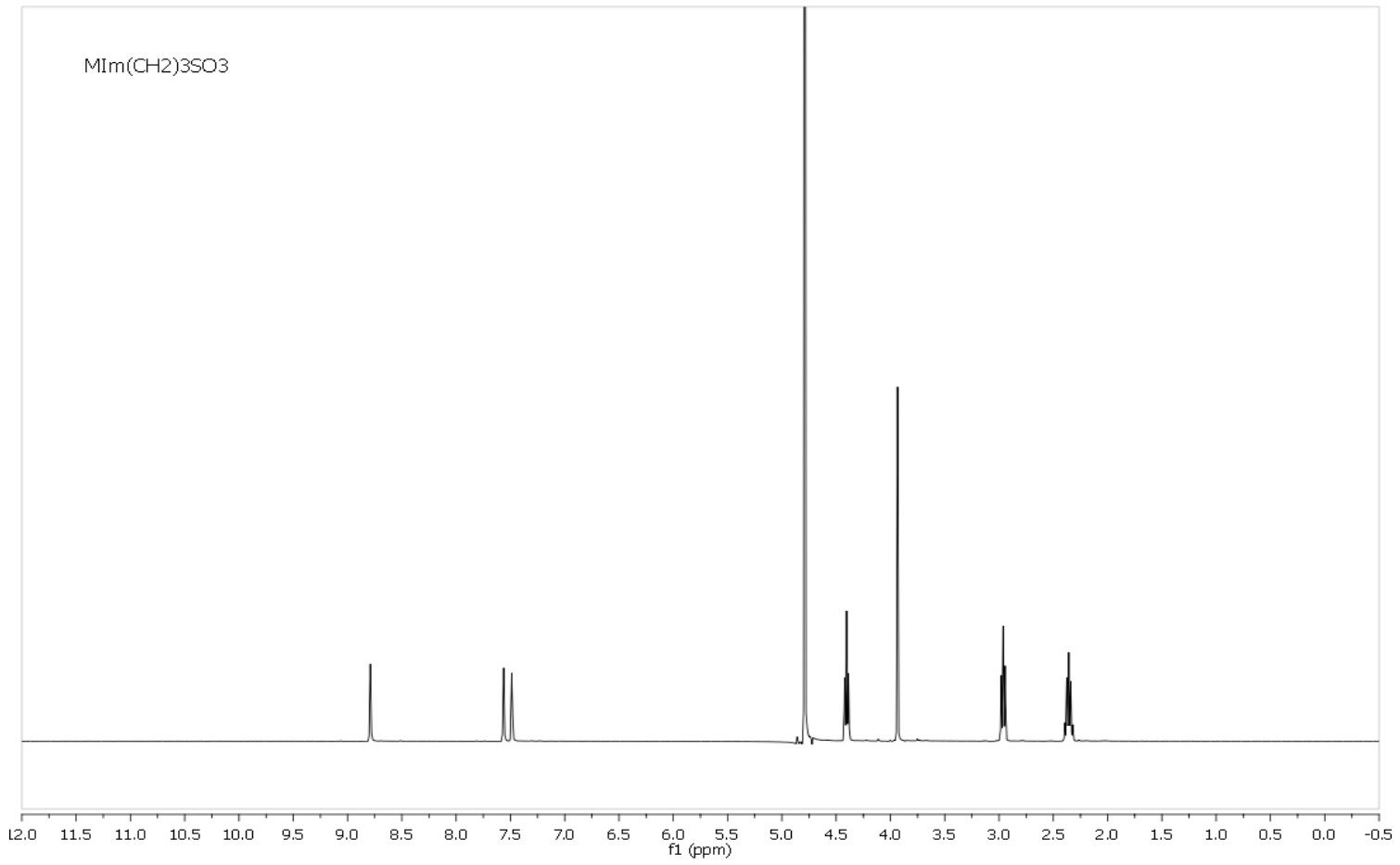
BMIIm HCO3

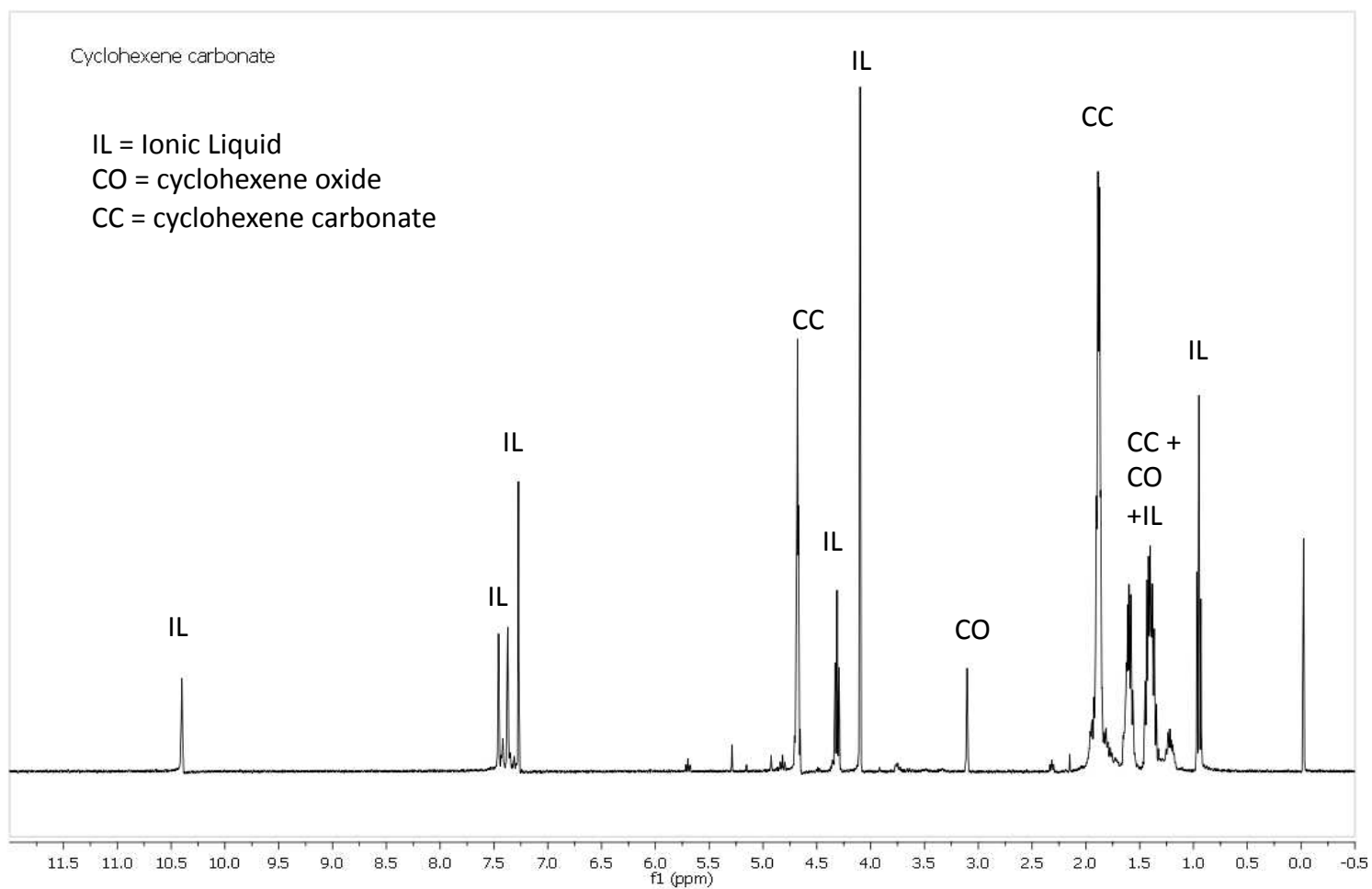




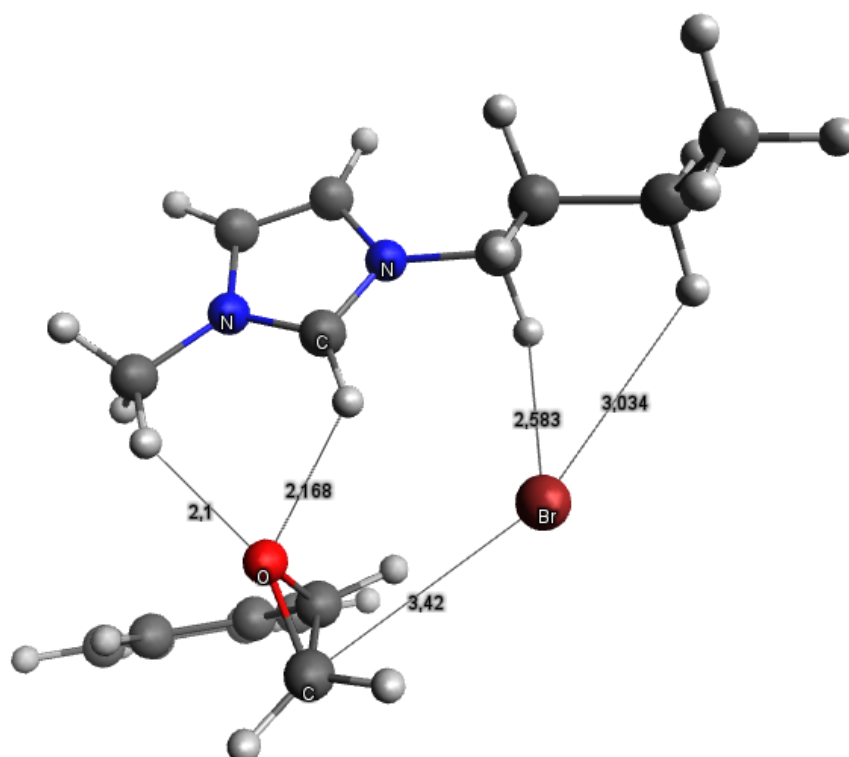




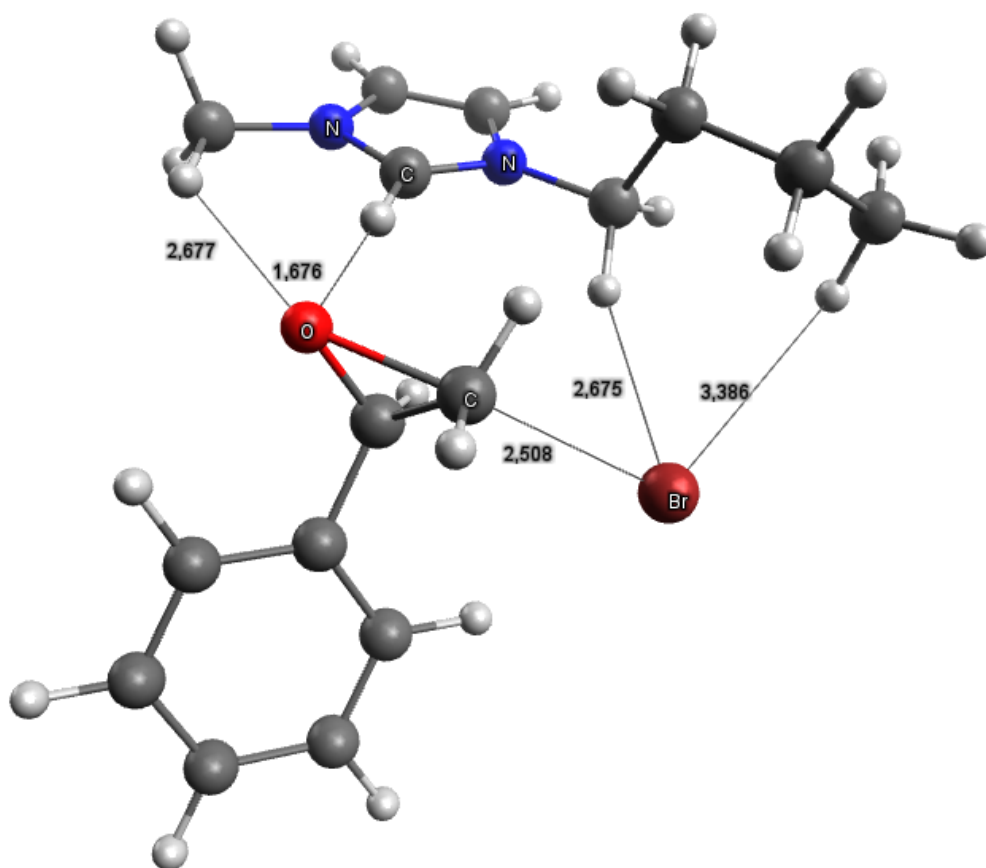




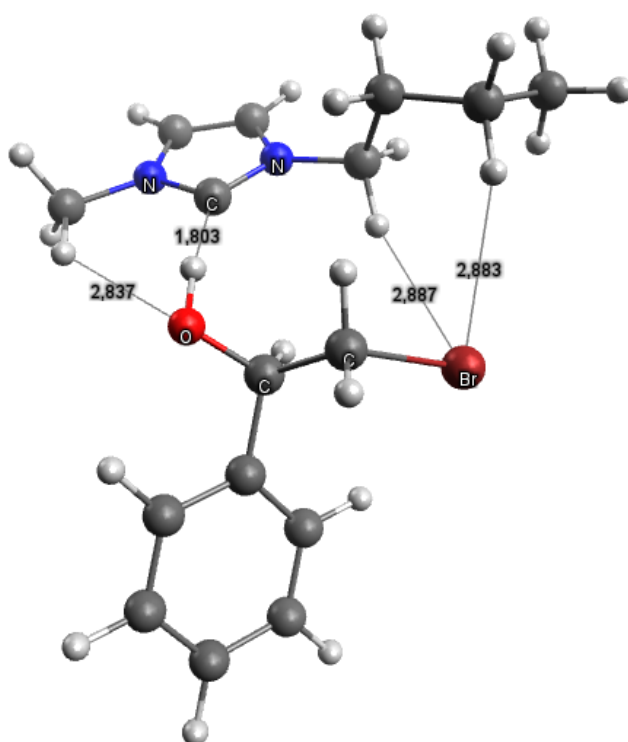
Complex 1



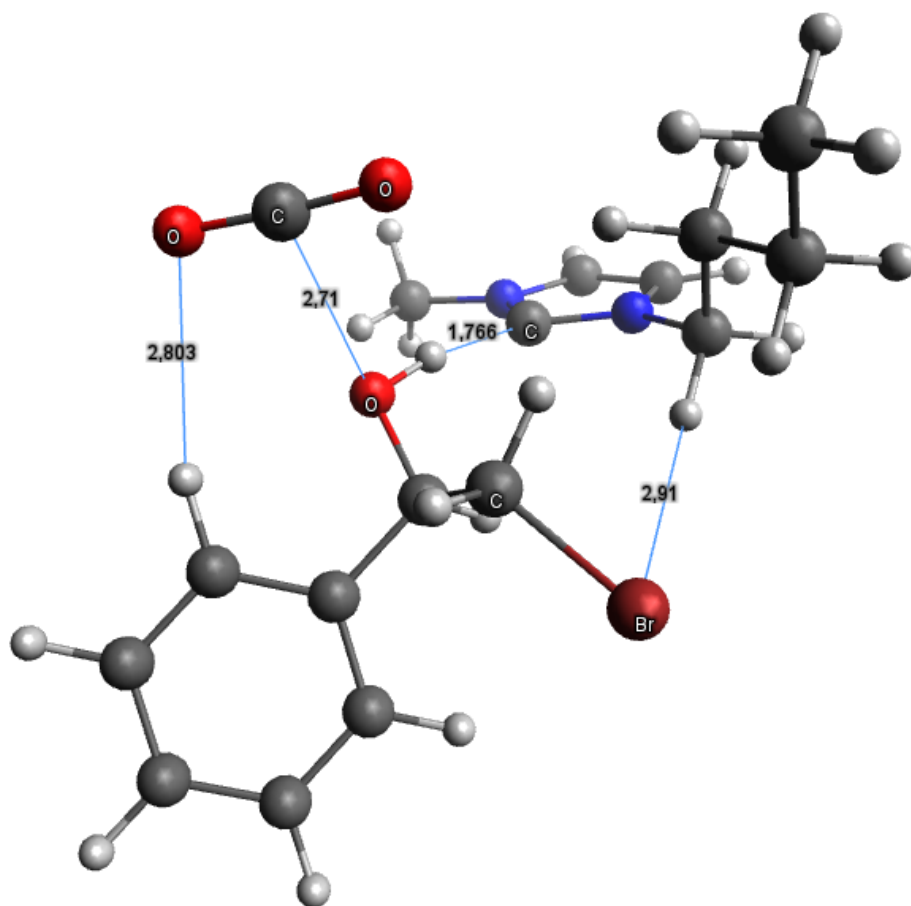
TS 1



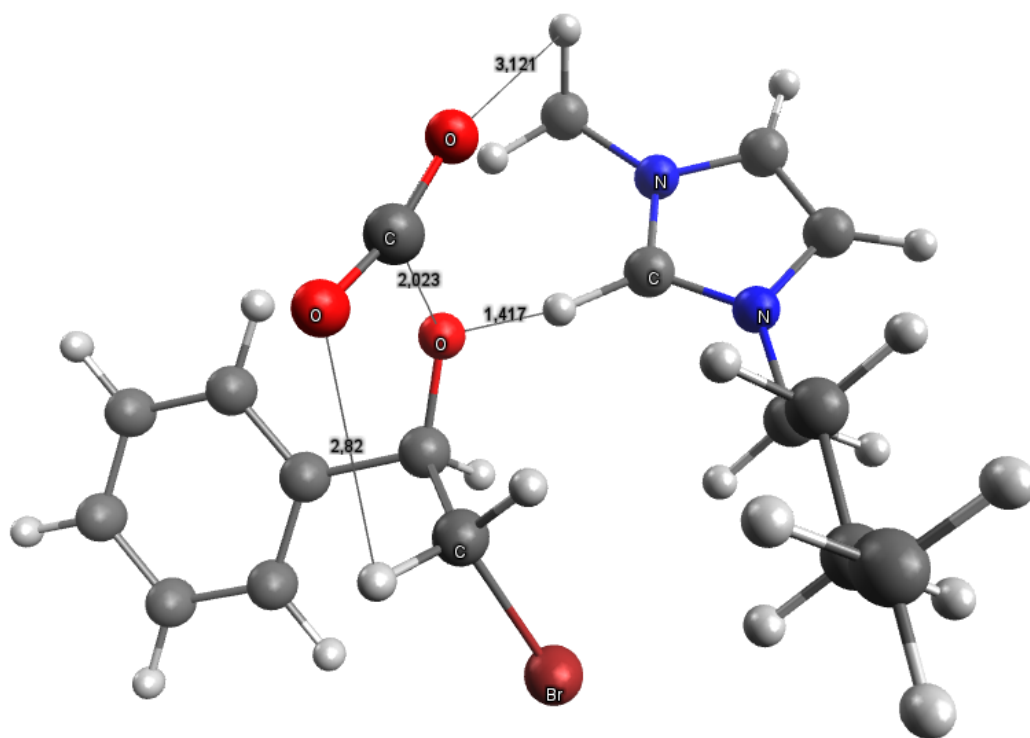
Int. 1



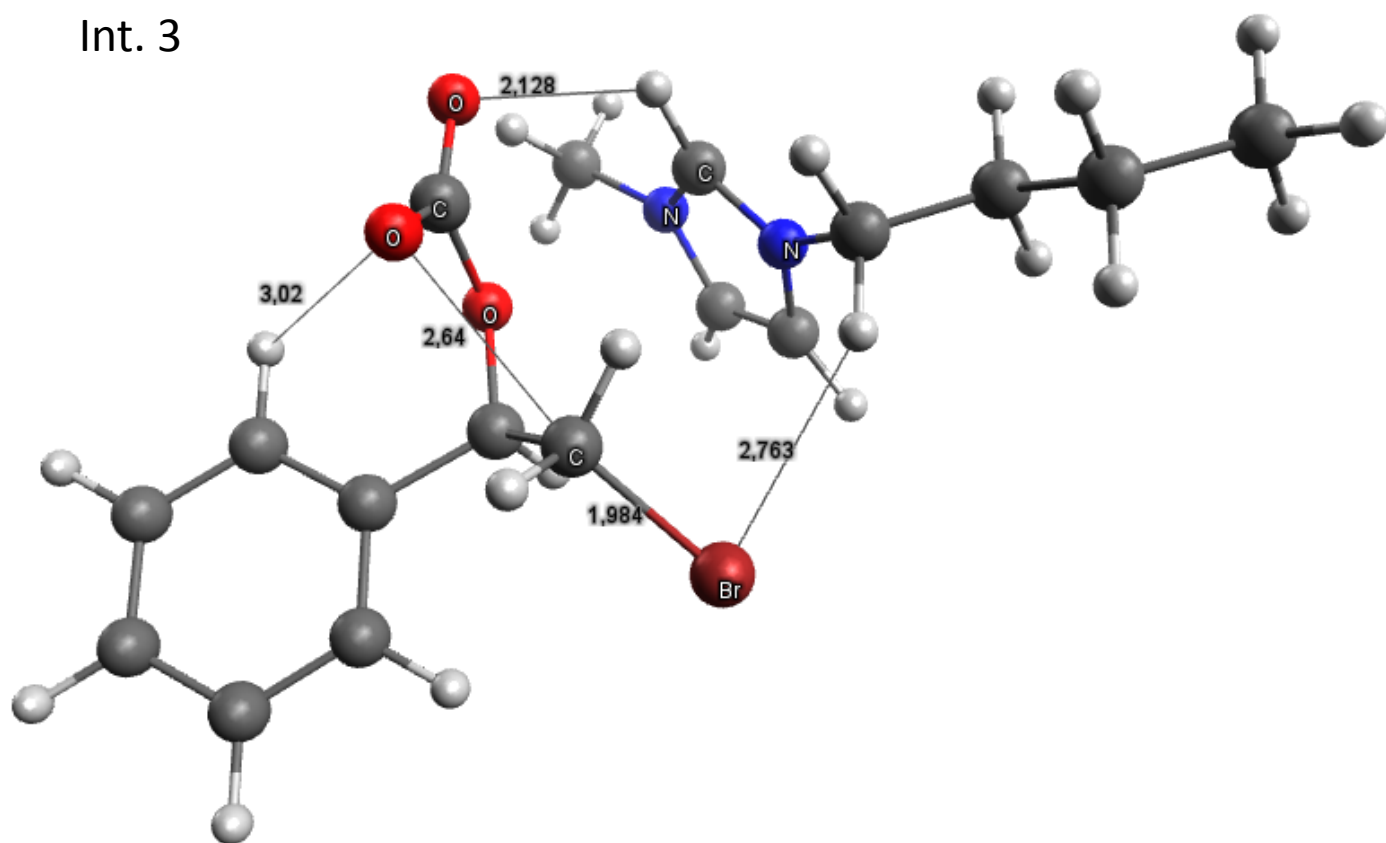
Int 2



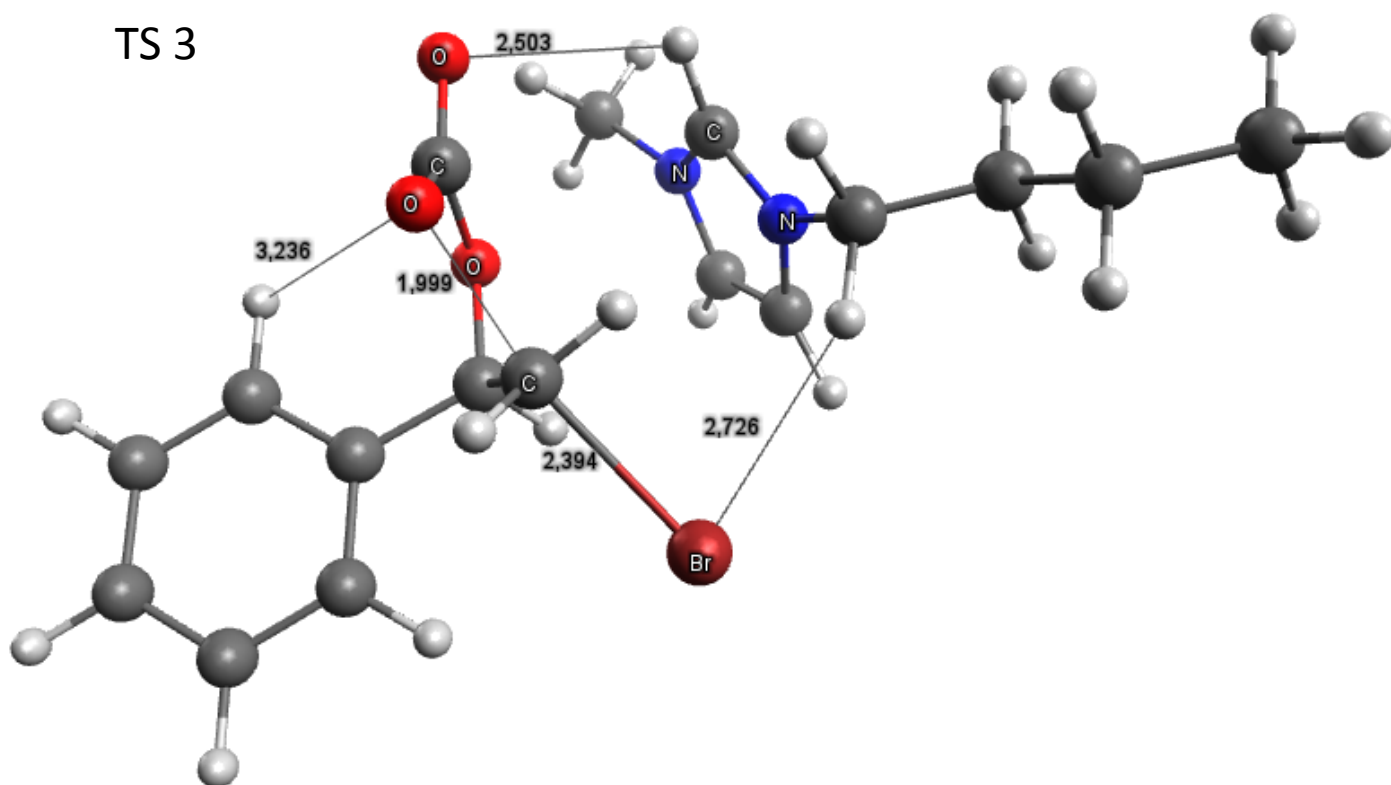
TS 2



Int. 3



TS 3



Complex 2

