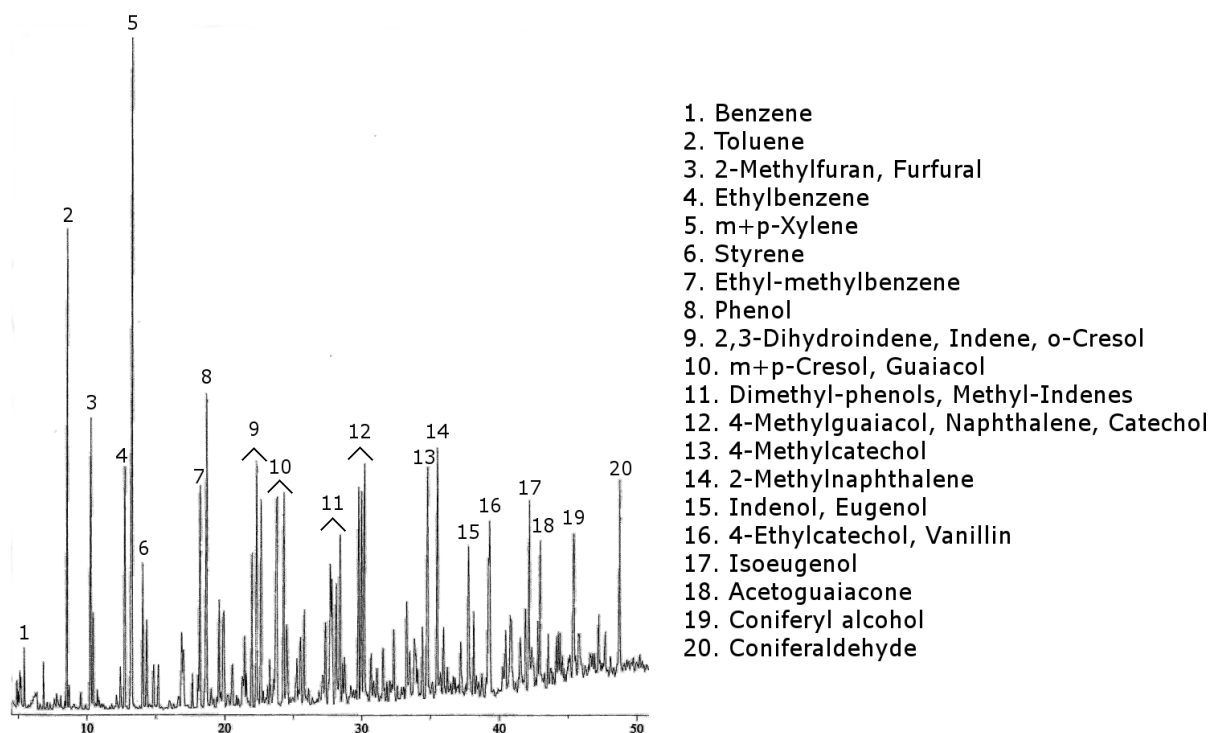
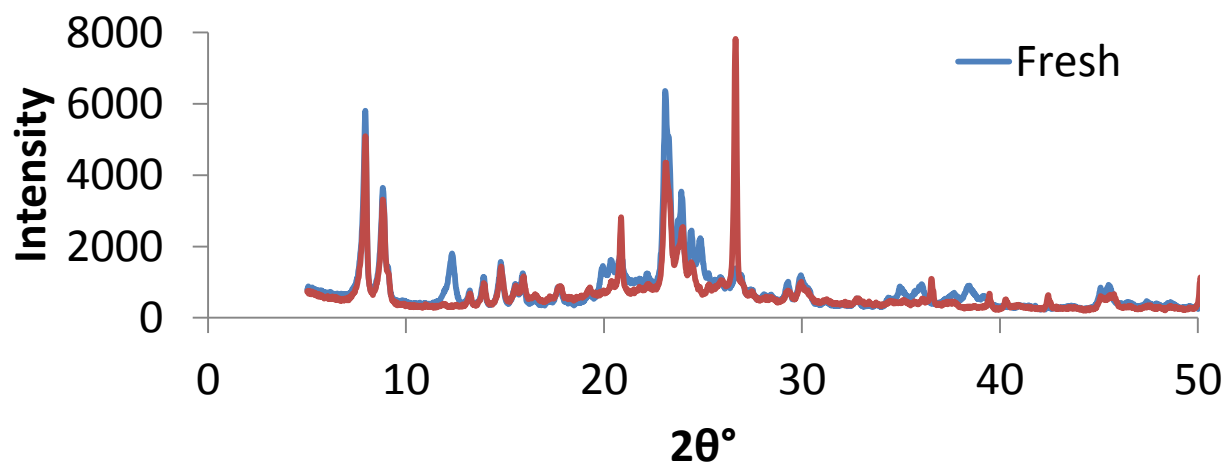


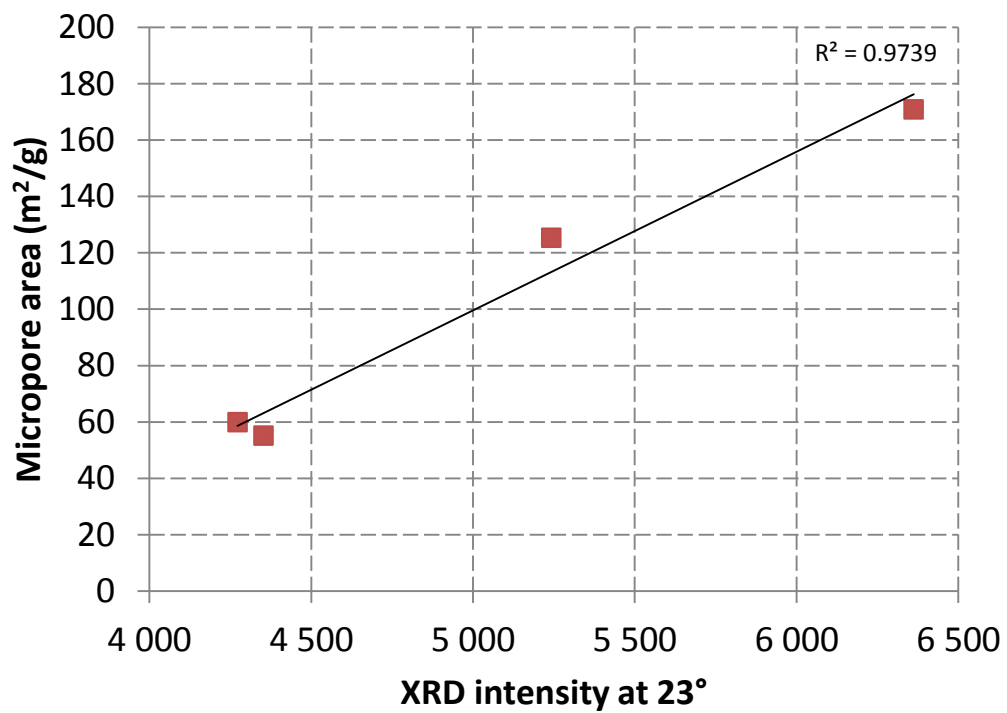
SM-1. CFP gas composition as a function of time-of-stream.



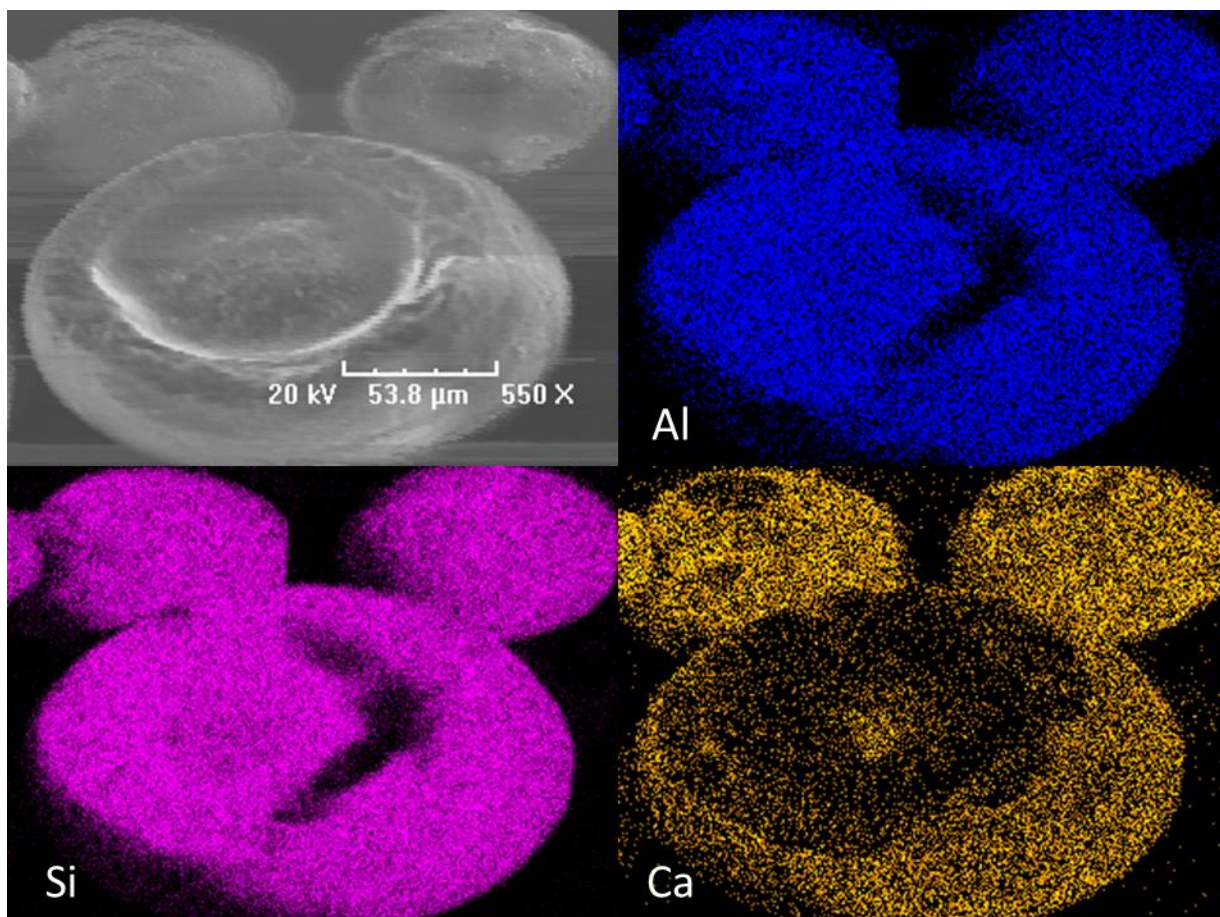
SM-2. Total ion chromatogram from the GC-MSD analysis of CFP oil.



SM-3. XRD patterns of the fresh (blue) and spent (red) catalyst samples.



SM-4. Catalyst micropore area as a function of XRD peak intensity at at 2θ 23° .



SM-5. EDS mapping of Si, Al and Ca for a catalyst particle after the experiment.