

Electronic Supporting Information (ESI)

Supporting Information

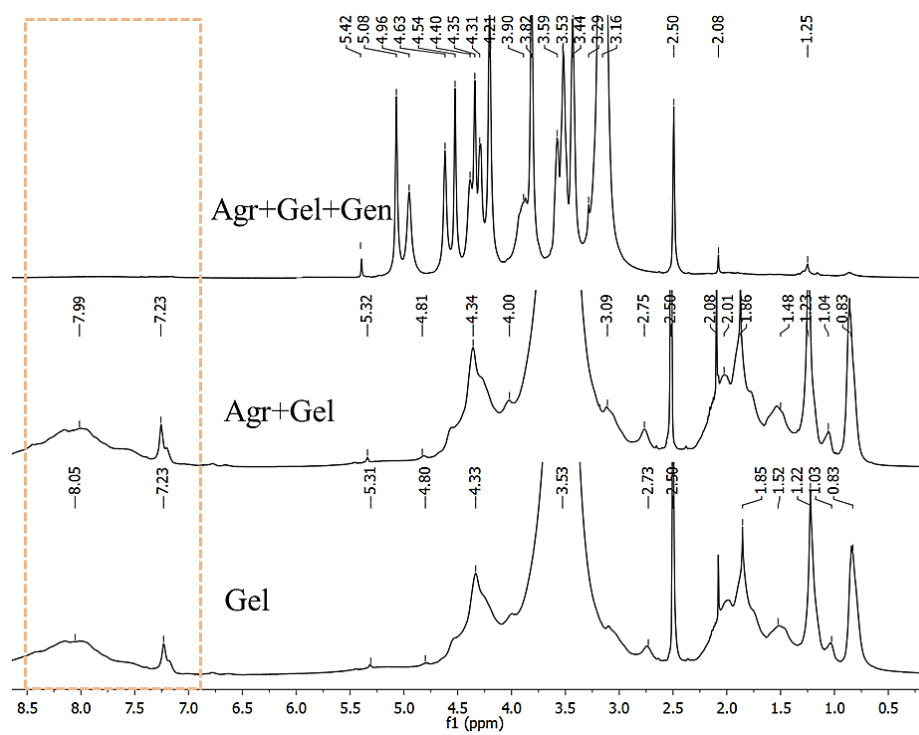
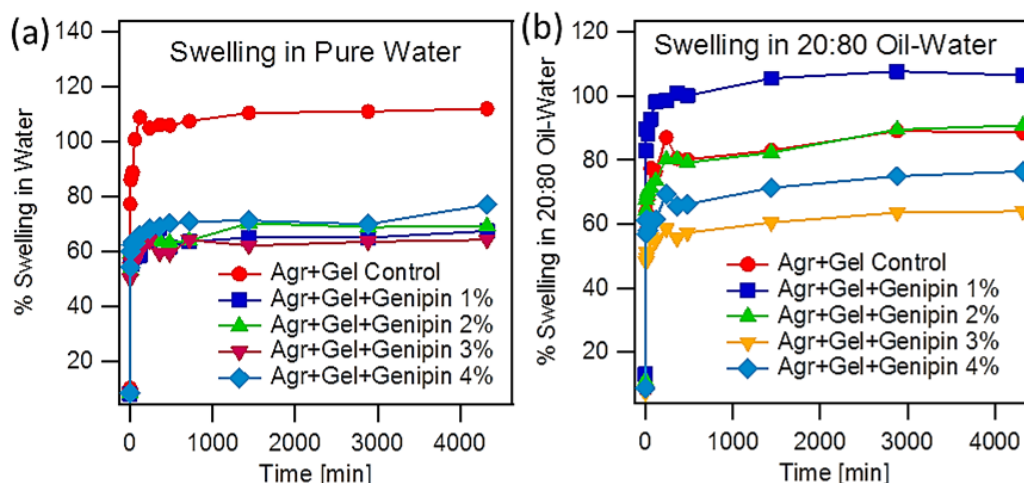
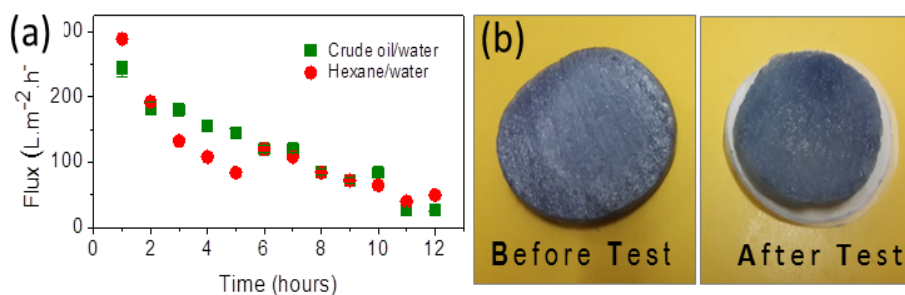


Figure S1.  $^1\text{H}$  NMR analysis of pristine, blend and cross linked foam membranes.



**Figure S2.** Swelling behavior of FM agarose + gelatin (2% w/v) for control and crosslinked blend membranes with different crosslinking concentration in (a) pure water and (b) 20:80 oil-water mixtures.



**Figure S3.** (a) Permeate flux trend foam membrane tested for their long term performance using different feed mixtures. (b) Photograph of FM before use and surface regenerated FM used for oil/water separation. Oil fouled membrane was washed with soap water to reclaim its active surface.