

Fig. 1 ^1H NMR spectra recorded during the biodegradation of 1 mM $[\text{NH}_{1120\text{H}}][\text{Ac}]$ by *Rhodococcus rhodochrous* ATCC 29672.

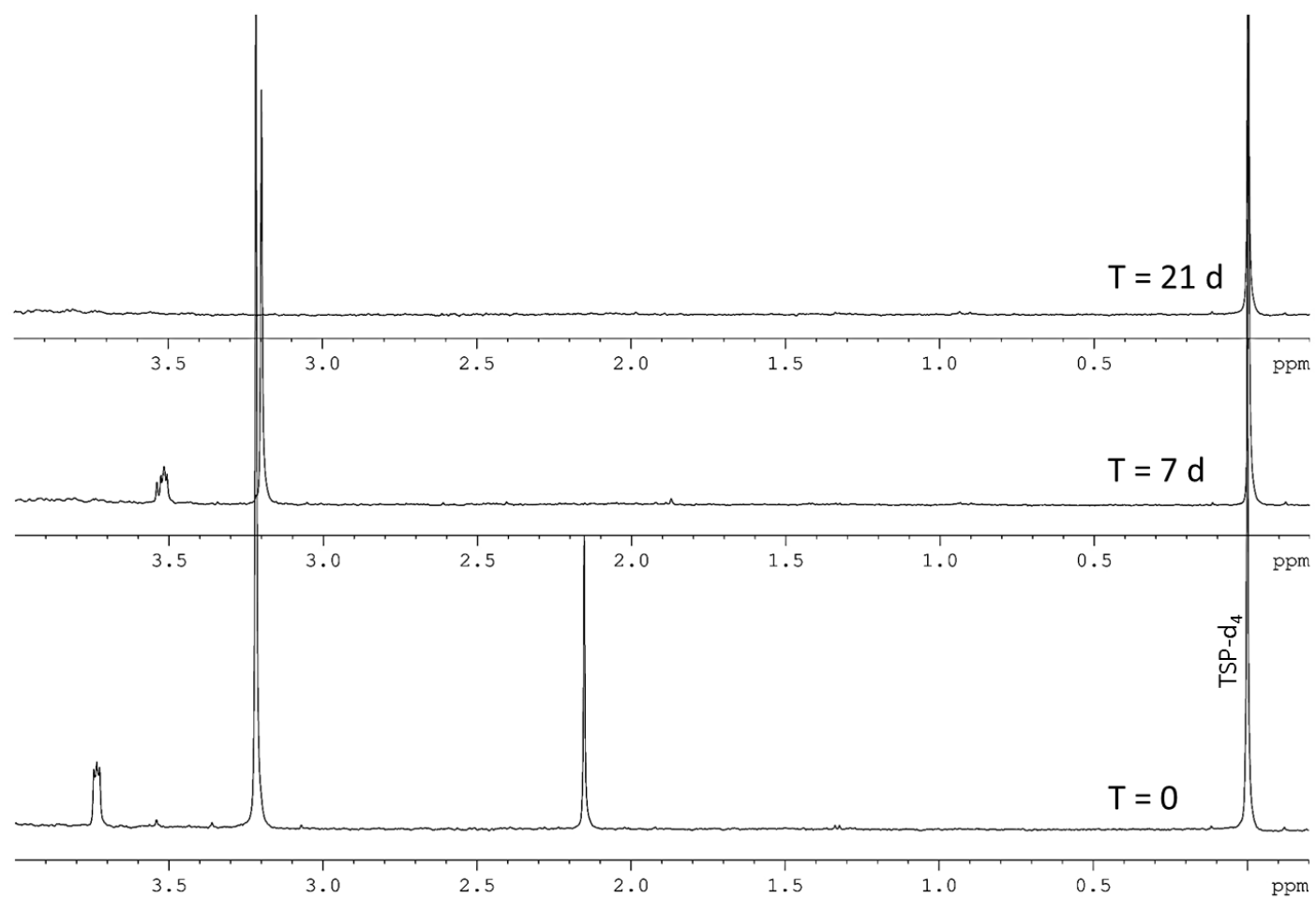


Fig. 2 ^1H NMR spectra recorded during the biodegradation of 1 mM $[\text{N}_{1112}\text{OCOCH}_3][\text{Tf}_2\text{N}]$ by *Rhodococcus rhodochrous* ATCC 29672.

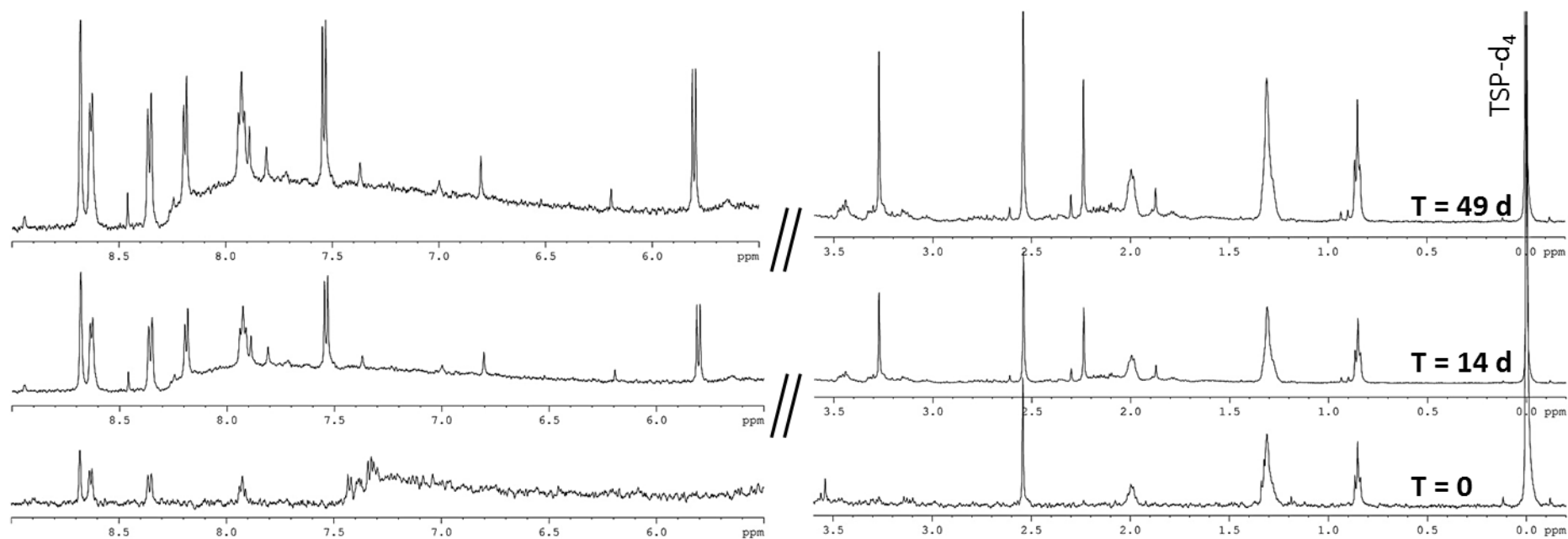


Fig. 3 ^1H NMR spectra recorded during the biodegradation of 1 mM $[\text{C}_6\text{mPy}][\text{Tf}_2\text{N}]$ by *Rhodococcus rhodochrous* ATCC 29672.

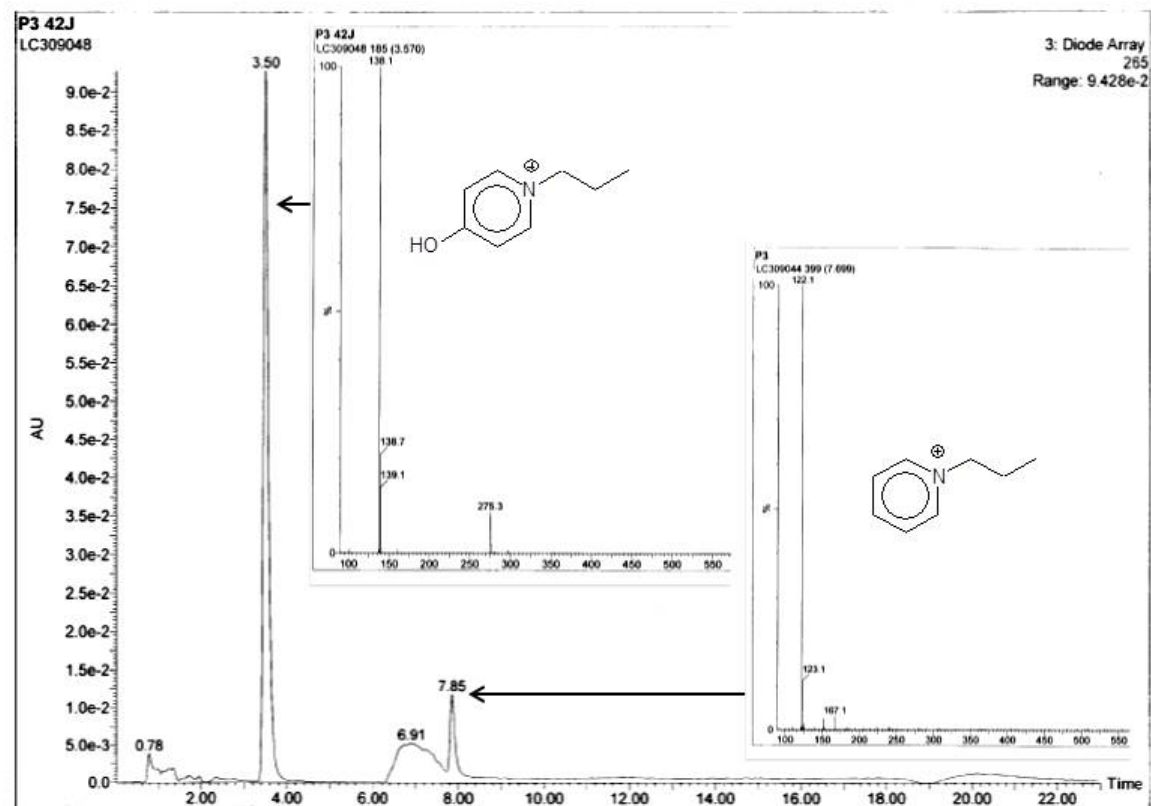


Fig. 4 LC-(+)-ESI-MS spectra of $[C_3Py][Tf_2N]$ and its metabolite

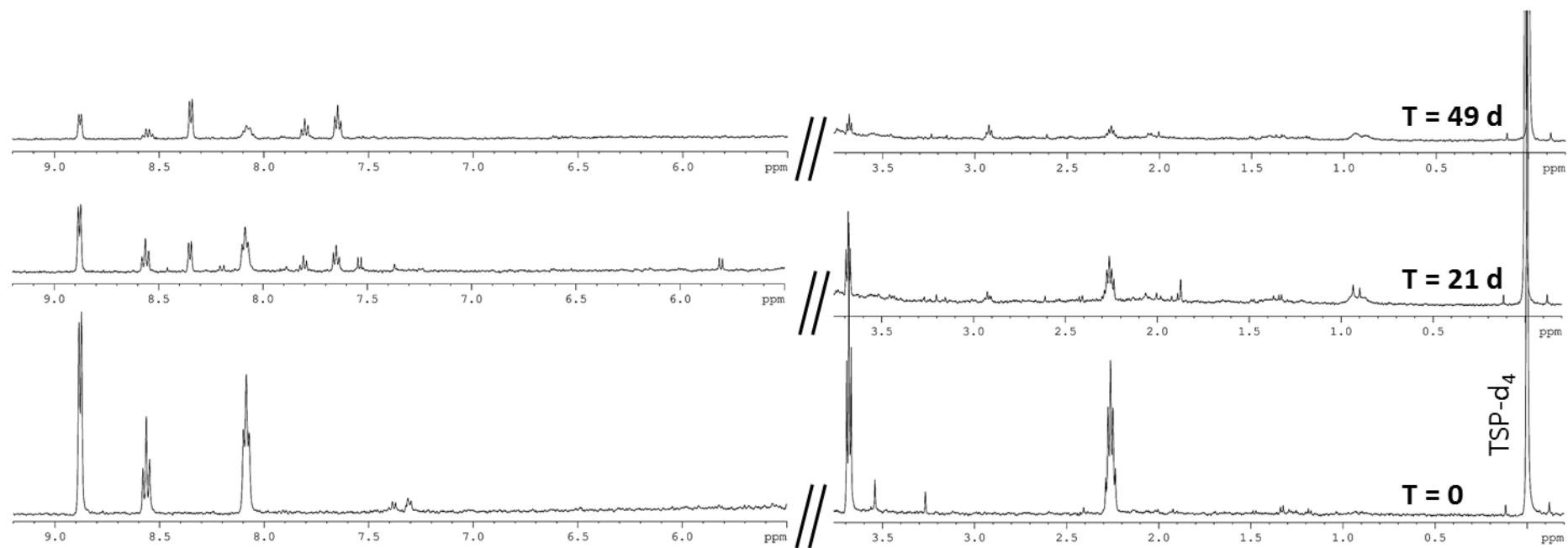


Fig. 5 ^1H NMR spectra recorded during the biodegradation of 1 mM $[\text{C}_{30}\text{H}_5\text{Py}][\text{Tf}_2\text{N}]$ by *Rhodococcus rhodochrous* ATCC 29672.

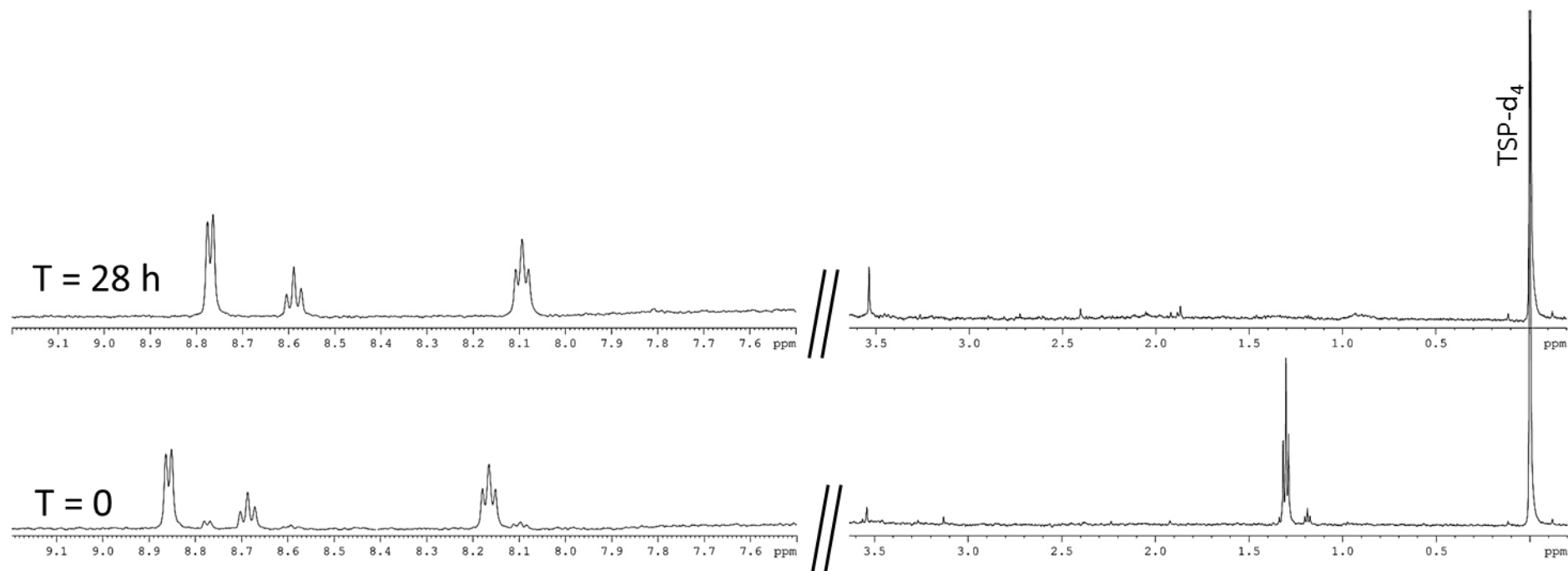


Fig. 6 ^1H NMR spectra recorded during the biodegradation of $1\text{ mM } [\text{C}_{10}\text{COOCH}_2\text{Py}][\text{Tf}_2\text{N}]$ by *Rhodococcus rhodochrous* ATCC 29672.