

**Figure S1.**

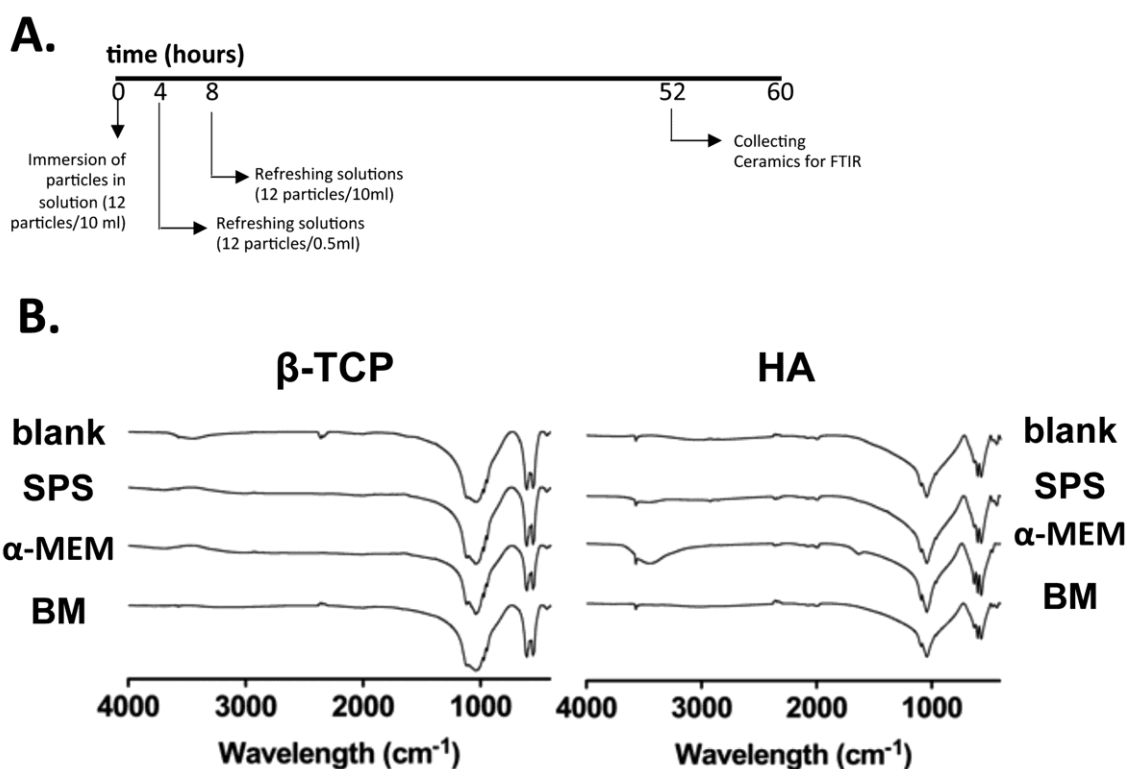


Figure S1. Changes in chemical composition after immersion in SPS,  $\alpha$ -MEM or BM are detected by FTIR. Blank refers to ceramic particles before incubation. A. HA and  $\beta$ -TCP particles were incubated for 52 hours in SPS,  $\alpha$ -MEM or BM. At 4 and 8 hours, solutions were refreshed. After 52 hours, particles were collected for FTIR analysis. B. There were no evident differences detected between the different spectra.