

Electronic supplementary information

Direct chemical vapour generation-flame atomization as interface of high performance liquid chromatography-atomic fluorescence spectrometry for speciation of mercury without using post-column digestion

Yong-guang Yin^a, Zhen-hua Wang^a, Jin-feng Peng^b, Jing-fu Liu^{a*}, Bin He^a, Gui-bin Jiang^a

^a State Key Laboratory of Environmental Chemistry and Ecotoxicology, Research Center for Eco-Environmental Sciences, Chinese Academy of Sciences, P.O. Box 2871, Beijing 100085, China

^b Food Safety Testing Subsection, Inspection and Quarantine Technology Center, Ningbo Entry-Exit Inspection and Quarantine Bureau, Ningbo 315012, China

Figures

Fig. S1 Effect of HCl concentration on intensities of mercury compounds. Concentration of mercury species: 50 $\mu\text{g L}^{-1}$. Flow rate of KBH_4 : 1 mL min^{-1} . Flow rate of carrier gas: 600 mL min^{-1} . Other conditions were given in Table 1.

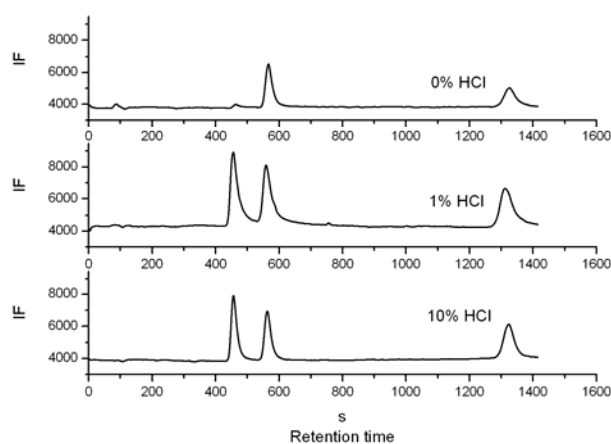


Fig. S2 Effect of concentration of KBH_4 on the intensities of mercury compounds. Concentration of mercury species: $50 \mu\text{g L}^{-1}$. Flow rate of KBH_4 : 1 mL min^{-1} . Flow rate of carrier gas: 600 mL min^{-1} . Other conditions were given in Table 1.

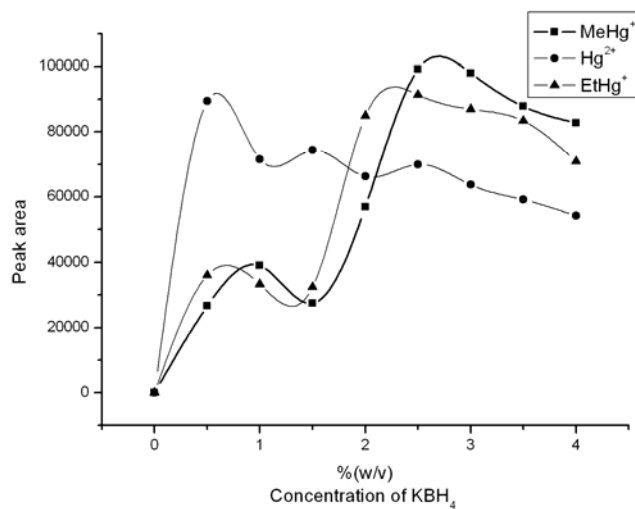


Fig. S3 Effect of flow rate of KBH_4 on the intensities of mercury compounds. Concentration of mercury species: $50 \mu\text{g L}^{-1}$. Flow rate of carrier gas: 600 mL min^{-1} . Other conditions were given in Table 1.

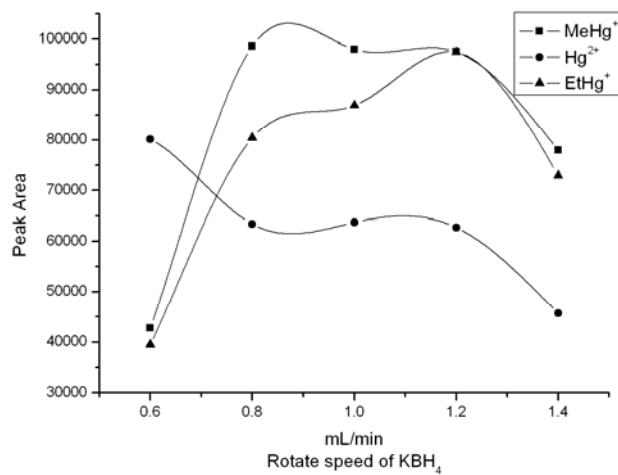


Fig. S4 Effect of flow rate of carrier gas on the intensities of mercury compounds. Concentration of mercury species: $50 \mu\text{g L}^{-1}$. Other conditions were given in Table 1.

