

Fig. S1 Effect of CH_4 , NH_3 and O_2 reaction gases and their flowrates on the ^{75}As , ^{52}Cr and ^{78}Se signals at $\text{RPq}=0.4$.

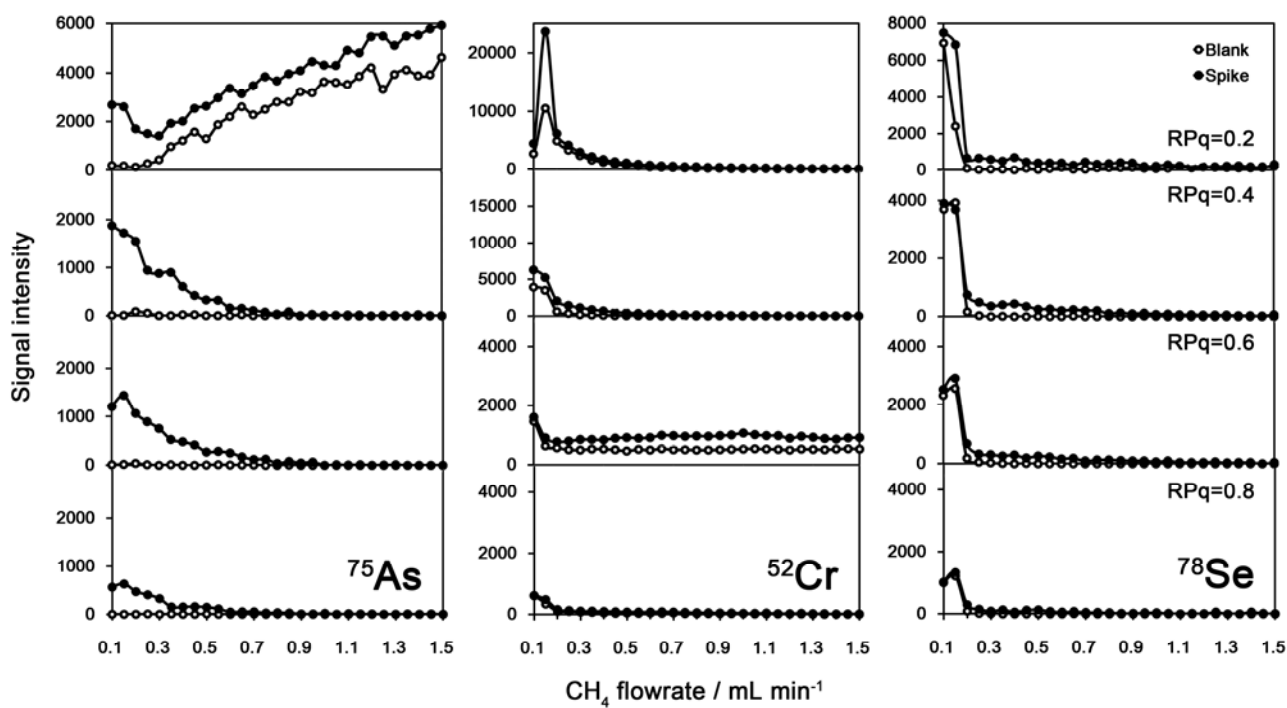


Fig. S2 Effect of RPq values on the ^{75}As , ^{52}Cr , ^{78}Se signals with CH_4 as reaction gas.