

Electronic Supplementary Information

Magnetic Immobilization of Amine-Functionalized Magnetite Microspheres in a Knotted Reactor for On-Line Solid-Phase Extraction Coupled with ICP-MS for Speciation of Trace Chromium

Yan-Feng Huang,[†] Yan Li, Yan Jiang and Xiu-Ping Yan*

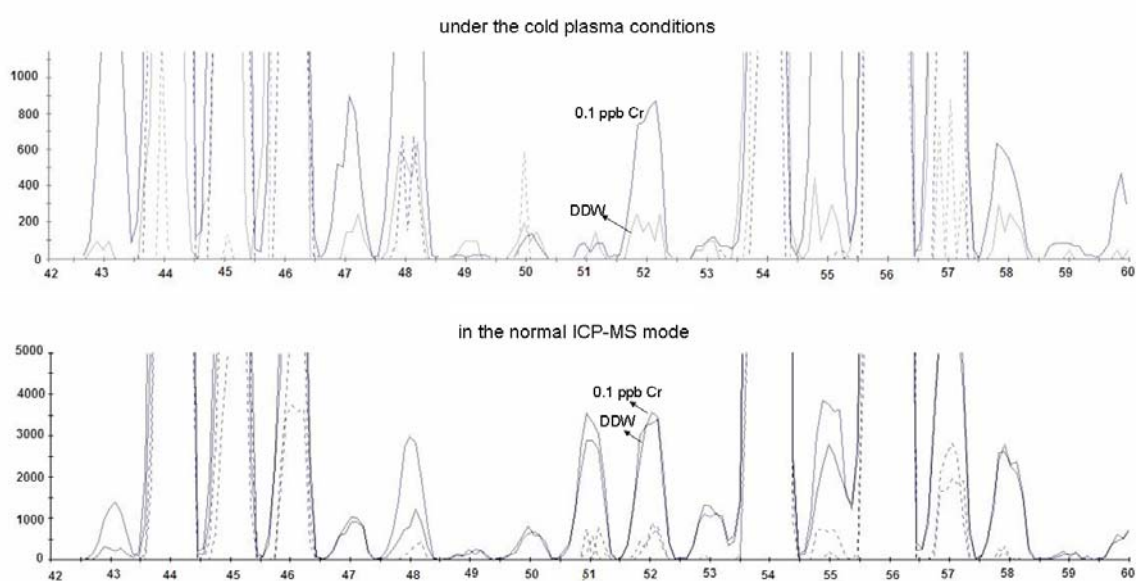


Figure S1. Mass spectra of the background and the standard of Cr (0.1 ppb Cr^{III}) under the cold plasma conditions and normal plasma conditions using conventional direct sample introduction system.

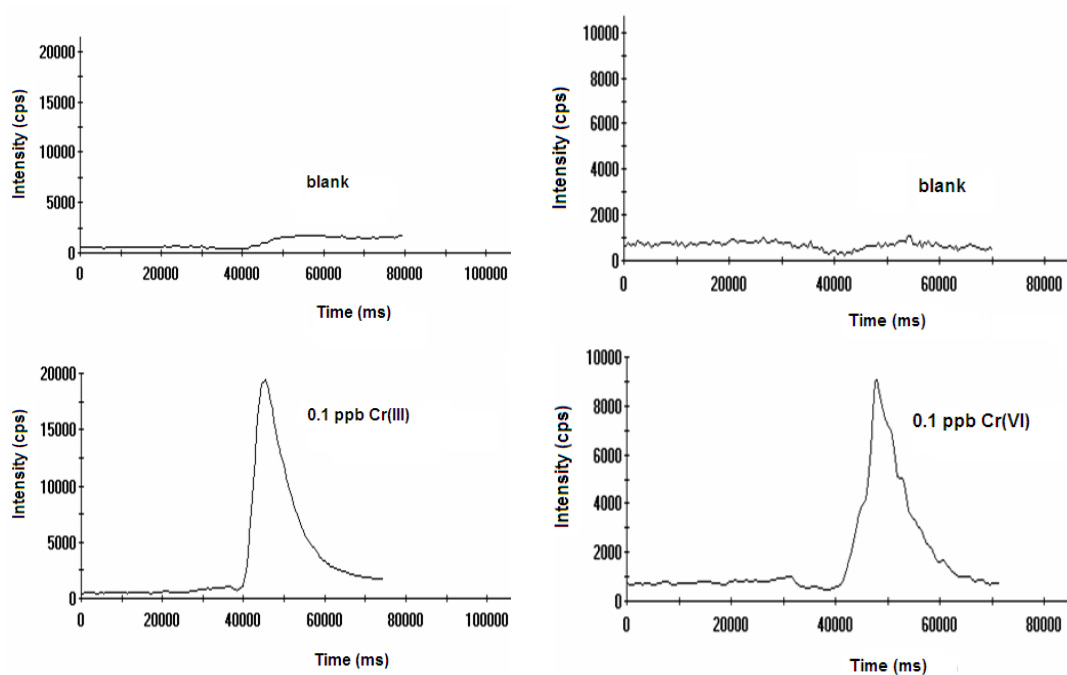


Figure S2. ICP-MS signals of the blank and the standard of Cr (0.1 ppb Cr) under the cold plasma conditions when running in the FI mode.