

Supplementary information (ESI) for Journal of Analytical Atomic Spectrometry

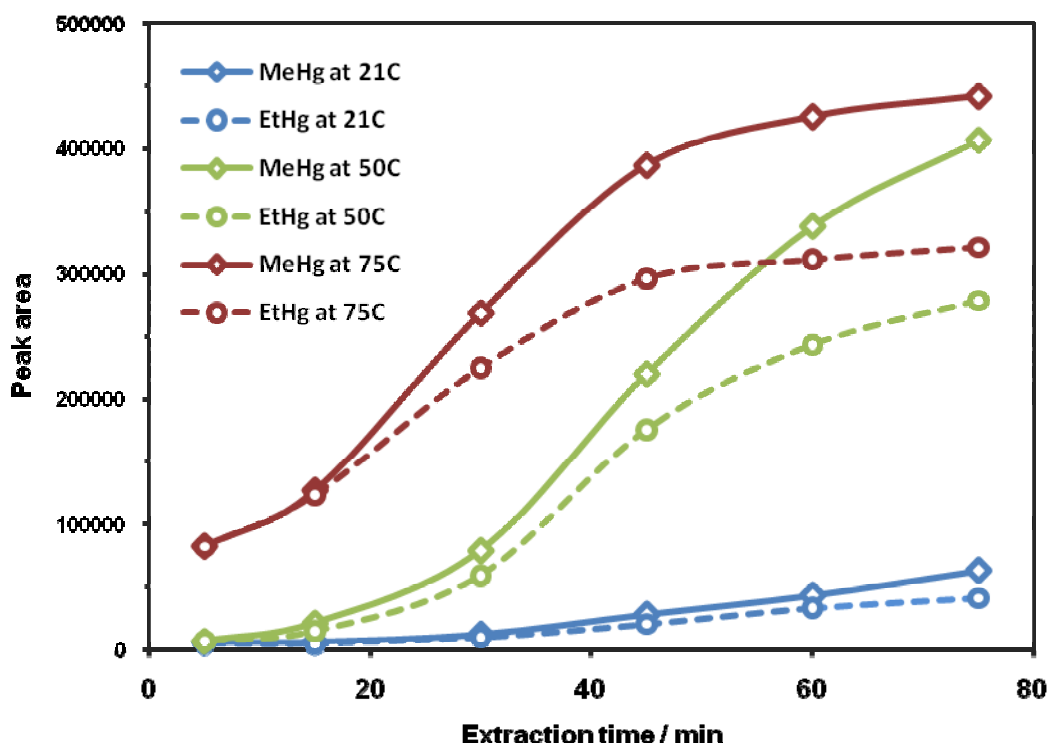


Fig. S1 Temporal profile of SPME extraction of MeHg and EtHg at different temperatures. Fibre was exposed to the headspace of a $25 \mu\text{g L}^{-1}$ standard solution.

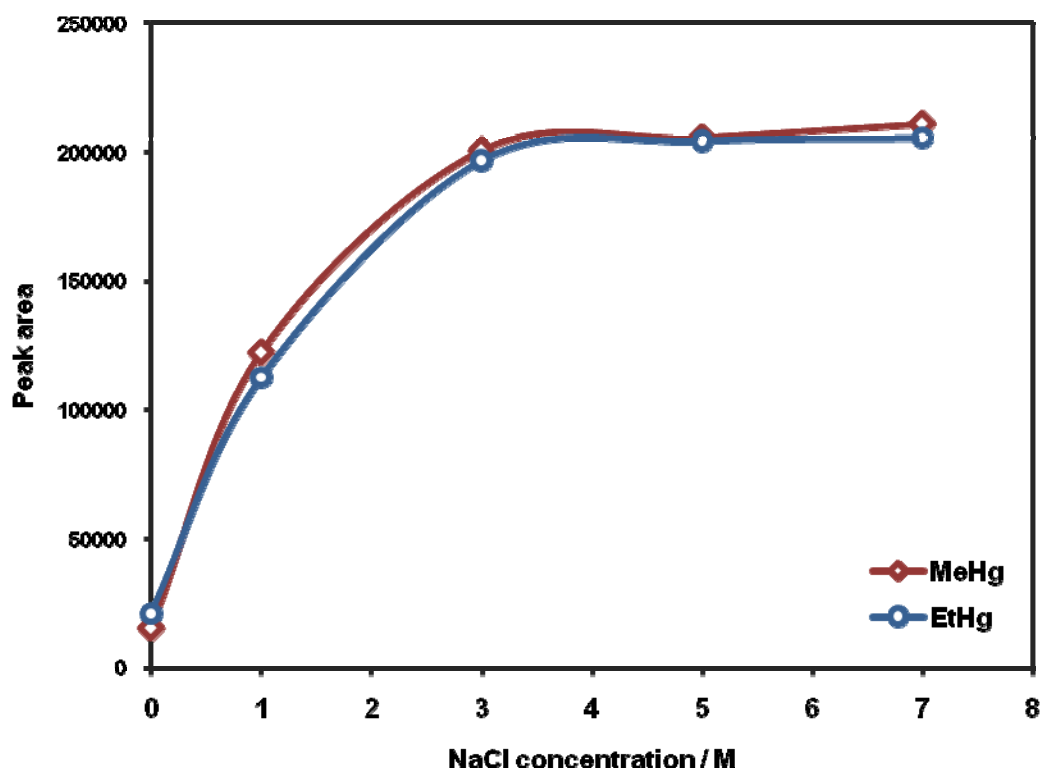


Fig. S2 Effect of NaCl salt concentration on extraction efficiency. Extraction was carried out at 75 °C for 45 min in the headspace of a 25 $\mu\text{g L}^{-1}$ standard containing different salt concentrations.

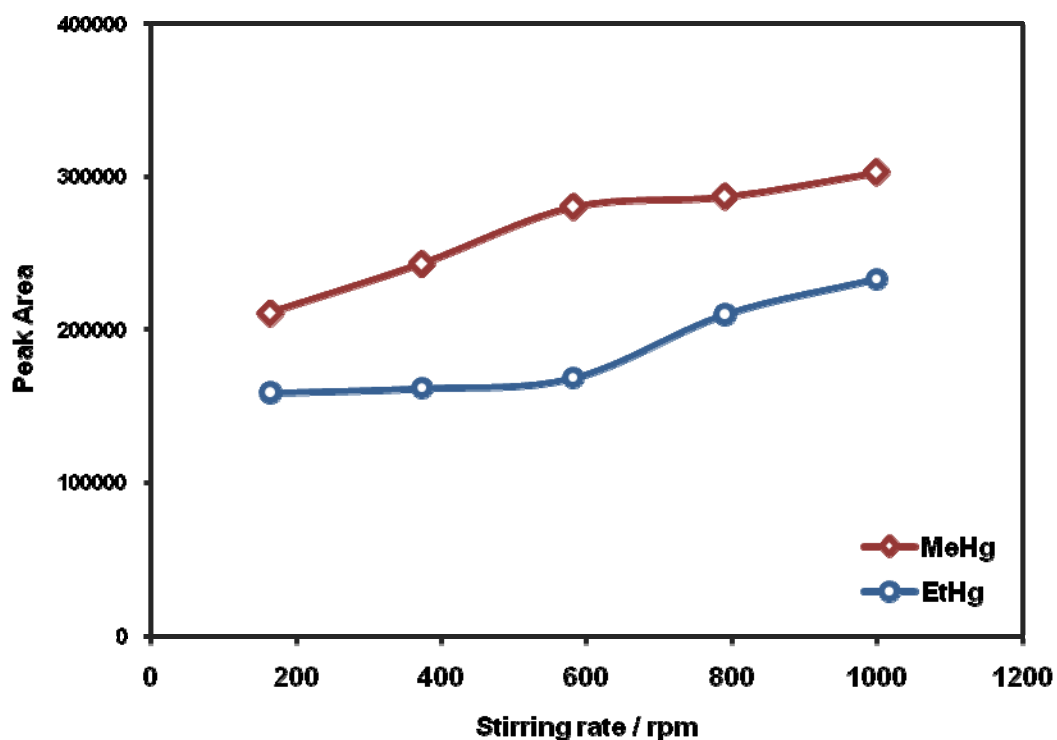


Fig. S3 Effect of sample agitation rate on extraction efficiency. Extraction was carried out at 75 °C for 45 min in the headspace of 25 $\mu\text{g L}^{-1}$ standard solution containing 5M NaCl.

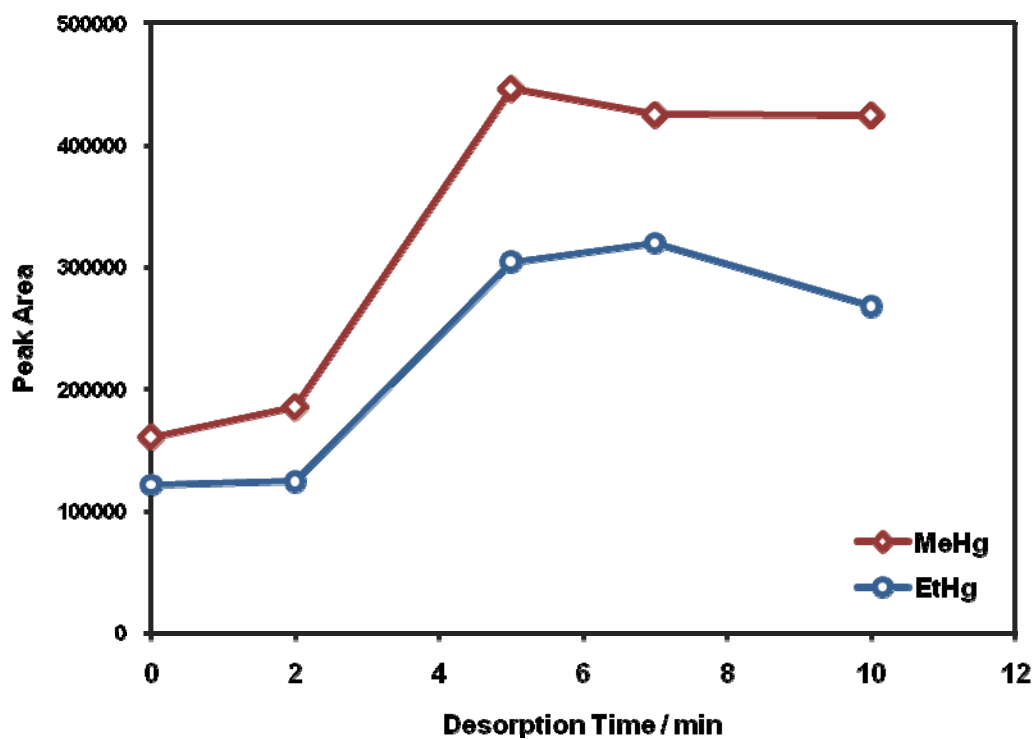


Fig. S4 Effect of fibre desorption time on peak sensitivity. The fibre was immersed in the desorption chamber full of the mobile phase of choice after extraction of a $25 \mu\text{g L}^{-1}$ standard solution under optimized conditions.