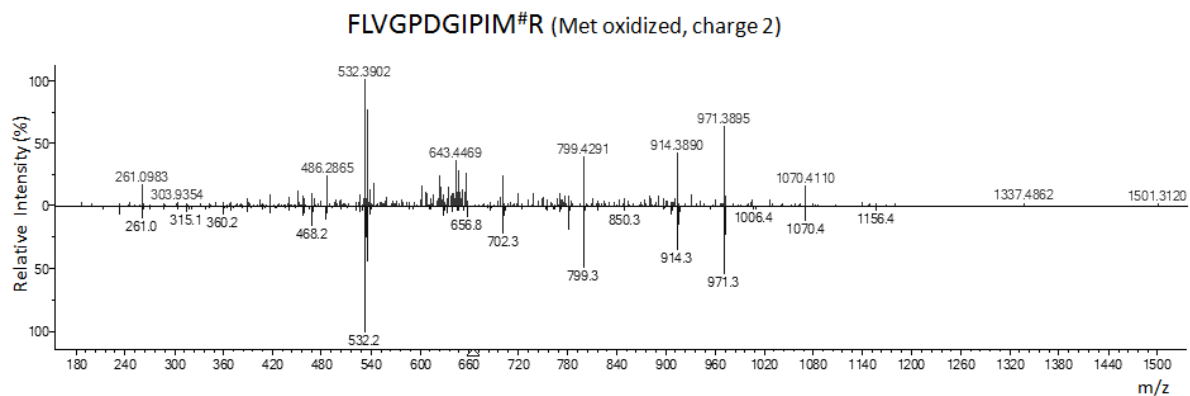
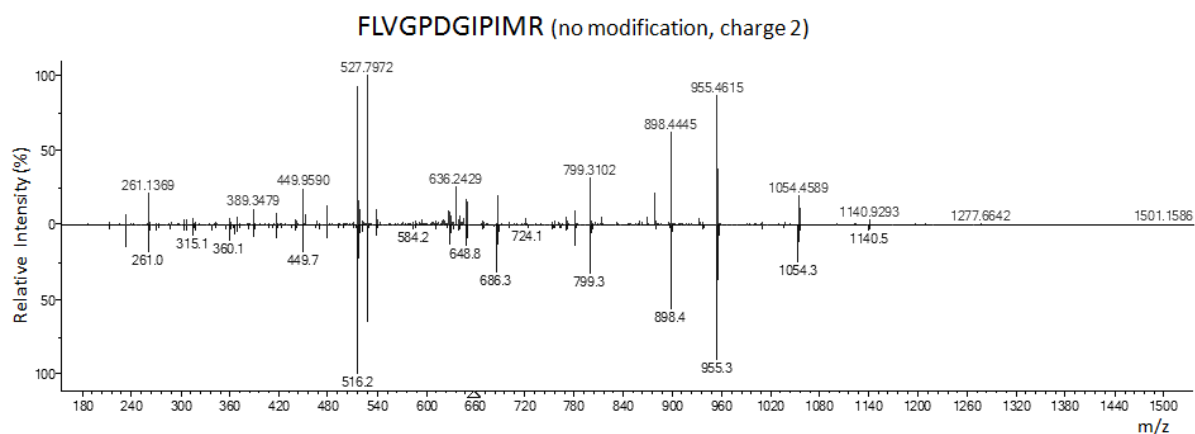
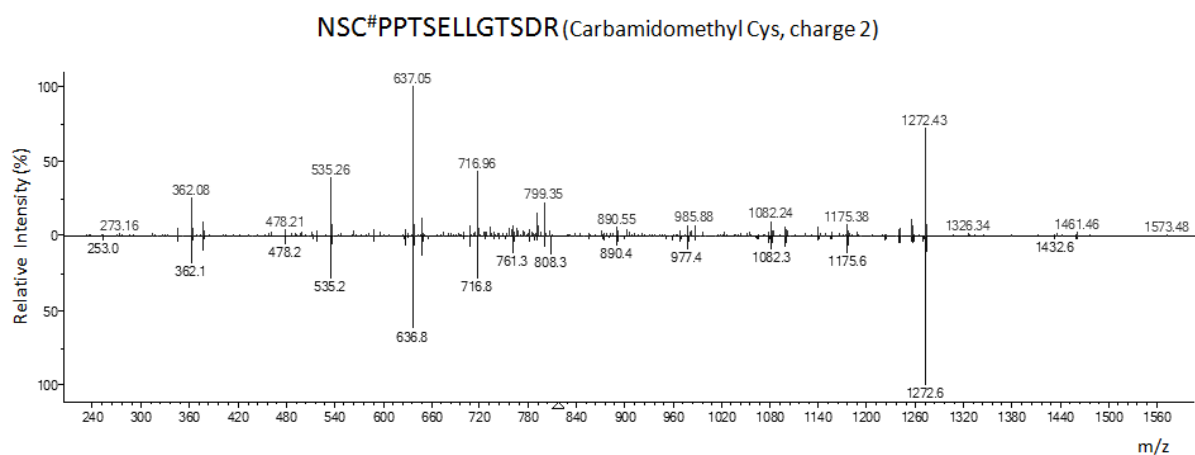
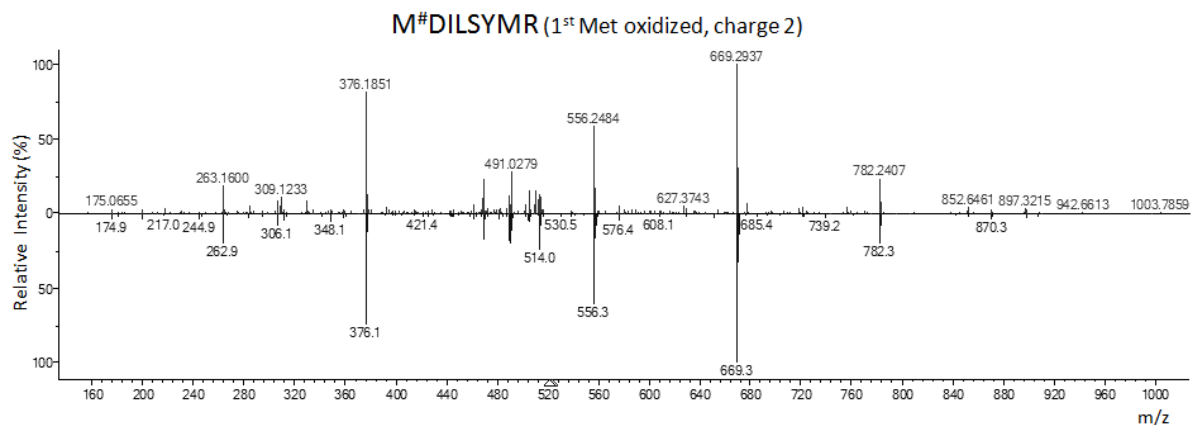
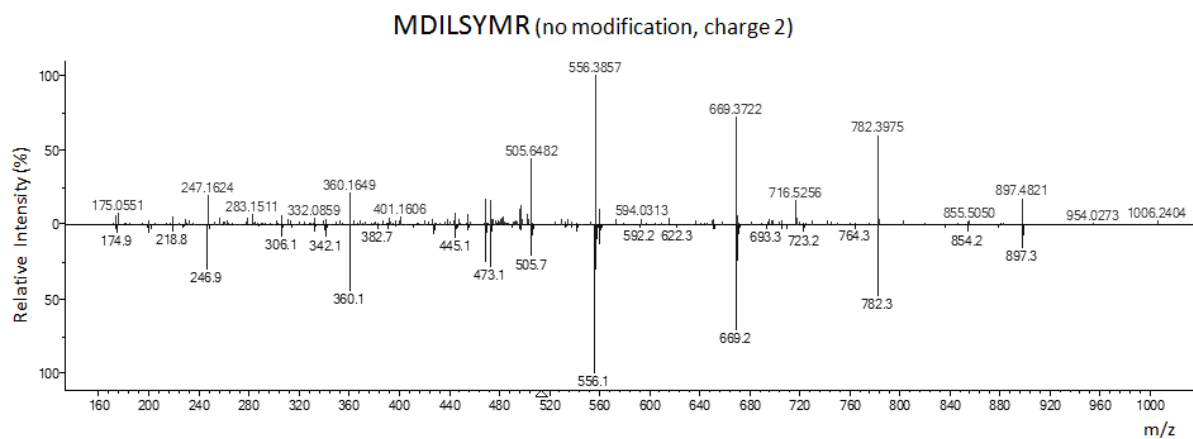


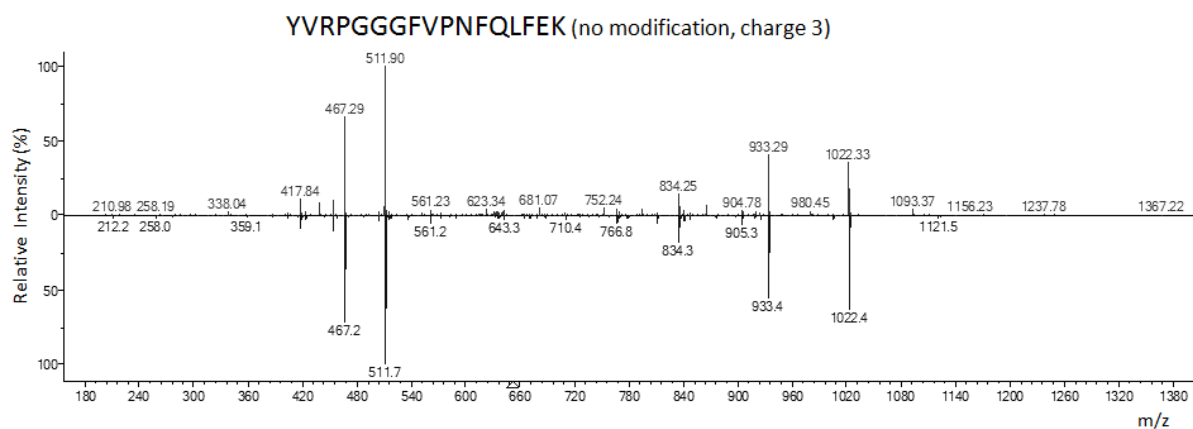
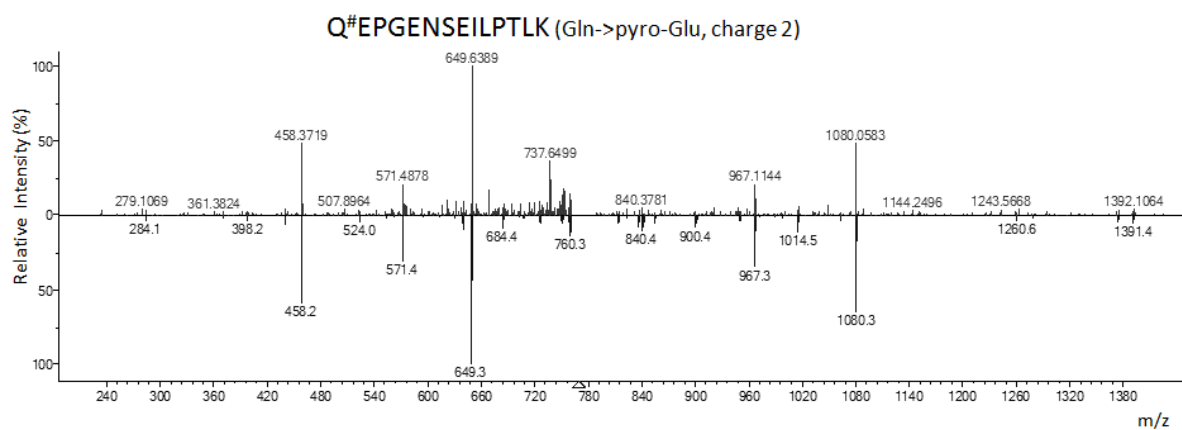
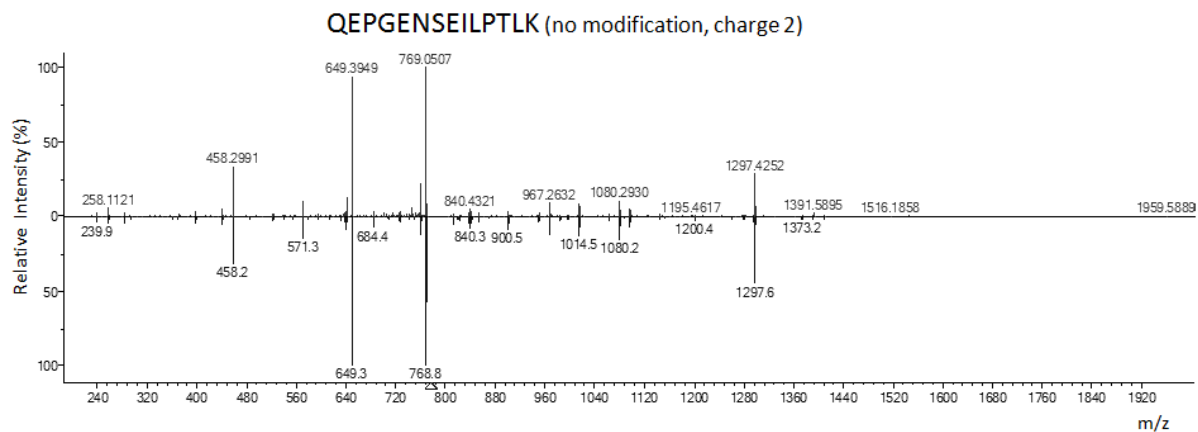
## **Supplementary Information**

- a. Experimental MS/MS spectra assigned for human glutathione peroxidase 3 selenoprotein peptides in this study (top portion) and comparison with consensus spectra from the NIST Peptide Mass Spectral Library (bottom portion).
  
- b. Experimental MS/MS spectra assigned for human selenoprotein P peptides in this study (top portion) and comparison with consensus spectra from the NIST Peptide Mass Spectral Library (bottom portion).

a. Glutathione peroxidase 3 peptides







b. Selenoprotein P peptides

