

Supporting information for

Simultaneously and ultra-sensitive quantification of multiple peptides by using

europium chelate labeling and capillary electrophoresis–inductively coupled

plasma mass spectrometry

MingWei Yang, YunQiang Zhao, Ling Fang, JinPing Zheng and FengFu Fu*

Key Laboratory of Analysis and Detection for Food Safety of Ministry of Education,
Fujian Provincial Key Lab of Analysis and Detection for Food Safety, Department of
Chemistry, Fuzhou University, Fuzhou, Fujian 350108, China

* Corresponding author: Tel: +86-591-22866135; Fax: +86-591-22866135; E-mail: fengfu@fzu.edu.cn (F.-F. Fu)

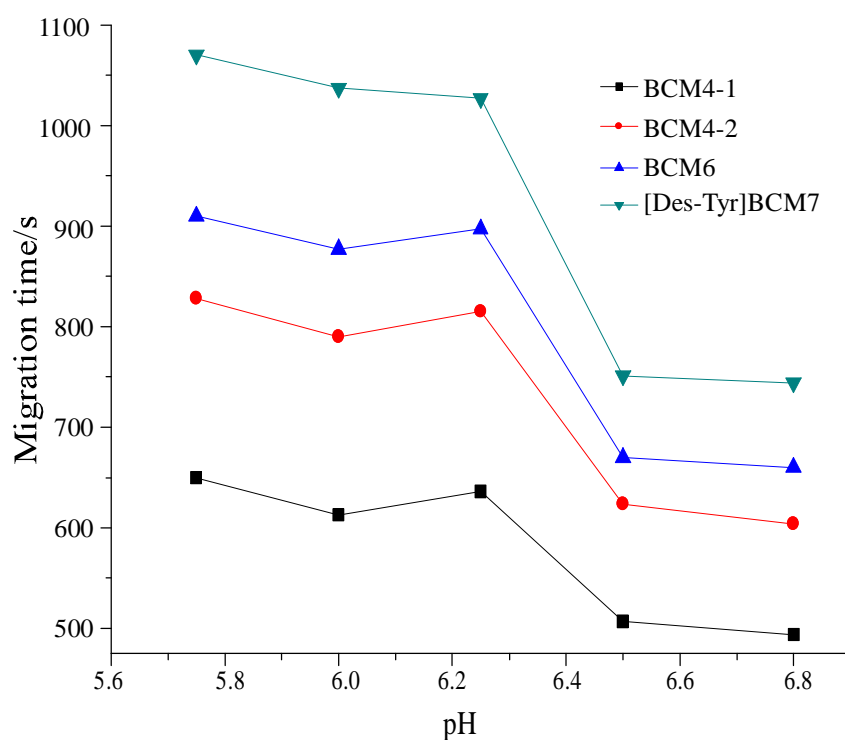


Figure S1: The effect of pH on the migration time of BCM4, BCM6 and [Des-Tyr]BCM7. The data was obtained by determining the mixed solution of 9.17×10^{-7} mol/L BCM4, 6.93×10^{-7} mol/L BCM6 and 8.98×10^{-7} mol/L [Des-Tyr]BCM7 under conditions of Table 2 except pH.

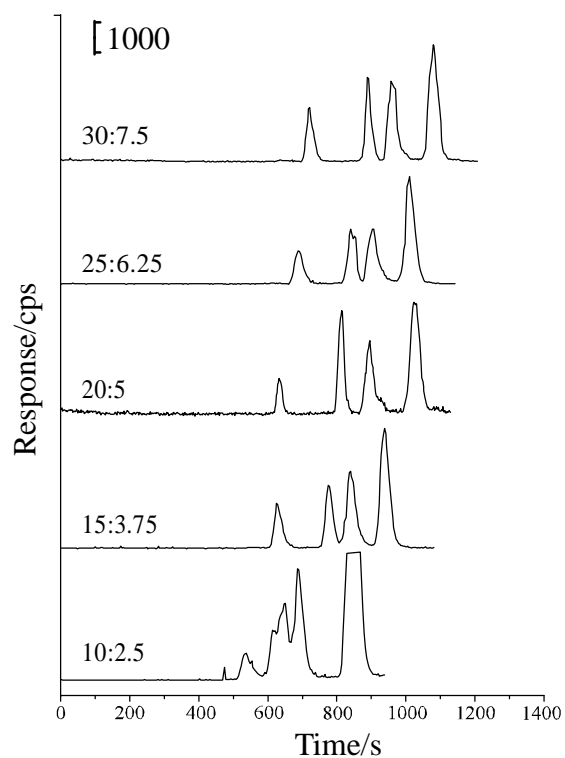


Figure S2: The electrochromatograms of BCM4, BCM6 and [Des-Tyr]BCM7 at different buffer concentration ($\text{NaH}_2\text{PO}_4 : \text{Na}_2\text{B}_4\text{O}_7 = 10:2.5, 15:3.75, 20:5, 25:6.25$ and $30:7.5$ mmol/L). The data was obtained by determining the mixed solution of 9.17×10^{-7} mol/L BCM4, 6.93×10^{-7} mol/L BCM6 and 8.98×10^{-7} mol/L [Des-Tyr]BCM7 under conditions of Table 2 except the concentration of buffer solution.

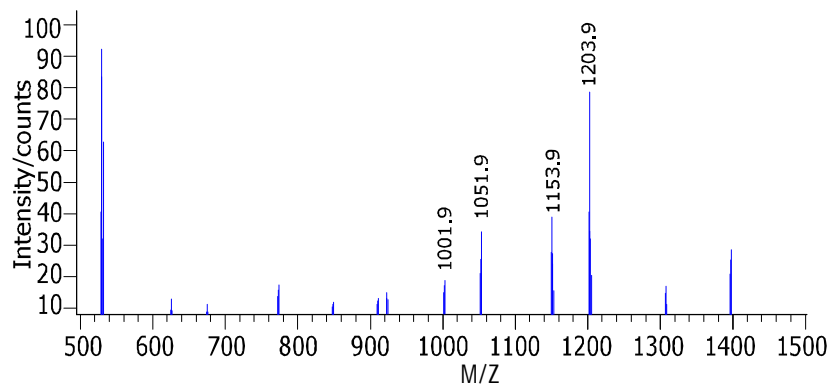


Figure S3: ESI MS spectra monitoring the labeling of hydrolysate of real cheese sample. The signal at m/z 1001.9 corresponding to the expected DTPA-[Des-Tyr]BCM7 adduct, the signal at m/z 1051.9 corresponding to the expected DTPA-BCM6 adduct, the signal at m/z 1153.9 corresponding to the expected Eu^{3+} -DTPA-[Des-Tyr]BCM7 adduct, and the signal at m/z 1203.9 corresponding to the expected Eu^{3+} -DTPA- BCM6 adduct.