

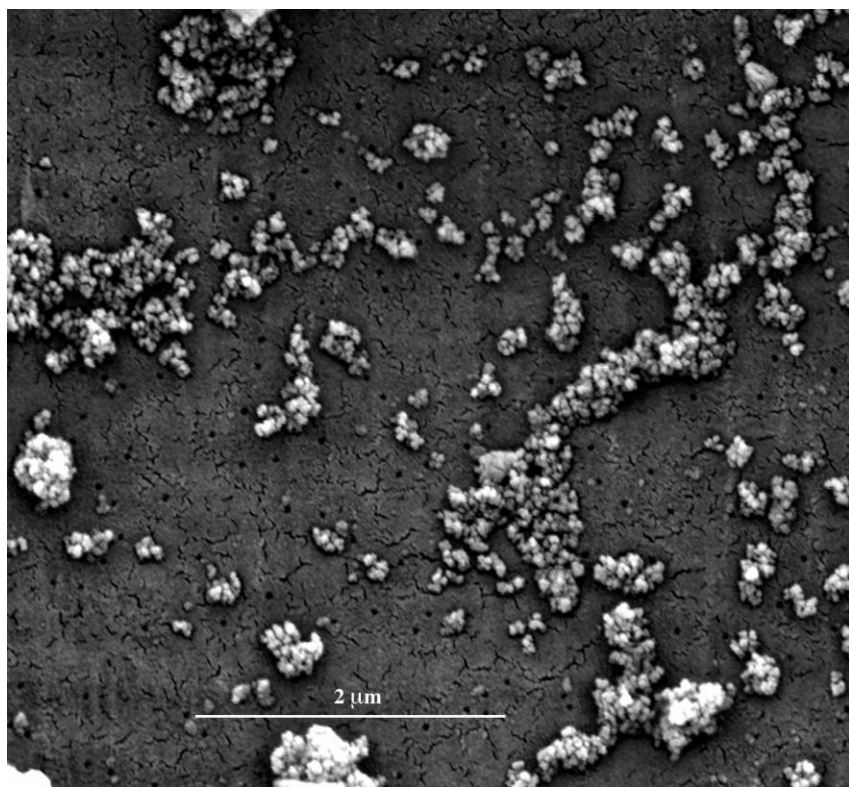
Electronic Supplementary Information

Investigating agglomeration and dissolution of silica nanoparticles in aqueous suspensions by dynamic reaction cell inductively coupled plasma-mass spectrometry in time resolved mode

Federica Aureli, Marilena D'Amato, Barbara De Berardis, Andrea Raggi, Anna Chiara Turco,
Francesco Cubadda

SEM images of agglomerates observed in NM-201 (a) and NM-203 (b):

(a)



(b)

