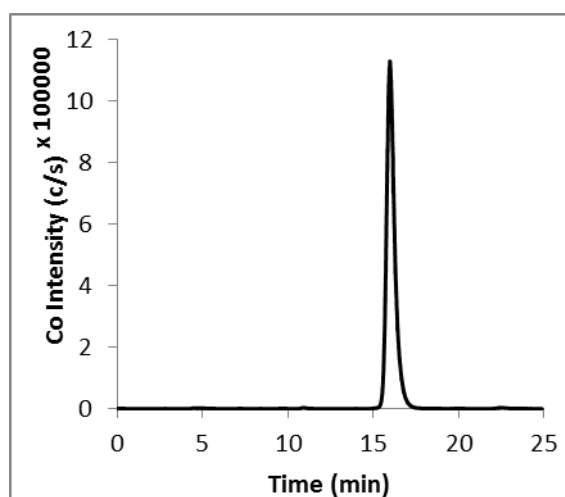
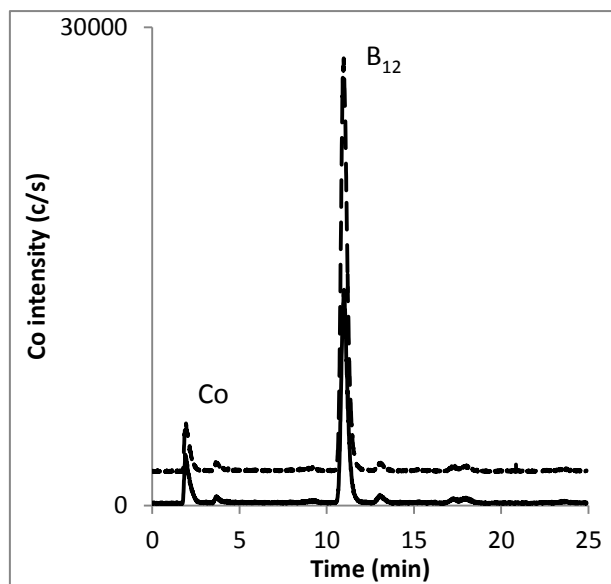


Supplemental Table 1. Instrumental parameters for the determination of Co in cyanocobalamin.

Parameter	Value
RF Power	1500 W
Plasma flow	15 L/min
Auxiliary flow	0.9 L/min
Carrier flow	1.05 L/min
Makeup gas flow	0.1 L/min
Nebulizer	PFA microflow 0.1 mL/min
Spray chamber	PFA Scott type double pass
Spray Chamber Temperature	2 °C
Integration time/point	0.1 s
Integration points/mass	3
Repetition	50



Supplemental Figure 1. A Chromatogram of a commercial cyanocobalamin (1000 ng/g)



Supplemental Figure 2. Co and vitamin B₁₂ determination from SRM 3280 (multivitamin tablets SRM). The solid line represents unspiked; dashed line represents spiked sample.