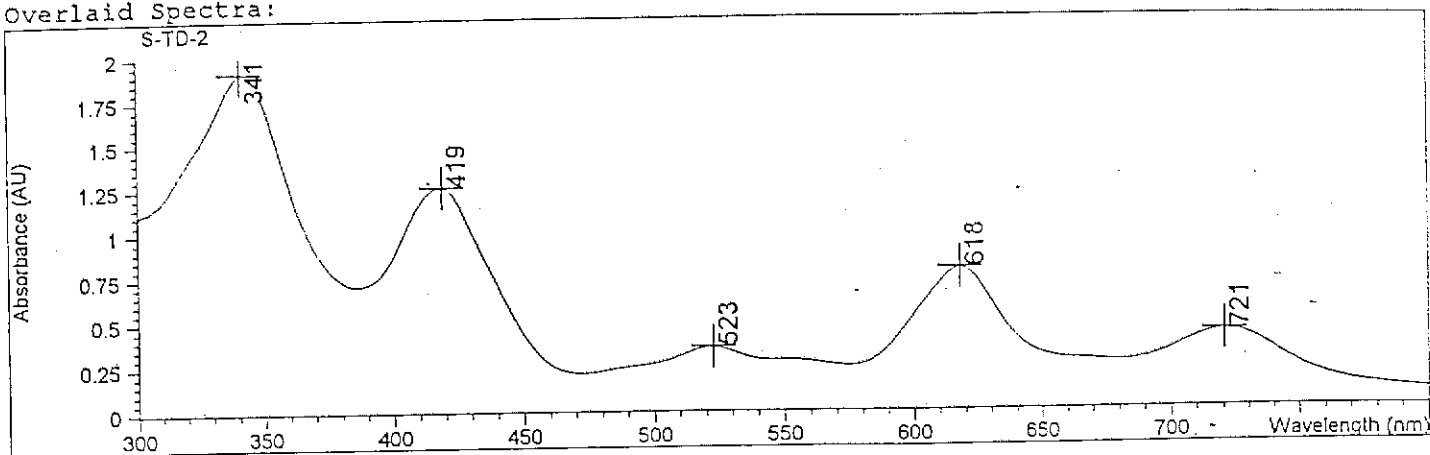


Pn = pentyl
TD3

Method file : <untitled>
Information : Default Method
Data File : C:\HPCHEM\1\DATA\JUNZHONG\S-TD-2.SD Created : 1/11/00
15:18:20

Overlaid Spectra:

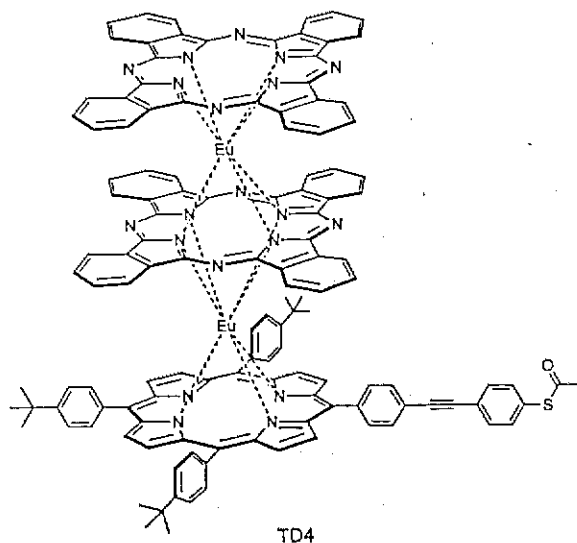


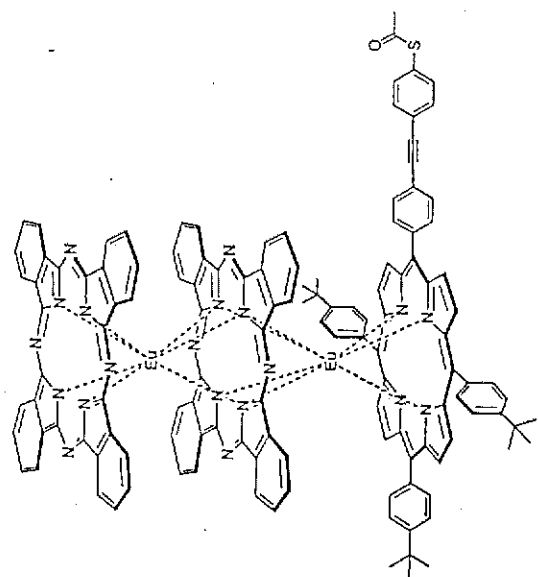
#	Name	Peaks (nm)	Abs (AU)
1	S-TD-2	341.0	1.91350
1		419.0	1.26210
1		618.0	0.78951
1		721.0	0.42677
1		523.0	0.35579
1		***	***

Report generated by :

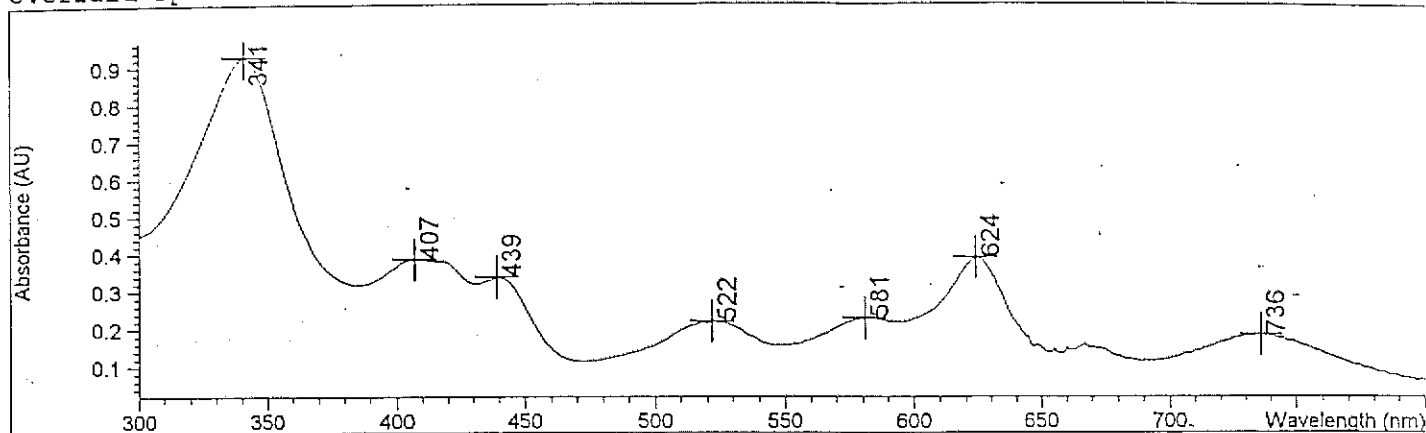
Signature:

*** End Spectrum/Peak Report ***





Overlaid Spectra:

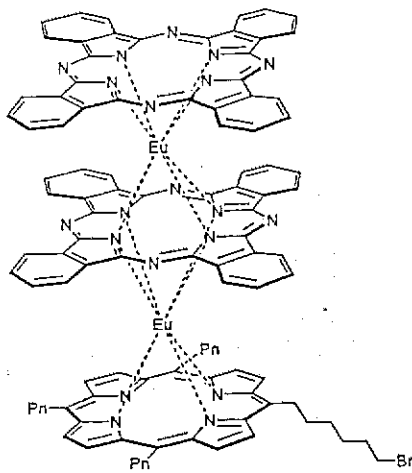


#	Name	Peaks (nm)	Abs (AU)
1		341.0	0.92760
1		624.0	0.38972
1		407.0	0.38667
1		439.0	0.33893
1		581.0	0.23009
1		522.0	0.22094
1		736.0	0.18483

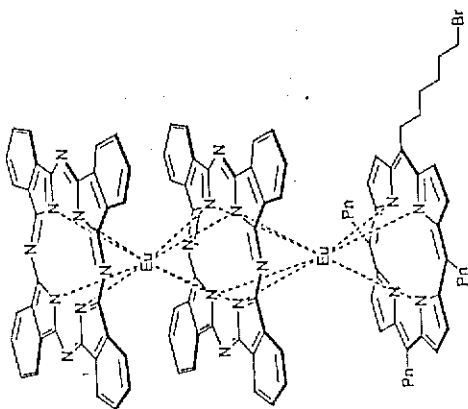
Report generated by :

Signature:

*** End Spectrum/Peak Report ***

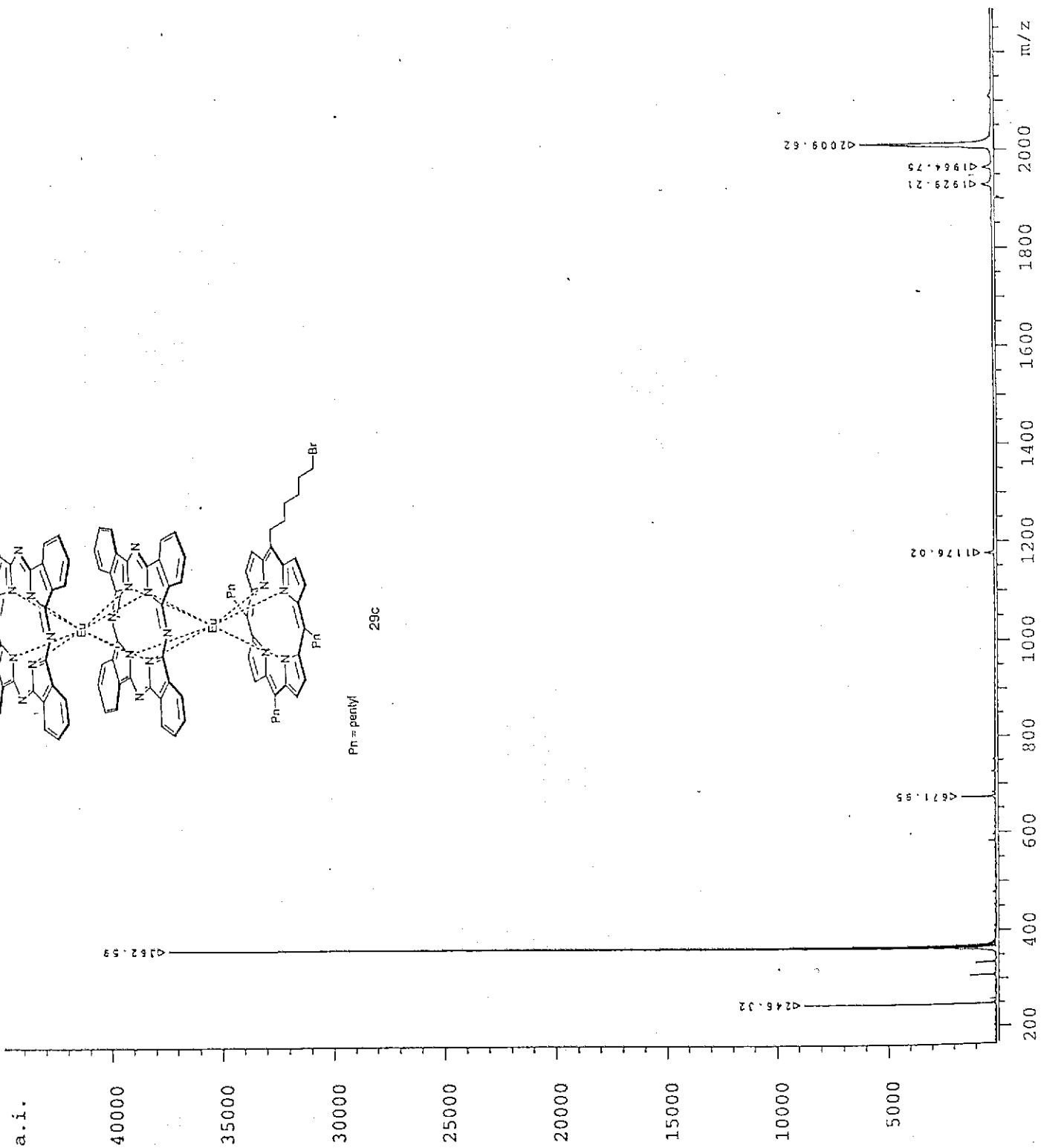


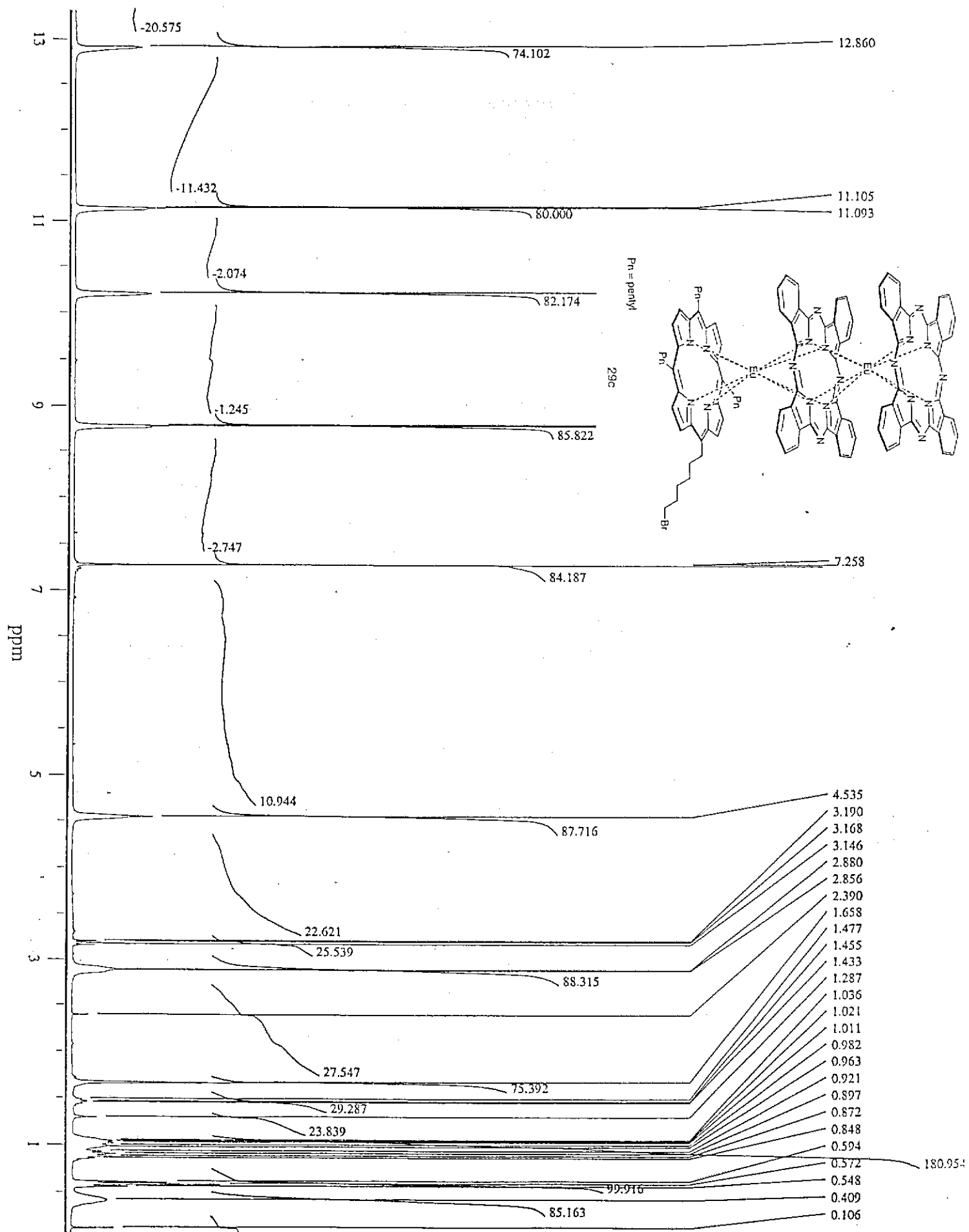
Pn = pentyl



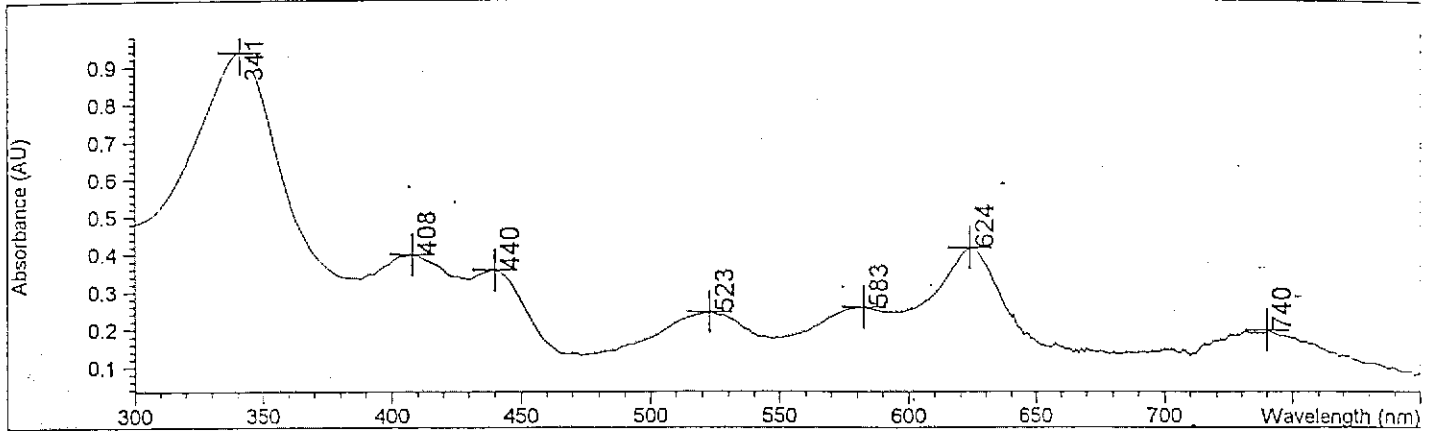
Ph = pentyl

29c





Overlaid Spectra:

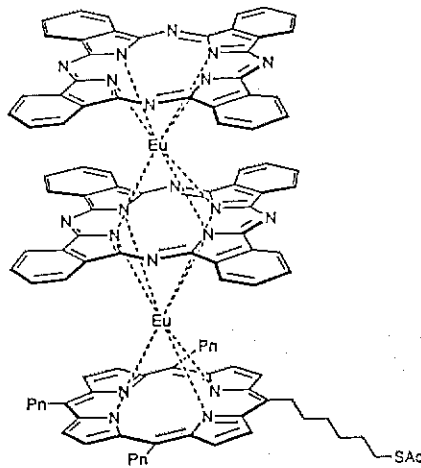


#	Name	Peaks (nm)	Abs (AU)
1		341.0	0.93751
1		624.0	0.41589
1		408.0	0.39994
1		440.0	0.35922
1		583.0	0.25847
1		523.0	0.24498
1		740.0	0.19618

Report generated by :

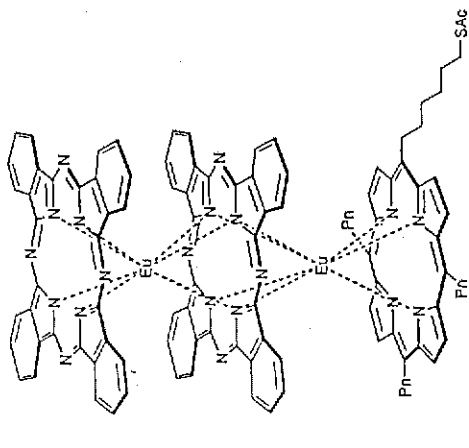
Signature:

*** End Spectrum/Peak Report ***



Pn = pentyl

TD5



Pn = pentyl

TD5

