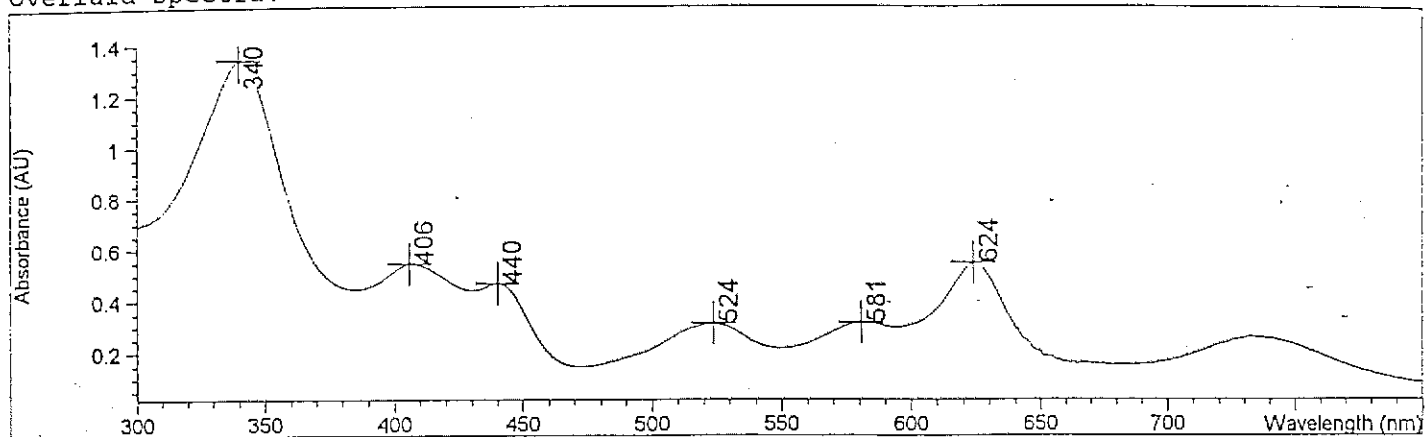


Overall spectra.

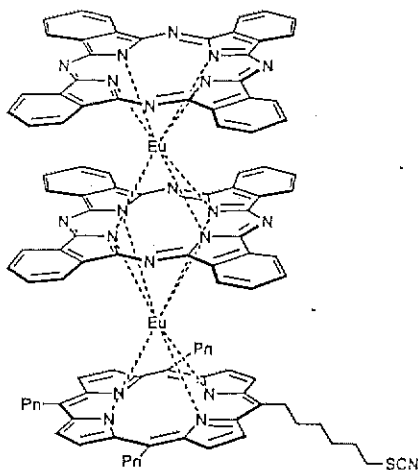


#	Name	Peaks (nm)	Abs (AU)
1		340.0	1.34100
1		624.0	0.54988
1		406.0	0.54604
1		440.0	0.47110
1		581.0	0.31807
1		524.0	0.31355

Report generated by :

Signature:

*** End Spectrum/Peak Report ***



Pn = pentyl

TDSCN

