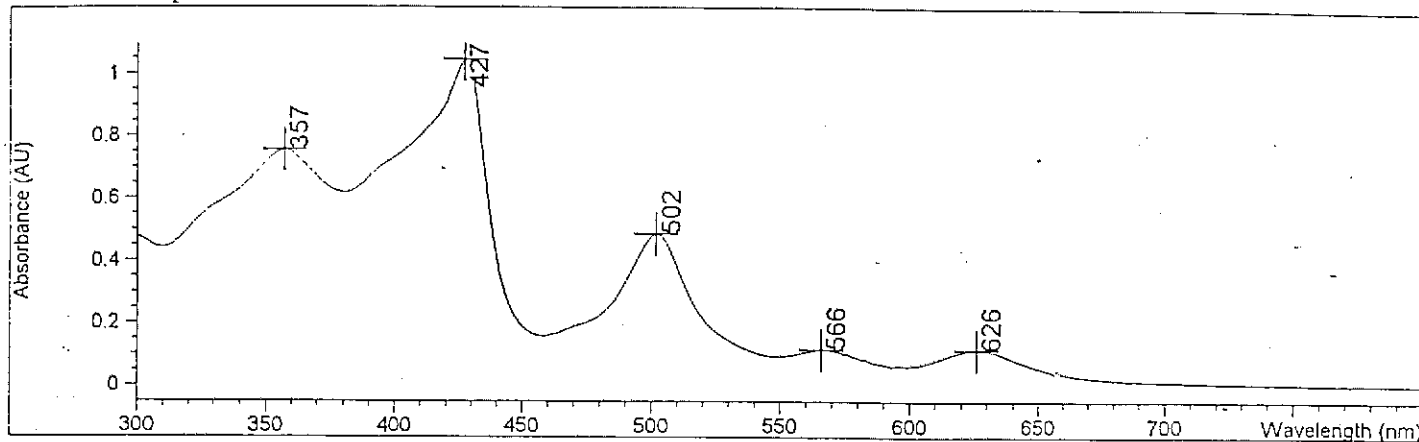


Overlaid Spectra:

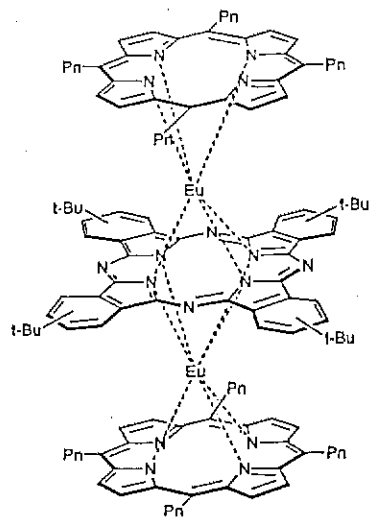


#	Name	Peaks (nm)	Abs (AU)
1		427.0	1.04440
1		357.0	0.75438
1		502.0	0.48679
1		626.0	0.11600
1		566.0	0.11515

Report generated by :

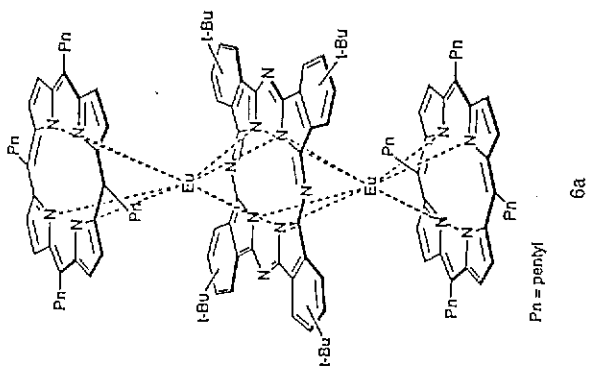
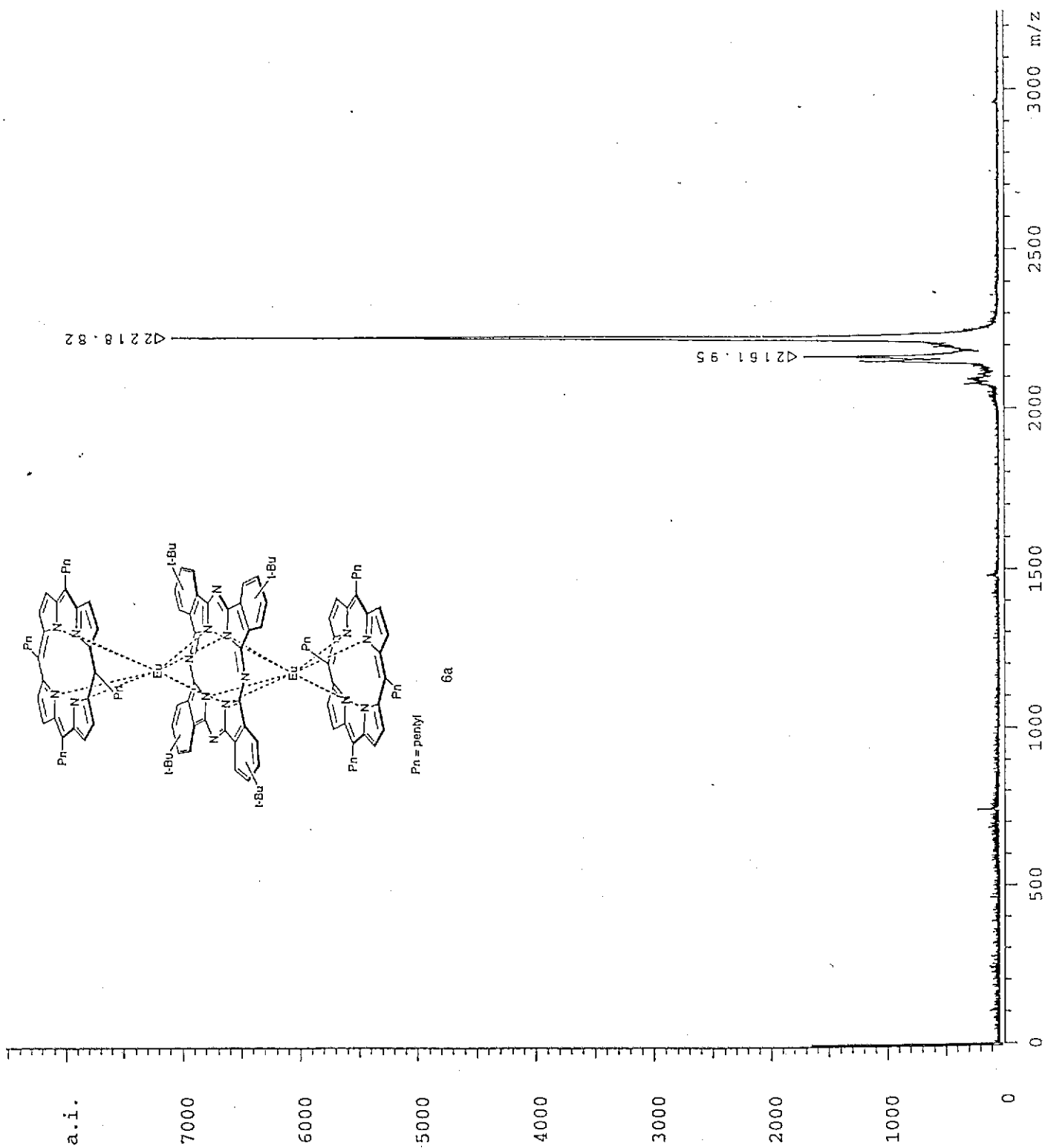
Signature:

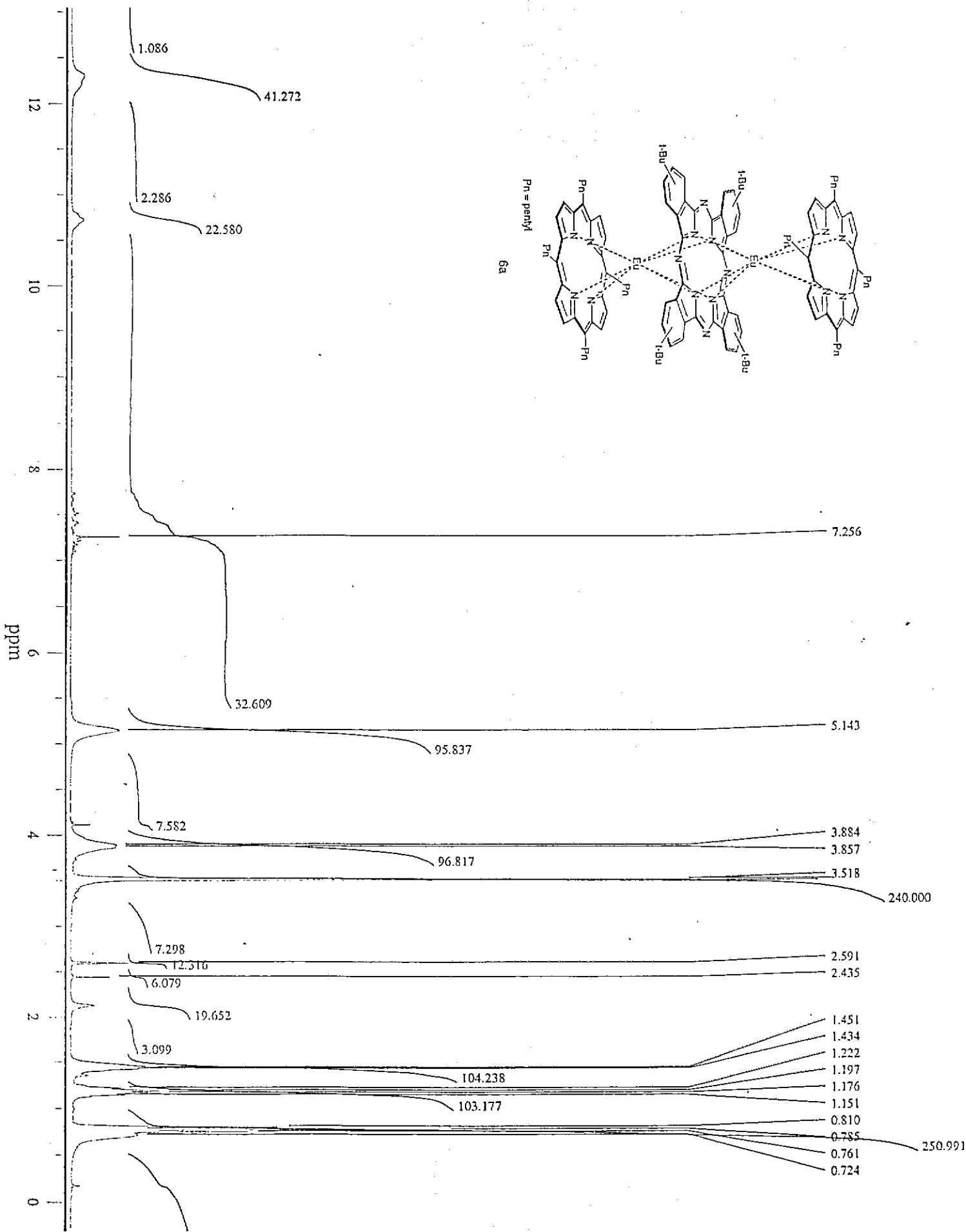
*** End Spectrum/Peak Report ***



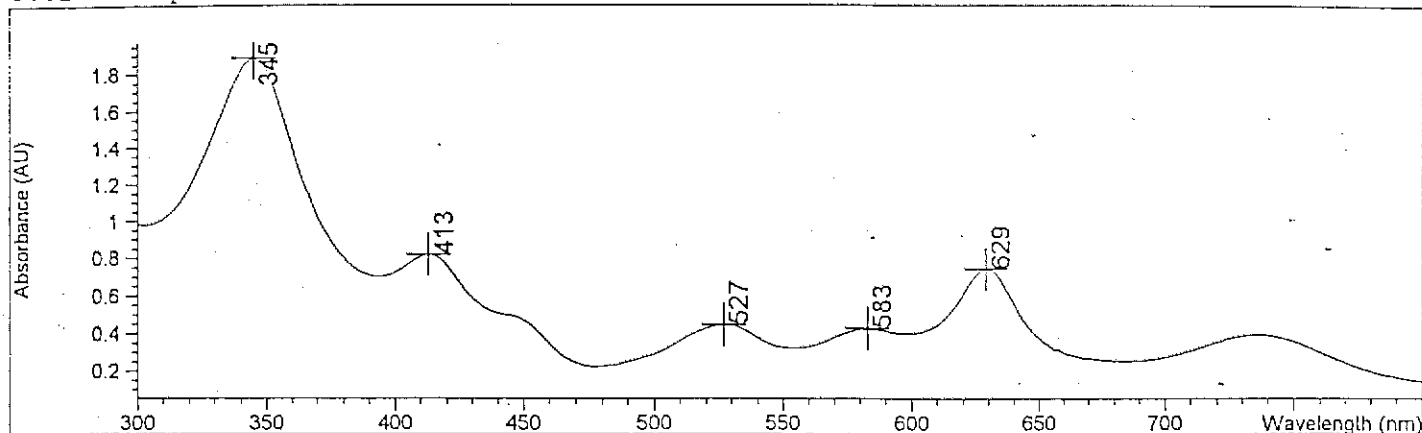
Pn = pentyl

6a





Overlaid Spectra:

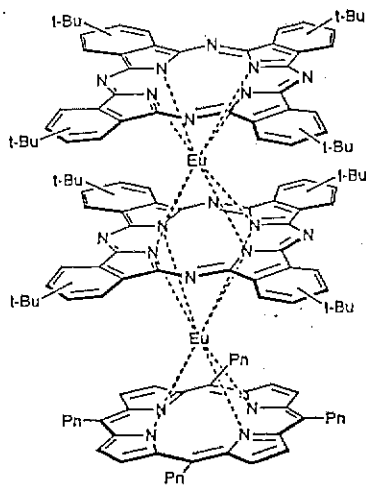


#	Name	Peaks (nm)	Abs (AU)
1		345.0	1.89050
1		413.0	0.82285
1		629.0	0.74813
1		527.0	0.44887
1		583.0	0.42958

Report generated by :

Signature:

*** End Spectrum/Peak Report ***



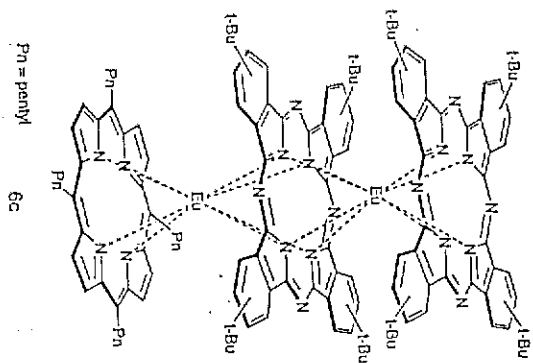
Pn = pentyl

6c

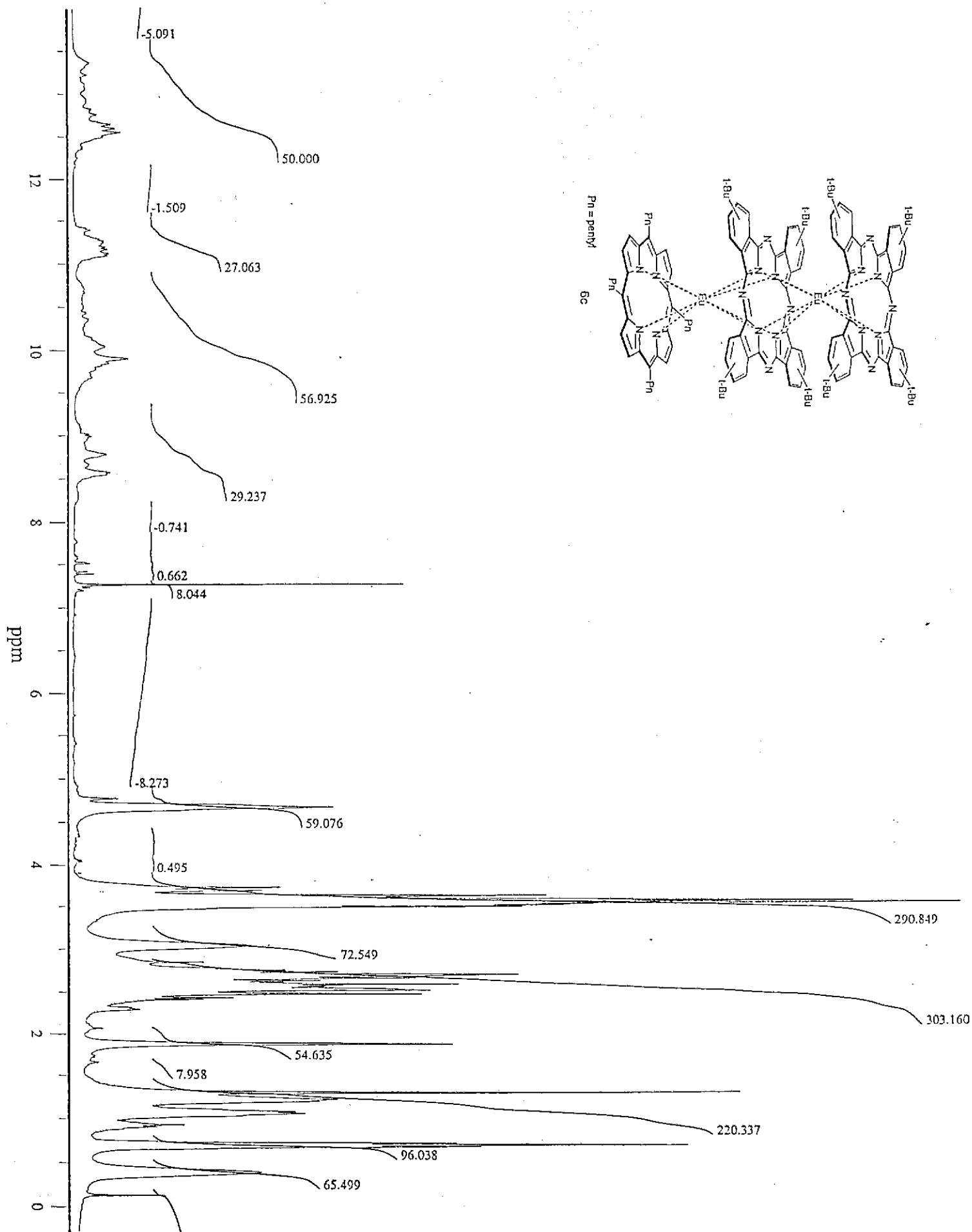
a.i.

6000
5000
4000
3000
2000
1000

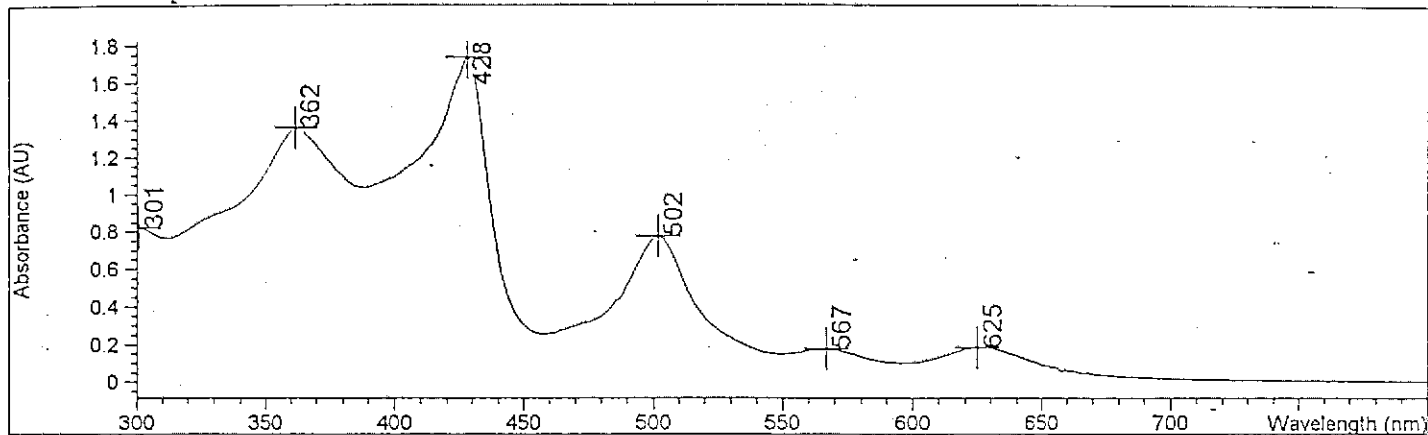
1500 2000 2500 3000 m/z



42373.99



Overlaid Spectra:

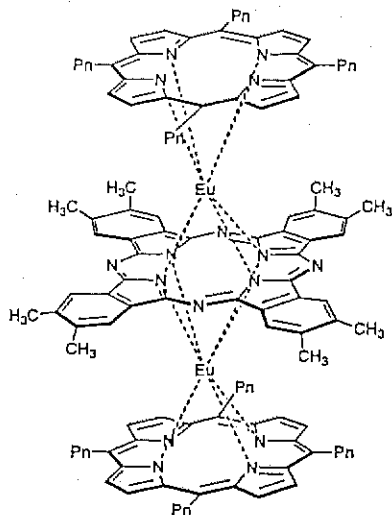


#	Name	Peaks (nm)	Abs (AU)
1		428.0	1.73790
1		362.0	1.36060
1		301.0	0.82247
1		502.0	0.77687
1		625.0	0.18555
1		567.0	0.17725

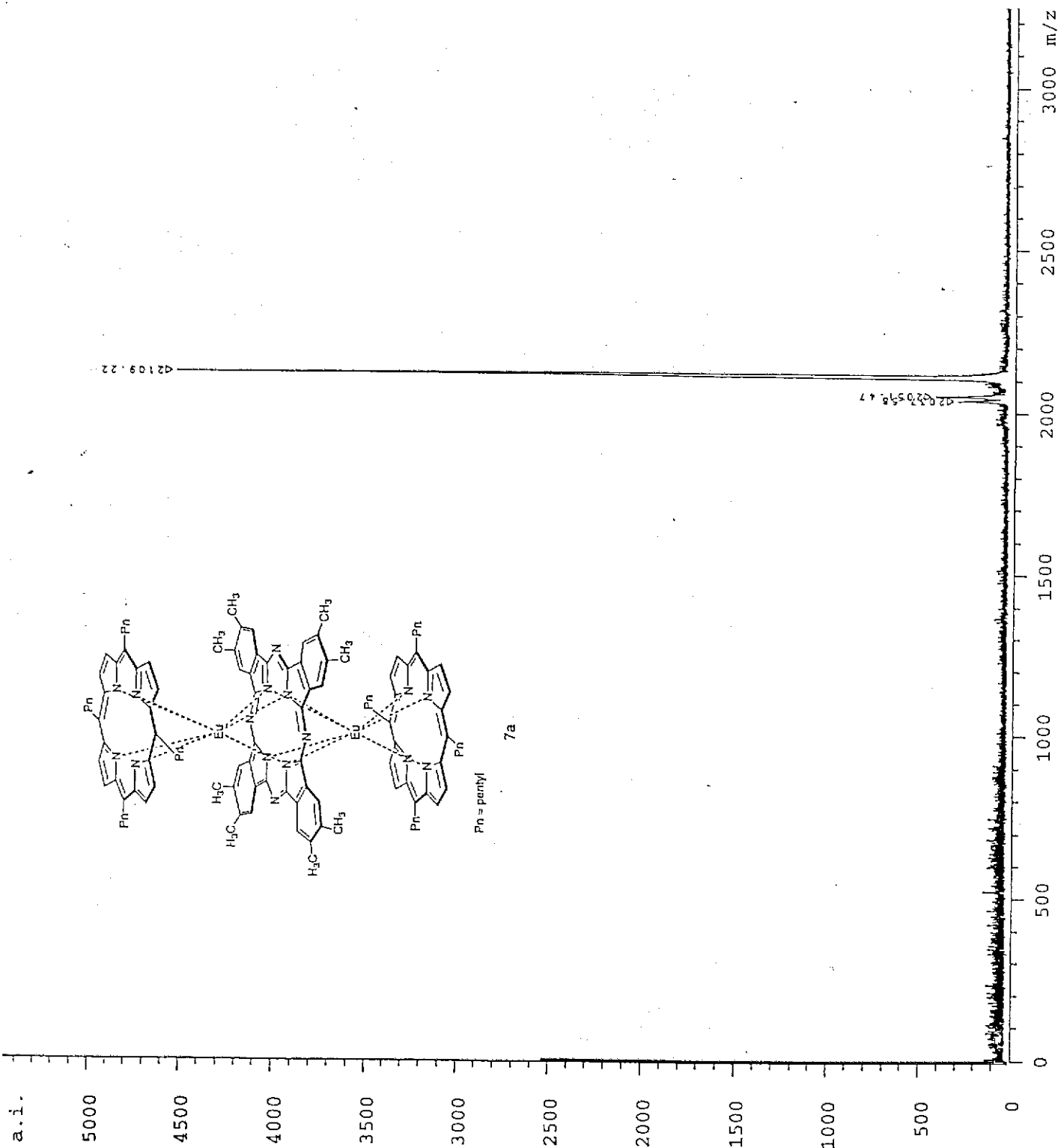
Report generated by :

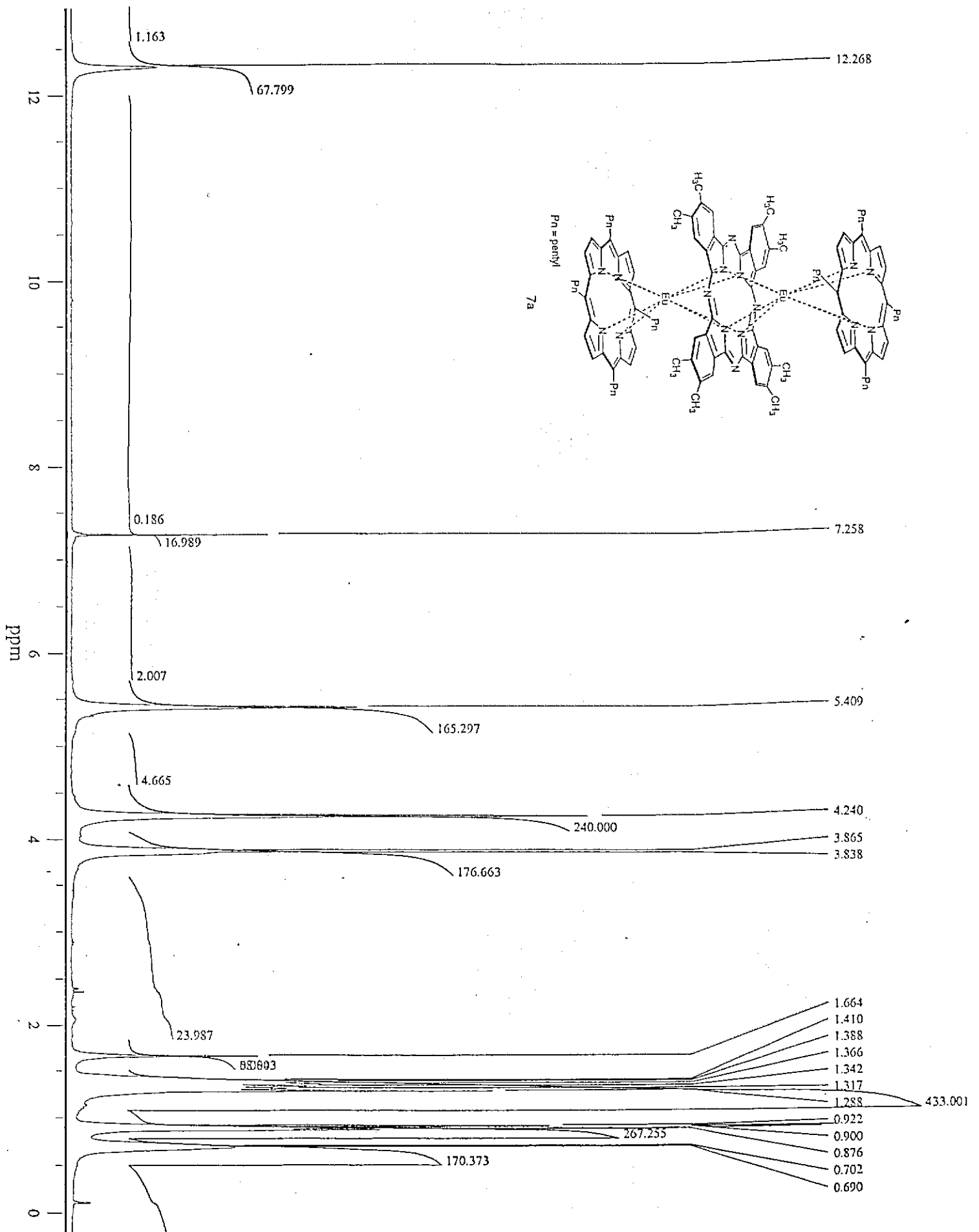
Signature:

*** End Spectrum/Peak Report ***

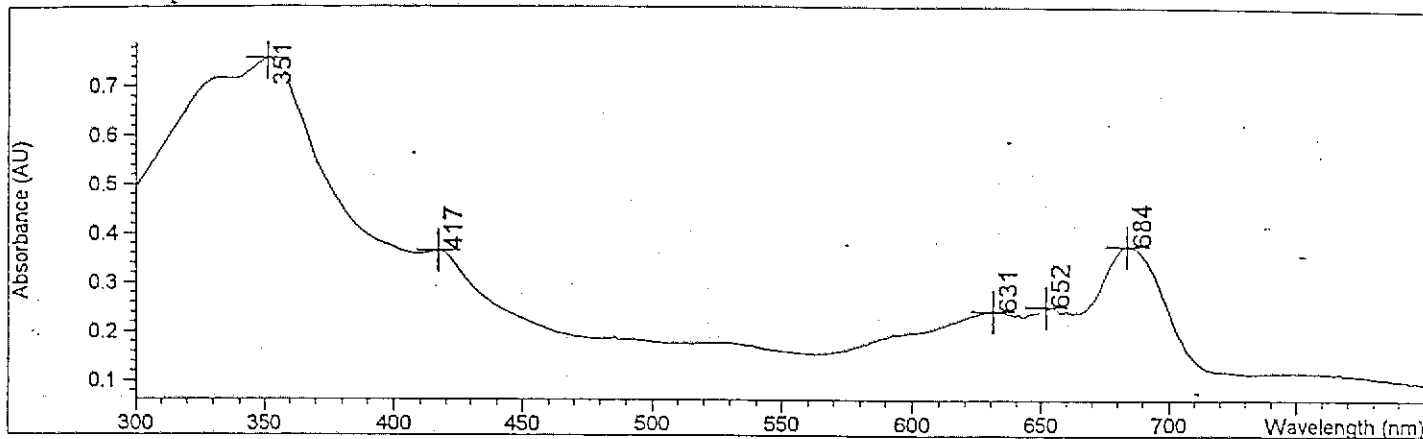


Pn = pentyll





Overlaid Spectra:

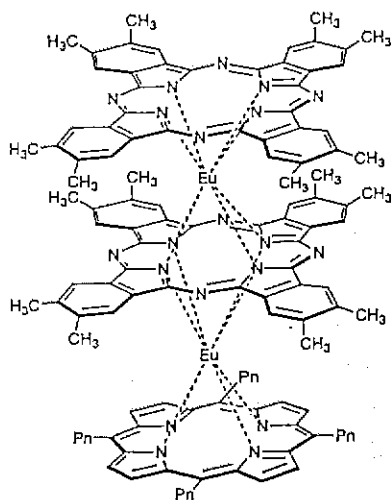


#	Name	Peaks (nm)	Abs (AU)
1		351.0	0.75644
1		684.0	0.37591
1		417.0	0.36535
1		652.0	0.25342
1		631.0	0.24327

Report generated by :

Signature:

*** End Spectrum/Peak Report ***



Pn = pentyl