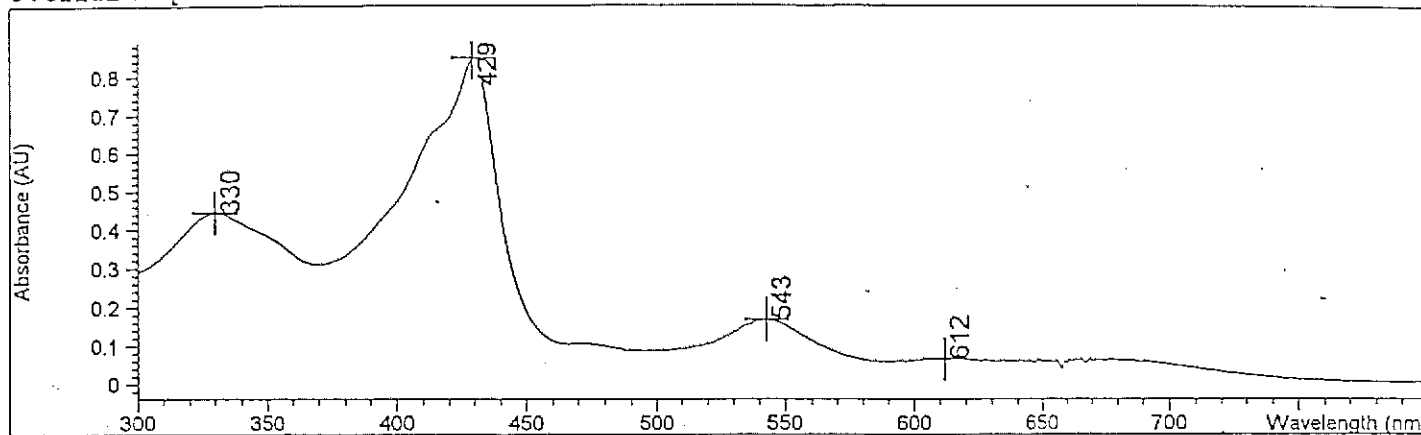


Overlaid Spectra:

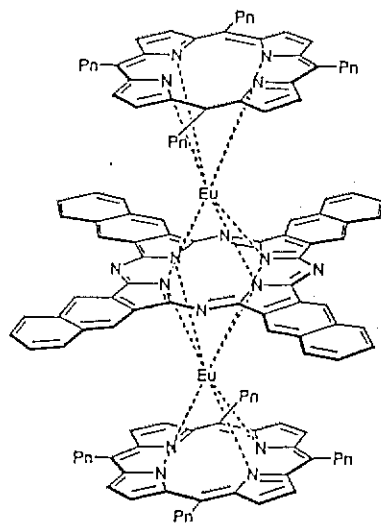


#	Name	Peaks (nm)	Abs (AU)
1		429.0	0.85064
1		330.0	0.44538
1		543.0	0.16993
1		612.0	6.6625E-2
1		***	***
1		***	***

Report generated by :

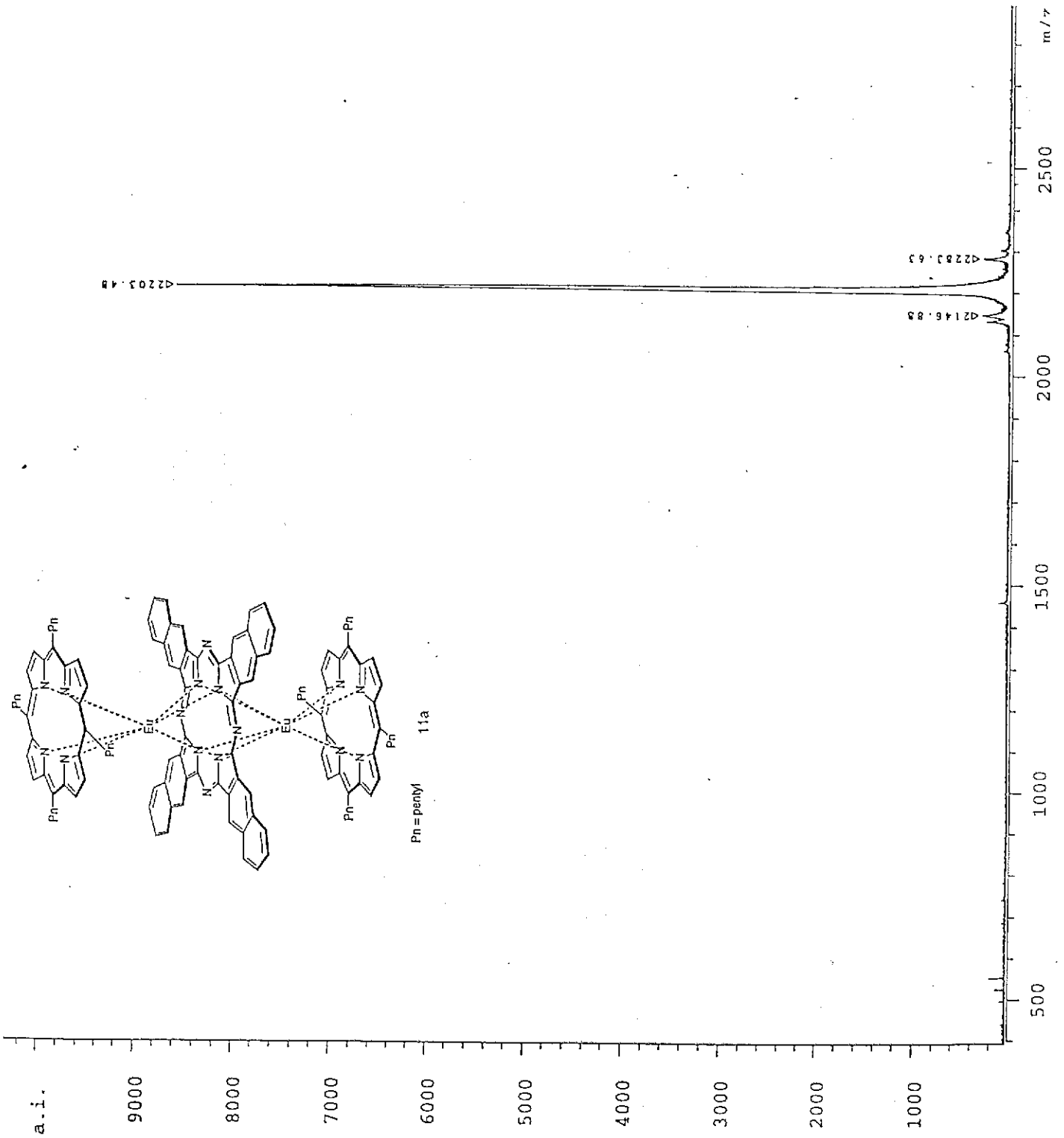
Signature: .....

\*\*\* End Spectrum/Peak Report \*\*\*



Pn = pentyl

11a



a.i.

9000

8000

7000

6000

5000

4000

3000

2000

1000

500

1000

1500

2000

2500

m/γ

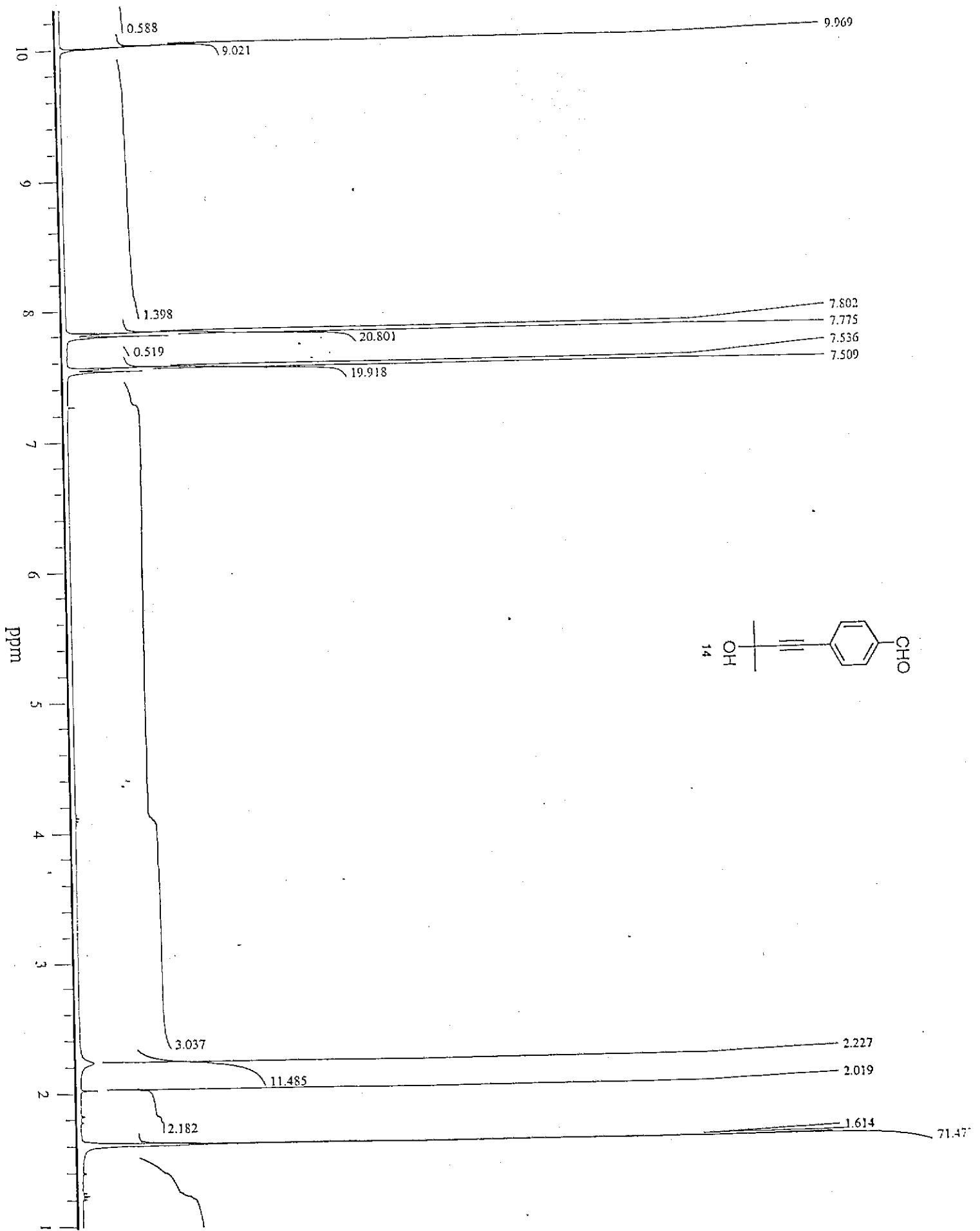
Δ2203.48

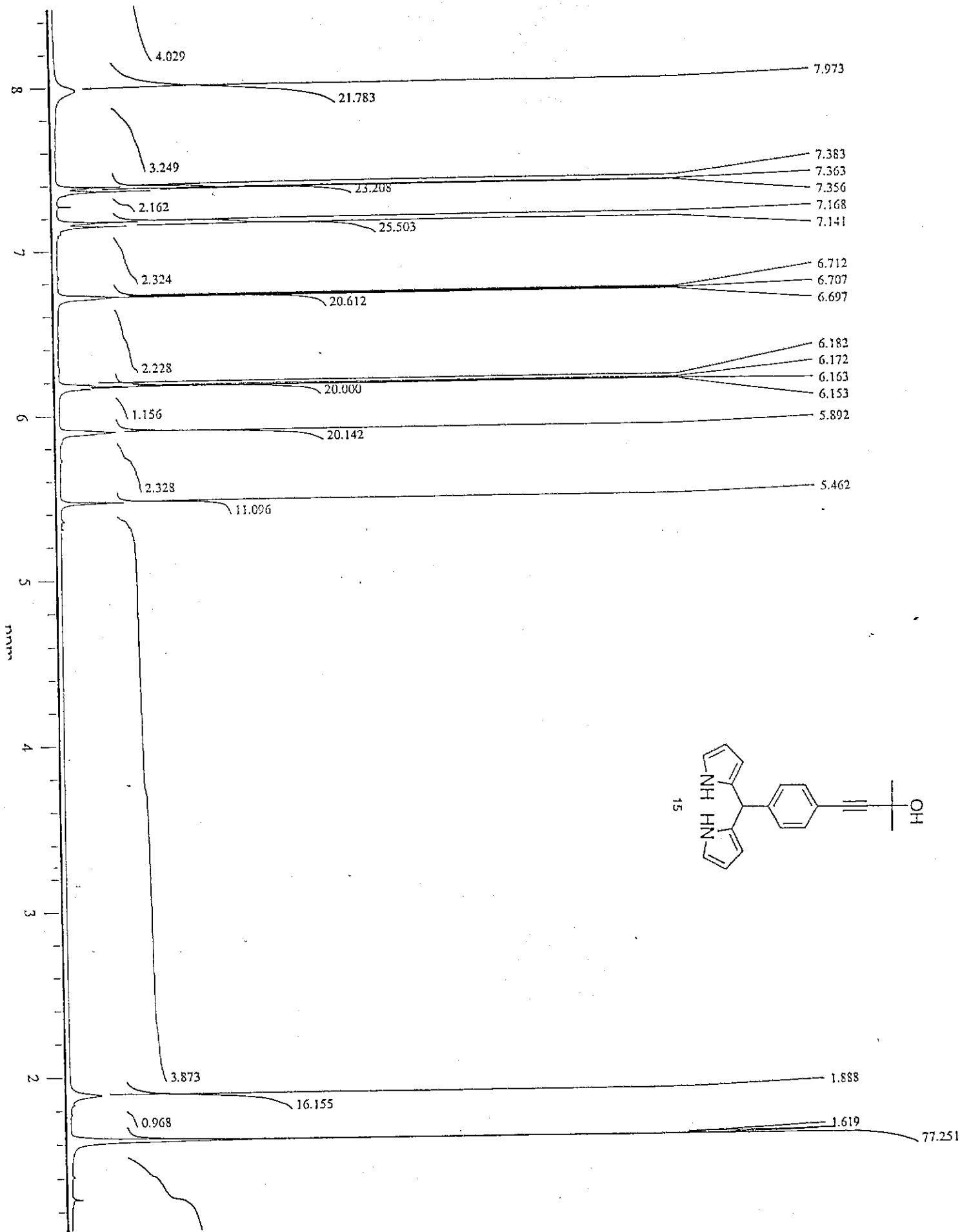
Δ2146.25

Δ2282.63

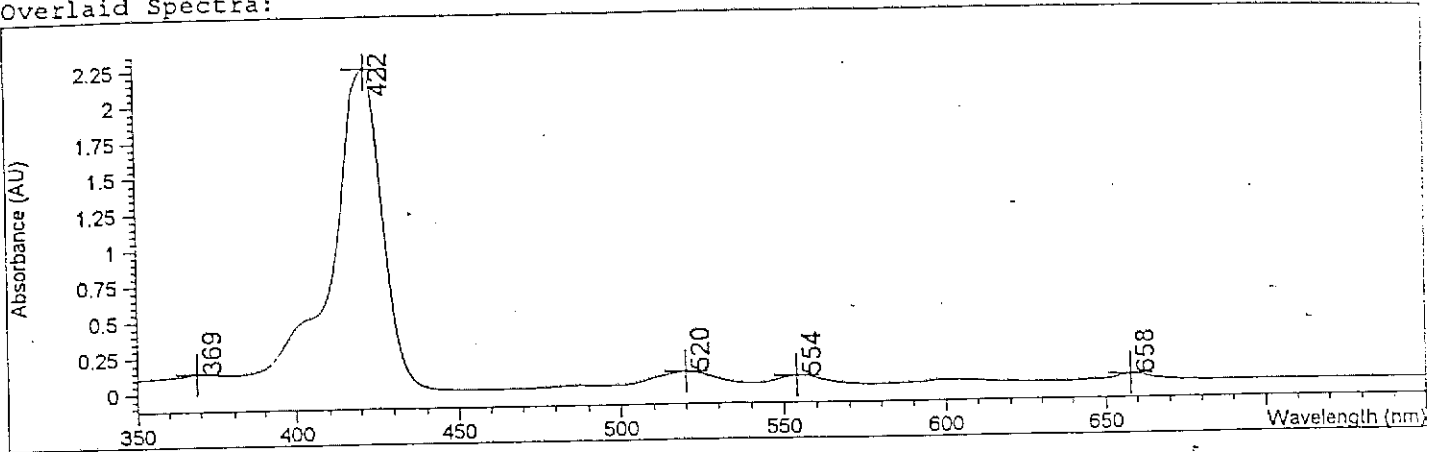
Pn = phenyl

11a





Overlaid Spectra:

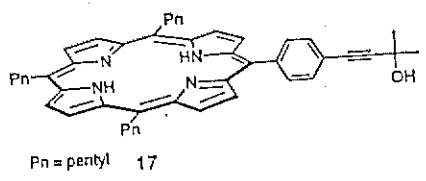


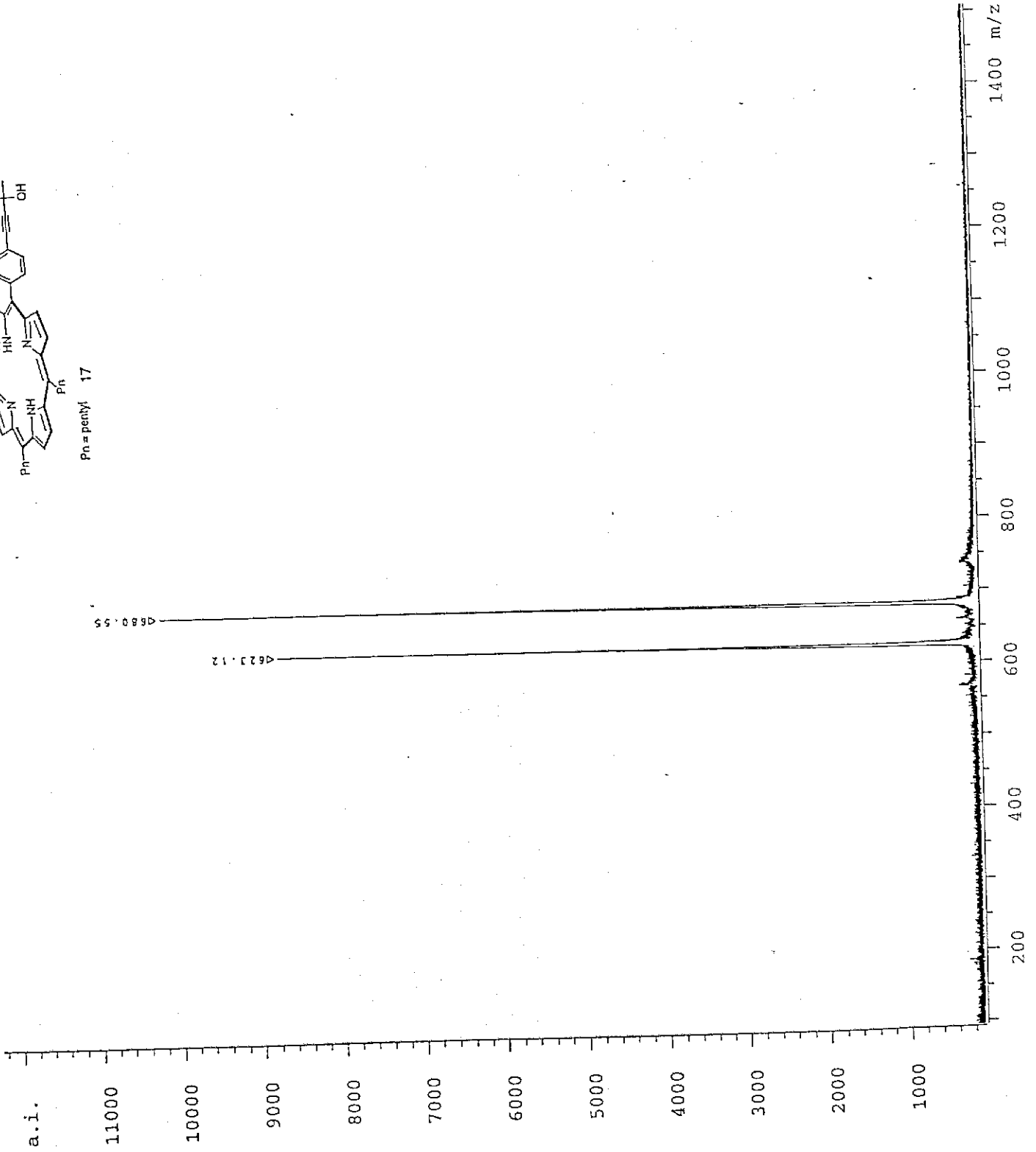
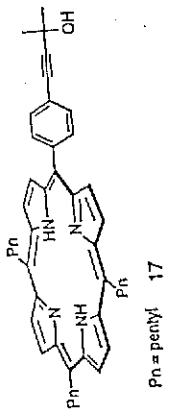
#	Name	Peaks (nm)	Abs (AU)
1		422.0	2.24420
1		369.0	0.14002
1		520.0	0.10408
1		554.0	6.6622E-2
1		658.0	4.4914E-2

Report generated by :

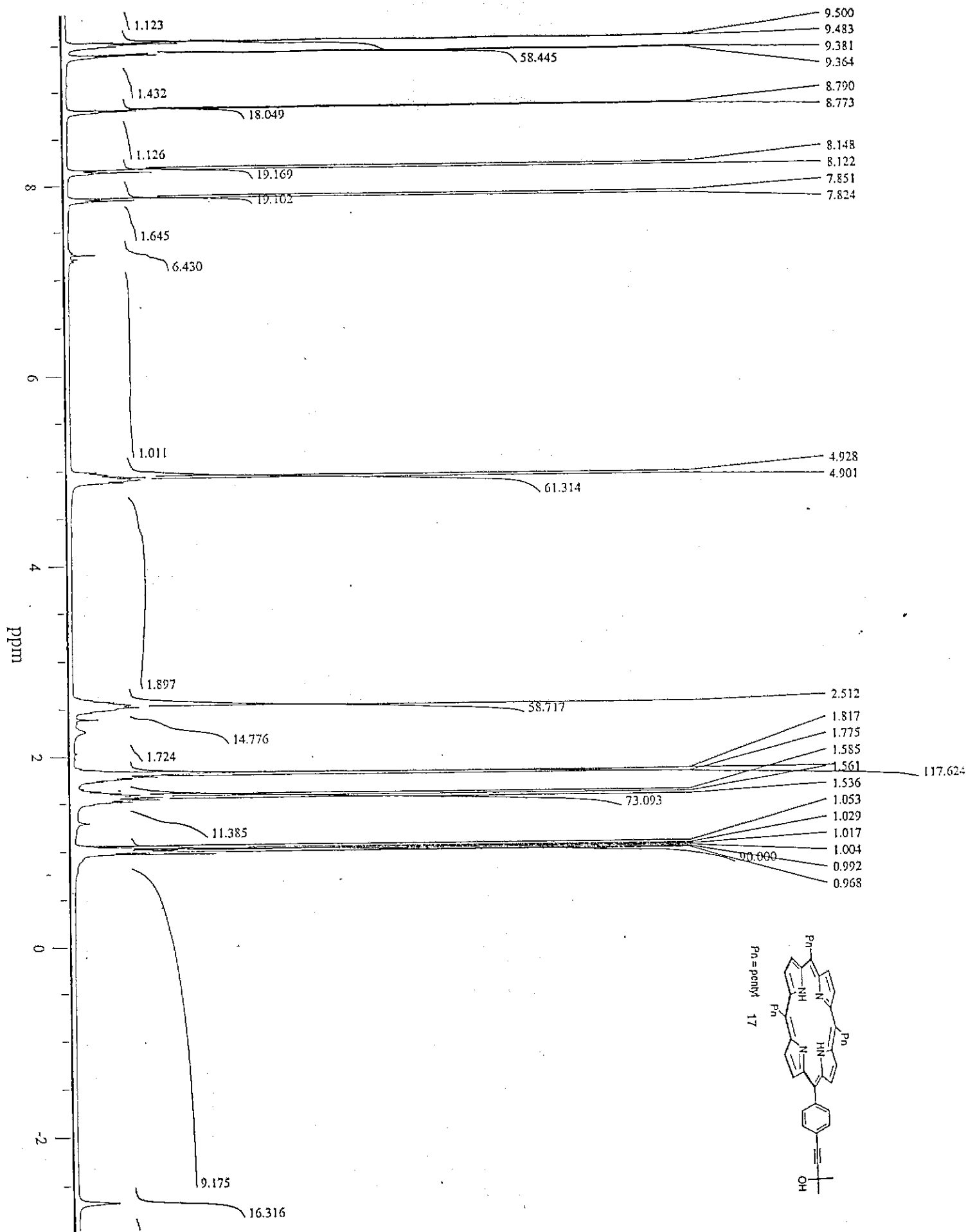
Signature: .....

\*\*\* End Spectrum/Peak Report \*\*\*

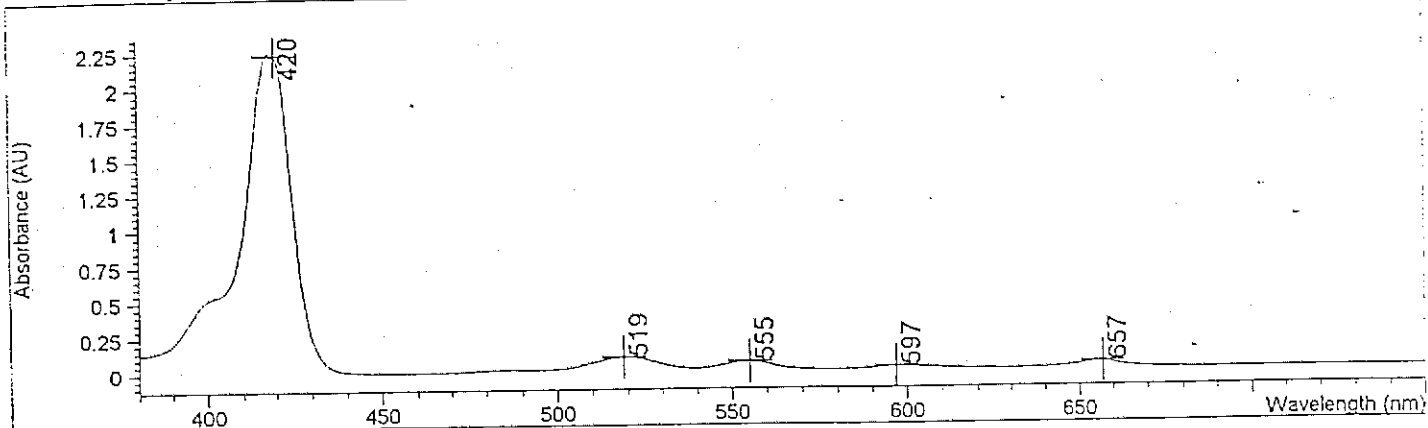








Overlaid Spectra:

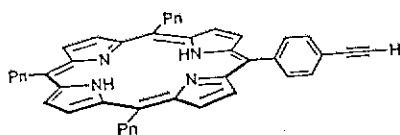


#	Name	Peaks (nm)	Abs (AU)
1		420.0	2.23490
1		519.0	9.8045E-2
1		555.0	5.9479E-2
1		657.0	3.9609E-2
1		597.0	2.1038E-2

Report generated by :

Signature: .....

\*\*\* End Spectrum/Peak Report \*\*\*



Pn = pentylyl 18