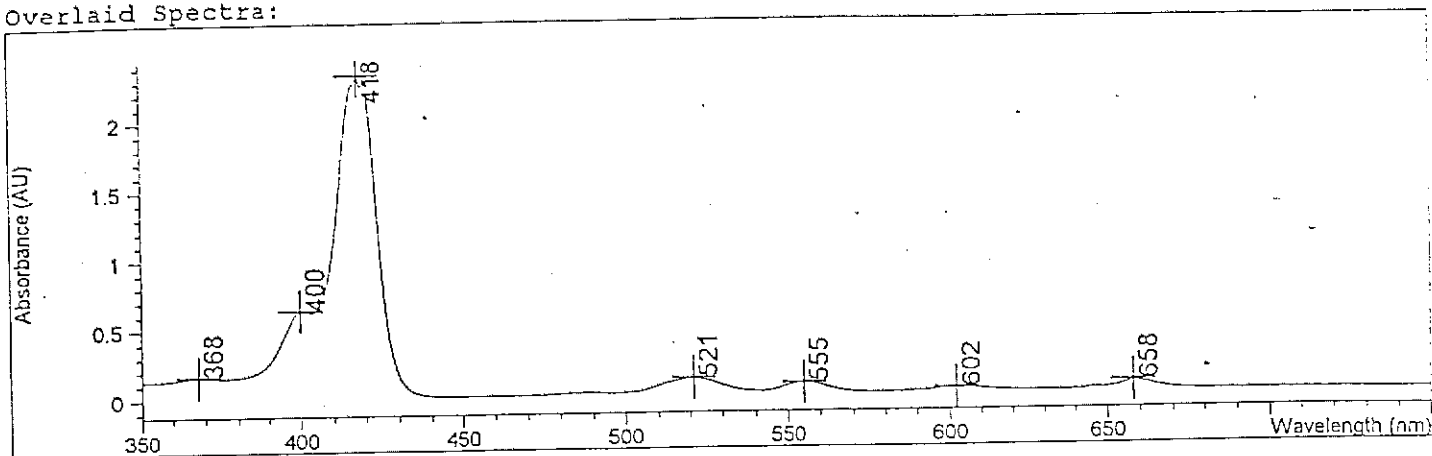


Overlaid Spectra:

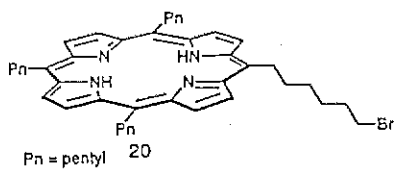


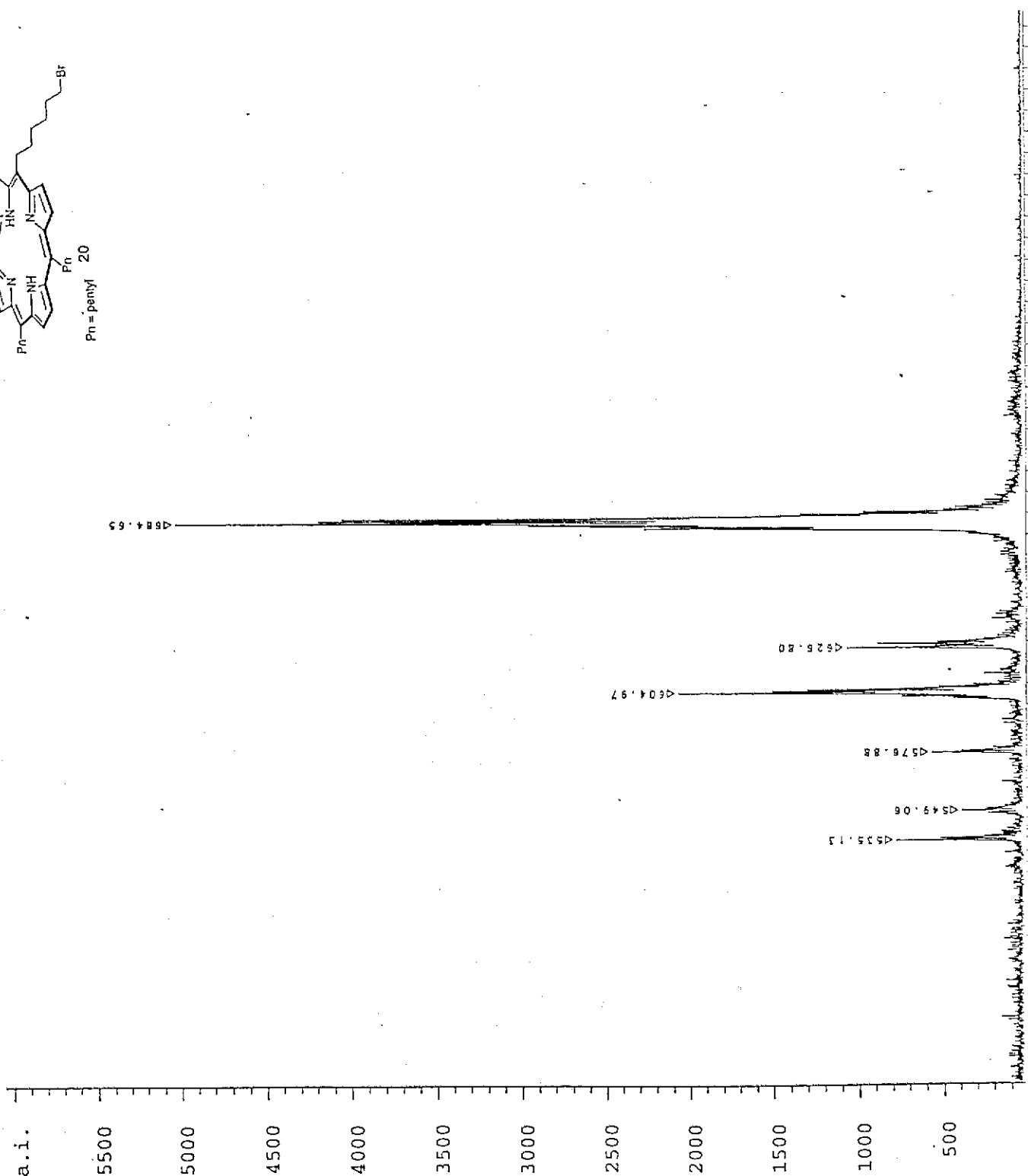
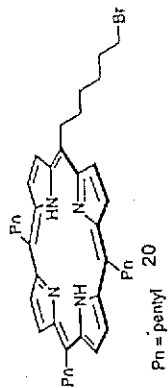
#	Name	Peaks (nm)	Abs (AU)
1		418.0	2.34250
1		400.0	0.63803
1		368.0	0.16588
1		521.0	0.11697
1		555.0	7.8193E-2
1		658.0	7.0636E-2
1		602.0	2.9436E-2

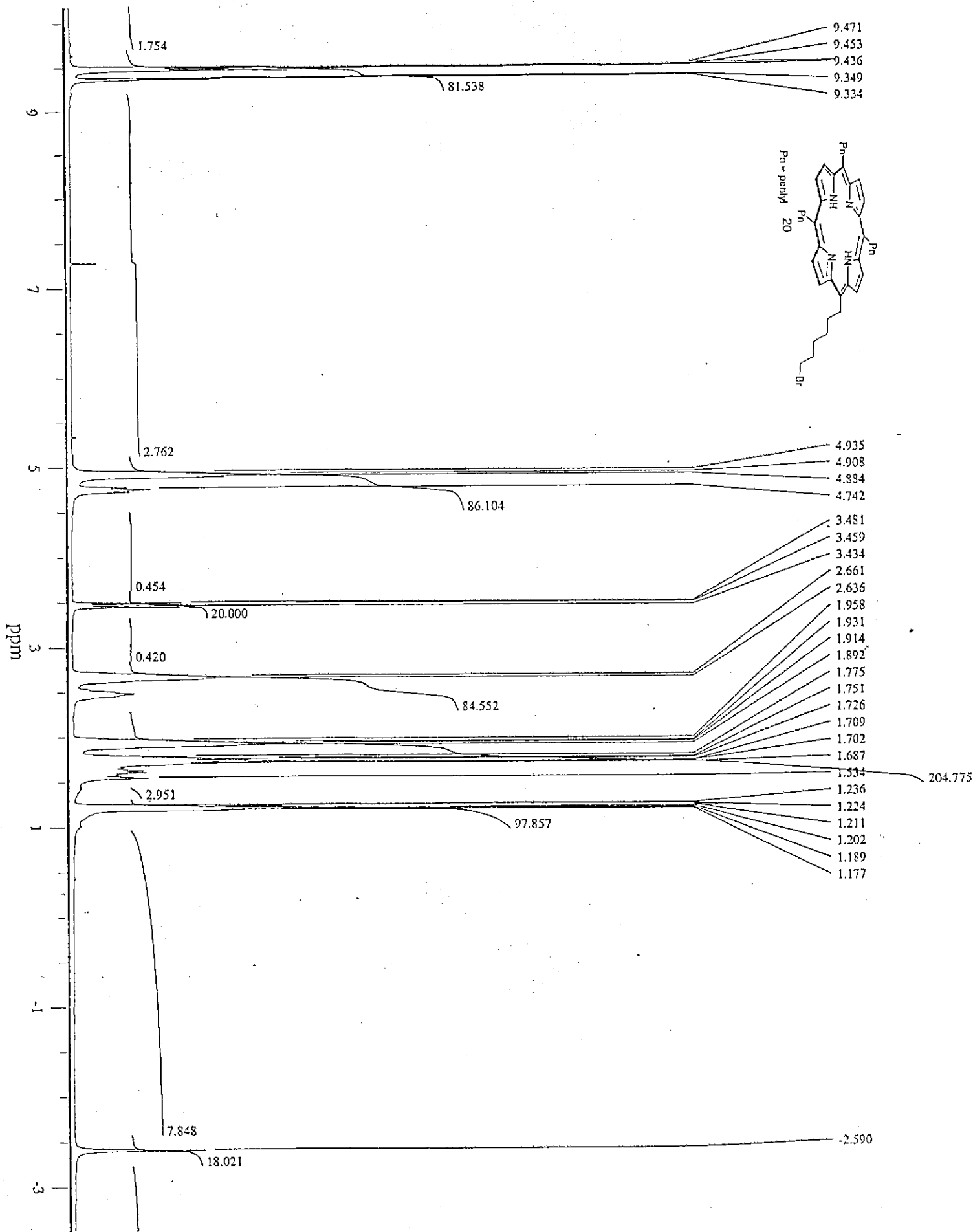
Report generated by :

Signature: .....

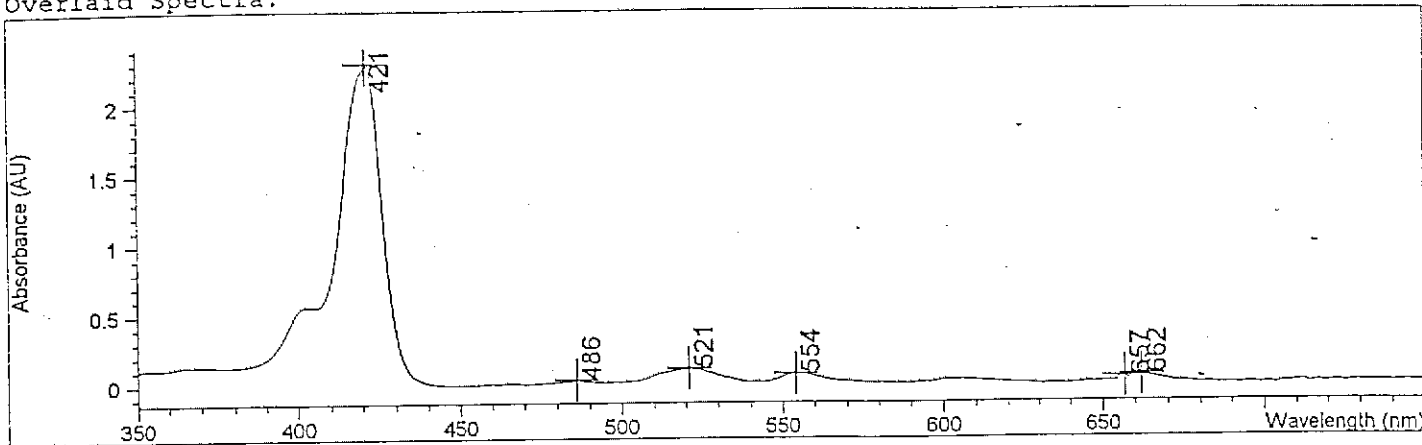
\*\*\* End Spectrum/Peak Report \*\*\*







Overlaid Spectra:

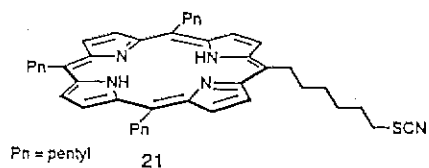


#	Name	Peaks (nm)	Abs (AU)
1		421.0	2.30560
1		521.0	0.10734
1		554.0	6.8851E-2
1		662.0	4.8553E-2
1		657.0	3.6391E-2
1		486.0	3.1599E-2

Report generated by :

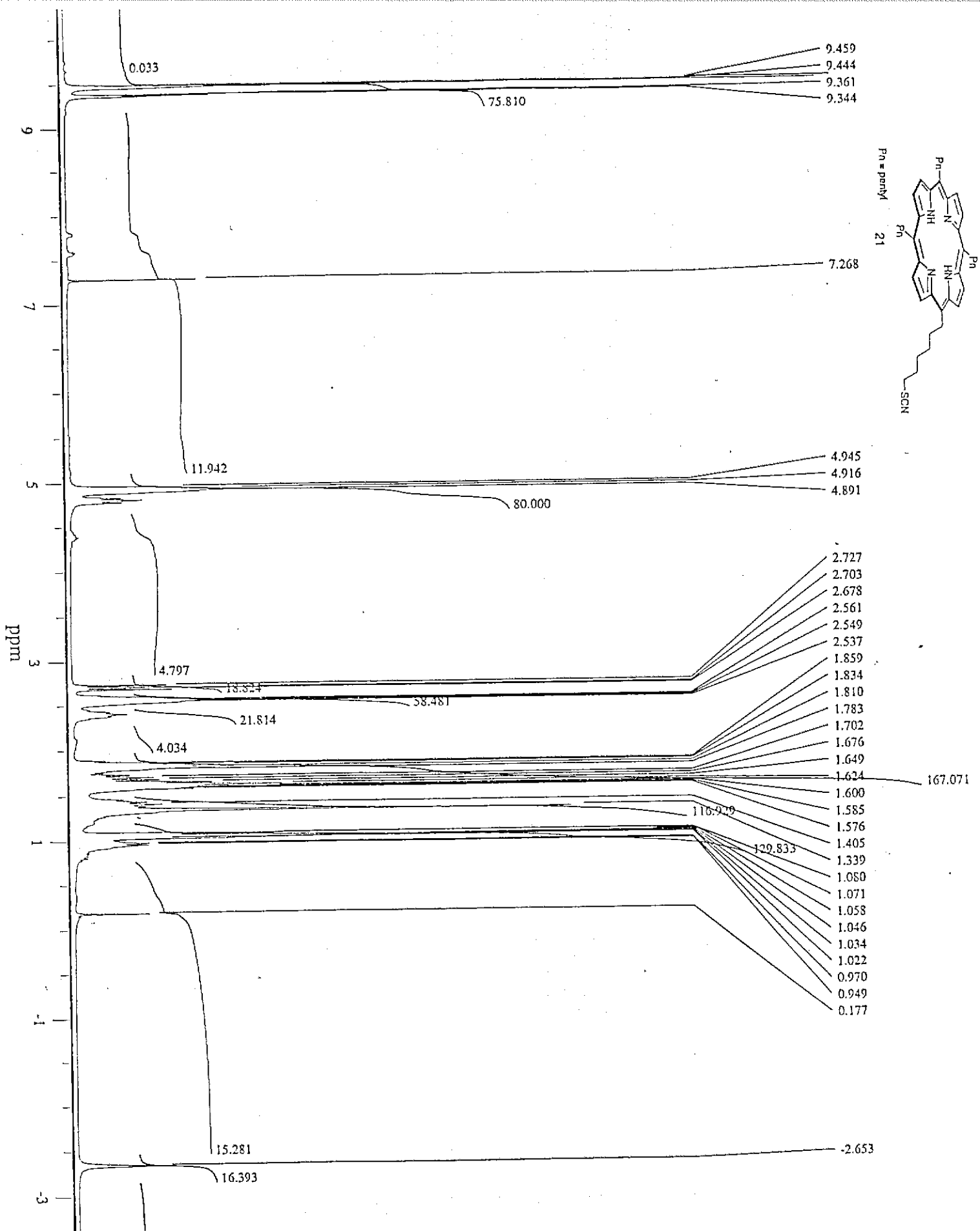
Signature: .....

\*\*\* End Spectrum/Peak Report \*\*\*

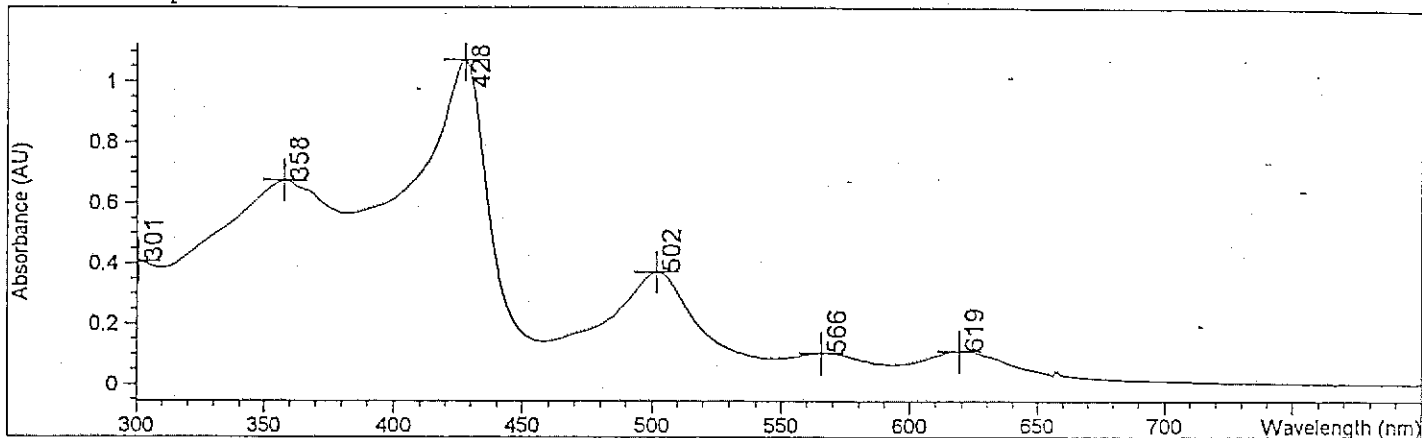








Overlaid Spectra:



#	Name	Peaks (nm)	Abs (AU)
1		428.0	1.07210
1		358.0	0.67412
1		301.0	0.40633
1		502.0	0.37057
1		619.0	0.10931
1		566.0	0.10291

Report generated by :

Signature: .....

\*\*\* End Spectrum/Peak Report \*\*\*

