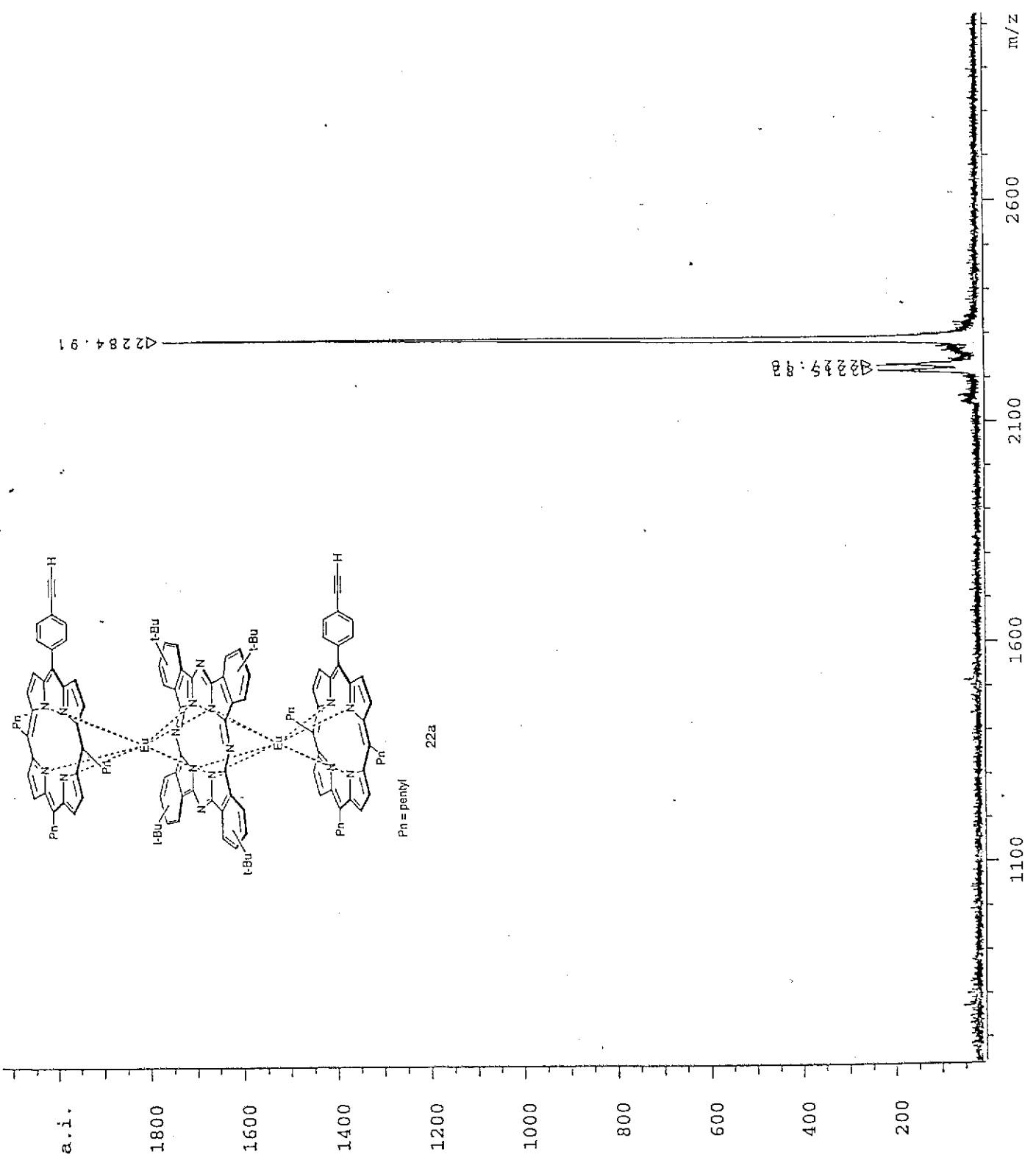
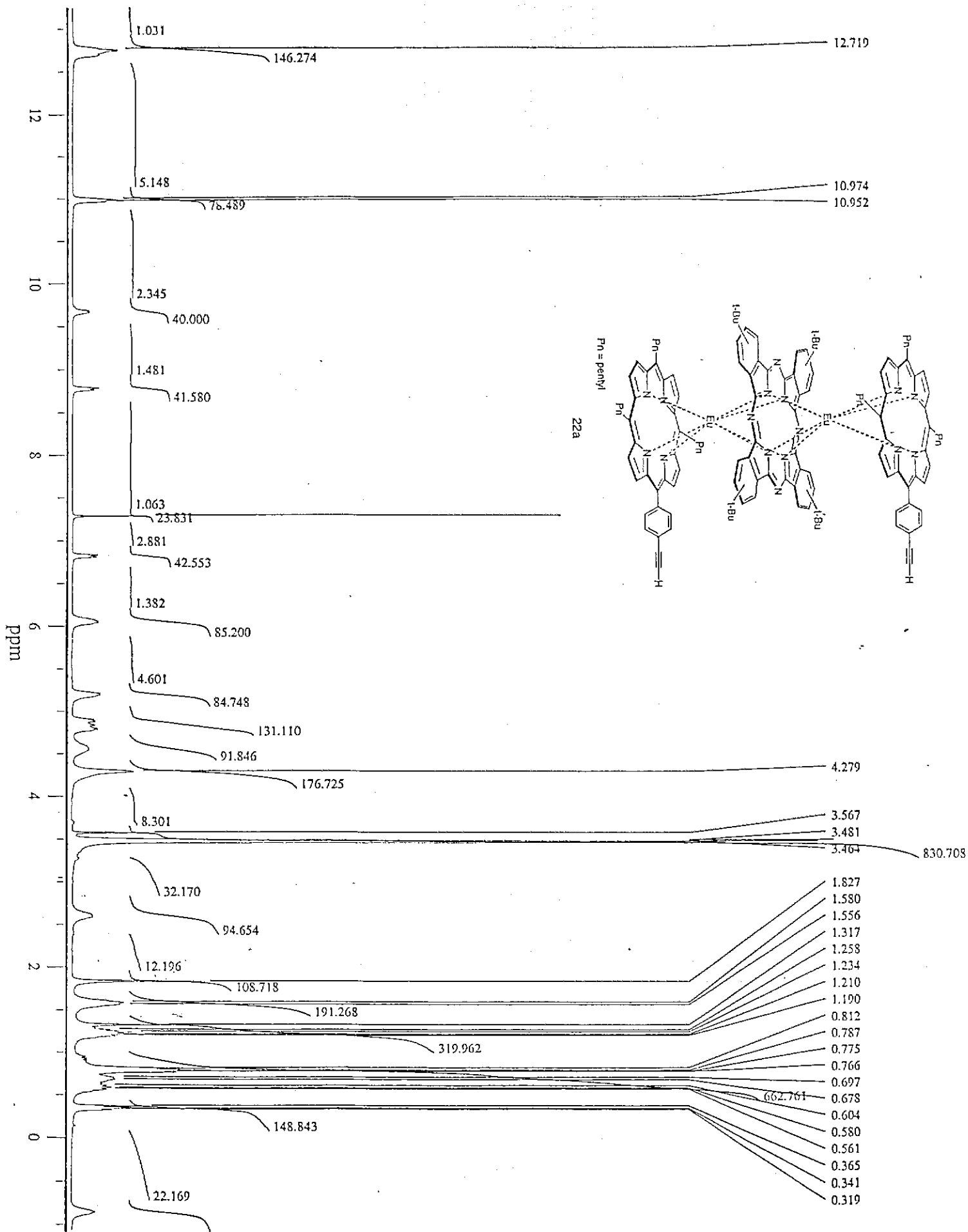
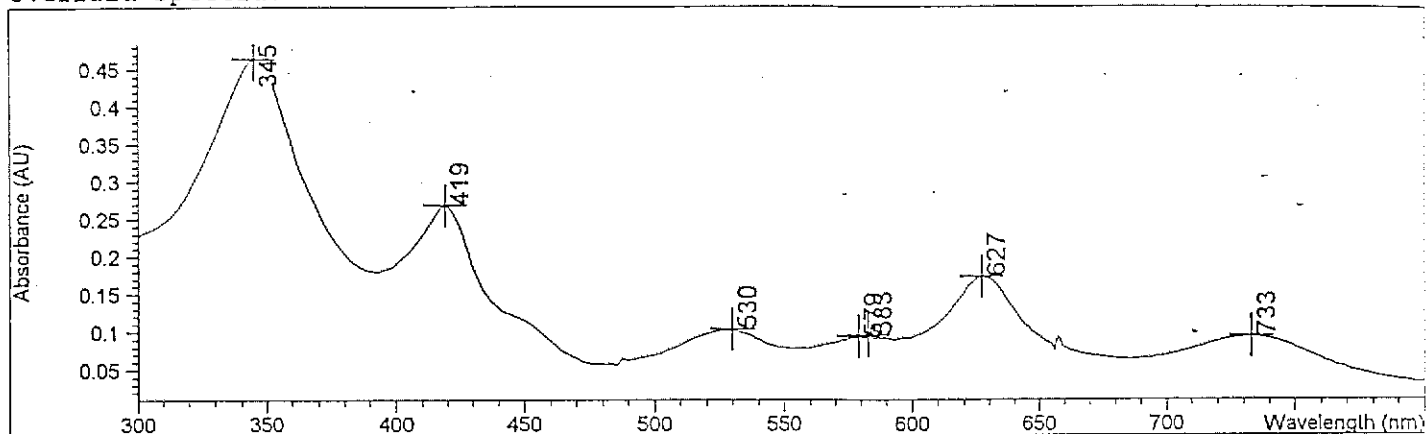


Ph = phenyl





Overlaid Spectra:

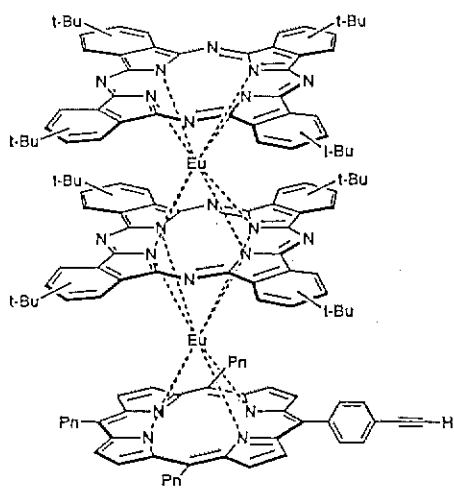


#	Name	Peaks (nm)	Abs (AU)
1		345.0	0.46398
1		419.0	0.26867
1		627.0	0.17319
1		530.0	0.10311
1		583.0	9.6027E-2
1		579.0	9.3989E-2
1		733.0	9.3691E-2

Report generated by :

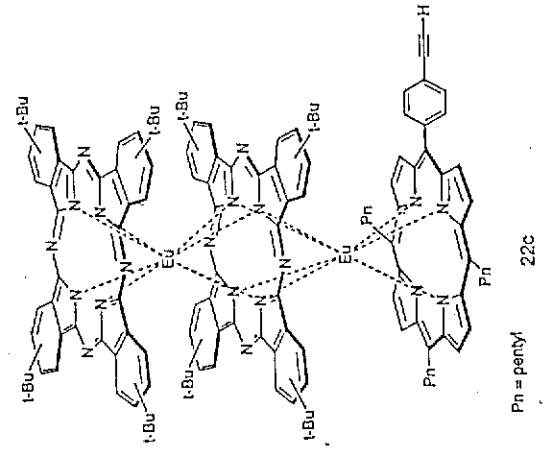
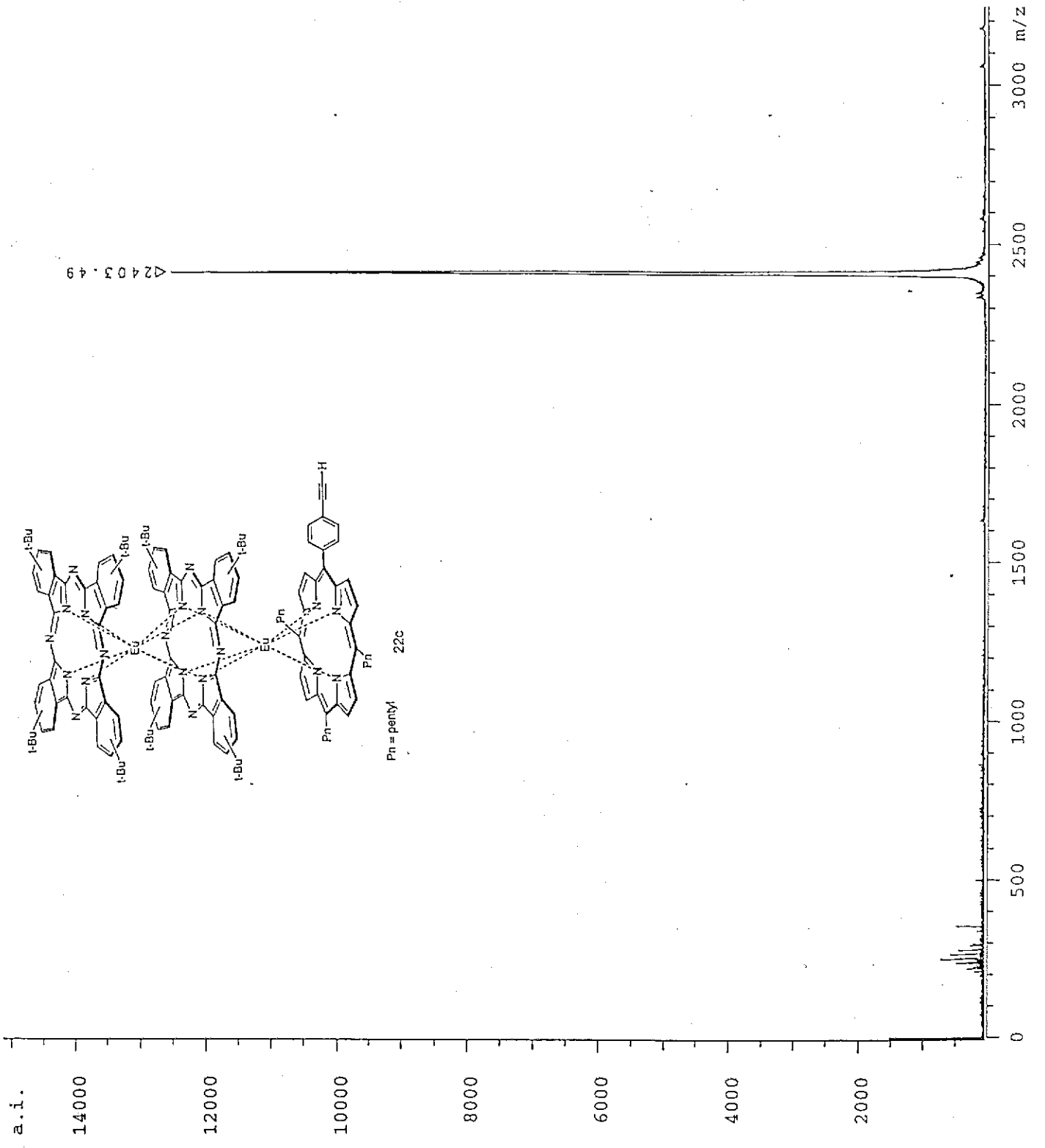
Signature: .....

\*\*\* End Spectrum/Peak Report \*\*\*

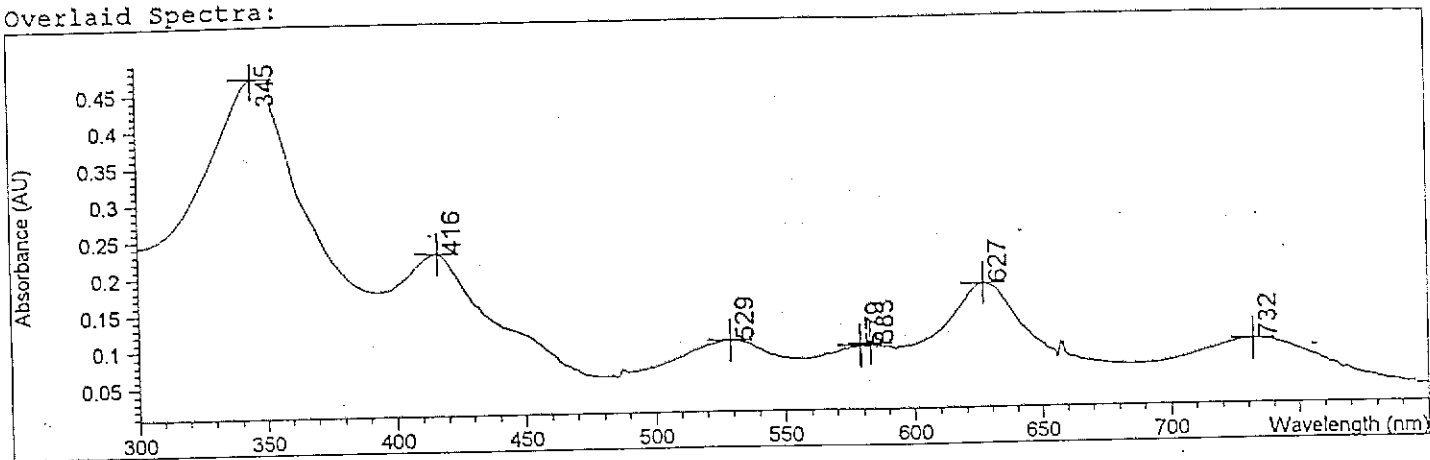


Pn = pentyl

22c



Overlaid Spectra:

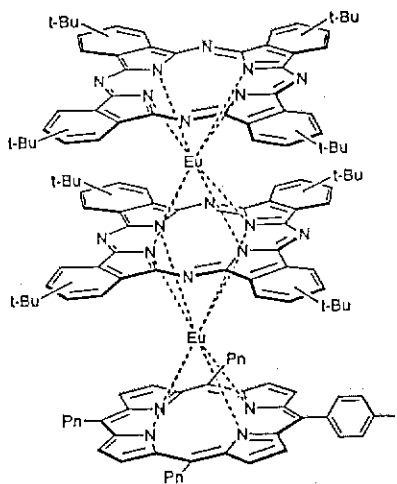


#	Name	Peaks (nm)	Abs (AU)
1		345.0	0.46997
1		416.0	0.22842
1		627.0	0.17589
1		529.0	0.10399
1		583.0	9.7350E-2
1		579.0	9.4756E-2
1		732.0	9.4451E-2

Report generated by :

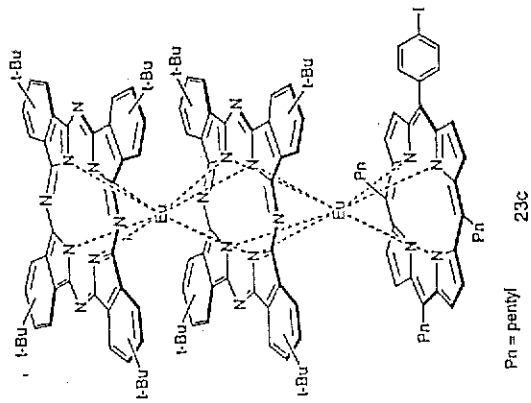
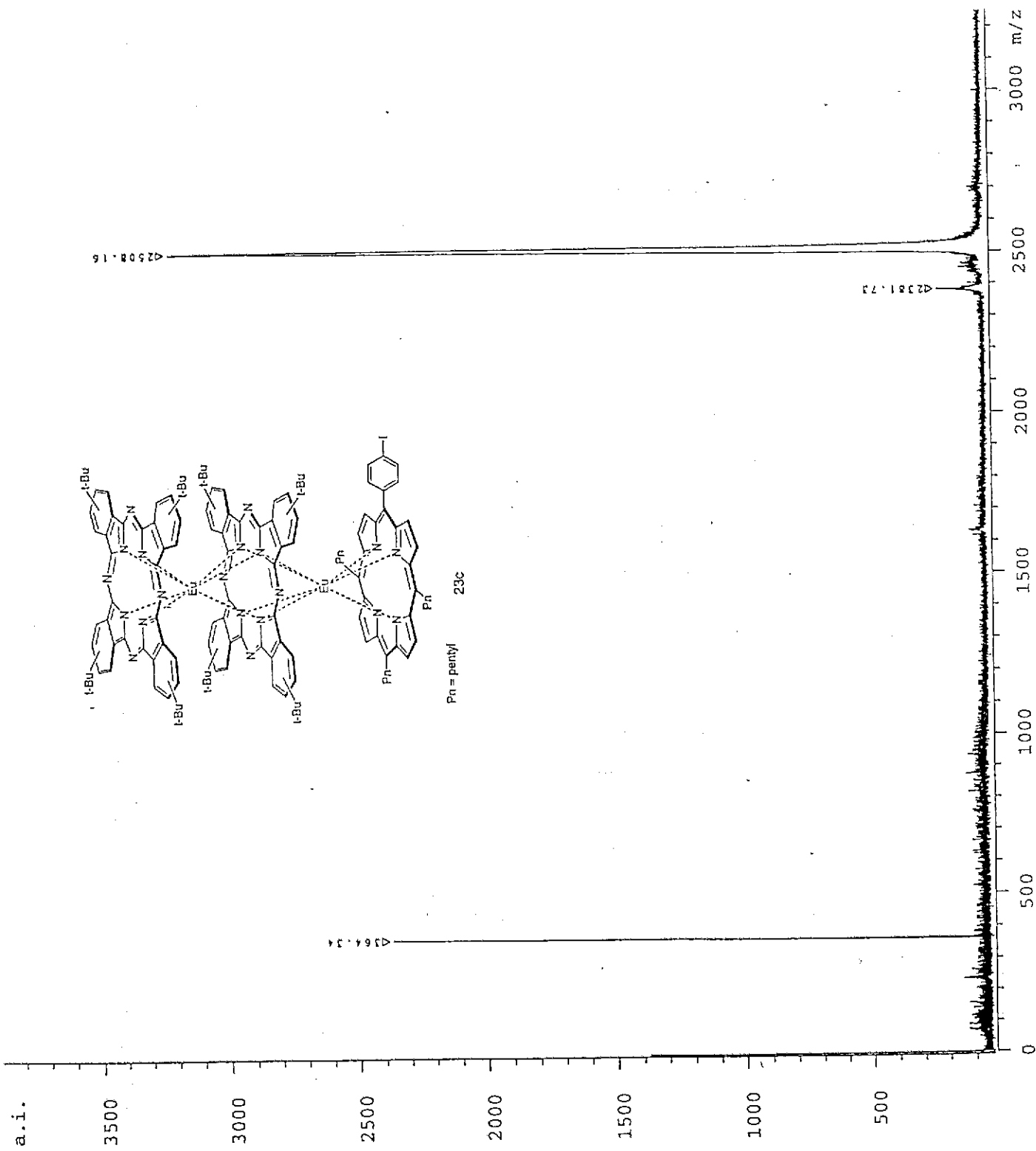
Signature: .....

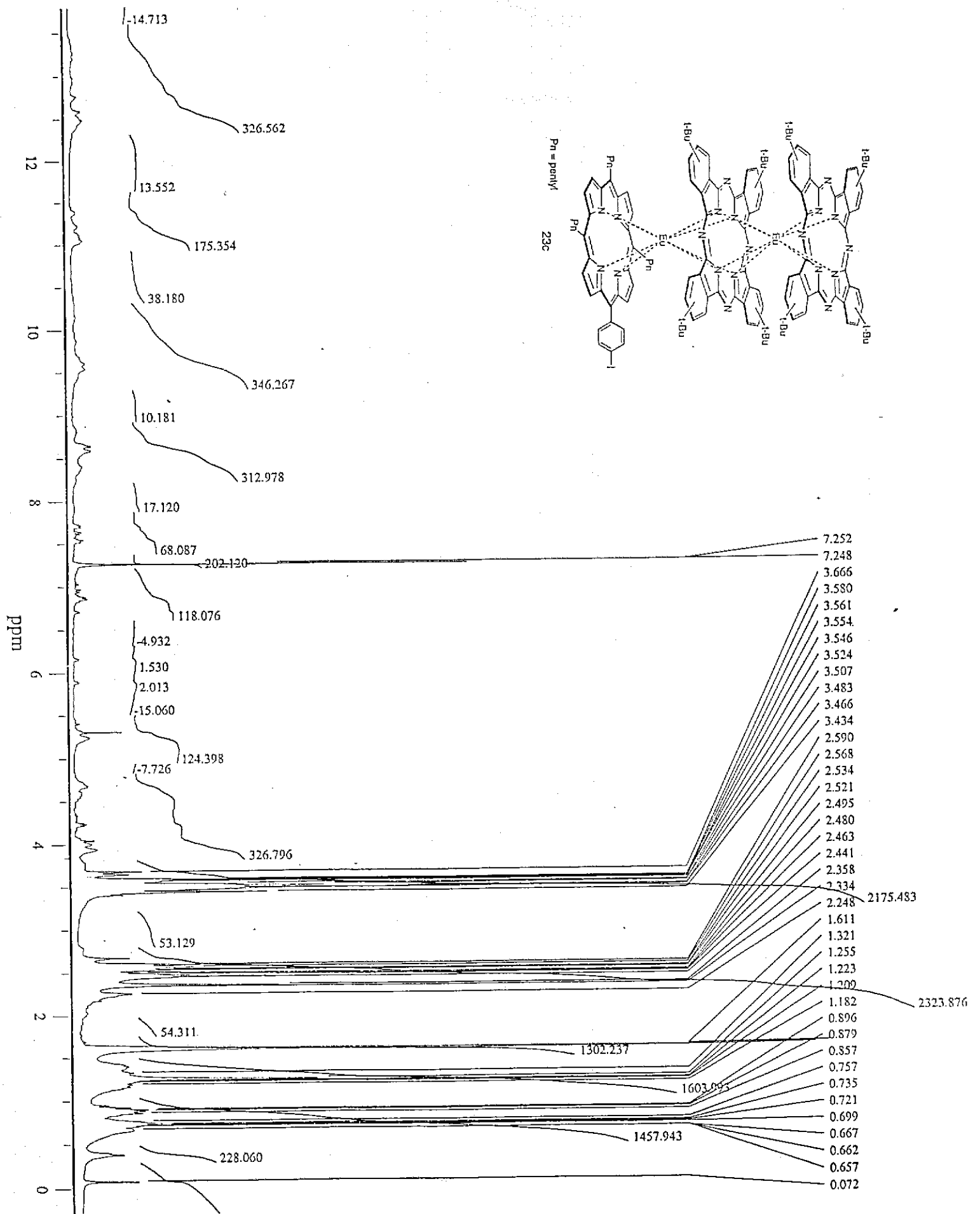
\*\*\* End Spectrum/Peak Report \*\*\*



Pn = pentyl

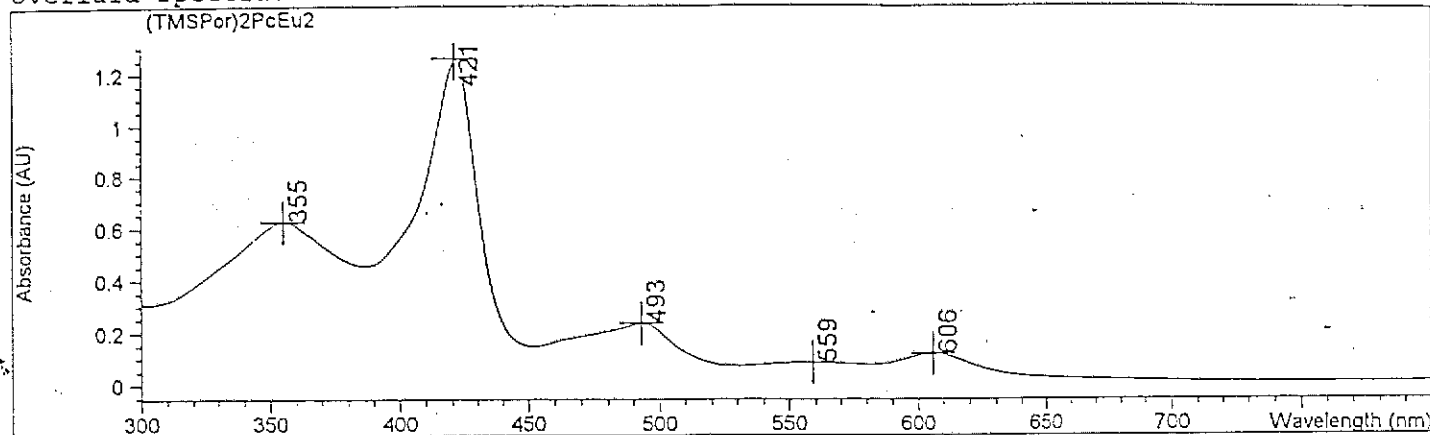
23c





Method file : <untitled>  
Information : Default Method  
Data File : <untitled>

## Overlaid Spectra:

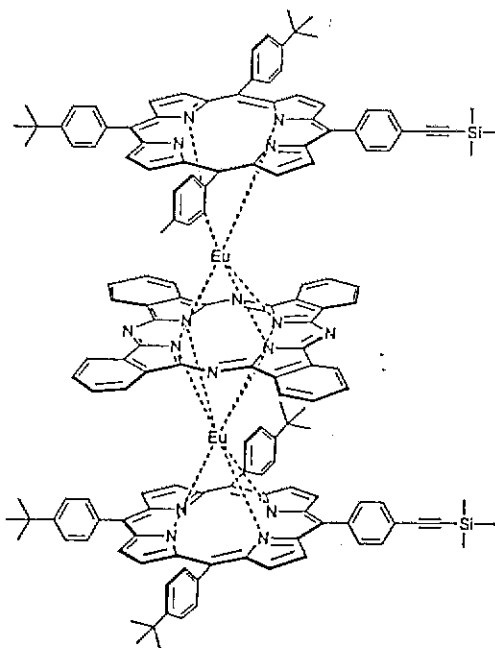


#	Name	Peaks (nm)	Abs (AU)
1	(TMSPor)2PcEu2	421.0	1.25890
1		355.0	0.62666
1		493.0	0.23762
1		606.0	0.12098
1		559.0	8.7262E-2
1		***	***

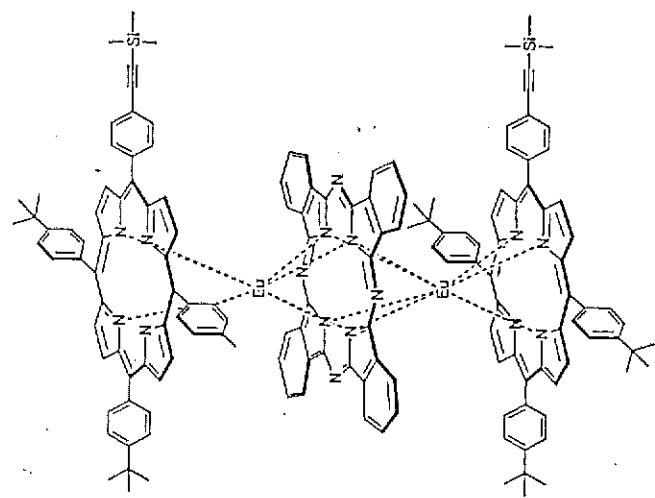
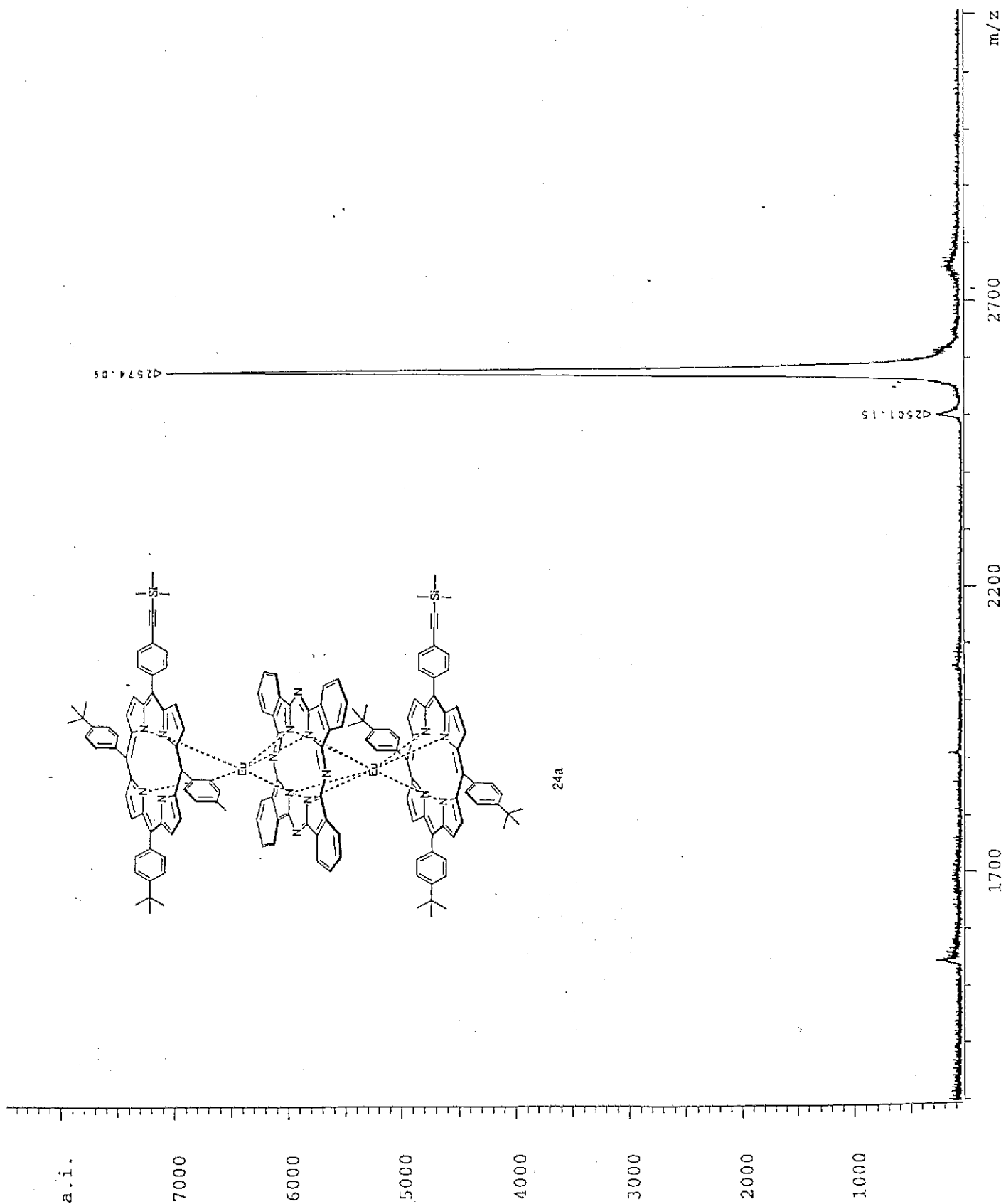
Report generated by :

Signature: .....

\*\*\* End Spectrum/Peak Report \*\*\*

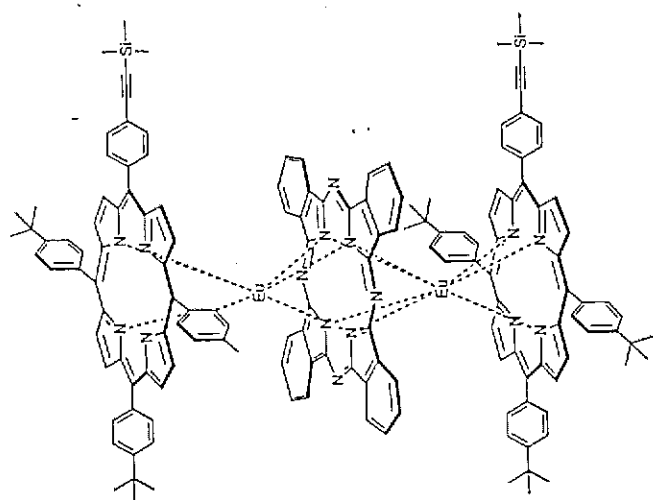






24a

/data/chemistry/LINDSEY/JUNZHONG/994264/1SRef/pdata/1 unknown Thu Oct 21 11:16:25 1999



24a

