

Fig. i XRD patterns of a) Cl-[Zn₂Al], VBS-[Zn₂Al] at b) room temperature and c) after 200°C and d) PSS-[Zn₂Al] LDH nanocomposites. The asterisk represents the PSD response. On the left, the portion at low angle is enlarged for clarity.

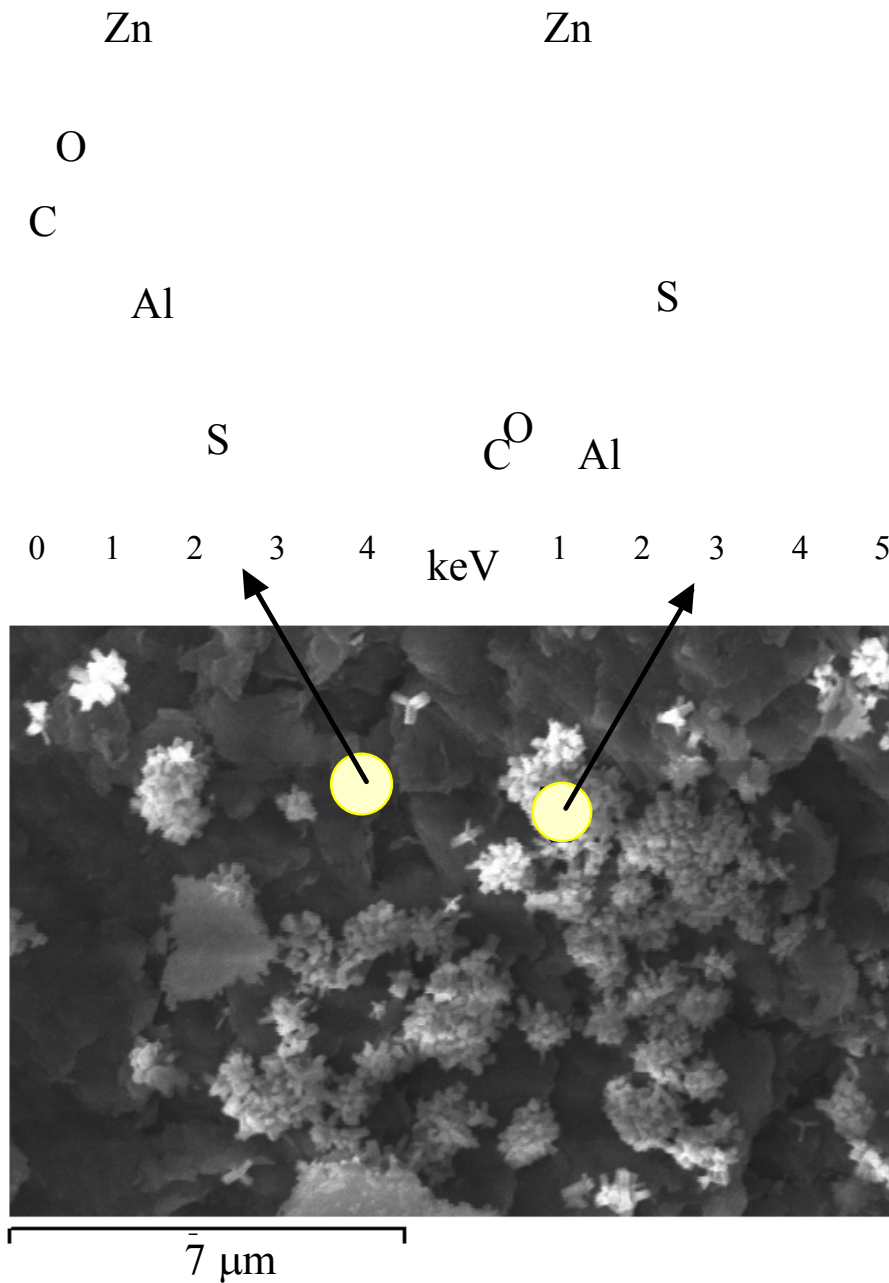


Fig. ii EDX analyses for VBS-[Zn₂Al] phase after treatment at 600°C under N₂ atmosphere.

The little crystallites shaped in star gathered together are mostly composed of the elements Zn and S, whereas the matrix (in dark) presents the elements Al, O and C in addition.