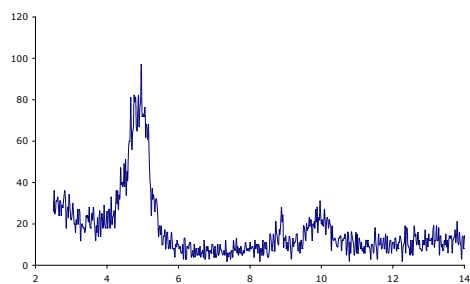
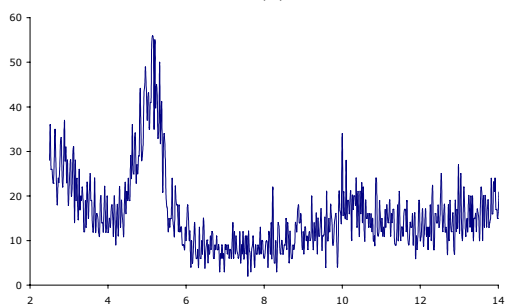


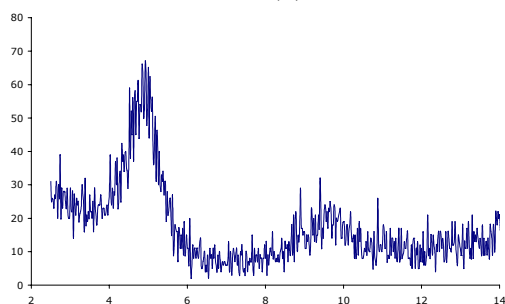
(a)



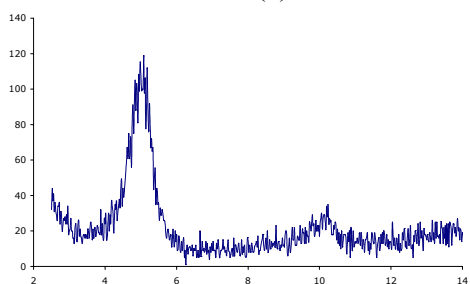
(b)



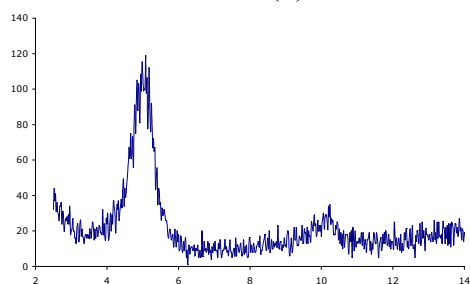
(c)



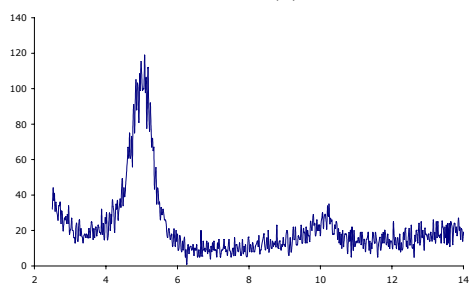
(d)



(e)

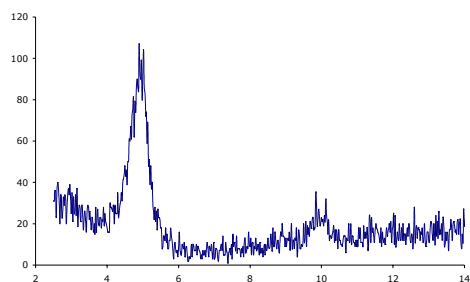


(f)

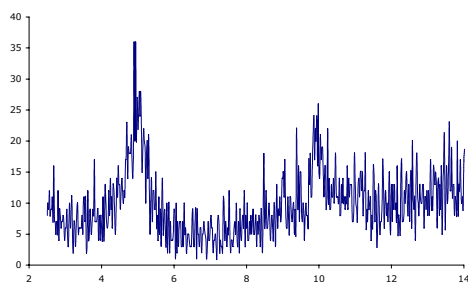


(g)

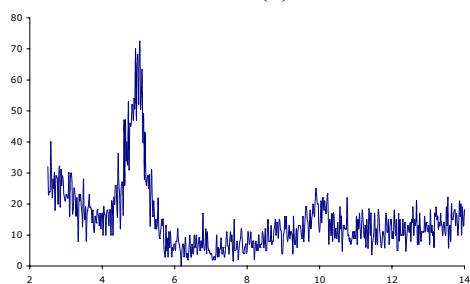
ESI 5. Powder X-ray diffraction patterns for poly(ethylene oxide) based Li-Mmt clay-polymer nanocomposites (a) PEG, (b) PEO-DiGly, (c) PEO-DiAc, (d) PEO-MAc, (e) PEO-DiMac, (f) PEO-MMac and (g) PEO-Meac



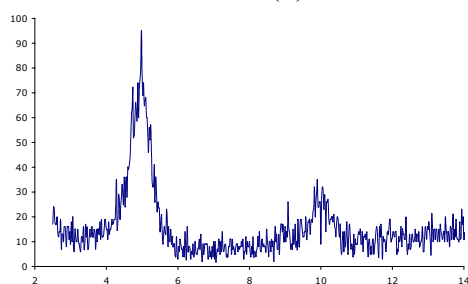
(a)



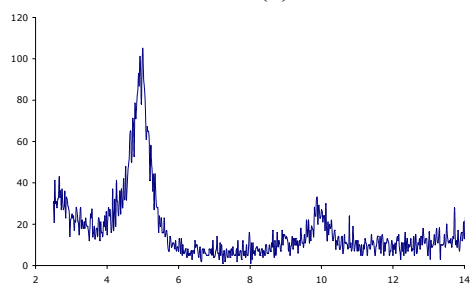
(b)



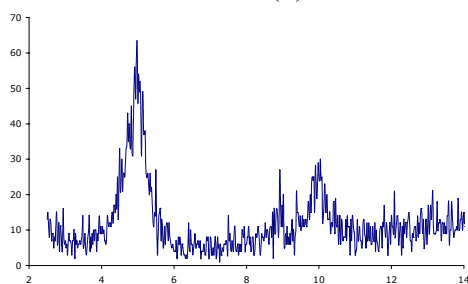
(c)



(d)

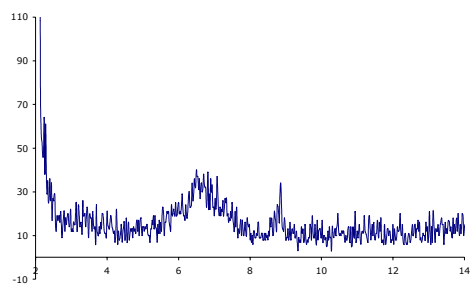


(e)

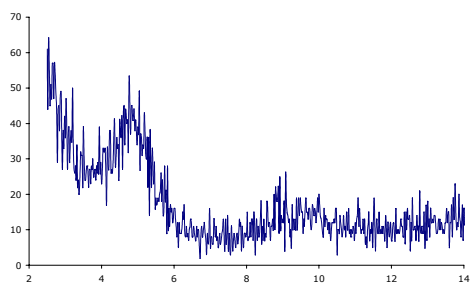


(f)

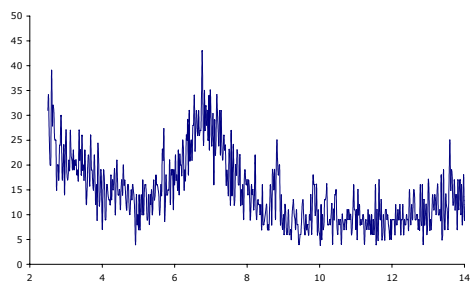
ESI 6. Powder X-ray diffraction patterns for poly(propylene oxide) based Li-Mmt clay-polymer nanocomposites (a) PPG, (b) PPO-DiGly, (c) PPO-DiAc, (d) PPO-MAc, (e) PPO-DiMac and (f) PPO-MMac



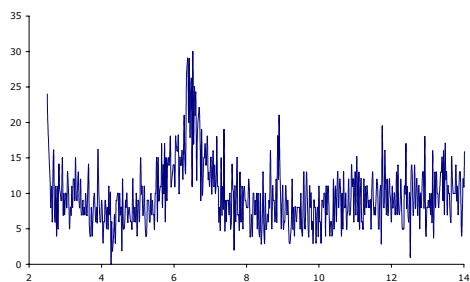
(a)



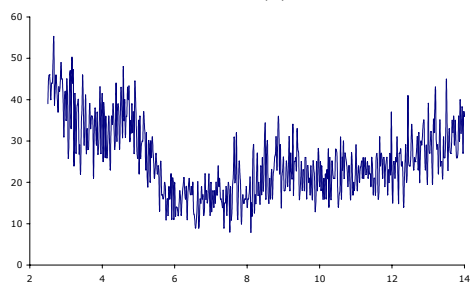
(b)



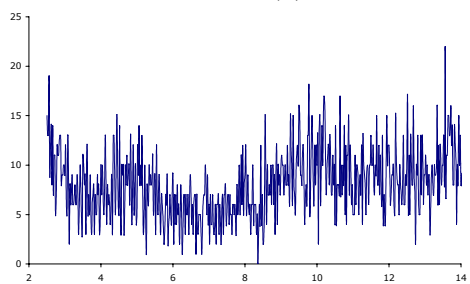
(c)



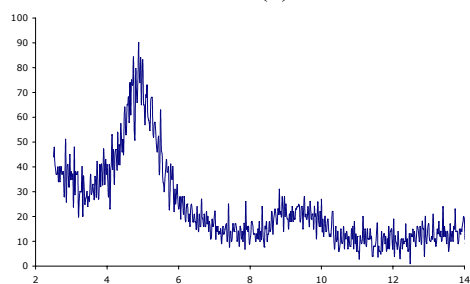
(d)



(e)

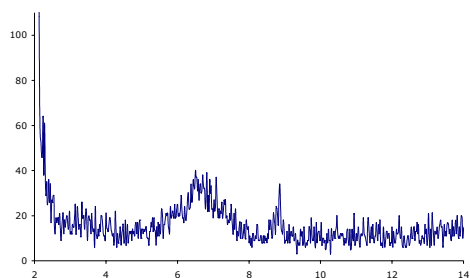


(f)

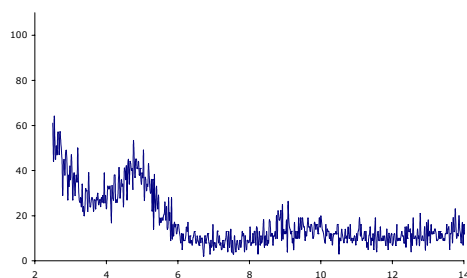


(g)

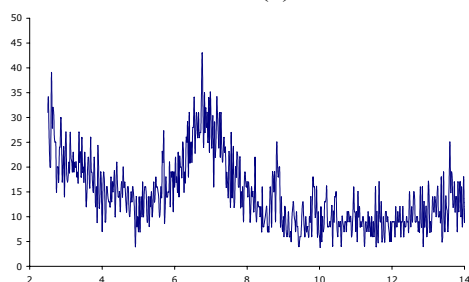
ESI 7. Powder X-ray diffraction patterns for poly(ethylene oxide) based K-Mmt clay-polymer nanocomposites (a) PEG, (b) PEO-DiGly, (c) PEO-DiAc, (d) PEO-MAc, (e) PEO-DiMac, (f) PEO-MMac and (g) PEO-Meac



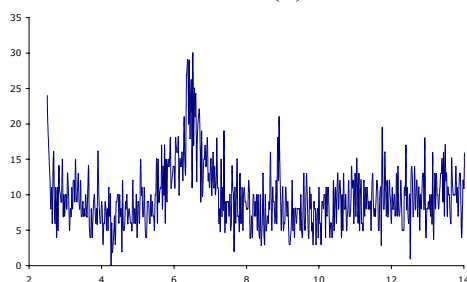
(a)



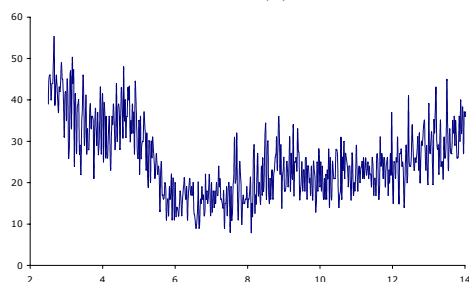
(b)



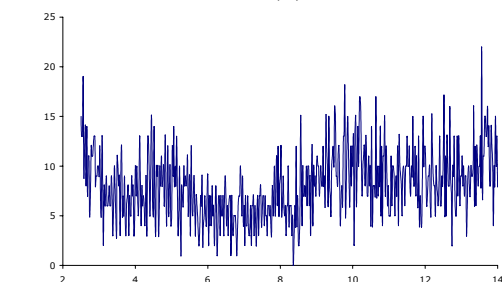
(c)



(d)



(e)



(f)

ESI 8. Powder X-ray diffraction patterns for poly(ethylene oxide) based K-Mmt clay-polymer nanocomposites (a) PPG, (b) PPO-DiGly, (c) PPO-DiAc, (d) PPO-MAc, (e) PPO-DiMac and (f) PPO-MMac